

District I
1625 N. French Dr., Hobbs, NM 88240
Phone: (575) 393-6161 Fax: (575) 393-9720
District II
811 S. First St., Artesia, NM 88210
Phone: (575) 748-1283 Fax: (575) 748-9720
District III
1000 Rio Brazos Road, Aztec, NM 87410
Phone: (505) 334-6178 Fax: (505) 334-6170
District IV
1220 S. St. Francis Dr., Santa Fe, NM 87505
Phone: (505) 476-3460 Fax: (505) 476-3462

State of New Mexico
Energy, Minerals & Natural Resources Department
OIL CONSERVATION DIVISION
1220 South St. Francis Dr.
Santa Fe, NM 87505

Form C-102
Revised August 1, 2011
Submit one copy to appropriate
District Office

☐ AMENDED REPORT

WELL LOCATION AND ACREAGE DEDICATION PLAT

| | | | | | |
|--------------------------------------------------------------|----------------------|----------------------------------------------------------------------------|----------------------|------------------------------------------------------------|--------------------------------------------------------------------------|
| ¹ API Number 30-025-42479 | | ² Pool Code 7320 | | ³ Pool Name Brinninstool; Bone Spring | |
| ⁴ Property Code 314247 | | ⁵ Property Name NORTH THISTLE 15-10 STATE COM | | | ⁶ Well Number 2H |
| ⁷ OGRID No. 6137 | | ⁸ Operator Name DEVON ENERGY PRODUCTION COMPANY, L.P. | | | ⁹ Elevation 3711.4 |
| ¹⁰ Surface Location | | | | | |
| UL or lot no. M | Section 15 | Township 23 S | Range 33 E | Lot Idn 415 | Feet from the SOUTH 810 WEST LEA |
| ¹¹ Bottom Hole Location If Different From Surface | | | | | |
| UL or lot no. D | Section 10 | Township 23 S | Range 33E | Lot Idn 330 | Feet from the NORTH 380 WEST LEA |
| ¹² Dedicated Acres 320.00 | | ¹³ Joint or Infill | | ¹⁴ Consolidation Code | |
| ¹⁵ Order No. | | | | | |

No allowable will be assigned to this completion until all interests have been consolidated or a non-standard unit has been approved by the division.

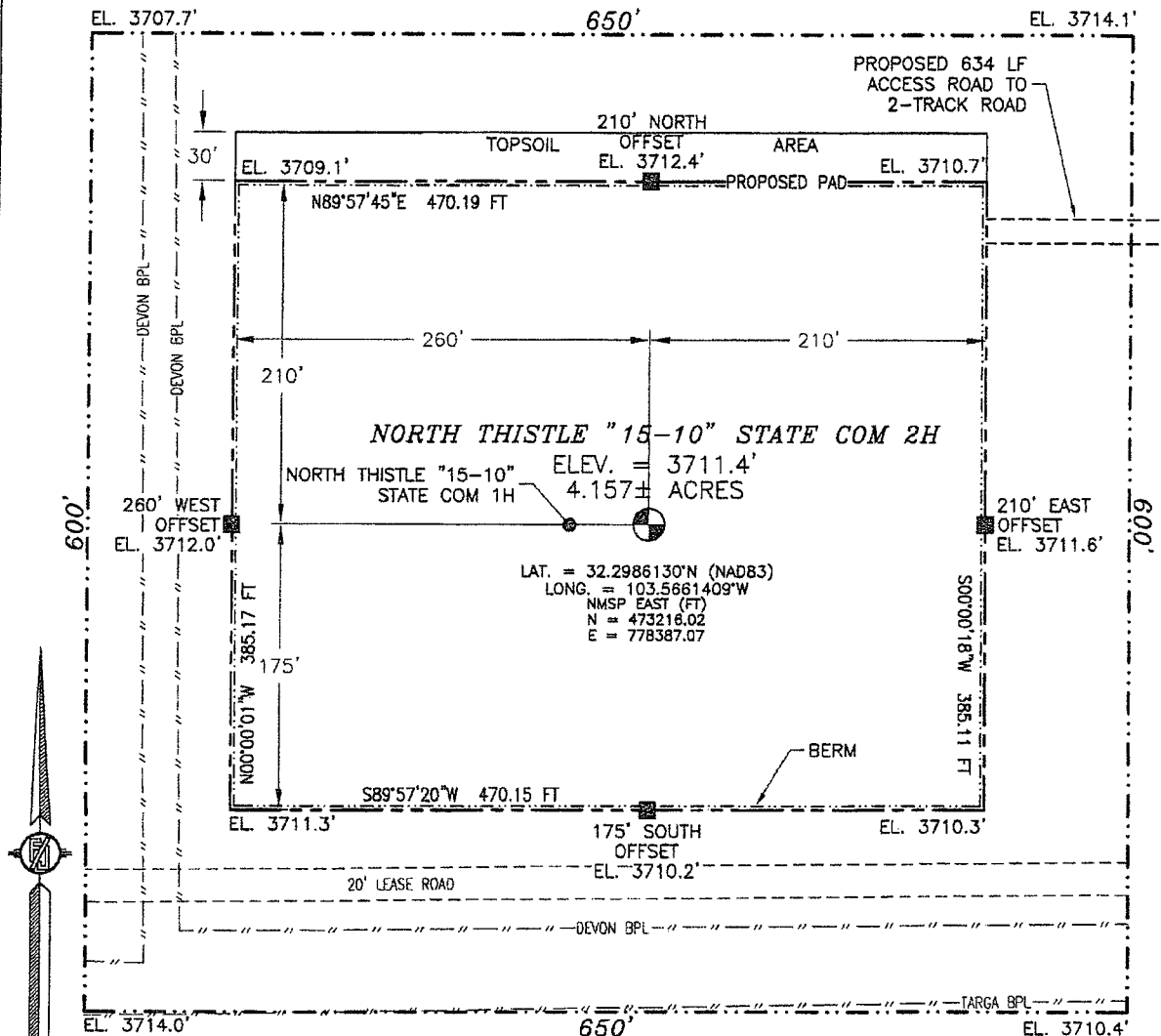
| | |
|--|----------------------------------------------------------------------------------------------------------------------------------------------------------------------------------------------------------------------------------------------------------------------------------------------------------------------------------------------------------------------------------------------------------------------------------------------------------------------------------------------------------------------------------------------------------------------------------------------------------------------------------------------------------------------------------------------------------------------------------------|
| | <p>¹⁷ OPERATOR CERTIFICATION</p> <p>I hereby certify that the information contained herein is true and complete to the best of my knowledge and belief, and that this organization either owns a working interest or mineral interest in the land including the proposed bottom hole location or has a right to drill this well at this location pursuant to a contract with an owner of such a mineral or working interest, or to a voluntary pooling agreement or a compulsory pooling order heretofore entered by the division.</p> <p><i>Linda Good</i> 5/26/2015 Signature Date</p> <p>Linda Good Printed Name</p> <p>linda.good@dvn.com E-mail Address</p> |
| | <p>¹⁸ SURVEYOR CERTIFICATION</p> <p>I hereby certify that the well location shown on this plat was plotted from field notes of actual surveys made by me or under my supervision, and that the same are true and correct to the best of my knowledge.</p> <p>MAY 21, 2015 Date of Survey</p> <p><i>[Signature]</i> Signature and Seal of Surveyor</p> <p>Certificate Number: FILMANN F. JARAMILLO, PLS 12797 SURVEY NO. 3669B</p> |

JUN 11 2015

SECTION 15, TOWNSHIP 23 SOUTH, RANGE 33 EAST, N.M.P.M.
LEA COUNTY, STATE OF NEW MEXICO

SITE MAP

NOTE: LATITUDE AND LONGITUDE COORDINATES ARE SHOWN USING THE NORTH AMERICAN DATUM OF 1983 (NAD83). LISTED NEW MEXICO STATE PLANE EAST COORDINATES ARE GRID (NAD83). BASIS OF BEARING AND DISTANCES USED ARE NEW MEXICO STATE PLANE EAST COORDINATES MODIFIED TO THE SURFACE



010 50 100 200

SCALE 1" = 100'

DIRECTIONS TO LOCATION

FROM THE INTERSECTION OF STATE HIGHWAY 128 AND CR 21 (DELAWARE BASIN ROAD) GO NORTH ON CR 21 APPROX. 6.1 MILES TO A LEASE ROAD ON LEFT (WEST), TURN WEST GO APPROX. 3.1 MILES TO A LEASE ROAD ON RIGHT (NORTH), TURN NORTH GO 0.1 MILE TO ROAD LATH ON LEFT (WEST) FOLLOW ROAD LATHS WEST APPROX. 834' TO THE NORTHEAST PAD CORNER FOR THIS LOCATION.

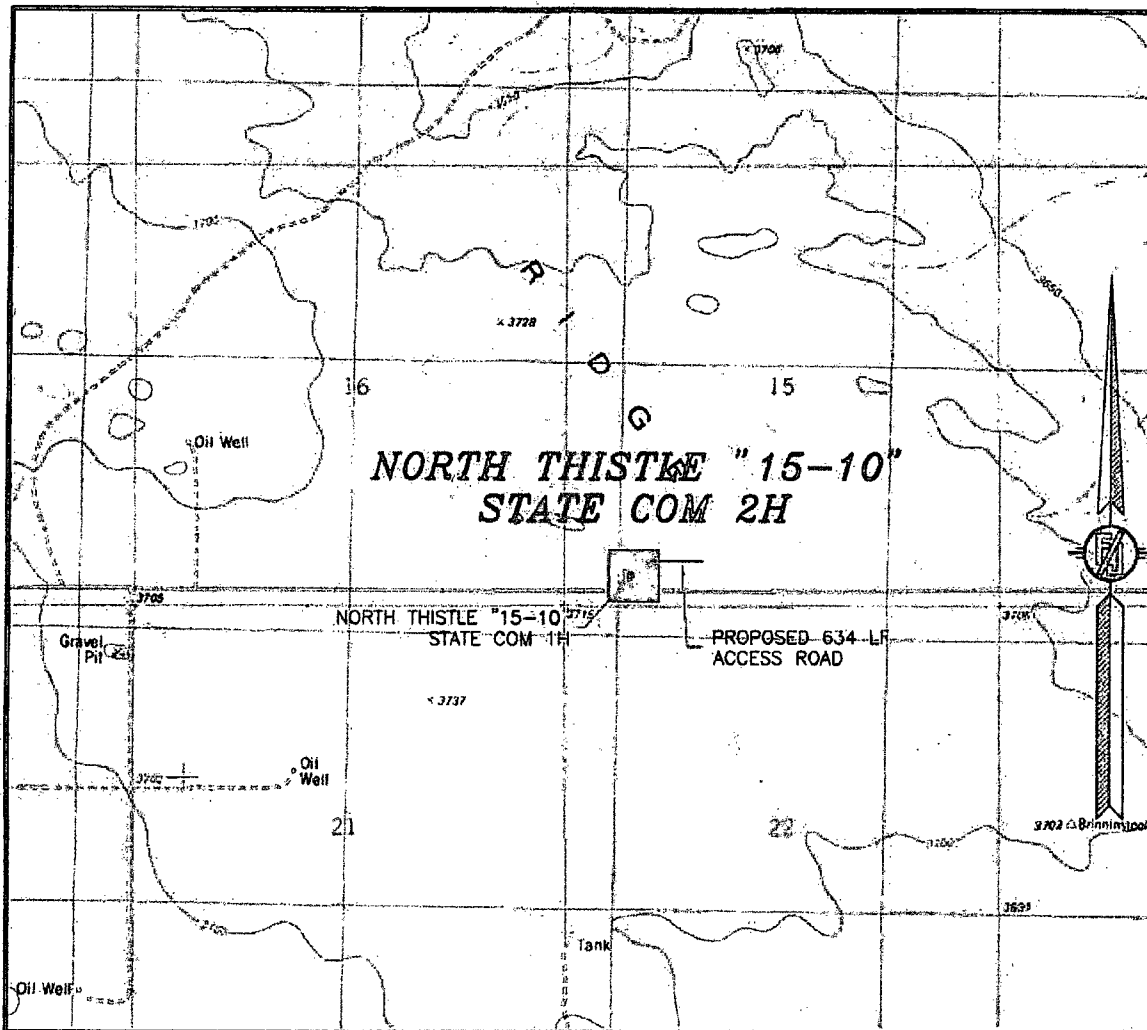
DEVON ENERGY PRODUCTION COMPANY, L.P.
NORTH THISTLE "15-10" STATE COM 2H
LOCATED 415 FT. FROM THE SOUTH LINE
AND 810 FT. FROM THE WEST LINE OF
SECTION 15, TOWNSHIP 23 SOUTH,
RANGE 33 EAST, N.M.P.M.
LEA COUNTY, STATE OF NEW MEXICO

MAY 21, 2015

SURVEY NO. 3669B

MADRON SURVEYING, INC. 301 SOUTH CANAL (575) 234-3341 CARLSBAD, NEW MEXICO

SECTION 15, TOWNSHIP 23 SOUTH, RANGE 33 EAST, N.M.P.M.
LEA COUNTY, STATE OF NEW MEXICO
LOCATION VERIFICATION MAP



USGS QUAD MAP:
TIP TOP WELLS

NOT TO SCALE

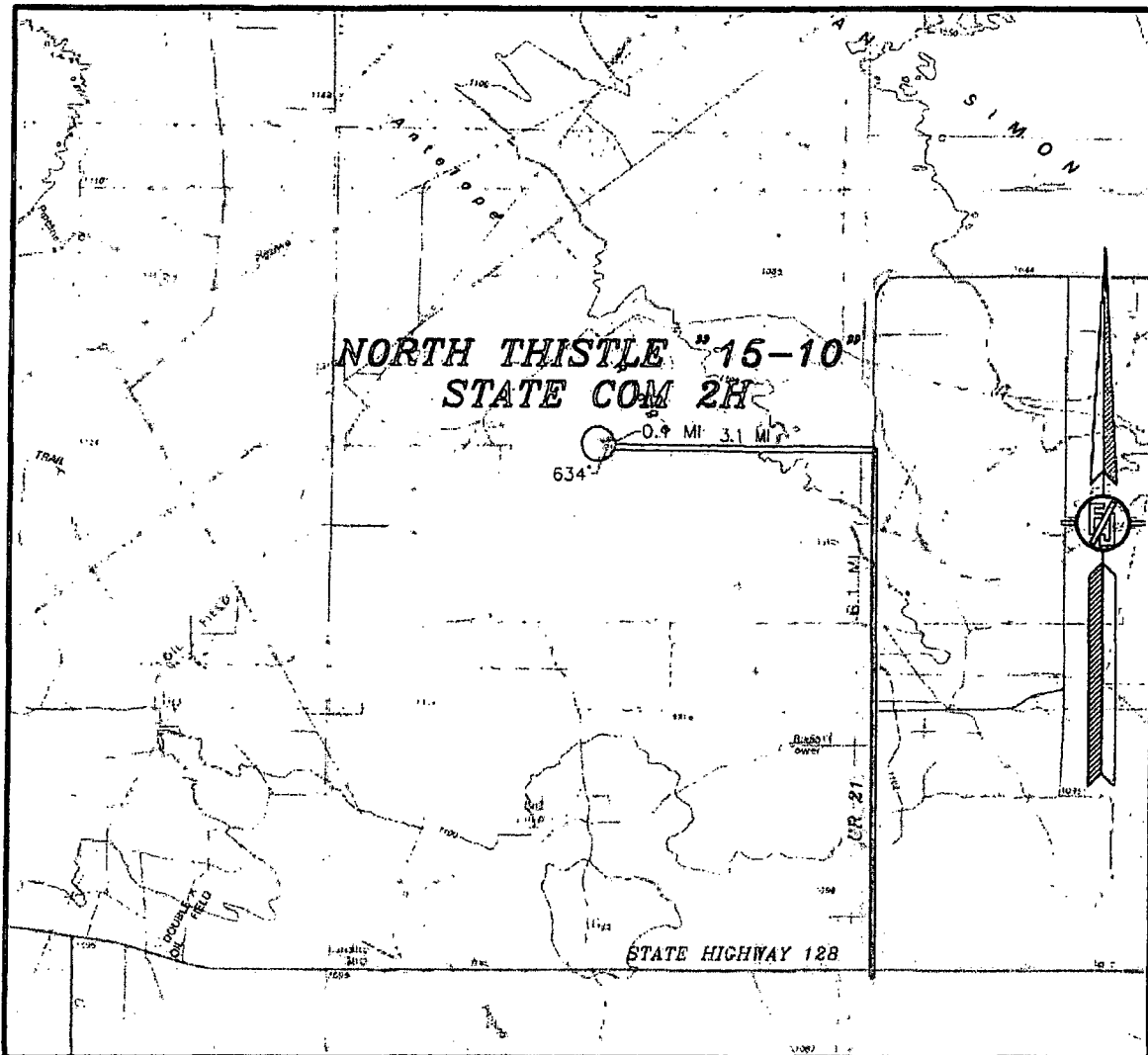
DEVON ENERGY PRODUCTION COMPANY, L.P.
NORTH THISTLE "15-10" STATE COM 2H
LOCATED 415 FT. FROM THE SOUTH LINE
AND 810 FT. FROM THE WEST LINE OF
SECTION 15, TOWNSHIP 23 SOUTH,
RANGE 33 EAST, N.M.P.M.
LEA COUNTY, STATE OF NEW MEXICO

MAY 21, 2015

SURVEY NO. 3669B

MADRON SURVEYING, INC. 301 SOUTH CANAL (575) 234-3341 CARLSBAD, NEW MEXICO

SECTION 15, TOWNSHIP 23 SOUTH, RANGE 33 EAST, N.M.P.M.
LEA COUNTY, STATE OF NEW MEXICO
VICINITY MAP



DISTANCES IN MILES

NOT TO SCALE

DEVON ENERGY PRODUCTION COMPANY, L.P.
NORTH THISTLE "15-10" STATE COM 2H
LOCATED 415 FT. FROM THE SOUTH LINE
AND 810 FT. FROM THE WEST LINE OF
SECTION 15, TOWNSHIP 23 SOUTH,
RANGE 33 EAST, N.M.P.M.
LEA COUNTY, STATE OF NEW MEXICO

DIRECTIONS TO LOCATION

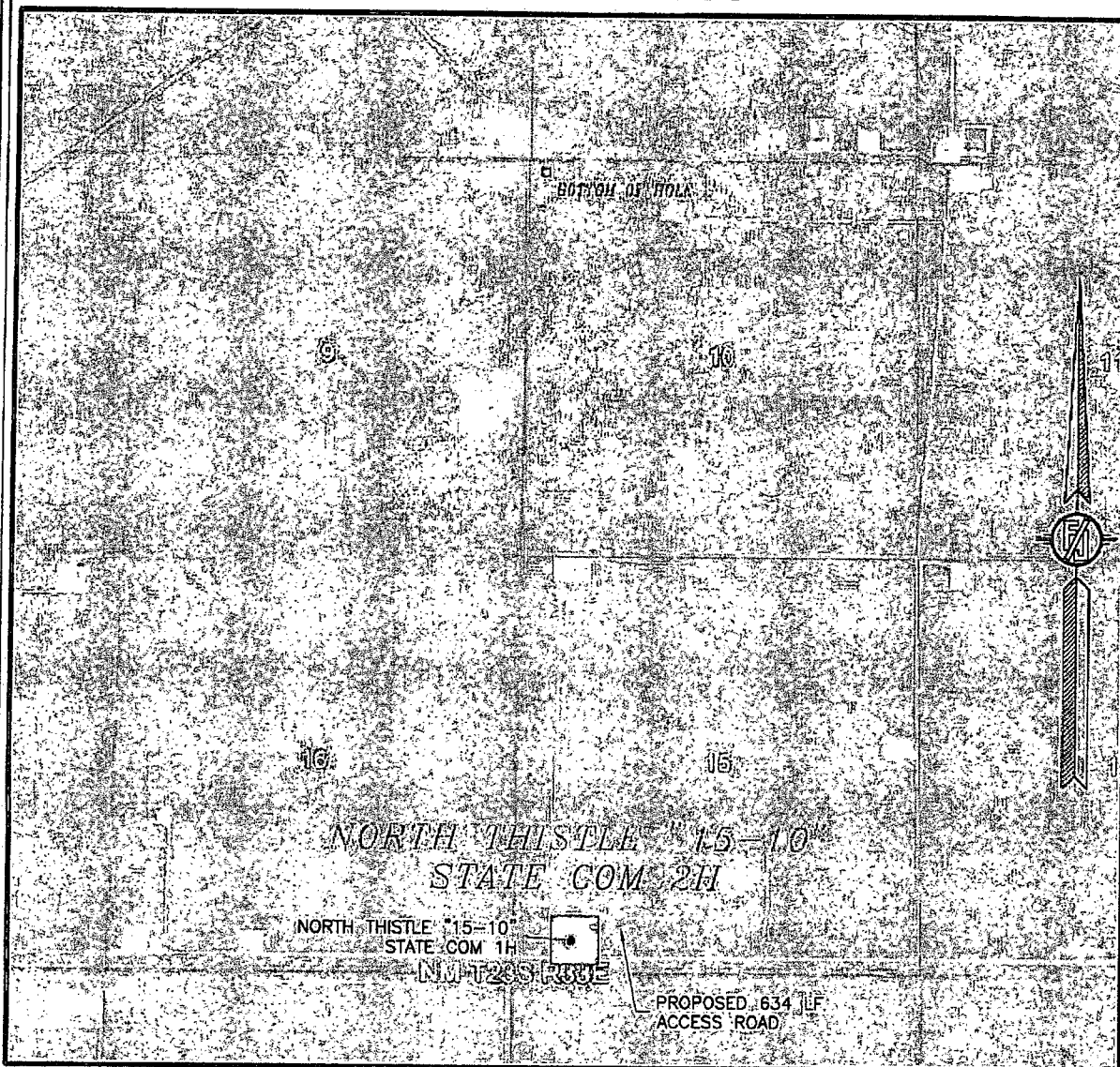
FROM THE INTERSECTION OF STATE HIGHWAY 128 AND CR 21
(DELAWARE BASIN ROAD) GO NORTH ON CR 21 APPROX. 6.1 MILES
TO A LEASE ROAD ON LEFT (WEST), TURN WEST GO APPROX. 3.1
MILES TO A LEASE ROAD ON RIGHT (NORTH), TURN NORTH GO 0.1
MILE TO ROAD LATH ON LEFT (WEST) FOLLOW ROAD LATHS WEST
APPROX. 634' TO THE NORTHEAST PAD CORNER FOR THIS LOCATION.

MAY 21, 2015

SURVEY NO. 3669B

MADRON SURVEYING, INC. 301 SOUTH CANAL (575) 234-3341 CARLSBAD, NEW MEXICO

SECTION 15, TOWNSHIP 23 SOUTH, RANGE 33 EAST, N.M.P.M.
LEA COUNTY, STATE OF NEW MEXICO
AERIAL PHOTO



NOT TO SCALE
AERIAL PHOTO:
GOOGLE EARTH
FEBRUARY 2014

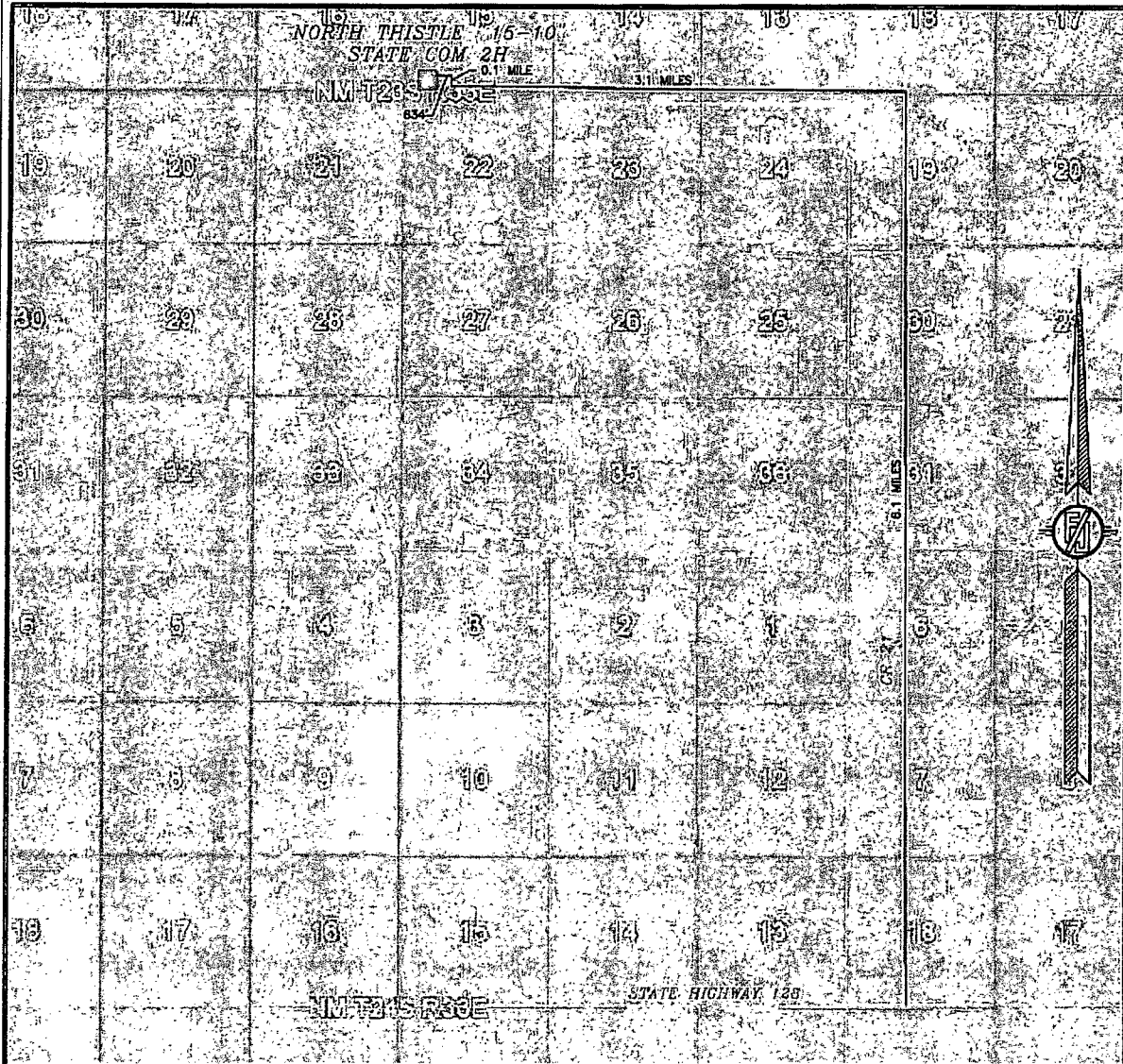
DEVON ENERGY PRODUCTION COMPANY, L.P.
NORTH THISTLE "15-10" STATE COM 2H
LOCATED 415 FT. FROM THE SOUTH LINE
AND 810 FT. FROM THE WEST LINE OF
SECTION 15, TOWNSHIP 23 SOUTH,
RANGE 33 EAST, N.M.P.M.
LEA COUNTY, STATE OF NEW MEXICO

MAY 21, 2015

SURVEY NO. 3669B

MADRON SURVEYING, INC. 301 SOUTH CANAL (575) 234-3341 CARLSBAD, NEW MEXICO

SECTION 15, TOWNSHIP 23 SOUTH, RANGE 33 EAST, N.M.P.M.
LEA COUNTY, STATE OF NEW MEXICO
ACCESS AERIAL ROUTE MAP



NOT TO SCALE
AERIAL PHOTO:
GOOGLE EARTH
FEBRUARY 2014

DEVON ENERGY PRODUCTION COMPANY, L.P.
NORTH THISTLE "15-10" STATE COM 2H
LOCATED 415 FT. FROM THE SOUTH LINE
AND 810 FT. FROM THE WEST LINE OF
SECTION 15, TOWNSHIP 23 SOUTH,
RANGE 33 EAST, N.M.P.M.
LEA COUNTY, STATE OF NEW MEXICO

MAY 21, 2015

SURVEY NO. 3669B

MADRON SURVEYING, INC. 301 SOUTH CANAL (575) 234-3341 CARLSBAD, NEW MEXICO