

District I
1625 N. French Dr., Hobbs, NM 88240
Phone: (575) 393-6161 Fax: (575) 393-0720
District II
311 S. First St., Artesia, NM 88210
Phone: (575) 748-1283 Fax: (575) 748-9720
District III
1000 Rio Brazos Road, Aztec, NM 87410
Phone: (505) 334-6173 Fax: (505) 334-6170
District IV
1220 S. St. Francis Dr., Santa Fe, NM 87505
Phone: (505) 476-3460 Fax: (505) 476-3462

State of New Mexico
Energy, Minerals & Natural Resources Department
OIL CONSERVATION DIVISION
1220 South St. Francis Dr.
Santa Fe, NM 87505

Form C-102
Revised August 1, 2011
Submit one copy to appropriate
District Office
☐ AMENDED REPORT

HOBBS OCD
JUN 15 2015

RECEIVED

WELL LOCATION AND ACREAGE DEDICATION PLAT

¹ API Number 30-025-42674	² Pool Code 96715	³ Pool Name WC-025 G-08 5253209L; BONE LARIX
⁴ Property Code 714977	⁵ Property Name PADUCA BREAKS 9 FEDERAL	
⁷ OGRID No. 6137	⁸ Operator Name DEVON ENERGY PRODUCTION COMPANY, L.P.	
		⁶ Well Number 2H
		⁹ Elevation 3466.1

¹⁰ Surface Location

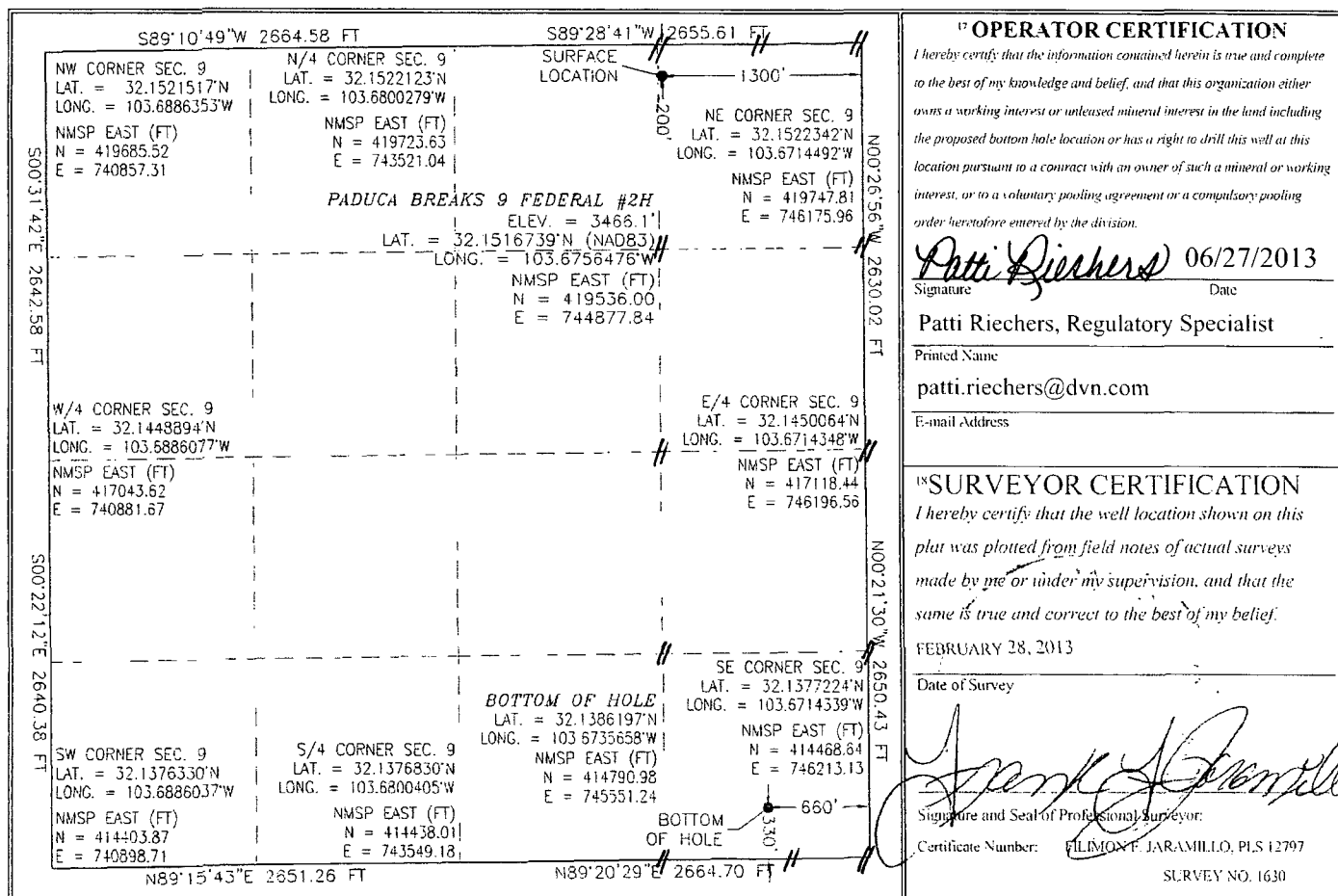
UL or lot no.	Section	Township	Range	Lot Idn	Feet from the	North/South line	Feet from the	East/West line	County
A	9	25 S	32 E		200	NORTH	1300	EAST	LEA

¹¹ Bottom Hole Location If Different From Surface

UL or lot no.	Section	Township	Range	Lot Idn	Feet from the	North/South line	Feet from the	East/West line	County
P	9	25 S	32 E		330	SOUTH	660	EAST	LEA

¹² Dedicated Acres 160	¹³ Joint or Infill	¹⁴ Consolidation Code	¹⁵ Order No.
---	-------------------------------	----------------------------------	-------------------------

No allowable will be assigned to this completion until all interests have been consolidated or a non-standard unit has been approved by the division. PP: 200' FNL & 1300' FEL, Sec 9, T25S-R32E



¹⁷ OPERATOR CERTIFICATION
I hereby certify that the information contained herein is true and complete to the best of my knowledge and belief, and that this organization either owns a working interest or unleased mineral interest in the land including the proposed bottom hole location or has a right to drill this well at this location pursuant to a contract with an owner of such a mineral or working interest, or to a voluntary pooling agreement or a compulsory pooling order heretofore entered by the division.

Patti Riechers 06/27/2013
Signature Date

Patti Riechers, Regulatory Specialist
Printed Name

patti.riechers@dvn.com
E-mail Address

¹⁸ SURVEYOR CERTIFICATION
I hereby certify that the well location shown on this plat was plotted from field notes of actual surveys made by me or under my supervision, and that the same is true and correct to the best of my belief.

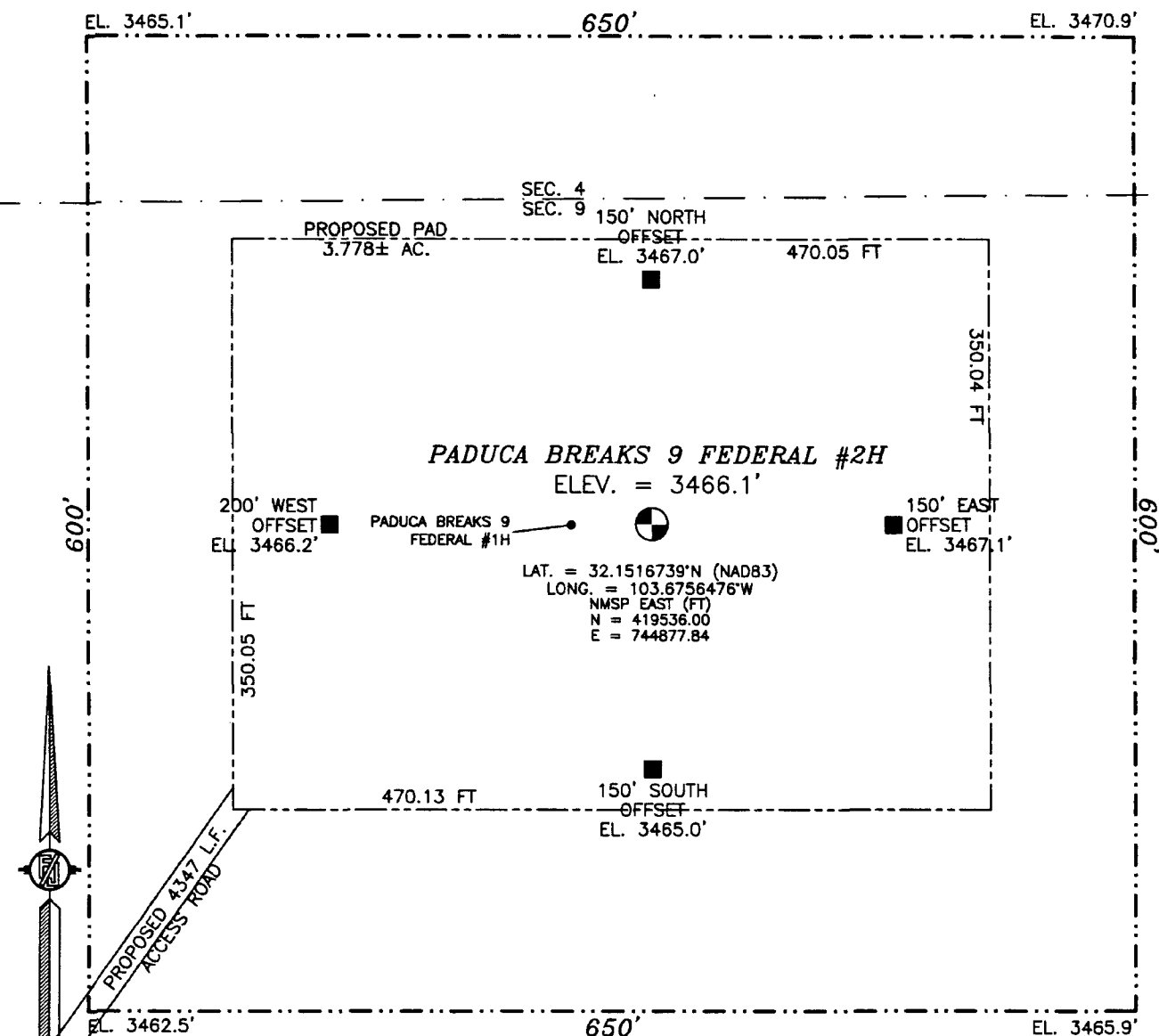
FEBRUARY 28, 2013
Date of Survey

Filimon F. Jaramillo
Signature and Seal of Professional Surveyor

Certificate Number: FILIMON F. JARAMILLO, PLS 12797
SURVEY NO. 1630

JUN 16 2015

SECTION 9, TOWNSHIP 25 SOUTH, RANGE 32E EAST, N.M.P.M.
LEA COUNTY, STATE OF NEW MEXICO



010 50 100 200

SCALE 1" = 100'
DIRECTIONS TO LOCATION

FROM THE INTERSECTION OF SR 128 (JAL HWY) AND CR 1 (ORLA ROAD) GO SOUTH ON CR 1 5.34 MILES TURN RIGHT ON CALICHE LEASE ROAD GO WEST 0.15 MILES TO ROAD INTERSECTION GO WEST 0.25 MILES TO ROAD INTERSECTION GO NORTH (RIGHT) 0.11 MILES TO ROAD ANGLE LEFT THIS IS AN OLD WELL PAD AT NORTH CORNER OF INTERSECTION BEGIN ROAD UPGRADE OVER DIRT PILE GO NORTH 3845 L.F. ALONG ROAD UPGRADE TO THE NORTH END OF AN ABANDONED WELL PAD FOLLOW FLAGS NE. 503 L.F. TO SOUTHWEST CORNER OF PROPOSED PAD

DEVON ENERGY PRODUCTION COMPANY, L.P.
PADUCA BREAKS 9 FEDERAL #2H
LOCATED 200 FT. FROM THE NORTH LINE
AND 1300 FT. FROM THE EAST LINE OF
SECTION 9, TOWNSHIP 25 SOUTH,
RANGE 32E EAST, N.M.P.M.
LEA COUNTY, STATE OF NEW MEXICO

FEBRUARY 28, 2013

SURVEY NO. 1630

MADRON SURVEYING, INC. 301 SOUTH CANAL (575) 234-3341 CARLSBAD, NEW MEXICO

LOCATION VERIFICATION MAP



NOT TO SCALE

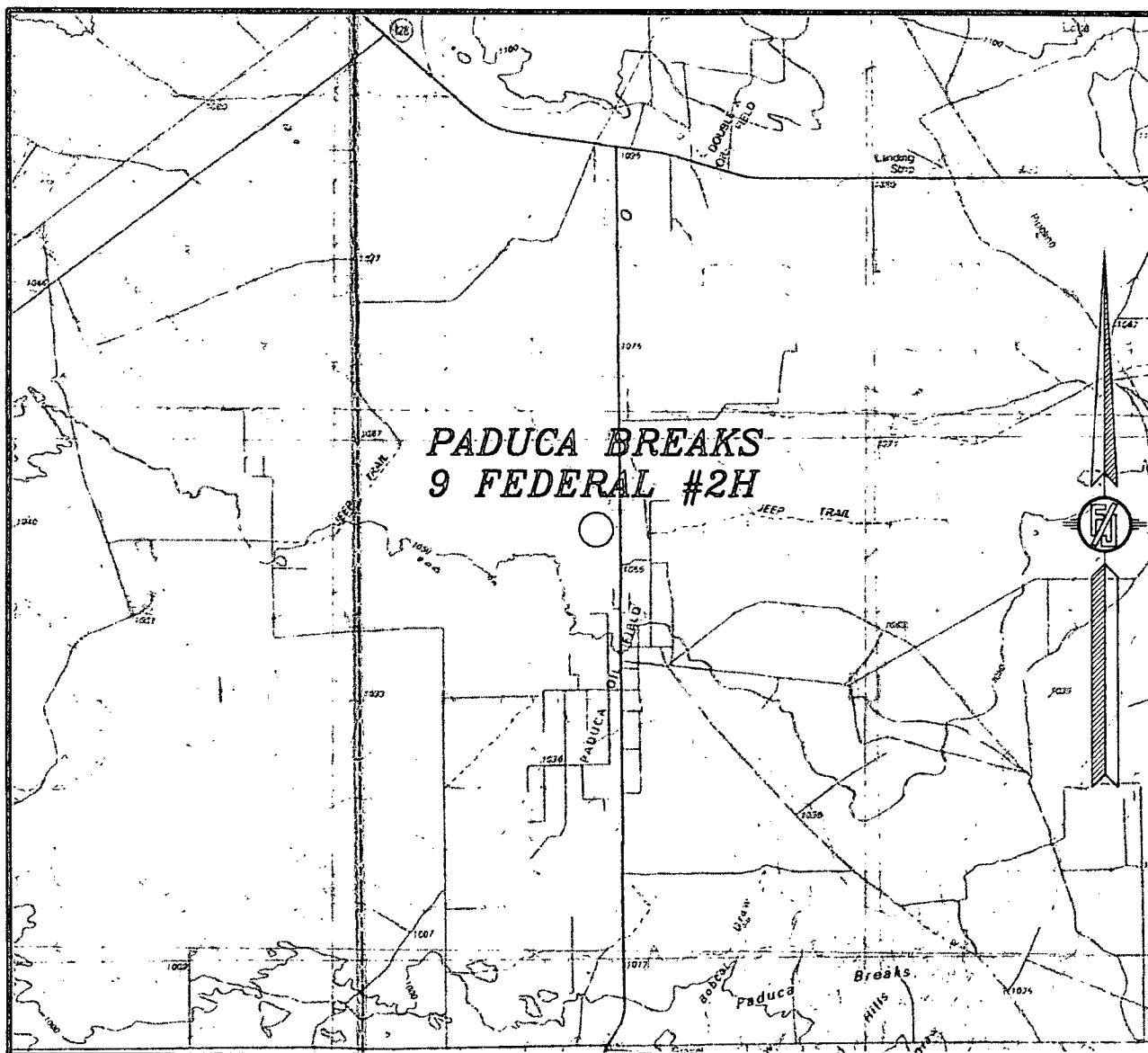
LOCATED 200 FT. FROM THE NORTH LINE
AND 1300 FT. FROM THE EAST LINE OF
SECTION 9, TOWNSHIP 25 SOUTH,
RANGE 32E EAST, N.M.P.M.
LEA COUNTY, STATE OF NEW MEXICO

FEBRUARY 28, 2013

MADRON SURVEYING, INC. 301 SOUTH CANAL CARLSBAD, NEW MEXICO
(575) 234-3341

SURVEY NO. 1630

SECTION 9, TOWNSHIP 25 SOUTH, RANGE 32E EAST, N.M.P.M.
LEA COUNTY, STATE OF NEW MEXICO
VICINITY MAP



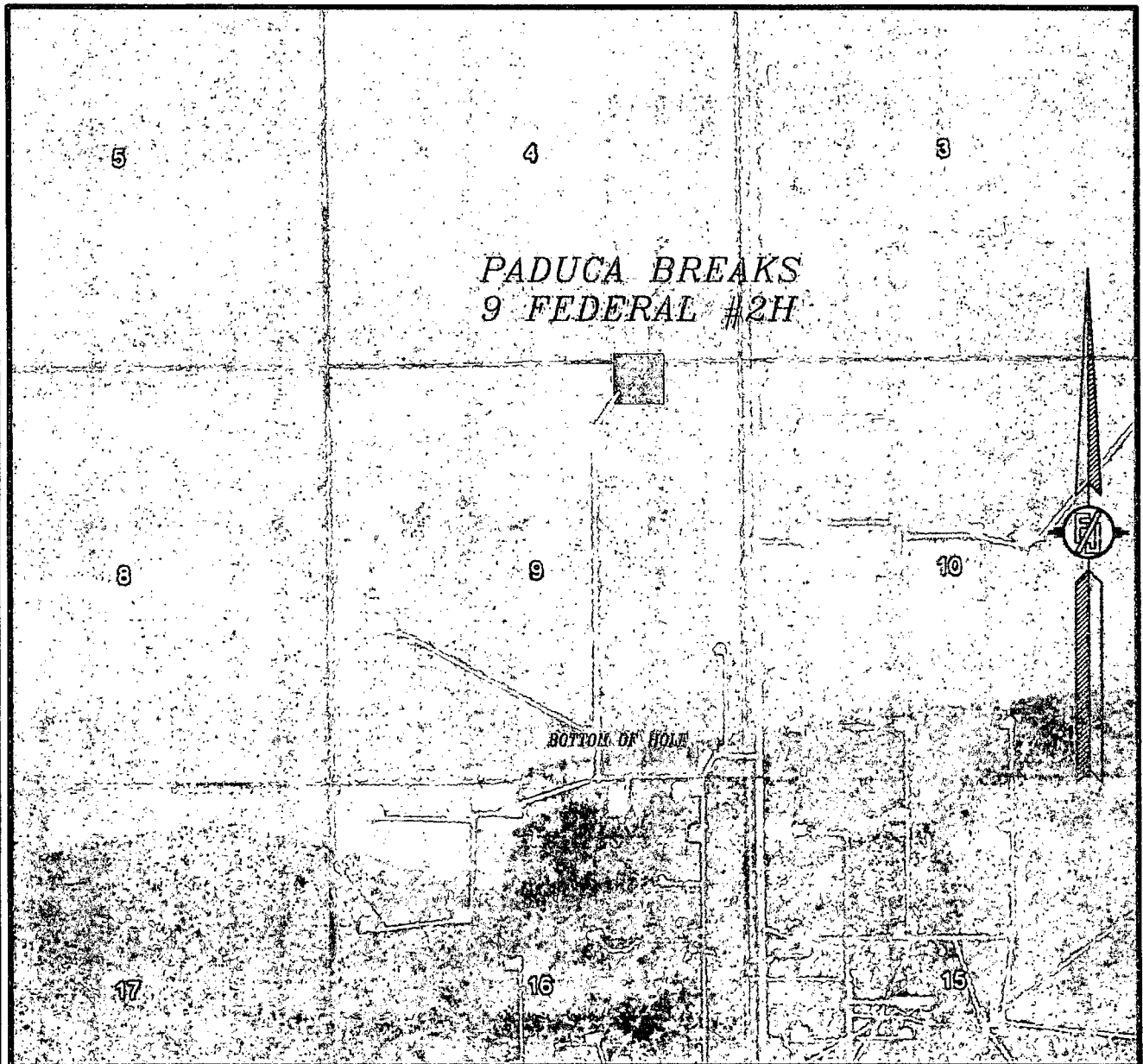
NOT TO SCALE

DEVON ENERGY PRODUCTION COMPANY, L.P.
PADUCA BREAKS 9 FEDERAL #2H
LOCATED 200 FT. FROM THE NORTH LINE
AND 1300 FT. FROM THE EAST LINE OF
SECTION 9, TOWNSHIP 25 SOUTH,
RANGE 32E EAST, N.M.P.M.
LEA COUNTY, STATE OF NEW MEXICO

FEBRUARY 28, 2013

MADRON SURVEYING, INC. 301 SOUTH CANAL (575) 234-3341 CARLSBAD, NEW MEXICO SURVEY NO. 1630

SECTION 9, TOWNSHIP 25 SOUTH, RANGE 32E EAST, N.M.P.M.
LEA COUNTY, STATE OF NEW MEXICO
AERIAL PHOTO



NOT TO SCALE
AERIAL PHOTO:
GOOGLE EARTH
MARCH 2012

DEVON ENERGY PRODUCTION COMPANY, L.P.
PADUCA BREAKS 9 FEDERAL #2H
LOCATED 200 FT. FROM THE NORTH LINE
AND 1300 FT. FROM THE EAST LINE OF
SECTION 9, TOWNSHIP 25 SOUTH,
RANGE 32E EAST, N.M.P.M.
LEA COUNTY, STATE OF NEW MEXICO

FEBRUARY 28, 2013

SURVEY NO. 1630

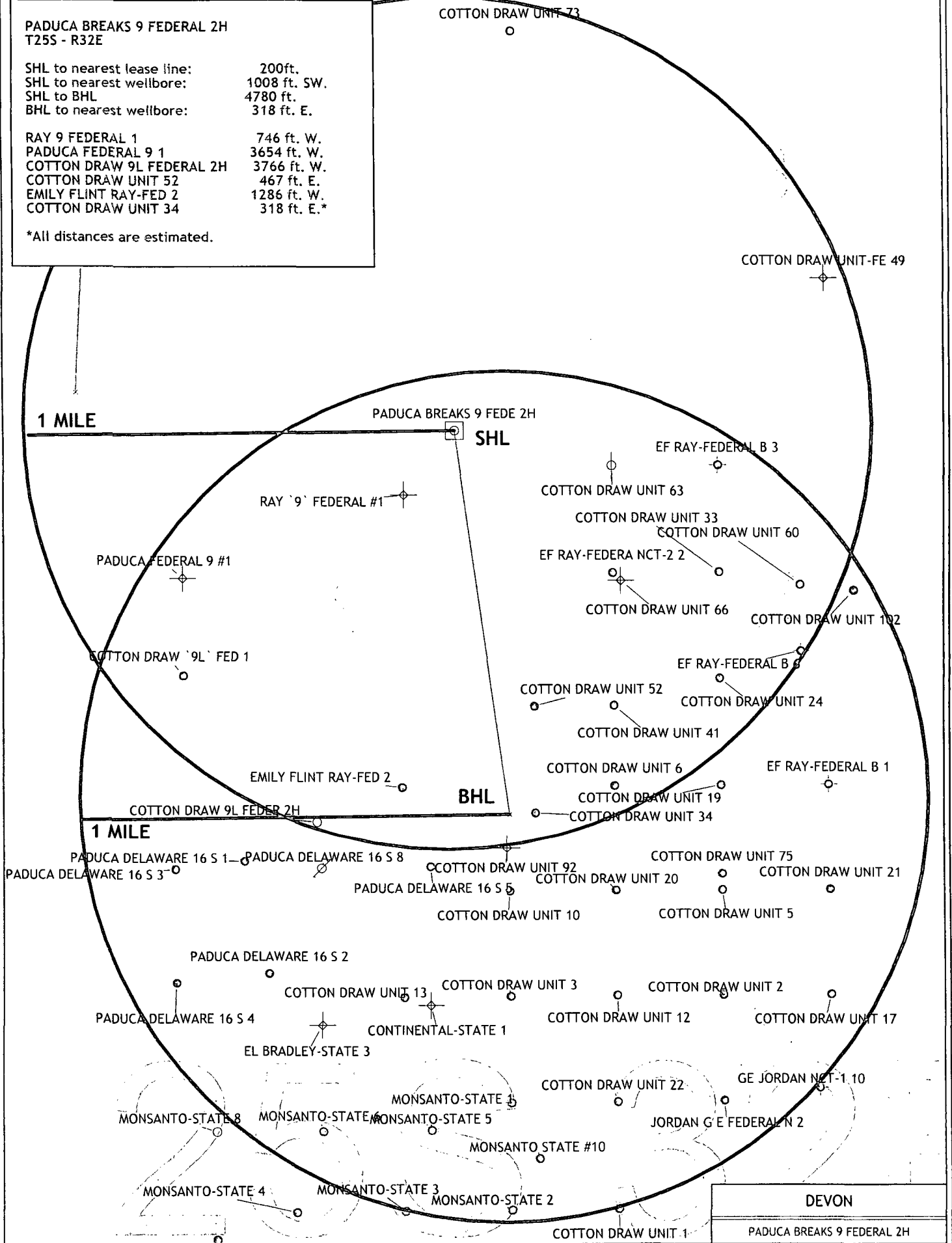
MADRON SURVEYING, INC. 501 SOUTH CANAL CARLSBAD, NEW MEXICO
(575) 234-3341

**PADUCA BREAKS 9 FEDERAL 2H
T25S - R32E**

SHL to nearest lease line: 200ft.
SHL to nearest wellbore: 1008 ft. SW.
SHL to BHL 4780 ft.
BHL to nearest wellbore: 318 ft. E.

RAY 9 FEDERAL 1 746 ft. W.
PADUCA FEDERAL 9 1 3654 ft. W.
COTTON DRAW 9L FEDERAL 2H 3766 ft. W.
COTTON DRAW UNIT 52 467 ft. E.
EMILY FLINT RAY-FED 2 1286 ft. W.
COTTON DRAW UNIT 34 318 ft. E.*

*All distances are estimated.



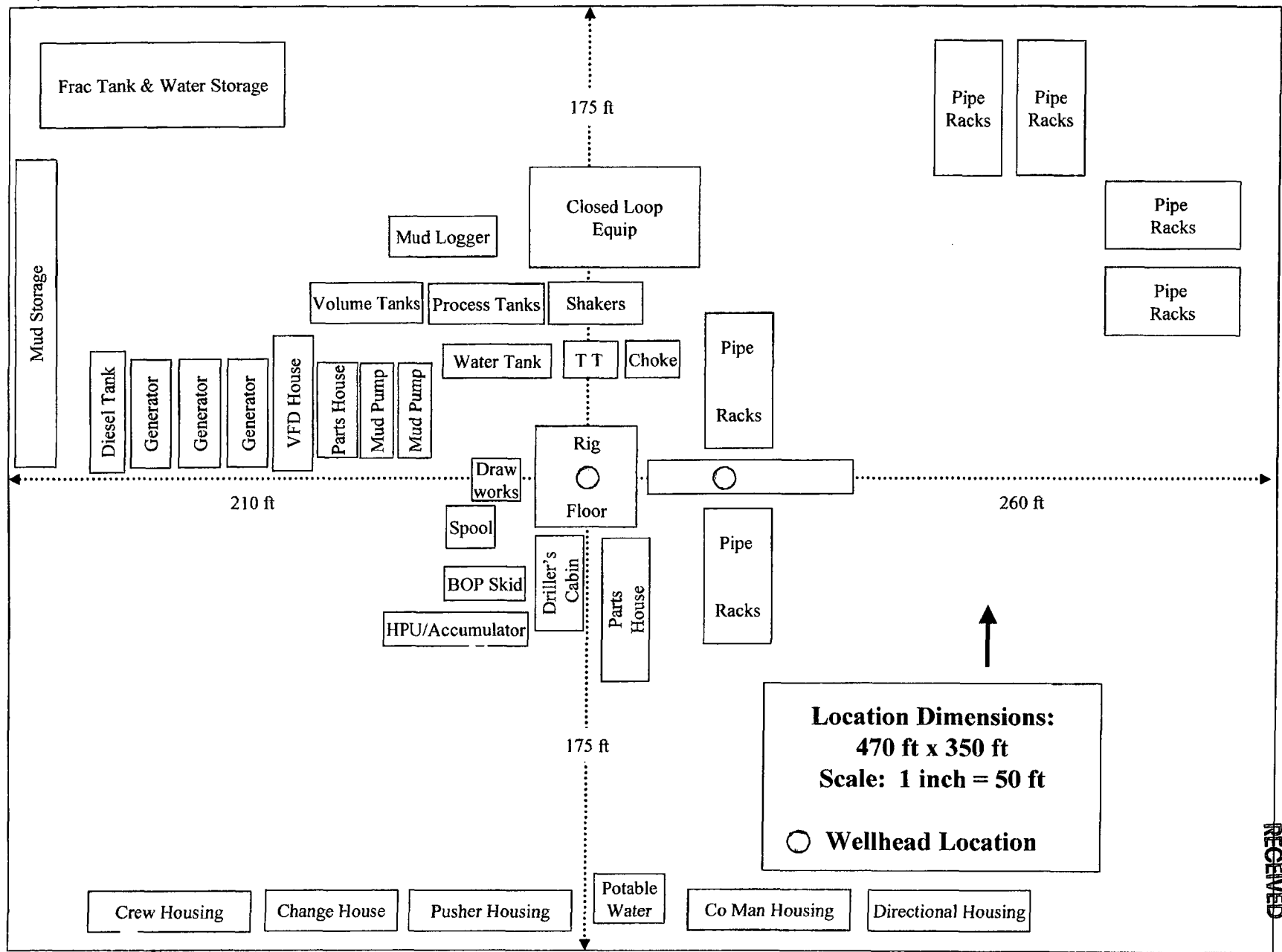
DEVON

PADUCA BREAKS 9 FEDERAL 2H

H&P Flex Rig Location Layout

2 Well Pad

Exhibit D



RECEIVED

JUN 15 2015

HOBBS OCD