

District I  
1625 N. French Dr., Hobbs, NM 88240  
Phone: (575) 393-6161 Fax: (575) 393-0720  
District II  
811 S. First St., Artesia, NM 88210  
Phone: (575) 748-1283 Fax: (575) 748-9720  
District III  
1000 Rio Brazos Road, Aztec, NM 87410  
Phone: (505) 334-6178 Fax: (505) 334-6170  
District IV  
1220 S. St. Francis Dr., Santa Fe, NM 87505  
Phone: (505) 476-3460 Fax: (505) 476-3462

State of New Mexico  
Energy, Minerals & Natural Resources Department  
OIL CONSERVATION DIVISION  
1220 South St. Francis Dr.  
Santa Fe, NM 87505

Form C-102  
Revised August 1, 2011  
Submit one copy to appropriate  
District Office  
☐ AMENDED REPORT

JUN 15 2015

RECEIVED

WELL LOCATION AND ACREAGE DEDICATION PLAT

<sup>1</sup> API Number 30-025-42635	<sup>2</sup> Pool Code 97929	<sup>3</sup> Pool Name WC-025 G-06 S21332D; BONE SPRING
<sup>4</sup> Property Code 314978	<sup>5</sup> Property Name BATTLE 34 FEDERAL	<sup>6</sup> Well Number 3H
<sup>7</sup> OGRID No. 160825	<sup>8</sup> Operator Name B.C. OPERATING, INC.	<sup>9</sup> Elevation 3693

<sup>10</sup> Surface Location

UL or lot no.	Section	Township	Range	Lot Idn	Feet from the	North/South line	Feet from the	East/West line	County
N	27	T21S	R33E		64'	SOUTH	2280'	WEST	LEA

<sup>11</sup> Bottom Hole Location If Different From Surface

UL or lot no.	Section	Township	Range	Lot Idn	Feet from the	North/South line	Feet from the	East/West line	County
N	34	T21S	R33E		240'	SOUTH	2280'	WEST	LEA

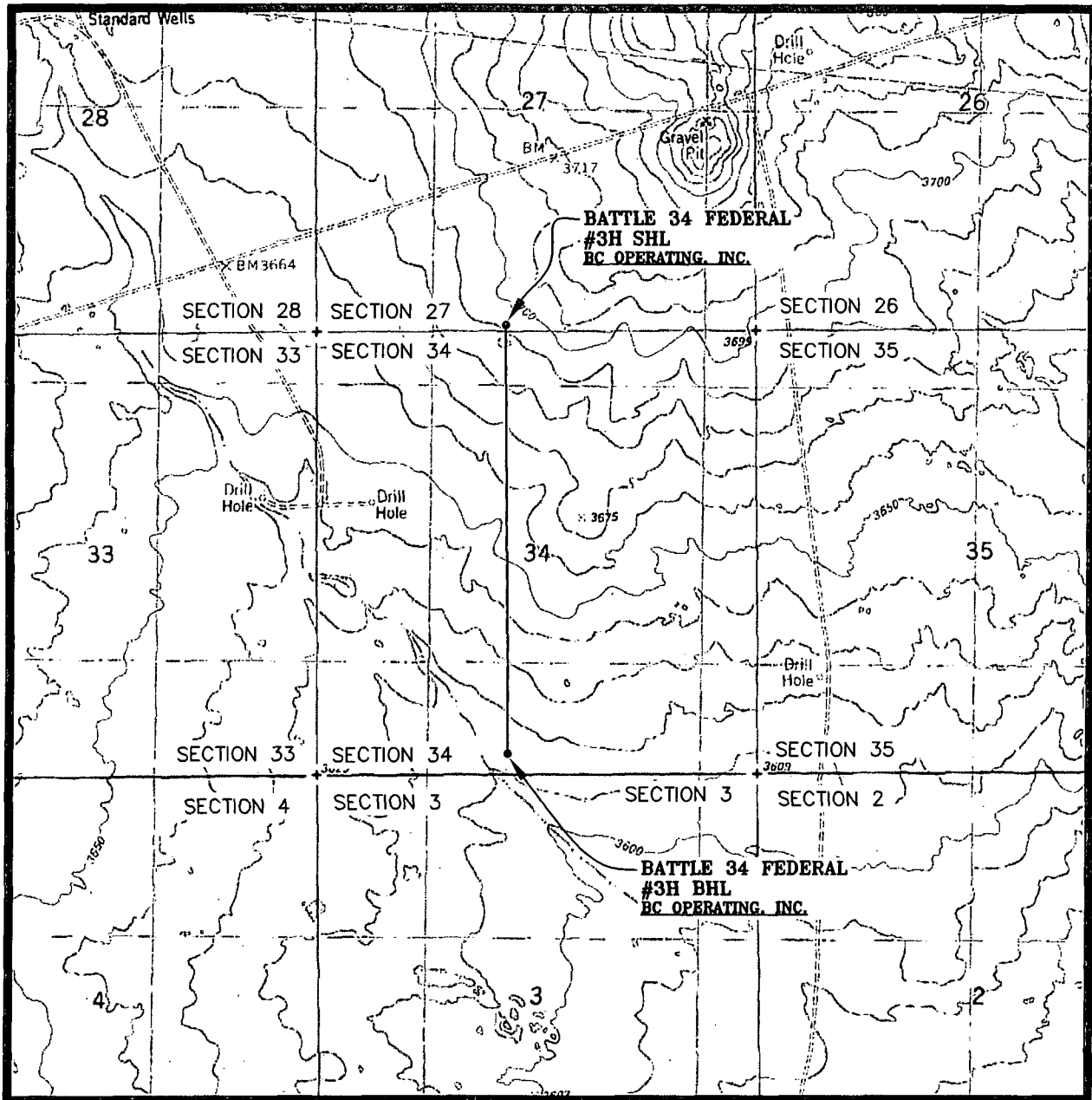
<sup>12</sup> Dedicated Acres 160.00	<sup>13</sup> Joint or Infill	<sup>14</sup> Consolidation Code	<sup>15</sup> Order No.
---	-------------------------------	----------------------------------	-------------------------

No allowable will be assigned to this completion until all interests have been consolidated or a non-standard unit has been approved by the division.

<sup>16</sup> 		<p><b>SURFACE HOLE LOCATION</b> NAD 83, SPCS NM EAST X: 779432.48' / Y: 525660.75' LAT: 32.44274164N / LON: 103.56153366W NAD 27, SPCS NM EAST X: 738250.29' / Y: 525599.65' LAT: 32.44261827N / LON: 103.56104793W</p> <p><b>CORNER COORDINATES</b> NAD 83, SPCS NM EAST A - Y: 525591.57' / X: 778475.85' B - Y: 525599.40' / X: 779798.78' C - Y: 520322.85' / X: 779847.21' D - Y: 520316.19' / X: 778526.54' NAD 27, SPCS NM EAST A - Y: 525530.47' / X: 737293.66' B - Y: 525538.30' / X: 738616.58' C - Y: 520261.91' / X: 738664.89' D - Y: 520255.25' / X: 737344.23'</p> <p><b>BOTTOM HOLE LOCATION</b> NAD 83, SPCS NM EAST X: 779483.46' / Y: 520561.02' LAT: 32.42872370N / LON: 103.56148787W NAD 27, SPCS NM EAST X: 738301.15' / Y: 520500.07' LAT: 32.42860030N / LON: 103.56100259W</p>	<p><b><sup>17</sup> OPERATOR CERTIFICATION</b> I hereby certify that the information contained herein is true and complete to the best of my knowledge and belief, and that this organization either owns a working interest or unleased mineral interest in the land including the proposed bottom hole location or has a right to drill this well at this location pursuant to a contract with an owner of such a mineral or working interest, or to a voluntary pooling agreement or a compulsory pooling order heretofore entered by the division.</p> <p><i>Pam Stevens</i> 7/30/14 Signature Date <i>Pam Stevens</i> Printed Name <i>pstevens@bcoperating.com</i> E-mail Address</p> <p><b><sup>18</sup> SURVEYOR CERTIFICATION</b> I hereby certify that the well location shown on this plat was plotted from field notes of actual surveys made by me or under my supervision, and that the same is true and correct to the best of my belief.</p> <p>JULY 21, 2014 Date of Survey Signature and Seal of Professional Surveyor <i>Lloyd P. Short</i> Certificate Number LLOYD P. SHORT 21653</p>
-------------------	--	---	---

JUN 16 2015

# LOCATION VERIFICATION MAP

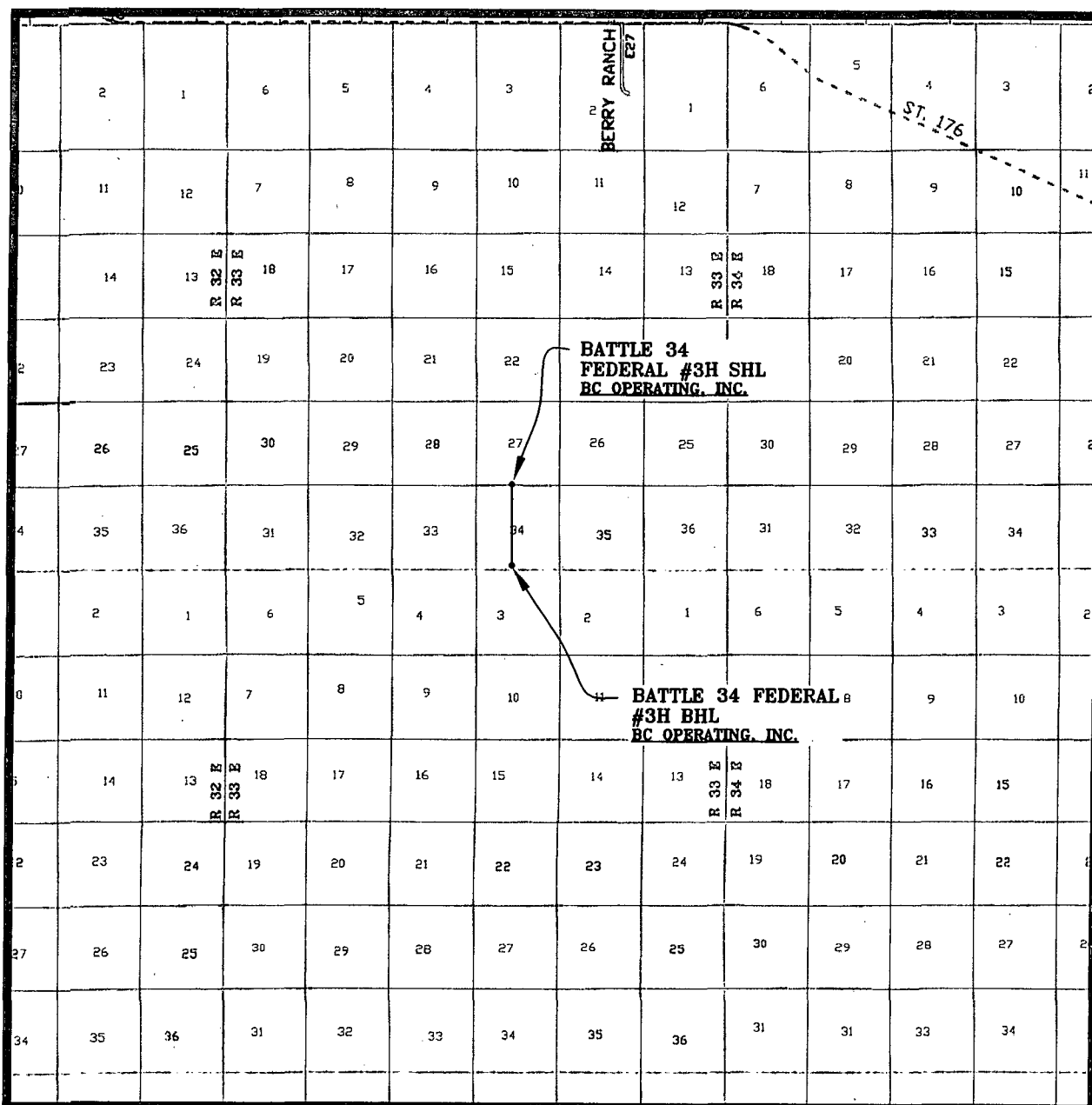


SEC. 27 TWP. 21-S RGE. 33-E  
SURVEY: N.M.P.M.  
COUNTY: LEA  
DESCRIPTION: 64' FSL & 2280' FWL  
ELEVATION: 3693'  
OPERATOR: B.C. OPERATING, INC.  
LEASE: BATTLE  
U.S.G.S. TOPOGRAPHIC MAP: GRAMA RIDGE, N.M.

SCALE: 1" = 2000'  
CONTOUR INTERVAL = 5'

PREPARED BY:  
R-SQUARED GLOBAL, LLC  
1309 LOUISVILLE AVENUE, MONROE, LA 71201  
318-323-6900 OFFICE

# VICINITY MAP

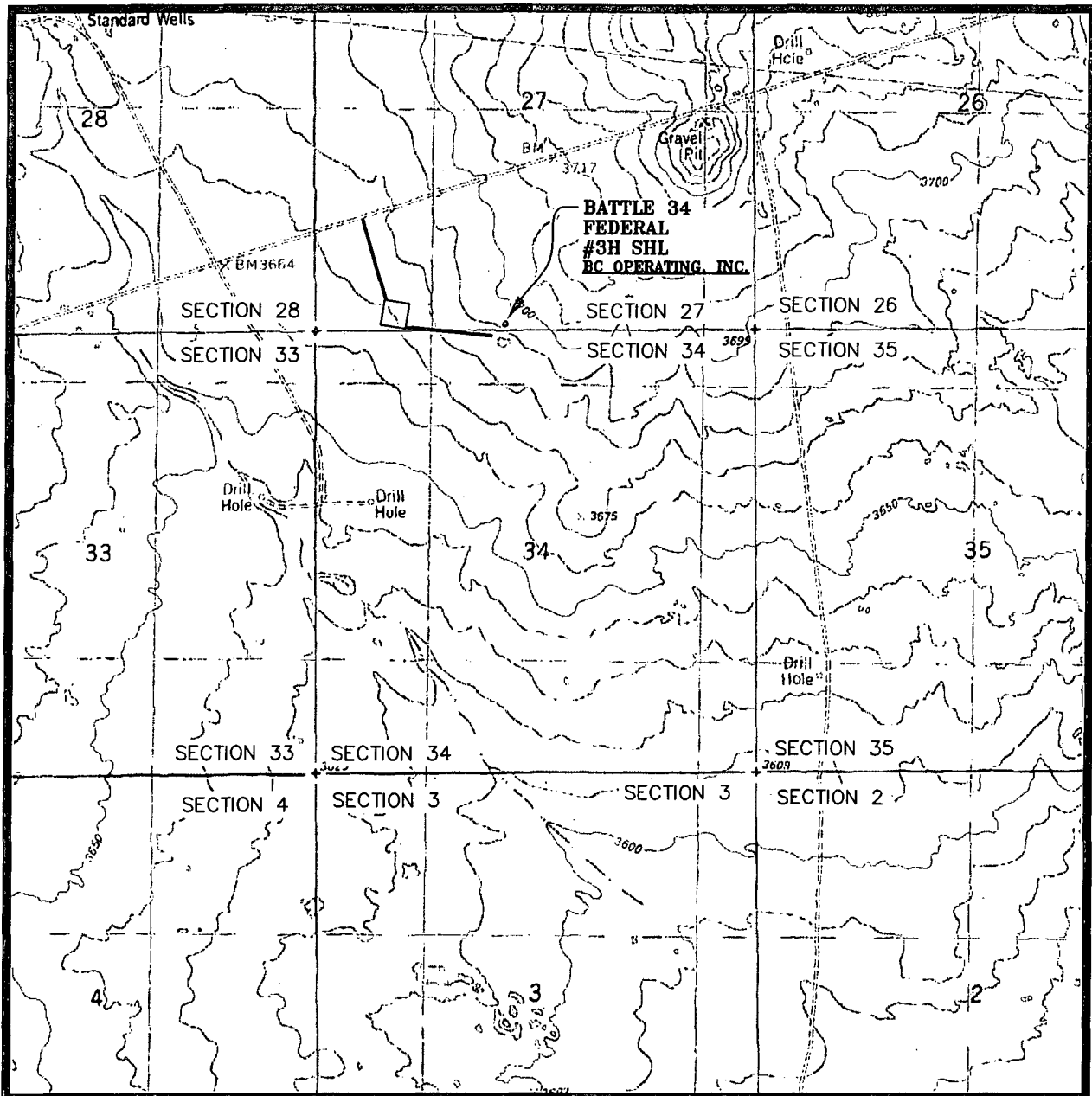


SEC. 27 TWP. 21-S RGE. 33-E  
 SURVEY: N.M.P.M.  
 COUNTY: LEA  
 DESCRIPTION: 64' FSL & 2280' FWL  
 ELEVATION: 3693'  
 OPERATOR: B.C. OPERATING, INC.  
 LEASE: BATTLE  
 U.S.G.S. TOPOGRAPHIC MAP: GRAMA RIDGE, N.M.

SCALE: 1" = 2 MILES

PREPARED BY:  
 R-SQUARED GLOBAL, LLC  
 1309 LOUISVILLE AVENUE, MONROE, LA 71201  
 318-323-6900 OFFICE

# WELL PAD LOCATION VERIFICATION MAP



SEC. 27 TWP. 21-S RGE. 33-E  
SURVEY: N.M.P.M.  
COUNTY: LEA  
DESCRIPTION: 64' FSL & 2280' FWL  
ELEVATION: 3693'  
OPERATOR: B.C. OPERATING, INC.  
LEASE: BATTLE  
U.S.G.S. TOPOGRAPHIC MAP: GRAMA RIDGE, N.M.

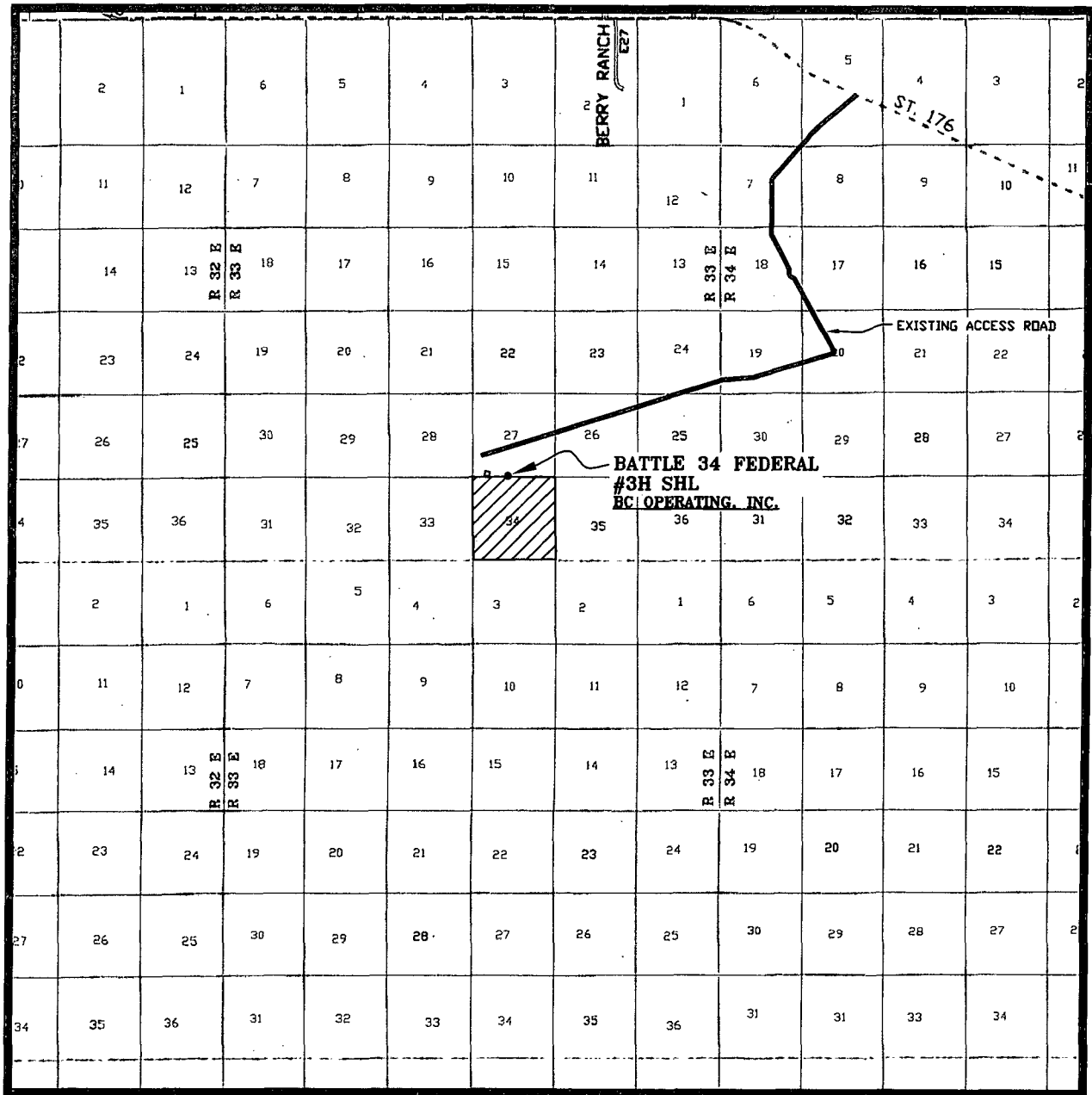
SCALE: 1" = 2000'  
CONTOUR INTERVAL = 5'

PREPARED BY:  
R-SQUARED GLOBAL, LLC  
1309 LOUISVILLE AVENUE, MONROE, LA 71201  
318-323-6900 OFFICE

# EXISTING ACCESS ROAD VICINITY MAP

BATTLE 34 FEDERAL #3H  
64' FSL & 2280' FWL  
SEC. 27 TWP. 21-S RGE. 33-E  
SURVEY: N.M.P.M.  
COUNTY: LEA

U.S.G.S. TOPOGRAPHIC MAP: GRAMA RIDGE, N.M.



SCALE: 1" = 2 MILES

PREPARED BY:  
R-SQUARED GLOBAL, LLC  
1309 LOUISVILLE AVENUE, MONROE, LA 71201  
318-323-6900 OFFICE

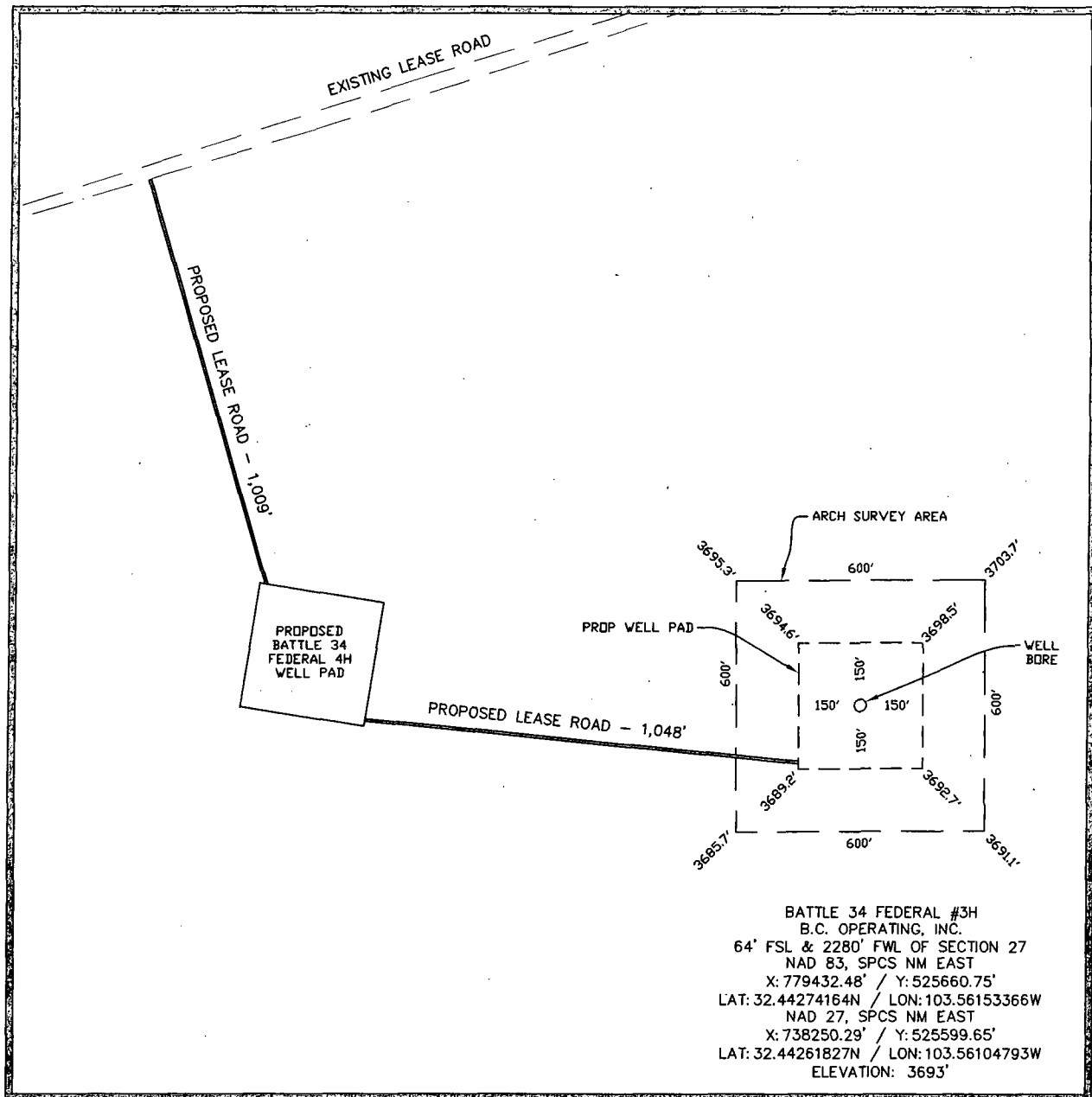
# WELL PAD TOPO

SEC. 27 TWP. 21-S RGE. 33-E

SURVEY: N.M.P.M.

COUNTY: LEA

U.S.G.S. TOPOGRAPHIC MAP: GRAMA RIDGE, N.M.



## DIRECTIONS TO LOCATION:

FROM THE INTERSECTION OF WEST CARLSBAD HIGHWAY AND HIGHWAY 176 TRAVEL  
SOUTHEAST ON HIGHWAY 176 FOR 14.7 MILES TO LEASE ROAD ON THE RIGHT. TRAVEL  
SOUTHEAST ON LEASE ROAD FOR 3.7 MILES TO LEASE ROAD. TAKING A RIGHT ONTO  
SAID LEASE ROAD TRAVEL SOUTHWEST FOR 4.5 MILES TO PROPOSED LEASE ROAD.

10' 0' 10' 200'

SCALE: 1" = 200'

PREPARED BY:  
R-SQUARED GLOBAL, LLC  
1309 LOUISVILLE AVENUE, MONROE, LA 71201  
318-323-6900 OFFICE

# MINERAL MAP

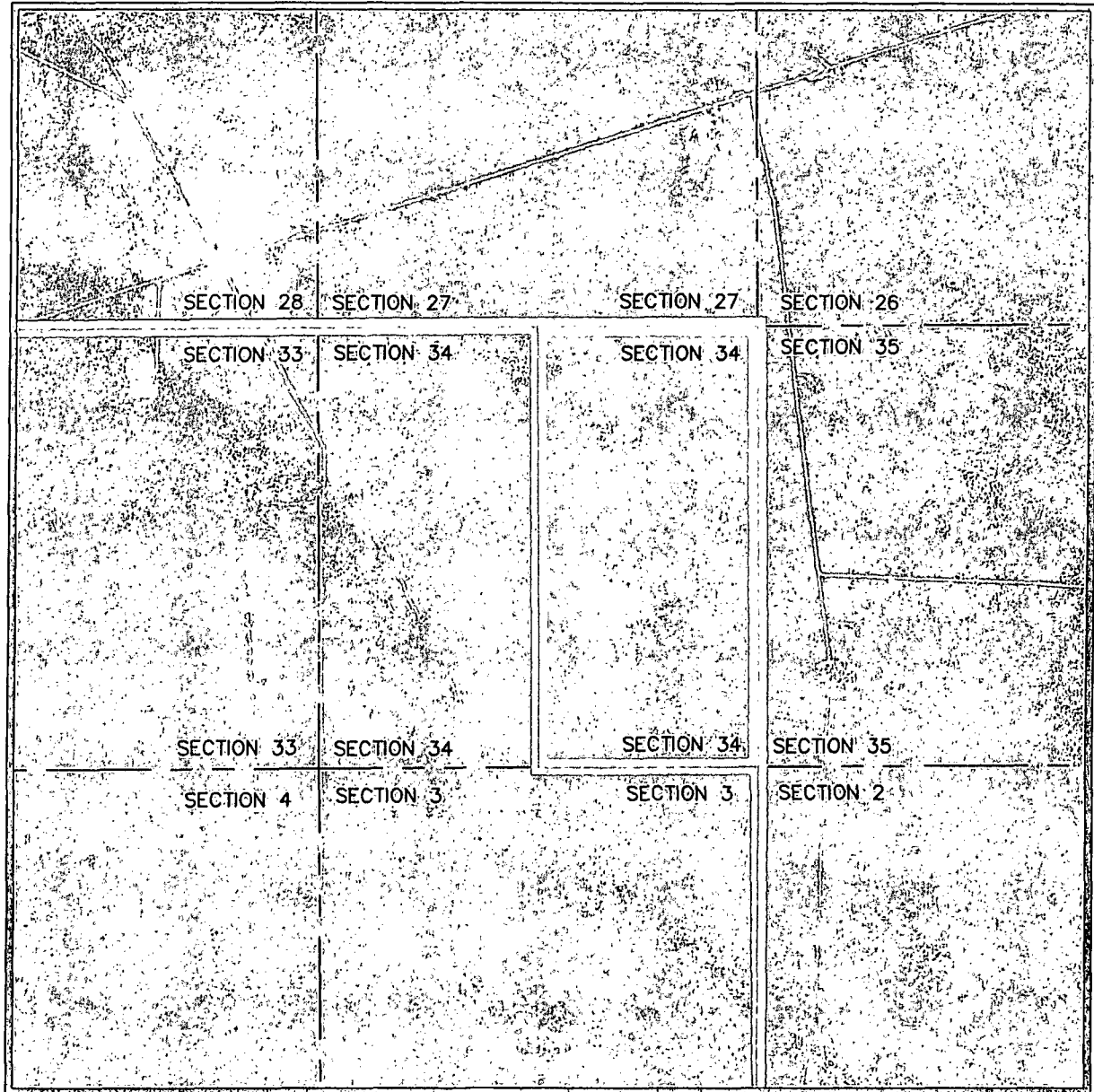
BATTLE 34 FEDERAL

SEC. 27 TWP. 21-S RGE. 33-E

SURVEY: N.M.P.M.

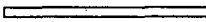
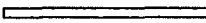
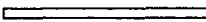
COUNTY: LEA

U.S.G.S. TOPOGRAPHIC MAP: GRAMA RIDGE, N.M.



## LEGEND

SCALE: 1" = 1000'

- STATE MINERALS 
- FEDERAL MINERAL 
- FEE MINERALS 

PREPARED BY:  
R-SQUARED GLOBAL, LLC  
1309 LOUISVILLE AVENUE, MONROE, LA 71201  
318-323-6900 OFFICE