

District I  
1625 N. French Dr., Hobbs, NM 88240  
Phone: (575) 393-6161 Fax: (575) 393-0720  
District II  
811 S. First St., Artesia, NM 88210  
Phone: (575) 748-1283 Fax: (575) 748-9720  
District III  
1000 Rio Brazos Road, Aztec, NM 87410  
Phone: (505) 334-6178 Fax: (505) 334-6170  
District IV  
1220 S. St. Francis Dr., Santa Fe, NM 87505  
Phone: (505) 476-3460 Fax: (505) 476-3462

State of New Mexico  
Energy, Minerals & Natural Resources  
Department  
OIL CONSERVATION DIVISION  
1220 South St. Francis Dr.  
Santa Fe, NM 87505

FORM C-102  
Revised August 1, 2011  
Submit one copy to appropriate  
District Office  
JUN 24 2015  
☐ AMENDED REPORT

RECEIVED  
WELL LOCATION AND ACREAGE DEDICATION PLAT

<sup>1</sup> API Number <b>30-025-42353</b>	<sup>2</sup> Pool Code	<sup>3</sup> Pool Name
<sup>4</sup> Property Code	<sup>5</sup> Property Name <b>RANGER STATE 33 20 35 RN</b>	<sup>6</sup> Well Number <b>#122H</b>
<sup>7</sup> OGRID No.	<sup>8</sup> Operator Name <b>MATADOR PRODUCTION COMPANY</b>	<sup>9</sup> Elevation <b>3699'</b>

<sup>10</sup>Surface Location

UL or lot no.	Section	Township	Range	Lot Idn	Feet from the	North/South line	Feet from the	East/West line	County
<b>D</b>	<b>33</b>	<b>20-S</b>	<b>35-E</b>	<b>-</b>	<b>302'</b>	<b>NORTH</b>	<b>1209'</b>	<b>WEST</b>	<b>LEA</b>

UL or lot no.	Section	Township	Range	Lot Idn	Feet from the	North/South line	Feet from the	East/West line	County
<b>N</b>	<b>33</b>	<b>20-S</b>	<b>35-E</b>	<b>-</b>	<b>241'</b>	<b>SOUTH</b>	<b>1799'</b>	<b>WEST</b>	<b>LEA</b>

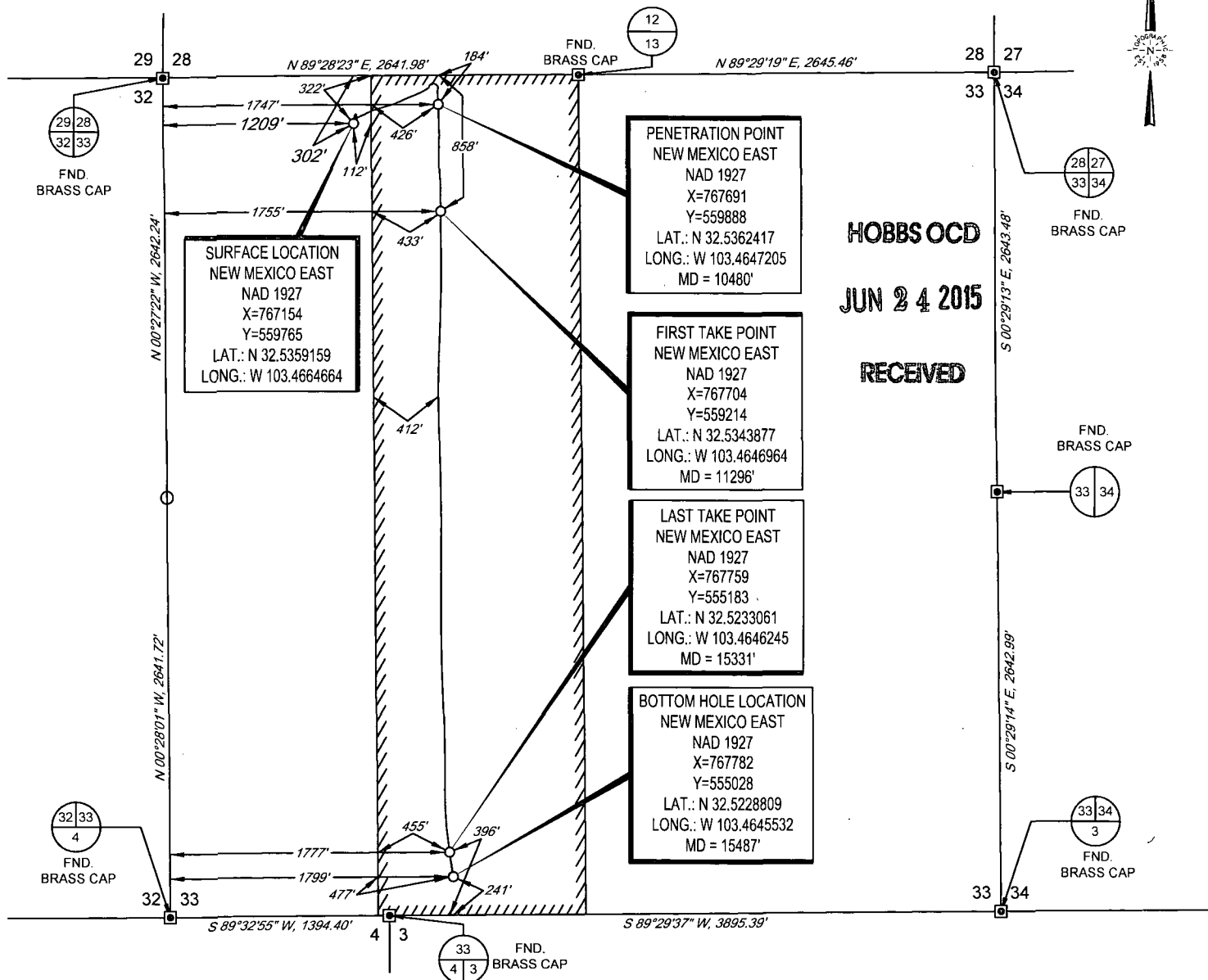
<sup>12</sup> Dedicated Acres	<sup>13</sup> Joint or Infill	<sup>14</sup> Consolidation Code	<sup>15</sup> Order No.
-------------------------------	-------------------------------	----------------------------------	-------------------------

No allowable will be assigned to this completion until all interests have been consolidated or a non-standard unit has been approved by the division.

<p><b>SURFACE LOCATION</b> NEW MEXICO EAST NAD 1927 X=767154 Y=559765 LAT.: N 32.5359159 LONG.: W 103.4664664</p>	<p><b>PENETRATION POINT</b> NEW MEXICO EAST NAD 1927 X=767691 Y=559888 LAT.: N 32.5362417 LONG.: W 103.4647205 MD = 10480'</p>	<p><b>17 OPERATOR CERTIFICATION</b> I hereby certify that the information contained herein is true and complete to the best of my knowledge and belief, and that this organization either owns a working interest or unleased mineral interest in the land including the proposed bottom hole location or has a right to drill this well at this location pursuant to a contract with an owner of such a mineral or working interest, or to a voluntary pooling agreement or a compulsory pooling order heretofore entered by the division.</p> <p><i>Trey Goodwin</i> 6/19/15 Signature Date Trey Goodwin Printed Name TGoodwin@matadorresources.com E-mail Address</p>
	<p><b>FIRST TAKE POINT</b> NEW MEXICO EAST NAD 1927 X=767704 Y=559214 LAT.: N 32.5343877 LONG.: W 103.4646964 MD = 11296'</p>	
	<p><b>LAST TAKE POINT</b> NEW MEXICO EAST NAD 1927 X=767759 Y=555183 LAT.: N 32.5233061 LONG.: W 103.4646245 MD = 15331'</p>	
	<p><b>BOTTOM HOLE LOCATION</b> NEW MEXICO EAST NAD 1927 X=767782 Y=555028 LAT.: N 32.5228809 LONG.: W 103.4645532 MD = 15487'</p>	
<p><b>18 SURVEYOR CERTIFICATION</b> I hereby certify that the well location shown on this plat was plotted from field notes of actual surveys made by me or under my supervision, and that the same is true to the best of my belief.</p> <p>04/23/2015 Date of Survey Signature and Seal of Professional Surveyor</p> <p><i>Michael B. Brown</i> MICHAEL B. BROWN NEW MEXICO 18329 PROFESSIONAL SURVEYOR</p> <p>Certificate Number</p>		<p>JUN 24 2015</p>

SCALE: 1" = 1000'  
0' 500' 1000'

SECTION 33, TOWNSHIP 20-S, RANGE 35-E, N.M.P.M.  
LEA COUNTY, NEW MEXICO

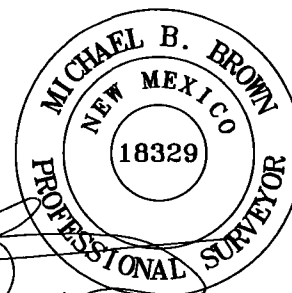


LEASE NAME & WELL NO.: RANGER STATE 33 20 35 RN #122H  
SECTION 33 TWP 20-S RGE 35-E SURVEY N.M.P.M.  
COUNTY LEA STATE NM ELEVATION 3699'  
DESCRIPTION 302' FNL & 1209' FWL



**TOPOGRAPHIC**  
LOYALTY INNOVATION LEGACY

1400 EVERMAN PARKWAY, Ste. 197 • FT. WORTH, TEXAS 76140  
TELEPHONE: (817) 744-7512 • FAX (817) 744-7548  
2903 NORTH BIG SPRING • MIDLAND, TEXAS 79705  
TELEPHONE: (432) 682-1653 OR (800) 767-1653 • FAX (432) 682-1743  
WWW.TOPOGRAPHIC.COM



Michael Blake Brown, P.S. No. 18329  
JUNE 19, 2015

RANGER STATE 33 20 35 RN #122H AS-COMPLETED	REVISION:	
	INT	DATE
DATE: 06/19/15		
FILE: AD_RANGER_STATE_33_20_35_RN_122H		
DRAWN BY: S.V.		
SHEET: 1 OF 1		

NOTES:

1. ORIGINAL DOCUMENT SIZE: 8.5" X 11"
2. ALL BEARINGS, DISTANCES, AND COORDINATE VALUES CONTAINED HEREIN ARE GRID BASED UPON THE NEW MEXICO STATE PLANE COORDINATE SYSTEM, EAST ZONE, U.S. SURVEY FEET, NORTH AMERICAN DATUM 1927.
3. CERTIFICATION IS MADE ONLY TO THE LOCATION OF THIS EASEMENT, IN RELATION TO THE EVIDENCE FOUND DURING A FIELD SURVEY, MADE ON THE GROUND, UNDER MY SUPERVISION, AND USING DOCUMENTATION PROVIDED BY MATADOR PRODUCTION COMPANY. ONLY UTILITIES/EASEMENTS THAT WERE VISIBLE ON THE DATE OF THIS SURVEY, WITHIN/ADJOINING THIS EASEMENT, HAVE BEEN LOCATED AS SHOWN HEREON OF WHICH I HAVE KNOWLEDGE. THIS CERTIFICATION IS LIMITED TO THOSE PERSONS OR ENTITIES SHOWN ON THE FACE OF THIS PLAT AND IS NON-TRANSFERABLE, AND MADE FOR THIS TRANSACTION ONLY.