

District I
1625 N. French Dr., Hobbs, NM 88240
Phone: (575) 393-6161 Fax: (575) 393-0720
District II
811 S. First St., Artesia, NM 88210
Phone: (575) 748-1283 Fax: (575) 748-9720
District III
1000 Rio Brazos Road, Aztec, NM 87410
Phone: (505) 334-6178 Fax: (505) 334-6170
District IV
1220 S. St. Francis Dr., Santa Fe, NM 87505
Phone: (505) 476-3460 Fax: (505) 476-3462

State of New Mexico
Energy, Minerals & Natural Resources Department
OIL CONSERVATION DIVISION
1220 South St. Francis Dr.
Santa Fe, NM 87505

Form C-102
Revised August 1, 2011
Submit one copy to appropriate
District Office

☐ AMENDED REPORT

WELL LOCATION AND ACREAGE DEDICATION PLAT

¹ API Number 30-025-42654	² Pool Code 55610	³ Pool Name SCHARB; BONE SPRING
⁴ Property Code 315002	⁵ Property Name GADWALL 2 STATE	⁶ Well Number 1H
⁷ GRID No. 6137	⁸ Operator Name DEVON ENERGY PRODUCTION COMPANY, L.P.	⁹ Elevation 3980.3

¹⁰ Surface Location

UL or lot no.	Section	Township	Range	Lot Idn	Feet from the	North/South line	Feet from the	East/West line	County
N	2	19 S	34 E		315	SOUTH	1955	WEST	LEA

¹¹ Bottom Hole Location If Different From Surface

UL or lot no.	Section	Township	Range	Lot Idn	Feet from the	North/South line	Feet from the	East/West line	County
3	2	19 S	34 E		330	NORTH	1980	WEST	LEA

¹² Dedicated Acres	¹³ Joint or Infill	¹⁴ Consolidation Code	¹⁵ Order No.

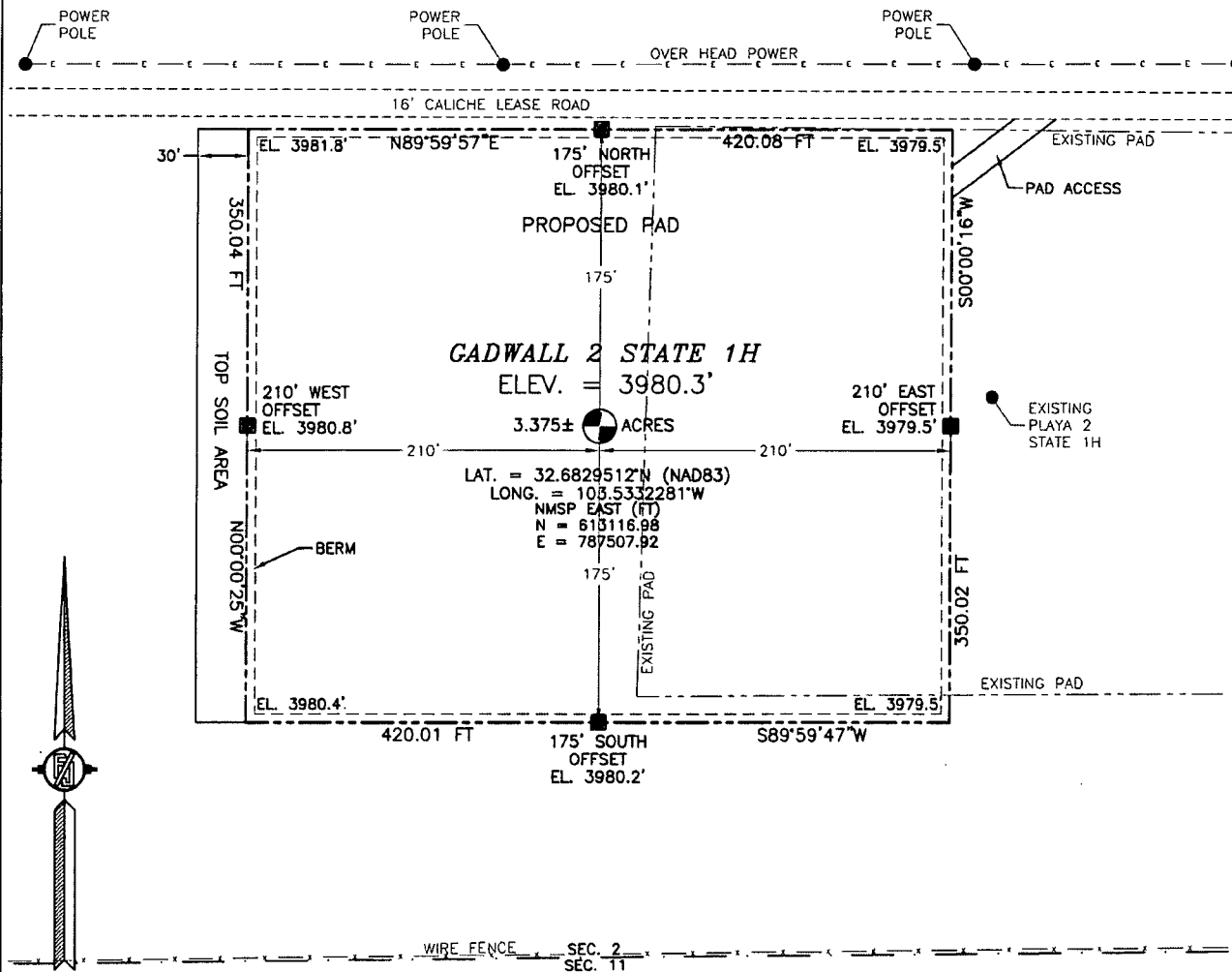
No allowable will be assigned to this completion until all interests have been consolidated or a non-standard unit has been approved by the division.

<p>N89°33'06"E 2641.02 FT</p> <p>1980'</p> <p>NW CORNER SEC. 2 LAT. = 32.6969578°N LONG. = 103.5395462°W NMSP EAST (FT) N = 618198.32 E = 785525.82</p> <p>W/4 CORNER SEC. 2 LAT. = 32.6893250°N LONG. = 103.5395658°W NMSP EAST (FT) N = 615421.29 E = 785540.57</p> <p>SW CORNER SEC. 2 LAT. = 32.6820714°N LONG. = 103.5395827°W NMSP EAST (FT) N = 612782.20 E = 785555.11</p> <p>1955'</p> <p>S89°25'03"W 2643.01 FT</p>		<p>N89°30'18"E 2641.22 FT</p> <p>N/4 CORNER SEC. 2 LAT. = 32.6969600°N LONG. = 103.5309632°W NMSP EAST (FT) N = 618218.98 E = 788166.21</p> <p>NE CORNER SEC. 2 LAT. = 32.6969675°N LONG. = 103.5223797°W NMSP EAST (FT) N = 618241.79 E = 790806.78</p> <p>E/4 CORNER SEC. 2 LAT. = 32.6893705°N LONG. = 103.5223955°W NMSP EAST (FT) N = 615477.78 E = 790823.06</p> <p>SE CORNER SEC. 2 LAT. = 32.6821092°N LONG. = 103.5224069°W NMSP EAST (FT) N = 612835.92 E = 790839.74</p> <p>S89°25'03"W 2643.01 FT</p>		<p>¹⁷ OPERATOR CERTIFICATION</p> <p>I hereby certify that the information contained herein is true and complete to the best of my knowledge and belief, and that this organization either owns a working interest or undivided mineral interest in the land including the proposed bottom hole location or has a right to drill this well at this location pursuant to a contract with an owner of such a mineral or working interest, or to a voluntary pooling agreement or a compulsory pooling order heretofore entered by the division.</p> <p><i>Tami Luird</i> 6/29/15 Signature Date Tami Luird, Reg Compliance Printed Name tami.luird@devn.com E-mail Address</p> <p>¹⁸ SURVEYOR CERTIFICATION</p> <p>I hereby certify that the well location shown on this plat was plotted from field notes of actual surveys made by me or under my supervision, and that the same is true and correct to the best of my knowledge.</p> <p>APRIL 28 2015 Date of Survey FILIMON E. JARAMILLO, PLS 12797 Signature and Seal of Professional Surveyor Certificate Number: FILIMON E. JARAMILLO, PLS 12797 SURVEY NO. 3933</p>
---	--	---	--	--

JUL 01 2015

SECTION 2, TOWNSHIP 19 SOUTH, RANGE 34 EAST, N.M.P.M.
LEA COUNTY, STATE OF NEW MEXICO
SITE MAP

NOTE: LATITUDE AND LONGITUDE COORDINATES ARE SHOWN USING THE NORTH AMERICAN DATUM OF 1983 (NAD83). LISTED NEW MEXICO STATE PLANE EAST COORDINATES ARE GRID (NAD83). BASIS OF BEARING AND DISTANCES USED ARE NEW MEXICO STATE PLANE EAST COORDINATES MODIFIED TO THE SURFACE.



010 50 100 200

SCALE 1" = 100'

DIRECTIONS TO LOCATION

FROM MILE MARKER 23 ON STATE ROAD 529 GO EAST ABOUT 200 FT. ON SR 529 TO CALICHE LEASE ROAD ACROSS SR 529 FROM VAN NOY ROAD TURN SOUTH (RIGHT) ON CALICHE LEASE ROAD 1.0 MILE TO CALICHE LEASE ROAD ON RIGHT GO WEST 0.13 MILE TO PROPOSED NORTHEAST CORNER OF PAD

DEVON ENERGY PRODUCTION COMPANY, L.P.

GADWALL 2 STATE 1H

LOCATED 315 FT. FROM THE SOUTH LINE
AND 1955 FT. FROM THE WEST LINE OF
SECTION 2, TOWNSHIP 19 SOUTH,
RANGE 34 EAST, N.M.P.M.
LEA COUNTY, STATE OF NEW MEXICO

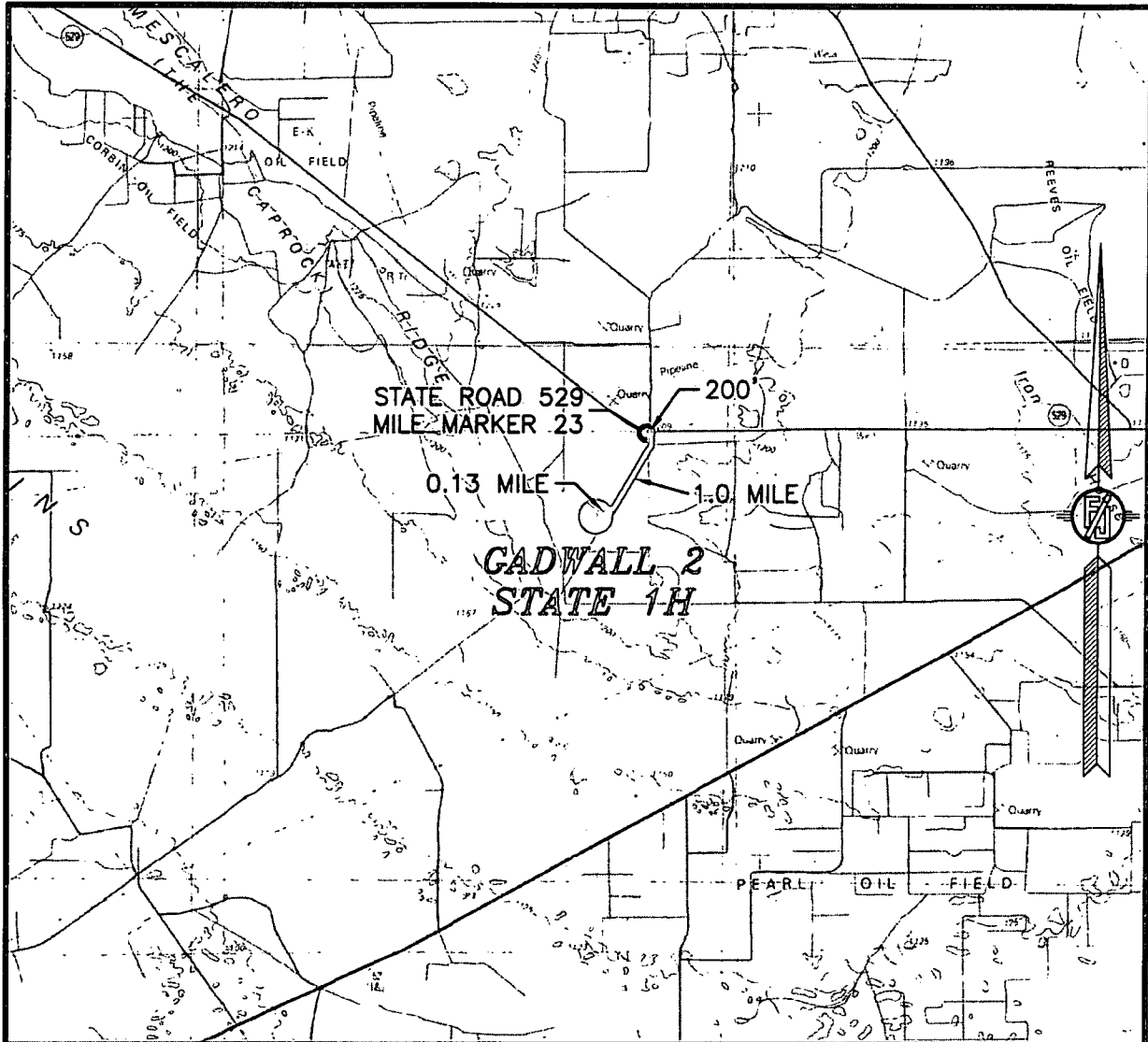
APRIL 28, 2015

SURVEY NO. 3933

MADRON SURVEYING, INC. 301 SOUTH CANAL (575) 234-3341

CARLSBAD, NEW MEXICO

SECTION 2, TOWNSHIP 19 SOUTH, RANGE 34 EAST, N.M.P.M.
LEA COUNTY, STATE OF NEW MEXICO
VICINITY MAP



DISTANCES IN MILES

NOT TO SCALE

DIRECTIONS TO LOCATION

FROM MILE MARKER 23 ON STATE ROAD 529 GO EAST ABOUT 200 FT. ON SR 529 TO CALICHE LEASE ROAD ACROSS SR 529 FROM VAN NOY ROAD TURN SOUTH (RIGHT) ON CALICHE LEASE ROAD 1.0 MILE TO CALICHE LEASE ROAD ON RIGHT GO WEST 0.13 MILE TO PROPOSED NORTHEAST CORNER OF PAD

DEVON ENERGY PRODUCTION COMPANY, L.P.
GADWALL 2 STATE 1H

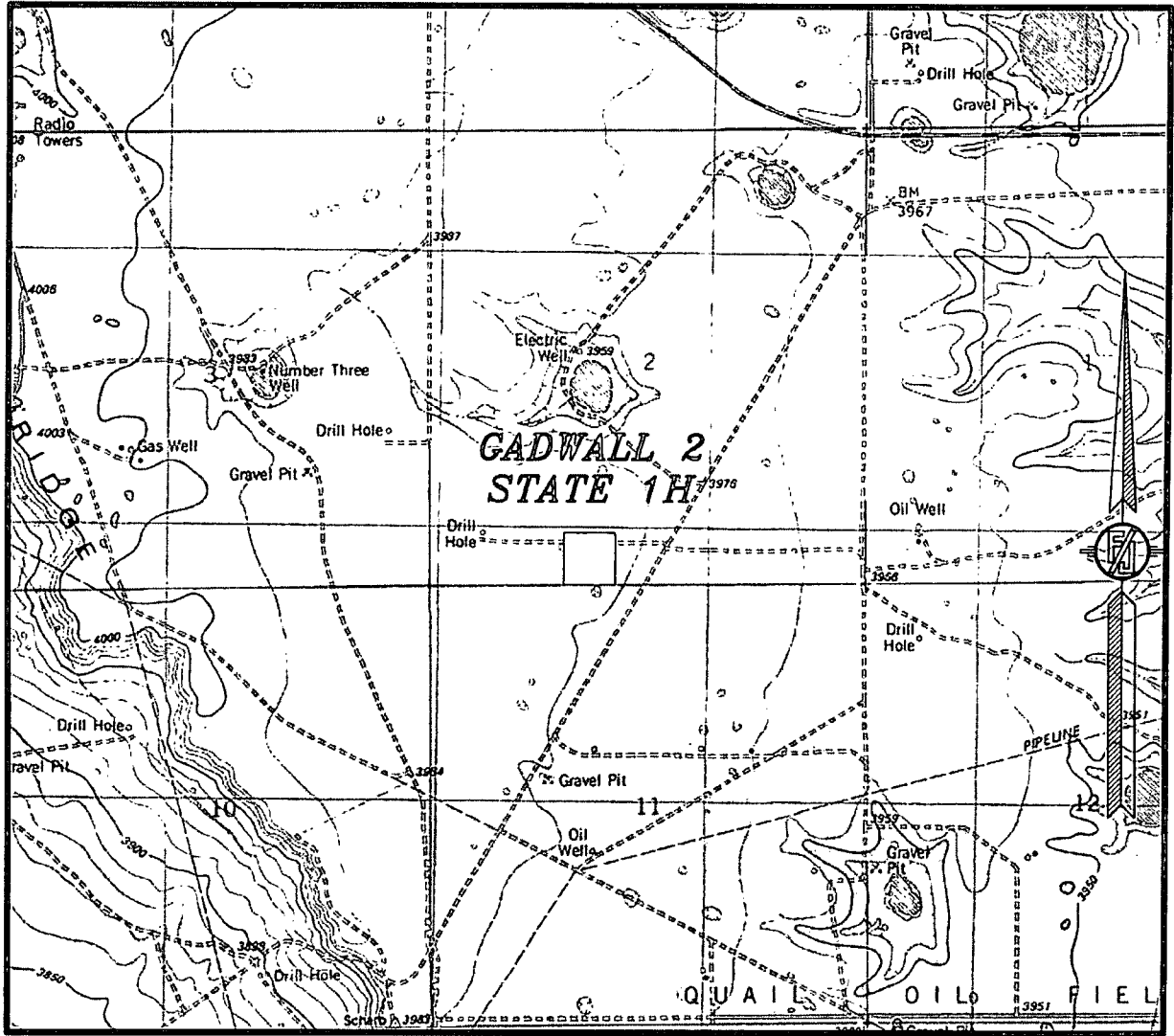
LOCATED 315 FT. FROM THE SOUTH LINE
AND 1955 FT. FROM THE WEST LINE OF
SECTION 2, TOWNSHIP 19 SOUTH,
RANGE 34 EAST, N.M.P.M.
LEA COUNTY, STATE OF NEW MEXICO

APRIL 28, 2015

SURVEY NO. 3933

MADRON SURVEYING, INC. 301 SOUTH CANAL (575) 234-3341 CARLSBAD, NEW MEXICO

SECTION 2, TOWNSHIP 19 SOUTH, RANGE 34 EAST, N.M.P.M.
LEA COUNTY, STATE OF NEW MEXICO
LOCATION VERIFICATION MAP



USGS QUAD MAP:
IRONHOUSE WELL

NOT TO SCALE

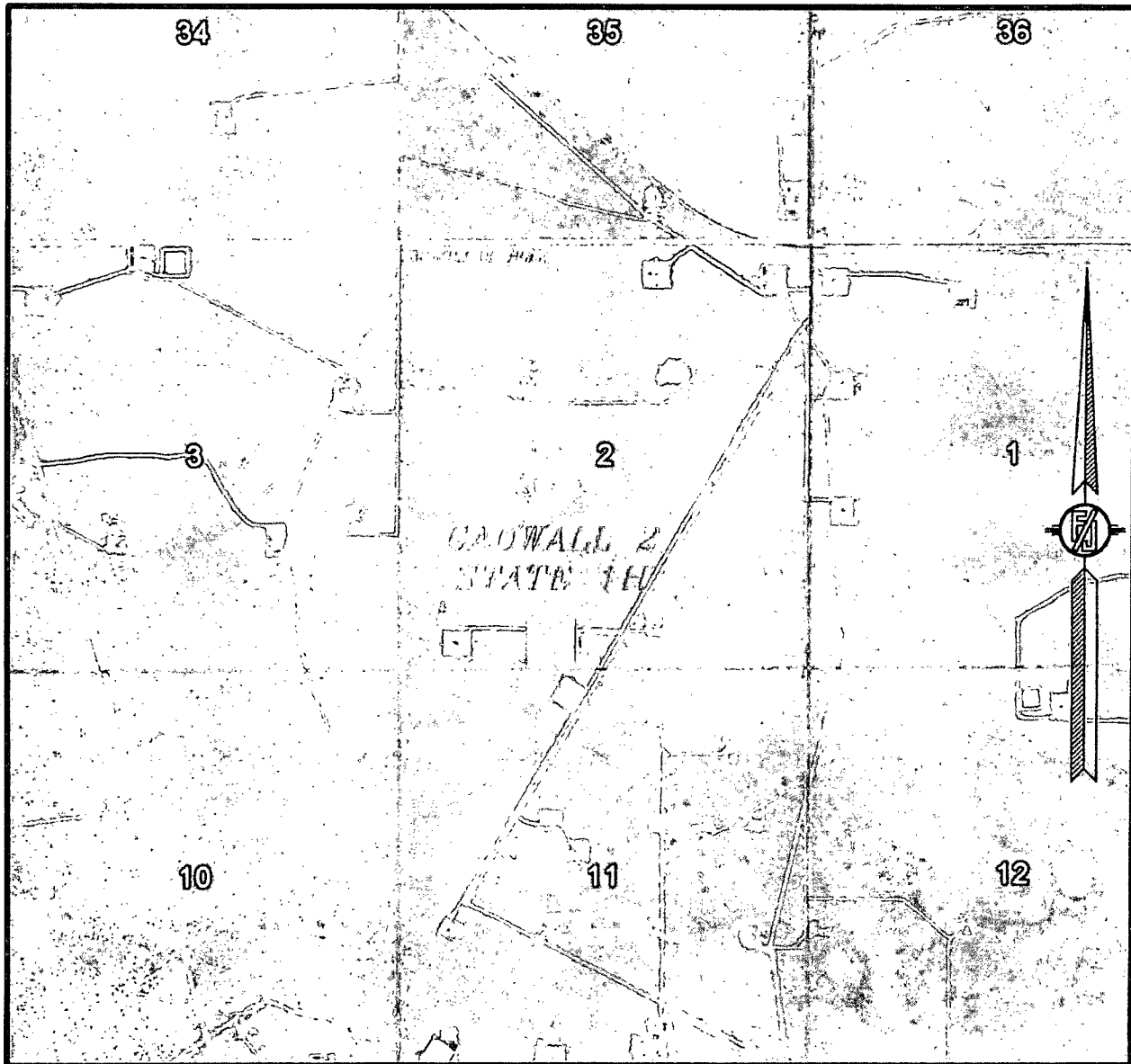
DEVON ENERGY PRODUCTION COMPANY, L.P.
GADWALL 2 STATE 1H

LOCATED 315 FT. FROM THE SOUTH LINE
AND 1955 FT. FROM THE WEST LINE OF
SECTION 2, TOWNSHIP 19 SOUTH,
RANGE 34 EAST, N.M.P.M.
LEA COUNTY, STATE OF NEW MEXICO

APRIL 28, 2015

MADRON SURVEYING, INC. 301 SOUTH CANAL (575) 234-3341 CARLSBAD, NEW MEXICO SURVEY NO. 3933

SECTION 2, TOWNSHIP 19 SOUTH, RANGE 34 EAST, N.M.P.M.
LEA COUNTY, STATE OF NEW MEXICO
AERIAL PHOTO



NOT TO SCALE
AERIAL PHOTO:
GOOGLE EARTH
FEB. 2014

DEVON ENERGY PRODUCTION COMPANY, L.P.
GADWALL 2 STATE 1H

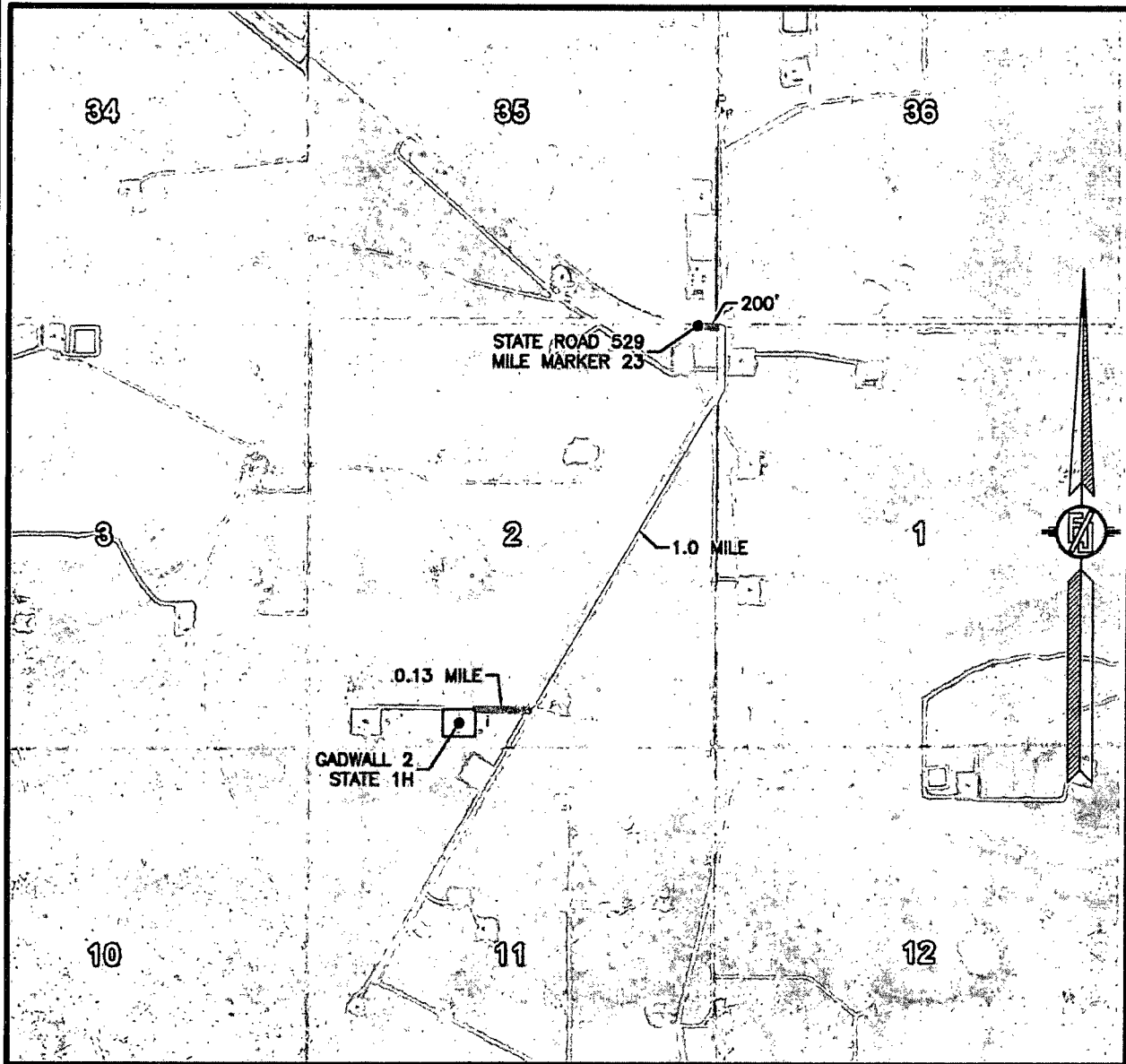
LOCATED 315 FT. FROM THE SOUTH LINE
AND 1955 FT. FROM THE WEST LINE OF
SECTION 2, TOWNSHIP 19 SOUTH,
RANGE 34 EAST, N.M.P.M.
LEA COUNTY, STATE OF NEW MEXICO

APRIL 28, 2015

SURVEY NO. 3933

MADRON SURVEYING, INC. 301 SOUTH CANAL (575) 234-3341 CARLSBAD, NEW MEXICO

SECTION 2, TOWNSHIP 19 SOUTH, RANGE 34 EAST, N.M.P.M.
LEA COUNTY, STATE OF NEW MEXICO
AERIAL ACCESS ROUTE MAP



NOT TO SCALE
AERIAL PHOTO:
GOOGLE EARTH
FEB. 2014

DEVON ENERGY PRODUCTION COMPANY, L.P.
GADWALL 2 STATE 1H

LOCATED 315 FT. FROM THE SOUTH LINE
AND 1955 FT. FROM THE WEST LINE OF
SECTION 2, TOWNSHIP 19 SOUTH,
RANGE 34 EAST, N.M.P.M.
LEA COUNTY, STATE OF NEW MEXICO

APRIL 28, 2015

SURVEY NO. 3933

MADRON SURVEYING, INC. 301 SOUTH CANAL (575) 234-3341 CARLSBAD, NEW MEXICO