

Exhibit A-4

District I
1625 N. French Dr., Hobbs, NM 88240
Phone: (575) 393-6161 Fax: (575) 393-0720

District II
811 S. First St., Artesia, NM 88210
Phone: (575) 748-1283 Fax: (575) 748-9720

District III
1000 Rio Brazos Road, Aztec, NM 87410
Phone: (505) 334-6178 Fax: (505) 334-6170

District IV
1220 S. St. Francis Dr., Santa Fe, NM 87505
Phone: (505) 476-3460 Fax: (505) 476-3462

State of New Mexico
Energy, Minerals & Natural Resources Department
OIL CONSERVATION DIVISION
1220 South St. Francis Dr.
Santa Fe, NM 87505

HOBBS OCD

JUL 02 2015

RECEIVED

Form C-102
Revised August 1, 2011
Submit one copy to appropriate
District Office

☐ AMENDED REPORT

WELL LOCATION AND ACREAGE DEDICATION PLAT

¹ API Number 30-024-42659	² Pool Code 97955	³ Well Name WC-025 0-06 5263319P; B5
⁴ Property Code 313895	⁵ Property Name SALADO DRAW 18 26 33 FED	⁶ Well Number 1H
⁷ OGRID No. 4323	⁸ Operator Name CHEVRON U.S.A. INC.	⁹ Elevation 3176'

10 Surface Location

UL or lot no.	Section	Township	Range	Lot Idn	Feet from the	North/South line	Feet from the	East/West line	County
D	19	26 SOUTH	33 EAST, N.M.P.M.		200'	NORTH	873'	WEST	LEA

11 Bottom Hole Location If Different From Surface

UL or lot no.	Section	Township	Range	Lot Idn	Feet from the	North/South line	Feet from the	East/West line	County
D	18	26 SOUTH	33 EAST, N.M.P.M.		280'	NORTH	355'	WEST	LEA

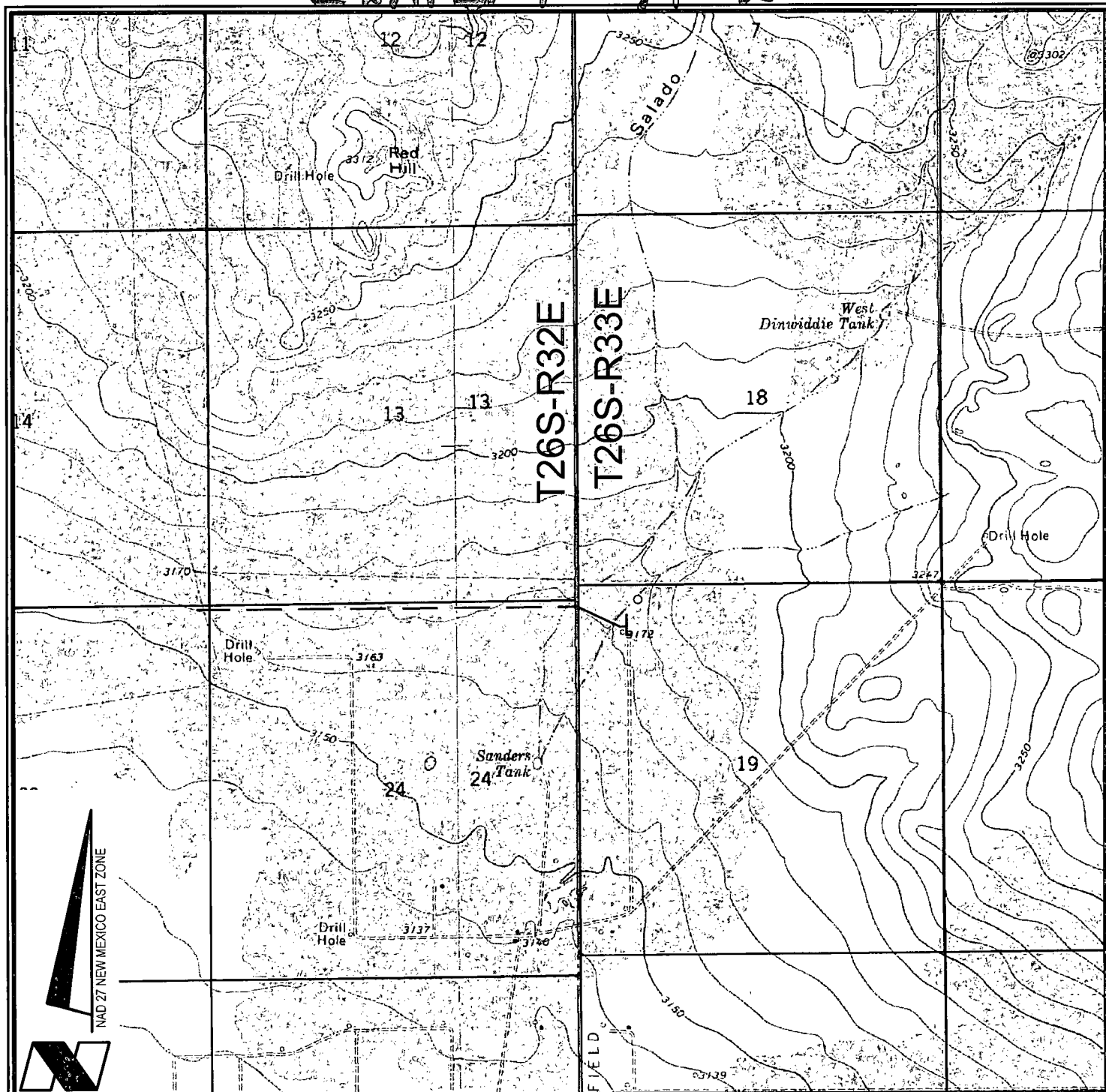
¹² Dedicated Acres 160	¹³ Joint or Infill	¹⁴ Consolidation Code	¹⁵ Order No.
--------------------------------------	-------------------------------	----------------------------------	-------------------------

No allowable will be assigned to this completion until all interests have been consolidated or a non-standard unit has been approved by the division.

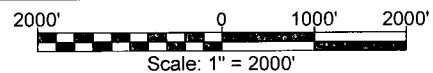
<p>16 PROPOSED BOTTOM HOLE LOCATION</p> <p>X= 721,571 NAD 27 Y= 382,607 LAT. 32.049884 LONG. 103.618196</p> <p>X= 762,758 NAD83 Y= 382,664 LAT. 32.050009 LONG. 103.618665</p> <p>SALADO DRAW 18 26 33 FED NO. 1H WELL</p> <p>X= 722,122 NAD 27 Y= 377,410 LAT. 32.035588 LONG. 103.616531</p> <p>X= 763,309 NAD83 Y= 377,467 LAT. 32.035713 LONG. 103.616999</p> <p>ELEVATION +3176' NAVD 88</p> <p>CORNER COORDINATES TABLE (NAD 27)</p> <p>A - Y=382884.06, X=721214.40 B - Y=382893.93, X=722529.11 C - Y=377603.37, X=721247.39 D - Y=377613.09, X=722563.79 E - Y=376283.20, X=721255.36 F - Y=377603.37, X=721247.39</p>		<p>17 OPERATOR CERTIFICATION</p> <p>I hereby certify that the information contained herein is true and complete to the best of my knowledge and belief, and that this organization either owns a working interest or unleased mineral interest in the land including the proposed bottom hole location or has a right to drill this well at this location pursuant to a contract with an owner of such a mineral or working interest, or to a voluntary pooling agreement or a compulsory pooling order heretofore entered by the division.</p> <p>Cindy Herrera-Murillo 9-10-14 Signature Date</p> <p>Cindy Herrera-Murillo Printed Name</p> <p>CherreraMurillo@chevron.com E-mail Address</p> <p>18 SURVEYOR CERTIFICATION</p> <p>I hereby certify that the well location shown on this plat was plotted from field notes of actual surveys made by me or under my supervision, and that the same is true and correct to the best of my belief.</p> <p>5.6.14 Date of Survey</p> <p>Signature and Seal of Professional Surveyor</p> <p>W. J. DANIEL III NEW MEXICO REGISTERED PROFESSIONAL SURVEYOR 15078</p> <p>Certificate Number 15078</p>
--	--	---

JUL 07 2015

Exhibit A-2



VICINITY MAP



CHEVRON U.S.A. INC.

SALADO DRAW 18 26 33 FED NO. 1H WELL
LOCATED 200' FNL AND 873' FWL
SECTION 19, T26S-R33E
LEA COUNTY, NEW MEXICO



Lafayette New Orleans Houston
135 Regency Sq. Lafayette, LA 70508
Ph. 337-237-2200 Fax. 337-232-3299
www.fenstermaker.com

DRAWN BY: BMO

PROJ. MGR.: VHV

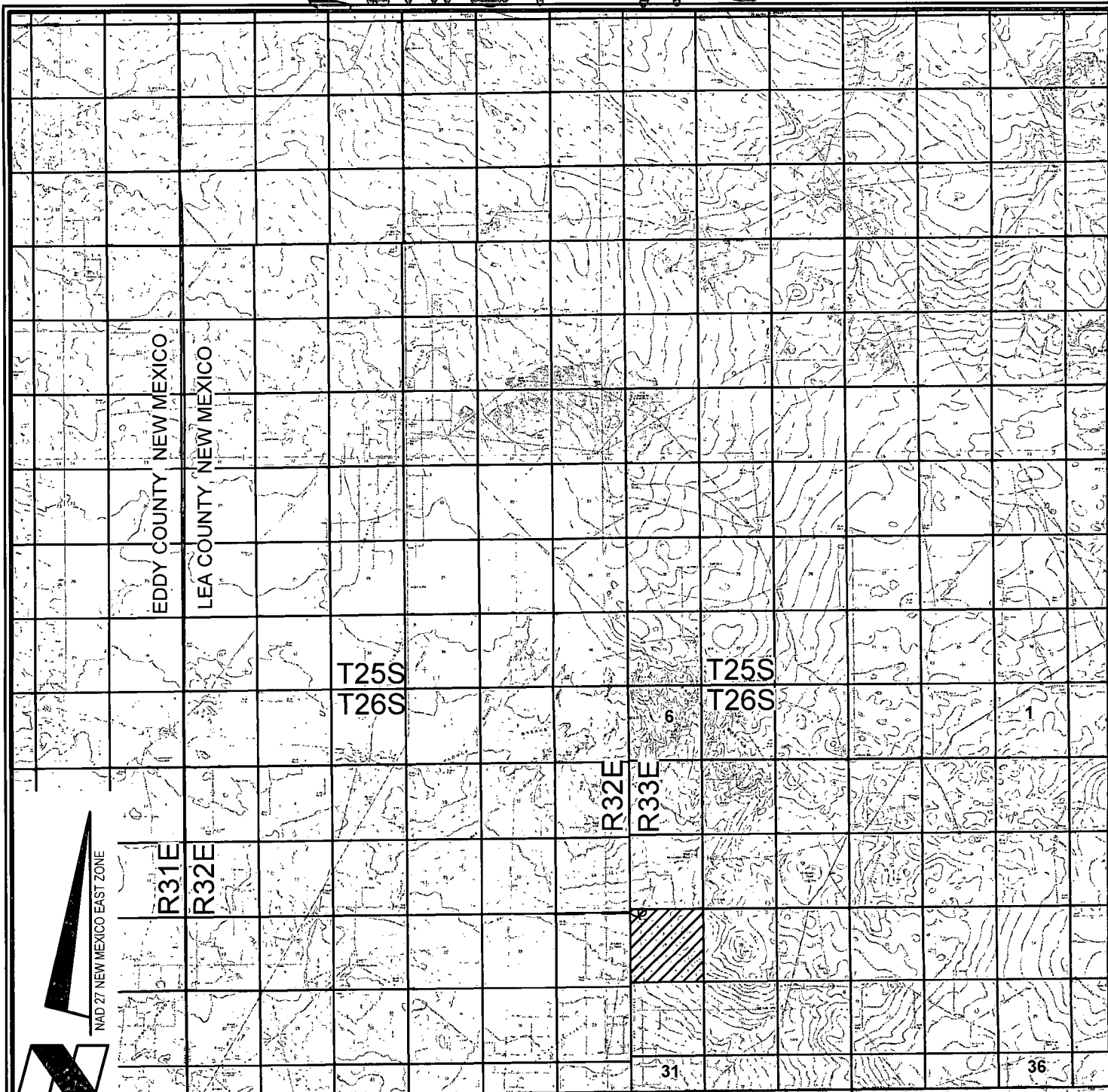
REVISED:

DATE: APRIL 21, 2014

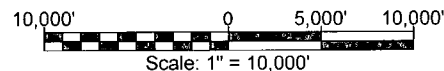
SHEET 1 OF 3 SHEETS

FILENAME: T:\2014\2144669\DWG\Salado Draw 18 26 33 Fed 1H_APD.dwg

Exhibit A-3



VICINITY MAP



CHEVRON U.S.A. INC.
 SALADO DRAW 18 26 33 FED NO. 1H WELL
 LOCATED 200' FNL AND 873' FWL
 SECTION 19, T26S-R33E
 LEA COUNTY, NEW MEXICO



Lafayette New Orleans Houston
 135 Regency Sq. Lafayette, LA 70508
 Ph. 337-237-2200 Fax. 337-232-3299
www.fenstermaker.com

DRAWN BY: BMO

REVISED:

DATE: APRIL 21, 2014

PROJ. MGR.: VHV

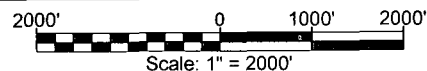
SHEET 2 OF 3 SHEETS




FILENAME: T:\2014\2144669\DWG\Salado Draw 18 26 33 Fed 1H_APD.dwg

Exhibit A-4



VICINITY MAP



-  = FEDERAL LAND
-  = FEE LAND
-  = STATE LAND

CHEVRON U.S.A. INC.

SALADO DRAW 18 26 33 FED NO. 1H WELL
 LOCATED 200' FNL AND 873' FWL
 SECTION 19, T26S-R33E
 LEA COUNTY, NEW MEXICO



Lafayette New Orleans Houston
 135 Regency Sq. Lafayette, LA 70508
 Ph. 337-237-2200 Fax. 337-232-3299
www.fenstermaker.com

DRAWN BY: BMO

PROJ. MGR.: VHV

REVISED:

DATE: APRIL 21, 2014

SHEET 3 OF 3 SHEETS

FILENAME: T:\2014\2144669\DWG\Salado Draw 18 26 33 Fed 1H_APD.dwg

Exhibit B

SALADO DRAW 18-26-33 1H SURFACE AHD BOTTOM HOLE LOCATION TWN 26S RNG 33E SEC 18 & 19 1 MILE RADIUS

