

District I  
1625 N. French Dr., Hobbs, NM 88240  
Phone: (575) 293-6161 Fax: (575) 293-0720  
District II  
311 S. First St., Artesia, NM 88210  
Phone: (575) 748-1283 Fax: (575) 748-9720  
District III  
1000 Rio Brazos Road, Aztec, NM 87410  
Phone: (505) 334-6178 Fax: (505) 334-6170  
District IV  
1220 S. St. Francis Dr., Santa Fe, NM 87505  
Phone: (505) 476-3460 Fax: (505) 476-3462

State of New Mexico  
Energy, Minerals & Natural Resources Department  
OIL CONSERVATION DIVISION  
1220 South St. Francis Dr.  
Santa Fe, NM 87505

HOBBS OGD

Form C-102

Revised August 1, 2011

Submit one copy to appropriate

District Office

RECEIVED

☐ AMENDED REPORT

WELL LOCATION AND ACREAGE DEDICATION PLAT

<sup>1</sup> API Number <b>30-025-42644</b>	<sup>2</sup> Pool Code <b>59900</b>	<sup>3</sup> Pool Name <b>Triple X; Bone Spring</b>
<sup>4</sup> Property Code <b>40329</b>	<sup>5</sup> Property Name <b>SEA SNAKE 35 STATE</b>	<sup>6</sup> Well Number <b>9H</b>
<sup>7</sup> OGRID No. <b>6137</b>	<sup>8</sup> Operator Name <b>DEVON ENERGY PRODUCTION COMPANY, L.P.</b>	<sup>9</sup> Elevation <b>3657.6</b>

<sup>10</sup> Surface Location

UL or lot no.	Section	Township	Range	Lot Idn	Feet from the	North/South line	Feet from the	East/West line	County
<b>M</b>	<b>35</b>	<b>23 S</b>	<b>33 E</b>		<b>185</b>	<b>SOUTH</b>	<b>400</b>	<b>WEST</b>	<b>LEA</b>

<sup>11</sup> Bottom Hole Location If Different From Surface

UL or lot no.	Section	Township	Range	Lot Idn	Feet from the	North/South line	Feet from the	East/West line	County
<b>D</b>	<b>35</b>	<b>23 S</b>	<b>33 E</b>		<b>330</b>	<b>NORTH</b>	<b>350</b>	<b>WEST</b>	<b>LEA</b>

<sup>12</sup> Dedicated Acres <b>160</b>	<sup>13</sup> Joint or Infill	<sup>14</sup> Consolidation Code	<sup>15</sup> Order No.
---	-------------------------------	----------------------------------	-------------------------

No allowable will be assigned to this completion until all interests have been consolidated or a non-standard unit has been approved by the division.

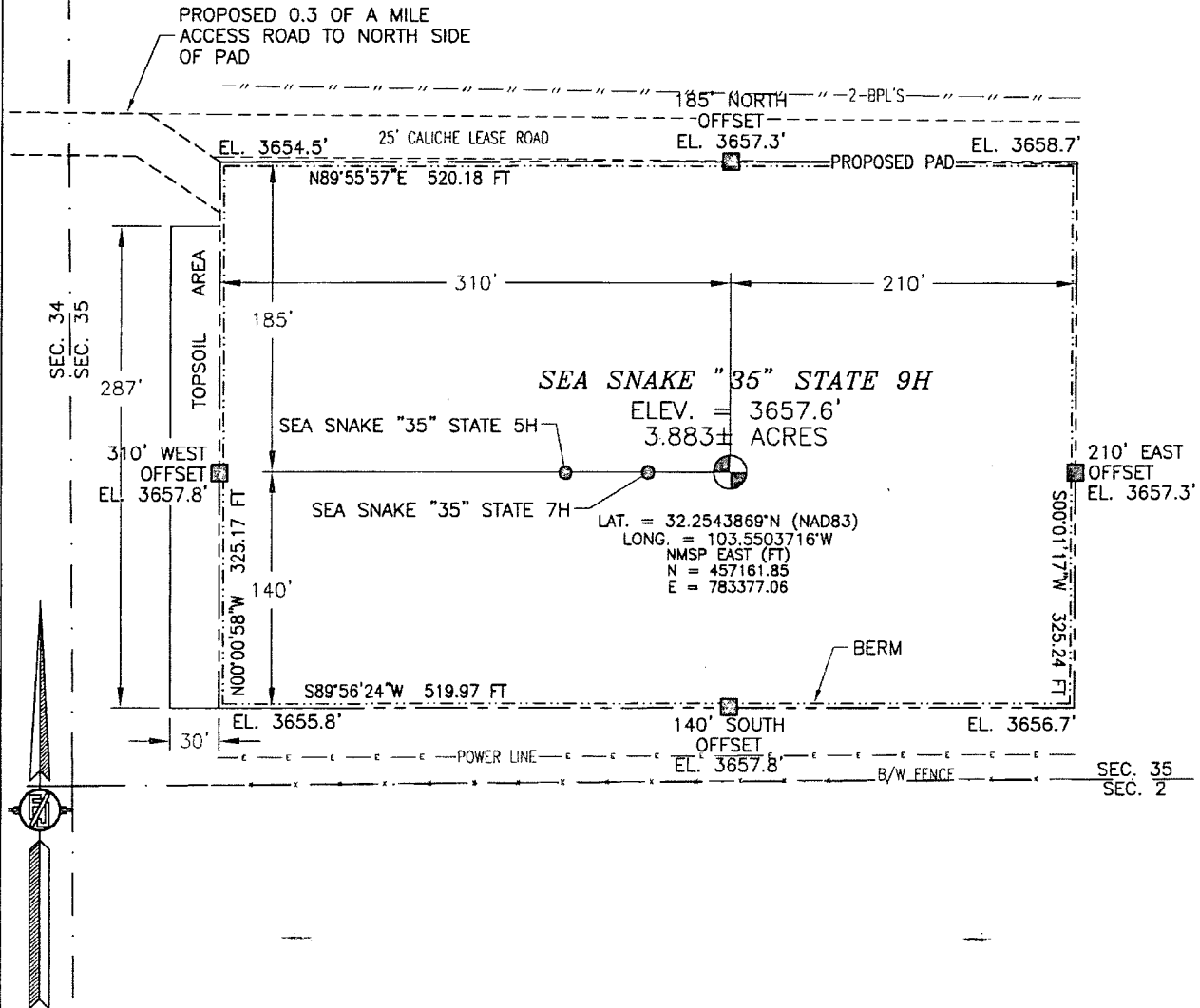
<p>N89°49'05"E 2638.95 FT</p> <p>NW CORNER SEC. 35 LAT. = 32.2684152°N LONG. = 103.5516675°W NMSP EAST (FT) N = 462252.37 E = 782959.28</p> <p>330'</p> <p>BOTTOM OF HOLE</p> <p>BOTTOM OF HOLE LAT. = 32.2675043°N LONG. = 103.5503353°W NMSP EAST (FT) N = 461933.55 E = 783291.66</p> <p>DNF</p> <p>DNF</p> <p>SEA SNAKE "35" STATE 9H ELEV. = 3657.6' LAT. = 32.2543869°N (NAD83) LONG. = 103.5503716°W NMSP EAST (FT) N = 457161.85 E = 783377.06</p> <p>SURFACE LOCATION</p> <p>SW CORNER SEC. 35 LAT. = 32.2538795°N LONG. = 103.5516653°W NMSP EAST (FT) N = 456974.34 E = 782978.47</p> <p>S Q CORNER SEC. 35 LAT. = 32.2538736°N LONG. = 103.5431297°W NMSP EAST (FT) N = 456991.51 E = 785617.22</p> <p>SE CORNER SEC. 35 LAT. = 32.2538616°N LONG. = 103.5345979°W NMSP EAST (FT) N = 457006.6' E = 788254.80</p> <p>185'</p> <p>400'</p> <p>S89°37'38"W 2639.33 FT</p> <p>S89°40'15"W 2638.14 FT</p> <p>S00°25'14"E 2636.82 FT</p> <p>S00°25'14"E 2636.82 FT</p>	<p><b>17 OPERATOR CERTIFICATION</b></p> <p>I hereby certify that the information contained herein is true and complete to the best of my knowledge and belief, and that this organization either owns a working interest or unleased mineral interest in the land including the proposed bottom hole location or has a right to drill this well at this location pursuant to a contract with an owner of such a mineral or working interest, or to a voluntary pooling agreement or a compulsory pooling order heretofore entered by the division.</p> <p><i>Megan Moravec</i> 6/16/2015 Signature Date</p> <p>Megan Moravec, Regulatory Analyst</p> <p>Printed Name</p> <p>Megan.Moravec@dmn.com E-mail Address</p> <p><b>18 SURVEYOR CERTIFICATION</b></p> <p>I hereby certify that the well location shown on this plat was plotted from field notes of actual surveys made by me or under my supervision and that the same is true and correct to the best of my belief.</p> <p>APRIL 20 2015 NEW MEXICO Date of Survey (12797)</p> <p><i>FILIMON F. JARAMILLO</i> Signature and Seal of Professional Surveyor</p> <p>Certificate Number: FILIMON F. JARAMILLO, PLS 12797</p> <p>SURVEY NO. 3817</p>
---	--

JUL 27 2015

SECTION 35, TOWNSHIP 23 SOUTH, RANGE 33 EAST, N.M.P.M.  
LEA COUNTY, STATE OF NEW MEXICO

SITE MAP

NOTE: LATITUDE AND LONGITUDE COORDINATES ARE SHOWN USING THE NORTH AMERICAN DATUM OF 1983 (NAD83). LISTED NEW MEXICO STATE PLANE EAST COORDINATES ARE GRID (NAD83). BASIS OF BEARING AND DISTANCES USED ARE NEW MEXICO STATE PLANE EAST COORDINATES MODIFIED TO THE SURFACE



DEVON ENERGY PRODUCTION COMPANY, L.P.

SEA SNAKE "35" STATE 9H

LOCATED 185 FT. FROM THE SOUTH LINE  
AND 400 FT. FROM THE WEST LINE OF  
SECTION 35, TOWNSHIP 23 SOUTH,  
RANGE 33 EAST, N.M.P.M.  
LEA COUNTY, STATE OF NEW MEXICO

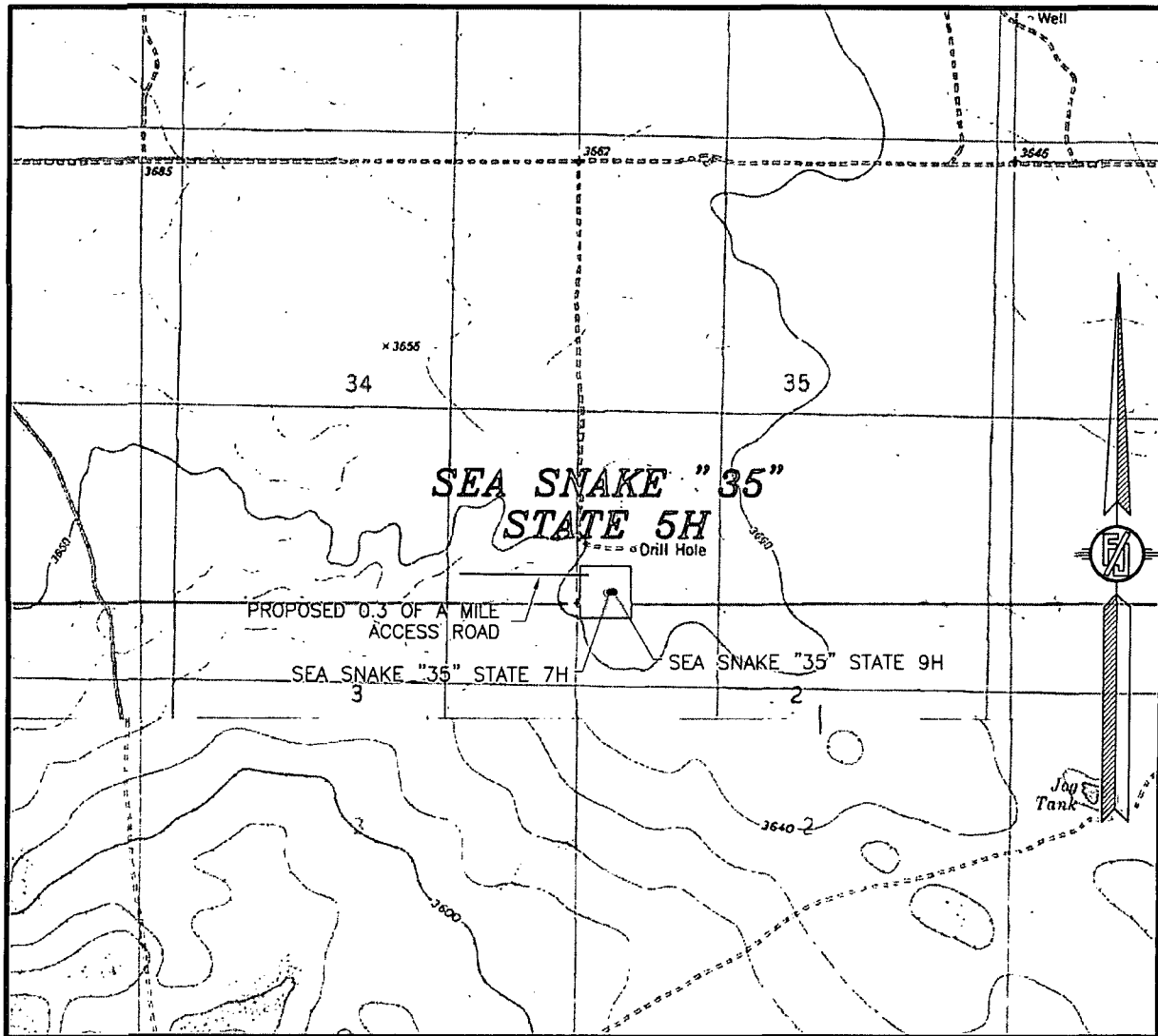
APRIL 20, 2015

SURVEY NO. 3817

MADRON SURVEYING, INC. 301 SOUTH CANAL (575) 234-3341

CARLSBAD, NEW MEXICO

SECTION 35, TOWNSHIP 23 SOUTH, RANGE 33 EAST, N.M.P.M.  
LEA COUNTY, STATE OF NEW MEXICO  
LOCATION VERIFICATION MAP



USGS QUAD MAP:  
TIP TOP WELLS

NOT TO SCALE

DEVON ENERGY PRODUCTION COMPANY, L.P.

**SEA SNAKE "35" STATE 5H**

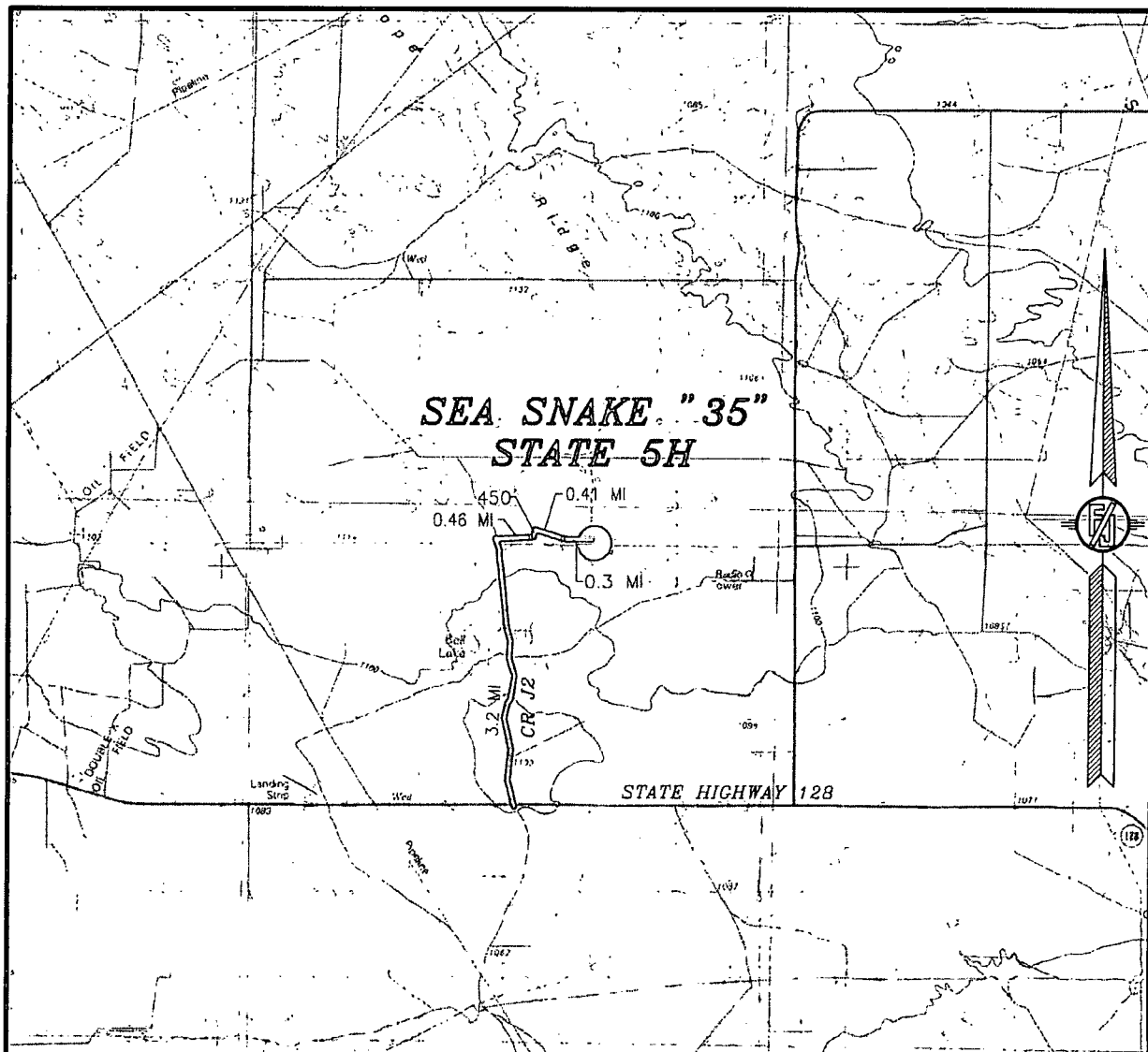
LOCATED 185 FT. FROM THE SOUTH LINE  
AND 300 FT. FROM THE WEST LINE OF  
SECTION 35, TOWNSHIP 23 SOUTH,  
RANGE 33 EAST, N.M.P.M.  
LEA COUNTY, STATE OF NEW MEXICO

APRIL 20, 2015

SURVEY NO. 3813

MADRON SURVEYING, INC. 301 SOUTH CANAL (575) 234-3341 CARLSBAD, NEW MEXICO

SECTION 35, TOWNSHIP 23 SOUTH, RANGE 33 EAST, N.M.P.M.  
LEA COUNTY, STATE OF NEW MEXICO  
VICINITY MAP



DISTANCES IN MILES

NOT TO SCALE

DEVON ENERGY PRODUCTION COMPANY, L.P.

**SEA SNAKE "35" STATE 5H**

LOCATED 185 FT. FROM THE SOUTH LINE  
AND 300 FT. FROM THE WEST LINE OF  
SECTION 35, TOWNSHIP 23 SOUTH,  
RANGE 33 EAST, N.M.P.M.  
LEA COUNTY, STATE OF NEW MEXICO

**DIRECTIONS TO LOCATION**

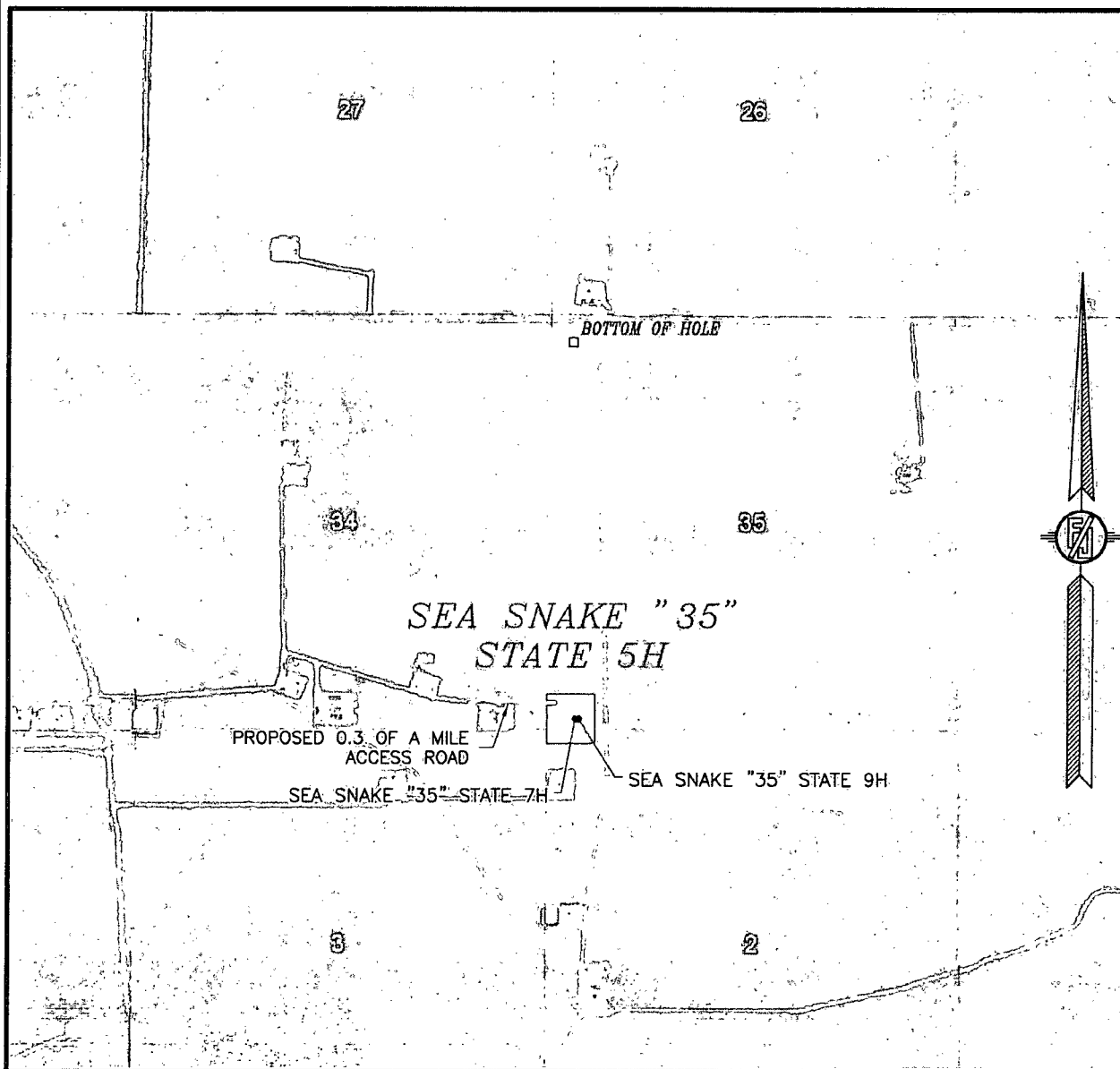
FROM THE INTERSECTION OF STATE HIGHWAY 128 AND CR J2  
(BRINSTOOL ROAD) GO NORTHWEST ON CR J2 APPROX. 3.2 MILES  
TO CALICHE LEASE ROAD ON RIGHT PAST FRAC POND, GO EAST  
(RIGHT) APPROX. 0.46 OF A MILE, TURN NORTH GO APPROX. 450',  
TURN RIGHT GO APPROX. 0.41 OF A MILE TAKE ROAD NORTH SIDE  
OF PAD GO APPROX. 0.3 OF A MILE TO THE NORTHWEST PAD  
CORNER.

APRIL 20, 2015

SURVEY NO. 3813

MADRON SURVEYING, INC. 301 SOUTH CANAL (575) 234-3341 CARLSBAD, NEW MEXICO

SECTION 35, TOWNSHIP 23 SOUTH, RANGE 33 EAST, N.M.P.M.  
LEA COUNTY, STATE OF NEW MEXICO  
AERIAL PHOTO



NOT TO SCALE  
AERIAL PHOTO:  
GOOGLE EARTH  
FEBRUARY 2014

DEVON ENERGY PRODUCTION COMPANY, L.P.

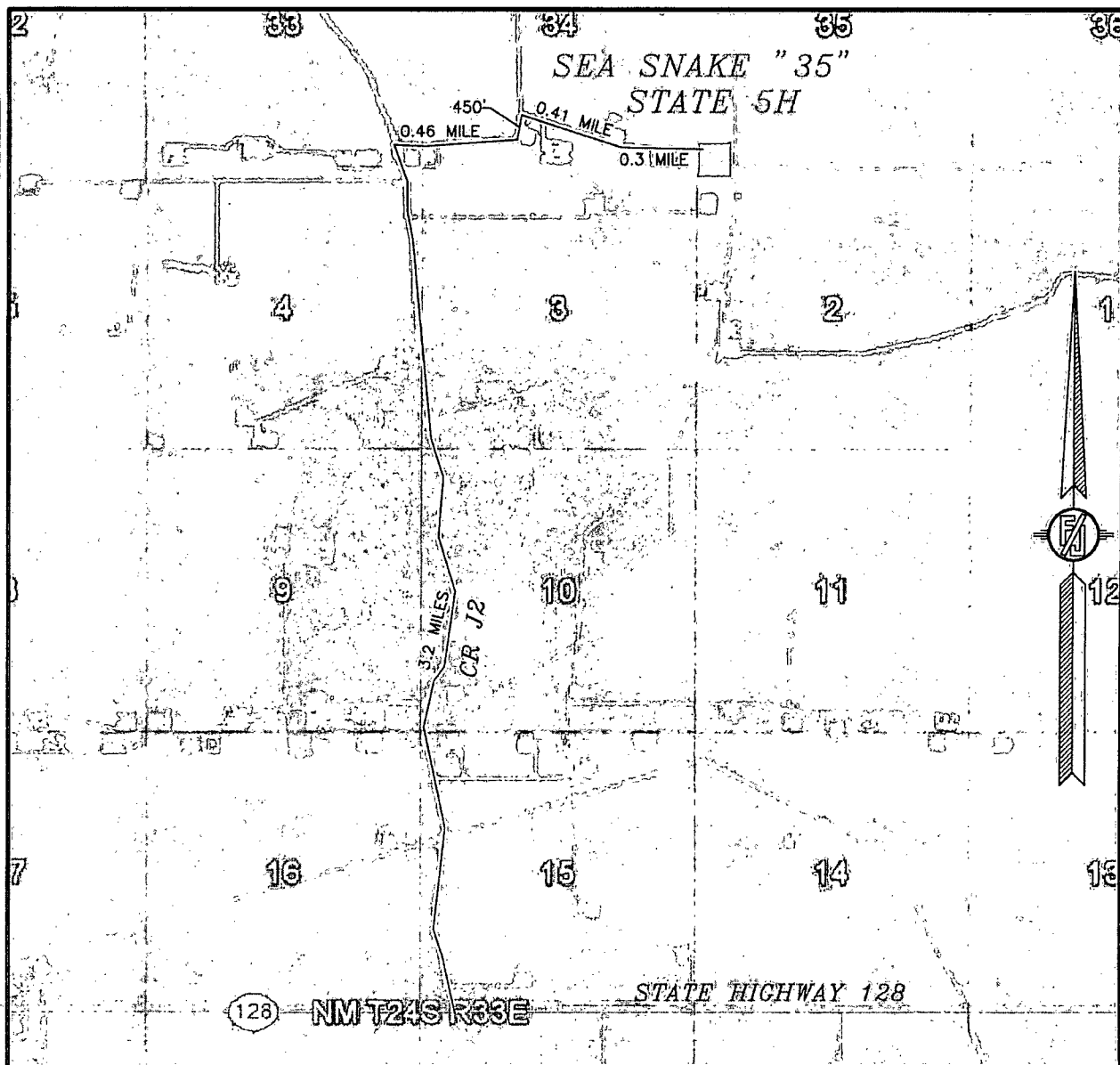
**SEA SNAKE "35" STATE 5H**  
LOCATED 185 FT. FROM THE SOUTH LINE  
AND 300 FT. FROM THE WEST LINE OF  
SECTION 35, TOWNSHIP 23 SOUTH,  
RANGE 33 EAST, N.M.P.M.  
LEA COUNTY, STATE OF NEW MEXICO

APRIL 20, 2015

SURVEY NO. 3813

MADRON SURVEYING, INC. 301 SOUTH CANAL (575) 234-3341 CARLSBAD, NEW MEXICO

SECTION 35, TOWNSHIP 23 SOUTH, RANGE 33 EAST, N.M.P.M.  
LEA COUNTY, STATE OF NEW MEXICO  
ACCESS AERIAL ROUTE MAP



NOT TO SCALE  
AERIAL PHOTO:  
GOOGLE EARTH  
FEBRUARY 2014

DEVON ENERGY PRODUCTION COMPANY, L.P.

**SEA SNAKE "35" STATE 5H**  
LOCATED 185 FT. FROM THE SOUTH LINE  
AND 300 FT. FROM THE WEST LINE OF  
SECTION 35, TOWNSHIP 23 SOUTH,  
RANGE 33 EAST, N.M.P.M.  
LEA COUNTY, STATE OF NEW MEXICO

APRIL 20, 2015

SURVEY NO. 3813

MADRON SURVEYING, INC. 301 SOUTH CANAL (575) 234-3341 CARLSBAD, NEW MEXICO