

DISTRICT I
1625 N. French Dr., Hobbs, NM 88240
DISTRICT II
1301 W. Grand Avenue, Artesia, NM 88210
DISTRICT III
1000 Rio Brazos Rd., Aztec, NM 87410
DISTRICT IV
1220 S. St. Francis Dr., Santa Fe, NM 87505

State of New Mexico
Energy, Minerals and Natural Resources Department

Form C-102
Revised October 15, 2009

Submit one copy to appropriate
District Office

OIL CONSERVATION DIVISION
1220 South St. Francis Dr.
Santa Fe, New Mexico 87505

WELL LOCATION AND ACREAGE DEDICATION PLAT

☐ AMENDED REPORT

API Number 30-025-42705	Pool Code 97838	Pool Name JENNINGS UPPER BONESPRING SHALE
Property Code 39542	Property Name RED HILLS WEST Unit	Well Number #009H
OGRID No. 14744	Operator Name MEWBOURNE OIL COMPANY	Elevation 3199'

Surface Location

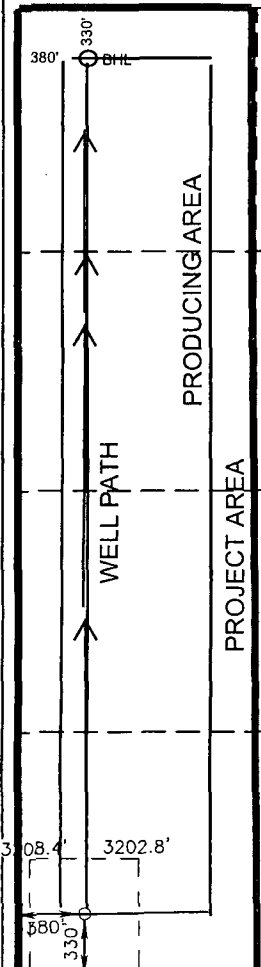
RECEIVED

UL or lot No.	Section	Township	Range	Lot Idn	Feet from the	North/South line	Feet from the	East/West line	County
M	8	26 S	32 E		330	SOUTH	380	WEST	LEA

Bottom Hole Location If Different From Surface

UL or lot No.	Section	Township	Range	Lot Idn	Feet from the	North/South line	Feet from the	East/West line	County
D	8	26 S	32 E		330'	NORTH	380	WEST	LEA
Dedicated Acres 160	Joint or Infill	Consolidation Code	Order No.						

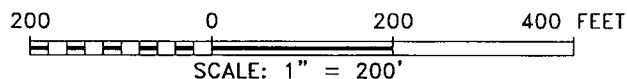
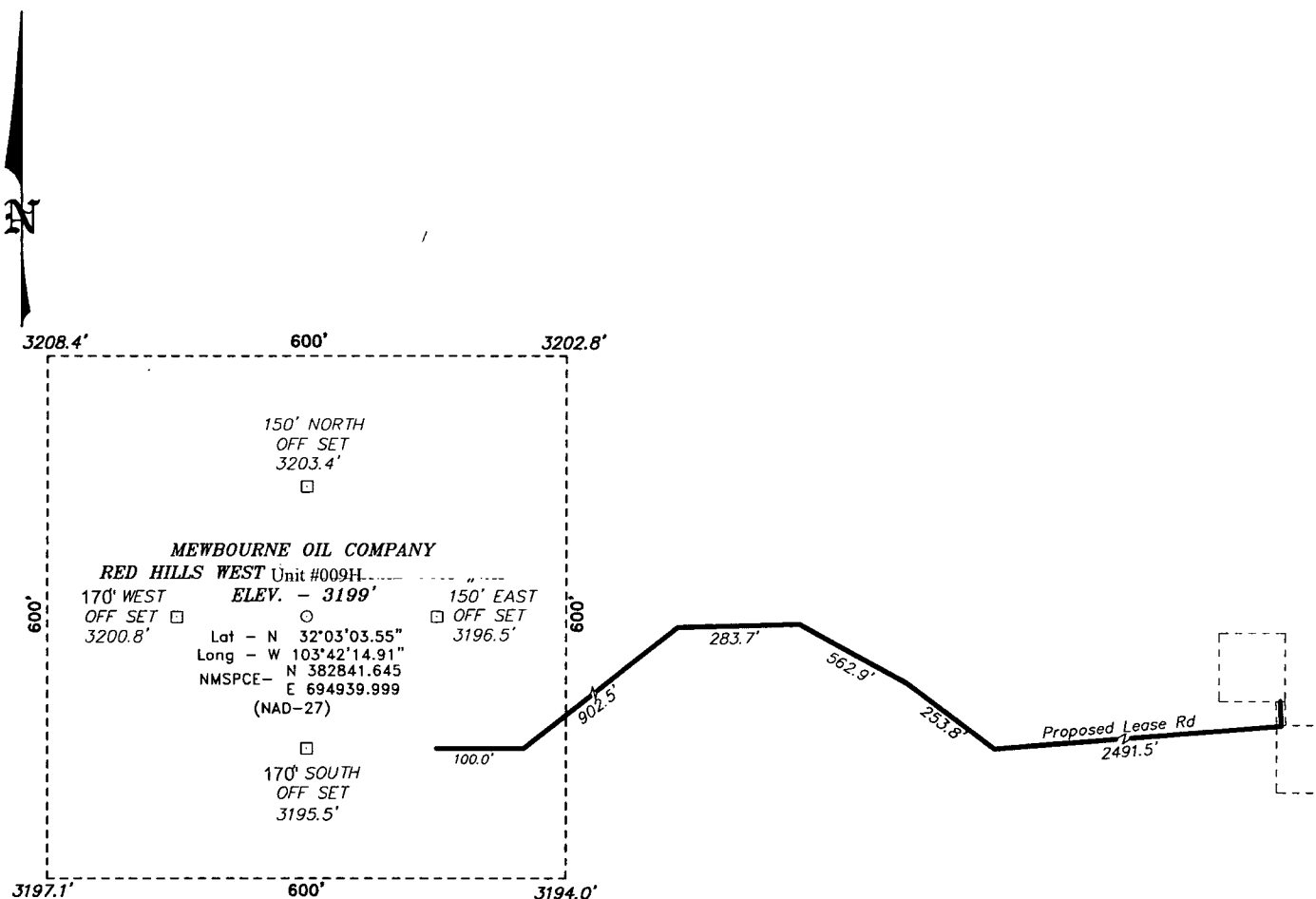
NO ALLOWABLE WILL BE ASSIGNED TO THIS COMPLETION UNTIL ALL INTERESTS HAVE BEEN CONSOLIDATED
OR A NON-STANDARD UNIT HAS BEEN APPROVED BY THE DIVISION

 <p>SURFACE LOCATION Lat - N 32°03'03.55" Long - W 103°42'14.91" NMSPCE - N 382841.645 E 694939.999 (NAD-27)</p>	<p>OPERATOR CERTIFICATION</p> <p>I hereby certify that the information contained herein is true and complete to the best of my knowledge and belief, and that this organization either owns a working interest or unleased mineral interest in the land including the proposed bottom hole location or has a right to drill this well at this location pursuant to a contract with an owner of such a mineral or working interest, or to a voluntary pooling agreement or a compulsory pooling order heretofore entered by the division.</p> <p>Signature <i>B. D. J.</i> Date <i>12-5-14</i></p> <p>BRADLEY BISHOP Printed Name</p> <p>SURVEYOR CERTIFICATION</p> <p>I hereby certify that the well location shown on this plat was plotted from field notes of actual surveys made by me or under my supervision, and that the same is true and correct to the best of my belief.</p> <p>Date Surveyed <i>OCTOBER 1, 2014</i> Signature & Seal of Professional Surveyor <i>Gary L. Jones</i> Certificate No. <i>23549</i> Basin Surveys</p>
--	---

JUL 28 2015

Exhibit "3"

SECTION 8, TOWNSHIP 26 SOUTH, RANGE 32 EAST, N.M.P.M.,
LEA COUNTY, NEW MEXICO.



Directions to Location:

FROM THE JUNCTION OF BATTLE AXE AND ORLA, GO
NORTHERLY ON ORLA FOR 3.8 MILES TO LEASE
ROAD, ON LEASE ROAD GO WEST 1.7 MILES TO
LEASE ROAD, ON LEASE ROAD GO SOUTH 0.6 MILES
TO PROPOSED LEASE ROAD.

BASIN SURVEYS P.O. BOX 1786 - HOBBS, NEW MEXICO

W.O. Number: 23512 Drawn By: J. SMALL

Date: 10-21-2010 Disk: JMS 23512

MEWBOURNE OIL COMPANY

REF: RED HILLS WEST Unit #009H / WELL PAD TOPO

THE RED HILLS WEST Unit #009H LOCATED 330'

FROM THE SOUTH LINE AND 380' FROM THE WEST LINE OF

SECTION 8, TOWNSHIP 26 SOUTH, RANGE 32 EAST,

N.M.P.M., LEA COUNTY, NEW MEXICO.

Survey Date: 10-12-2010 Sheet 1 of 1 Sheets

Topographic map of the Red Hills area. The map shows contour lines and various landmarks. Key features include:

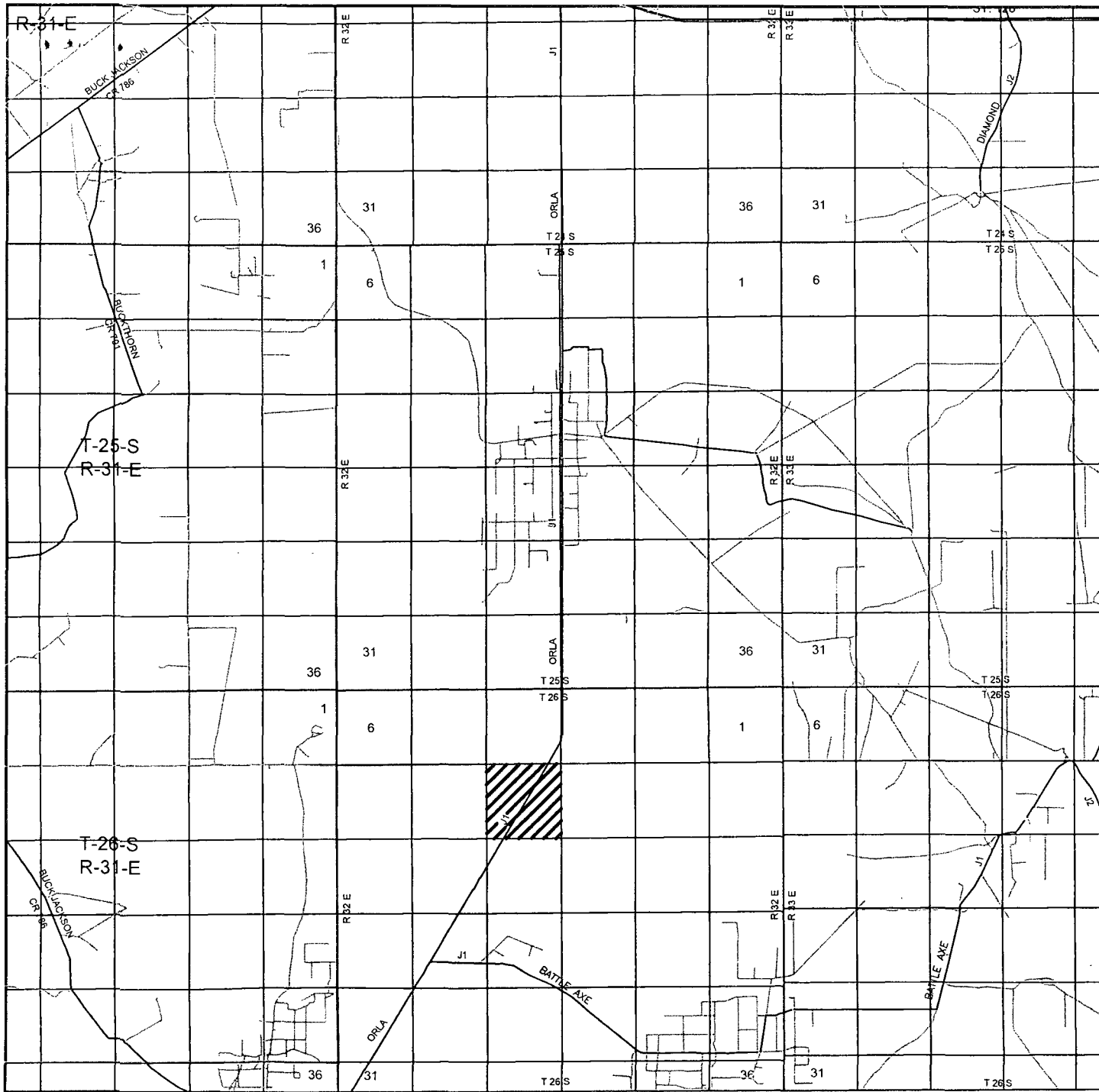
- RED HILLS** (shaded area)
- WEST Unit #009H** (shaded area)
- FEDERAL** (shaded area)
- COM** (shaded area)
- Drill Hole** (multiple locations)
- Gravel Pits** (multiple locations)
- Oil Well** (one location)
- BM 3266** (benchmark)
- BM 3249** (benchmark)
- BM 3245** (benchmark)
- BM 3214** (benchmark)
- BM 3167** (benchmark)
- BM 3149** (benchmark)
- BM 3197** (benchmark)
- BM 3194** (benchmark)
- BM 3160** (benchmark)
- BM 3150** (benchmark)
- BM 3140** (benchmark)
- BM 3130** (benchmark)
- BM 3120** (benchmark)
- BM 3110** (benchmark)
- BM 3100** (benchmark)
- BM 3090** (benchmark)
- BM 3080** (benchmark)
- BM 3070** (benchmark)
- BM 3060** (benchmark)
- BM 3050** (benchmark)
- BM 3040** (benchmark)
- BM 3030** (benchmark)
- BM 3020** (benchmark)
- BM 3010** (benchmark)
- BM 3000** (benchmark)
- BM 2990** (benchmark)
- BM 2980** (benchmark)
- BM 2970** (benchmark)
- BM 2960** (benchmark)
- BM 2950** (benchmark)
- BM 2940** (benchmark)
- BM 2930** (benchmark)
- BM 2920** (benchmark)
- BM 2910** (benchmark)
- BM 2900** (benchmark)
- BM 2890** (benchmark)
- BM 2880** (benchmark)
- BM 2870** (benchmark)
- BM 2860** (benchmark)
- BM 2850** (benchmark)
- BM 2840** (benchmark)
- BM 2830** (benchmark)
- BM 2820** (benchmark)
- BM 2810** (benchmark)
- BM 2800** (benchmark)
- BM 2790** (benchmark)
- BM 2780** (benchmark)
- BM 2770** (benchmark)
- BM 2760** (benchmark)
- BM 2750** (benchmark)
- BM 2740** (benchmark)
- BM 2730** (benchmark)
- BM 2720** (benchmark)
- BM 2710** (benchmark)
- BM 2700** (benchmark)
- BM 2690** (benchmark)
- BM 2680** (benchmark)
- BM 2670** (benchmark)
- BM 2660** (benchmark)
- BM 2650** (benchmark)
- BM 2640** (benchmark)
- BM 2630** (benchmark)
- BM 2620** (benchmark)
- BM 2610** (benchmark)
- BM 2600** (benchmark)
- BM 2590** (benchmark)
- BM 2580** (benchmark)
- BM 2570** (benchmark)
- BM 2560** (benchmark)
- BM 2550** (benchmark)
- BM 2540** (benchmark)
- BM 2530** (benchmark)
- BM 2520** (benchmark)
- BM 2510** (benchmark)
- BM 2500** (benchmark)
- BM 2490** (benchmark)
- BM 2480** (benchmark)
- BM 2470** (benchmark)
- BM 2460** (benchmark)
- BM 2450** (benchmark)
- BM 2440** (benchmark)
- BM 2430** (benchmark)
- BM 2420** (benchmark)
- BM 2410** (benchmark)
- BM 2400** (benchmark)
- BM 2390** (benchmark)
- BM 2380** (benchmark)
- BM 2370** (benchmark)
- BM 2360** (benchmark)
- BM 2350** (benchmark)
- BM 2340** (benchmark)
- BM 2330** (benchmark)
- BM 2320** (benchmark)
- BM 2310** (benchmark)
- BM 2300** (benchmark)
- BM 2290** (benchmark)
- BM 2280** (benchmark)
- BM 2270** (benchmark)
- BM 2260** (benchmark)
- BM 2250** (benchmark)
- BM 2240** (benchmark)
- BM 2230** (benchmark)
- BM 2220** (benchmark)
- BM 2210** (benchmark)
- BM 2200** (benchmark)
- BM 2190** (benchmark)
- BM 2180** (benchmark)
- BM 2170** (benchmark)
- BM 2160** (benchmark)
- BM 2150** (benchmark)
- BM 2140** (benchmark)
- BM 2130** (benchmark)
- BM 2120** (benchmark)
- BM 2110** (benchmark)
- BM 2100** (benchmark)
- BM 2090** (benchmark)
- BM 2080** (benchmark)
- BM 2070** (benchmark)
- BM 2060** (benchmark)
- BM 2050** (benchmark)
- BM 2040** (benchmark)
- BM 2030** (benchmark)
- BM 2020** (benchmark)
- BM 2010** (benchmark)
- BM 2000** (benchmark)
- BM 1990** (benchmark)
- BM 1980** (benchmark)
- BM 1970** (benchmark)
- BM 1960** (benchmark)
- BM 1950** (benchmark)
- BM 1940** (benchmark)
- BM 1930** (benchmark)
- BM 1920** (benchmark)
- BM 1910** (benchmark)
- BM 1900** (benchmark)
- BM 1890** (benchmark)
- BM 1880** (benchmark)
- BM 1870** (benchmark)
- BM 1860** (benchmark)
- BM 1850** (benchmark)
- BM 1840** (benchmark)
- BM 1830** (benchmark)
- BM 1820** (benchmark)
- BM 1810** (benchmark)
- BM 1800** (benchmark)
- BM 1790** (benchmark)
- BM 1780** (benchmark)
- BM 1770** (benchmark)
- BM 1760** (benchmark)
- BM 1750** (benchmark)
- BM 1740** (benchmark)
- BM 1730** (benchmark)
- BM 1720** (benchmark)
- BM 1710** (benchmark)
- BM 1700** (benchmark)
- BM 1690** (benchmark)
- BM 1680** (benchmark)
- BM 1670** (benchmark)
- BM 1660** (benchmark)
- BM 1650** (benchmark)
- BM 1640** (benchmark)
- BM 1630** (benchmark)
- BM 1620** (benchmark)
- BM 1610** (benchmark)
- BM 1600** (benchmark)
- BM 1590** (benchmark)
- BM 1580** (benchmark)
- BM 1570** (benchmark)
- BM 1560** (benchmark)
- BM 1550** (benchmark)
- BM 1540** (benchmark)
- BM 1530** (benchmark)
- BM 1520** (benchmark)
- BM 1510** (benchmark)
- BM 1500** (benchmark)
- BM 1490** (benchmark)
- BM 1480** (benchmark)
- BM 1470** (benchmark)
- BM 1460** (benchmark)
- BM 1450** (benchmark)
- BM 1440** (benchmark)
- BM 1430** (benchmark)
- BM 1420** (benchmark)
- BM 1410** (benchmark)
- BM 1400** (benchmark)
- BM 1390** (benchmark)
- BM 1380** (benchmark)
- BM 1370** (benchmark)
- BM 1360** (benchmark)
- BM 1350** (benchmark)
- BM 1340** (benchmark)
- BM 1330** (benchmark)
- BM 1320** (benchmark)
- BM 1310** (benchmark)
- BM 1300** (benchmark)
- BM 1290** (benchmark)
- BM 1280** (benchmark)
- BM 1270** (benchmark)
- BM 1260** (benchmark)
- BM 1250** (benchmark)
- BM 1240** (benchmark)
- BM 1230** (benchmark)
- BM 1220** (benchmark)</

**basin
surveys**
focused on excellence
in the oilfield

Date: 10-21-2010

MEWBOURNE
OIL COMPANY

Exhibit "3B"



RED HILLS WEST Unit #009H

Located 330' FSL and 380' FWL

Section 8, Township 26 South, Range 32 East,
N.M.P.M., Lea County, New Mexico.

basin
surveys
focused on excellence
in the oilfield

P.O. Box 1786
1120 N. West County Rd.
Hobbs, New Mexico 88241
(575) 393-7316 - Office
(575) 392-2206 - Fax
basinsurveys.com

W.O. Number: JMS 23512

Survey Date: 10-12-2010

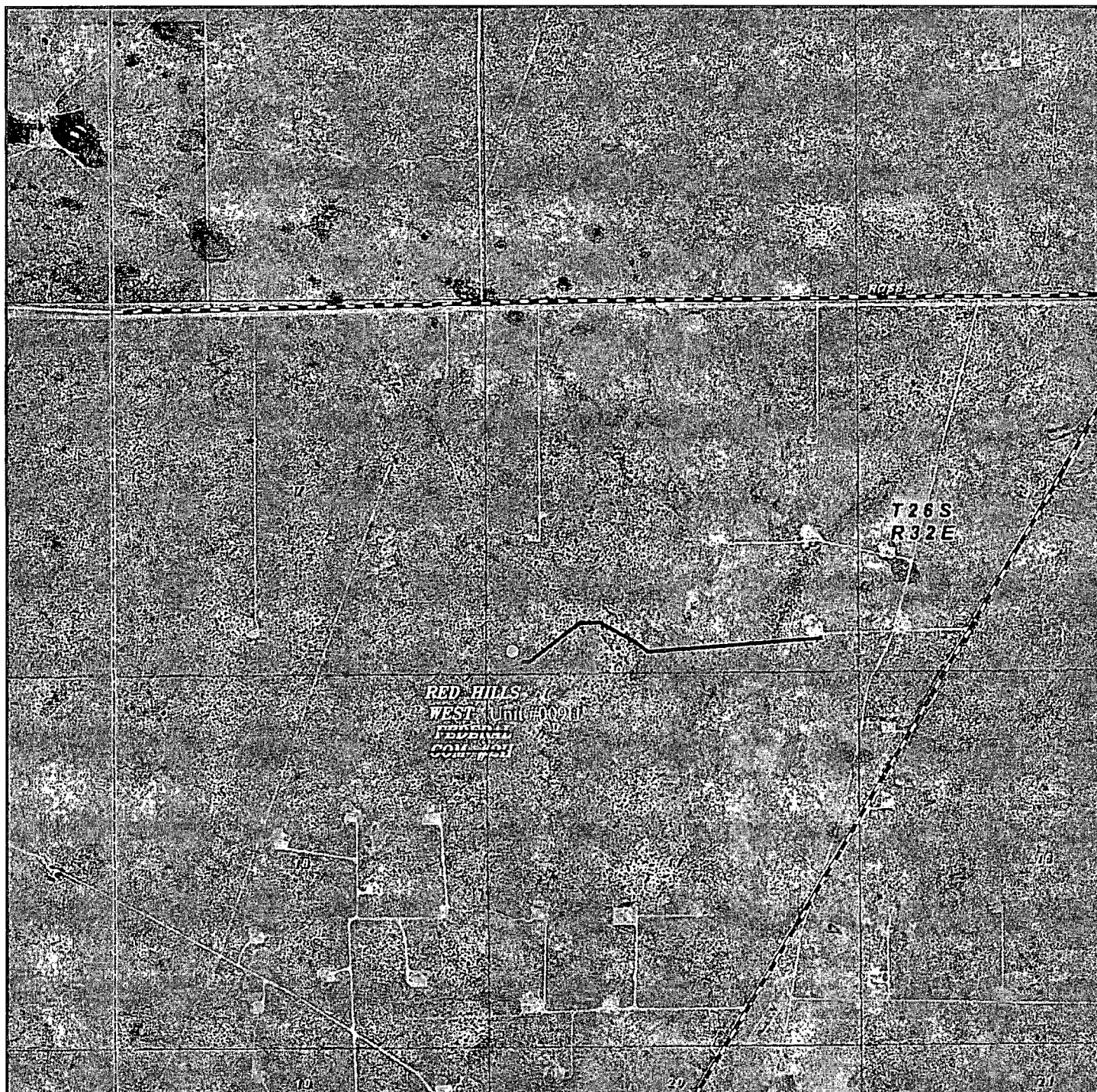
Scale: 1" = 2 Miles

Date: 10-21-2010



MEWBOURNE
OIL COMPANY

Exhibit "3C"



RED HILLS WEST Unit #009H
Located 330' FSL and 380' FWL
Section 8, Township 26 South, Range 32 East,
N.M.P.M., Lea County, New Mexico.

basin
surveys

focused on excellence
in the oilfield

P.O. Box 1786
1120 N. West County Rd.
Hobbs, New Mexico 88241
(575) 393-7316 - Office
(575) 392-2206 - Fax
basinsurveys.com

W.O. Number: JMS 23512

Scale: 1" = 2000'

YELLOW TINT - USA LAND
BLUE TINT - STATE LAND
NATURAL COLOR - FEE LAND

MEWBOURNE
OIL COMPANY

Exhibit "3D": Existing Road

Imagery Date: 4/7/2013 32°02'59.02" N 103°41'37.68" W elev 3189 ft eye alt 9873 ft

Exhibit 3D-2: New Road

SESE

SWSW

RAWUOLCH

RAWUOLCH

Exhibit "3E": Gas Pipeline

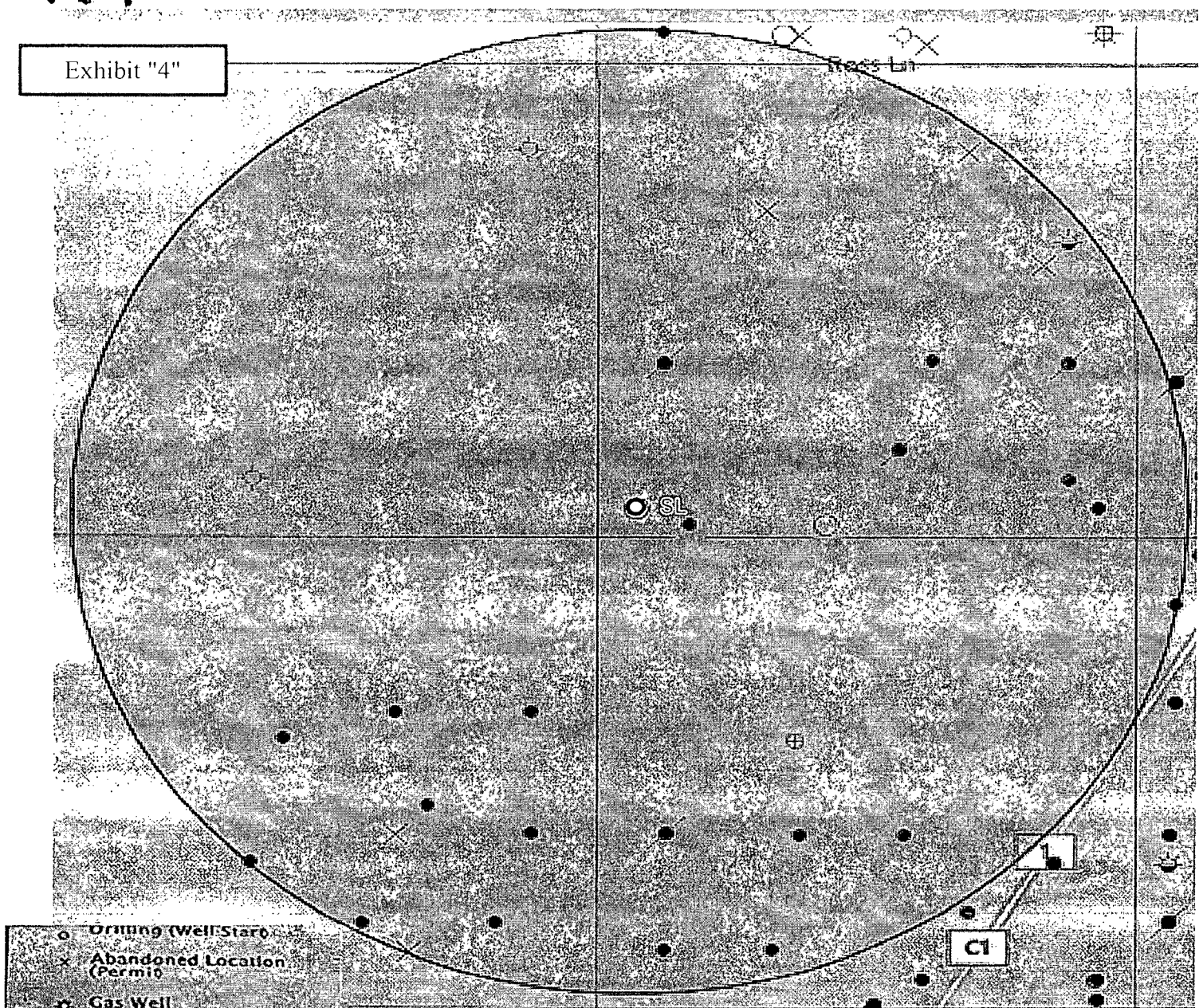
© 2014 Google

Google earth

Earth Point

Imagery Date: 4/7/2013 32°03'02.96" N, 103°41'48.33" W, elev 3190 ft eye alt 8400 ft

Exhibit "4"



- Drilling (Well Start)
- × Abandoned Location (Permit)
- ☆ Gas Well
- Oil Well
- ✱ Oil and Gas Well
- Other (Observation, etc)
- ⊕ Injection Well
- ◇ Suspended
- ✱ Plugged Gas Well
- ✱ Plugged Oil Well
- ✱ Plugged Oil and Gas
- ◇ Dry Hole (No Shows)
- ☆ Dry Hole w/Gas Show
- ◇ Dry Hole w/Oil Show
- ☆ Dry Hole w/Oil and Gas Show

Surface Location
Red Hills West Unit #009H
Sec 8 T26S R32E