

District I  
 1625 N. French Dr., Hobbs, NM 88240  
 Phone: (505) 292-8161 Fax: (505) 292-8726  
 District II  
 311 S. First St., Artesia, NM 88210  
 Phone: (505) 748-1262 Fax: (505) 748-9726  
 District III  
 1900 Rio Brazos Road, Aztec, NM 87419  
 Phone: (505) 334-6178 Fax: (505) 334-6179  
 District IV  
 1220 S. St. Francis Dr., Santa Fe, NM 87505  
 Phone: (505) 176-3460 Fax: (505) 476-3462

State of New Mexico  
 Energy, Minerals & Natural Resources Department  
**OIL CONSERVATION DIVISION**  
 1220 South St. Francis Dr.  
 Santa Fe, NM 87505

Form C-102  
 Revised August 1, 2011  
 Submit one copy to appropriate  
 District Office  
☐ AMENDED REPORT

HOBBSOCD

AUG 03 2015

RECEIVED

WELL LOCATION AND ACREAGE DEDICATION PLAT

API Number <b>30-025-43725</b>	Pool Code <b>97663</b>	Pool Name <b>Rock Lake; Delaware</b>
Property Code <b>315076</b>	Property Name <b>ROCK LAKE 5-6 FED COM</b>	Well Number <b>1H</b>
OGRID No. <b>6137</b>	Operator Name <b>DEVON ENERGY PRODUCTION COMPANY, L.P.</b>	Elevation <b>3463.1</b>

" Surface Location

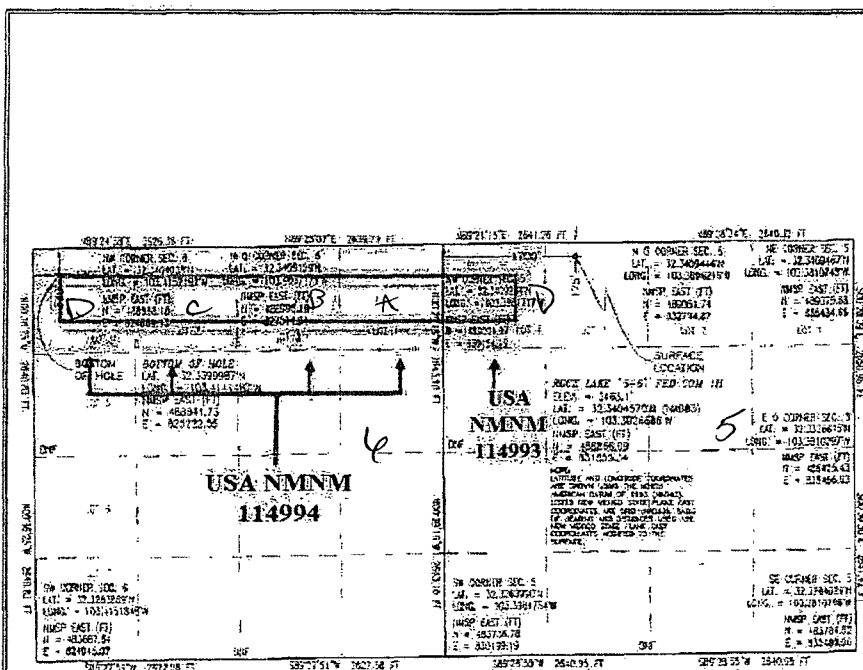
UL or lot no.	Section	Township	Range	Lot Idn	Feet from the	North/South line	Feet from the	East/West line	County
3	5	23 S	35 E		175	NORTH	1700	WEST	LEA

" Bottom Hole Location If Different From Surface

UL or lot no.	Section	Township	Range	Lot Idn	Feet from the	North/South line	Feet from the	East/West line	County
4	6	23 S	35 E		330	NORTH	330	WEST	LEA

Dedicated Acres	Joint or Infill	Consolidation Code	Order No.
<b>200.25</b>			

No allowable will be assigned to this completion until all interests have been consolidated or a non-standard unit has been approved by the division.



" OPERATOR CERTIFICATION

I hereby certify that the information contained herein is true and accurate to the best of my knowledge and belief, and that this organization either owns or has an interest in the well shown on this plat, including the proposed bottom hole location, or has a right to drill this well at this location pursuant to a mineral right or interest in such oil and gas property, or is a voluntary pooling agreement or a compulsory pooling order heretofore entered by the division.

Signature: *Linda Good* Date: **3/16/2015**

Printed Name: **Linda Good**  
 Email Address: **linda.good@dvn.com**

" SURVEYOR CERTIFICATION

I hereby certify that the well location shown on this plat was plotted from field notes of actual surveys made by me or under my supervision, and that the same is true and correct to the best of my belief.

Date of Survey: **FEBRUARY 13, 2015**

Signature and Seal of Professional Surveyor:

Certificate Number: **REMON E JARAMILLO, PLS 12797**  
 SURVEY NO. **3541A**

□ — Project Area  
 ■ — Producing Area

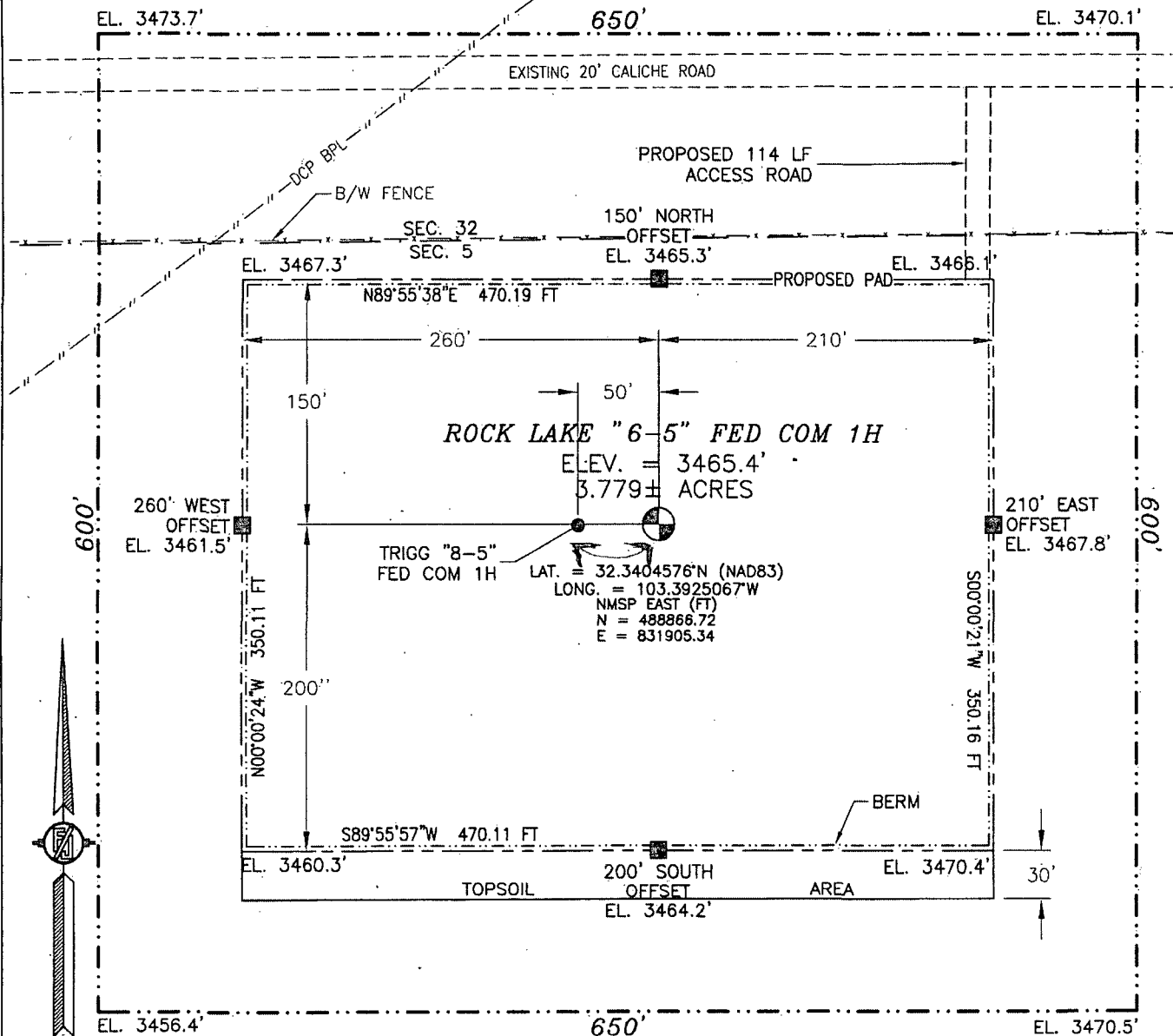
AUG 04 2015

PM

SECTION 5, TOWNSHIP 23 SOUTH, RANGE 35 EAST, N.M.P.M.  
LEA COUNTY, STATE OF NEW MEXICO

SITE MAP

NOTE: LATITUDE AND LONGITUDE COORDINATES ARE SHOWN USING THE NORTH AMERICAN DATUM OF 1983 (NAD83). LISTED NEW MEXICO STATE PLANE EAST COORDINATES ARE GRID (NAD83). BASIS OF BEARING AND DISTANCES USED ARE NEW MEXICO STATE PLANE EAST COORDINATES MODIFIED TO THE SURFACE



010 50 100 200

SCALE 1" = 100'

DIRECTIONS TO LOCATION

FROM THE INTERSECTION OF STATE HIGHWAY 128 AND CR 21 (DELAWARE BASIN ROAD) GO NORTH THEN EAST ON CR 21 APPROX. 16.6 MILES TO A LEASE ROAD ON LEFT (NORTHWEST). TURN WEST ON LEASE ROAD AND CATTLE GUARD, FOLLOW LEASE ROAD ALONG FENCE LINE (WEST) GO APPROX. 1.6 MILES TO ROAD LATH ON LEFT (SOUTH). TURN SOUTH GO APPROX. 1.14' TO THE NORTHEAST PAD CORNER FOR THIS LOCATION.

DEVON ENERGY PRODUCTION COMPANY, L.P.

ROCK LAKE "6-5" FED COM 1H

LOCATED 175 FT. FROM THE NORTH LINE  
AND 1750 FT. FROM THE WEST LINE OF

SECTION 5, TOWNSHIP 23 SOUTH,

RANGE 35 EAST, N.M.P.M.

LEA COUNTY, STATE OF NEW MEXICO

FEBRUARY 13, 2015

SURVEY NO. 3541A

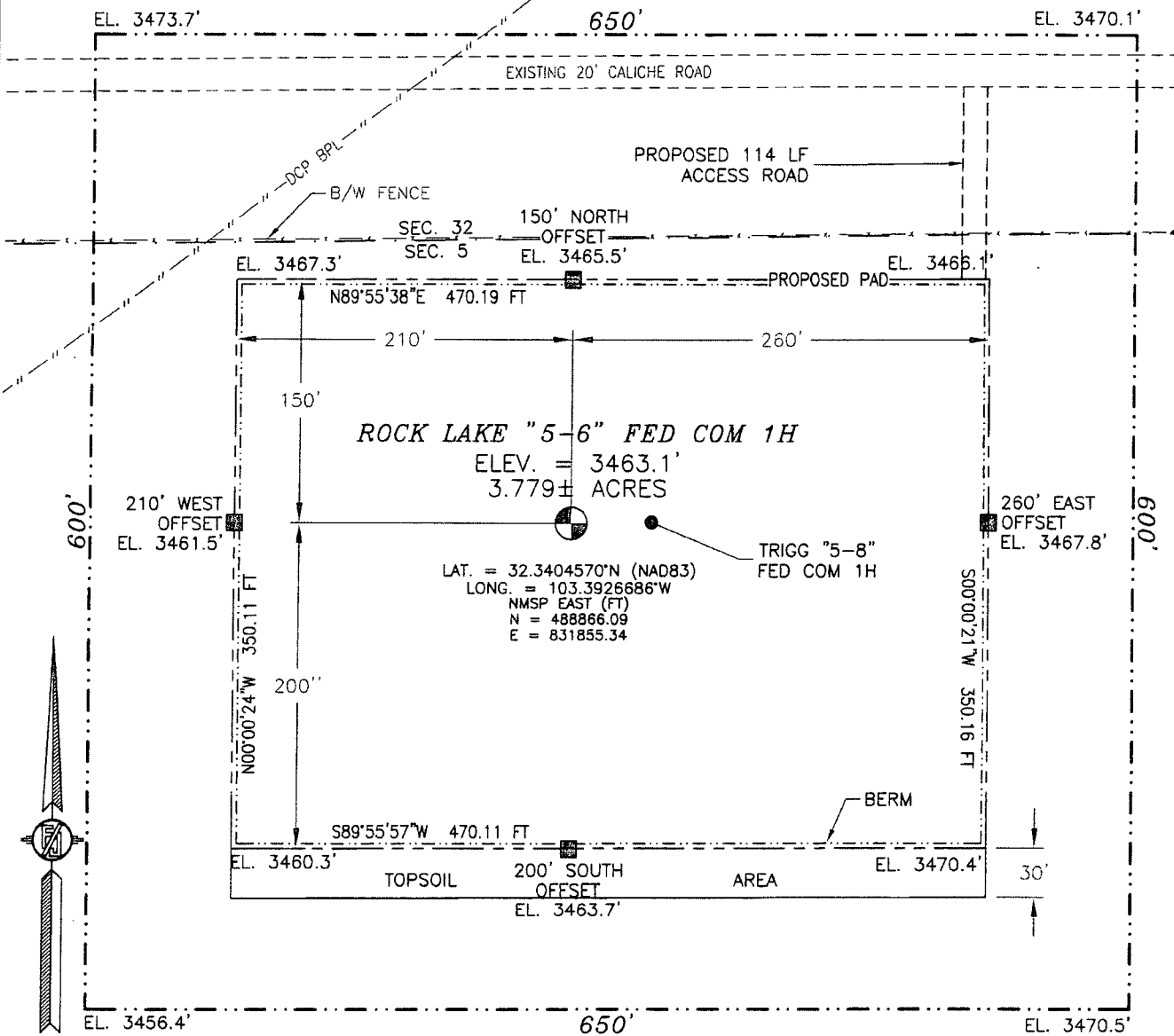
MADRON SURVEYING, INC.

301 SOUTH CANAL  
(575) 234-3341

CARLSBAD, NEW MEXICO

SECTION 5, TOWNSHIP 23 SOUTH, RANGE 35 EAST, N.M.P.M.  
LEA COUNTY, STATE OF NEW MEXICO  
**SITE MAP**

NOTE: LATITUDE AND LONGITUDE COORDINATES ARE SHOWN USING THE NORTH AMERICAN DATUM OF 1983 (NAD83). LISTED NEW MEXICO STATE PLANE EAST COORDINATES ARE GRID (NAD83). BASIS OF BEARING AND DISTANCES USED ARE NEW MEXICO STATE PLANE EAST COORDINATES MODIFIED TO THE SURFACE



010 50 100 200

SCALE 1" = 100'

**DIRECTIONS TO LOCATION**

FROM THE INTERSECTION OF STATE HIGHWAY 128 AND CR 21 (DELAWARE BASIN ROAD) GO NORTH THEN EAST ON CR 21 APPROX. 16.6 MILES TO A LEASE ROAD ON LEFT (NORTHWEST). TURN WEST ON LEASE ROAD AND CATTLE GUARD, FOLLOW LEASE ROAD ALONG FENCE LINE (WEST) GO APPROX. 1.6 MILES TO ROAD LATH ON LEFT (SOUTH). TURN SOUTH GO APPROX. 114' TO THE NORTHEAST PAD CORNER FOR THIS LOCATION.

DEVON ENERGY PRODUCTION COMPANY, L.P.

**ROCK LAKE "5-6" FED COM 1H**

LOCATED 175 FT. FROM THE NORTH LINE  
AND 1700 FT. FROM THE WEST LINE OF  
SECTION 5, TOWNSHIP 23 SOUTH,  
RANGE 35 EAST, N.M.P.M.

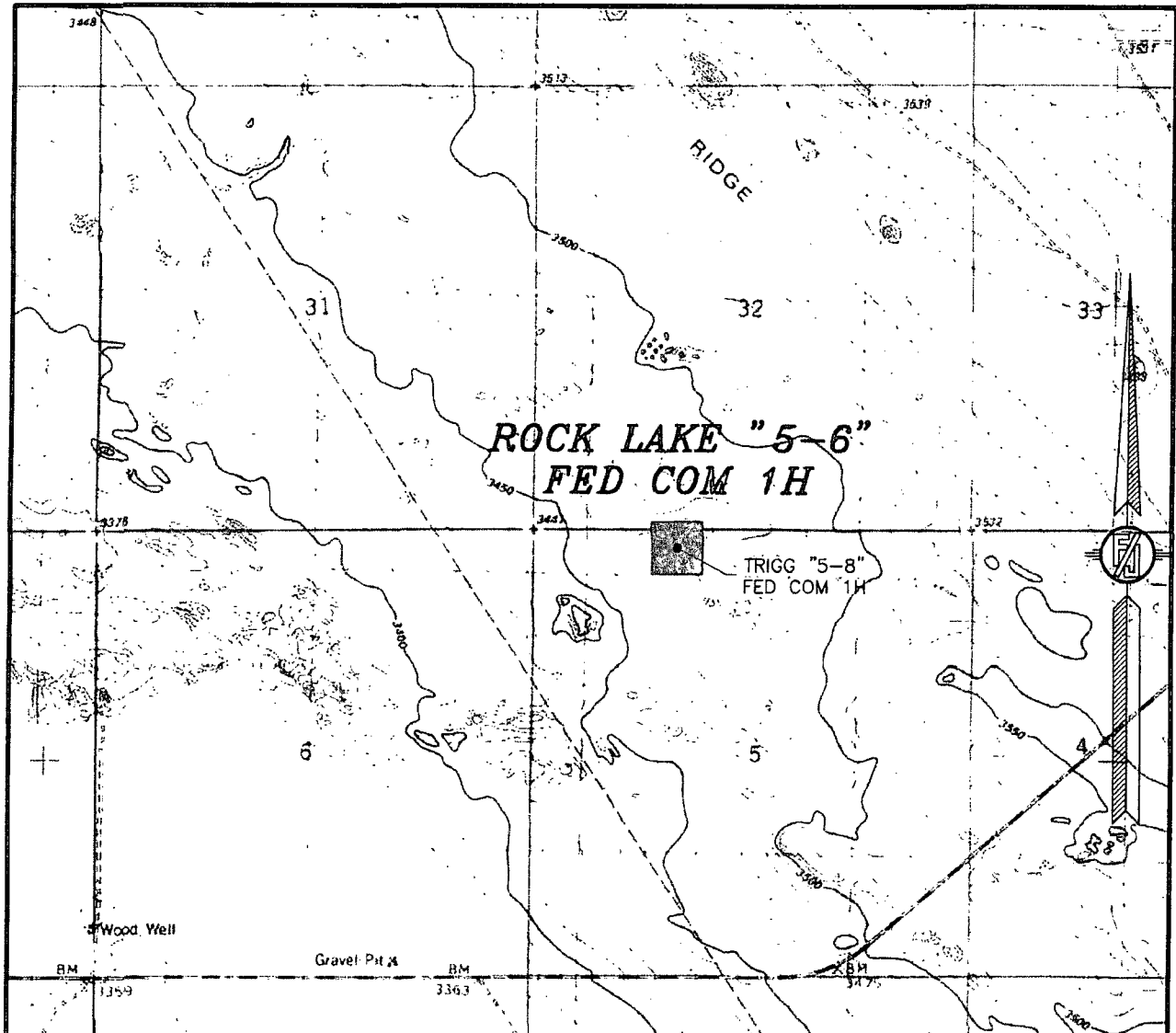
LEA COUNTY, STATE OF NEW MEXICO

FEBRUARY 13, 2015

SURVEY NO. 3541A

MADRON SURVEYING, INC. 301 SOUTH CANAL (575) 234-3341 CARLSBAD, NEW MEXICO

SECTION 5, TOWNSHIP 23 SOUTH, RANGE 35 EAST, N.M.P.M.  
LEA COUNTY, STATE OF NEW MEXICO  
LOCATION VERIFICATION MAP



USGS QUAD MAP:  
SAN SIMON SINK

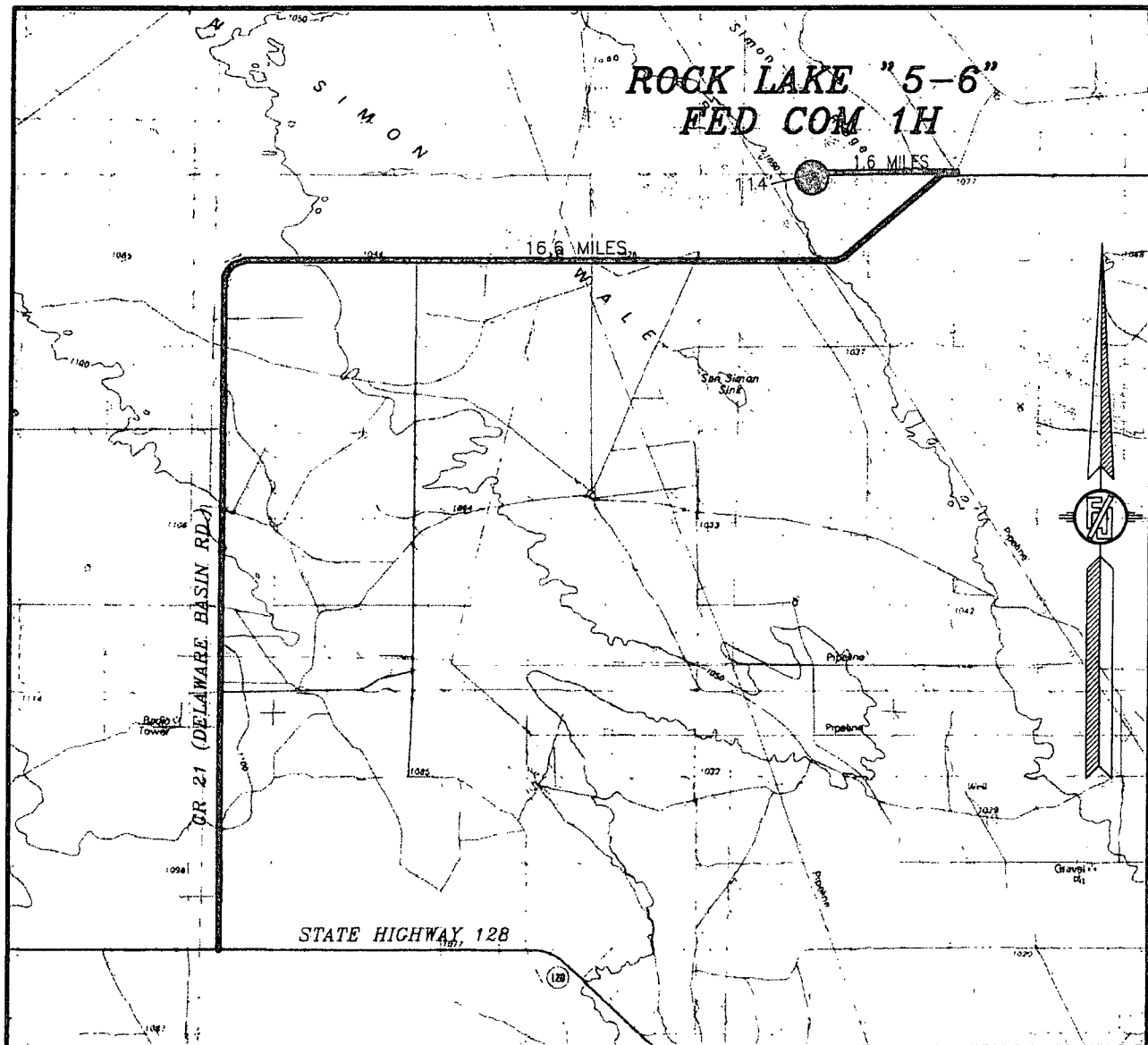
NOT TO SCALE

DEVON ENERGY PRODUCTION COMPANY, L.P.  
**ROCK LAKE "5-6" FED COM 1H**  
LOCATED 175 FT. FROM THE NORTH LINE  
AND 1700 FT. FROM THE WEST LINE OF  
SECTION 5, TOWNSHIP 23 SOUTH,  
RANGE 35 EAST, N.M.P.M.  
LEA COUNTY, STATE OF NEW MEXICO

FEBRUARY 13, 2015

MADRON SURVEYING, INC. 301 SOUTH CANAL (575) 234-3341 CARLSBAD, NEW MEXICO SURVEY NO. 3541A

SECTION 5, TOWNSHIP 23 SOUTH, RANGE 35 EAST, N.M.P.M.  
LEA COUNTY, STATE OF NEW MEXICO  
VICINITY MAP



DISTANCES IN MILES

NOT TO SCALE

DEVON ENERGY PRODUCTION COMPANY, L.P.

**ROCK LAKE "5-6" FED COM 1H**

LOCATED 175 FT. FROM THE NORTH LINE  
AND 1700 FT. FROM THE WEST LINE OF

SECTION 5, TOWNSHIP 23 SOUTH,  
RANGE 35 EAST, N.M.P.M.

LEA COUNTY, STATE OF NEW MEXICO

**DIRECTIONS TO LOCATION**

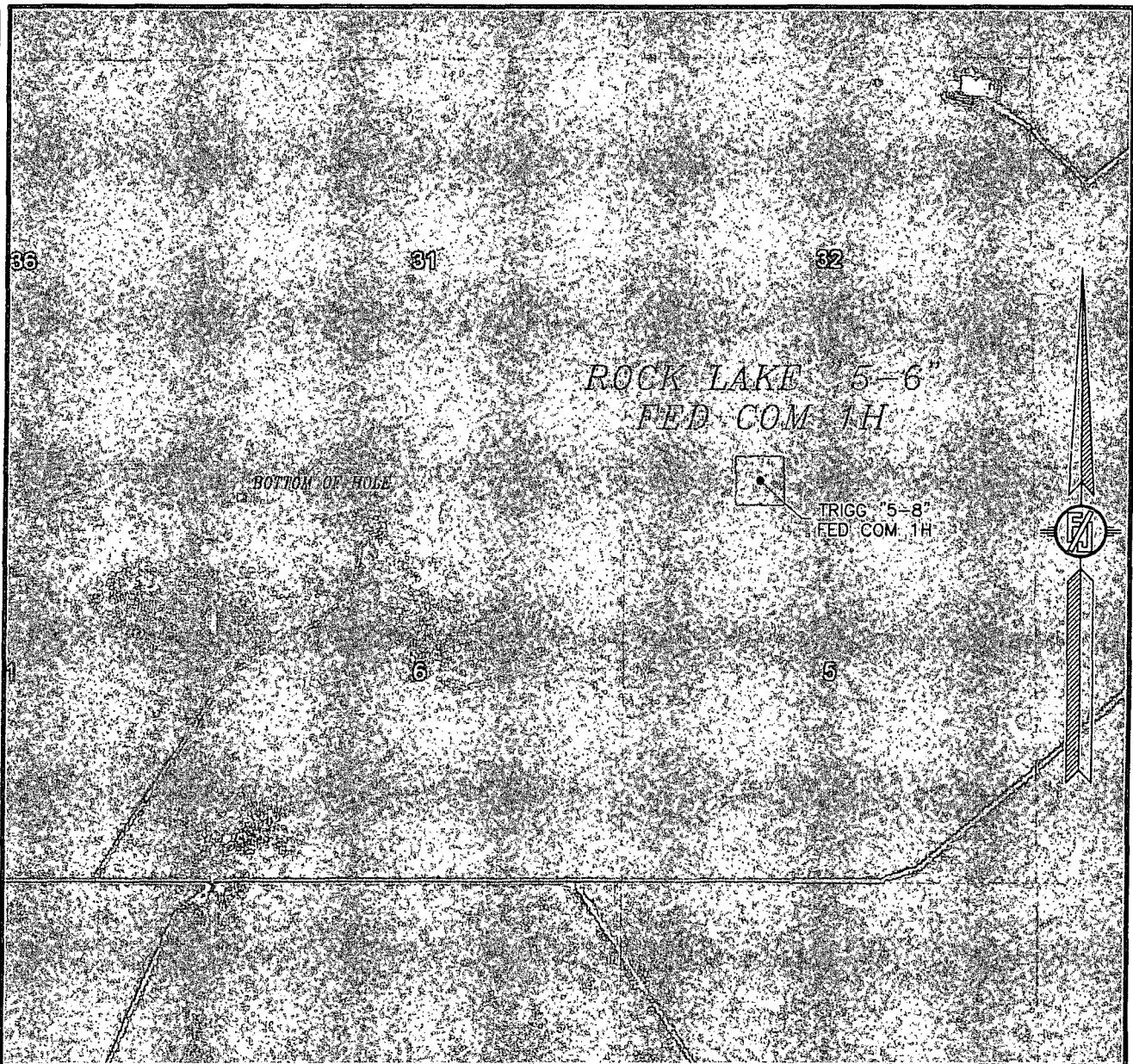
FROM THE INTERSECTION OF STATE HIGHWAY 128 AND CR 21  
(DELAWARE BASIN ROAD) GO NORTH THEN EAST ON CR 21 APPROX.  
16.6 MILES TO A LEASE ROAD ON LEFT (NORTHWEST). TURN WEST  
ON LEASE ROAD AND CATTLE GUARD, FOLLOW LEASE ROAD ALONG  
FENCE LINE (WEST) GO APPROX. 1.6 MILES TO ROAD LATH ON LEFT  
(SOUTH). TURN SOUTH GO APPROX. 114' TO THE NORTHEAST PAD  
CORNER FOR THIS LOCATION.

FEBRUARY 13, 2015

SURVEY NO. 3541A

MADRON SURVEYING, INC. 301 SOUTH CANAL (575) 234-3341 CARLSBAD, NEW MEXICO

SECTION 5, TOWNSHIP 23 SOUTH, RANGE 35 EAST, N.M.P.M.  
LEA COUNTY, STATE OF NEW MEXICO  
AERIAL PHOTO



NOT TO SCALE  
AERIAL PHOTO:  
GOOGLE EARTH  
FEBRUARY 2014

DEVON ENERGY PRODUCTION COMPANY, L.P.

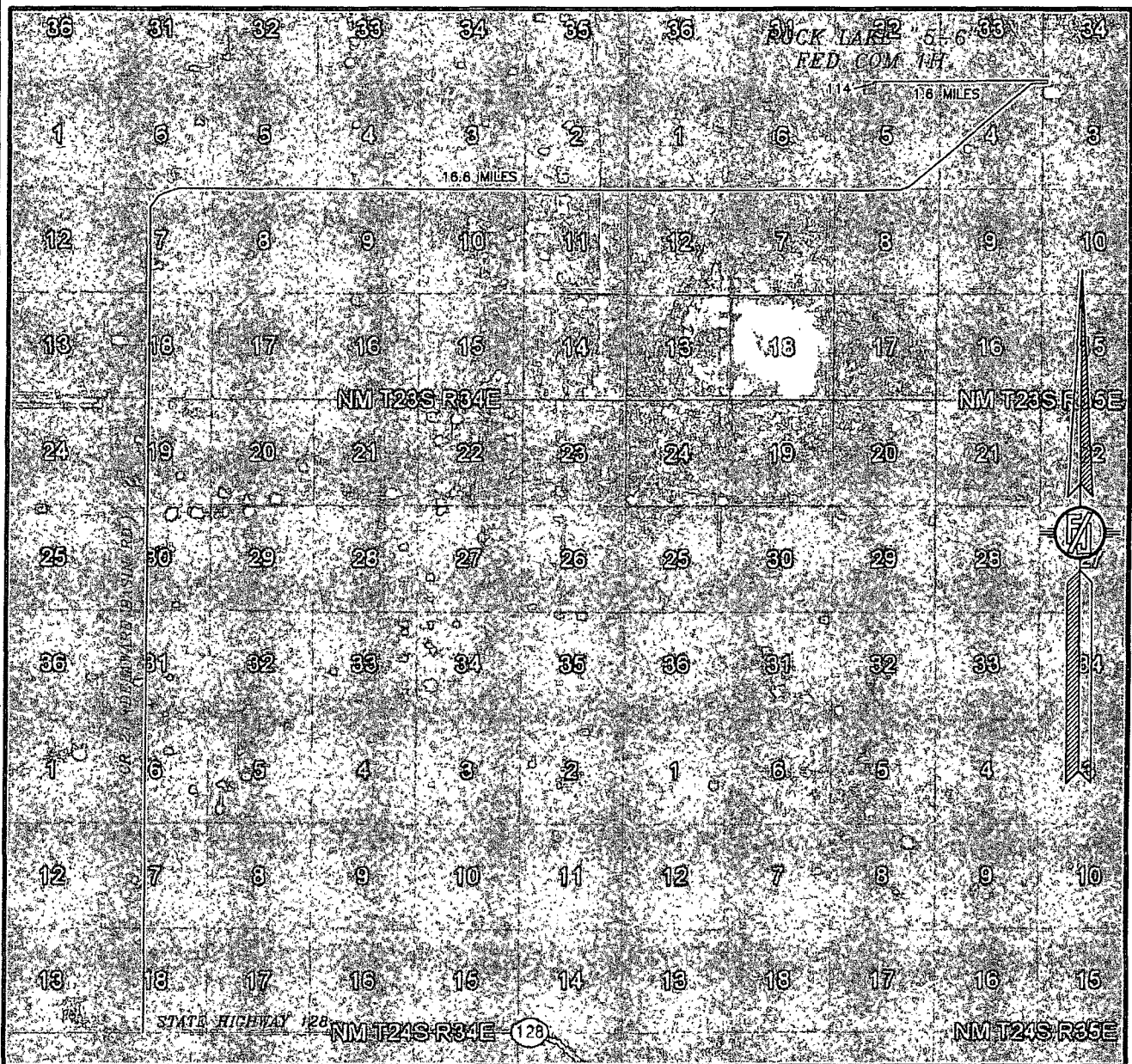
**ROCK LAKE "5-6" FED COM 1H**  
LOCATED 175 FT. FROM THE NORTH LINE  
AND 1700 FT. FROM THE WEST LINE OF  
SECTION 5, TOWNSHIP 23 SOUTH,  
RANGE 35 EAST, N.M.P.M.  
LEA COUNTY, STATE OF NEW MEXICO

FEBRUARY 13, 2015

SURVEY NO. 3541A

MADRON SURVEYING, INC. 301 SOUTH CANAL (575) 234-3341 CARLSBAD, NEW MEXICO

SECTION 5, TOWNSHIP 23 SOUTH, RANGE 35 EAST, N.M.P.M.  
LEA COUNTY, STATE OF NEW MEXICO  
ACCESS AERIAL ROUTE MAP



NOT TO SCALE  
AERIAL PHOTO:  
GOOGLE EARTH  
FEBRUARY 2014

DEVON ENERGY PRODUCTION COMPANY, L.P.

**ROCK LAKE "5-6" FED COM 1H**

LOCATED 175 FT. FROM THE NORTH LINE  
AND 1700 FT. FROM THE WEST LINE OF  
SECTION 5, TOWNSHIP 23 SOUTH,  
RANGE 35 EAST, N.M.P.M.  
LEA COUNTY, STATE OF NEW MEXICO

FEBRUARY 13, 2015

SURVEY NO. 3541A

MADRON SURVEYING, INC. 301 SOUTH CANAL (575) 234-3341 CARLSBAD, NEW MEXICO

