

AUG 21 2015

District I
1635 N. French Dr., Hobbs, NM 88240
Phone: (505) 393-6161 Fax: (505) 393-6720

District II
511 S. First St., Artesia, NM 88210
Phone: (505) 748-1283 Fax: (505) 748-9720

District III
1000 Rio Brazos Road, Aztec, NM 87410
Phone: (505) 334-6178 Fax: (505) 334-6170

District IV
1220 S. St. Francis Dr., Santa Fe, NM 87515
Phone: (505) 476-3460 Fax: (505) 476-3462

State of New Mexico
Energy, Minerals & Natural Resources Department

OIL CONSERVATION DIVISION

1220 South St. Francis Dr.

Santa Fe, NM 87505

Form C-102

Revised August 1, 2011

RECEIVED Submit one copy to appropriate
District Office

☐ AMENDED REPORT

WELL LOCATION AND ACREAGE DEDICATION PLAT

¹ API Number 30-025-42749	² Pool Code 97663	³ Pool Name Rock Lake; Delaware
⁴ Property Code 315166	⁵ Property Name TRIGG 5/8 FED COM	⁶ Well Number 1H
⁷ OGRID No. 6137	⁸ Operator Name DEVON ENERGY PRODUCTION COMPANY, L.P.	⁹ Elevation 3465.4

¹⁰ Surface Location

UL or lot no.	Section	Township	Range	Lot Idn	Feet from the	North/South line	Feet from the	East/West line	County
3	5	23 S	35 E		175	NORTH	1750	WEST	LEA

¹¹ Bottom Hole Location If Different From Surface

UL or lot no.	Section	Township	Range	Lot Idn	Feet from the	North/South line	Feet from the	East/West line	County
N	8	23 S	35 E		300	SOUTH	1980	WEST	LEA

¹² Dedicated Acres	¹³ Joint or Infill	¹⁴ Consolidation Code	¹⁵ Order No.
320.27			

No allowable will be assigned to this completion until all interests have been consolidated or a non-standard unit has been approved by the division.

	<p>¹⁷ OPERATOR CERTIFICATION</p> <p>I hereby certify that the information contained herein is true and complete to the best of my knowledge and belief, and that this organization either owns a working interest or indirect mineral interest in the land including the proposed bottom hole location or has a right to drill this well at this location pursuant to a contract with an owner of such a mineral or working interest, or to a voluntary pooling agreement or a compulsory pooling order heretofore entered by the division.</p> <p>Signature: <u>Linda Good</u> Date: <u>3/16/2015</u></p> <p>Printed Name: <u>Linda Good</u></p> <p>E-mail Address: <u>linda.good@dev.com</u></p>
	<p>¹⁸ SURVEYOR CERTIFICATION</p> <p>I hereby certify that the well location shown on this plat was plotted from field notes attached to this plat made by me or under my supervision, and that the same is true and correct to the best of my belief.</p> <p>Signature and Seal: <u>[Signature]</u></p> <p>Certificate Number: <u>PLA 14993 F. JARAMILLO, PLS 12797</u></p> <p>SURVEY NO. <u>3587A</u></p>

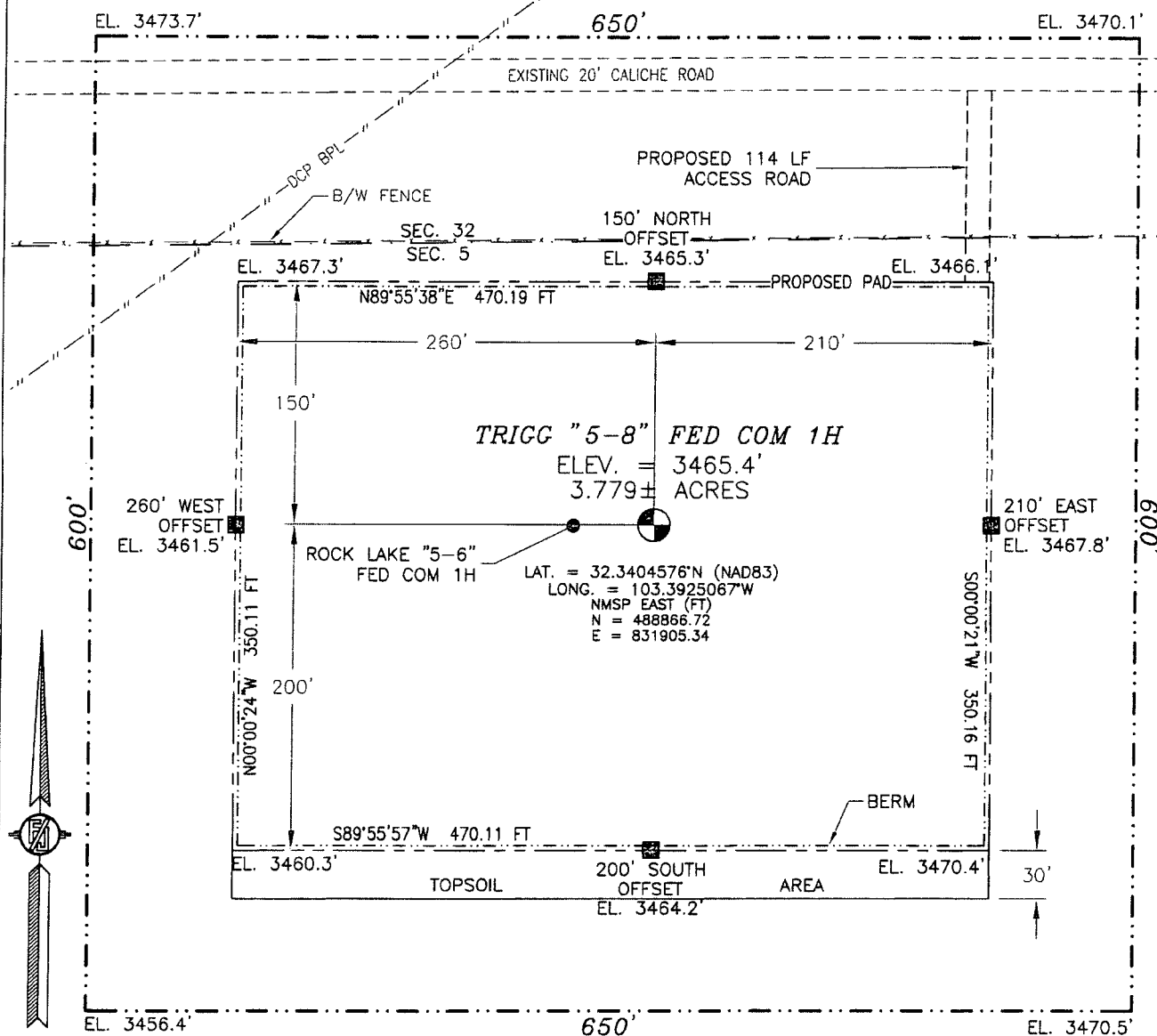
—Project Area
 —Producing Area

AUG 24 2015

SECTION 5, TOWNSHIP 23 SOUTH, RANGE 35 EAST, N.M.P.M.
LEA COUNTY, STATE OF NEW MEXICO

SITE MAP

NOTE: LATITUDE AND LONGITUDE COORDINATES ARE SHOWN USING THE NORTH AMERICAN DATUM OF 1983 (NAD83). LISTED NEW MEXICO STATE PLANE EAST COORDINATES ARE GRID (NAD83). BASIS OF BEARING AND DISTANCES USED ARE NEW MEXICO STATE PLANE EAST COORDINATES MODIFIED TO THE SURFACE



010 50 100 200

SCALE 1" = 100'

DIRECTIONS TO LOCATION

FROM THE INTERSECTION OF STATE HIGHWAY 128 AND CR 21 (DELAWARE BASIN ROAD) GO NORTH THEN EAST ON CR 21 APPROX. 16.6 MILES TO A LEASE ROAD ON LEFT (NORTHWEST). TURN WEST ON LEASE ROAD AND CATTLE GUARD, FOLLOW LEASE ROAD ALONG FENCE LINE (WEST). GO APPROX. 1.6 MILES TO ROAD LATH ON LEFT (SOUTH). TURN SOUTH GO APPROX. 114' TO THE NORTHEAST PAD CORNER FOR THIS LOCATION.

DEVON ENERGY PRODUCTION COMPANY, L.P.

TRIGG "5-8" FED COM 1H

LOCATED 175 FT. FROM THE NORTH LINE
AND 1750 FT. FROM THE WEST LINE OF
SECTION 5, TOWNSHIP 23 SOUTH,
RANGE 35 EAST, N.M.P.M.

LEA COUNTY, STATE OF NEW MEXICO

FEBRUARY 13, 2015

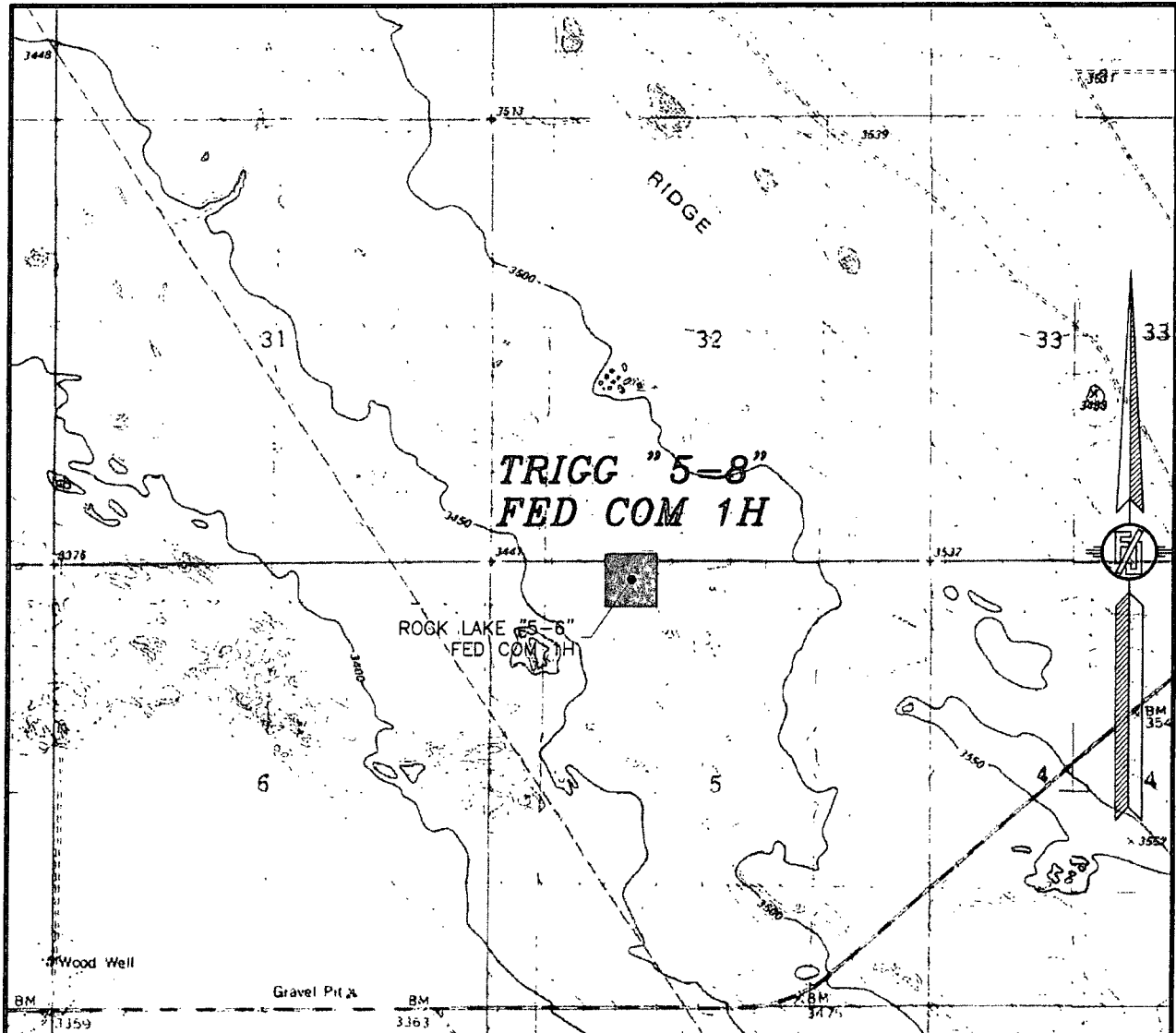
SURVEY NO. 3587A

MADRON SURVEYING, INC.

301 SOUTH CANAL
(575) 234-3341

CARLSBAD, NEW MEXICO

SECTION 5, TOWNSHIP 23 SOUTH, RANGE 35 EAST, N.M.P.M.
LEA COUNTY, STATE OF NEW MEXICO
LOCATION VERIFICATION MAP



USGS QUAD MAP:
SAN SIMON SINK

NOT TO SCALE

DEVON ENERGY PRODUCTION COMPANY, L.P.

TRIGG "5-8" FED COM 1H

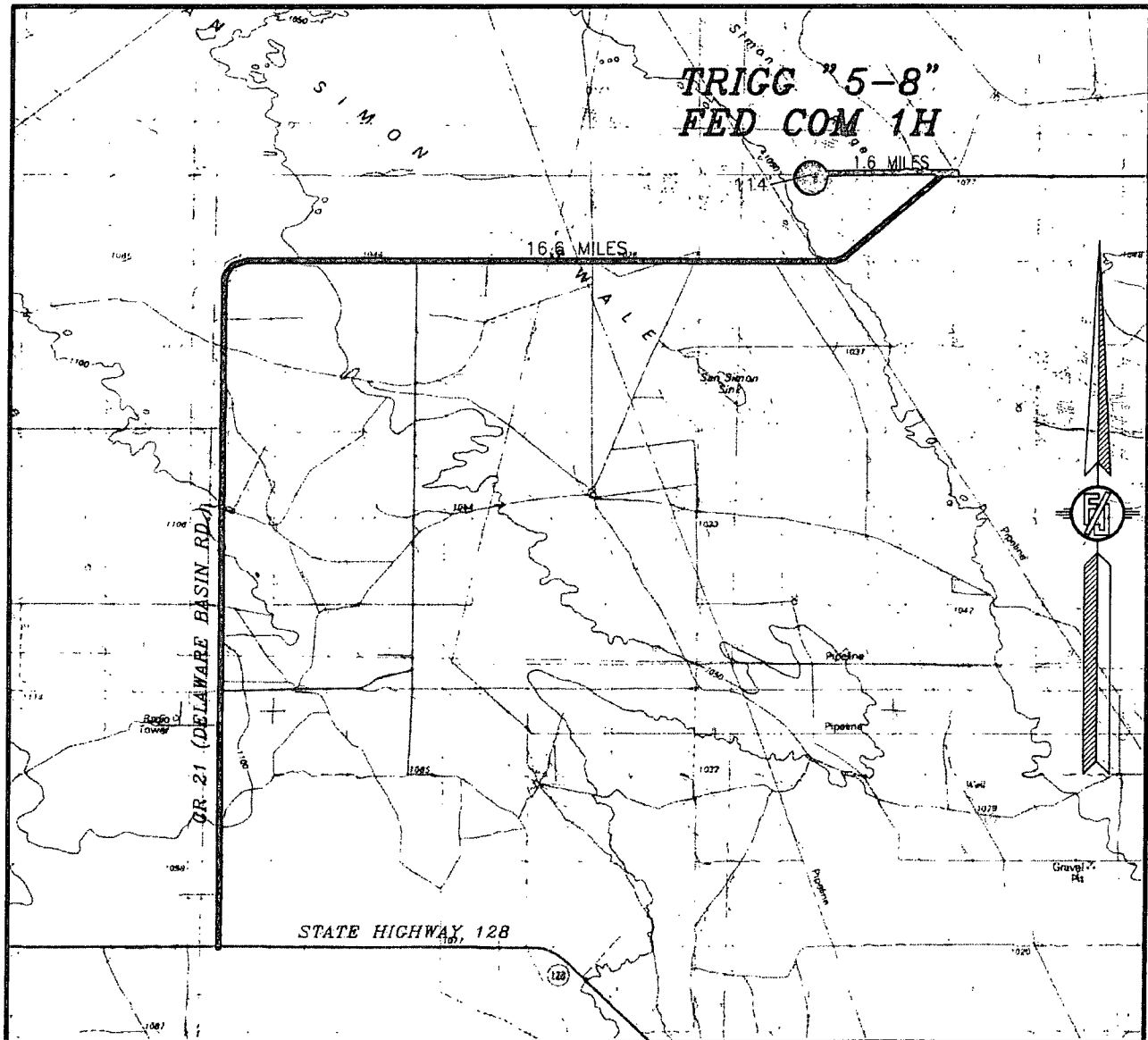
LOCATED 175 FT. FROM THE NORTH LINE
AND 1750 FT. FROM THE WEST LINE OF
SECTION 5, TOWNSHIP 23 SOUTH,
RANGE 35 EAST, N.M.P.M.
LEA COUNTY, STATE OF NEW MEXICO

FEBRUARY 13, 2015

SURVEY NO. 3587A

MADRON SURVEYING, INC. 301 SOUTH CANAL (575) 234-3341 CARLSBAD, NEW MEXICO

SECTION 5, TOWNSHIP 23 SOUTH, RANGE 35 EAST, N.M.P.M.
LEA COUNTY, STATE OF NEW MEXICO
VICINITY MAP



DISTANCES IN MILES

NOT TO SCALE

DEVON ENERGY PRODUCTION COMPANY, L.P.

TRIGG "5-8" FED COM 1H

LOCATED 175 FT. FROM THE NORTH LINE
AND 1750 FT. FROM THE WEST LINE OF
SECTION 5, TOWNSHIP 23 SOUTH,
RANGE 35 EAST, N.M.P.M.

LEA COUNTY, STATE OF NEW MEXICO

DIRECTIONS TO LOCATION

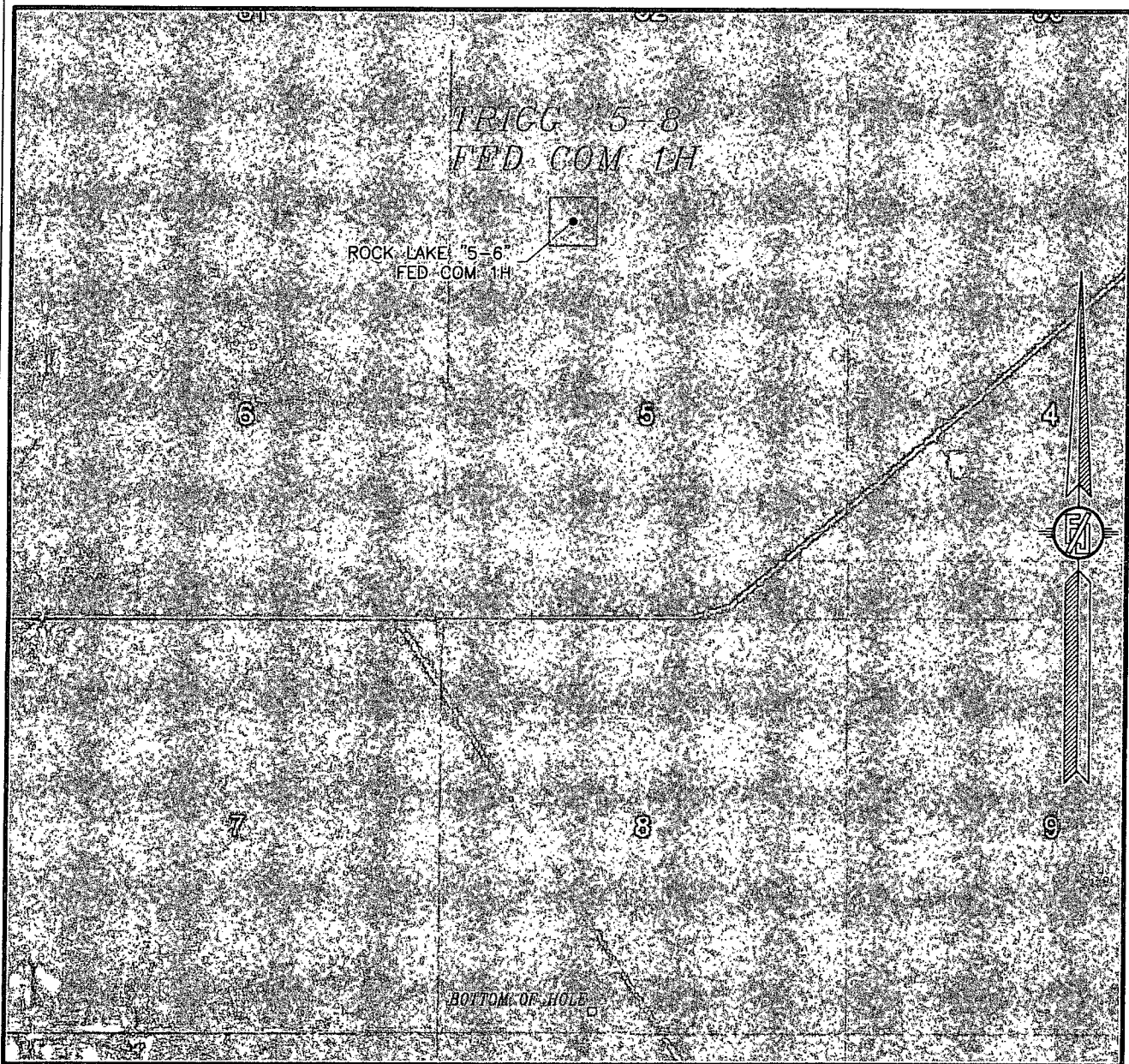
FROM THE INTERSECTION OF STATE HIGHWAY 128 AND CR 21 (DELAWARE BASIN ROAD) GO NORTH THEN EAST ON CR 21 APPROX. 16.6 MILES TO A LEASE ROAD ON LEFT (NORTHWEST). TURN WEST ON LEASE ROAD AND CATTLE GUARD, FOLLOW LEASE ROAD ALONG FENCE LINE (WEST) GO APPROX. 1.6 MILES TO ROAD LATH ON LEFT (SOUTH). TURN SOUTH GO APPROX. 114' TO THE NORTHEAST PAD CORNER FOR THIS LOCATION.

FEBRUARY 13, 2015

SURVEY NO. 3587A

MADRON SURVEYING, INC. 301 SOUTH CANAL (575) 234-3341 CARLSBAD, NEW MEXICO

SECTION 5, TOWNSHIP 23 SOUTH, RANGE 35 EAST, N.M.P.M.
LEA COUNTY, STATE OF NEW MEXICO
AERIAL PHOTO



NOT TO SCALE
AERIAL PHOTO:
GOOGLE EARTH
FEBRUARY 2014

DEVON ENERGY PRODUCTION COMPANY, L.P.

TRIGG "5-8" FED COM 1H

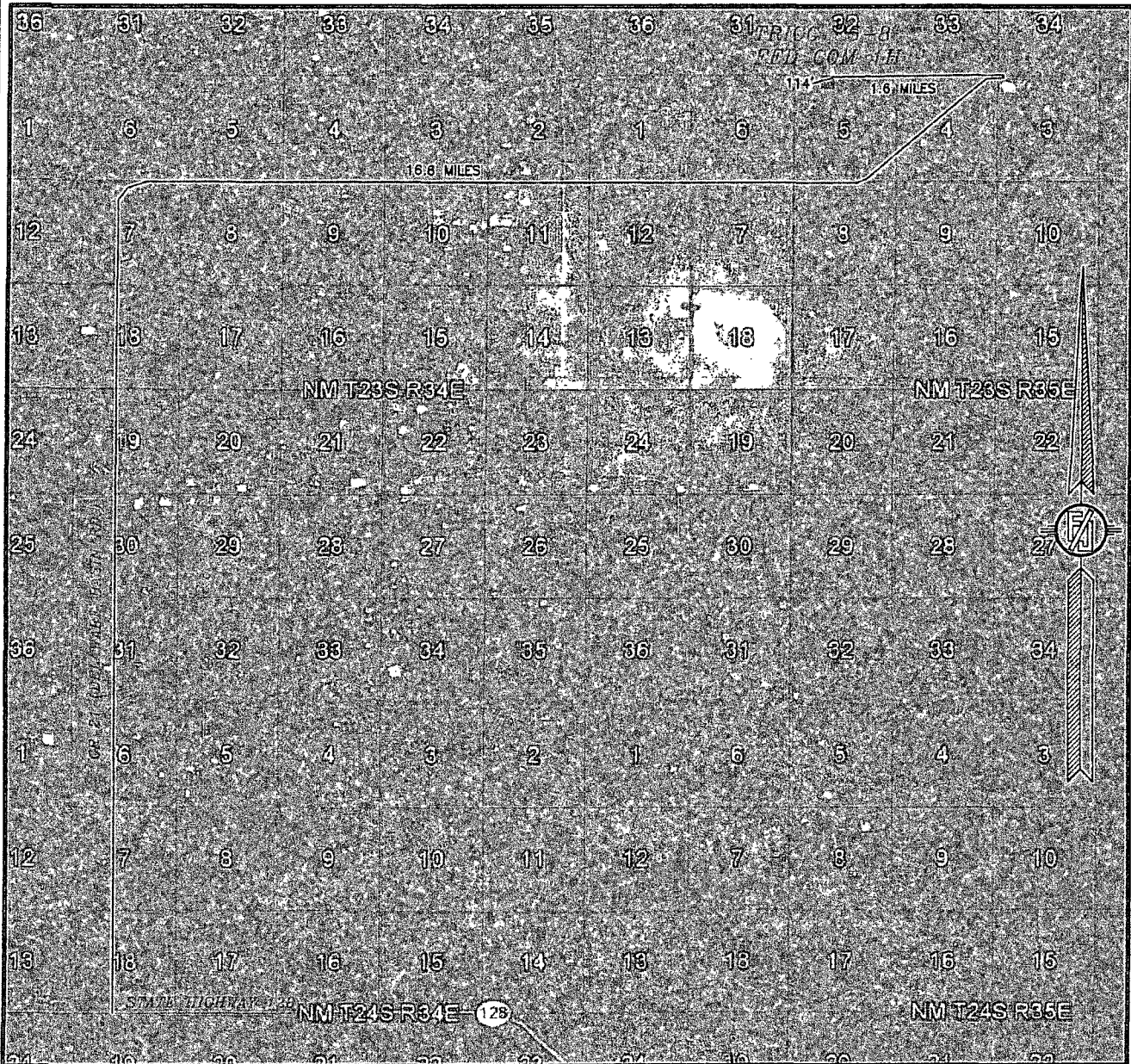
LOCATED 175 FT. FROM THE NORTH LINE
AND 1750 FT. FROM THE WEST LINE OF
SECTION 5, TOWNSHIP 23 SOUTH,
RANGE 35 EAST, N.M.P.M.
LEA COUNTY, STATE OF NEW MEXICO

FEBRUARY 13, 2015

SURVEY NO. 3587A

MADRON SURVEYING, INC. 301 SOUTH CANAL (575) 234-3341 CARLSBAD, NEW MEXICO

SECTION 5, TOWNSHIP 23 SOUTH, RANGE 35 EAST, N.M.P.M.
LEA COUNTY, STATE OF NEW MEXICO
ACCESS AERIAL ROUTE MAP



NOT TO SCALE
AERIAL PHOTO:
GOOGLE EARTH
FEBRUARY 2014

DEVON ENERGY PRODUCTION COMPANY, L.P.

TRIGG "5-8" FED COM 1H

LOCATED 175 FT. FROM THE NORTH LINE
AND 1750 FT. FROM THE WEST LINE OF
SECTION 5, TOWNSHIP 23 SOUTH,
RANGE 35 EAST, N.M.P.M.
LEA COUNTY, STATE OF NEW MEXICO

FEBRUARY 13, 2015

SURVEY NO. 3587A

MADRON SURVEYING, INC. 301 SOUTH CANAL (375) 234-3341 CARLSBAD, NEW MEXICO

One Mile Radius Map

Estimated distances to nearest wellbores:

*From SHL: Lennox 32 State 4H 1215 ft NW
 *From BHL: State Henry 17 1 2830 ft ESE

36

31

32

LENNOX '32' STATE
2H

LENNOX '32' STATE
4H

TRIGG 5-8 FED COM
1H

1-MILE

ROCK LAKE '6' FEDERAL
1

1

6

5

KELLER 4 STATE
1

23S 35E

12

7

8

FEDERAL SR

1-MILE

BHL

STATE-HENRY 17

18

17

devon

Trigg 5-8 Fed Com 1H

1 Mile Radius Map

0 1.958
FEET

WELL SYMBOLS
 DRY AND ABANDONED WELL
 GAS PRODUCING WELL
 OIL PRODUCING WELL
 PROPOSED
 AT TD

March 6, 2015