

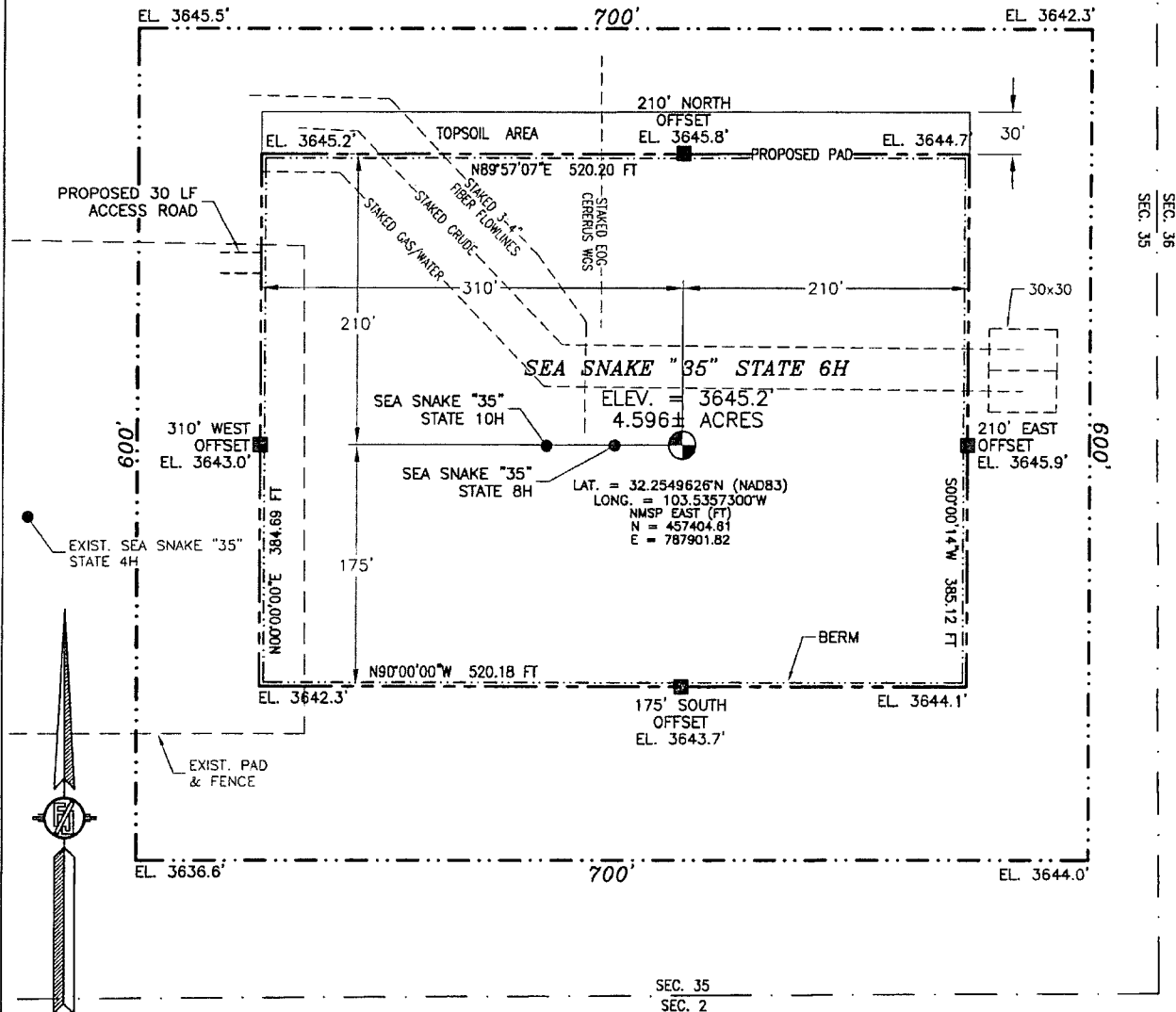
Form C-102  
Revised August 1, 2011  
Submit one copy to appropriate  
District Office  
☐ AMENDED REPORT

## AUG 31 2015

SECTION 35, TOWNSHIP 23 SOUTH, RANGE 33 EAST, N.M.P.M.  
LEA COUNTY, STATE OF NEW MEXICO

SITE MAP

NOTE: LATITUDE AND LONGITUDE COORDINATES ARE SHOWN USING THE NORTH AMERICAN DATUM OF 1983 (NAD83). LISTED NEW MEXICO STATE PLANE EAST COORDINATES ARE GRID (NAD83). BASIS OF BEARING AND DISTANCES USED ARE NEW MEXICO STATE PLANE EAST COORDINATES MODIFIED TO THE SURFACE



0 12 60 120 240

SCALE 1" = 120'

DIRECTIONS TO LOCATION

FROM THE INTERSECTION OF STATE HIGHWAY 128 AND CR J2 (BRINISTOOL ROAD) GO NORTHWEST ON CR J2 APPROX. 3.2 MILES TO CALICHE LEASE ROAD ON RIGHT PAST FRAC POND, GO EAST (RIGHT) APPROX. 0.46 OF A MILE, TURN NORTH GO APPROX. 450', TURN RIGHT APPROX. 0.41 OF A MILE TAKE ROAD NORTH SIDE OF PAD GO APPROX. 0.42 OF A MILE TO EXISTING PAD FOR SEA SNAKE "35" STATE 1H & 2H. FROM NORTHEAST CORNER OF PAD GO EAST FOLLOW FLAGS APPROX. 1369' TO NORTHWEST CORNER OF SEA SNAKE "35" STATE 3H. FROM THE NORTHEAST CORNER OF PAD GO EAST 898' TO THE NORTHWEST CORNER OF SEA SNAKE "35" STATE 4H. FROM THE EAST SIDE OF PAD GO EAST 30' TO THE NORTHWEST PAD CORNER FOR THIS LOCATION.

DEVON ENERGY PRODUCTION COMPANY, L.P.

SEA SNAKE "35" STATE 6H

LOCATED 400 FT. FROM THE SOUTH LINE  
AND 350 FT. FROM THE EAST LINE OF  
SECTION 35, TOWNSHIP 23 SOUTH,  
RANGE 33 EAST, N.M.P.M.  
LEA COUNTY, STATE OF NEW MEXICO

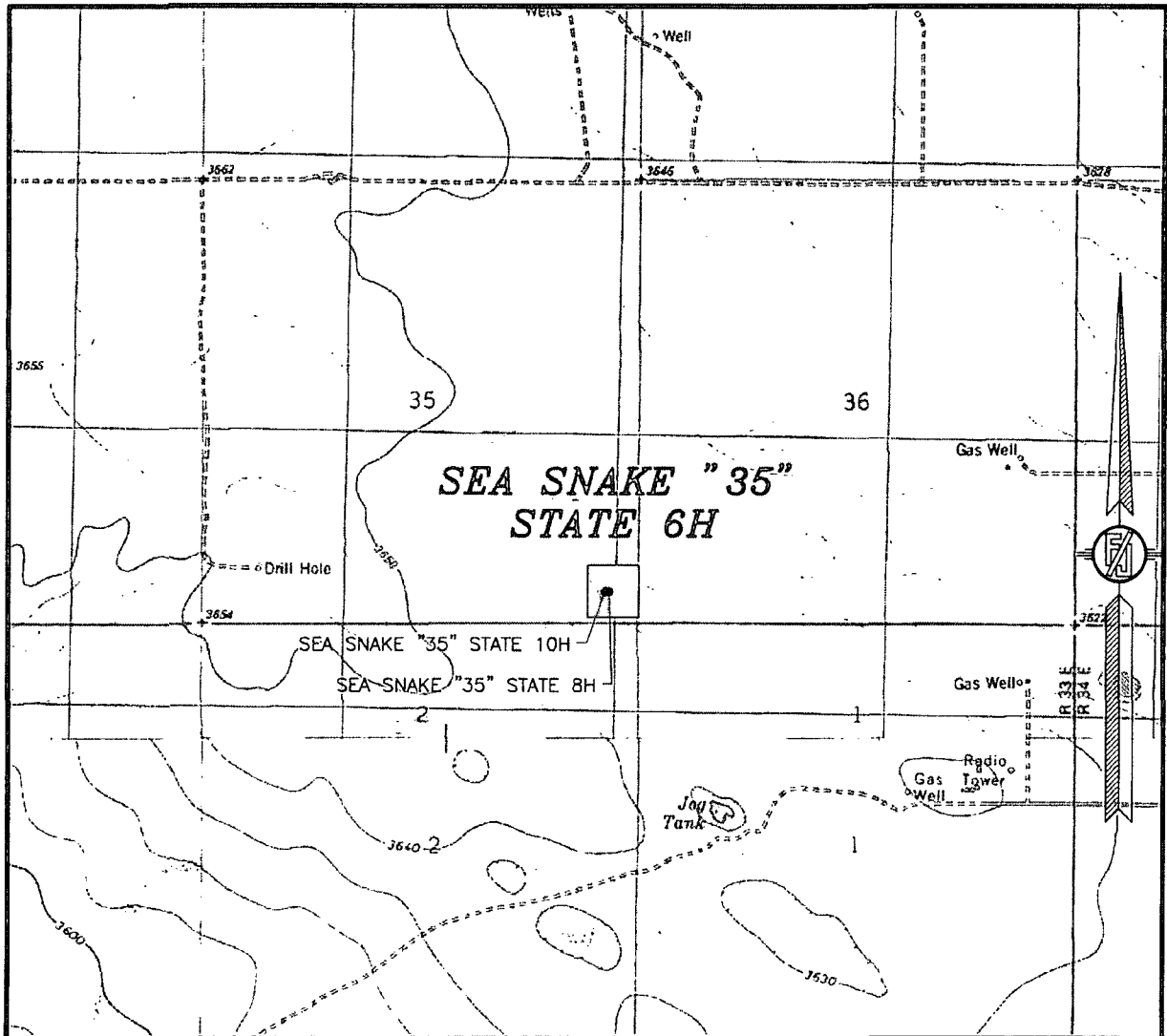
JUNE 23, 2015

SURVEY NO. 3814A

MADRON SURVEYING, INC. 301 SOUTH CANAL (575) 234-3341

CARLSBAD, NEW MEXICO

SECTION 35, TOWNSHIP 23 SOUTH, RANGE 33 EAST, N.M.P.M.  
LEA COUNTY, STATE OF NEW MEXICO  
LOCATION VERIFICATION MAP



USGS QUAD MAP:  
TIP TOP WELLS

NOT TO SCALE

DEVON ENERGY PRODUCTION COMPANY, L.P.

**SEA SNAKE "35" STATE 6H**

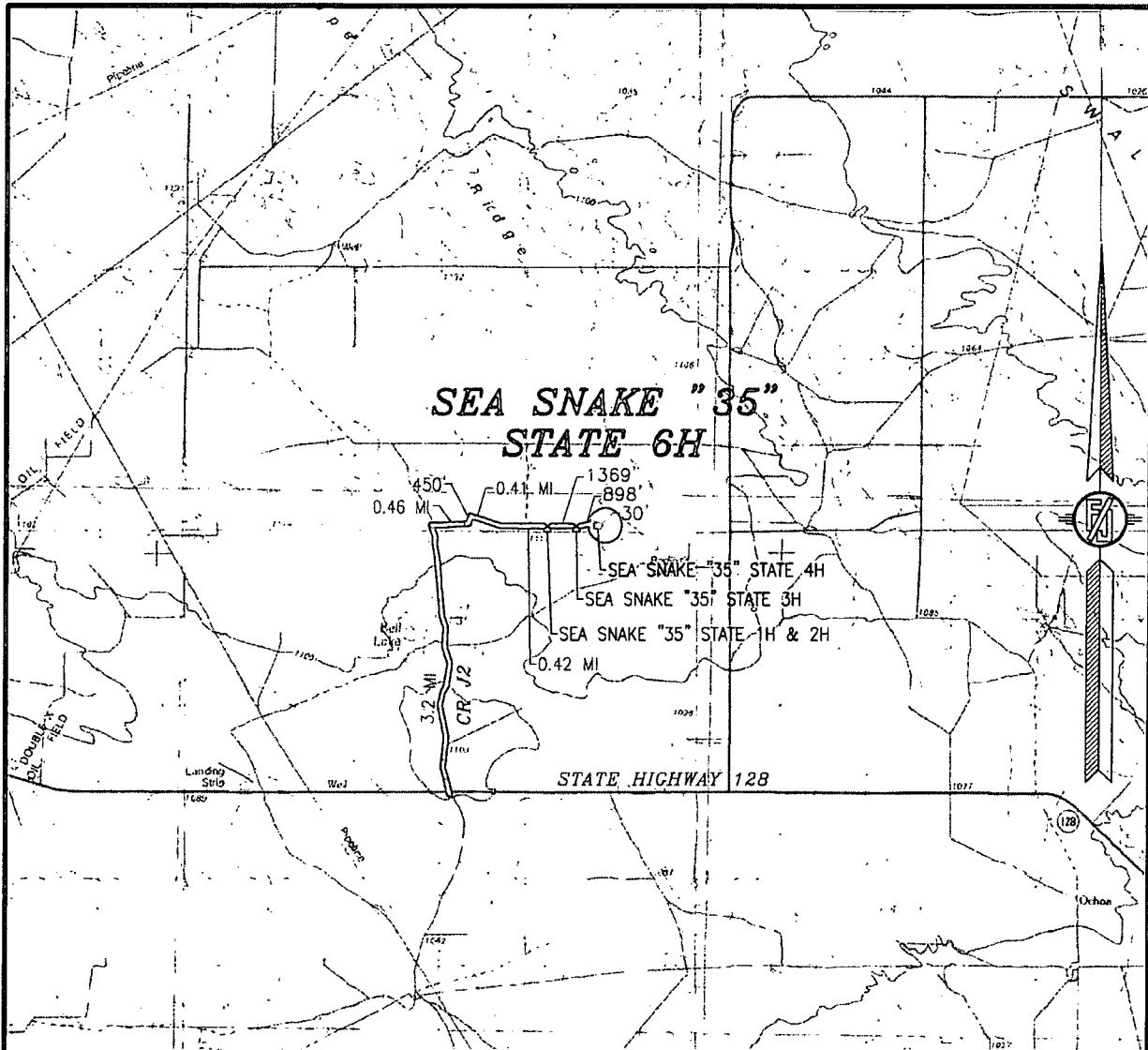
LOCATED 400 FT. FROM THE SOUTH LINE  
AND 350 FT. FROM THE EAST LINE OF  
SECTION 35, TOWNSHIP 23 SOUTH,  
RANGE 33 EAST, N.M.P.M.  
LEA COUNTY, STATE OF NEW MEXICO

JUNE 23, 2015

SURVEY NO. 3814A

MADRON SURVEYING, INC. 301 SOUTH CANAL (575) 234-3341 CARLSBAD, NEW MEXICO

SECTION 35, TOWNSHIP 23 SOUTH, RANGE 33 EAST, N.M.P.M.  
LEA COUNTY, STATE OF NEW MEXICO  
VICINITY MAP



DISTANCES IN MILES

NOT TO SCALE

DEVON ENERGY PRODUCTION COMPANY, L.P.

**SEA SNAKE "35" STATE 6H**

LOCATED 400 FT. FROM THE SOUTH LINE

AND 350 FT. FROM THE EAST LINE OF

SECTION 35, TOWNSHIP 23 SOUTH,

RANGE 33 EAST, N.M.P.M.

LEA COUNTY, STATE OF NEW MEXICO

JUNE 23, 2015

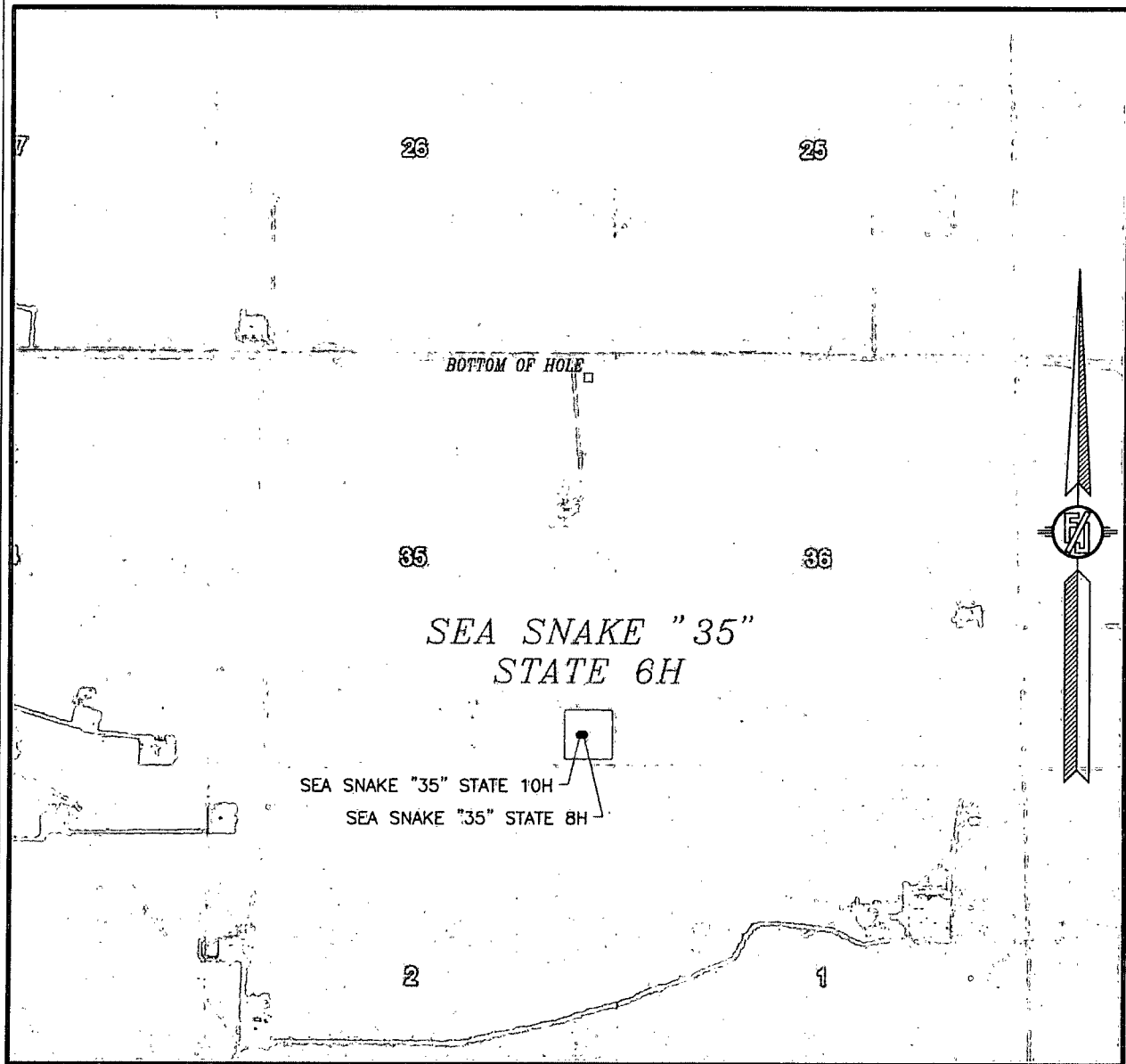
**DIRECTIONS TO LOCATION**

FROM THE INTERSECTION OF STATE HIGHWAY 128 AND CR J2 (BRININSTOOL ROAD) GO NORTHWEST ON CR J2 APPROX. 3.2 MILES TO CALICHE LEASE ROAD ON RIGHT PAST FRAC POND, GO EAST (RIGHT) APPROX. 0.46 OF A MILE, TURN NORTH GO APPROX. 450', TURN RIGHT APPROX. 0.41 OF A MILE TAKE ROAD NORTH SIDE OF PAD GO APPROX. 0.42 OF A MILE TO EXISTING PAD FOR SEA SNAKE "35" STATE 1H & 2H. FROM NORTHEAST CORNER OF PAD GO EAST FOLLOW FLAGS APPROX. 1369' TO NORTHWEST CORNER OF SEA SNAKE "35" STATE 3H. FROM THE NORTHEAST CORNER OF PAD GO EAST 898' TO THE NORTHWEST CORNER OF SEA SNAKE "35" STATE 4H. FROM THE EAST SIDE OF PAD GO EAST 30' TO THE NORTHWEST PAD CORNER FOR THIS LOCATION.

SURVEY NO. 3814A

MADRON SURVEYING, INC. 301 SOUTH CANAL (575) 234-3341 CARLSBAD, NEW MEXICO

SECTION 35, TOWNSHIP 23 SOUTH, RANGE 33 EAST, N.M.P.M.  
LEA COUNTY, STATE OF NEW MEXICO  
AERIAL PHOTO



NOT TO SCALE  
AERIAL PHOTO:  
GOOGLE EARTH  
FEBRUARY 2014

DEVON ENERGY PRODUCTION COMPANY, L.P.

**SEA SNAKE "35" STATE 6H**

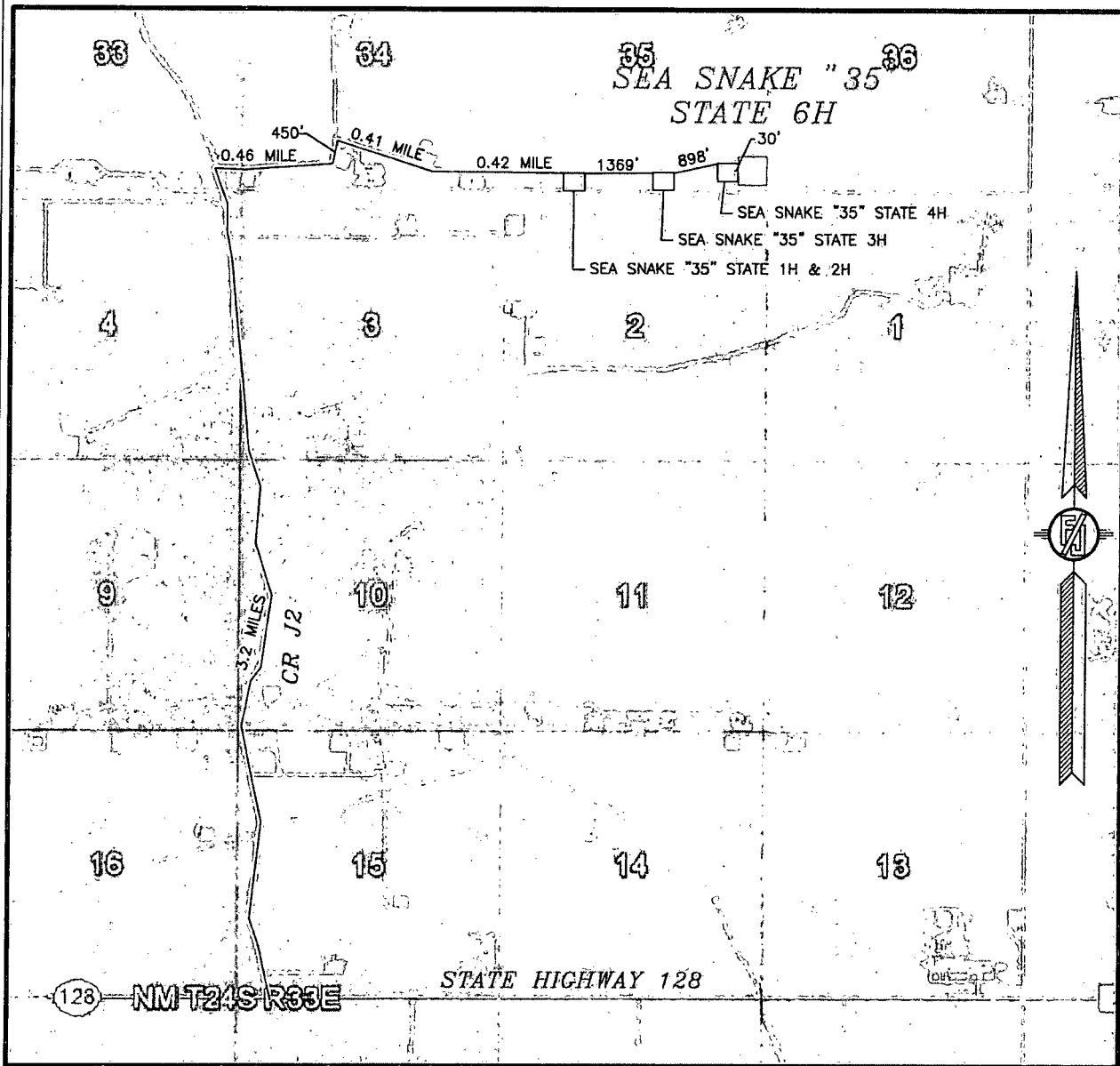
LOCATED 400 FT. FROM THE SOUTH LINE  
AND 350 FT. FROM THE EAST LINE OF  
SECTION 35, TOWNSHIP 23 SOUTH,  
RANGE 33 EAST, N.M.P.M.  
LEA COUNTY, STATE OF NEW MEXICO

JUNE 23, 2015

SURVEY NO. 3814A

MADRON SURVEYING, INC. 301 SOUTH CANAL (575) 234-3341 CARLSBAD, NEW MEXICO

SECTION 35, TOWNSHIP 23 SOUTH, RANGE 33 EAST, N.M.P.M.  
LEA COUNTY, STATE OF NEW MEXICO  
ACCESS AERIAL ROUTE MAP



NOT TO SCALE  
AERIAL PHOTO:  
GOOGLE EARTH  
FEBRUARY 2014

DEVON ENERGY PRODUCTION COMPANY, L.P.

**SEA SNAKE "35" STATE 6H**

LOCATED 400 FT. FROM THE SOUTH LINE  
AND 350 FT. FROM THE EAST LINE OF  
SECTION 35, TOWNSHIP 23 SOUTH,  
RANGE 33 EAST, N.M.P.M.  
LEA COUNTY, STATE OF NEW MEXICO

JUNE 23, 2015

SURVEY NO. 3814A

MADRON SURVEYING, INC. 301 SOUTH CANAL (575) 234-3341 CARLSBAD, NEW MEXICO