

SEP 08 2015

RECEIVED

District I
1625 N. French Dr., Hobbs, NM 88240
Phone: (575) 393-6161 Fax: (575) 393-0720

District II
811 S. East St., Artesia, NM 88210
Phone: (575) 748-1283 Fax: (575) 748-9720

District III
1000 Rio Brazos Road, Aztec, NM 87410
Phone: (505) 334-6178 Fax: (505) 334-6170

District IV
1230 S. St. Francis Dr., Santa Fe, NM 87505
Phone: (505) 476-3460 Fax: (505) 476-3462

State of New Mexico
Energy, Minerals & Natural Resources Department
OIL CONSERVATION DIVISION
1220 South St. Francis Dr.
Santa Fe, NM 87505

Form C-102
Revised August 1, 2011
Submit one copy to appropriate
District Office

☐ AMENDED REPORT

WELL LOCATION AND ACREAGE DEDICATION PLAT

¹ API Number 30-025-42775		² Pool Code 97900	³ Pool Name RED HILLS; UPPER BONE SPRING SHALE
⁴ Property Code 315247	⁵ Property Name SEAWOLF 12-1 FED		⁶ Well Number 1H
⁷ OGRID No. 6137	⁸ Operator Name DEVON ENERGY PRODUCTION COMPANY, L.P.		⁹ Elevation 3359.5

¹⁰ Surface Location

UL or lot no.	Section	Township	Range	Lot Idn	Feet from the	North/South line	Feet from the	East/West line	County
A	13	26 S	33 E		200	NORTH	575	EAST	LEA

¹¹ Bottom Hole Location If Different From Surface

UL or lot no.	Section	Township	Range	Lot Idn	Feet from the	North/South line	Feet from the	East/West line	County
A	1	26 S	33 E		330	NORTH	660	EAST	LEA

¹² Dedicated Acres 320.360	¹³ Joint or Infill	¹⁴ Consolidation Code	¹⁵ Order No.
---	-------------------------------	----------------------------------	-------------------------

No allowable will be assigned to this completion until all interests have been consolidated or a non-standard unit has been approved by the division.

<p>NW CORNER SEC. 1 LAT. = 32.0797361°N LONG. = 103.5345920°W NMSP EAST (FT) N = 393681.02 E = 788726.80</p> <p>W/4 CORNER SEC. 1 LAT. = 32.0724782°N LONG. = 103.5345927°W NMSP EAST (FT) N = 391020.69 E = 788746.13</p> <p>SECTION CORNER LAT. = 32.0652187°N LONG. = 103.5345991°W NMSP EAST (FT) N = 388379.76 E = 788763.68</p> <p>W/4 CORNER SEC. 12 LAT. = 32.0579663°N LONG. = 103.5345925°W NMSP EAST (FT) N = 385741.43 E = 788785.24</p> <p>SECTION CORNER LAT. = 32.0507098°N LONG. = 103.5345921°W NMSP EAST (FT) N = 383101.54 E = 788804.91</p> <p>W/4 CORNER SEC. 13 LAT. = 32.0434539°N LONG. = 103.5345930°W NMSP EAST (FT) N = 380462.02 E = 788824.15</p>		<p>M/4 CORNER SEC. 11 LAT. = 32.0797370°N LONG. = 103.5260583°W NMSP EAST (FT) N = 393681.02 E = 791369.95</p> <p>W/4 CORNER SEC. 11 LAT. = 32.0788284°N LONG. = 103.5196621°W NMSP EAST (FT) N = 393365.36 E = 793353.58</p> <p>QUARTER CORNER LAT. = 32.0652197°N LONG. = 103.5260653°W NMSP EAST (FT) N = 388399.78 E = 791407.30</p> <p>QUARTER CORNER LAT. = 32.0507003°N LONG. = 103.5260504°W NMSP EAST (FT) N = 383117.88 E = 791451.40</p> <p>SEAWOLF 12-1 FED 1H LAT. = 32.0501444°N (NAD83) LONG. = 103.5193913°W NMSP EAST (FT) N = 382931.09 E = 793516.15</p>		<p>NE CORNER SEC. 1 LAT. = 32.0797339°N LONG. = 103.5175316°W NMSP EAST (FT) N = 393699.75 E = 794010.97</p> <p>E/4 CORNER SEC. 1 LAT. = 32.0724766°N LONG. = 103.5175341°W NMSP EAST (FT) N = 391059.61 E = 794030.14</p> <p>SECTION CORNER LAT. = 32.0652206°N LONG. = 103.5175327°W NMSP EAST (FT) N = 388419.97 E = 794050.53</p> <p>E/4 CORNER SEC. 12 LAT. = 32.0579557°N LONG. = 103.5175350°W NMSP EAST (FT) N = 385777.11 E = 794069.80</p> <p>SECTION CORNER LAT. = 32.0506923°N LONG. = 103.5175349°W NMSP EAST (FT) N = 383134.75 E = 794089.79</p> <p>E/4 CORNER SEC. 13 LAT. = 32.0434328°N LONG. = 103.5175361°W NMSP EAST (FT) N = 380493.86 E = 794109.39</p>	
--	--	---	--	--	--

NOTE: LATITUDE AND LONGITUDE COORDINATES ARE SHOWN USING THE NORTH AMERICAN DATUM OF 1983 (NAD83). LISTED NEW MEXICO STATE PLANE EAST COORDINATES ARE GRID (NAD83). BASIS OF BEARING AND DISTANCES USED ARE NEW MEXICO STATE PLANE EAST COORDINATES MODIFIED TO THE SURFACE.

575' SURFACE LOCATION

200'

¹⁷ OPERATOR CERTIFICATION

I hereby certify that the information contained herein is true and complete to the best of my knowledge and belief, and that this organization either owns a working interest or unless mineral interest in the land including the proposed bottom hole location or has a right to drill this well at this location pursuant to a contract with an owner of such a mineral or working interest, or to a contract, pooling agreement or a completion pooling order heretofore entered by the division.

Signature: *[Signature]* Date: **2/25/2015**

David H. Cook

Printed Name:

david.cook@dvn.com

E-mail Address:

¹⁸ SURVEYOR CERTIFICATION

I hereby certify that the well location shown on this plat was plotted from field notes of actual surveys made by me or under my supervision, and that the same are true and correct to the best of my belief.

FEBRUARY 18, 2015

Date of Survey:

Signature and Seal of Professional Surveyor

Certificate Number: FILIPINO F. JARAMILLO, PLS 12797

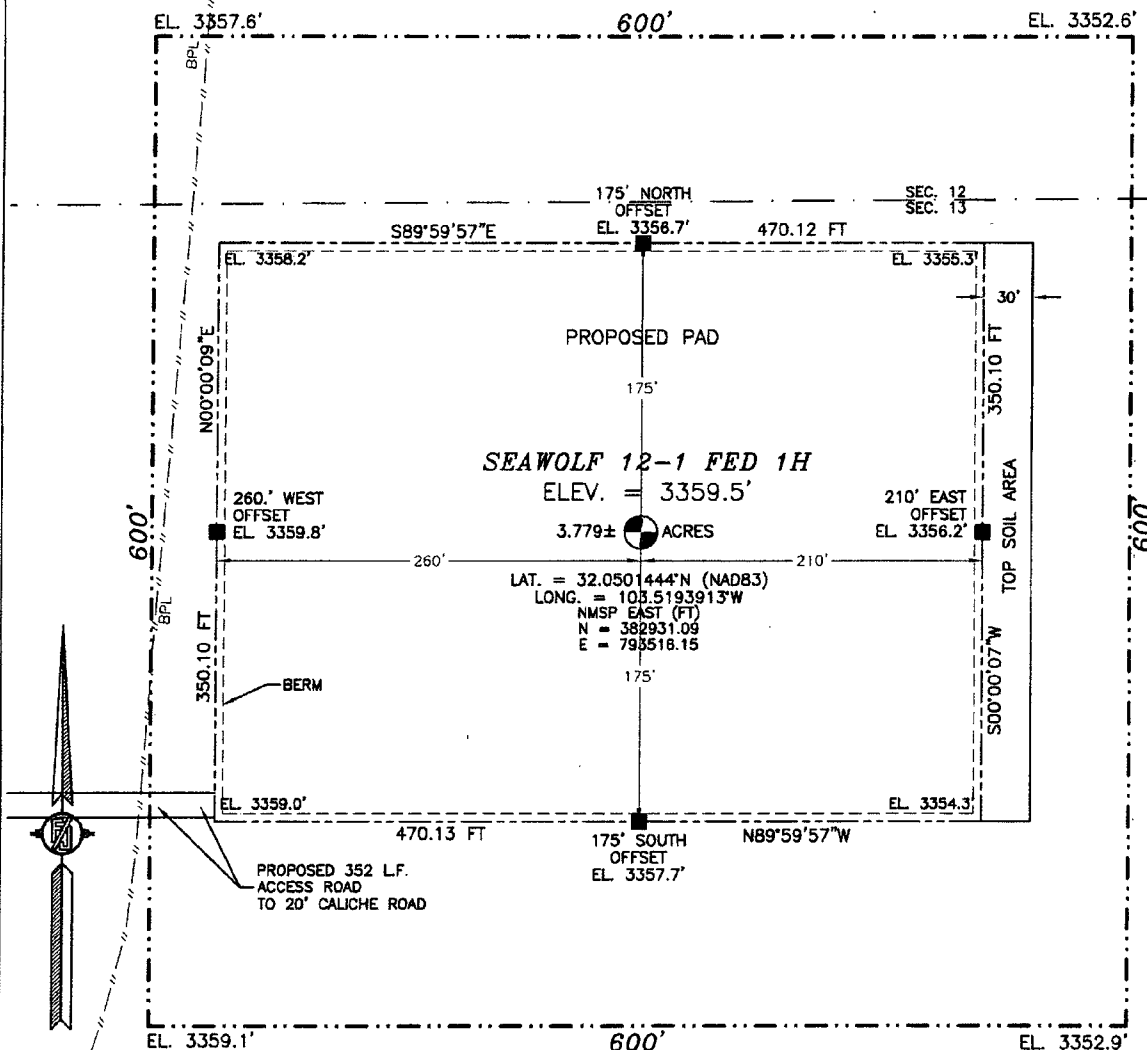
SURVEY NO. 3493D

PP: 200 FSL & 660 FEL; 12-26S-33E

SEP 09 2015

SECTION 13, TOWNSHIP 26 SOUTH, RANGE 33 EAST, N.M.P.M.
LEA COUNTY, STATE OF NEW MEXICO
SITE MAP

NOTE: LATITUDE AND LONGITUDE COORDINATES ARE SHOWN USING THE NORTH AMERICAN DATUM OF 1983 (NAD83). LISTED NEW MEXICO STATE PLANE EAST COORDINATES ARE GRID (NAD83). BASIS OF BEARING AND DISTANCES USED ARE NEW MEXICO STATE PLANE EAST COORDINATES MODIFIED TO THE SURFACE.



010 50 100 200

SCALE 1" = 100'

DIRECTIONS TO LOCATION

FROM THE INTERSECTION OF NM HWY 128 (JAL HWY) AND CR 2 (BATTLE AXE ROAD) GO SOUTH ON BATTLE AXE ROAD 12.31 MILES TURN LEFT AT A CALICHE LEASE ROAD GO SOUTH 0.65 MILES TO PIPE LINE ROAD TURN LEFT GO EAST 1.81 MILES TURN RIGHT AT CALICHE LEASE ROAD GO SOUTH 1.55 MILES TO CALICHE LEASE ROAD ON RIGHT GO WEST 0.81 MILES TO A BEND IN THE ROAD FOLLOW FLAGS WEST ABOUT 1134 L.F. TO NORTH-SOUTH CALICHE LEASE ROAD GO NORTH ALONG CALICHE LEASE ROAD CENTERLINE 3028 L.F. (0.57 MILES) TO A PROPOSED ROAD ON RIGHT FOLLOW FLAGS EAST 352 L.F. TO SOUTHWEST CORNER OF PROPOSED PAD.

DEVON ENERGY PRODUCTION COMPANY, L.P.

SEAWOLF 12-1 FED 1H

LOCATED 200 FT. FROM THE NORTH LINE

AND 575 FT. FROM THE EAST LINE OF

SECTION 13, TOWNSHIP 26 SOUTH,

RANGE 33 EAST, N.M.P.M.

LEA COUNTY, STATE OF NEW MEXICO

FEBRUARY 18, 2015

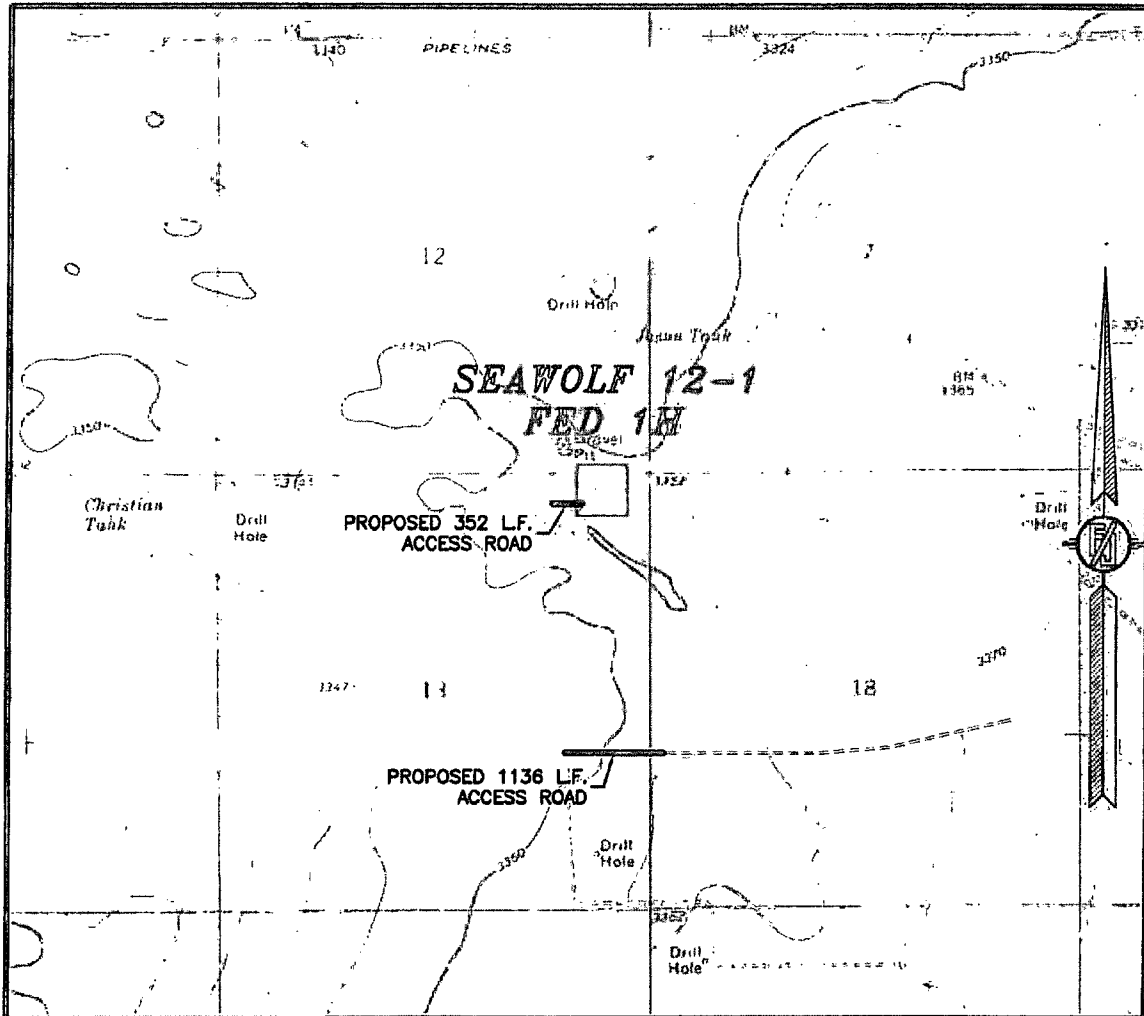
SURVEY NO. 3493D

MADRON SURVEYING, INC.

301 SOUTH CANAL
(575) 234-3341

CARLSBAD, NEW MEXICO

SECTION 13, TOWNSHIP 26 SOUTH, RANGE 33 EAST, N.M.P.M.
LEA COUNTY, STATE OF NEW MEXICO
LOCATION VERIFICATION MAP



USGS QUAD MAP:
PADUCA BREAKS EAST

NOT TO SCALE

DEVON ENERGY PRODUCTION COMPANY, L.P.
SEAWOLF 12-1 FED 1H

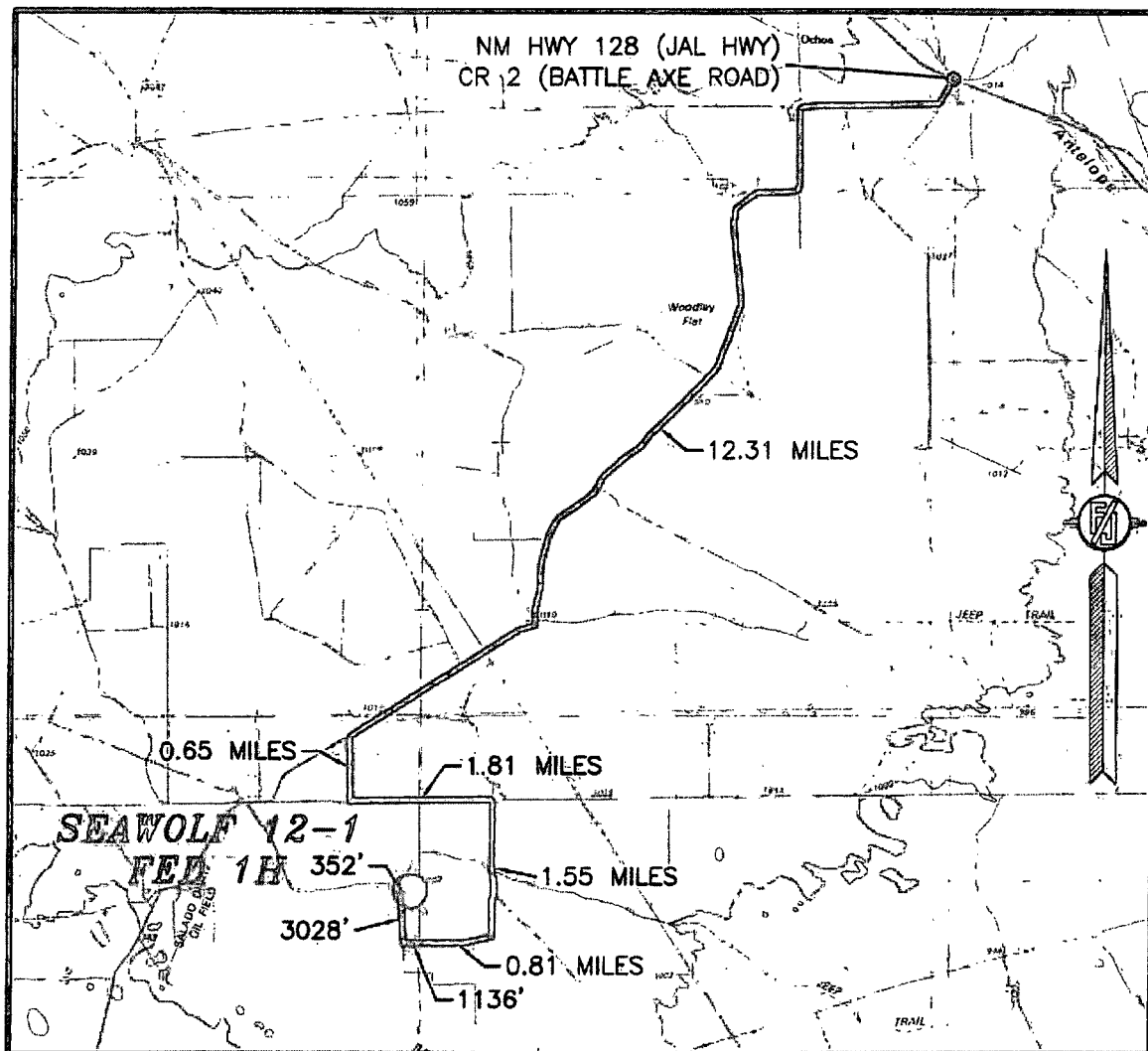
LOCATED 200 FT. FROM THE NORTH LINE
AND 575 FT. FROM THE EAST LINE OF
SECTION 13, TOWNSHIP 26 SOUTH,
RANGE 33 EAST, N.M.P.M.
LEA COUNTY, STATE OF NEW MEXICO

FEBRUARY 18, 2015

SURVEY NO. 3493D

MADRON SURVEYING, INC. 301 SOUTH CANAL CARLSBAD, NEW MEXICO
(575) 234-3341

SECTION 13, TOWNSHIP 26 SOUTH, RANGE 33 EAST, N.M.P.M.
LEA COUNTY, STATE OF NEW MEXICO
VICINITY MAP



DISTANCES IN MILES

NOT TO SCALE

DIRECTIONS TO LOCATION

FROM THE INTERSECTION OF NM HWY 128 (JAL HWY) AND CR 2 (BATTLE AXE ROAD) GO SOUTH ON BATTLE AXE ROAD 12.31 MILES TURN LEFT AT A CALICHE LEASE ROAD GO SOUTH 0.65 MILES TO PIPE LINE ROAD TURN LEFT GO EAST 1.81 MILES TURN RIGHT AT CALICHE LEASE ROAD GO SOUTH 1.55 MILES TO CALICHE LEASE ROAD ON RIGHT GO WEST 0.81 MILES TO A BEND IN THE ROAD FOLLOW FLAGS WEST ABOUT 1136 L.F. TO NORTH-SOUTH CALICHE LEASE ROAD GO NORTH ALONG CALICHE LEASE ROAD CENTERLINE 3028 L.F. (0.57 MILES) TO A PROPOSED ROAD ON RIGHT FOLLOW FLAGS EAST 352 L.F. TO SOUTHWEST CORNER OF PROPOSED PAD.

DEVON ENERGY PRODUCTION COMPANY, L.P.

SEAWOLF 12-1 FED 1H

LOCATED 200 FT. FROM THE NORTH LINE

AND 575 FT. FROM THE EAST LINE OF

SECTION 13, TOWNSHIP 26 SOUTH,

RANGE 33 EAST, N.M.P.M.

LEA COUNTY, STATE OF NEW MEXICO

FEBRUARY 18, 2015

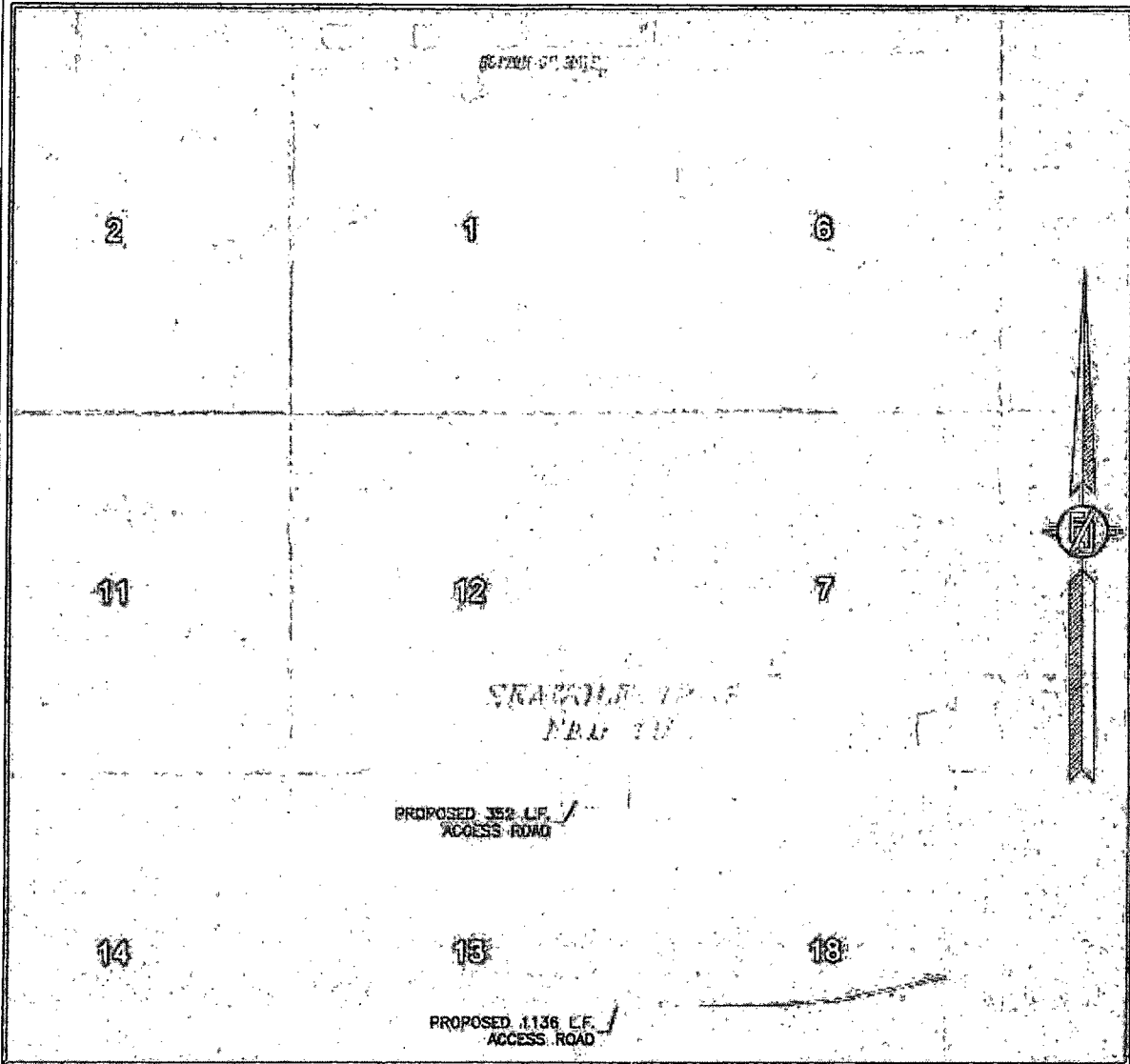
SURVEY NO. 3493D

MADRON SURVEYING, INC. 301 SOUTH CANAL

(575) 234-3341

CARLSBAD, NEW MEXICO

SECTION 13, TOWNSHIP 26 SOUTH, RANGE 33 EAST, N.M.P.M.
LEA COUNTY, STATE OF NEW MEXICO
AERIAL PHOTO



NOT TO SCALE
AERIAL PHOTO:
GOOGLE EARTH
APR. 2013

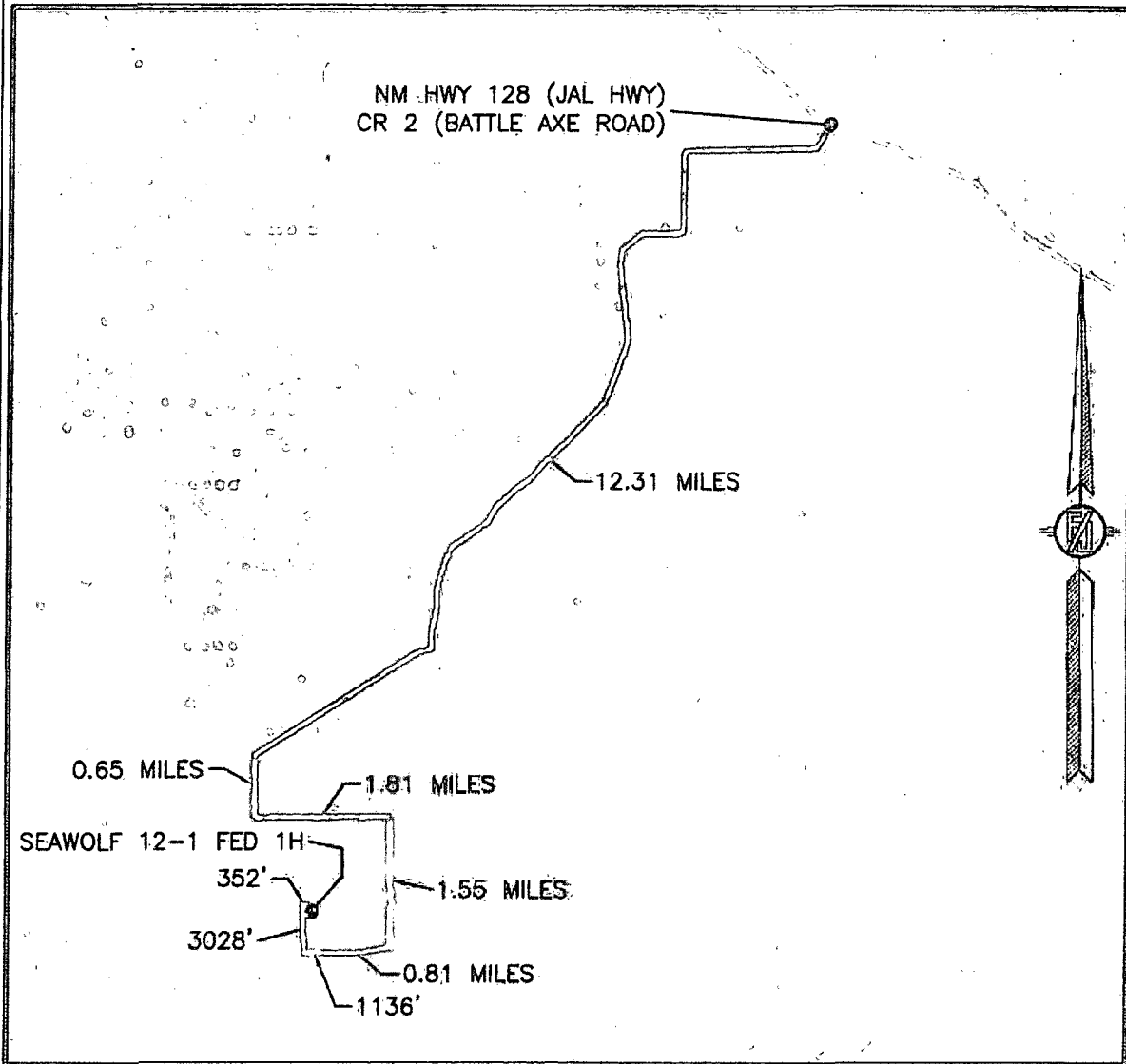
DEVON ENERGY PRODUCTION COMPANY, L.P.
SEAWOLF 12-1 FED 1H
LOCATED 200 FT. FROM THE NORTH LINE
AND 575 FT. FROM THE EAST LINE OF
SECTION 13, TOWNSHIP 26 SOUTH,
RANGE 33 EAST, N.M.P.M.
LEA COUNTY, STATE OF NEW MEXICO

FEBRUARY 18, 2015

SURVEY NO. 3493D

MADRON SURVEYING, INC. 301 SOUTH CANAL
(575) 234-3341 **CARLSBAD, NEW MEXICO**

SECTION 13, TOWNSHIP 26 SOUTH, RANGE 33 EAST, N.M.P.M.
LEA COUNTY, STATE OF NEW MEXICO
AERIAL ACCESS ROUTE MAP



NOT TO SCALE
AERIAL PHOTO:
GOOGLE EARTH
APR. 2013

DEVON ENERGY PRODUCTION COMPANY, L.P.
SEAWOLF 12-1 FED 1H

LOCATED 200 FT. FROM THE NORTH LINE
AND 575 FT. FROM THE EAST LINE OF
SECTION 13, TOWNSHIP 26 SOUTH,
RANGE 33 EAST, N.M.P.M.
LEA COUNTY, STATE OF NEW MEXICO

FEBRUARY 18, 2015

SURVEY NO. 3493D

MADRON SURVEYING, INC. 301 SOUTH CANAL (575) 234-3341 CARLSBAD, NEW MEXICO

One Mile Radius Map

Estimated distances to nearest wellbores:

*From SHL: Fighting Okra 18 Fed Com 1H_ST 1000 ft E
 Salado Draw 6 Federal 1H 1040 ft E
 Conoco-Federal 1 crosses wellbore
 Black Bear 36 State 2H 565 ft NW
 Black Bear 36 State 2H 905 ft NW
 *From BHL: Black Bear 36 State 3H 420 ft NE

26S 33E

devon

Seawolf 12-1 Fed 1H

1 Mile Radius Map

0 2,015
 FEET

WELL SYMBOLS
 ABANDONED OIL WELL
 DRY AND ABANDONED WELL
 DRY HOLE WITH GAS SHOW
 OIL PRODUCING WELL
 PROPOSED
 SERVICE WELL
 AI TD

January 15, 2015

