

Office

Energy, Minerals and Natural Resources

Revised July 18, 2013

District I - (575) 393-6161

1625 N. French Dr., Hobbs, NM 88240

District II - (575) 748-1283

811 S. First St., Artesia, NM 88210

District III - (505) 334-6178

1000 Rio Brazos Rd., Aztec, NM 87410

District IV - (505) 476-3460

1220 S. St. Francis Dr., Santa Fe, NM

87505

HOBBS OCD

SEP 10 2015

RECEIVED

OIL CONSERVATION DIVISION

1220 South St. Francis Dr.

Santa Fe, NM 87505

WELL API NO.

30-025-24837

5. Indicate Type of Lease

STATE ☐ FEE ☒

6. State Oil & Gas Lease No.

7. Lease Name or Unit Agreement Name

LANGLIE JAL UNIT

8. Well Number 2

9. OGRID Number

240974

10. Pool name or Wildcat

LANGLIE MATTIX;7RVRS-Q-G

SUNDRY NOTICES AND REPORTS ON WELLS

(DO NOT USE THIS FORM FOR PROPOSALS TO DRILL OR TO DEEPEN OR PLUG BACK TO A DIFFERENT RESERVOIR. USE "APPLICATION FOR PERMIT" (FORM C-101) FOR SUCH PROPOSALS.)

1. Type of Well: Oil Well ☒ Gas Well ☐ Other

2. Name of Operator

LEGACY RESERVES OPERATING LP

3. Address of Operator

PO BOX 10848, MIDLAND, TX 79702

4. Well Location

Unit Letter A : 990 feet from the NORTH line and 660 feet from the EAST lineSection 31 Township 24S Range 37E NMPM County LEA

11. Elevation (Show whether DR, RKB, RT, GR, etc.)

3241' GR

12. Check Appropriate Box to Indicate Nature of Notice, Report or Other Data

NOTICE OF INTENTION TO:

PERFORM REMEDIAL WORK ☐ PLUG AND ABANDON ☒TEMPORARILY ABANDON ☐ CHANGE PLANS ☐PULL OR ALTER CASING ☐ MULTIPLE COMPL ☐DOWNHOLE COMMINGLE ☐CLOSED-LOOP SYSTEM ☒OTHER: ☐E-PERMITTING <SWD INJECTION>CONVERSION _____ RBDMS _____RETURN TO _____ TA _____CSNG _____ ENVIRO _____ CHG LOC _____INT TO P&A _____ P&A NR _____ P&A R _____OTHER: _____

13. Describe proposed or completed operations. (Clearly state all pertinent details, and give pertinent dates, including estimated date of starting any proposed work). SEE RULE 19.15.7.14 NMAC. For Multiple Completions: Attach wellbore diagram of proposed completion or recompletion.

Plan to plug and abandon well.

See attached P&A procedure along with current and proposed wellbore diagrams.

The Oil Conservation Division

MUST BE NOTIFIED 24 Hours

Prior to the beginning of operations

575-393-6161 ext 120

Spud Date:

Rig Release Date:

I hereby certify that the information above is true and complete to the best of my knowledge and belief.

SIGNATURE

TITLE REGULATORY TECH

DATE 09/09/2015

Type or print name LAURA PINA

E-mail address: lpina@legacylp.com

PHONE: 432-689-5200

For State Use Only

APPROVED BY:

TITLE

Dist. Supervisor

DATE

9/14/2015

Conditions of Approval (if any):

SEP 15 2015

PROCEDURE TO PLUG AND ABANDON
Langlie Jal Unit #2
Langlie Mattix (7-Rivers, & Queen) Field
Lea County, New Mexico
6/19/15
AFE# 615033

GENERAL WELL DATA

- GL 3240.5'
- 8-5/8" – 24# surface csg @ 802' w/560 sxs. TOC @ surface
- 4-1/2" – 14# prod. csg @ 3850' w/1350 sxs. TOC @ surface
- TD @ 3850'
- PBTD @ 3818'
- 7-Rivers perfs: 3324'-3495'
- Queen Perfs: 3496'-3548'

OBJECTIVE: *Plug and Abandon Well.*

PROCEDURE

1. Hold Safety Meeting. High concentrations of H2S may be present. MIRU plugging equipment.
2. Dig out cellar. Kill well if necessary and ND WH, remove any tubing joints, and NU BOP.
3. PU work string and RIH w/ CIBP and set @ 3274'.
4. Circulate well with mud.
5. Set 350' cmt plug (2924'-3274') on top of CIBP w/ 27 sxs. *- PRESSURE TEST CSG.*
6. PU to 1400' and set 300' cmt plug (~~1100'~~-1400') w/ ~~23~~ ²⁵ sxs. WOC and tag.
7. PU to 852' and set 100' cmt plug (~~752'~~-852') w/ ~~10~~ ²⁵ sxs. WOC and tag.
8. PU to 350' and set 350' cmt plug to surface w/ 27 sxs.
9. RDMO plugging equipment.
10. ND BOP
11. Cut off wellhead and weld on marker.

PREPARED BY: _____ R Peña Jr. _____

DATE: 6-19-15

APPROVED BY: _____

DATE: _____

WELLBORE SCHEMATIC AND HISTORY			
CURRENT COMPLETION SCHEMATIC		LEASE NAME Langlie Jal Unit	WELL NO. 2
		STATUS: Inj Producer Oil	API# 30-025-24837
		LOCATION: 990 FNL & 660 FEL, Sec 31, T - 24S, R - 37E; Lee County, New Mexico	
		SPUD DATE: 09/07/74 TD 3850 KB DF	
		INT. COMP. DATE: 10/05/74 PBTD 3818 GL GR 3240.5'	
<div>Surface Csg Hole Size: 12 1/4" CSG Size: 8 5/8" Set @ 802' Cmt: 560 sx Cl C Circ to Surf</div> <div>Production Csg. Hole Size: 7 7/8" in Csg. Size: 4 1/2 in Set @ 3580 ft Sxs Cmt: 1350 TOC @ Surface</div>		GEOLOGICAL DATA	
		ELECTRIC LOGS:	
		CORES, DST'S or MUD LOGS:	
		HYDROCARBON BEARING ZONE DEPTH TOPS:	
		Yates @ 2959' 7-Rivers @ 3185' Queen @ 3496'	
		CASING PROFILE	
		SURFACE 8 5/8" - 24#, J-55 set @ 802' Cmt'd w/ 560 sxs - TOC - Circulated.	
		PROD. 4 1/2" 14# H-40 set @ 3,850'. Cemented with 1350 sx Class C. Circulated	
		CURRENT PERFORATION DATA	
		CSG. PERFS: OPEN HOLE : 5-Oct-74 Perf'd from 3324'-26', 3350'-60', 3372'-85', 3424'-28', 3452'-58', 3516', 3530', & 3544'-48', 1 jhpf, 47 holes.	
		TUBING DETAIL ROD DETAIL	
		WELL HISTORY SUMMARY	
		5-Oct-74 Perf'd from 3324'-26', 3350'-60', 3372'-85', 3424'-28', 3452'-58', 3516', 3530', & 3544'-48', 1 jhpf, 47 holes. Ran 5 1/2" casing and cemented. Perf'd f/ 3465'-3472', 3478'-3506', 3522'-3533', & 3538'-3548'. 56 feet. Acid with Acidized with 1897 gals 15% NEFE HCl acid. Frac with 30,000 gals gelled fluid sand laden fluid with 30,000# 20/40 mesh sand and 9,000# rock salt. IP 53 BOPD & 40 BWPD & GAS TSTM..	
		8-May-77 POOH with production string. Acidized perforations with 2,000 gals 15% in four 500 gals stages.	
		31-Oct-88 T&A Well. POOH laying down with production string. GIH with 4 1/2" CIBP and set at 3274' above perfs. Pressure test casing to 300 psig. Circulate hole with inhibited packer fluid.	
		26-Dec-95 Squeezed perfs 3324'-3385'. Perf Queen f/ 3,400'-3,526'. Acidized. Return to production.	
		4-Jan-11 Form C-103 filed in 1/4/11 with OCD shows well as shut in.	
		Note: The well was to be acidized & retore to production by July 1, 2011.	
PBTD: 3818 ft TD: 3850 ft OH ID: 7 7/8 in		PREPARED BY: Domingo Carrizales	
		UPDATED: 23-Mar-12	

Field: **Langlie Mattix (7-Rivers & Queen)**

Location:	
Footage:	990 FNL & 660 FEL
Section:	31, T - 24S, R - 37E
Block:	
Survey:	
County:	Lea
Lat:	
Long:	
Elevations:	
GR:	3240.5'
DF:	
KB:	
KB Calc:	
ck w/log?	

PROPOSED

Date	History
05-Oct-74	Perf'd from 3324'-26', 3350'-60', 3372'-85', 3424'-28', 3452'-58', 3516', 3530', and 3544'-48', 1 jhpf, 47 holes. Ran 5 1/2" casing and cemented. Perf'd f/ 3465'-3472', 3478'-3506', 3522'-3533', & 3538'-3548'. 56 feet. Acidized with 1897 gals 15% NEFE HCl acid. Frac with 30,000 gals gelled fluid sand laden fluid with 30,000# 20/40 mesh sand and 9,000# rock salt. IP 53 BOPD & 40 BWPD & GAS TSTM.
8-May-77	POOH with production string. Acidized perforations with 2,000 gals 15% in 500 gals stages.
31-Oct-88	T&A Well. POOH laying down with production string. GIH with 4 1/2" CIBP and set at 3274' above perfs. Pressure test casing to 300 psig. Circulate hole with inhibited packer fluid.
26-Dec-95	Squeezed perfs 3324'-3385'. Perf Queen f/ 3,400'-3,526'. Acidized. Return to production.
4-Jan-11	Form C-103 filed in 1/4/11 with OCD shows well as shut in. Note: The well was to be acidized & restored to production by July 1, 2011.

Tubing Detail (top to bottom)			
Joints	Description	Footage	Depth

Rod Detail (top to bottom)			
Rods	Description	Footage	Depth

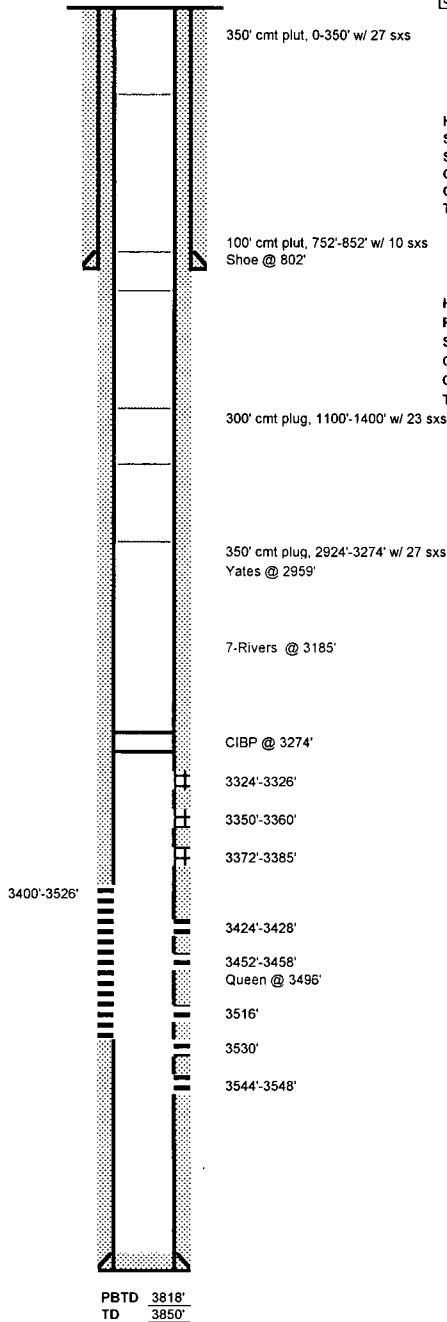
Pumping Unit:
Updated: RG 7/11/2014

Langlie Jal Unit #2

Reservoir: **Langlie Jal**

Well ID Info:	2
API No:	30-025-24837
Spud Date:	9/7/1974

Wellbore Diagram



Hole Size:	12-1/4"
Surf. Csg:	8-5/8" - 24#, J-55
Set @	802'
Cement w/	560 sxs
Circ:	Yes
TOC:	Surface

Hole Size:	7-7/8"
Prod. Csg:	4-1/2" - 14#, H-40
Set @	3850'
Cmt'd w/	1350 sxs Class C
Circ:	Yes
TOC:	Surface