

DISTRICT I  
1625 N. French Dr., Hobbs, NM 88240  
Phone: (575) 393-6161 Fax: (575) 393-0720  
DISTRICT II  
811 S. First St., Artesia, NM 88210  
Phone: (575) 748-1283 Fax: (575) 748-9720  
DISTRICT III  
1000 Rio Brazos Road, Aztec, NM 87410  
Phone: (505) 334-6178 Fax: (505) 334-6170  
DISTRICT IV  
1220 S. St. Francis Dr., Santa Fe, NM 87505  
Phone: (505) 476-3460 Fax: (505) 476-3462

State of New Mexico  
Energy, Minerals & Natural Resources Department

OIL CONSERVATION DIVISION

1220 South St. Francis Dr.  
Santa Fe, New Mexico 87505

Form C-102

Revised August 1, 2011

Submit one copy to appropriate  
District Office

SEP 21 2015

RECEIVED ☐ AMENDED REPORT

WELL LOCATION AND ACREAGE DEDICATION PLAT

API Number <b>30-025-42794</b>	Pool Code <b>979124</b>	Pool Name <b>WLC-025 67-07 3243225C; Lwr Bone Spr</b>
Property Code <b>315267</b>	Property Name <b>CHARRO FEDERAL</b>	Well Number <b>1H</b>
OGRID No. <b>005380</b>	Operator Name <b>XTO ENERGY</b>	Elevation <b>3584'</b>

Surface Location

UL or lot No.	Section	Township	Range	Lot Idn	Feet from the	North/South line	Feet from the	East/West line	County
M	23	24-S	32-E		170	SOUTH	660	WEST	LEA

Bottom Hole Location If Different From Surface

UL or lot No.	Section	Township	Range	Lot Idn	Feet from the	North/South line	Feet from the	East/West line	County
D	23	24-S	32-E		200	NORTH	660	WEST	LEA

Dedicated Acres <b>160</b>	Joint or Infill	Consolidation Code	Order No.
-------------------------------	-----------------	--------------------	-----------

NO ALLOWABLE WILL BE ASSIGNED TO THIS COMPLETION UNTIL ALL INTERESTS HAVE BEEN CONSOLIDATED OR A NON-STANDARD UNIT HAS BEEN APPROVED BY THE DIVISION

	<b>GEODETIC COORDINATES</b> NAD 27 NME BOTTOM HOLE LOCATION Y=440668.0 N X=710930.0 E LAT.=32.209674° N LONG.=103.651353° W	<b>GEODETIC COORDINATES</b> NAD 83 NME BOTTOM HOLE LOCATION Y=440726.7 N X=752114.5 E LAT.=32.209798° N LONG.=103.651832° W
	<b>LAST TAKE POINT</b> Y=440538.0 N X=710930.7 E LAT.=32.209317° N LONG.=103.651353° W	<b>LAST TAKE POINT</b> Y=440596.8 N X=752115.2 E LAT.=32.209440° N LONG.=103.651832° W
	<b>CORNER COORDINATES TABLE</b> NAD 27 NME A - Y=440860.5 N, X=710269.1 E B - Y=440875.5 N, X=711592.6 E C - Y=435595.7 N, X=711623.0 E D - Y=435581.0 N, X=710298.0 E	
	<b>CORNER COORDINATES TABLE</b> NAD 83 NME A - Y=440919.2 N, X=751453.5 E B - Y=440934.2 N, X=752777.0 E C - Y=435654.3 N, X=752805.6 E D - Y=435639.5 N, X=751482.6 E	
	<b>GEODETIC COORDINATES</b> NAD 27 NME FIRST TAKE POINT Y=436458.1 N X=710953.1 E LAT.=32.196178° N LONG.=103.651364° W	<b>GEODETIC COORDINATES</b> NAD 83 NME FIRST TAKE POINT Y=436516.7 N X=752137.8 E LAT.=32.198225° N LONG.=103.651843° W
	<b>SURFACE LOCATION</b> Y=435758.3 N X=710957.0 E LAT.=32.196302° N LONG.=103.651366° W	<b>SURFACE LOCATION</b> Y=435816.9 N X=752141.6 E LAT.=32.196302° N LONG.=103.651845° W

**OPERATOR CERTIFICATION**

I hereby certify that the information herein is true and complete to the best of my knowledge and belief, and that this organization either owns a working interest or unleased mineral interest in the land including the proposed bottom hole location or has a right to drill this well at this location pursuant to a contract with an owner of such mineral or working interest, or to a voluntary pooling agreement or a compulsory pooling order heretofore entered by the division.

Stephanie Rabidue 7-10-14  
Signature Date

Stephanie Rabidue  
Printed Name

stephanie\_rabidue@xtoenergy.com  
E-mail Address

**SURVEYOR CERTIFICATION**

I hereby certify that the well location shown on this plat was plotted from field notes of actual surveys made by me or under my supervision, and that the same is true and correct to the best of my belief.

APRIL 18, 2014

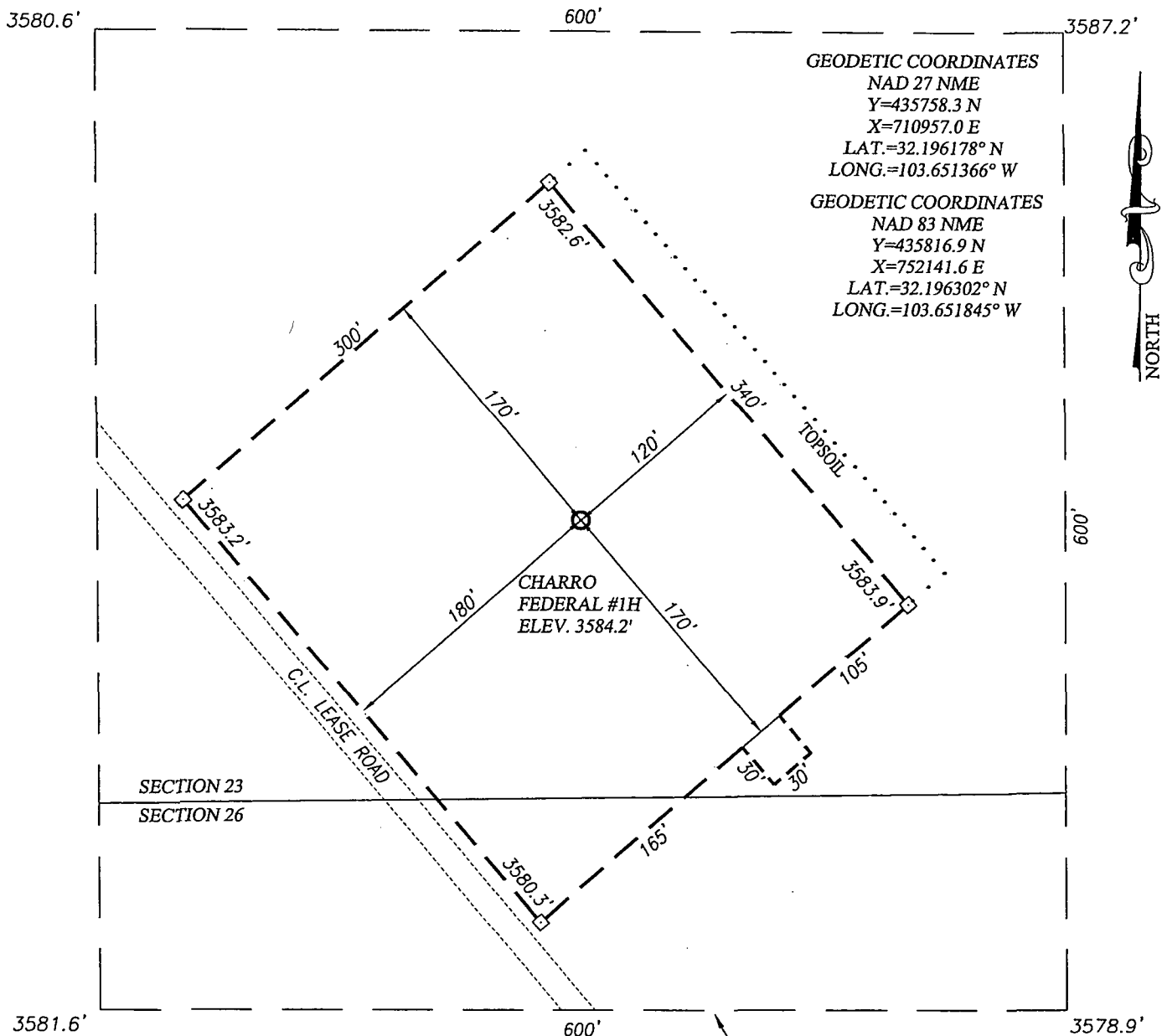
Date of Survey

Signature & Seal of Professional Surveyor:

Certificate Number 3239 Gary G. Eidson 12641  
Ronald J. Eidson 3239

ACK JWSC W.O.: 14.11.0400

SEP 23 2015

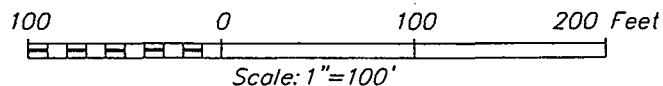


NOTE:  
1) SEE "LOCATION VERIFICATION MAP"  
FOR PROPOSED ROAD LOCATION.

ARCHEOLOGICAL SURVEY BOUNDARY

#### DIRECTIONS TO CHARRO FEDERAL #1H:

FROM THE INTERSECTION OF ST. HWY. 128 AND CO. RD. J1  
(ORLA ROAD), GO EAST ON ST. HWY. 128 APPROX. 0.6 MILES.  
TURN RIGHT AND GO SOUTH APPROX. 0.7 MILES. TURN LEFT  
AND FOLLOW WINDING ROAD SOUTH-SOUTHEAST APPROX. 0.7  
MILES TO THE LOCATION.



# XTO ENERGY

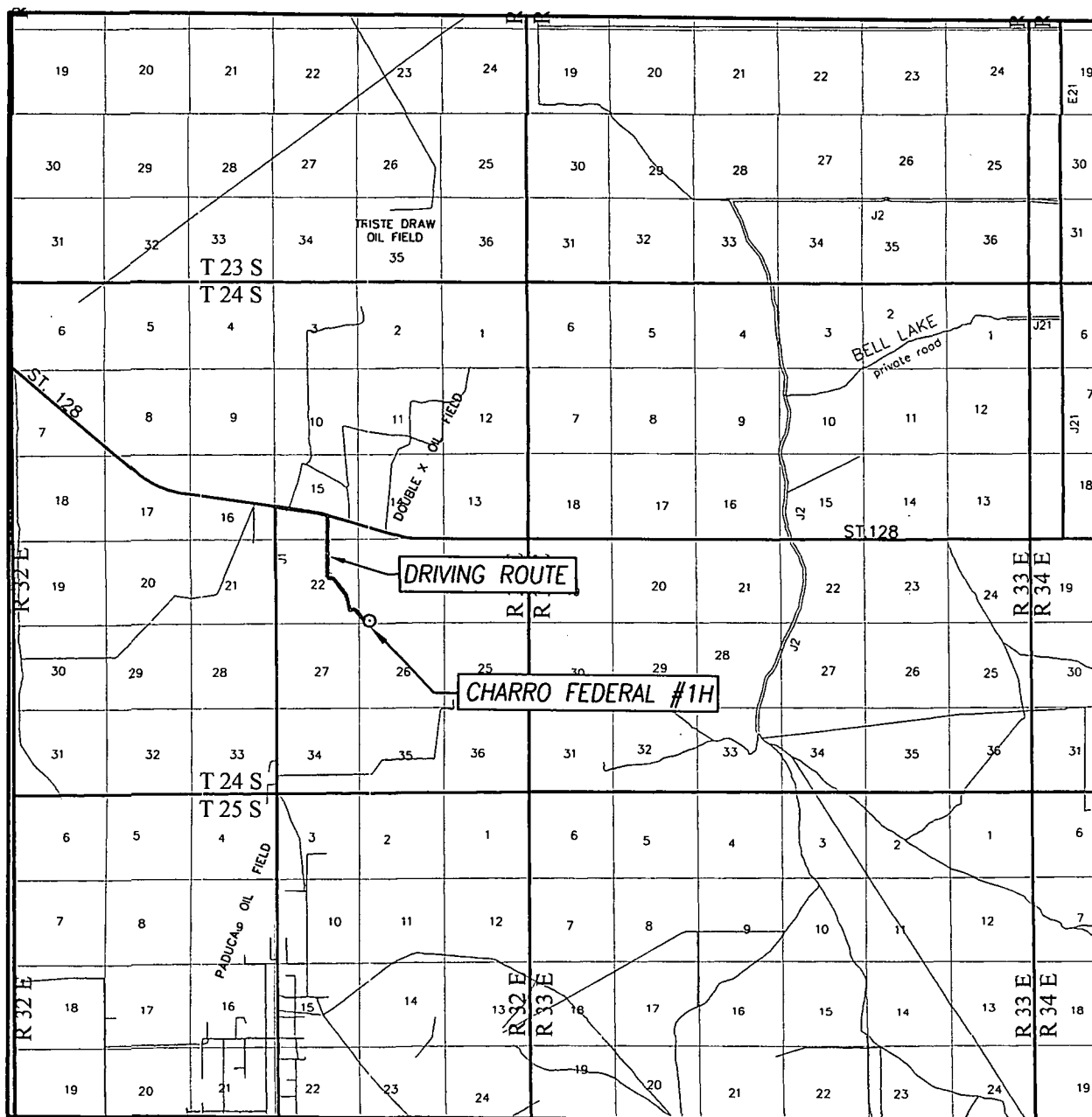
CHARRO FEDERAL #1H WELL  
LOCATED 170 FEET FROM THE SOUTH LINE  
AND 660 FEET FROM THE WEST LINE OF SECTION 23,  
TOWNSHIP 24 SOUTH, RANGE 32 EAST, N.M.P.M.,  
LEA COUNTY, NEW MEXICO



PROVIDING SURVEYING SERVICES  
SINCE 1946  
**JOHN WEST SURVEYING COMPANY**  
412 N. DAL PASO HOBBS, N.M. 88240  
(575) 393-3117 www.jwsc.biz  
TBPLS# 10021000

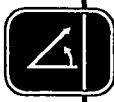
Survey Date: 4/18/14	CAD Date: 5/25/14	Drawn By: ACK
W.O. No.: 14110400	Rev: .	Rel. W.O.: Sheet 1 of 1

# VICINITY MAP



SCALE: 1" = 2 MILES  
DRIVING ROUTE: SEE LOCATION VERIFICATION MAP

SEC. 23 TWP. 24-S RGE. 32-E  
SURVEY N.M.P.M.  
COUNTY LEA STATE NEW MEXICO  
DESCRIPTION 170' FSL & 660' FWL  
ELEVATION 3584'  
OPERATOR XTO ENERGY  
LEASE CHARRO FEDERAL

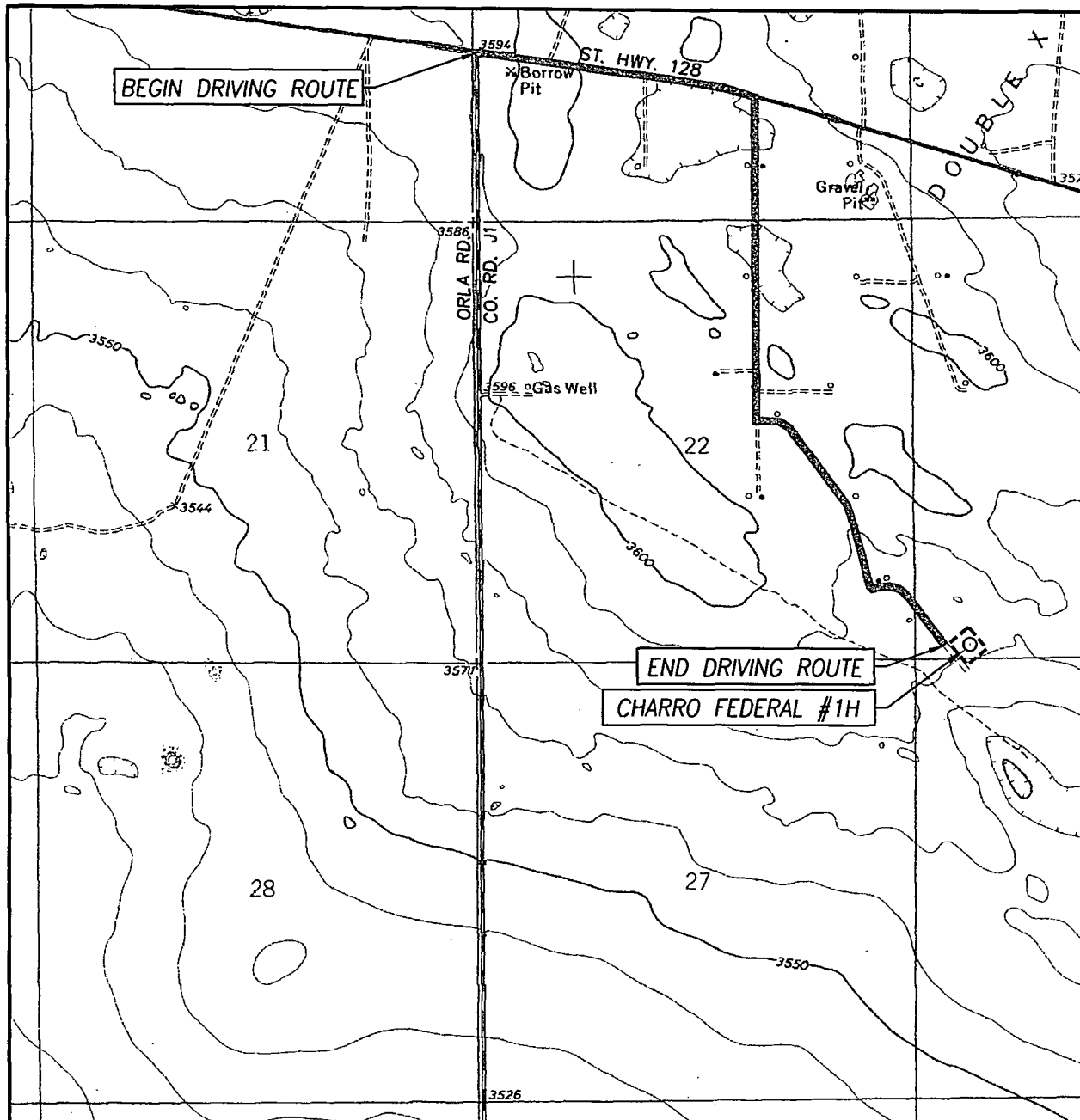


PROVIDING SURVEYING SERVICES  
SINCE 1946

**JOHN WEST SURVEYING COMPANY**

412 N. DAL PASO HOBBS, N.M. 88240  
(575) 393-3117 [www.jwsc.biz](http://www.jwsc.biz)  
TBPLS# 10021000

# LOCATION VERIFICATION MAP



SCALE: 1" = 2000'

CONTOUR INTERVAL:  
PADUCA BREAKS NW, N.M. - 10'

SEC. 23 TWP. 24-S RGE. 32-E

SURVEY N.M.P.M.

COUNTY LEA STATE NEW MEXICO

DESCRIPTION 170' FSL & 660' FWL

ELEVATION 3584'

OPERATOR XTO ENERGY

LEASE CHARRO FEDERAL

U.S.G.S. TOPOGRAPHIC MAP  
PADUCA BREAKS NW, N.M.

## DIRECTIONS TO CHARRO FEDERAL #1H:

FROM THE INTERSECTION OF ST. HWY. 128 AND CO. RD. J1 (ORLA ROAD), GO EAST ON ST. HWY. 128 APPROX. 0.6 MILES. TURN RIGHT AND GO SOUTH APPROX. 0.7 MILES. TURN LEFT AND FOLLOW WINDING ROAD SOUTH-SOUTHEAST APPROX. 0.7 MILES TO THE LOCATION.



PROVIDING SURVEYING SERVICES  
SINCE 1946  
**JOHN WEST SURVEYING COMPANY**  
412 N. DAL PASO HOBBS, N.M. 88240  
(575) 393-3117 www.jwsc.biz  
TBPLS# 10021000