

HOBBS OCD

District I
1625 N. French Dr., Hobbs, NM 88240
Phone: (575) 393-6161 Fax: (575) 393-0720

District II
811 S First St., Artesia, NM 88210
Phone: (575) 748-1283 Fax: (575) 748-9720

District III
1000 Rio Brazos Road, Aztec, NM 87410
Phone: (505) 334-6178 Fax: (505) 334-6170

District IV
1220 S. St. Francis Dr., Santa Fe, NM 87505
Phone: (505) 476-3460 Fax: (505) 476-3462

State of New Mexico
Energy, Minerals & Natural Resources Department
OIL CONSERVATION DIVISION
1220 South St. Francis Dr.
Santa Fe, NM 87505

SEP 21 2015
RECEIVED

Form C-102
Revised August 1, 2011
Submit one copy to appropriate
District Office

☐ AMENDED REPORT

WELL LOCATION AND ACREAGE DEDICATION PLAT

¹ API Number 30-025 42803	² Pool Code 97838	³ Pool Name Jennings; Upper Bone Spring Shale
⁴ Property Code 315271	⁵ Property Name SD WE 23 FED P5	⁶ Well Number 2H
⁷ OGRID No. 4323	⁸ Operator Name CHEVRON U.S.A. INC.	⁹ Elevation 3156'

¹⁰ Surface Location

U.I. or lot no.	Section	Township	Range	Lot Idn	Feet from the	North/South line	Feet from the	East/West line	County
M	14	26 SOUTH	32 EAST, N.M.P.M.		10'	SOUTH	698'	WEST	LEA

¹¹ Bottom Hole Location If Different From Surface

U.I. or lot no.	Section	Township	Range	Lot Idn	Feet from the	North/South line	Feet from the	East/West line	County
M	23	26 SOUTH	32 EAST, N.M.P.M.		280'	SOUTH	990'	WEST	LEA

¹² Dedicated Acres 160	¹³ Joint or Infill	¹⁴ Consolidation Code	¹⁵ Order No.
--------------------------------------	-------------------------------	----------------------------------	-------------------------

No allowable will be assigned to this completion until all interests have been consolidated or a non-standard unit has been approved by the division.

<p>SD WE 23 FED P5 2H WELL</p> <p>X= 711,292 NAD 27 Y= 377,312 LAT. 32.035512 LONG. 103.651478</p> <p>X= 752,480 NAD83 Y= 377,369 LAT. 32.035637 LONG. 103.651947</p> <p>ELEVATION +3156' NAVD 88</p>	<p>PROPOSED BOTTOM HOLE LOCATION</p> <p>X= 711,619 NAD 27 Y= 372,232 LAT. 32.021541 LONG. 103.650529</p> <p>X= 752,806 NAD83 Y= 372,289 LAT. 32.021666 LONG. 103.650997</p>	<p>CORNER COORDINATES TABLE (NAD 27)</p> <p>A - Y=378633.33, X=710590.73 B - Y=378643.30, X=711921.56 C - Y=377296.47, X=710594.39 D - Y=377306.99, X=711926.30 E - Y=371945.53, X=710630.44 F - Y=371953.82, X=711958.74</p>		<p>¹⁷ OPERATOR CERTIFICATION</p> <p>I hereby certify that the information contained herein is true and complete to the best of my knowledge and belief, and that this organization either owns a working interest or released mineral interest in the land including the proposed bottom hole location or has a right to drill this well at this location pursuant to a contract with an owner of such a mineral or working interest, or to a voluntary pooling agreement or a compulsory pooling order heretofore entered by the division.</p> <p>Cindy Herrera-Morillo 4-27-15 Signature Date Cindy Herrera-Morillo Printed Name Cherreraamorillo@chevron.com E-mail Address</p> <p>¹⁸ SURVEYOR CERTIFICATION</p> <p>I hereby certify that the well location shown on this plat was plotted from field notes of actual surveys made by me or under my supervision, and that the same is true and correct to the best of my belief.</p> <p>10.29.14 Date of Survey Signature and Seal of Professional Surveyor Wm. J. Daniel III NEW MEXICO REGISTERED PROFESSIONAL SURVEYOR 15078 Certificate Number #15078</p>
---	---	---	--	---

SEP 23 2015

SD WE 23 FED P5 1H
TWN 26S - RNG 32E - SEC 14 and SEC 23
LEA, CO NM
Surface and Bottom Hole Locations - 1 Mile Radius

Exhibit 3

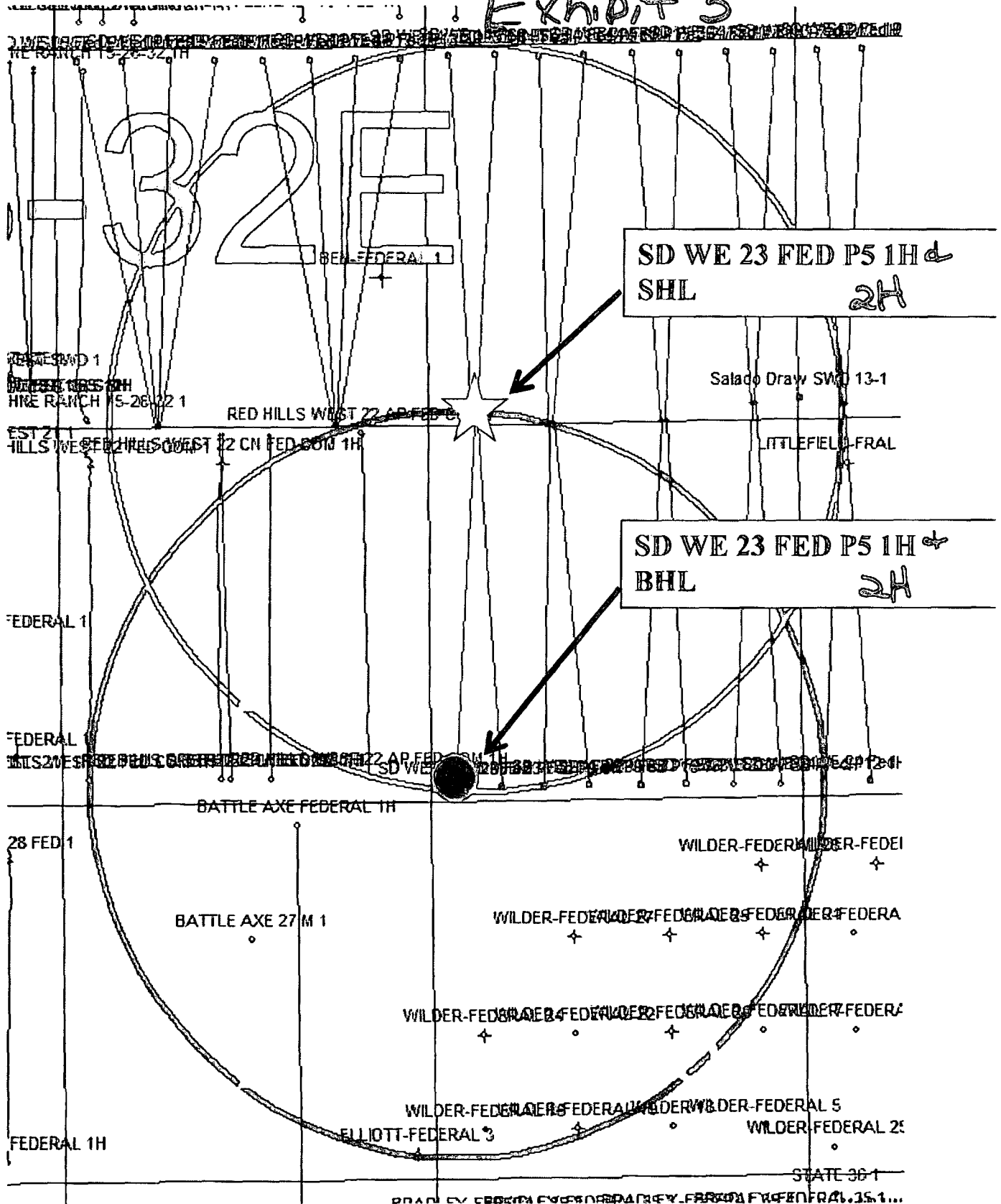
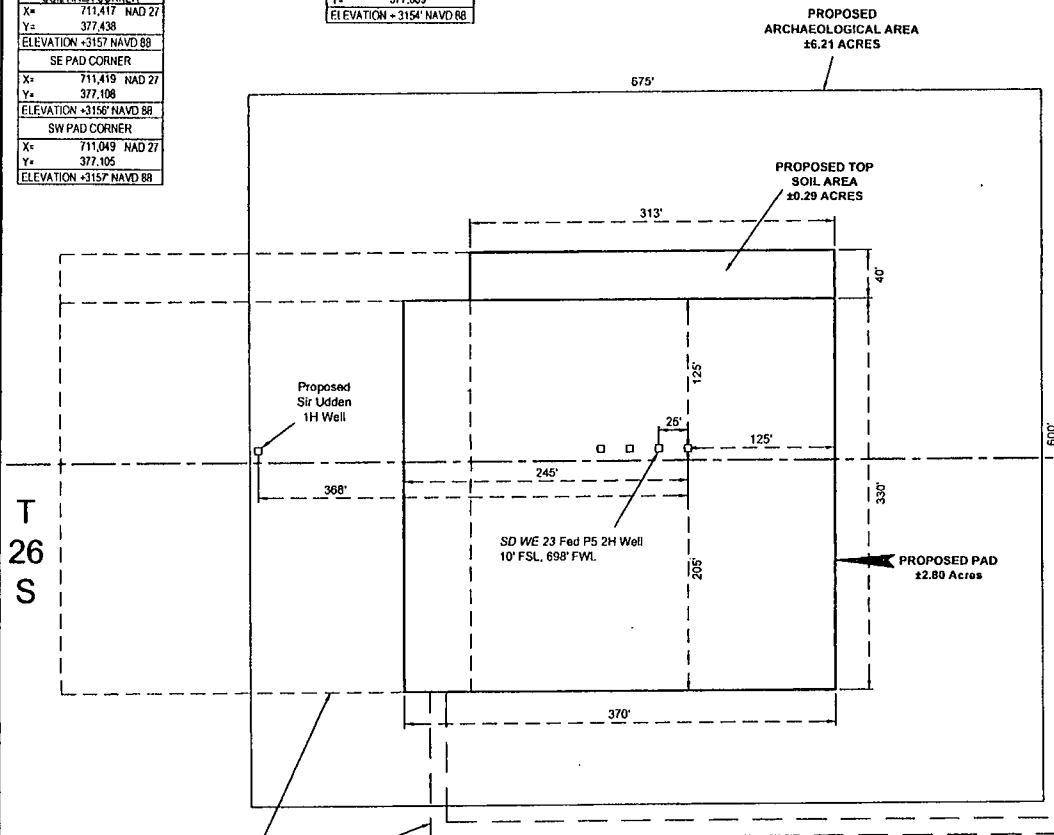


Exhibit 6

R 32 E

Sec. 14
Bureau of Land
Management

SD WE 23 FED P5 2H WELL	10W TOP SOIL AREA CORNER	NW ARCH AREA CORNER
X= 711,257 NAD 27	X= 711,103 NAD 27	X= 710,915 NAD 27
Y= 377,312	Y= 377,475	Y= 377,609
IAT 32.035512	ELEVATION + 3157' NAVD 88	ELEVATION + 3158' NAVD 88
LONG 103.651478	NE TOP SOIL AREA CORNER	NE ARCH AREA CORNER
X= 752,280 NAD83	X= 711,416 NAD 27	X= 711,590 NAD 27
Y= 377,369	Y= 377,478	Y= 377,615
IAT 32.035637	ELEVATION + 3157' NAVD 88	ELEVATION + 3159' NAVD 88
LONG 103.651947	SW TOP SOIL AREA CORNER	SE ARCH AREA CORNER
ELEVATION + 3156' NAVD 88	X= 711,103 NAD 27	X= 711,595 NAD 27
NW PAD CORNER	Y= 377,436	Y= 377,015
X= 711,047 NAD 27	ELEVATION + 3158' NAVD 88	ELEVATION + 3154' NAVD 88
Y= 377,435		SW ARCH AREA CORNER
ELEVATION + 3157' NAVD 88		X= 710,920 NAD 27
NE PAD CORNER & SE TOP SOIL AREA CORNER		Y= 377,009
X= 711,417 NAD 27		ELEVATION + 3154' NAVD 88
Y= 377,438		
ELEVATION + 3157' NAVD 88		
SE PAD CORNER		
X= 711,419 NAD 27		
Y= 377,108		
ELEVATION + 3156' NAVD 88		
SW PAD CORNER		
X= 711,049 NAD 27		
Y= 377,105		
ELEVATION + 3157' NAVD 88		



Sec. 23
Bureau of Land
Management

FOR THE EXCLUSIVE USE OF
CHEVRON U.S.A. INC.
I, WM. J. DANIEL III, Registered Professional
Land Surveyor, do hereby state this plat is true
and correct to the best of my knowledge.



NOTE:
Please be advised, that while reasonable efforts are made to locate and verify pipelines and anomalies using our standard pipeline locating equipment, it is impossible to be 100 % effective. As such, we advise using caution when performing work as there is a possibility that pipelines and other hazards, such as fiber optic cables, PVC pipelines, etc. may exist undetected on site.

NOTE:
Many states maintain information centers that establish links between those who dig (excavators) and those who own and operate underground facilities (operators). It is advisable and in most states, law, for the contractor to contact the center for assistance in locating and marking underground utilities. For guidance, New Mexico One Call, www.nmonocall.org

DISCLAIMER: At this time, C.H. Fenstermaker & Associates, LLC has not performed nor was asked to perform any type of engineering, hydrological modeling, flood plain, or "No Rise" certification analyses, including but not limited to determining whether the project will impact flood hazards in connection with federal/FEMA, state, and/or local laws, ordinances and regulations. Accordingly, Fenstermaker makes no warranty or representation of any kind as to the foregoing issues, and persons or entities using this information shall do so at their own risk

LEGEND			
---	Section Line		
□	Proposed Well		
---	Proposed Road		

CHEVRON U.S.A. INC.
PROPOSED PAD
SD WE 23 FED P5 2H WELL
SECTIONS 14 & 23, T26S-R32E
LEA COUNTY, NEW MEXICO



135 Regency Sq. Lafayette, LA 70508
Ph: 337-337-2200 Fax: 337-337-3209
www.fenstermaker.com

Scale: 1"=100'

100' 0 50' 100'

DRAWN BY: TPD		REVISIONS	
PROJ. MGR: VHV	No.	DATE:	REVISED BY:
DATE: OCTOBER 15, 2014	No.	DATE:	REVISED BY:
FILENAME: T:\2014\2146721\DWG\SD WE 23 Fed P5 2H_SUP.dwg			

Exhibit 7

R 32 E

Sec. 14

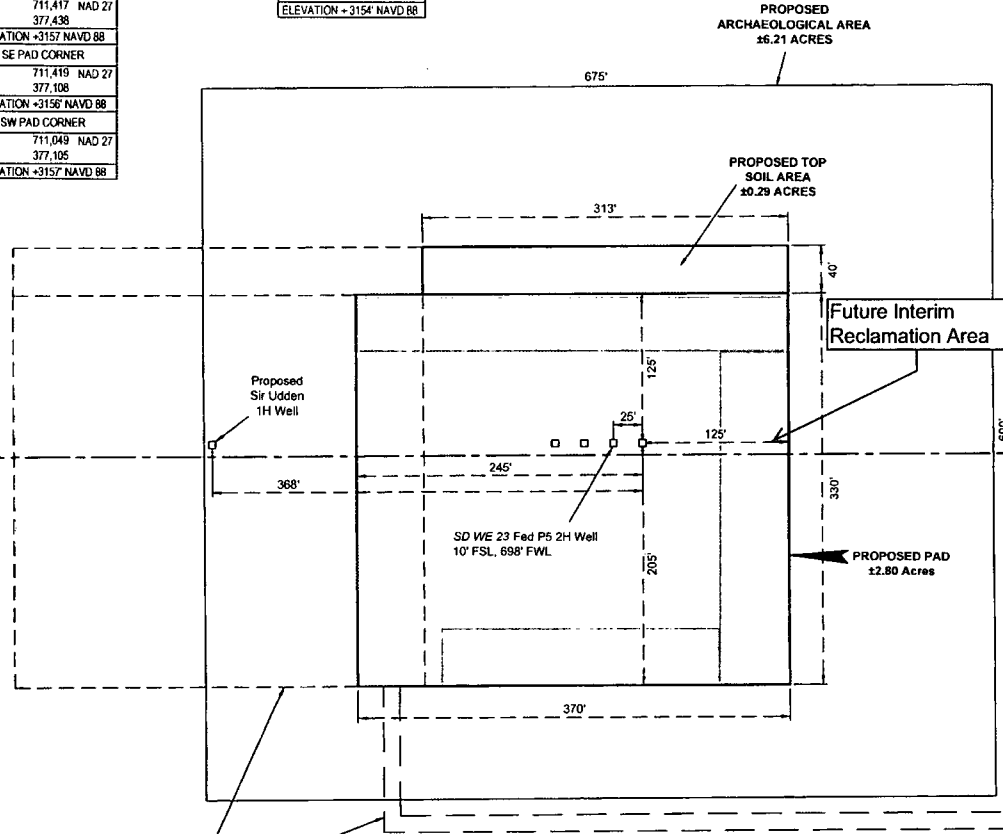
Bureau of Land Management

SD WE 23 FED P5 2H WELL	
X=	711,292 NAD 27
Y=	377,312
LAT.	32.035512
LONG.	103.651478
X=	752,480 NAD83
Y=	377,368
LAT.	32.035637
LONG.	103.651957
ELEVATION +3152 NAVD 88	
NW PAD CORNER	
X=	711,847 NAD 27
Y=	377,435
ELEVATION +3157 NAVD 88	
NE PAD CORNER & SE TOP SOIL AREA CORNER	
X=	711,417 NAD 27
Y=	377,438
ELEVATION +3157 NAVD 88	
SE PAD CORNER	
X=	711,419 NAD 27
Y=	377,108
ELEVATION +3156 NAVD 88	
SW PAD CORNER	
X=	711,049 NAD 27
Y=	377,105
ELEVATION +3157 NAVD 88	

NW TOP SOIL AREA CORNER	
X=	711,103 NAD 27
Y=	377,475
ELEVATION +3157 NAVD 88	
NE TOP SOIL AREA CORNER	
X=	711,416 NAD 27
Y=	377,478
ELEVATION +3157 NAVD 88	
SW TOP SOIL AREA CORNER	
X=	711,103 NAD 27
Y=	377,436
ELEVATION +3158 NAVD 88	

NW ARCH. AREA CORNER	
X=	710,915 NAD 27
Y=	377,609
ELEVATION +3158 NAVD 88	
NE ARCH. AREA CORNER	
X=	711,590 NAD 27
Y=	377,615
ELEVATION +3159 NAVD 88	
SE ARCH. AREA CORNER	
X=	711,595 NAD 27
Y=	377,015
ELEVATION +3154 NAVD 88	
SW ARCH. AREA CORNER	
X=	710,920 NAD 27
Y=	377,009
ELEVATION +3154 NAVD 88	

T 26 S



Sec. 23

Bureau of Land Management

FOR THE EXCLUSIVE USE OF
CHEVRON U.S.A. INC.
I, WM. J. DANIEL III, Registered Professional
Land Surveyor, do hereby state this plat is true
and correct to the best of my knowledge.



NOTE:
Please be advised, that while reasonable efforts are made to locate and verify pipelines and anomalies using our standard pipeline locating equipment, it is impossible to be 100% effective. As such, we advise using caution when performing work as there is a possibility that pipelines and other hazards, such as fiber optic cables, PVC pipelines, etc. may exist undetected on site.

NOTE:
Many states maintain information centers that establish links between those who dig (excavators) and those who own and operate underground facilities (operators). It is advisable and in most states, law, for the contractor to contact the center for assistance in locating and marking underground utilities. For guidance, New Mexico One Call, www.nmonecall.org.

DISCLAIMER: At this time, C.H. Fenstermaker & Associates, LLC has not performed nor was asked to perform any type of engineering, hydrological modeling, flood plain, or "No Rise" certification analyses, including but not limited to determining whether the project will impact flood hazards in connection with federal/FEMA, state, and/or local laws, ordinances and regulations. Accordingly, Fenstermaker makes no warranty or representation of any kind as to the foregoing issues, and persons or entities using this information shall do so at their own risk.

LEGEND			
---	Section Line		
□	Proposed Well		
---	Proposed Road		

CHEVRON U.S.A. INC.
PROPOSED PAD
SD WE 23 FED P5 2H WELL
SECTIONS 14 & 23, T26S-R32E
LEA COUNTY, NEW MEXICO



135 Regency Sq. Lafayette, LA 70508
Ph. 337-237-2200 Fax. 337-232-3209
www.fenstermaker.com

Scale: 1"=100'
100' 0 50' 100'

DRAWN BY: TPD		REVISIONS	
PROJ. MGR.: VHV	No.	DATE:	REVISED BY:
DATE: OCTOBER 15, 2014	No.	DATE:	REVISED BY:
FILENAME: T:\2014\214672\1DVGSD WE 23 Fed P5 2H_SUP.dwg			

**Boone Arch Services of NM, LLC
506 E. Chapman Road
Carlsbad, NM 88220**



November 13, 2014

Chevron U.S.A, Inc.
15 Smith Road
Midland, TX 79705
Attn: Stephen Tarr

Re: SD WE 23 Fed P5 #1H & #2H and SD WE 14 Fed P5 #1H & #2H

Dear Mr. Tarr,

Records searches were conducted on November 4, 2014, for the proposed SD WE 23 Fed P5 #1H, SD WE 23 Fed P5 #2H, SD WE 14 Fed P5 #1H and SD WE 14 Fed P5 #2H well pad in Township 26 South (T26S), Range 32 East (R32E), Sections 14 and 23. All wells will be on a single pad.

Sources consulted included Bureau of Land Management Carlsbad Field Office (BLM/CFO) GIS database and the online GIS database maintained by the New Mexico Historic Preservation Division, Archaeological Resource Management Section, in Santa Fe, NM. These records indicate archaeological survey coverage of the project area (NMCRIS #s: 63533, 126220, and 130167). No archaeological sites have been found in the project area and only one site has been previously recorded within a 1/4-mile radius.

In consultation with BLM archaeologist Stacy Galassini, it was determined that no additional survey is required. The project is recommended for approval without further archaeological survey as currently staked. A copy of this letter will be forwarded to the BLM Carlsbad archaeologist.

Legal Description: T26S R32E Section 14 S½ SW SW and 23 N½ NW NW, Lea County, New Mexico

Map Reference: U.S.G.S. 7.5' Paduca Breaks West 32103-A6

Sincerely,

Rebecca Hill
Owner/Principal Investigator
Boone Arch Services of NM, LLC

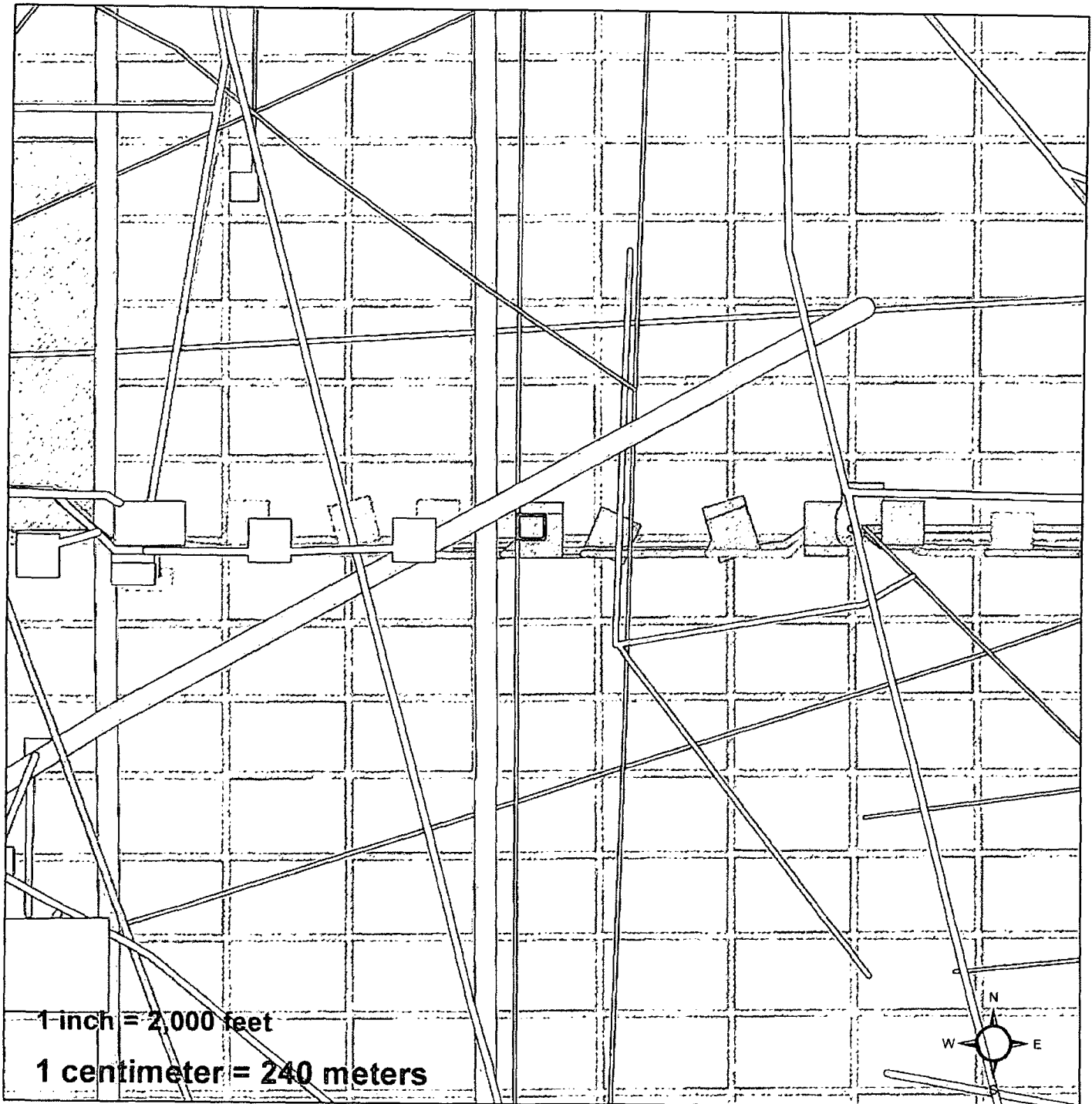
Encl: (1) project map
(2) NMCRIS Map

Office: 575-885-1352





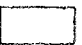



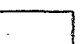
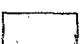


Cell: 575-361-1353

Fax: 575-887-7667

Chevron U.S.A. Inc.
SD WE 23 Fed P5 #1H & #2H and SD WE
14 Fed P5 #1H & #2H



Legend

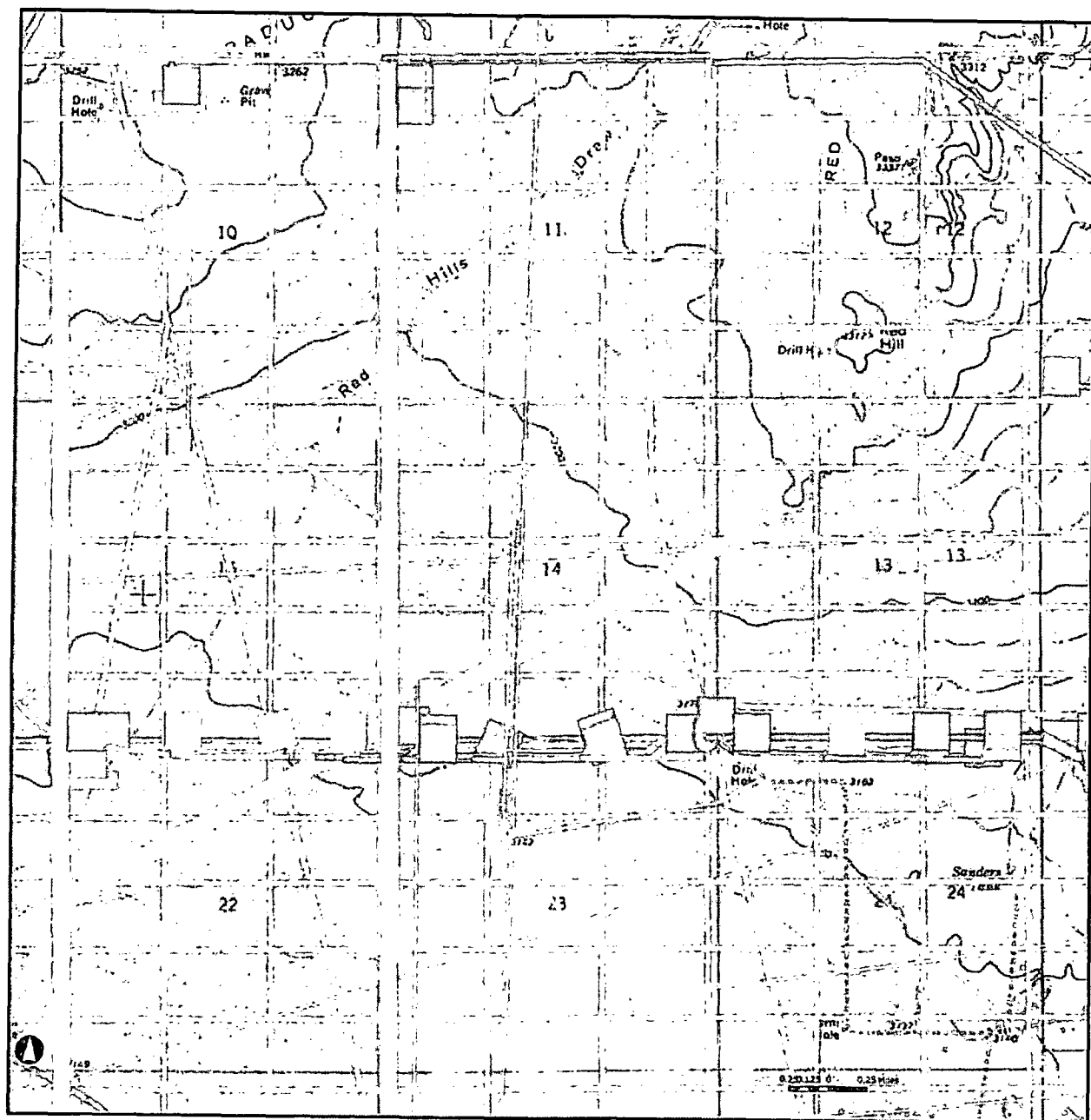
	WellPad		BLM		NPS
	Arch Sites		BOR		Private
			DOE		NM State Trust Lands
			Forest Service		NM State Game & Fish
			BOI		NM State Park

Paduca Breaks West 32103-A6
T26S R32E S14, 23

1:24,000

BASNM 10-14-15

10-14-15 ARMS Map



PLSS

- ☐ Building Labels
- ☐ Object Labels
- ☐ Linear Resource Labels
- ☐ Historic Structure Labels
- ☐ Historic Structures (Edit)

Objects

- ☐ Not Defined
 - ☐ Proposed
 - ☐ Approved
- ## Linear Resources
- ☐ Not Defined
 - ☐ Proposed
 - ☐ Approved
- ## District Labels

Archaeological Surveys

- ☐ Not Defined
- ☐ Proposed
- ☐ Approved

Highways

- ☐ Primary Limited Access or Interstate
- ☐ Primary US and State Highways
- ☐ Secondary State and County
- ☐ Local - Rural

CHEVRON
SD WE 23 FEDERAL P5 #2H
NMNM118723,
SECTION 14, T26S, R32E
SHL 10' FSL & 698' FWL,

SECTION 23, T26S, R32E
BHL 180' FSL & 990' FWL

EXHIBITS:

Exhibit 1 -- Existing Roads (APD map)

Exhibit 2 -- Survey Plat: New or Reconstructed Roads Map: if road is outside 600' x 600'.

Exhibit 3 -- 1-mile Radius Map

Exhibit 4 -- Location of Existing and/or Proposed Production Facilities (Tank Battery)

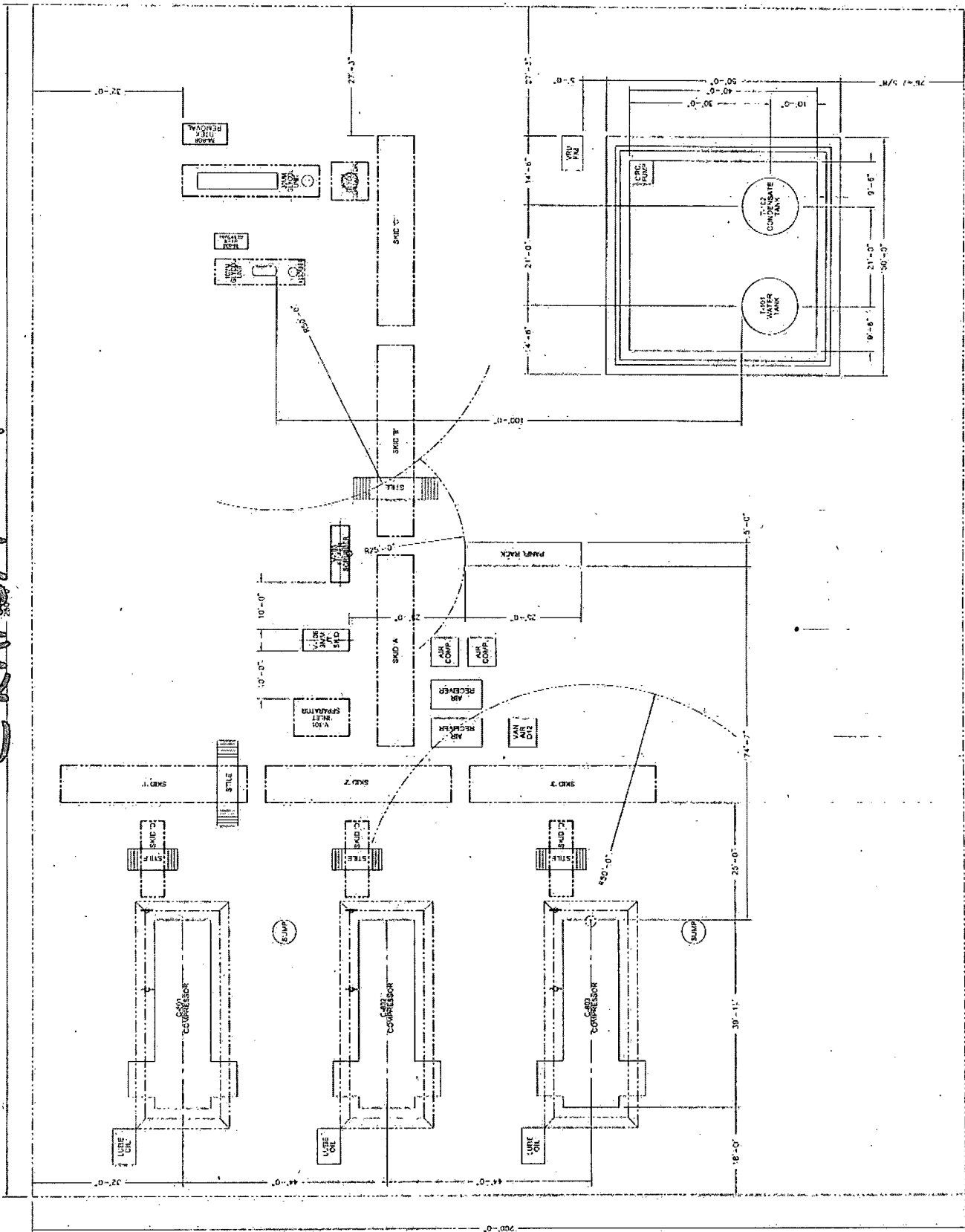
Exhibit 5 -- Survey Plat: Infrastructure: roads, pipelines, power lines, frac pond

Exhibit 6 -- Rig Layout: Well Site Layout Map / Diagram

C-102 doesn't need an exhibit number – nothing should refer back to the state form.

Need Exhibit 1, 3, 4 - need location name added to battery layout, & 5 - this will include the facility pad, production and power.

Exhibit 4



Sec. 14



Flowlines - Approx. 1,950 ft.
Gas Lift P/L - Approx. 2,319 ft
SWD Transfer P/L - Approx. 3,990 ft.

Sir Udden 1H
14 26 33
10' FSL, 330' FWL

5th Well Pad
10' FSL, 623' FWL

Salado Draw SWD
13 26 32
290' FSL, 10' FWL

7th Well Pad
Westernmost Well
215' FSL, 698' FEL

Cattle Guard
across road

Powerline -
Approx. 4,733 ft

Ditch (culvert
to be added)

Access Road

CALL FOR CROSS
ROAD LITTLE FIELD
ON 40
P&S map

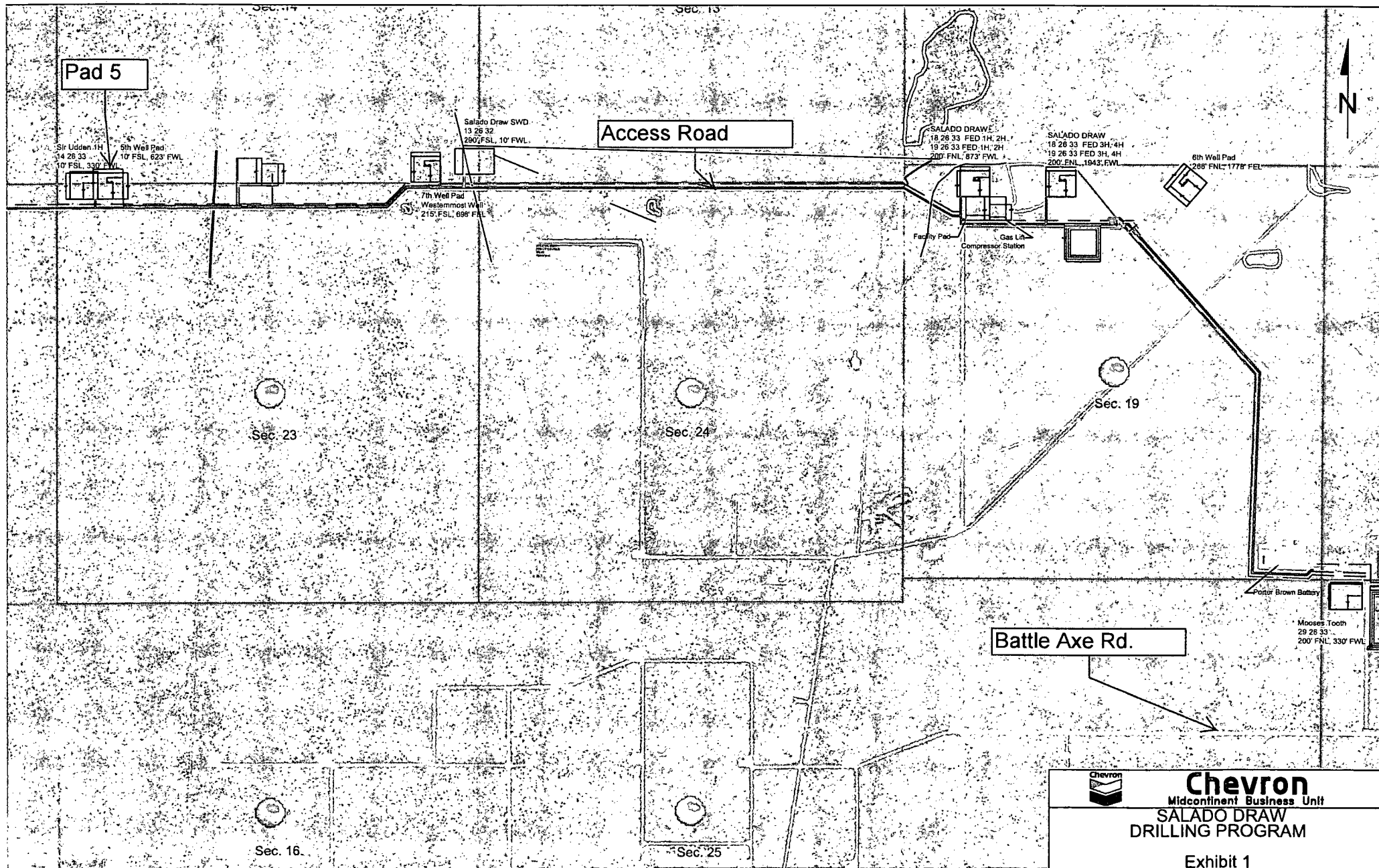


Chevron

Midcontinent Business Unit

**SALADO DRAW
DRILLING PROGRAM**

EXHIBIT 5



Chevron
Midcontinent Business Unit
**SALADO DRAW
DRILLING PROGRAM**