

District I  
1625 N. French Dr., Hobbs, NM 88240  
Phone: (575) 393-6161 Fax: (575) 393-0720  
District II  
511 S. First St., Artesia, NM 88210  
Phone: (575) 748-1283 Fax: (575) 748-9720  
District III  
1000 Rio Brazos Road, Aztec, NM 87410  
Phone: (505) 334-6178 Fax: (505) 334-6170  
District IV  
1220 S. St. Francis Dr., Santa Fe, NM 87505  
Phone: (505) 476-3460 Fax: (505) 476-3462

State of New Mexico  
Energy, Minerals & Natural Resources Department  
OIL CONSERVATION DIVISION  
1220 South St. Francis Dr.  
Santa Fe, NM 87505

HOBBS OCD

Form C-102

Revised August 1, 2011

Submit one copy to appropriate

District Office

RECEIVED

☐ AMENDED REPORT

WELL LOCATION AND ACREAGE DEDICATION PLAT

<sup>1</sup> API Number	<sup>2</sup> Pool Code	<sup>3</sup> Pool Name
<sup>1</sup> Property Code	<sup>5</sup> Property Name EDEL-WEISSE 28-21 STATE COM	<sup>4</sup> Well Number 1H
<sup>2</sup> OGRID No. 6137	<sup>4</sup> Operator Name DEVON ENERGY PRODUCTION COMPANY, L.P.	<sup>9</sup> Elevation 3754.4

<sup>10</sup> Surface Location

UL or lot no.	Section	Township	Range	Lot Idn	Feet from the	North/South line	Feet from the	East/West line	County
E	28	17 S	37 E		2440	NORTH	400	WEST	LEA

<sup>11</sup> Bottom Hole Location If Different From Surface

UL or lot no.	Section	Township	Range	Lot Idn	Feet from the	North/South line	Feet from the	East/West line	County
D L	21	17 S	37 E		2350	SOUTH	400	WEST	LEA

<sup>12</sup> Dedicated Acres	<sup>13</sup> Joint or Infill	<sup>14</sup> Consolidation Code	<sup>15</sup> Order No.
160			

No allowable will be assigned to this completion until all interests have been consolidated or a non-standard unit has been approved by the division.

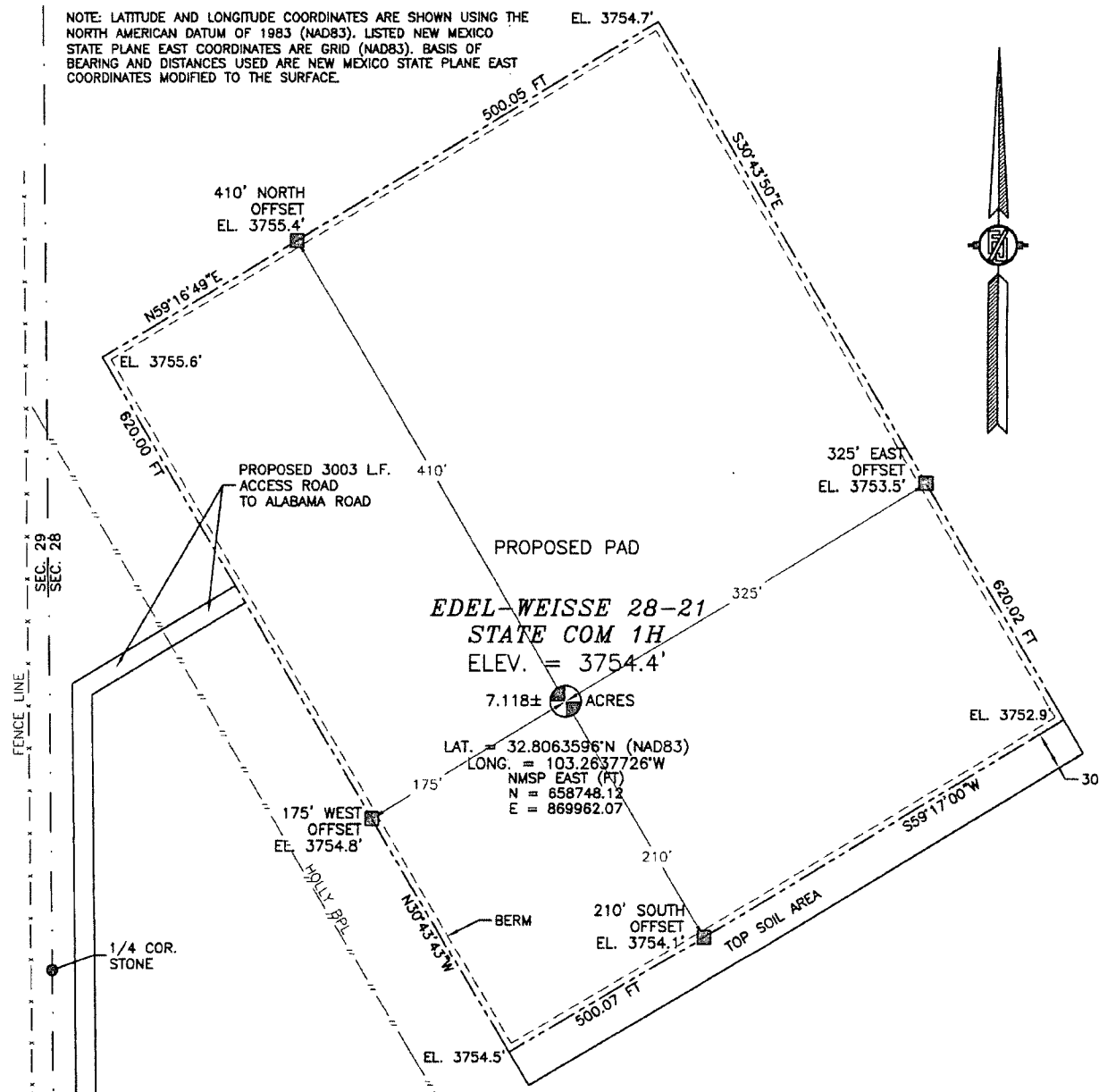
<p>NW CORNER SEC. 21 LAT. = 32.8276166°N LONG. = 103.2651231°W NMSP EAST (FT) N = 666478.13 E = 869468.98</p> <p>W/4 CORNER SEC. 21 LAT. = 32.8203419°N LONG. = 103.2651015°W NMSP EAST (FT) N = 663831.34 E = 869502.34</p> <p>SECTION CORNER LAT. = 32.8130872°N LONG. = 103.2650800°W NMSP EAST (FT) N = 661184.56 E = 869535.71</p> <p>W/4 CORNER SEC. 28 LAT. = 32.8058052°N LONG. = 103.2650738°W NMSP EAST (FT) N = 658542.75 E = 869564.30</p> <p>SW CORNER SEC. 28 LAT. = 32.7985352°N LONG. = 103.2650577°W NMSP EAST (FT) N = 655897.30 E = 869595.97</p>		<p>1/4 CORNER SEC. 21 LAT. = 32.8275828°N LONG. = 103.2565129°W NMSP EAST (FT) N = 666492.67 E = 872114.09</p> <p>NOTE: LATITUDE AND LONGITUDE COORDINATES ARE SHOWN USING THE NORTH AMERICAN DATUM OF 1983 (NAD83). LISTED NEW MEXICO STATE PLANE EAST COORDINATES ARE GRID (NAD83). BASIS OF BEARING AND DISTANCES USED ARE NEW MEXICO STATE PLANE EAST COORDINATES MODIFIED TO THE SURFACE.</p> <p>BOTTOM OF HOLE LAT. = 32.8195223°N LONG. = 103.2637974°W NMSP EAST (FT) N = 663537.19 E = 869906.02</p> <p>SEC. 21</p> <p>QUARTER CORNER SCALED</p> <p>SEC. 28</p> <p>SURFACE LOCATION 400'</p> <p>EDEL-WEISSE 28-21 STATE COM, 1H ELEV. = 3754.4' LAT. = 32.8063596°N (NAD83) LONG. = 103.2637726°W NMSP EAST (FT) N = 658748.12 E = 869962.07</p> <p>S/4 CORNER SEC. 28 SCALED</p>		<p>NE CORNER SEC. 21 LAT. = 32.8276163°N LONG. = 103.2479049°W NMSP EAST (FT) N = 666531.91 E = 874758.28</p> <p>E/4 CORNER SEC. 21 LAT. = 32.8202921°N LONG. = 103.2478978°W NMSP EAST (FT) N = 663867.06 E = 874787.84</p> <p>SECTION CORNER LAT. = 32.8130313°N LONG. = 103.2478829°W NMSP EAST (FT) N = 661225.34 E = 874819.53</p> <p>E/4 CORNER SEC. 28 LAT. = 32.8057578°N LONG. = 103.2477924°W NMSP EAST (FT) N = 658578.95 E = 874849.36</p> <p>SE CORNER SEC. 28 LAT. = 32.7984849°N LONG. = 103.2477924°W NMSP EAST (FT) N = 655933.02 E = 874901.88</p>		<p><sup>17</sup> OPERATOR CERTIFICATION</p> <p>I hereby certify that the information contained herein is true and complete to the best of my knowledge and belief, and that this organization either owns a working interest or unleased mineral interest in the land including the proposed bottom hole location or has a right to drill this well at this location pursuant to a contract with an owner of such a mineral or working interest, or to a voluntary pooling agreement or a compulsory pooling order heretofore entered by the division.</p> <p>Signature: <i>Tami Laird</i> Date: 8.5.15</p> <p>Printed Name: Tami Laird</p> <p>E-mail Address: tami.laird@devn.com</p> <p><sup>18</sup> SURVEYOR CERTIFICATION</p> <p>I hereby certify that the well location shown on this plat was plotted from field notes of actual surveys made by me or under my supervision, and that the same is true and correct to the best of my belief.</p> <p>Signature and Seal of Professional Surveyor: <i>Filimon E. Jaramillo</i></p> <p>Certificate Number: FILIMON E. JARAMILLO, PLS 12797</p> <p>SURVEY NO. 3590B</p>
--	--	--	--	--	--	--

SEP 25 2015

*fm*

**SECTION 28, TOWNSHIP 17 SOUTH, RANGE 37 EAST, N.M.P.M.  
LEA COUNTY, STATE OF NEW MEXICO  
SITE MAP**

NOTE: LATITUDE AND LONGITUDE COORDINATES ARE SHOWN USING THE NORTH AMERICAN DATUM OF 1983 (NAD83), LISTED NEW MEXICO STATE PLANE EAST COORDINATES ARE GRID (NAD83). BASIS OF BEARING AND DISTANCES USED ARE NEW MEXICO STATE PLANE EAST COORDINATES MODIFIED TO THE SURFACE.



012 60 120 240  
SCALE 1" = 120'

**DIRECTIONS TO LOCATION**

FROM THE INTERSECTION OF STATE HWY 18 AND COUNTY ROAD ALABAMA STREET GO WEST ON ALABAMA STREET 2.74 MILES ABOUT A MILE PAST END OF PAVEMENT TO PROPOSED ROAD ON RIGHT GO NORTH ON PROPOSED ROAD 3003 LF (0.58 MILES) TO NORTHWEST CORNER OF PROPOSED PAD

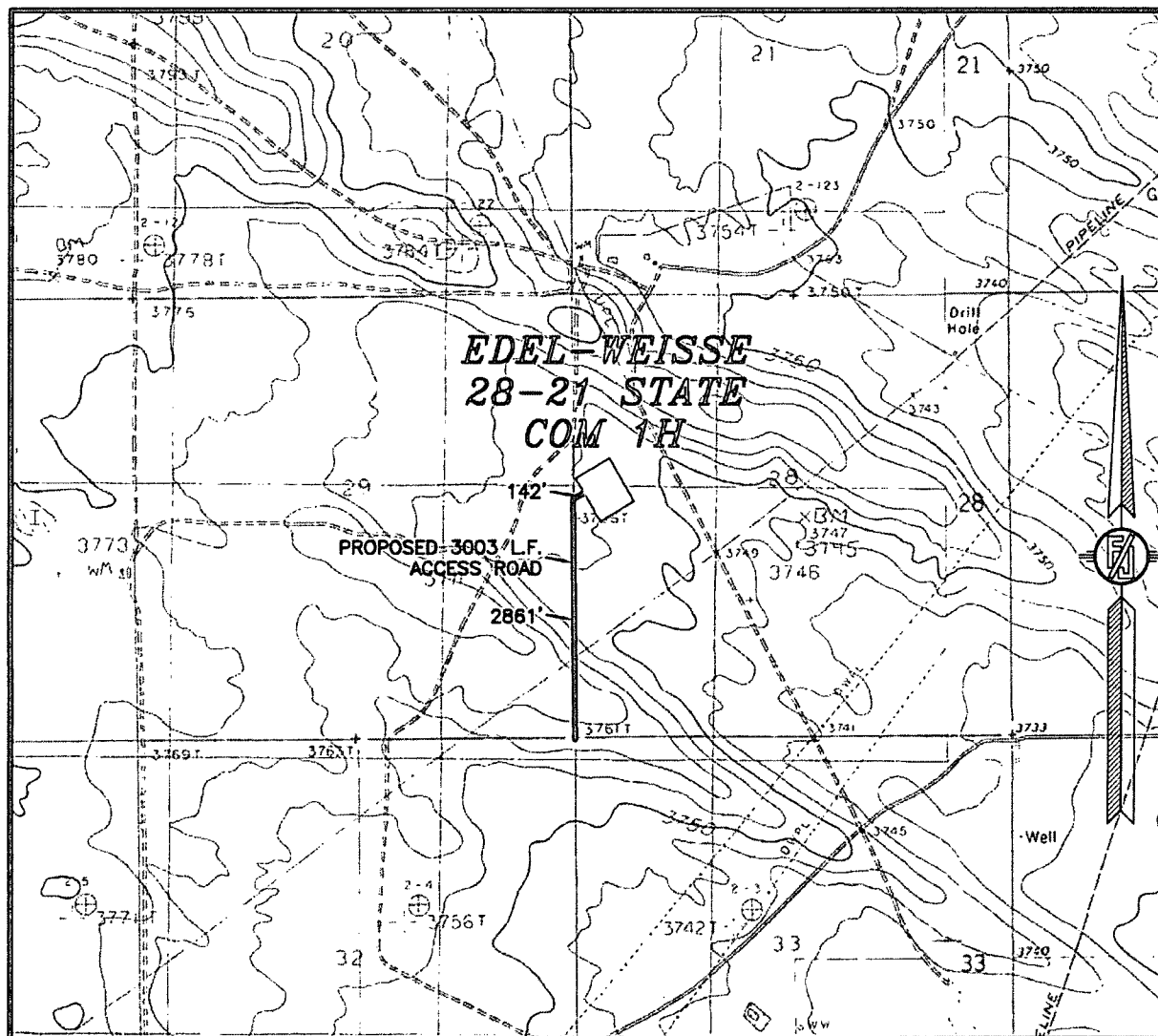
**DEVON ENERGY PRODUCTION COMPANY, L.P.  
EDEL-WEISSE 28-21 STATE COM 1H  
LOCATED 2440 FT. FROM THE NORTH LINE  
AND 400 FT. FROM THE WEST LINE OF  
SECTION 28, TOWNSHIP 17 SOUTH,  
RANGE 37 EAST, N.M.P.M.  
LEA COUNTY, STATE OF NEW MEXICO**

JULY 29, 2015

SURVEY NO. 3590B

**MADRON SURVEYING, INC.** 301 SOUTH CANAL (575) 234-3341 **CARLSBAD, NEW MEXICO**

SECTION 28, TOWNSHIP 17 SOUTH, RANGE 37 EAST, N.M.P.M.  
LEA COUNTY, STATE OF NEW MEXICO  
LOCATION VERIFICATION MAP



USGS QUAD MAP:  
LOVINGTON SE

NOT TO SCALE

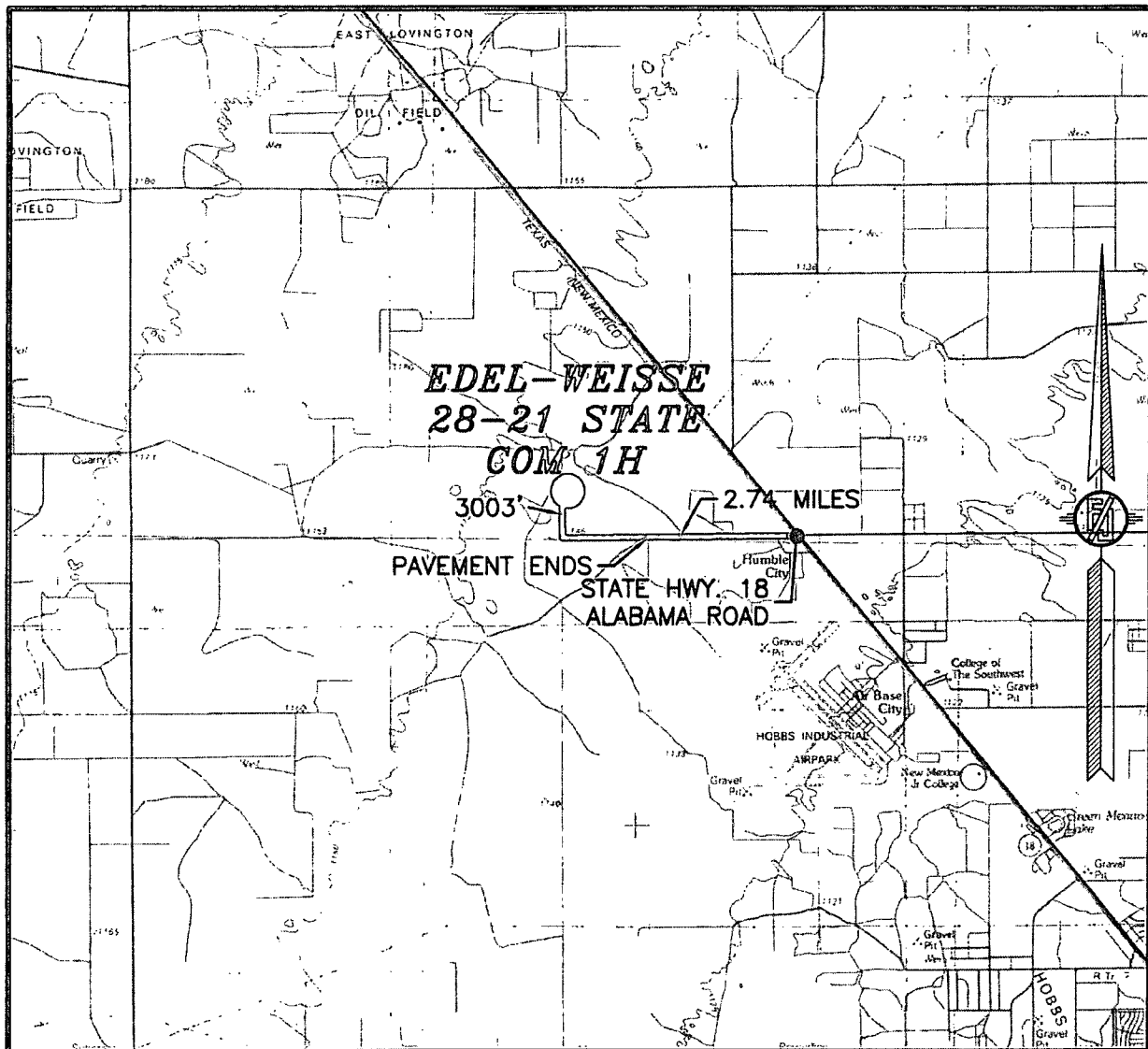
DEVON ENERGY PRODUCTION COMPANY, L.P.  
**EDEL-WEISSE 28-21 STATE COM 1H**  
LOCATED 2440 FT. FROM THE NORTH LINE  
AND 400 FT. FROM THE WEST LINE OF  
SECTION 28, TOWNSHIP 17 SOUTH,  
RANGE 37 EAST, N.M.P.M.  
LEA COUNTY, STATE OF NEW MEXICO

JULY 29, 2015

SURVEY NO. 3590B

MADRON SURVEYING, INC. 301 SOUTH CANAL CARLSBAD, NEW MEXICO  
(575) 234-3341

SECTION 28, TOWNSHIP 17 SOUTH, RANGE 37 EAST, N.M.P.M.  
LEA COUNTY, STATE OF NEW MEXICO  
VICINITY MAP



**DIRECTIONS TO LOCATION**  
FROM THE INTERSECTION OF STATE HWY 18 AND COUNTY ROAD  
ALABAMA STREET GO WEST ON ALABAMA STREET 2.74 MILES ABOUT A  
MILE PAST END OF PAVEMENT TO PROPOSED ROAD ON RIGHT GO  
NORTH ON PROPOSED ROAD 3003 LF (0.58 MILES) TO NORTHWEST  
CORNER OF PROPOSED PAD

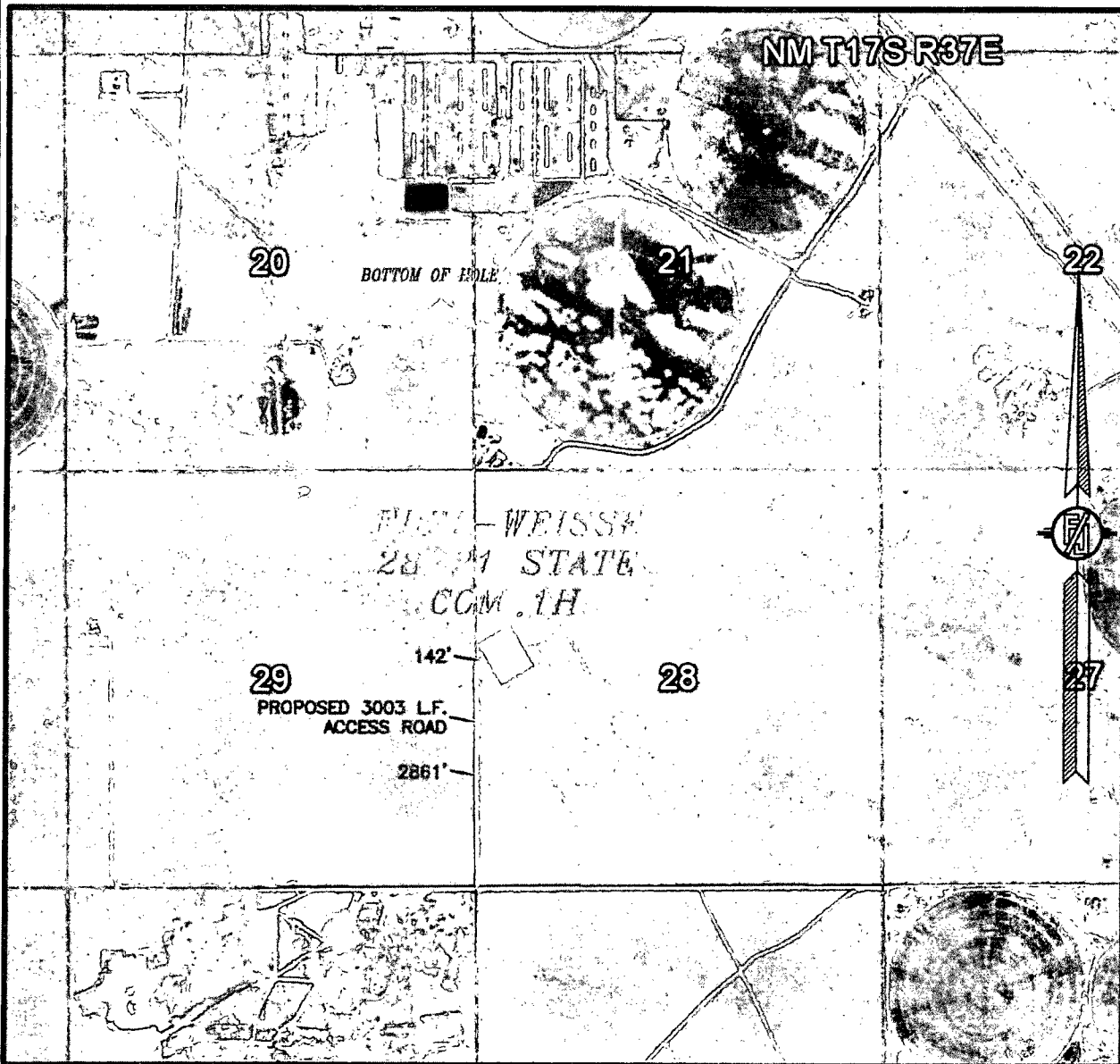
**DEVON ENERGY PRODUCTION COMPANY, L.P.**  
**EDEL-WEISSE 28-21 STATE COM 1H**  
LOCATED 2440 FT. FROM THE NORTH LINE  
AND 400 FT. FROM THE WEST LINE OF  
SECTION 28, TOWNSHIP 17 SOUTH,  
RANGE 37 EAST, N.M.P.M.  
LEA COUNTY, STATE OF NEW MEXICO

JULY 29, 2015

SURVEY NO. 3590B

MADRON SURVEYING, INC. 301 SOUTH CANAL (575) 234-3341 CARLSBAD, NEW MEXICO

SECTION 28, TOWNSHIP 17 SOUTH, RANGE 37 EAST, N.M.P.M.  
LEA COUNTY, STATE OF NEW MEXICO  
AERIAL PHOTO



NOT TO SCALE  
AERIAL PHOTO:  
GOOGLE EARTH  
FEB. 2014

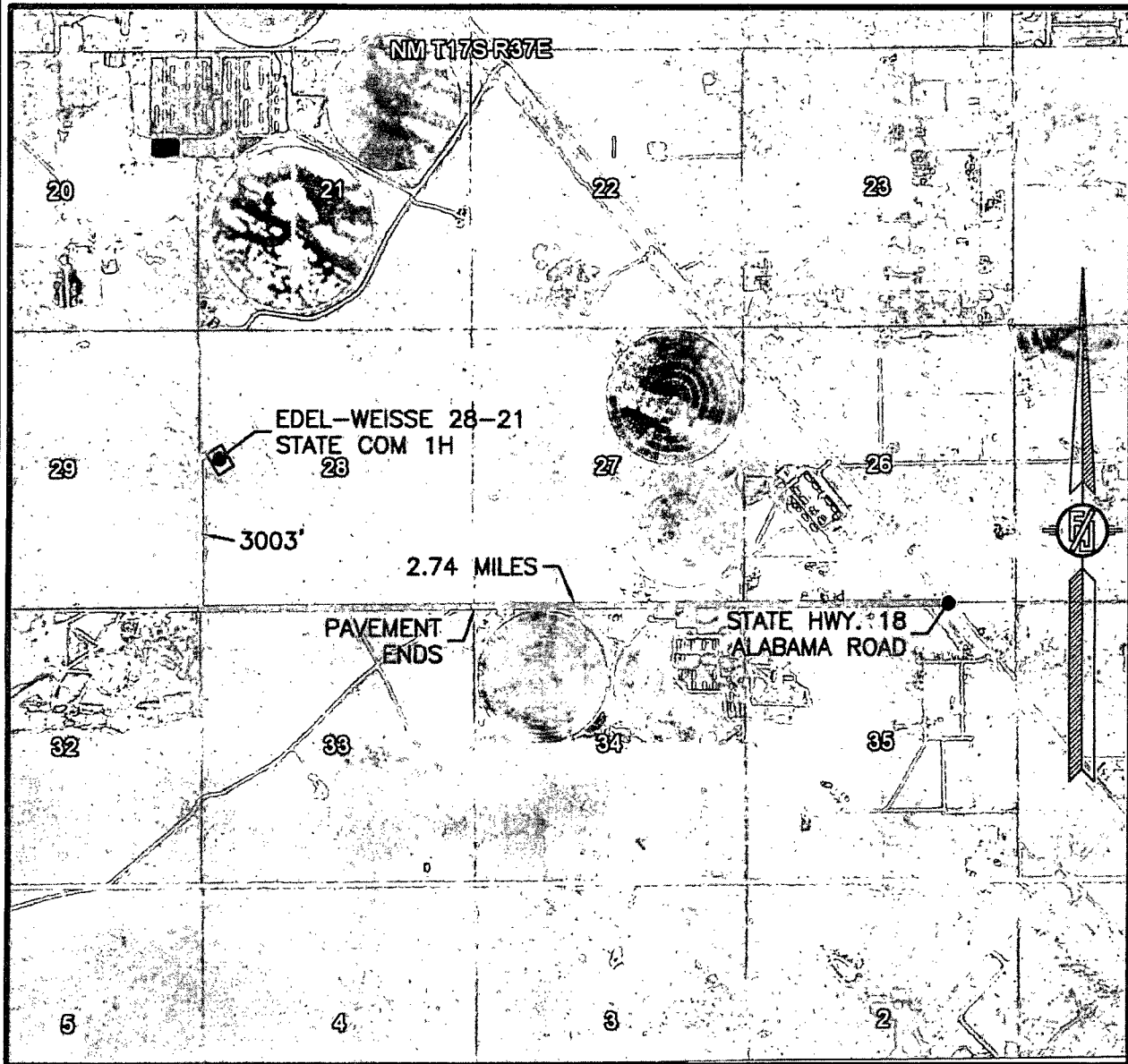
DEVON ENERGY PRODUCTION COMPANY, L.P.  
EDEL-WEISSE 28-21 STATE COM 1H  
LOCATED 2440 FT. FROM THE NORTH LINE  
AND 400 FT. FROM THE WEST LINE OF  
SECTION 28, TOWNSHIP 17 SOUTH,  
RANGE 37 EAST, N.M.P.M.  
LEA COUNTY, STATE OF NEW MEXICO

JULY 29, 2015

SURVEY NO. 3590B

MADRON SURVEYING, INC. 301 SOUTH CANAL (575) 234-3341 CARLSBAD, NEW MEXICO

SECTION 28, TOWNSHIP 17 SOUTH, RANGE 37 EAST, N.M.P.M.  
LEA COUNTY, STATE OF NEW MEXICO  
**AERIAL ACCESS ROUTE MAP**



NOT TO SCALE  
AERIAL PHOTO:  
GOOGLE EARTH  
FEB. 2014

**DEVON ENERGY PRODUCTION COMPANY, L.P.**  
**EDEL-WEISSE 28-21 STATE COM 1H**  
LOCATED 2440 FT. FROM THE NORTH LINE  
AND 400 FT. FROM THE WEST LINE OF  
SECTION 28, TOWNSHIP 17 SOUTH,  
RANGE 37 EAST, N.M.P.M.  
LEA COUNTY, STATE OF NEW MEXICO

JULY 29, 2015

SURVEY NO. 3590B

**MADRON SURVEYING, INC.** 301 SOUTH CANAL (575) 234-3341 **CARLSBAD, NEW MEXICO**