

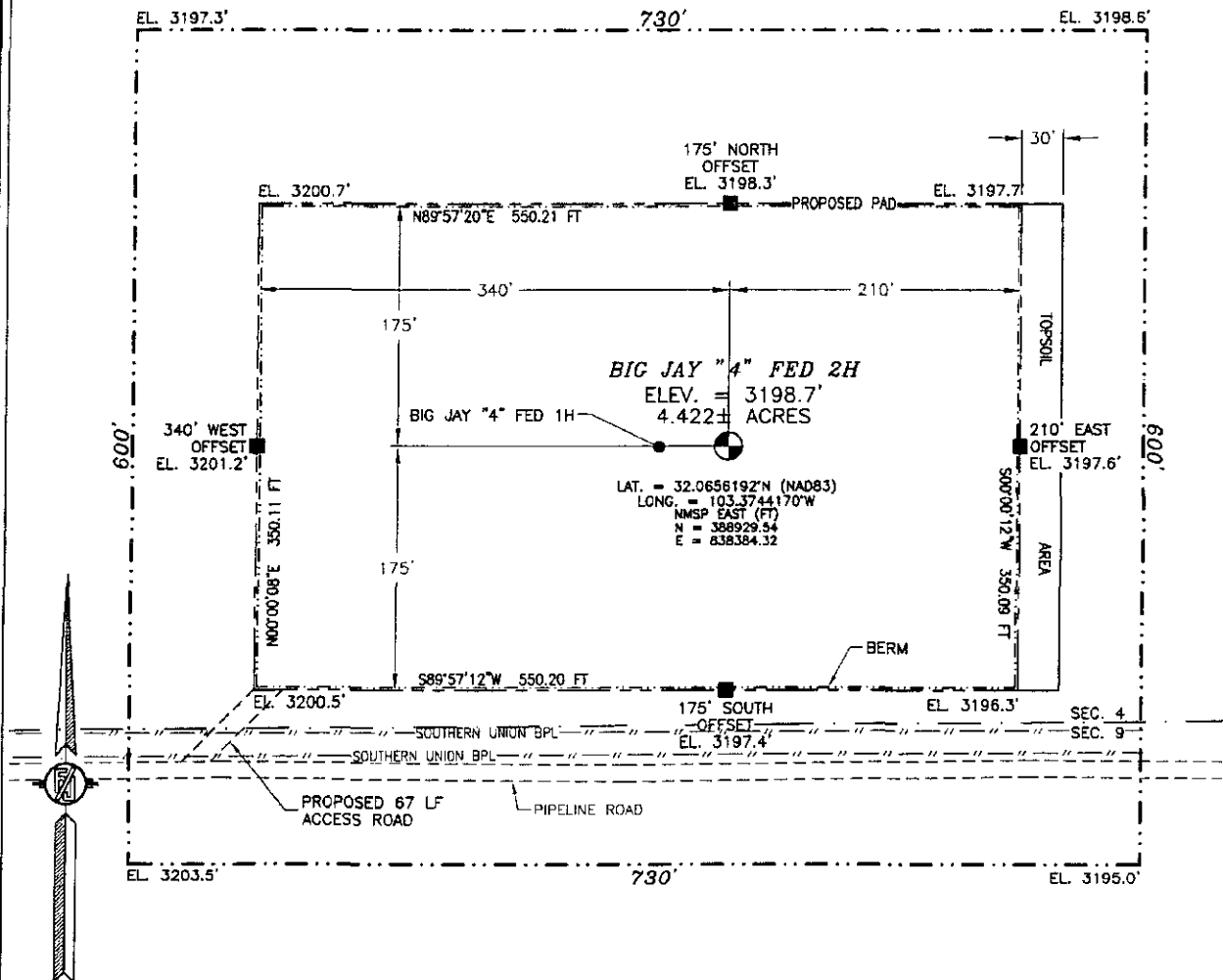
☐ AMENDED REPORT

PP: 200 FSL & 2330 FWL

SECTION 4, TOWNSHIP 26 SOUTH, RANGE 35 EAST, N.M.P.M.
LEA COUNTY, STATE OF NEW MEXICO

SITE MAP

NOTE: LATITUDE AND LONGITUDE COORDINATES ARE SHOWN USING THE NORTH AMERICAN DATUM OF 1983 (NAD83). LISTED NEW MEXICO STATE PLANE EAST COORDINATES ARE GRID (NAD83). BASIS OF BEARING AND DISTANCES USED ARE NEW MEXICO STATE PLANE EAST COORDINATES MODIFIED TO THE SURFACE



0 12 60 120 240

SCALE 1" = 120'

DIRECTIONS TO LOCATION

FROM THE INTERSECTION OF STATE HIGHWAY 128 AND CR 2 (BATTLE AXE ROAD) GO SOUTH AND WEST ON CR 2 FOR APPROX. 12.2 MILES TO A LEASE ROAD ON LEFT (SOUTH). TURN SOUTH ON LEASE ROAD GO APPROX. 0.6 OF A MILE TO PIPELINE ROAD, TURN LEFT (EAST) GO LEFT ON PIPELINE ROAD FOR APPROX. 9.4 MILES TO ROAD LATH WITH RED & WHITE FLAGGING ON LEFT (NORTH) OF PIPELINE ROAD. GO NORTHEAST APPROX. 87' TO THE SOUTHWEST CORNER FOR THIS LOCATION.

DEVON ENERGY PRODUCTION COMPANY, L.P.

BIG JAY "4" FED 2H

LOCATED 200 FT. FROM THE SOUTH LINE
AND 2030 FT. FROM THE WEST LINE OF
SECTION 4, TOWNSHIP 26 SOUTH,
RANGE 35 EAST, N.M.P.M.
LEA COUNTY, STATE OF NEW MEXICO

DECEMBER 11, 2014

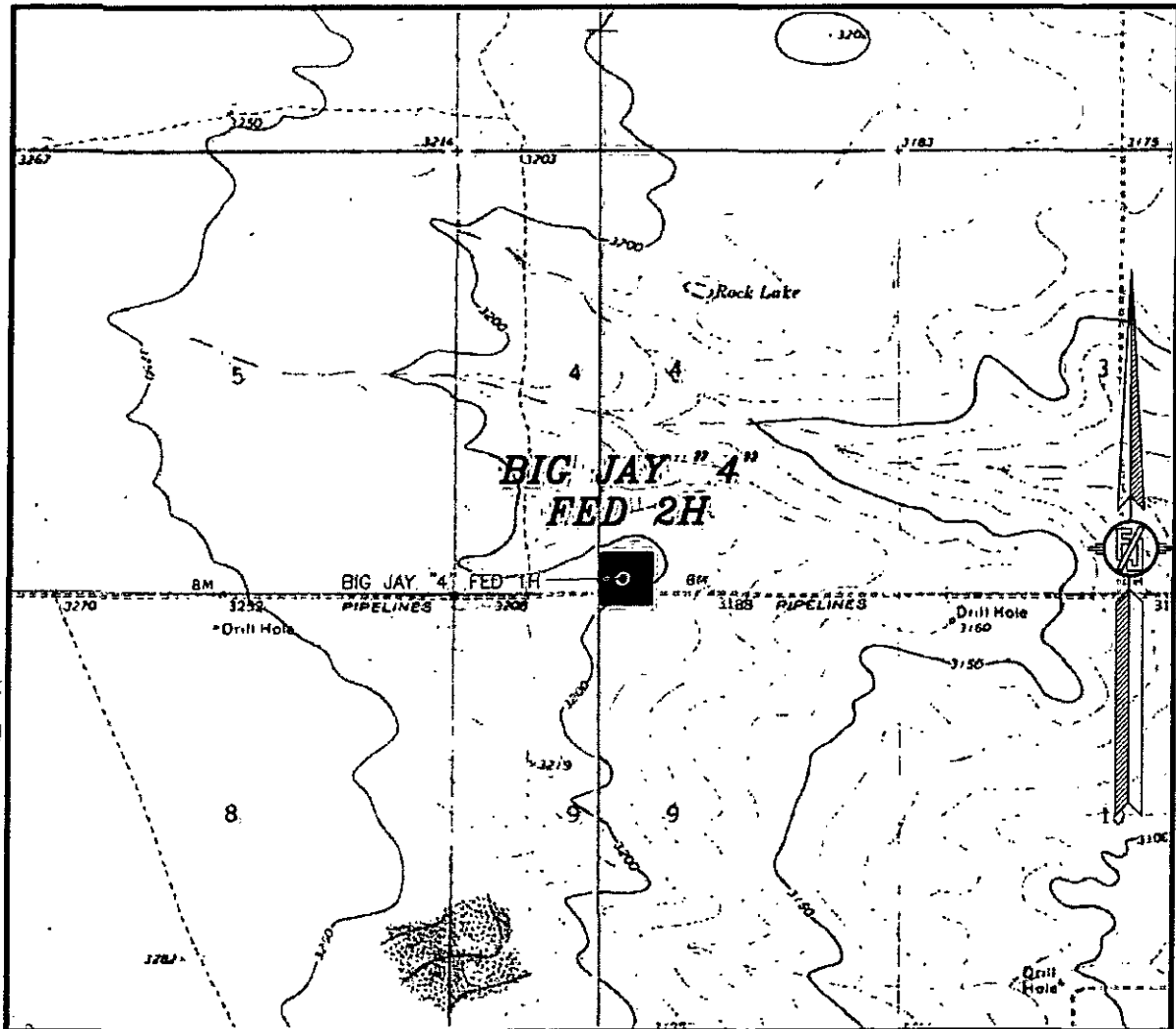
SURVEY NO. 3474

MADRON SURVEYING, INC.

301 SOUTH CANAL
(575) 234-3341

CARLSBAD, NEW MEXICO

SECTION 4, TOWNSHIP 26 SOUTH, RANGE 35 EAST, N.M.P.M.
LEA COUNTY, STATE OF NEW MEXICO
LOCATION VERIFICATION MAP



USGS QUAD MAP:
JAVELINA BASIN

NOT TO SCALE

DEVON ENERGY PRODUCTION COMPANY, L.P.

BIG JAY "4" FED 2H

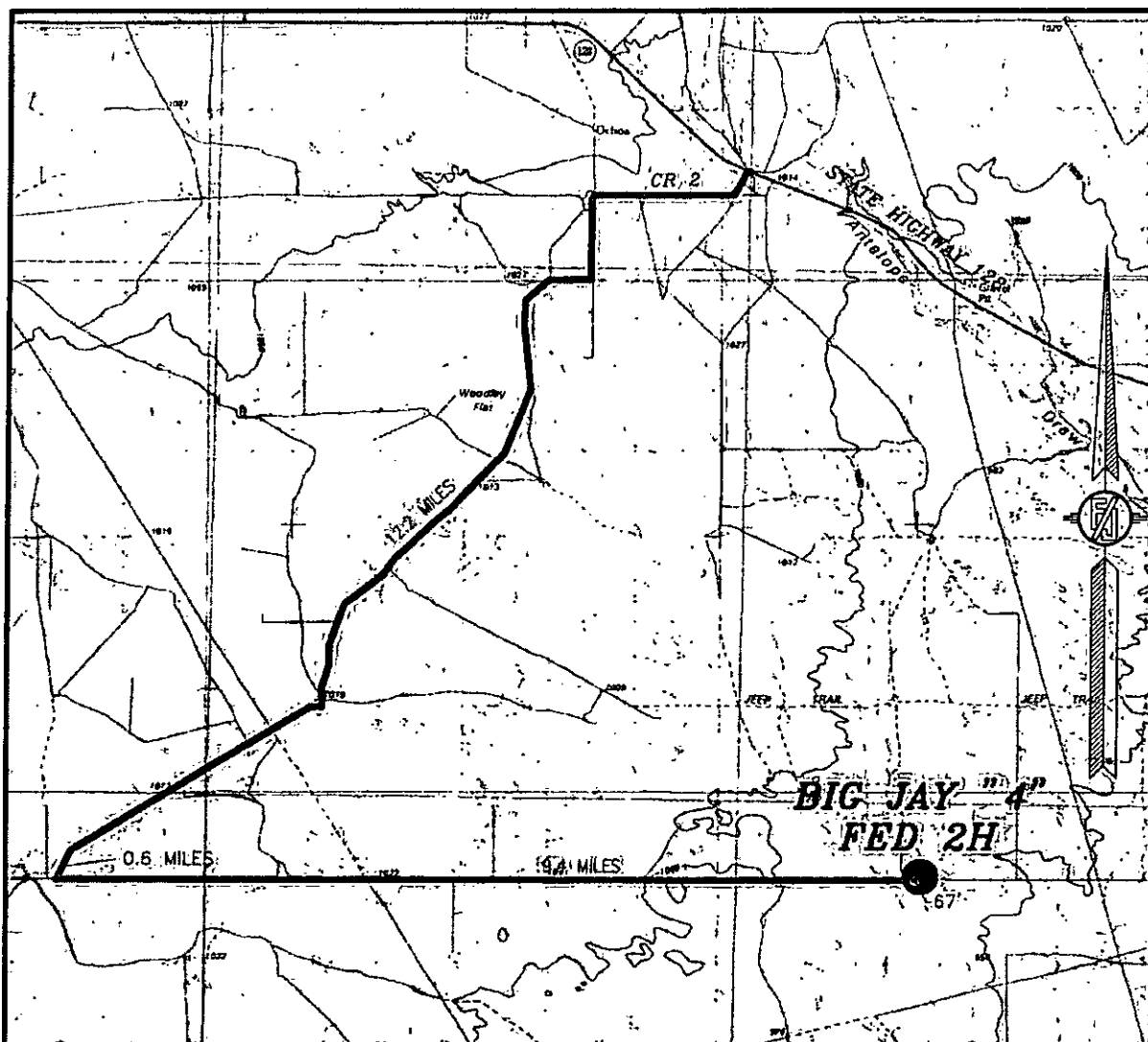
LOCATED 200 FT. FROM THE SOUTH LINE
AND 2030 FT. FROM THE WEST LINE OF
SECTION 4, TOWNSHIP 26 SOUTH,
RANGE 35 EAST, N.M.P.M.
LEA COUNTY, STATE OF NEW MEXICO

DECEMBER 11, 2014

SURVEY NO. 3474

MADRON SURVEYING, INC. 301 SOUTH CANAL (575) 234-3341 CARLSBAD, NEW MEXICO

SECTION 4, TOWNSHIP 26 SOUTH, RANGE 35 EAST, N.M.P.M.
LEA COUNTY, STATE OF NEW MEXICO
VICINITY MAP



DISTANCES IN MILES

NOT TO SCALE

DEVON ENERGY PRODUCTION COMPANY, L.P.

BIG JAY "4" FED 2H

LOCATED 200 FT. FROM THE SOUTH LINE
AND 2030 FT. FROM THE WEST LINE OF
SECTION 4, TOWNSHIP 26 SOUTH,
RANGE 35 EAST, N.M.P.M.
LEA COUNTY, STATE OF NEW MEXICO

DECEMBER 11, 2014

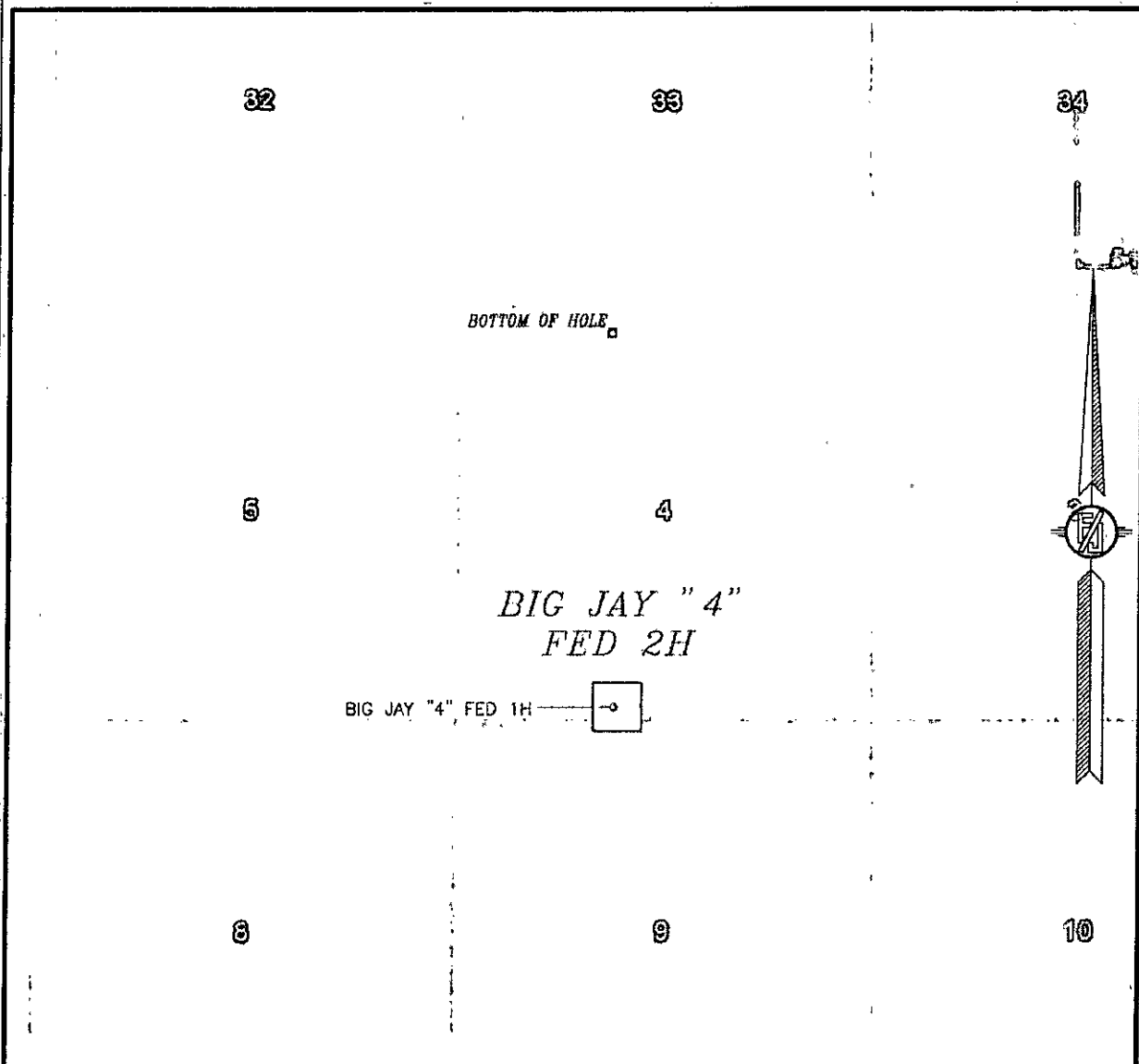
DIRECTIONS TO LOCATION

FROM THE INTERSECTION OF STATE HIGHWAY 128 AND CR 2 (BATTLE AXE ROAD) GO SOUTH AND WEST ON CR 2 FOR APPROX. 12.2 MILES TO A LEASE ROAD ON LEFT (SOUTH). TURN SOUTH ON LEASE ROAD GO APPROX. 0.6 OF A MILE TO PIPELINE ROAD. TURN LEFT (EAST) GO LEFT ON PIPELINE ROAD FOR APPROX. 9.4 MILES TO ROAD LATH WITH RED & WHITE FLAGGING ON LEFT (NORTH) OF PIPELINE ROAD. GO NORTHEAST APPROX. 67' TO THE SOUTHWEST CORNER FOR THIS LOCATION.

SURVEY NO. 3474

MADRON SURVEYING, INC. 301 SOUTH CANAL (575) 234-3341 CARLSBAD, NEW MEXICO

SECTION 4, TOWNSHIP 26 SOUTH, RANGE 35 EAST, N.M.P.M.
LEA COUNTY, STATE OF NEW MEXICO
AERIAL PHOTO



NOT TO SCALE
AERIAL PHOTO:
GOOGLE EARTH
APRIL 2013

DEVON ENERGY PRODUCTION COMPANY, L.P.

BIG JAY "4" FED 2H

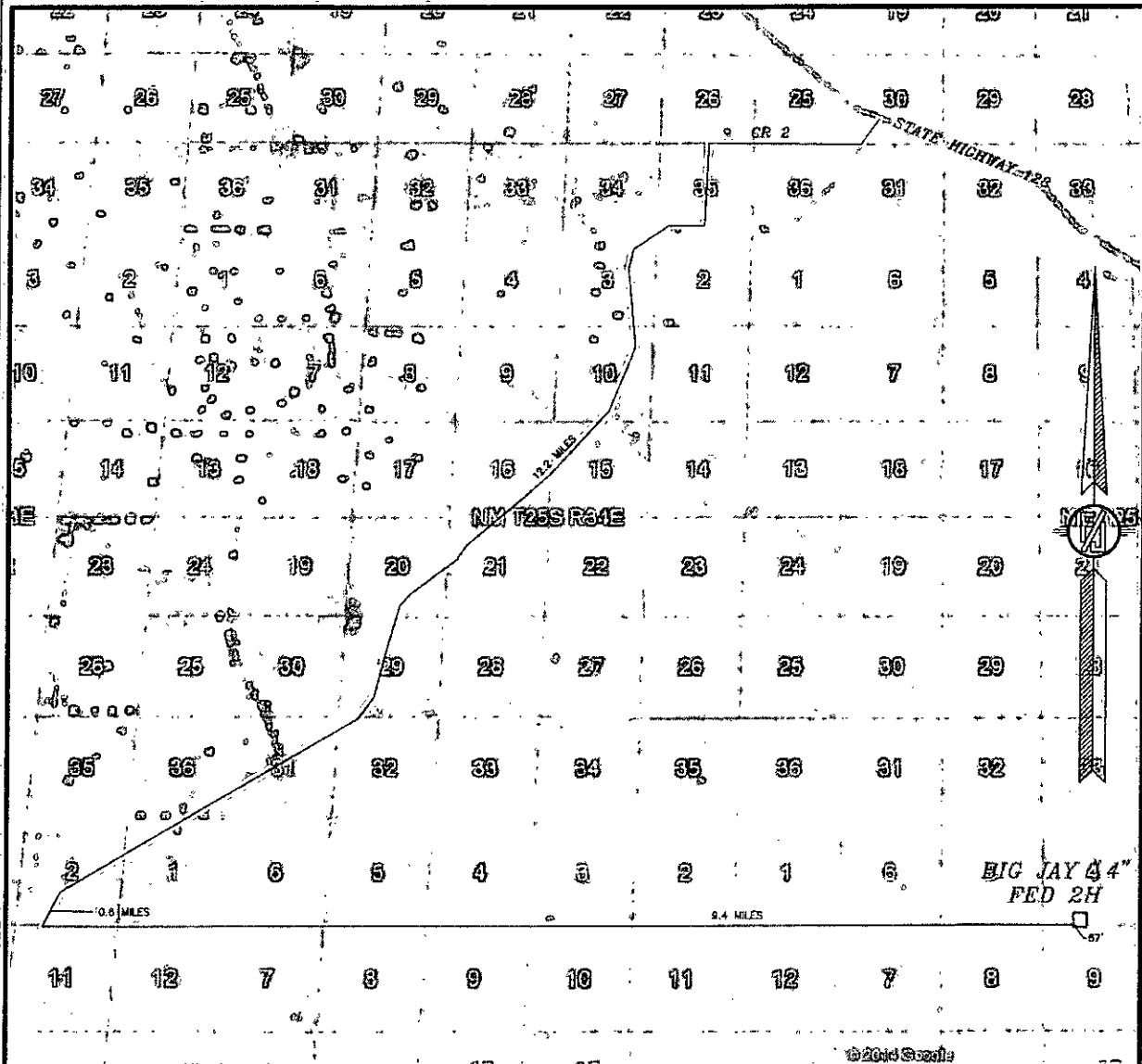
LOCATED 200 FT. FROM THE SOUTH LINE
AND 2030 FT. FROM THE WEST LINE OF
SECTION 4, TOWNSHIP 26 SOUTH,
RANGE 35 EAST, N.M.P.M.
LEA COUNTY, STATE OF NEW MEXICO

DECEMBER 11, 2014

SURVEY NO. 3474

MADRON SURVEYING, INC. 301 SOUTH CANAL CARLSBAD, NEW MEXICO
(575) 234-3341

SECTION 4, TOWNSHIP 26 SOUTH, RANGE 35 EAST, N.M.P.M.
LEA COUNTY, STATE OF NEW MEXICO
ACCESS AERIAL ROUTE MAP



NOT TO SCALE
AERIAL PHOTO:
GOOGLE EARTH
APRIL 2013

DEVON ENERGY PRODUCTION COMPANY, L.P.

BIG JAY "4" FED 2H

LOCATED 200 FT. FROM THE SOUTH LINE
AND 2030 FT. FROM THE WEST LINE OF
SECTION 4, TOWNSHIP 26 SOUTH,
RANGE 35 EAST, N.M.P.M.
LEA COUNTY, STATE OF NEW MEXICO

DECEMBER 11, 2014

SURVEY NO. 3474

MADRON SURVEYING, INC. 301 SOUTH CANAL CARLSBAD, NEW MEXICO
(575) 234-3341

One Mile Radius Map

Estimated distances to nearest wellbores:

From SHL: Harvey 4 Federal 1 3080 ft NNW
 Harvey 4 Federal 1 100 ft W
 From BHL: Harvey 4 Federal 1 1695 ft S

26S 35E

devon

Big Jay 4 Fed 2H

1 Mile Radius Map

0 1,911
 FEET

WELL SYMBOLS
 DRY AND ABANDONED WELL
 PROPOSED

January 15, 2015

32

33

34

1 MILE

BHL

HARVEY 4 FEDERAL

4

1 MILE

SHL

BIG JAY 4 FED
 2H

SINCLAIR ETAL A

8

9

1