

COPY

DISTRICT I
1625 N. French Dr., Hobbs, NM 88240
Phone: (575) 393-6161 Fax: (575) 393-0720

DISTRICT II
811 S. First St., Artesia, NM 88210
Phone: (575) 748-1283 Fax: (575) 748-9720

DISTRICT III
1000 Rio Brazos Road, Aztec, NM 87410
Phone: (505) 334-6178 Fax: (505) 334-6170

DISTRICT IV
1220 S. St. Francis Dr., Santa Fe, NM 87505
Phone: (505) 476-3460 Fax: (505) 476-3462

State of New Mexico
Energy, Minerals & Natural Resources Department
OIL CONSERVATION DIVISION
1220 South St. Francis Dr.
Santa Fe, New Mexico 87505

HOBBS OOD

Form C-102
Revised August 1, 2011
Submit one copy to appropriate
District Office

OCT 07 2015

AMENDED REPORT

RECEIVED

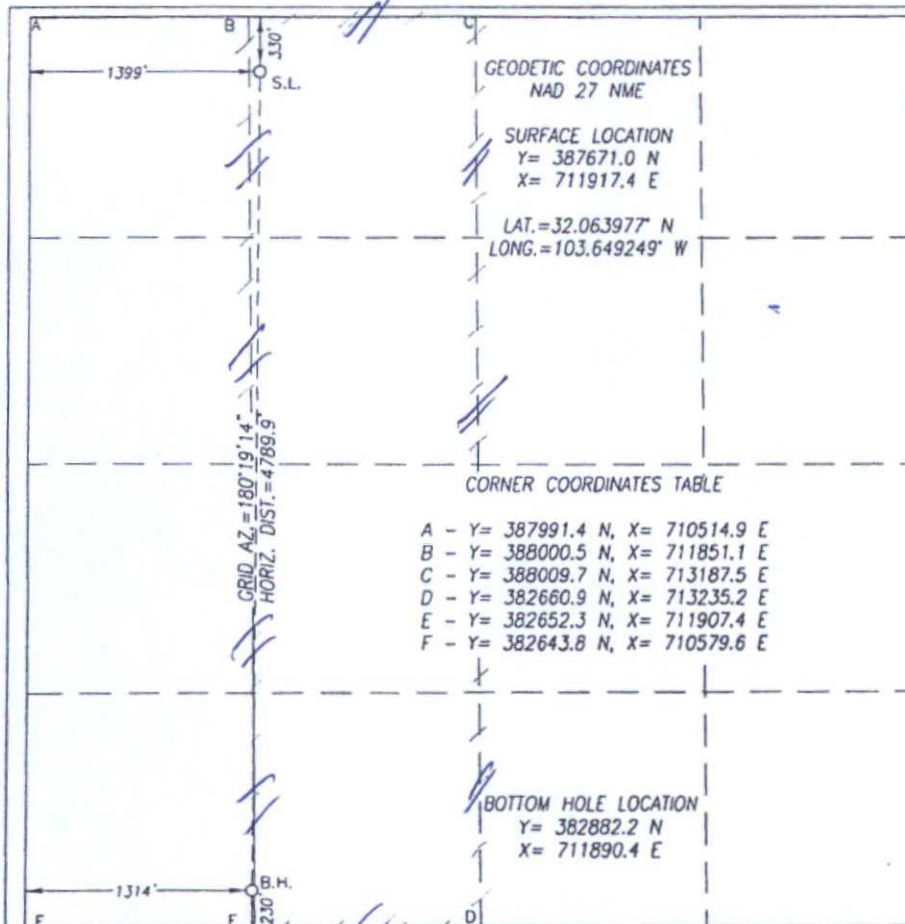
WELL LOCATION AND ACREAGE DEDICATION PLAT

API Number 30-025-42842	Pool Code 97838	Pool Name Jennings; Upper Bone Spring Shale
Property Code 305301	Property Name MESA 8105 JV-P	Well Number 4H
OGRID No. 260297	Operator Name BTA OIL PRODUCERS, LLC	Elevation 3244'

Surface Location									
UL or lot No.	Section	Township	Range	Lot Idn	Feet from the	North/South line	Feet from the	East/West line	County
C	11	26-S	32-E		330	NORTH	1399	WEST	LEA

Bottom Hole Location If Different From Surface									
UL or lot No.	Section	Township	Range	Lot Idn	Feet from the	North/South line	Feet from the	East/West line	County
M	11	26-S	32-E		230	SOUTH	1314	WEST	LEA
Dedicated Acres 160		Joint or Infill	Consolidation Code	Order No.					

NO ALLOWABLE WILL BE ASSIGNED TO THIS COMPLETION UNTIL ALL INTERESTS HAVE BEEN CONSOLIDATED OR A NON-STANDARD UNIT HAS BEEN APPROVED BY THE DIVISION



OPERATOR CERTIFICATION

I hereby certify that the information herein is true and complete to the best of my knowledge and belief, and that this organization either owns a working interest or unleased mineral interest in the land including the proposed bottom hole location or has a right to drill this well at this location pursuant to a contract with an owner of such mineral or working interest, or to a voluntary pooling agreement or a compulsory pooling order heretofore entered by the division.

Kayla McConnell 12/15/14
Signature Date

Kayla McConnell

Printed Name

kmccconnell@btaoil.com

E-mail Address

SURVEYOR CERTIFICATION

I hereby certify that the well location shown on this plat was plotted from field notes of actual surveys made by me or under my supervision, and that the same is true and correct to the best of my belief.

AUGUST 15, 2014

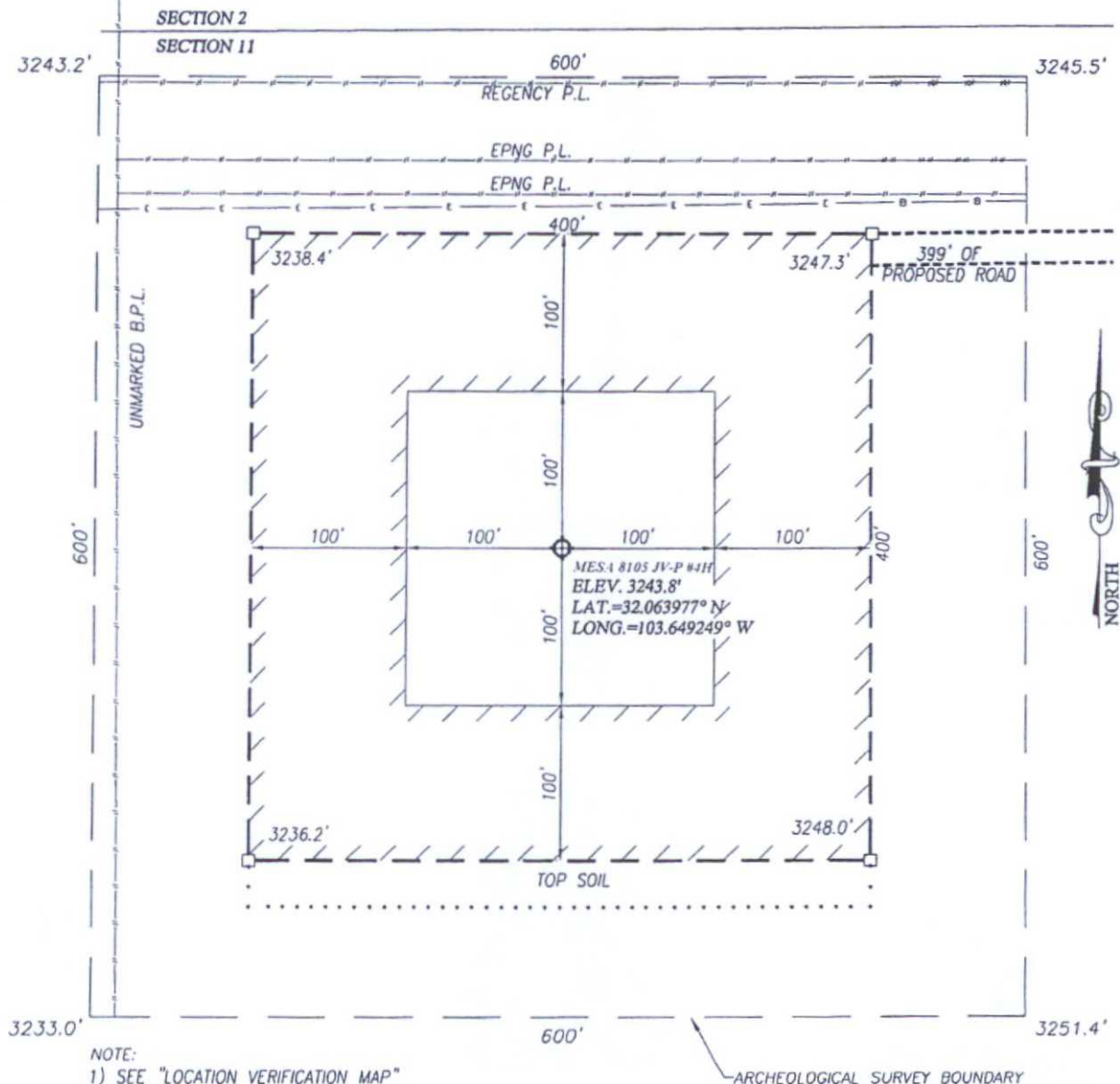
Date of Survey
Signature & Seal of Professional Surveyor:



OCT 08 2015

COPY

Attachment to APD
BTA Oil Producers, LLC
Mesa 8105 JV-P #4H
Location Plat – Electric Line, Gas
Pipeline, Interim Reclamation



DIRECTIONS TO MESA 8105 JV-P #4H

FROM THE INTERSECTION OF HWY 18 AND HWY. 128 (JAL N.M.)
GO WEST ON HWY 128 APPROX. 29.2 MILES TURN LEFT AND
GO SOUTH ON CO. RD. J1 (ORLA RD.) APPROX 10.4 MILES
TURN LEFT AND GO EAST APPROX. 1.5 MILES TO STAKED ROAD,
FOLLOW STAKES SOUTH 167' TO THE LOCATION.



PROVIDING SURVEYING SERVICES
SINCE 1946
JOHN WEST SURVEYING COMPANY
412 N. DAL PASO HOBBS, N.M. 88240
(575) 393-3117 www.jwsc.biz
TBPLS# 10021000

100 0 100 200 Feet
Scale: 1"=100'

BTA OIL PRODUCERS, LLC

MESA 8105 JV-P #4H WELL
LOCATED 330 FEET FROM THE NORTH LINE
AND 1399 FEET FROM THE WEST LINE OF SECTION 11,
TOWNSHIP 26 SOUTH, RANGE 32 EAST, N.M.P.M.,
LEA COUNTY, NEW MEXICO

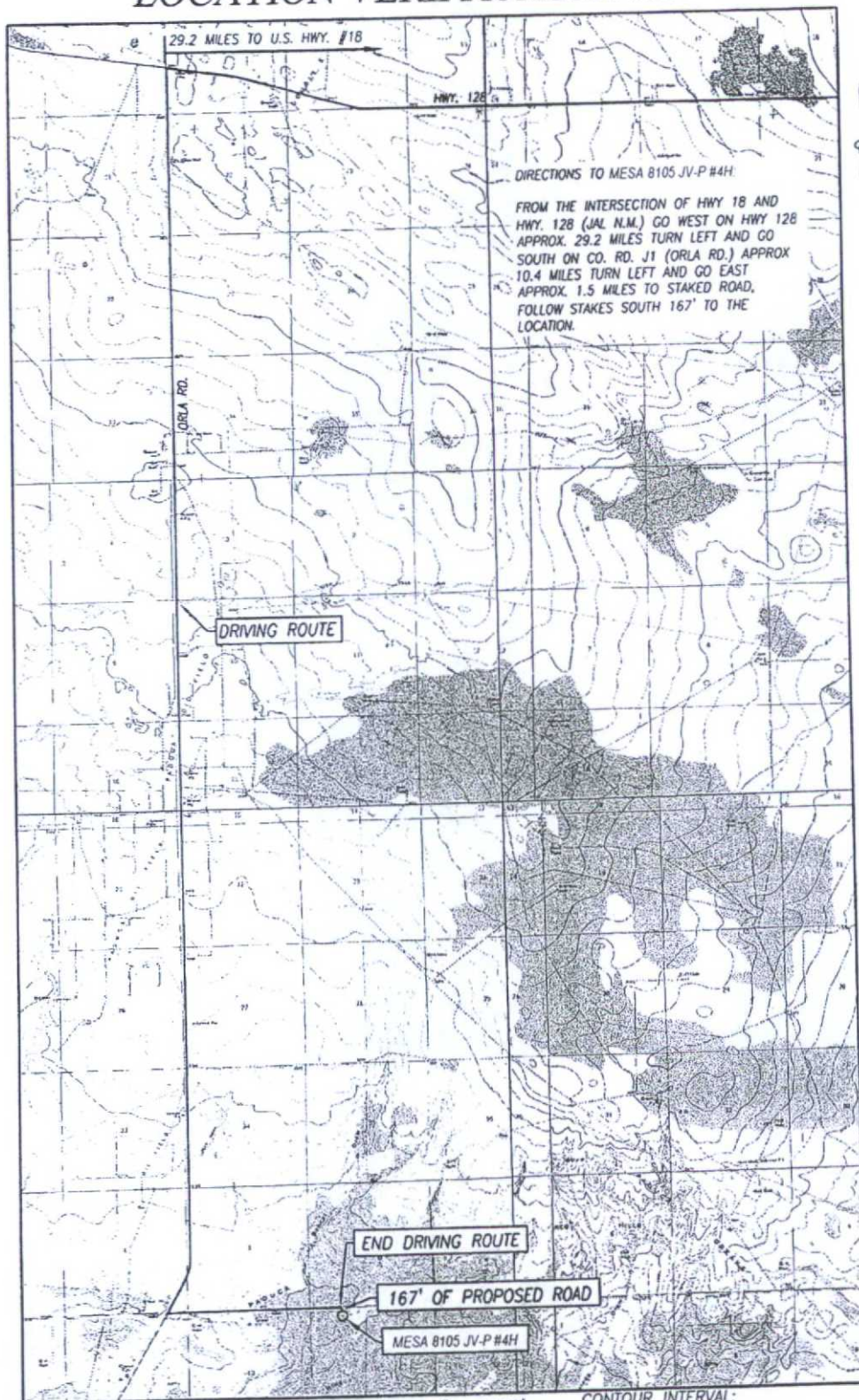
Survey Date: 8/15/14	CAD Date: 11/13/14	Drawn By: LSL
W.O. No.: 14111085	Rev. :	Rel. W.O.: 14110813

Sheet 1 of 1

COPY

Attachment to APD
BTA Oil Producers, LLC
Mesa 8105 JV-P #4H
Sec 11, T26S, R32E
Lea County, NM

LOCATION VERIFICATION MAP



SEC. 11 TWP. 26-S RGE. 32-E
COUNTY LEA STATE NEW MEXICO
DESCRIPTION 330' FNL & 1399' FWL
ELEVATION 3244'
OPERATOR BTA OIL PRODUCERS, LLC
LEASE MESA 8105 JV-P
U.S.G.S. TOPOGRAPHIC MAP
PADUCA BREAKS WEST, N.M. SURVEY N.M.P.M.

SCALE: 1" = 5280'

CONTOUR INTERVAL:
PADUCA BREAKS WEST, N.M. - 10'
PADUCA BREAKS NW, N.M. - 10'

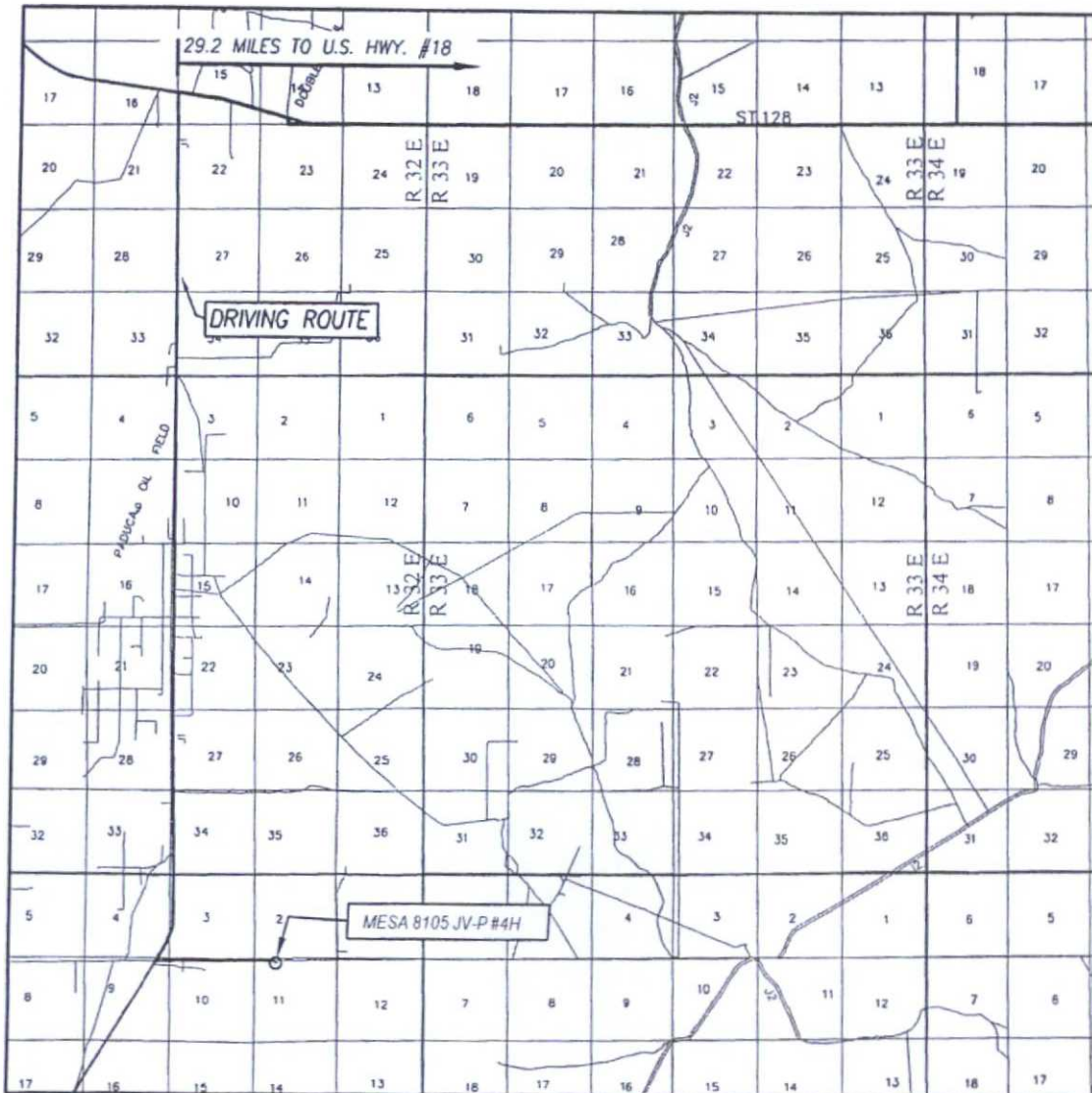


PROVIDING SURVEYING SERVICES
SINCE 1946
JOHN WEST SURVEYING COMPANY
412 N. DAL PASO HOBBS, N.M. 88240
(575) 393-3117 www.jwsc.biz
TBPLS# 10021000

COPY

Attachment to APD
BTA Oil Producers, LLC
Mesa 8105 JV-P #4H
Sec 11, T26S, R32E
Lea County, NM

VICINITY MAP



SCALE: 1" = 2 MILES

DRIVING ROUTE: SEE LOCATION VERIFICATION MAP

SEC. 11 TWP. 26-S RGE. 32-E

SURVEY N.M.P.M.


COUNTY LEA STATE NEW MEXICO

DESCRIPTION 330' FNL & 1399' FWL

ELEVATION 3244'

OPERATOR BTA OIL PRODUCERS, LLC

LEASE MESA 8105 JV-P #4H



PROVIDING SURVEYING SERVICES
SINCE 1946
JOHN WEST SURVEYING COMPANY
412 N. DAL PASO HOBBS, N.M. 88240
(575) 393-3117 www.jwsc.biz
TBPLS# 10021000