

# COPY

BTA Oil Producers LLC  
Mesa, 8105 JV-P 20H

SHL: 330 FNL & 630 FWL, Section: 11, T.26S., R.32E.  
BHL: 230 FSL & 930 FWL, Section: 11, T.26S., R.32E.

## Surface Use Plan of Operations

HOBBS OCD

OCT 07 2015

### Introduction

The following surface use plan of operations will be followed and carried out once the APD is approved. No other disturbance will be created other than what was submitted in this surface use plan. If any other surface disturbance is needed after the APD is approved, a BLM approved sundry notice or right of way application will be acquired prior to any new surface disturbance. RECEIVED

Before any surface disturbance is created, stakes or flagging will be installed to mark boundaries of permitted areas of disturbance, including soils storage areas. As necessary, slope, grade, and other construction control stakes will be placed to ensure construction in accordance with the surface use plan. All boundary markers will be maintained in place until final construction cleanup is completed. If disturbance boundary markers are disturbed or knocked down, they will be replaced before construction proceeds.

If terms and conditions are attached to the approved APD and amend any of the proposed actions in this surface use plan, we will adhere to the terms and conditions.

### 1. Existing Roads

- a. The existing access road route to the proposed project is depicted on Mesa 8105 JV-P #20H - Location Plat. Improvements to the driving surface will be done if necessary. No new surface disturbance will be done, unless otherwise noted in the New or Reconstructed Access Roads section of this surface use plan..
- b. The existing access road route to the proposed project does cross lease boundaries and a BLM road right-of-way will be acquired from the BLM prior to construction activities.
- c. The operator will improve or maintain existing roads in a condition the same as or better than before operations begin. The operator will repair pot holes, clear ditches, repair the crown, etc. All existing structures on the entire access route such as cattleguards, other range improvement projects, culverts, etc. will be properly repaired or replaced if they are damaged or have deteriorated beyond practical use.
- d. We will prevent and abate fugitive dust as needed, whether created by vehicular traffic, equipment operations, or wind events. BLM written approval will be acquired before application of surfactants, binding agents, or other dust suppression chemicals on roadways.

### 2. New or Reconstructed Access Roads

- a. No new road will be constructed for this project.

### 3. Location of Existing Wells

- a. Mesa 8105 JV-P #20H - 1 Mile Radius Map of the APD depicts all known wells within a one mile radius of the proposed well.
- b. Mewbourne Red Hills West 10 Fed #1H 30-025-39911  
Mewbourne Red Hills West Unit #7H 30-025-41849  
COG Bufflehead 10 Fed #1H 30-025-40423  
COG Bufflehead 10 Fed #2H 30-025-40594

### 4. Location of Existing and/or Proposed Production Facilities

- a. All permanent, lasting more than 6 months, above ground structures including but not limited to pumpjacks, storage tanks, barrels, pipeline risers, meter housing, etc. that are not subject to safety requirements will be painted a non-reflective paint color, Shale Green, from the BLM Standard Environmental Colors chart, unless another color is required in the APD Conditions of Approval.

OCT 08 2015

- b. If any type of production facilities are located on the well pad, they will be strategically placed to allow for maximum interim reclamation, recontouring, and revegetation of the well location.
- c. A production facility is proposed to be installed off the proposed well location. Production from the well will be processed at this production facility. Mesa 8105 JV-P #2H - Production Facility Layout depicts the location of the production facilities.
- d. The proposed production facility will have a secondary containment structure that is constructed to hold the capacity of 1-1/2 times the largest tank, plus freeboard to account for precipitation, unless more stringent protective requirements are deemed necessary.
- e. There is no other diagram that depicts production facilities.
- f. A pipeline to transport production from the proposed well to the production facility will be installed.
  - i. We plan to install a 3 inch buried steel pipeline from the proposed well to the offsite production facility. The proposed length of the pipeline will be 230 feet. The working pressure of the pipeline will be about 2500 psi. A 25 foot wide work area will be needed to install the buried pipeline. In areas where blading is allowed, topsoil will be stockpiled and separated from the excavated trench mineral material. Final reclamation procedures will match the procedures in Plans for Surface Reclamation. When the excavated soil is backfilled, it will be compacted to prevent subsidence. No berm over the pipeline will be evident.
  - ii. Mesa 8105 JV-P Proposed Flowlines Map depicts the proposed production pipeline route from the well to the existing production facility.
  - iii. The proposed pipeline does not cross lease boundaries, so a right of way grant will not need to be acquired from the BLM.

**If any plans change regarding the production facility or other infrastructure (pipeline, electric line, etc.), we will submit a sundry notice or right of way (if applicable) prior to installation or construction.**

#### **Additional Pipeline(s)**

We propose to install 1 additional pipeline(s):

1. Buried Gas pipeline:

- a. We plan to install a 6 inch buried Steel pipeline from the proposed well to existing Regency pipeline. The proposed length of the pipeline will be 160 feet. The working pressure of the pipeline will be about 65 psi. A 10 foot wide work area will be needed to install the buried pipeline. We will need an extra 10 foot wide area near corners to safely install the pipeline. In areas where blading is allowed, topsoil will be stockpiled and separated from the excavated trench mineral material. Final reclamation procedures will match the procedures in Plans for Surface Reclamation. When the excavated soil is backfilled, it will be compacted to prevent subsidence. No berm over the pipeline will be evident.
- b. 8105 JV-P #20H Location Plat depicts the proposed Gas pipeline route.
- c. Since the proposed pipeline crosses lease boundaries, a right of way grant will be acquired prior to installation of the proposed pipeline.

#### **Electric Line(s)**

- a. We plan to install an overhead electric line for the proposed well. The proposed length of the electric line will be 160 feet. Mesa 8105 JV-P #20H Location Plat depicts the location of the proposed electric line route. The electric line will be construction to provide protection from raptor electrocution.

- b. Since the proposed electric line crosses lease boundaries, a right of way grant will be acquired prior to installation of the proposed electric line.

## **5. Location and Types of Water**

- a. The source and location of the water supply are as follows: Water for drilling and completion operations will either be purchased from commercial water stations in the area and trucked to the well site using the existing and proposed roads or transported from a pre existing water well by plastic temporary "fas line" laid on the surface along side existing roads. No water well be drilled on the location.
- b. The operator will use established or constructed oil and gas roads to transport water to the well site. The operator will try to utilize the identified access route in the surface use plan.

## **6. Construction Material**

- a. Caliche used for construction of the drilling pad and access road will be obtained from the closest existing caliche pit as designated by the BLM or from prevailing deposits found under the location. If there is not sufficient material available, it will be purchased from the area designated by the BLM.

## **7. Methods for Handling Waste**

- a. Drilling fluids and produced oil and water from the well during drilling and completion operations will be stored safely and disposed of properly in an NMOCD approved disposal facility.
- b. Garbage and trash produced during drilling and completion operations will be collected in a trash container and disposed of properly at a state approved disposal facility. All trash on and around the well site will be collected for disposal.
- c. Human waste and grey water will be properly contained and disposed of properly at a state approved disposal facility.
- d. After drilling and completion operations, trash, chemicals, salts, frac sand and other waste material will be removed and disposed of properly at a state approved disposal facility.
- e. The well will be drilled utilizing a closed loop system. Drill cutting will be properly disposed of into steel tanks and taken to an NMOCD approved disposal facility.

## **8. Ancillary Facilities**

- a. The location of the proposed ancillary facilities is depicted on Mesa 8105 JV-P #20H Rig Pad Layout.
- b. The type of ancillary facility needed is It is possible that a mobile home will be used at the well site during drilling operations. Frac Pond will be constructed in the Northwest Quarter of section 11 as depicted on the Frac Pond Plat.

## **9. Well Site Layout**

- a. The following information is presented in the well site survey plat or diagram:
- i. reasonable scale (near 1":50')
  - ii. well pad dimensions
  - iii. well pad orientation
  - iv. drilling rig components
  - v. proposed access road
  - vi. elevations of all points

- vii. topsoil stockpile
  - viii. reserve pit location/dimensions if applicable
  - ix. other disturbances needed (flare pit, stinger, frac farm pad, etc.)
  - x. existing structures within the 600' x 600' archaeological surveyed area (pipelines, electric lines, well pads, etc.)
- b. The proposed drilling pad was staked and surveyed by a professional surveyor. The attached survey plat of the well site depicts the drilling pad layout as staked.
- c. The submitted survey plat does depict all the necessary information required by Onshore Order No. 1.
- d. Topsoil Salvaging
- i. Grass, forbs, and small woody vegetation, such as mesquite will be excavated as the topsoil is removed. Large woody vegetation will be stripped and stored separately and respread evenly on the site following topsoil resspreading. Topsoil depth is defined as the top layer of soil that contains 80% of the roots. In areas to be heavily disturbed, the top 6 inches of soil material, will be stripped and stockpiled on the perimeter of the well location and along the perimeter of the access road to control run-on and run-off, to keep topsoil viable, and to make redistribution of topsoil more efficient during interim reclamation. Stockpiled topsoil should include vegetative material. Topsoil will be clearly segregated and stored separately from subsoils. Contaminated soil will not be stockpiled, but properly treated and handled prior to topsoil salvaging.

## 10. Plans for Surface Reclamation

### Reclamation Objectives

- i. The objective of interim reclamation is to restore vegetative cover and a portion of the landform sufficient to maintain healthy, biologically active topsoil; control erosion; and minimize habitat and forage loss, visual impact, and weed infestation, during the life of the well or facilities.
- ii. The long-term objective of final reclamation is to return the land to a condition similar to what existed prior to disturbance. This includes restoration of the landform and natural vegetative community, hydrologic systems, visual resources, and wildlife habitats. To ensure that the long-term objective will be reached through human and natural processes, actions will be taken to ensure standards are met for site stability, visual quality, hydrological functioning, and vegetative productivity.
- iii. The BLM will be notified at least 3 days prior to commencement of any reclamation procedures.
- iv. If circumstances allow, interim reclamation and/or final reclamation actions will be completed no later than 6 months from when the final well on the location has been completed or plugged. We will gain written permission from the BLM if more time is needed.
- v. Interim reclamation will be performed on the well site after the well is drilled and completed. Mesa 8105 JV-P #20H Location Plat depicts the location and dimensions of the planned interim reclamation for the well site.

### Interim Reclamation Procedures (If performed)

- 1. Within 30 days of well completion, the well location and surrounding areas will be cleared of, and maintained free of, all materials, trash, and equipment not required for production.
- 2. In areas planned for interim reclamation, all the surfacing material will be removed and returned to the original mineral pit or recycled to repair or build roads and well pads.
- 3. The areas planned for interim reclamation will then be recontoured to the original contour if feasible, or if not feasible, to an interim contour that blends with the surrounding topography as much as possible.

Where applicable, the fill material of the well pad will be backfilled into the cut to bring the area back to the original contour. The interim cut and fill slopes prior to re-seeding will not be steeper than a 3:1 ratio, unless the adjacent native topography is steeper. Note: Constructed slopes may be much steeper during drilling, but will be recontoured to the above ratios during interim reclamation.

4. Topsoil will be evenly respread and aggressively revegetated over the entire disturbed area not needed for all-weather operations including cuts & fills. To seed the area, the proper BLM seed mixture, free of noxious weeds, will be used. Final seedbed preparation will consist of contour cultivating to a depth of 4 to 6 inches within 24 hours prior to seeding, dozer tracking, or other imprinting in order to break the soil crust and create seed germination micro-sites.

5. Proper erosion control methods will be used on the area to control erosion, runoff and siltation of the surrounding area.

6. The interim reclamation will be monitored periodically to ensure that vegetation has reestablished and that erosion is controlled.

#### **Final Reclamation (well pad, buried pipelines, etc.)**

1. Prior to final reclamation procedures, the well pad, road, and surrounding area will be cleared of material, trash, and equipment.

2. All surfacing material will be removed and returned to the original mineral pit or recycled to repair or build roads and well pads.

3. All disturbed areas, including roads, pipelines, pads, production facilities, and interim reclaimed areas will be recontoured to the contour existing prior to initial construction or a contour that blends indistinguishably with the surrounding landscape. Topsoil that was spread over the interim reclamation areas will be stockpiled prior to recontouring. The topsoil will be redistributed evenly over the entire disturbed site to ensure successful revegetation.

4. After all the disturbed areas have been properly prepared, the areas will be seeded with the proper BLM seed mixture, free of noxious weeds. Final seedbed preparation will consist of contour cultivating to a depth of 4 to 6 inches within 24 hours prior to seeding, dozer tracking, or other imprinting in order to break the soil crust and create seed germination micro-sites.

5. Proper erosion control methods will be used on the entire area to control erosion, runoff and siltation of the surrounding area.

6. All unused equipment and structures including pipelines, electric line poles, tanks, etc. that serviced the well will be removed.

7. All reclaimed areas will be monitored periodically to ensure that revegetation occurs, that the area is not redisturbed, and that erosion is controlled.

## **11. Surface Ownership**

- a. The surface ownership of the proposed project is USA - BLM, Grazing Lessee Oliver Kiehne, Box 135, Orla, TX 79770-0135.

## **12. Other Information**

- a. An MOA will be entered into with the BLM for archaeological needs. CEHMM will prepare the EA, using BLM onsite field records, and furnish directly to the Carlsbad BLM office. BLM Bond Coverage -- NM1195 & NM000849 Frac Pond permitted with Mesa 8105 JV-P #4H. Produced water will be held temporarily in steel tanks and then trucked to an approved NMOCD commercial disposal facility. If any plans change, we will submit

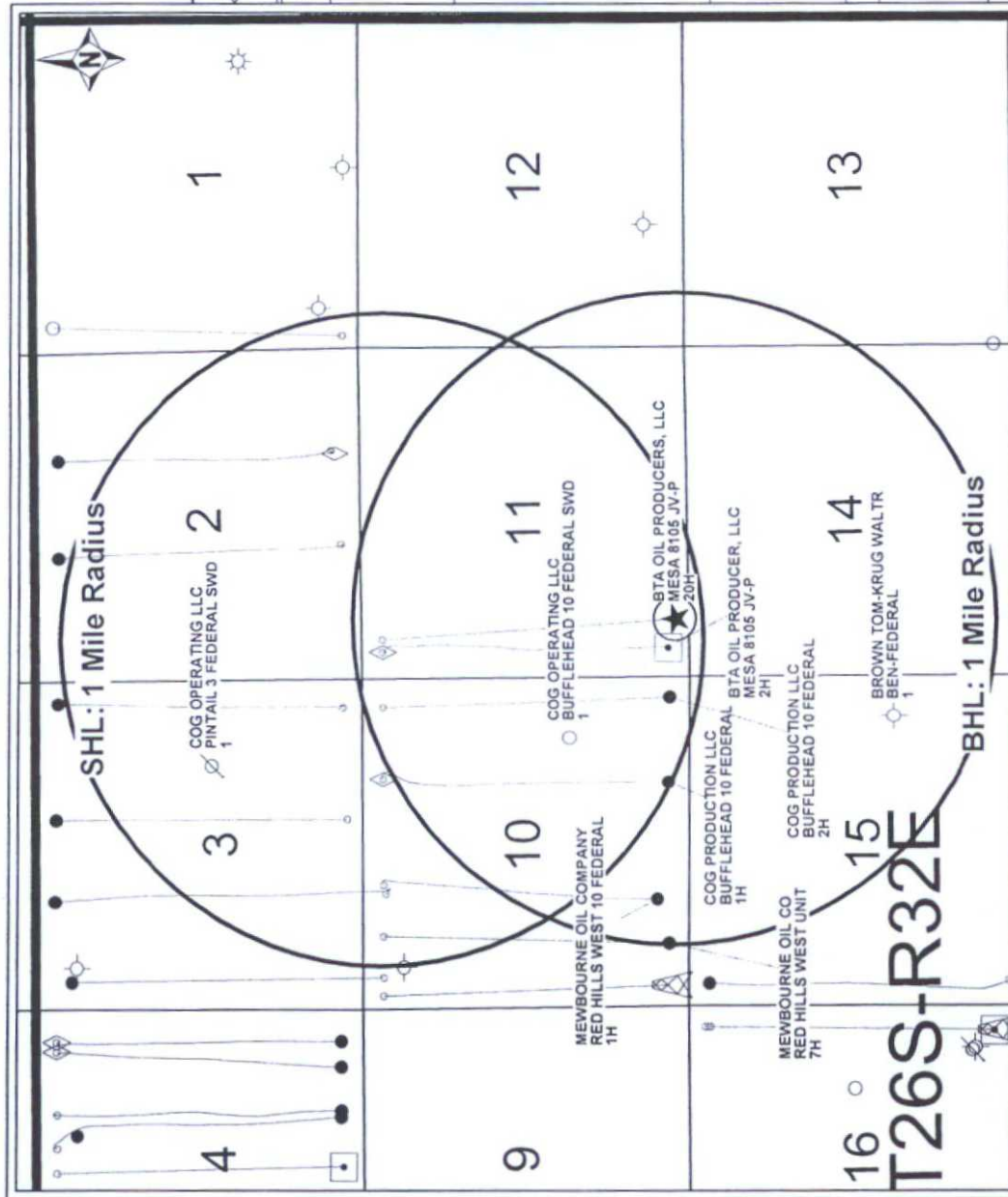
a sundry notice or right of way.

### **13. Maps and Diagrams**

Mesa 8105 JV-P #20H - Location Plat - Existing Road  
Mesa 8105 JV-P #20H - 1 Mile Radius Map - Wells Within One Mile  
Mesa 8105 JV-P #2H - Production Facility Layout - Production Facilities Diagram  
Mesa 8105 JV-P Proposed Flowlines Map - Production Pipeline  
8105 JV-P #20H Location Plat - Gas Pipeline  
Mesa 8105 JV-P #20H Location Plat - Electric Line  
Mesa 8105 JV-P #20H Rig Pad Layout - Ancillary Facilities  
Mesa 8105 JV-P #20H Location Plat - Interim Reclamation

COPY

Attachment to APD  
BTA Oil Producers, LLC  
Mesa 8105 JV-P #20H  
1 Mile Radius Map



**BTA** BTA Oil Producers, LLC

**8105 JV-P Mesa #20H - 1 Mile Radius Map**

SHL: 330°FWL & 630°FWL Sec. 11, T26S, R32E

BHL: 230°FWL & 930°FWL Sec. 11, T26S, R32E

Lea, County, New Mexico

**WELL SYMBOLS**

- ★ Proposed Location
- Location Only
- Drilling Well
- Drilled, Waiting on Completion
- Oil Well
- ⊙ Gas Well
- ⊙ Dry Hole
- ⊙ Injection Well
- ⊙ Pilot Hole

**REMARKS**

8105 JV-P Mesa #20H Highlighted in Yellow  
Only Wells Inside a Mile Radius of Surface &  
Bottom Hole Location Labeled

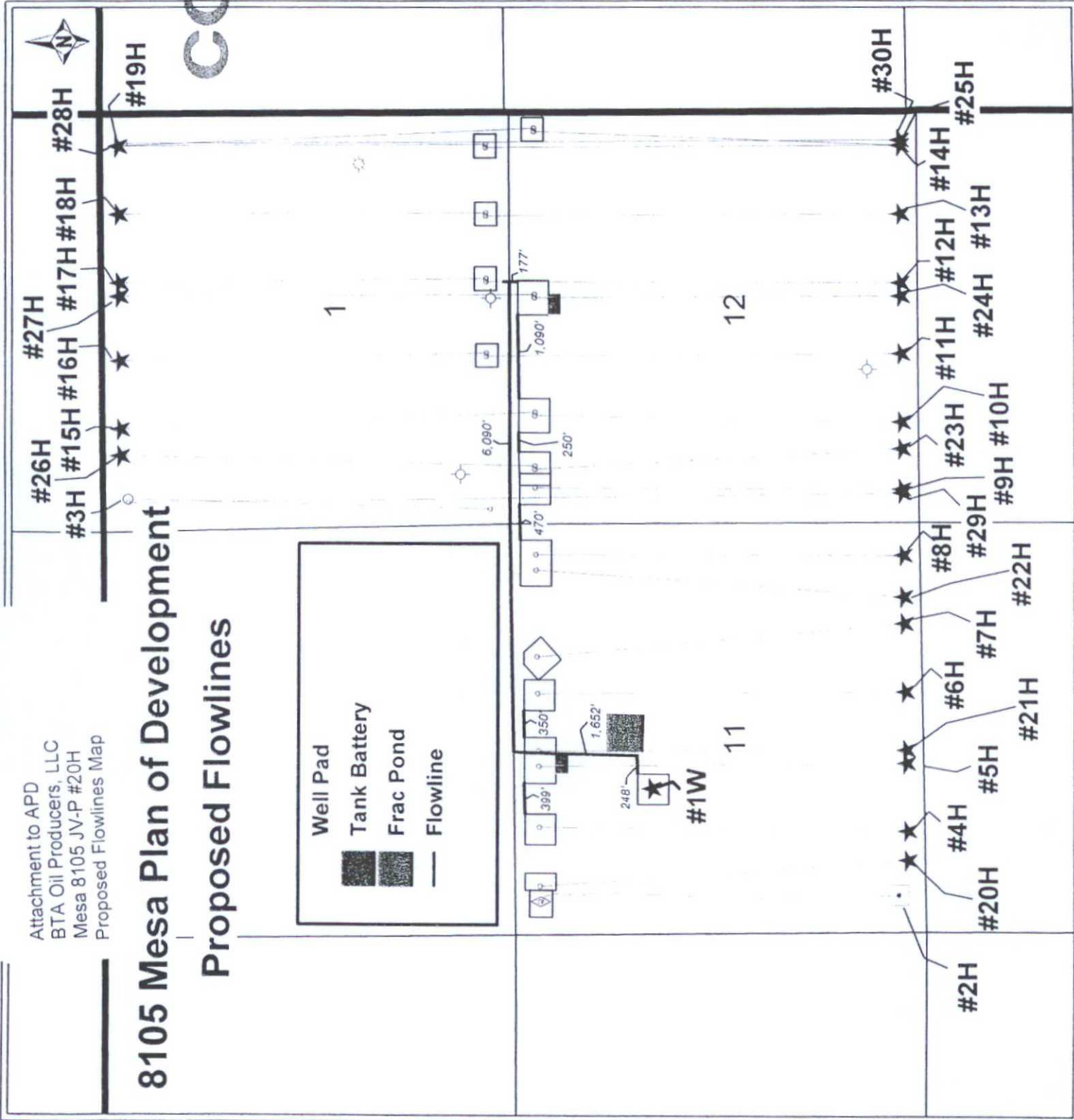
By: JHB



January 12, 2015

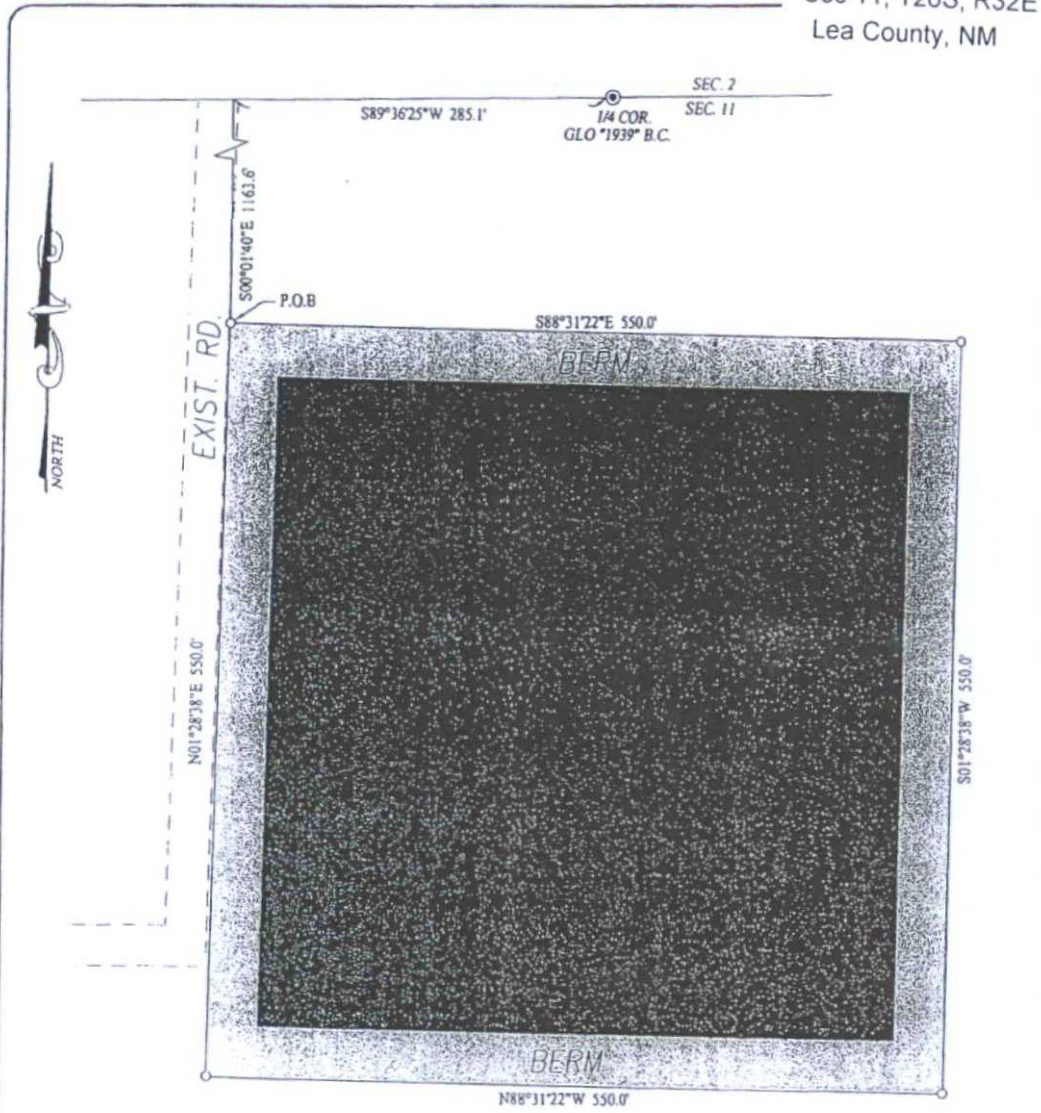
Y  
L  
O  
C

## Proposed Flowlines



# COPY

Attachment to APD  
BTA Oil Producers, LLC  
Mesa 8105 JV-P #20H  
Sec 11, T26S, R32E  
Lea County, NM



#### DESCRIPTION:

A TRACT FOR A FRAC POND SITUATED IN THE NORTHWEST QUARTER OF SECTION 11, TOWNSHIP 26 SOUTH, RANGE 32 EAST, N.M.P.M., EDDY COUNTY, NEW MEXICO AND BEING MORE PARTICULARLY DESCRIBED AS FOLLOWS:

BEGINNING AT THE NORTHWEST CORNER WHICH LIES S89°36'25\"W 285.1 FEET AND S00°01'40\"E 1163.6 FEET FROM THE NORTH 1/4 CORNER; THEN S88°31'22\"E 550.0 FEET; THEN S01°28'38\"W 550.0 FEET; THEN N88°31'22\"W 550.0 FEET; THEN N01°28'38\"E 550.0 FEET TO THE POINT OF BEGINNING AND CONTAINING 6.94 ACRES MORE OR LESS.

#### NOTE

BEARINGS SHOWN HEREON ARE MERCATOR GRID AND CONFORM TO THE NEW MEXICO COORDINATE SYSTEM \"NEW MEXICO EAST ZONE\" NORTH AMERICAN DATUM 1983. DISTANCES ARE SURFACE VALUES.

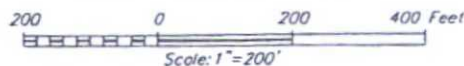
I, RONALD J. EIDSON, NEW MEXICO PROFESSIONAL SURVEYOR No. 3239, DO HEREBY CERTIFY THAT THIS SURVEY PLAN AND THE ACTUAL SURVEY ON THE GROUND UPON WHICH IT IS BASED WERE PERFORMED BY ME OR UNDER MY DIRECT SUPERVISION THAT I AM RESPONSIBLE FOR THIS SURVEY; THAT THIS SURVEY MEETS THE MINIMUM STANDARDS FOR SURVEYING IN NEW MEXICO; AND THAT THIS IS TRUE AND CORRECT TO THE BEST OF MY KNOWLEDGE AND BELIEF.

RONALD J. EIDSON

DATE: 11/10/14

#### LEGEND

⊙ DENOTES FOUND CORNER AS NOTED



## BTA OIL PRODUCERS, LLC

SURVEY FOR A FRAC POND TRACT  
SITUATED IN THE NW/4 OF SECTION 11,  
TOWNSHIP 26 SOUTH, RANGE 32 EAST, N.M.P.M.  
EDDY COUNTY, NEW MEXICO

Survey Date: 10/16/14	CAD Date: 11/10/14	Drawn By: LSL
W.O. No.: 14111127	Rev.	Rel. W.O.:

Sheet 1 of 1

PROVIDING SURVEYING SERVICES  
SINCE 1946  
**JOHN WEST SURVEYING COMPANY**  
412 N. DAL PASO HOBBS, N.M. 88240  
(575) 393-3117 www.jwsc.biz  
TBLPL# 10021000

© DRAFTING