

COPY

DISTRICT I
1625 N. French Dr., Hobbs, NM 88240
Phone: (575) 393-6161 Fax: (575) 393-6720
DISTRICT II
511 S. First St., Artesia, NM 88210
Phone: (575) 748-1283 Fax: (575) 748-9720
DISTRICT III
1000 Rio Brazos Road, Aztec, NM 87410
Phone: (505) 334-6178 Fax: (505) 334-6170
DISTRICT IV
1220 S. St. Francis Dr., Santa Fe, NM 87505
Phone: (505) 476-3460 Fax: (505) 476-3462

State of New Mexico
Energy, Minerals & Natural Resources Department
OIL CONSERVATION DIVISION
1220 South St. Francis Dr.
Santa Fe, New Mexico 87505

HOBBS OGD

Form C-102
Revised August 1, 2011
Submit one copy to appropriate
District Office

OCT 07 2015

AMENDED REPORT

RECEIVED

WELL LOCATION AND ACREAGE DEDICATION PLAT

API Number 30-025-42852	Pool Code 97838	Pool Name Jennings; Upper Bone Spring Shale
Property Code 305301	Property Name MESA 8105 JV-P	Well Number 17H
OGRID No. 260297	Operator Name BTA OIL PRODUCERS, LLC	Elevation 3324'

Surface Location

UL or lot No	Section	Township	Range	Lot Idn	Feet from the	North/South line	Feet from the	East/West line	County
O	1	26-S	32-E		310	SOUTH	2138	EAST	LEA

Bottom Hole Location If Different From Surface

UL or lot No	Section	Township	Range	Lot Idn	Feet from the	North/South line	Feet from the	East/West line	County
B	1	26-S	32-E		230	NORTH	2178	EAST	LEA

Dedicated Acres 160	Joint or Infill	Consolidation Code	Order No.
------------------------	-----------------	--------------------	-----------

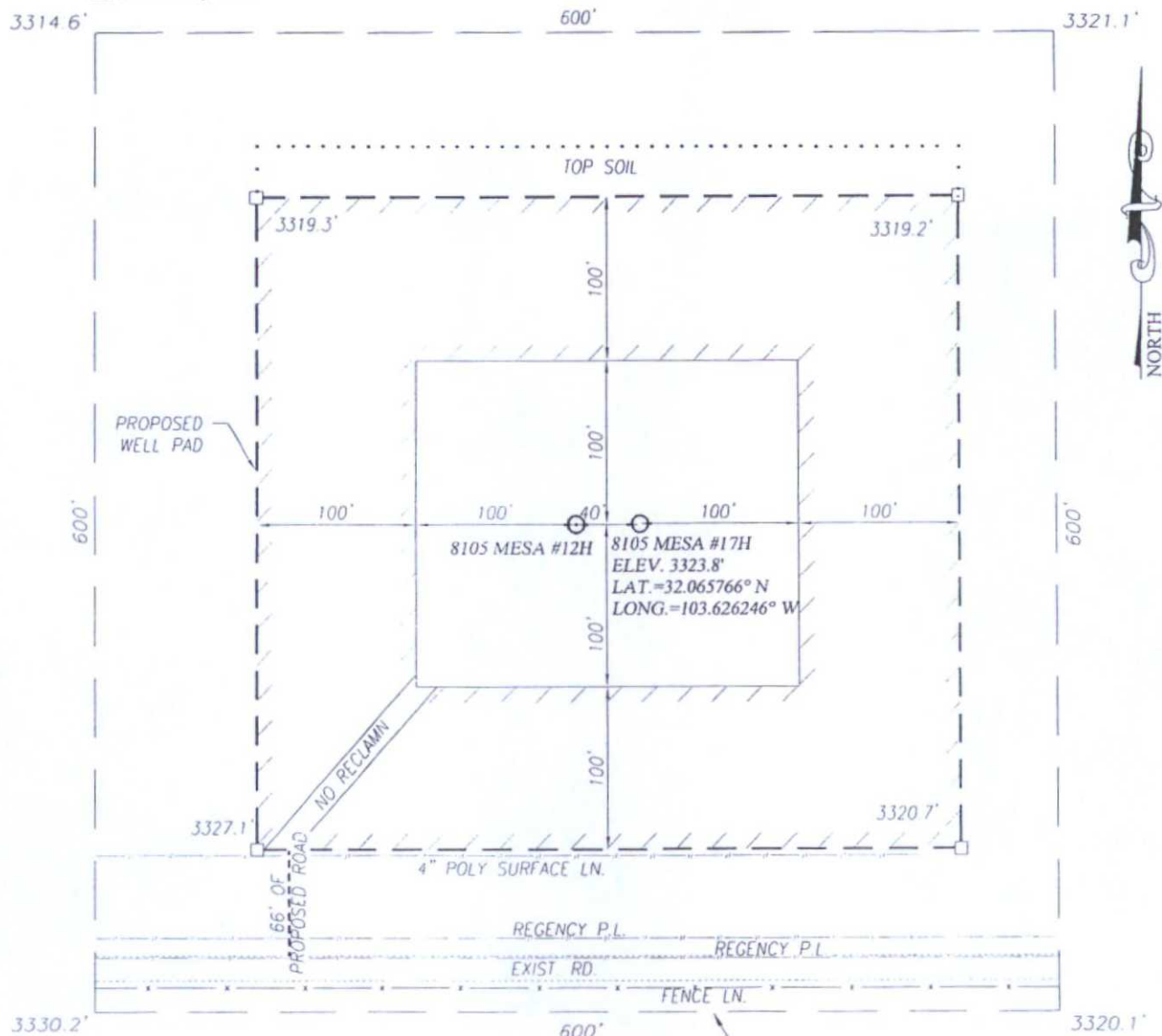
NO ALLOWABLE WILL BE ASSIGNED TO THIS COMPLETION UNTIL ALL INTERESTS HAVE BEEN CONSOLIDATED OR A NON-STANDARD UNIT HAS BEEN APPROVED BY THE DIVISION

<p>BOTTOM HOLE LOCATION Y= 393190.9 N X= 718943.8 E</p> <p>CORNER COORDINATES TABLE</p> <table><tr><td>A</td><td>-</td><td>Y= 393415.0 N, X= 718447.8 E</td></tr><tr><td>B</td><td>-</td><td>Y= 393430.8 N, X= 719783.4 E</td></tr><tr><td>C</td><td>-</td><td>Y= 388065.8 N, X= 719852.3 E</td></tr><tr><td>D</td><td>-</td><td>Y= 388053.0 N, X= 718523.7 E</td></tr></table> <p>GEODETIC COORDINATES NAD 27 NME</p> <p>SURFACE LOCATION Y= 388368.0 N X= 719039.2 E</p> <p>LAT. = 32.065766° N LONG. = 103.626246° W</p>	A	-	Y= 393415.0 N, X= 718447.8 E	B	-	Y= 393430.8 N, X= 719783.4 E	C	-	Y= 388065.8 N, X= 719852.3 E	D	-	Y= 388053.0 N, X= 718523.7 E	<p>OPERATOR CERTIFICATION I hereby certify that the information herein is true and complete to the best of my knowledge and belief, and that this organization either owns a working interest or unleased mineral interest in the land including the proposed bottom hole location or has a right to drill this well at this location pursuant to a contract with an owner of such mineral or working interest, or to a voluntary pooling agreement or a compulsory pooling order heretofore entered by the division.</p> <p><i>Kayla McConnell</i> 2/12/2015 Signature Date</p> <p>Kayla McConnell Printed Name</p> <p>kmcconnell@btaoil.com E-mail Address</p> <p>SURVEYOR CERTIFICATION I hereby certify that the well location shown on this plat was plotted from field notes of actual surveys made by me or under my supervision, and that the same is true and correct to the best of my belief.</p> <p>AUGUST 20, 2014 Date of Survey</p> <p>Signature & Seal of Professional Surveyor</p> <p><i>Ronald J. Eidson</i> 09/16/2014 Certificate Number Gary G. Eidson 12641 Ronald J. Eidson 3239</p> <p>LSL TWSC W O 14 11 0828</p>
A	-	Y= 393415.0 N, X= 718447.8 E											
B	-	Y= 393430.8 N, X= 719783.4 E											
C	-	Y= 388065.8 N, X= 719852.3 E											
D	-	Y= 388053.0 N, X= 718523.7 E											

OCT 09 2015

BTA Oil Producers, LLC
 Mesa 8105 JV-P #17H
**Location Plat – Interim Reclamation
 & Gas line**
 Sec 1, T26S, R32E
 Lea County, NM

COPY



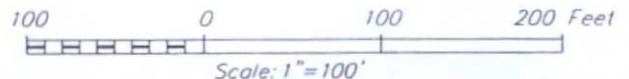
NOTE:
 1) SEE "LOCATION VERIFICATION MAP"
 FOR PROPOSED ROAD LOCATION.

ARCHEOLOGICAL SURVEY BOUNDARY

//// DENOTES AREA TO BE RECLAIMED

DIRECTIONS TO 8105 MESA #17H:

FROM THE INTERSECTION OF HWY 18 AND HWY. 128 (JAL N.M.)
 GO WEST ON HWY 128 APPROX. 29.2 MILES TURN LEFT AND
 GO SOUTH ON CO. RD. J1 (ORLA RD.) APPROX 10.4 MILES
 TURN LEFT AND GO EAST APPROX. 2.7 MILES TO STAKED ROAD,
 FOLLOW STAKES NORTH 66' TO THE LOCATION.



BTA OIL PRODUCERS, LLC

8105 MESA #17H WELL
 LOCATED 310 FEET FROM THE SOUTH LINE
 AND 2138 FEET FROM THE EAST LINE OF SECTION 1,
 TOWNSHIP 26 SOUTH, RANGE 32 EAST, N.M.P.M.,
 LEA COUNTY, NEW MEXICO



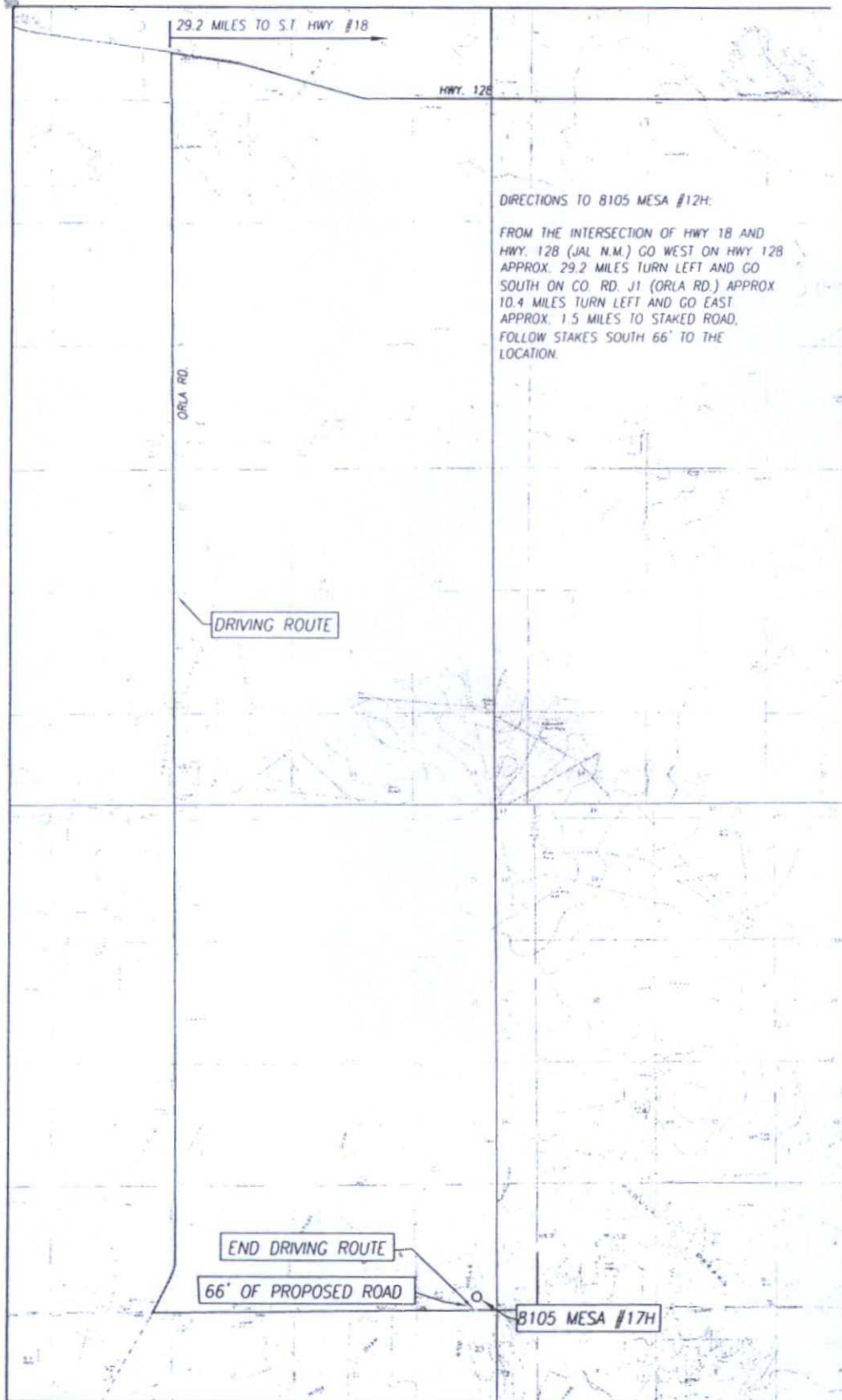
PROVIDING SURVEYING SERVICES
 SINCE 1946
JOHN WEST SURVEYING COMPANY
 412 N. DAL PASO HOBBS, N.M. 88240
 (575) 393-3117 www.jwsc.biz
 TBPLS# 10021000

Survey Date: 8/20/14	CAD Date: 8/25/14	Drawn By: LSL
W.O. No.: 14110828	Rev: .	Rel. W.O.: Sheet 1 of 1

COPY

LOCATION VERIFICATION MAP

Attachment to APD
BTA Oil Producers, LLC
Mesa 8105 JV-P #17H
Sec 1, T26S, R32E
Lea County, NM



SEC. 1 TWP. 26-S RGE. 32-E
COUNTY LEA STATE NEW MEXICO
DESCRIPTION 310' FSL & 2138' FEL
ELEVATION 3324'
OPERATOR BTA OIL PRODUCERS, LLC
LEASE 8105 MESA
U.S.G.S. TOPOGRAPHIC MAP
PADUCA BREAKS WEST, N.M. SURVEY N.M.P.M.

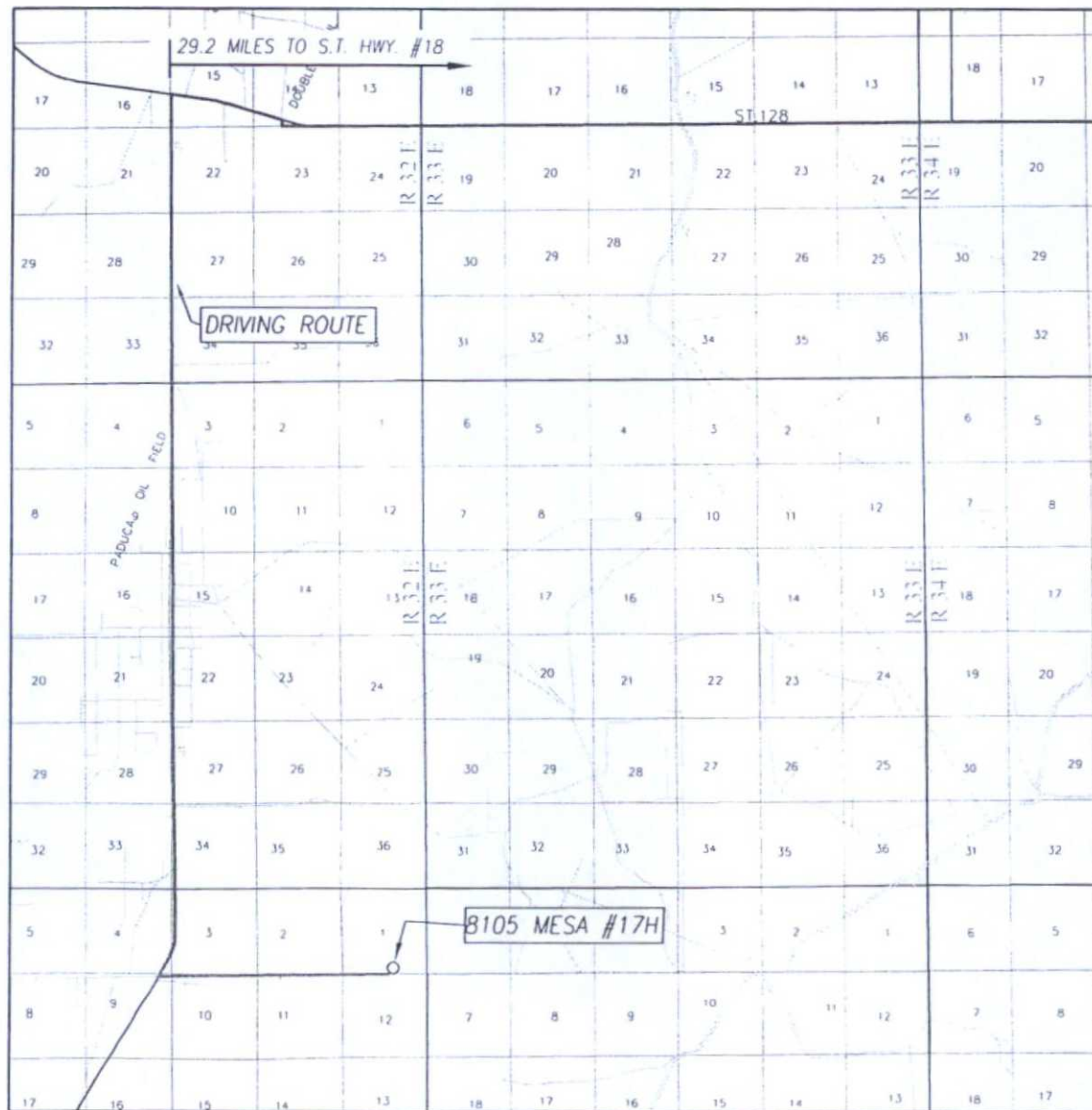
SCALE: 1" = 5280'

CONTOUR INTERVAL:
PADUCA BREAKS WEST, N.M. - 10'
PADUCA BREAKS NW, N.M. - 10'

PROVIDING SURVEYING SERVICES
SINCE 1946
JOHN WEST SURVEYING COMPANY
412 N. DAL PASO HOBBS, N.M. 88240
(575) 393-3117 www.jwsc.biz
T8PLS# 10021000

VICINITY MAP

COPY



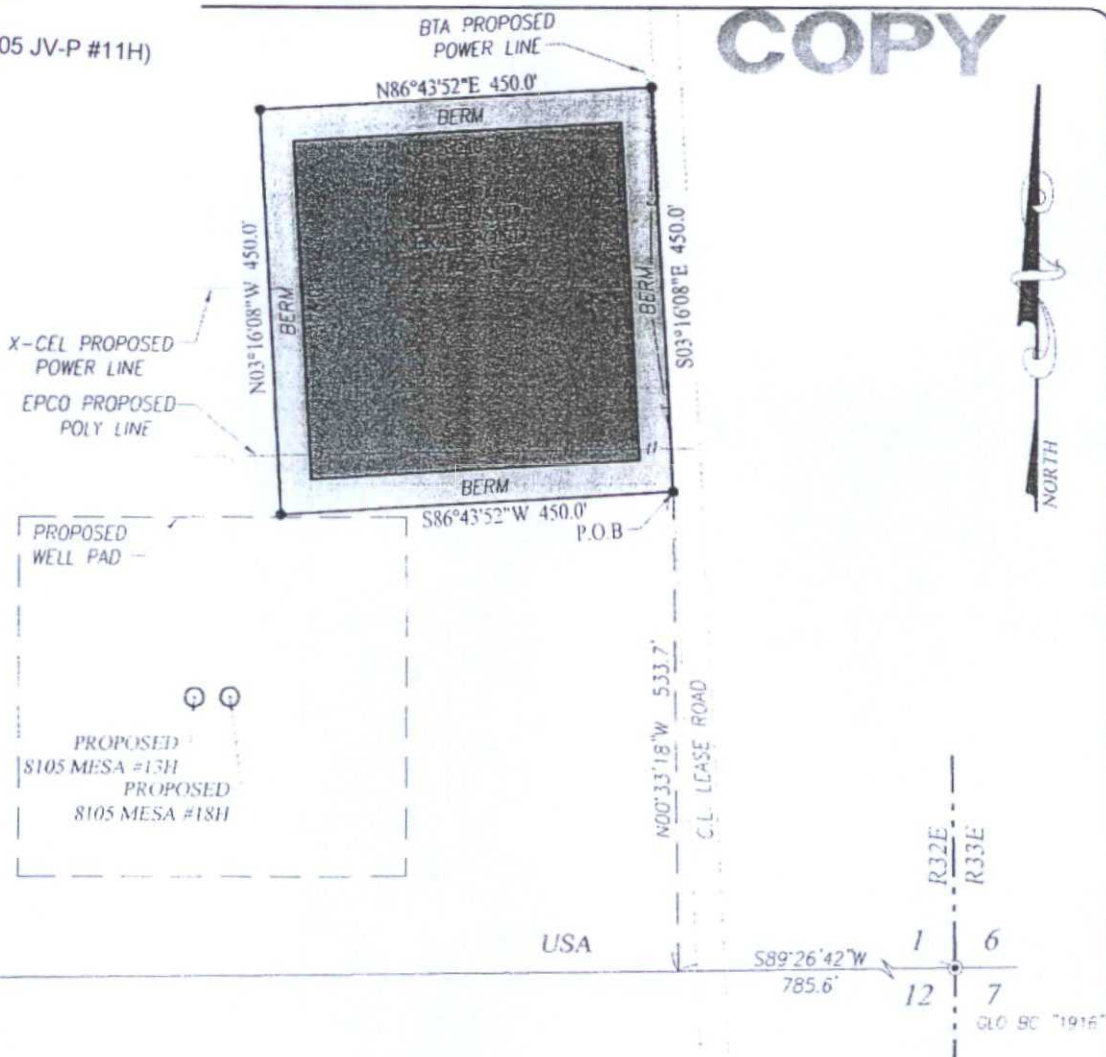
SCALE: 1" = 2 MILES
DRIVING ROUTE: SEE LOCATION VERIFICATION MAP

SEC. 1 TWP. 26-S RGE. 32-E
SURVEY N.M.P.M.
COUNTY LEA STATE NEW MEXICO
DESCRIPTION 310' FSL & 2138' FEL
ELEVATION 3324'
OPERATOR BTA OIL PRODUCERS, LLC
LEASE 8105 MESA

PROVIDING SURVEYING SERVICES
SINCE 1946
JOHN WEST SURVEYING COMPANY
412 N. DAL PASO HOBBS, N.M. 88240
(575) 393-3117 www.jwsc.biz
TBPLS# 10021000

BTA Oil Producers, LLC
Mesa 8105 JV-P #17H
Frac Pond
(permitted with Mesa 8105 JV-P #11H)
Sec 1, T26S, R32E
Lea County, NM

COPY



LEGEND

- DENOTES SET CORNER AS NOTED
- ⊙ DENOTES FOUND CORNER AS NOTED

NOTE

BEARINGS SHOWN HEREON ARE MERCATOR GRID AND CONFORM TO THE NEW MEXICO COORDINATE SYSTEM "NEW MEXICO EAST ZONE" NORTH AMERICAN DATUM 1983. DISTANCES ARE SURFACE VALUES.

I, RONALD J. EIDSON, NEW MEXICO PROFESSIONAL SURVEYOR No. 3239, DO HEREBY CERTIFY THAT THIS SURVEY PLAT AND THE ACTUAL SURVEY ON THE GROUND UPON WHICH IT IS BASED WERE PERFORMED BY ME OR UNDER MY DIRECT SUPERVISION; THAT I AM RESPONSIBLE FOR THIS SURVEY; THAT THIS SURVEY MEETS THE MINIMUM STANDARDS FOR SURVEYING IN NEW MEXICO; AND THAT IT IS TRUE AND CORRECT TO THE BEST OF MY KNOWLEDGE AND BELIEF.

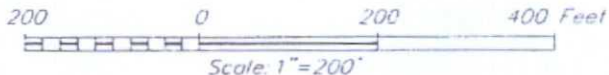
RONALD J. EIDSON

DATE: 01/23/2015

DESCRIPTION:

A TRACT FOR A FRAC POND SITUATED IN THE SOUTHEAST QUARTER OF SECTION 1, TOWNSHIP 26 SOUTH, RANGE 32 EAST, N.M.P.M., LEA COUNTY, NEW MEXICO AND BEING MORE PARTICULARLY DESCRIBED AS FOLLOWS:

BEGINNING AT THE SOUTHEAST CORNER OF THIS TRACT WHICH LIES S89°26'42"W 785.6 FEET AND N00°33'18"W 533.7 FEET FROM THE SOUTHEAST CORNER; THEN S86°43'52"W 450.0 FEET; THEN N03°16'08"W 450.0 FEET; THEN N86°43'52"E 450.0 FEET; THEN S03°16'08"E 450.0 FEET TO THE POINT OF BEGINNING AND CONTAINING 4.65 ACRES MORE OR LESS.



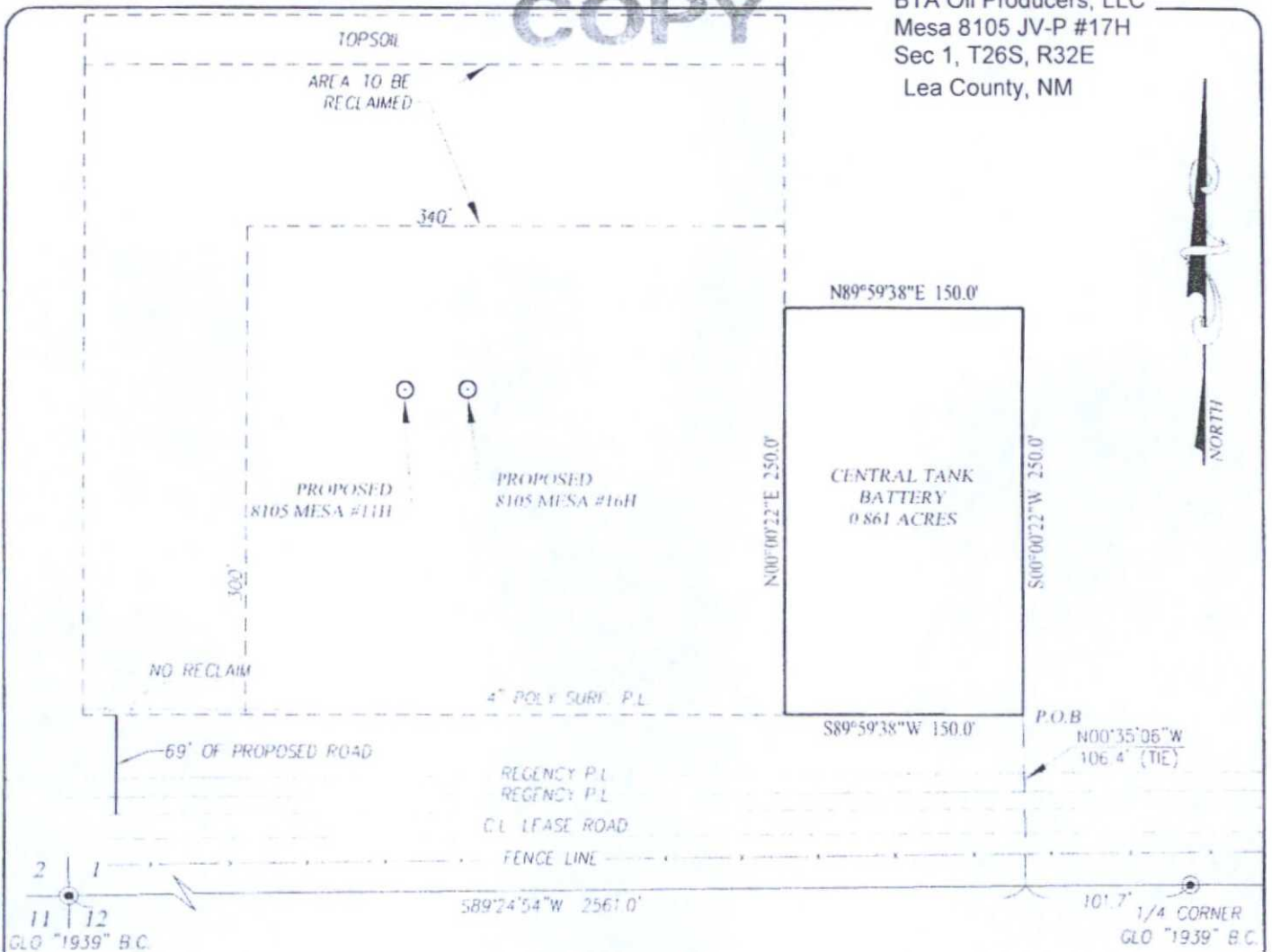
BTA OIL PRODUCERS, LLC

**SURVEY FOR A FRAC POND TRACT
SITUATED IN THE SE/4 OF SECTION 1,
TOWNSHIP 26 SOUTH, RANGE 32 EAST, N.M.P.M.
LEA COUNTY, NEW MEXICO**

Survey Date: 1/16/15	CAD Date: 1/22/15	Drawn By: ACK
W.O. No.: 15110029	Rev: .	Rel. W.O.: 14111113
		Sheet 1 of 1



PROVIDING SURVEYING SERVICES
SINCE 1946
JOHN WEST SURVEYING COMPANY
412 N. DAL PASO HOBBS, N.M. 88240
(575) 393-3117 www.jwsc.biz
TBPLS# 10021000



LEGEND

- DENOTES FOUND CORNER AS NOTED

NOTE

BEARINGS SHOWN HEREON ARE MERCATOR GRID AND CONFORM TO THE NEW MEXICO COORDINATE SYSTEM "NEW MEXICO EAST ZONE" NORTH AMERICAN DATUM 1983 DISTANCES ARE SURFACE VALUES

I, RONALD J. EIDSON, NEW MEXICO PROFESSIONAL SURVEYOR No. 3239, DO HEREBY CERTIFY THAT THIS SURVEY PLAT AND THE ACTUAL SURVEY ON THE GROUND UPON WHICH IT IS BASED WERE PERFORMED BY ME OR UNDER MY DIRECT SUPERVISION, THAT I AM RESPONSIBLE FOR THIS SURVEY, THAT THIS SURVEY MEETS THE MINIMUM STANDARDS FOR SURVEYING IN NEW MEXICO, AND THAT IT IS TRUE AND CORRECT TO THE BEST OF MY KNOWLEDGE AND BELIEF

RONALD J. EIDSON

DATE: 08/26/2014

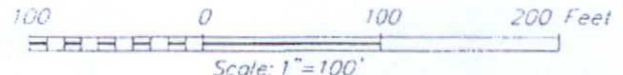


PROVIDING SURVEYING SERVICES
SINCE 1946
JOHN WEST SURVEYING COMPANY
412 N. DAL PASO HOBBS, N.M. 88240
(575) 393-3117 www.jwsc.biz
TBPLS# 10021000

DESCRIPTION:

A PROPOSED TANK BATTERY TRACT SITUATED IN THE SOUTHWEST QUARTER OF SECTION 1, TOWNSHIP 26 SOUTH, RANGE 32 EAST, N.M.P.M., LEA COUNTY, NEW MEXICO AND BEING MORE PARTICULARLY DESCRIBED AS FOLLOWS:

BEGINNING AT THE SOUTHEAST CORNER OF THIS TRACT WHICH LIES S89°24'54"W 101.7 FEET AND N00°35'06"W 106.4 FEET FROM THE SOUTH 1/4 CORNER; THEN S89°59'38"W 150.0 FEET; THEN N00°00'22"E 250.0 FEET; THEN N89°59'38"E 150.0 FEET; THEN S00°00'22"W 250.0 FEET TO THE POINT OF BEGINNING AND CONTAINING 0.861 ACRES MORE OR LESS.



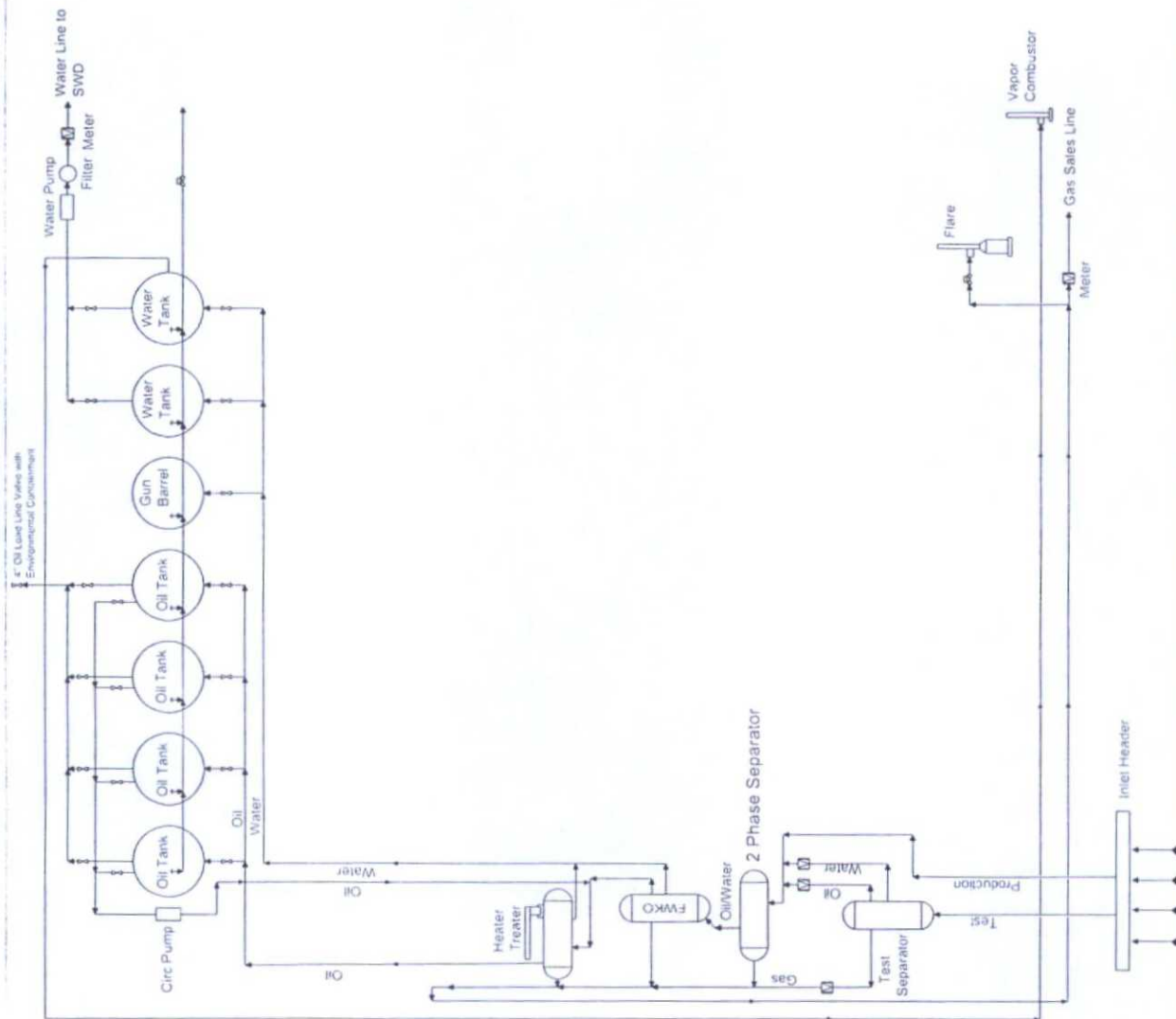
BTA OIL PRODUCERS, LLC

SURVEY FOR THE 8105 MESA CENTRAL TANK
BATTERY SITE IN THE SW/4 OF SECTION 1,
TOWNSHIP 26 SOUTH, RANGE 32 EAST, N.M.P.M.
LEA COUNTY, NEW MEXICO

Survey Date: 8/16/14	CAD Date: 8/22/14	Drawn By: ACK
W.O. No.: 14110872	Rev:	Rel W.O.:
Sheet 1 of 1		

BTA Oil Producers, LLC
Mesa 8105 JV-P #17H
Proposed Central Tank Battery
Sec 1, T26S, R32E
Lea County, NM

COPY



NOT TO SCALE

BTA Oil Producers, LLC

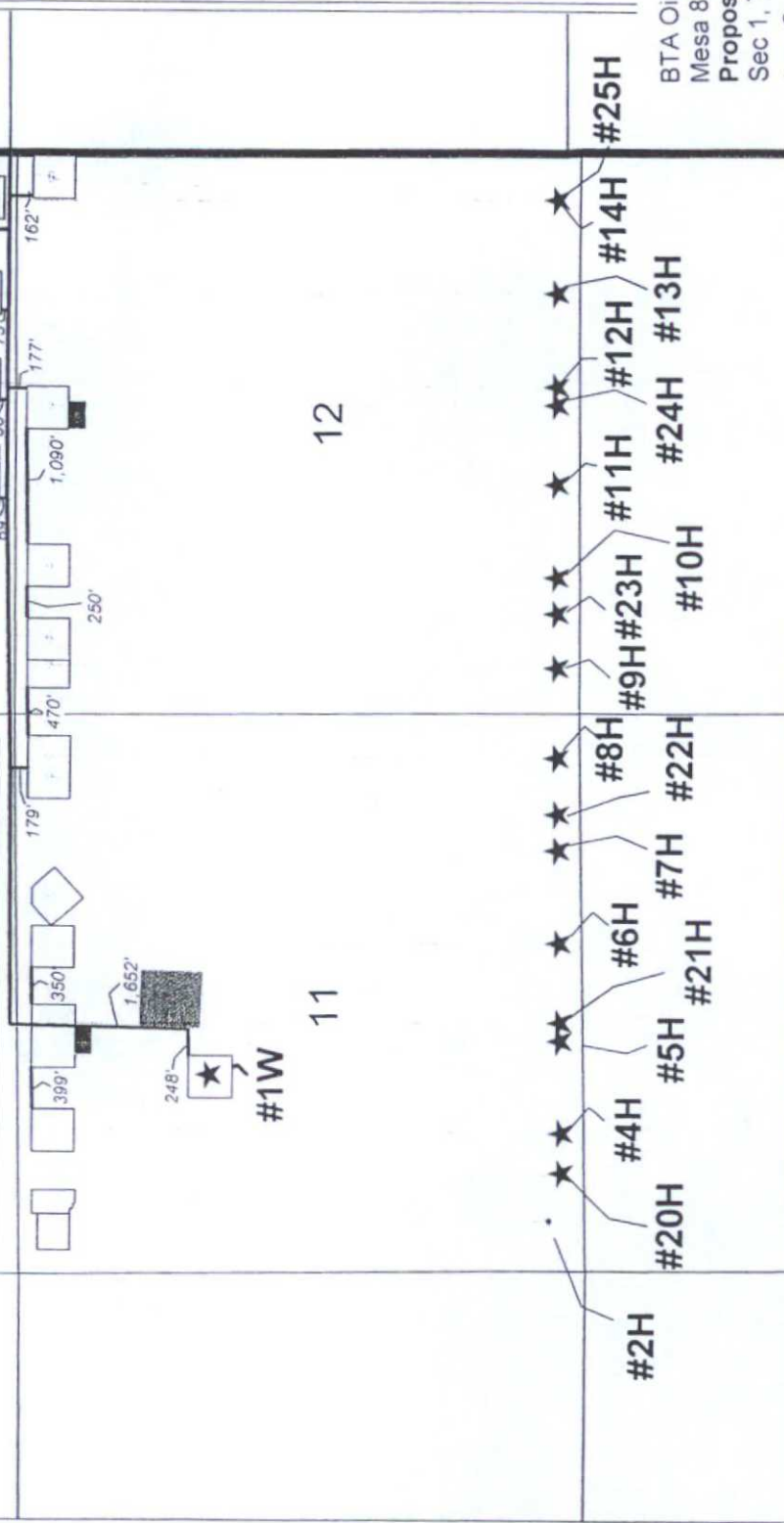
-Proposed-
Production Facilities Diagram

Mesa 8105 JV-P
Section 1, T26S-R32E
Lea County, NM

COPY

8105 Mesa Plan of Development

Proposed Flowlines



BHL: 1 Mile Radius

BTA Oil Producers, LLC
Mesa 8105 JV-P #17H
1 Mile Radius Map
Sec 1, T26S, R32E
Lea County, NM



BTA Oil Producers, LLC

8105 JV-P Mesa #17H - 1 Mile Radius Map

SHL: 310'FSL & 2138'FEL Sec.1,T26S,R32E

BHL: 230'FNL & 2178'FEL Sec.1,T26S,R32E

Lea, County, New Mexico

WELL SYMBOLS

- | | |
|--|--------------------------------|
| | WELL SYMBOLS |
| | Proposed Location |
| | Location Only |
| | Drilling Well |
| | Drilled, Waiting on Completion |
| | Oil Well |
| | Gas Well |
| | Dry Hole |
| | Dry Hole With Oil & Gas Show |
| | Pilot Hole |

REMARKS

8105 JV-P Mesa #17H Bottom Hole Location
Highlighted in Yellow

Only Wells Inside a Mile Radius of Surface & Bottom Hole Locations Labeled

Ву: ЈНВ

A vertical number line with tick marks at 0, 2,500, and 5,000. The word "FEET" is written vertically next to the line.

February 13, 2015

PETRA 2/13/2015 10:05:07 AM