

HOBBS OCD

OCT 19 2015

Form C-102

District I
1625 N. French Dr., Hobbs, NM 88240
Phone: (575) 393-6161 Fax: (575) 393-0720
District II
811 S. First St., Artesia, NM 88210
Phone: (575) 748-1283 Fax: (575) 748-9720
District III
1000 Rio Brazos Road, Aztec, NM 87410
Phone: (505) 334-6178 Fax: (505) 334-6170
District IV
1220 S. St. Francis Dr., Santa Fe, NM 87505
Phone: (505) 476-3460 Fax: (505) 476-3462

State of New Mexico
Energy, Minerals & Natural Resources Department
OIL CONSERVATION DIVISION
1220 South St. Francis Dr.
Santa Fe, NM 87505

Revised August 1, 2011

RECEIVED Submit one copy to appropriate
District Office

☐ AMENDED REPORT

WELL LOCATION AND ACREAGE DEDICATION PLAT

¹ API Number	² Pool Code	³ Pool Name
⁴ Property Code	⁵ Property Name RED RAIDER 25 BKS STATE	
⁷ OGRID No. 270329	⁸ Operator Name ENDURANCE RESOURCES, LLC	
	⁶ Well Number 3H	⁹ Elevation 3503.6

¹⁰ Surface Location

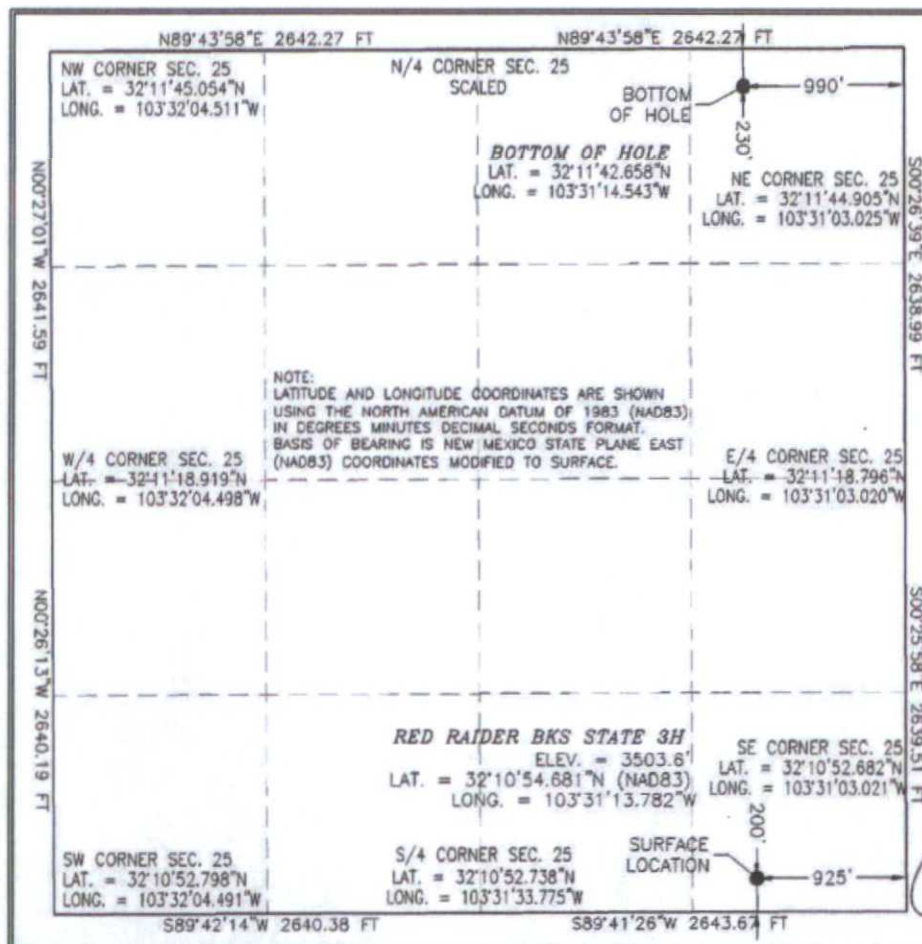
UL or lot no.	Section	Township	Range	Lot Idn	Feet from the	North/South line	Feet from the	East/West line	County
P	25	24 S	33 E		200	SOUTH	925	EAST	LEA

¹¹ Bottom Hole Location If Different From Surface

UL or lot no.	Section	Township	Range	Lot Idn	Feet from the	North/South line	Feet from the	East/West line	County
B	25	24 S	33 E		230	NORTH	990	EAST	LEA

¹² Dedicated Acres	¹³ Joint or Infill	¹⁴ Consolidation Code	¹⁵ Order No.
-------------------------------	-------------------------------	----------------------------------	-------------------------

No allowable will be assigned to this completion until all interests have been consolidated or a non-standard unit has been approved by the division.

¹⁶ OPERATOR CERTIFICATION

I hereby certify that the information contained herein is true and complete to the best of my knowledge and belief, and that this organization either owns a working interest or unleased mineral interest in the land including the proposed bottom hole location or has a right to drill this well at this location pursuant to a contract with an owner of such a mineral or working interest, or to a voluntary pooling agreement or a compulsory pooling order heretofore entered by the division.

Tinlee Tilton 10/13/2015
Signature Date

TINLEE TILTON
Printed Name

tinlee@enduranceresources
E-mail Address

llc.com

¹⁷ SURVEYOR CERTIFICATION

I hereby certify that the well location shown on this plat was plotted from field notes of actual surveys made by me or under my supervision, and that the same is true and correct to the best of my belief.

OCTOBER 2015
Date of Survey

Simon F. Jaramillo
Signature and Seal of Professional Surveyor

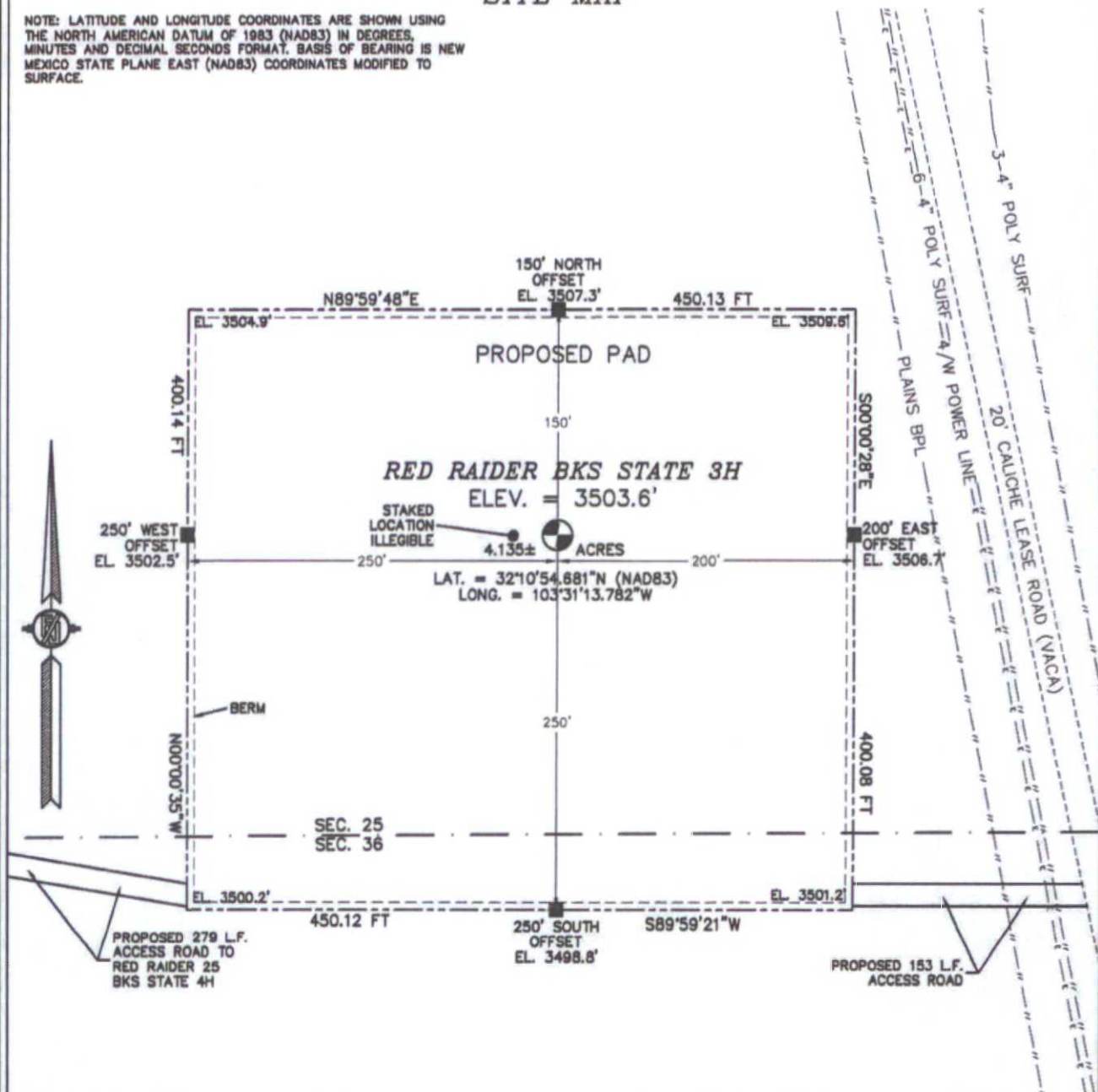
Certificate Number: SIMON F. JARAMILLO, PLS 12797

SURVEY NO. 4260

OCT 22 2015

**SECTION 25, TOWNSHIP 24 SOUTH, RANGE 33 EAST, N.M.P.M.
LEA COUNTY, STATE OF NEW MEXICO
SITE MAP**

NOTE: LATITUDE AND LONGITUDE COORDINATES ARE SHOWN USING THE NORTH AMERICAN DATUM OF 1983 (NAD83) IN DEGREES, MINUTES AND DECIMAL SECONDS FORMAT. BASIS OF BEARING IS NEW MEXICO STATE PLANE EAST (NAD83) COORDINATES MODIFIED TO SURFACE.



0 10 50 100 200

SCALE 1" = 100'

DIRECTIONS TO LOCATION

FROM THE INTERSECTION OF STATE HWY 128 & CO. RD. 21
(DELAWARE BASIN) GO WEST ON STATE HWY 128 FOR APPROX. 1.4
MILES. GO SOUTHEAST ON CALICHE LEASE ROAD (VACA) FOR
APPROX. 2 MILES TO BEGIN ROAD SURVEY. GO WEST APPROX. 153'
TO SOUTHEAST CORNER OF PAD.

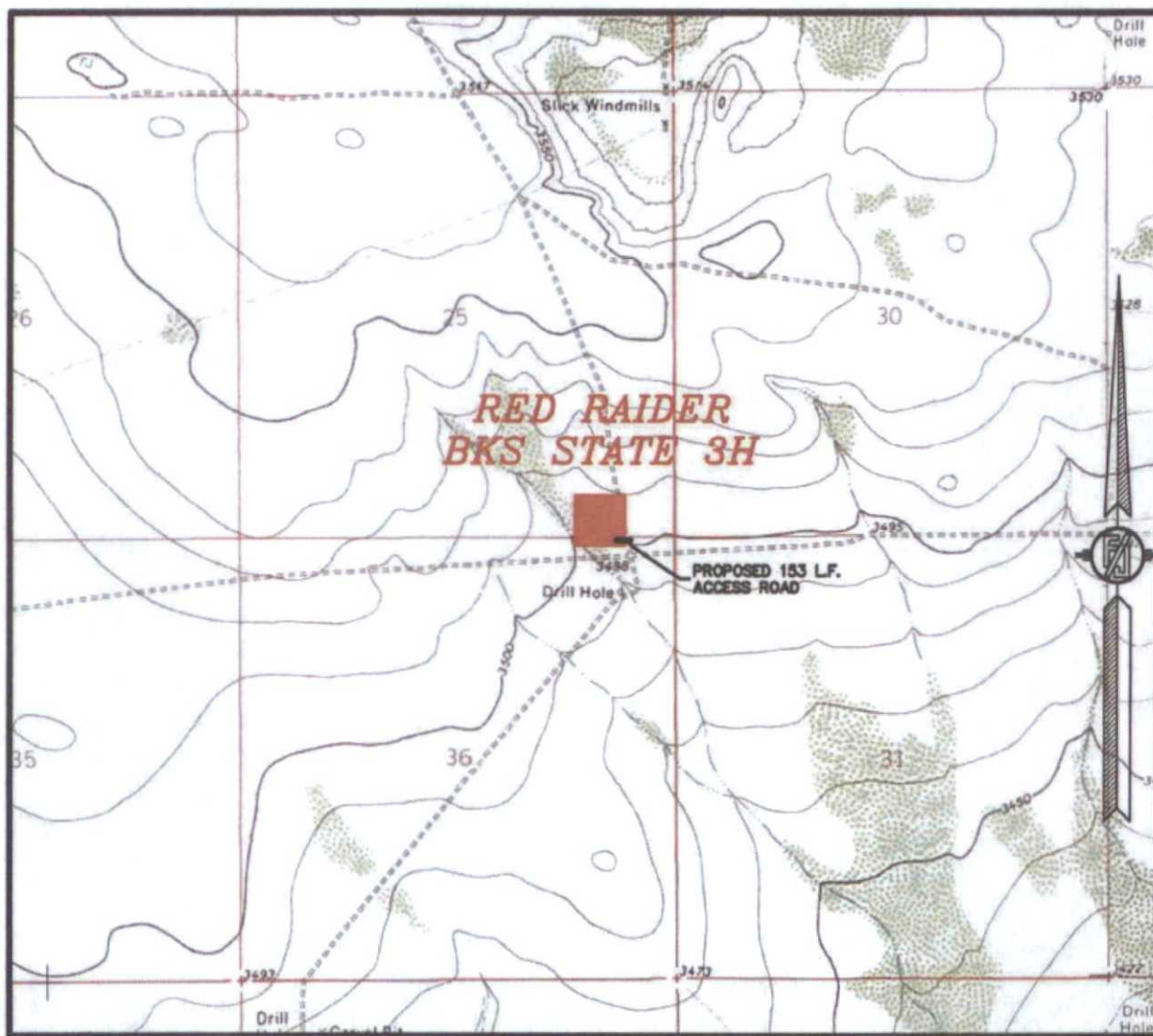
**ENDURANCE RESOURCES, LLC
RED RAIDER BKS STATE 3H
LOCATED 200 FT. FROM THE SOUTH LINE
AND 925 FT. FROM THE EAST LINE OF
SECTION 25, TOWNSHIP 24 SOUTH,
RANGE 33 EAST, N.M.P.M.
LEA COUNTY, STATE OF NEW MEXICO**

OCTOBER 7, 2015

SURVEY NO. 4260

MADRON SURVEYING, INC. 301 SOUTH CANAL (575) 234-3341 **CARLSBAD, NEW MEXICO**

SECTION 25, TOWNSHIP 24 SOUTH, RANGE 33 EAST, N.M.P.M.
LEA COUNTY, STATE OF NEW MEXICO
LOCATION VERIFICATION MAP



USGS QUAD MAP:
BELL LAKE

NOT TO SCALE

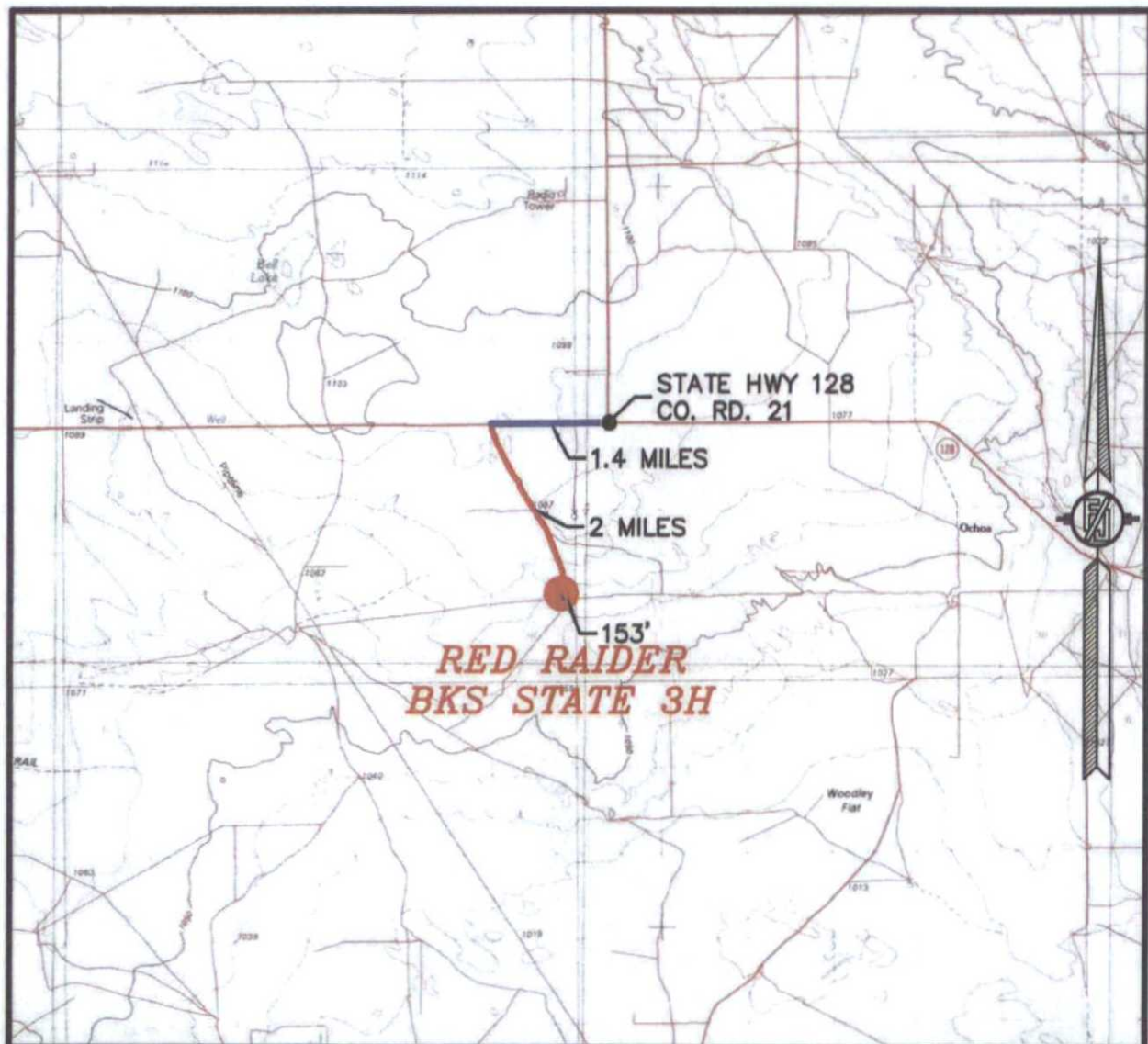
ENDURANCE RESOURCES, LLC
RED RAIDER BKS STATE 3H
LOCATED 200 FT. FROM THE SOUTH LINE
AND 925 FT. FROM THE EAST LINE OF
SECTION 25, TOWNSHIP 24 SOUTH,
RANGE 33 EAST, N.M.P.M.
LEA COUNTY, STATE OF NEW MEXICO

OCTOBER 7, 2015

MADRON SURVEYING, INC. 301 SOUTH CANAL (575) 234-3341 CARLSBAD, NEW MEXICO

SURVEY NO. 4260

SECTION 25, TOWNSHIP 24 SOUTH, RANGE 33 EAST, N.M.P.M.
LEA COUNTY, STATE OF NEW MEXICO
VICINITY MAP



DISTANCES IN MILES

NOT TO SCALE

DIRECTIONS TO LOCATION

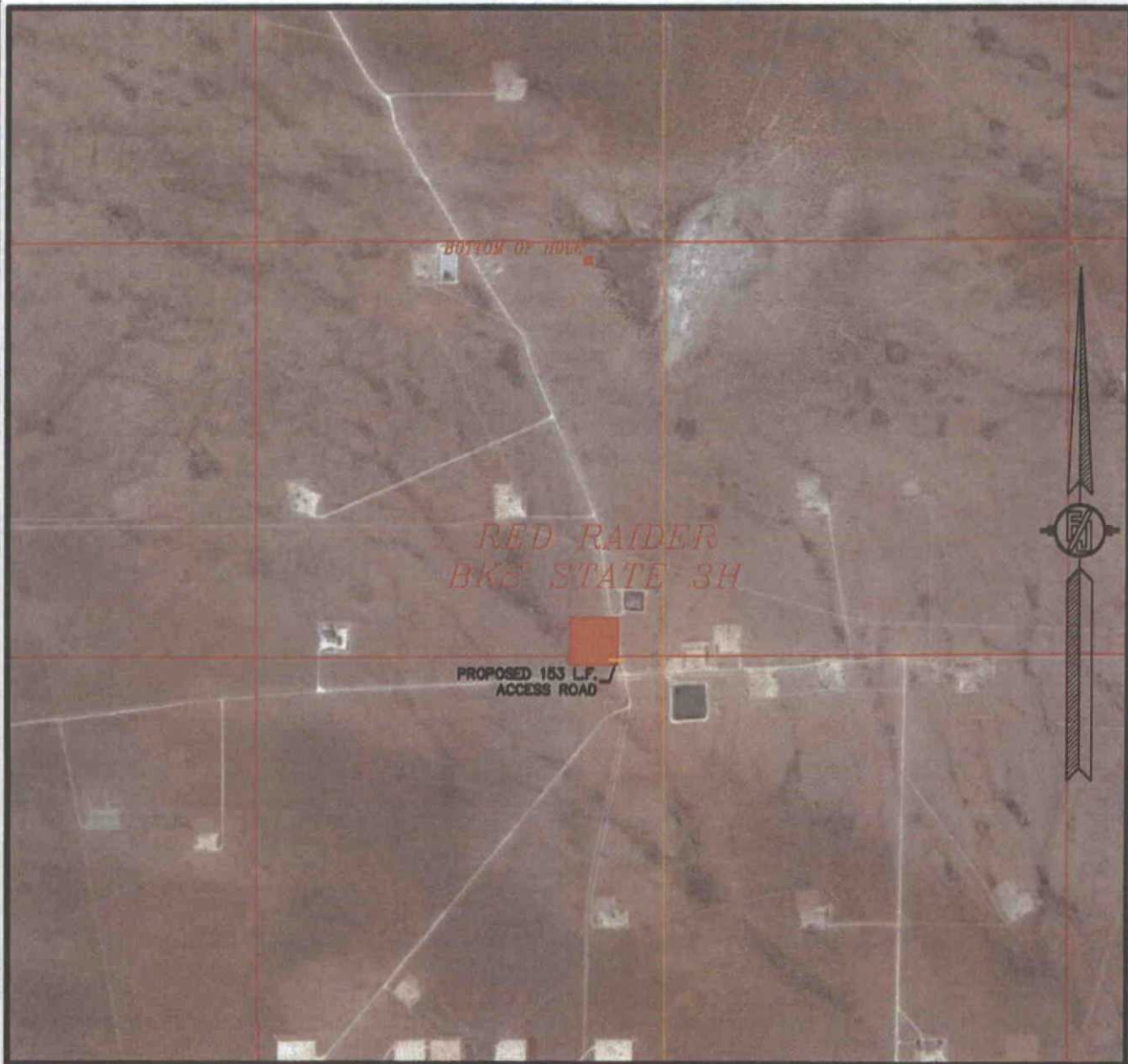
FROM THE INTERSECTION OF STATE HWY 128 & CO. RD. 21 (DELAWARE BASIN) GO WEST ON STATE HWY 128 FOR APPROX. 1.4 MILES. GO SOUTHEAST ON CALICHE LEASE ROAD (VACA) FOR APPROX. 2 MILES TO BEGIN ROAD SURVEY. GO WEST APPROX. 153' TO SOUTHEAST CORNER OF PAD.

ENDURANCE RESOURCES, LLC
RED RAIDER BKS STATE 3H
LOCATED 200 FT. FROM THE SOUTH LINE
AND 925 FT. FROM THE EAST LINE OF
SECTION 25, TOWNSHIP 24 SOUTH,
RANGE 33 EAST, N.M.P.M.
LEA COUNTY, STATE OF NEW MEXICO

OCTOBER 7, 2015

MADRON SURVEYING, INC. 301 SOUTH CANAL (575) 234-3341 CARLSBAD, NEW MEXICO SURVEY NO. 4260

SECTION 25, TOWNSHIP 24 SOUTH, RANGE 33 EAST, N.M.P.M.
LEA COUNTY, STATE OF NEW MEXICO
AERIAL PHOTO



NOT TO SCALE
AERIAL PHOTO:
GOOGLE EARTH
FEB. 2014

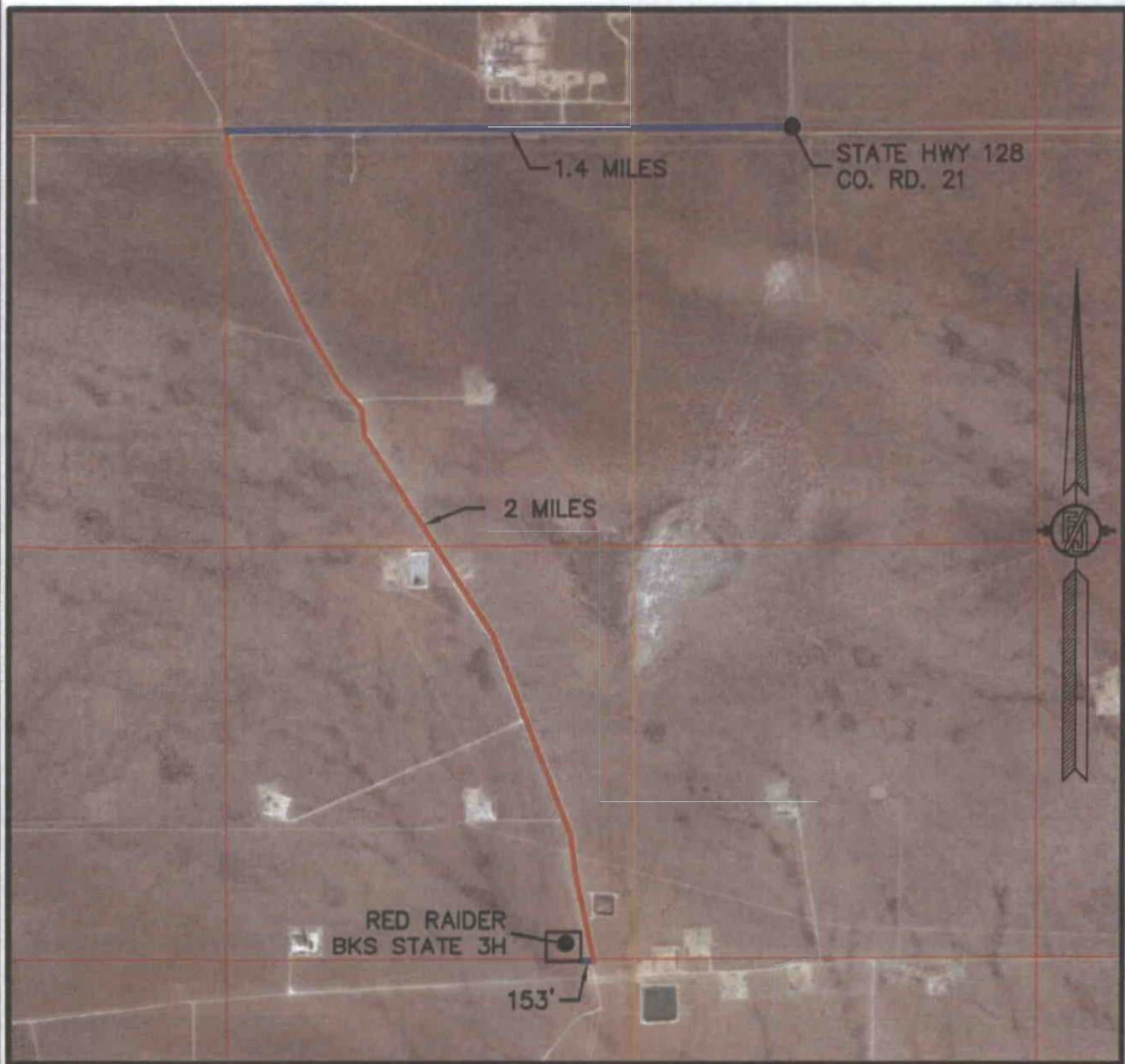
ENDURANCE RESOURCES, LLC
RED RAIDER BKS STATE 3H
LOCATED 200 FT. FROM THE SOUTH LINE
AND 925 FT. FROM THE EAST LINE OF
SECTION 25, TOWNSHIP 24 SOUTH,
RANGE 33 EAST, N.M.P.M.
LEA COUNTY, STATE OF NEW MEXICO

OCTOBER 7, 2015

SURVEY NO. 4260

MADRON SURVEYING, INC. 301 SOUTH CANAL (575) 234-3341 CARLSBAD, NEW MEXICO

SECTION 25, TOWNSHIP 24 SOUTH, RANGE 33 EAST, N.M.P.M.
LEA COUNTY, STATE OF NEW MEXICO
AERIAL ACCESS ROUTE MAP



NOT TO SCALE
AERIAL PHOTO:
GOOGLE EARTH
FEB. 2014

ENDURANCE RESOURCES, LLC
RED RAIDER BKS STATE 3H
LOCATED 200 FT. FROM THE SOUTH LINE
AND 925 FT. FROM THE EAST LINE OF
SECTION 25, TOWNSHIP 24 SOUTH,
RANGE 33 EAST, N.M.P.M.
LEA COUNTY, STATE OF NEW MEXICO

OCTOBER 7, 2015

SURVEY NO. 4260

MADRON SURVEYING, INC. 301 SOUTH CANAL (575) 234-3341 CARLSBAD, NEW MEXICO