

Submit 1 Copy To Appropriate District Office
District I - (575) 393-6161
1625 N. French Dr., Hobbs, NM 88240
District II - (575) 748-1283
811 S. First St., Artesia, NM 88210
District III - (505) 334-6178
1000 Rio Brazos Rd., Aztec, NM 87410
District IV - (505) 476-3460
1220 S. St. Francis Dr., Santa Fe, NM 87505

State of New Mexico
Energy, Minerals and Natural Resources

Form C-103
Revised July 18, 2013

OIL CONSERVATION DIVISION
1220 South St. Francis Dr.
Santa Fe, NM 87505

WELL API NO. 30-005-00878
5. Indicate Type of Lease STATE <input checked="" type="checkbox"/> FEE <input type="checkbox"/>
6. State Oil & Gas Lease No. 303735
7. Lease Name or Unit Agreement Name ROCK QUEEN UNIT
8. Well Number 46
9. OGRID Number 240974
10. Pool name or Wildcat CAPROCK; QUEEN

SUNDRY NOTICES AND REPORTS ON WELLS

(DO NOT USE THIS FORM FOR PROPOSALS TO DRILL OR TO DEEPEN OR PLUG BACK TO A DIFFERENT RESERVOIR. USE "APPLICATION FOR PERMIT" (FORM C-101) FOR SUCH PROPOSALS.)

1. Type of Well: Oil Well ☐ Gas Well ☐ Other INJECTION

2. Name of Operator

LEGACY RESERVES OPERATING LP

3. Address of Operator

PO BOX 10848, MIDLAND, TX 79702

4. Well Location

Unit Letter L : 1980 feet from the SOUTH line and 660 feet from the WEST line
Section 26 Township 13S Range 31E NMPM County CHAVES

11. Elevation (Show whether DR, RKB, RT, GR, etc.)
4413' KB

12. Check Appropriate Box to Indicate Nature of Notice, Report or Other Data

NOTICE OF INTENTION TO:

PERFORM REMEDIAL WORK ☐ PLUG AND ABANDON ☒
TEMPORARILY ABANDON ☐ CHANGE PLANS ☐
PULL OR ALTER CASING ☐ MULTIPLE COMPL ☐
DOWNHOLE COMMINGLE ☐
CLOSED-LOOP SYSTEM ☒
OTHER: ☐

REI
CO
CA

E-PERMITTING <SWD INJECTION>
CONVERSION RBDMS
RETURN TO TA
CSNG ENVIRO CHG LOC
INT TO PA DM P&A NR P&A R

OTHER: ☐

13. Describe proposed or completed operations. (Clearly state all pertinent details, and give pertinent dates, including estimated date of starting any proposed work). SEE RULE 19.15.7.14 NMAC. For Multiple Completions: Attach wellbore diagram of proposed completion or recompletion.

---SEE ATTACHED P&A PROCEDURE ALONG WITH CURRENT AND PROPOSED WELLBORE DIAGRAMS---

The Oil Conservation Division
MUST BE NOTIFIED 24 Hours
Prior to the beginning of operations

Spud Date:

Rig Release Date:

I hereby certify that the information above is true and complete to the best of my knowledge and belief.

SIGNATURE Laura Pina TITLE COMPLIANCE COORDINATOR DATE 10/19/2015

Type or print name LAURA PINA E-mail address: lpina@legacylp.com PHONE: 432-689-5200

For State Use Only

APPROVED BY: Mary Brown TITLE Dist Supervisor DATE 10/22/2015

Conditions of Approval (if any)

OCT 22 2015

Rock Queen Unit # 46
API: 30-005-00878
Chavez County, New Mexico
10/16/2015

Proposed P&A Procedure

1. MIRU. PU work string. ~~25sx5~~
2. RIH open ended and spot ~~100'~~ cement plug on top of CIBP at 2820'.
3. Circulate minimum 9.5 ppg P&A mud to surface.
4. TOOH. Perforate at 2335'.
5. RIH with PKR to 2200'. Pump into perf @ 2200' w/ minimum 40 sx cement. WOC, POOH w/packer, RIH w/ opened ended tubing and tag TOC at/above 2235'.
6. TOOH. Perforate at 1500'.
7. RIH with PKR to 1360'. Pump into perf @ 1500' w/ minimum 40 sx cement. WOC, POOH w/packer, RIH w/ opened ended tubing and tag TOC at/above 1400'.
8. TOOH Perforate at 255'.
9. Circulate cement from 255' to surface inside and out.
10. WOC, top off casing, remove WH, set P&A marker, clean and reclaim location.

John Saenz

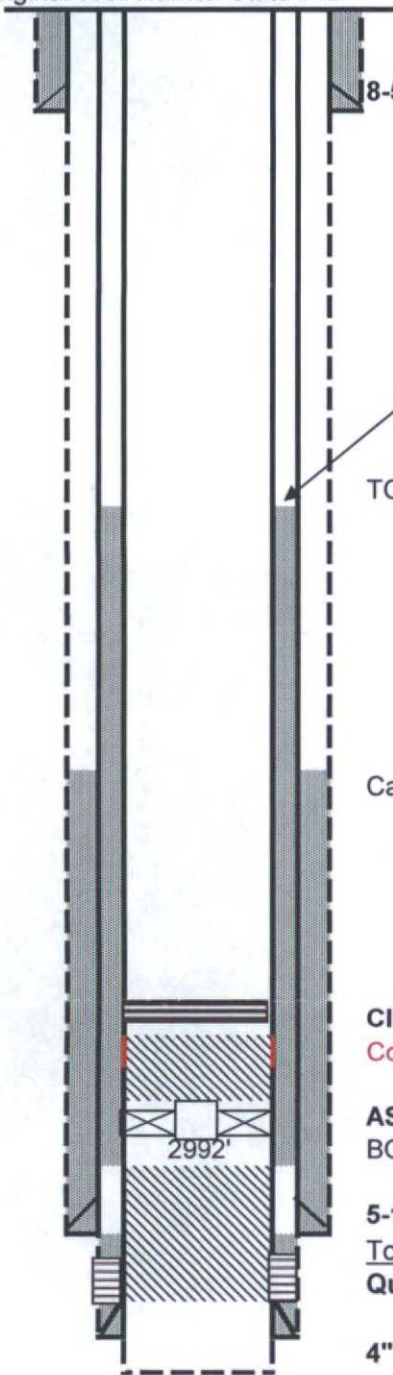
LEGACY RESERVES LP

FIELD: Caprock
LEASE/UNIT: Rock Queen
COUNTY: Chaves

DATE: 17-May-12
BY: MWM
WELL: 46
STATE: New Mexico

Location: 1980' FSL & 660' FWL, Sec 26L, T13S, R31ECM
SPUD: 4/55 COMP: 4/55
CURRENT STATUS: Active WAGIW
Original Well Name: State #12

KB = 4,413'
GL =
API = 30-005-00878



8-5/8" 24# @ 205' w/100 sx; calc'd TOC at surface

Pumped 26 sx thixotropic cement and 75 sx Class C cmt w/ additives down 4" x 5 1/2" casing annulus.

TOC @ 1370' in 4" liner (CBL, 1/08) Cmt bond from 1370' - 2860'

Calc'd primary TOC @ 2463' w/enlargment = 15%; yld = 1.26 ft3/sk

CIBP @ 2820'
Collapsed CSG @ 2885'

AS-1X at 2991' w/ 4' of 2-3/8", 4.7#, J-55, 8rd EUE IPC tbg and on off tool
BOC @ 2860' in 4"-by-5-1/2" (CBL, 1/08)

5-1/2", 14# @ 3022' w/125 sx

Top of Queen @ 3022':

Queen Open Hole: 3022-3035' (04-55)

3028' - 3041' (4 SPF) (01-08)

4" 9.5# J-55 liner from 3039' to surface w/30 sx--questionable if any
cement behind liner below 2860'.

Drilled out 19' to a PBDT of 3058'

PBDT - 3058'
TD - 3063'

LEGACY RESERVES LP

FIELD: Caprock
LEASE/UNIT: Rock Queen
COUNTY: Chaves

DATE: 17-May-12
BY: MWM
WELL: 46
STATE: New Mexico

Location: 1980' FSL & 660' FWL, Sec 26L, T13S, R31ECM

SPUD: 4/55 COMP: 4/55

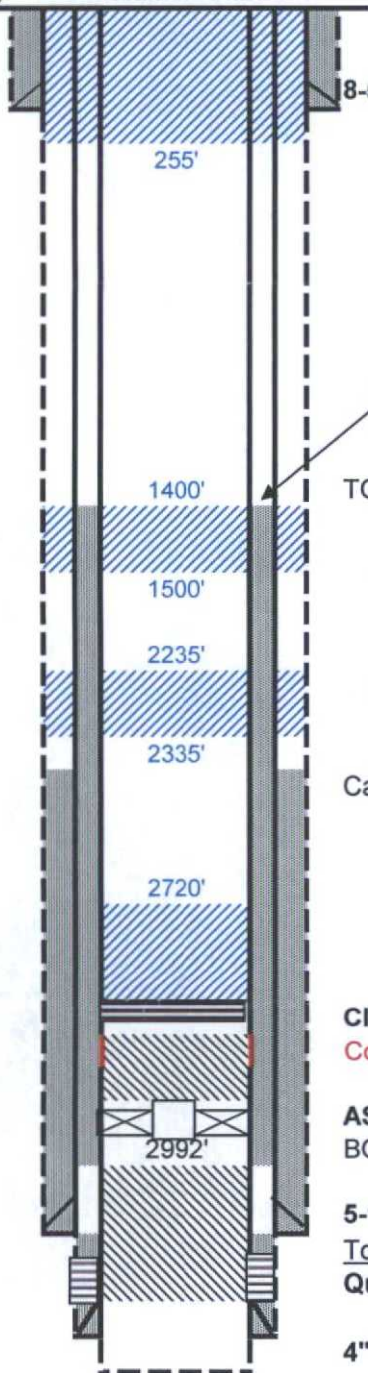
CURRENT STATUS: Active WAGIW

Original Well Name: State #12

KB = 4,413'

GL =

API = 30-005-00878



8-5/8" 24# @ 205' w/100 sx; calc'd TOC at surface

Pumped 26 sx thixotropic cement and 75 sx Class C cmt w/ additives down 4" x 5 1/2" casing annulus.

TOC @ 1370' in 4" liner (CBL, 1/08) Cmt bond from 1370' - 2860'

Top of Anhydrite @ 1450':

Top of Yates @ 2285':

Calc'd primary TOC @ 2463' w/enlargment = 15%; yld = 1.26 ft3/sk

CIBP @ 2820'

Collapsed CSG @ 2885'

AS-1X at 2991' w/ 4' of 2-3/8", 4.7#, J-55, 8rd EUE IPC tbg and on off tool
BOC @ 2860' in 4"-by-5-1/2" (CBL, 1/08)

5-1/2", 14# @ 3022' w/125 sx

Top of Queen @ 3022':

Queen Open Hole: 3022-3035' (04-55)

3028' - 3041' (4 SPF) (01-08)

4" 9.5# J-55 liner from 3039' to surface w/30 sx--questionable if any
cement behind liner below 2860'.

Drilled out 19' to a PBSD of 3058'

PBSD - 3058'
TD - 3063'