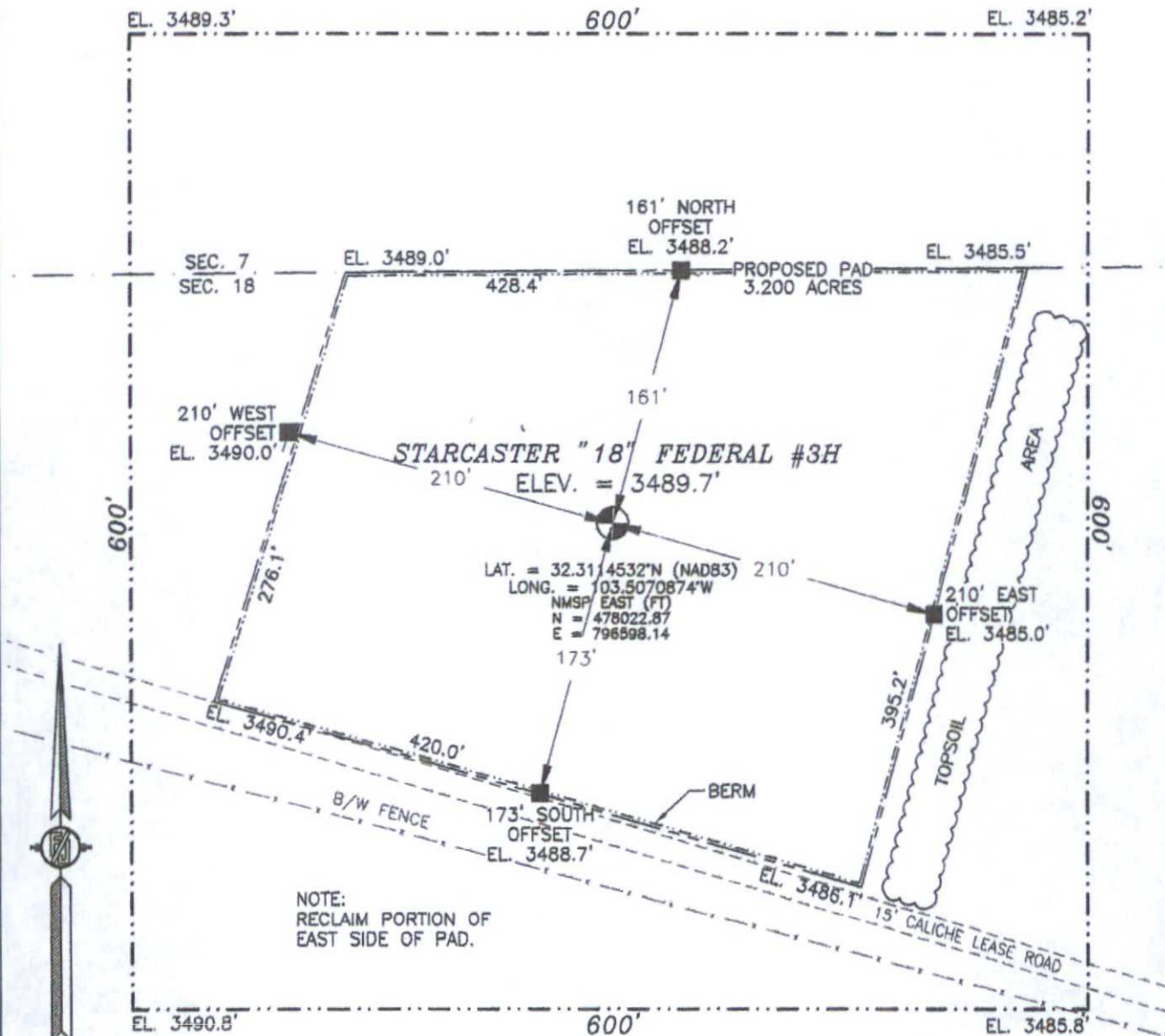


SURVEY NO. 2443

SECTION 18, TOWNSHIP 23 SOUTH, RANGE 34 EAST, N.M.P.M.
LEA COUNTY, STATE OF NEW MEXICO
SITE MAP

NOTE: LATITUDE AND LONGITUDE COORDINATES ARE SHOWN USING THE NORTH AMERICAN DATUM OF 1983 (NAD83). LISTED NEW MEXICO STATE PLANE EAST COORDINATES ARE GRID (NAD83). BASIS OF BEARING AND DISTANCES USED ARE NEW MEXICO STATE PLANE EAST COORDINATES MODIFIED TO THE SURFACE



0 10 50 100 200

SCALE 1" = 100'

DIRECTIONS TO LOCATION

FROM THE INTERSECTION OF CR 21 (DELAWARE BASIN) AND CR 21-B (SHELL) GO NORTH ON CR 21 FOR APPROX. 4.0 MILES. GO SOUTHEAST ON CALICHE LEASE ROAD (NORTH OF CATTLE GUARD) FOR APPROX. 0.23 OF A MILE. LOCATION IS APPROX. 175' NORTH.

ENDURANCE RESOURCES, LLC
STARCASTER "18" FEDERAL #3H
LOCATED 155 FT. FROM THE NORTH LINE
AND 1980 FT. FROM THE EAST LINE OF
SECTION 18, TOWNSHIP 23 SOUTH,
RANGE 34 EAST, N.M.P.M.
LEA COUNTY, STATE OF NEW MEXICO

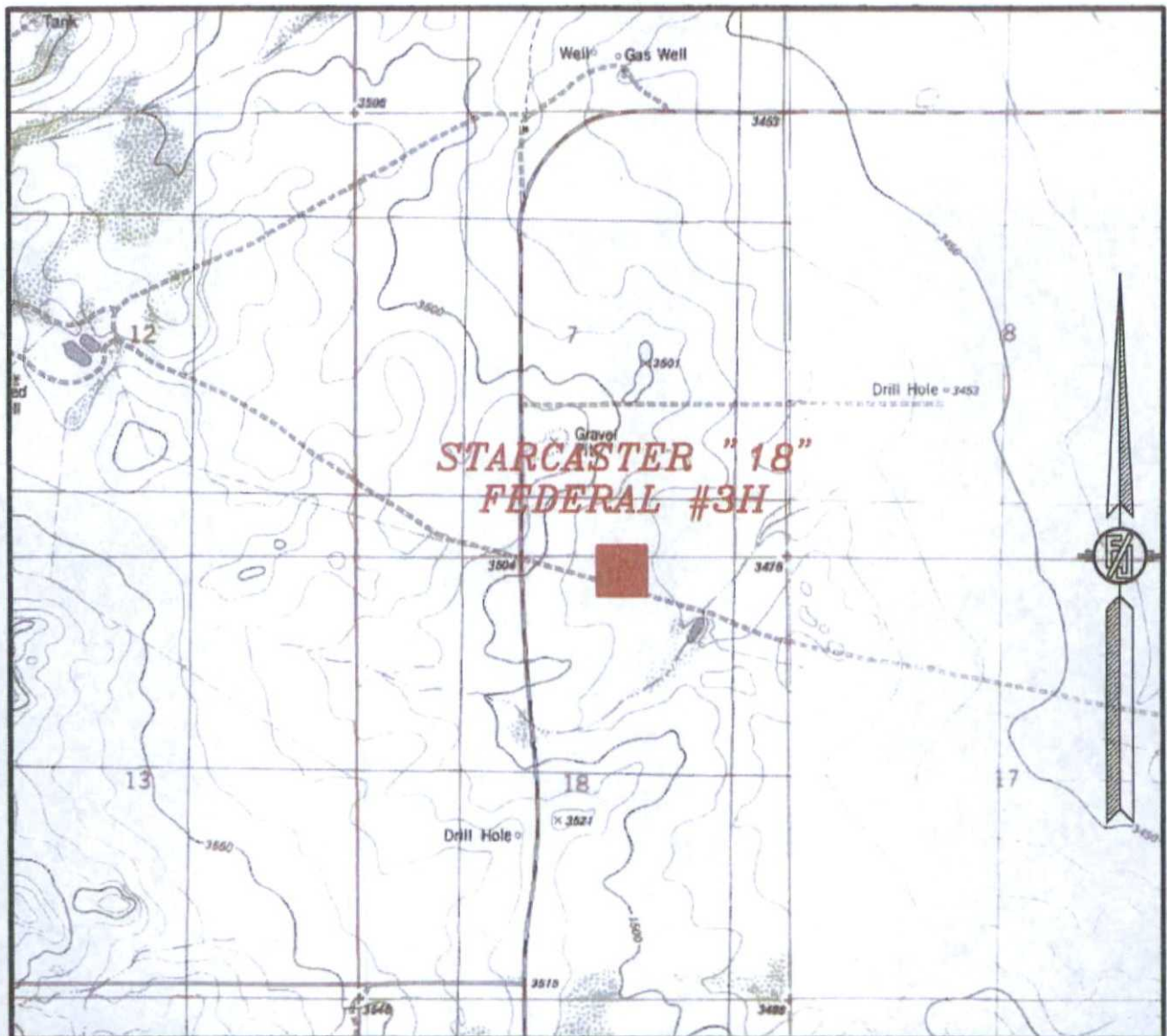
NOVEMBER 19, 2013

SURVEY NO. 2443

MADRON SURVEYING, INC. 301 SOUTH CANAL (575) 234-3341

CARLSBAD, NEW MEXICO

SECTION 18, TOWNSHIP 23 SOUTH, RANGE 34 EAST, N.M.P.M.
LEA COUNTY, STATE OF NEW MEXICO
LOCATION VERIFICATION MAP



USGS QUAD MAP:
TIP TOP WELLS

NOT TO SCALE

ENDURANCE RESOURCES, LLC
STARCASTER "18" FEDERAL #3H
LOCATED 155 FT. FROM THE NORTH LINE
AND 1980 FT. FROM THE EAST LINE OF
SECTION 18, TOWNSHIP 23 SOUTH,
RANGE 34 EAST, N.M.P.M.
LEA COUNTY, STATE OF NEW MEXICO

NOVEMBER 19, 2013

SURVEY NO. 2443

MADRON SURVEYING, INC. 301 SOUTH CANAL CARLSBAD, NEW MEXICO
(575) 234-3341

SECTION 18, TOWNSHIP 23 SOUTH, RANGE 34 EAST, N.M.P.M.
LEA COUNTY, STATE OF NEW MEXICO
VICINITY MAP



NOT TO SCALE

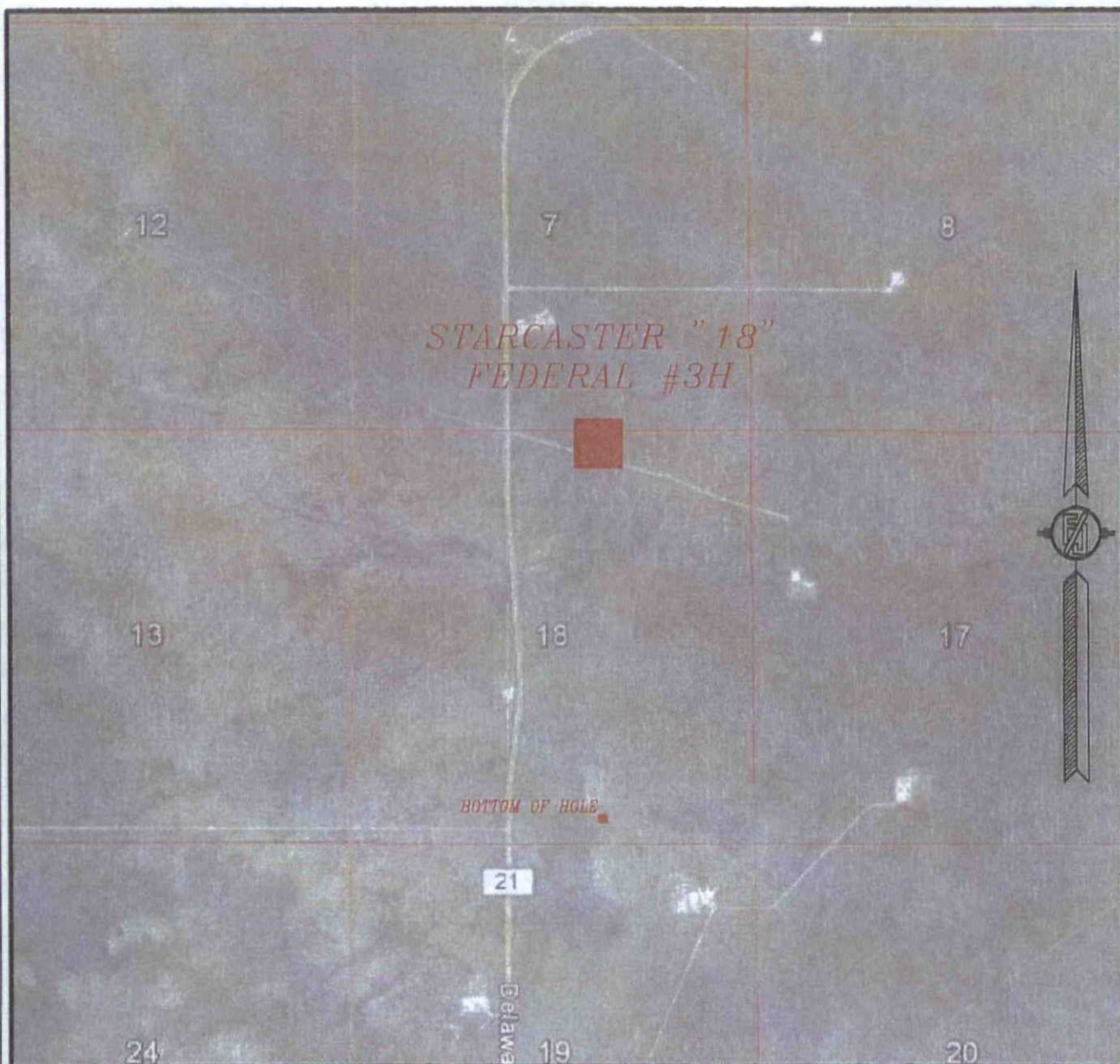
ENDURANCE RESOURCES, LLC
STARCASTER "18" FEDERAL #3H
LOCATED 155 FT. FROM THE NORTH LINE
AND 1980 FT. FROM THE EAST LINE OF
SECTION 18, TOWNSHIP 23 SOUTH,
RANGE 34 EAST, N.M.P.M.
LEA COUNTY, STATE OF NEW MEXICO

DIRECTIONS TO LOCATION
FROM THE INTERSECTION OF CR 21 (DELAWARE BASIN) AND CR
21-B (SHELL) GO NORTH ON CR 21 FOR APPROX. 4.0 MILES. GO
SOUTHEAST ON CALICHE LEASE ROAD (NORTH OF CATTLE GUARD)
FOR APPROX. 0.23 OF A MILE. LOCATION IS APPROX. 175' NORTH.

NOVEMBER 19, 2013

MADRON SURVEYING, INC. 301 SOUTH CANAL (575) 234-3341 SURVEY NO. 2443 CARLSBAD, NEW MEXICO

SECTION 18, TOWNSHIP 23 SOUTH, RANGE 34 EAST, N.M.P.M.
LEA COUNTY, STATE OF NEW MEXICO
AERIAL PHOTO



NOT TO SCALE
AERIAL PHOTO:
GOOGLE EARTH
MARCH 2012

ENDURANCE RESOURCES, LLC
STARCASTER "18" FEDERAL #3H
LOCATED 155 FT. FROM THE NORTH LINE
AND 1980 FT. FROM THE EAST LINE OF
SECTION 18, TOWNSHIP 23 SOUTH,
RANGE 34 EAST, N.M.P.M.
LEA COUNTY, STATE OF NEW MEXICO

NOVEMBER 19, 2013

SURVEY NO. 2443

MADRON SURVEYING, INC. 301 SOUTH CANAL (575) 234-3341 CARLSBAD, NEW MEXICO

Starcaster 18 Federal-3H

