

District I
1625 N. French Dr., Hobbs, NM 88240
Phone: (575) 393-6161 Fax: (575) 393-0720
District II
811 S. First St., Artesia, NM 88210
Phone: (575) 748-1283 Fax: (575) 748-9720
District III
1000 Rio Brazos Road, Aztec, NM 87410
Phone: (505) 334-6178 Fax: (505) 334-6170
District IV
1220 S. St. Francis Dr., Santa Fe, NM 87505
Phone: (505) 476-3460 Fax: (505) 476-3462

State of New Mexico
Energy, Minerals & Natural Resources Department
OIL CONSERVATION DIVISION
1220 South St. Francis Dr.
Santa Fe, NM 87505

HOBBS OGD
OCT 30 2015
RECEIVED

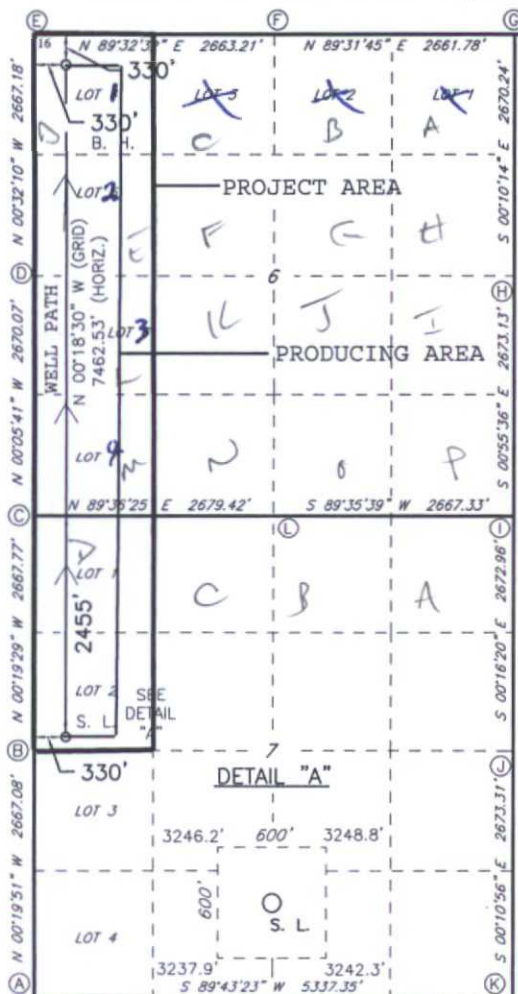
Form C-102
Revised August 1, 2011
Submit one copy to appropriate
District Office

☐ AMENDED REPORT

WELL LOCATION AND ACREAGE DEDICATION PLAT

¹ API Number 30-025-42910		² Pool Code 97838		³ Pool Name JENNINGS UPPER BONE SPRING					
⁴ Property Code 315632		⁵ Property Name PADUCA 7/6 A3ED FED COM						⁶ Well Number 2H	
⁷ GRID NO. 14744		⁸ Operator Name MEWBOURNE OIL COMPANY						⁹ Elevation 3243'	
¹⁰ Surface Location									
UL or lot no. 2E	Section 7	Township 26S	Range 32E	Lot Idn 2	Feet from the 2455	North/South line NORTH	Feet From the 330	East/West line WEST	County LEA
¹¹ Bottom Hole Location If Different From Surface									
UL or lot no. 1D	Section 6	Township 26S	Range 32E	Lot Idn 4	Feet from the 330	North/South line NORTH	Feet from the 330	East/West line WEST	County LEA
¹² Dedicated Acres 240		¹³ Joint or Infill		¹⁴ Consolidation Code		¹⁵ Order No.			

No allowable will be assigned to this completion until all interest have been consolidated or a non-standard unit has been approved by the division.



GEODETTIC DATA
NAD 27 GRID - NM EAST
SURFACE LOCATION
N: 385363.5 - E: 689537.7
LAT: 32.05800276° N
LONG: 103.72153066° W

BOTTOM HOLE
N: 392824.4 - E: 689497.5

CORNER DATA
NAD 27 GRID - NM EAST

A: FOUND BRASS CAP "1939"
N: 382481.9 - E: 689224.4

B: FOUND BRASS CAP "1939"
N: 385148.4 - E: 689209.0

C: FOUND BRASS CAP "1939"
N: 387815.6 - E: 689193.8

D: FOUND BRASS CAP "1939"
N: 390485.2 - E: 689189.4

E: FOUND BRASS CAP "1939"
N: 393151.7 - E: 689164.5

F: FOUND BRASS CAP "1939"
N: 393173.0 - E: 691827.1

G: FOUND BRASS CAP "1939"
N: 393194.9 - E: 694488.3

H: FOUND BRASS CAP "1939"
N: 390525.1 - E: 694496.2

I: FOUND BRASS CAP "1939"
N: 387852.9 E: 694539.4

J: FOUND BRASS CAP "1939"
N: 385180.5 E: 694552.1

K: FOUND BRASS CAP "1939"
N: 382507.7 E: 694560.6

L: FOUND BRASS CAP "1939"
N: 387834.0 E: 691872.7

17 OPERATOR CERTIFICATION

I hereby certify that the information contained herein is true and complete to the best of my knowledge and belief, and that this organization either owns a working interest or unleased mineral interest in the land including the proposed bottom hole location or has a right to drill this well at this location pursuant to a contract with an owner of such a mineral or working interest, or to a voluntary pooling agreement or a compulsory pooling order heretofore entered by the division.

Signature **BRADLEY BISHOP** Date **3-3-15**
Printed Name

E-mail Address

18 SURVEYOR CERTIFICATION

I hereby certify that the well location shown on this plat was plotted from field notes of actual surveys made by me or under my supervision, and that the same is true and correct to the best of my belief.

1-19-2015

Date of Survey

Signature and Seal of Professional Surveyor

19680

Certificate Number

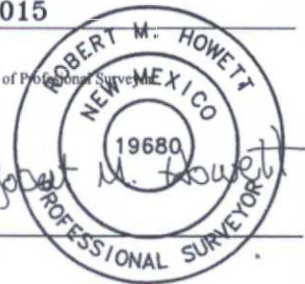
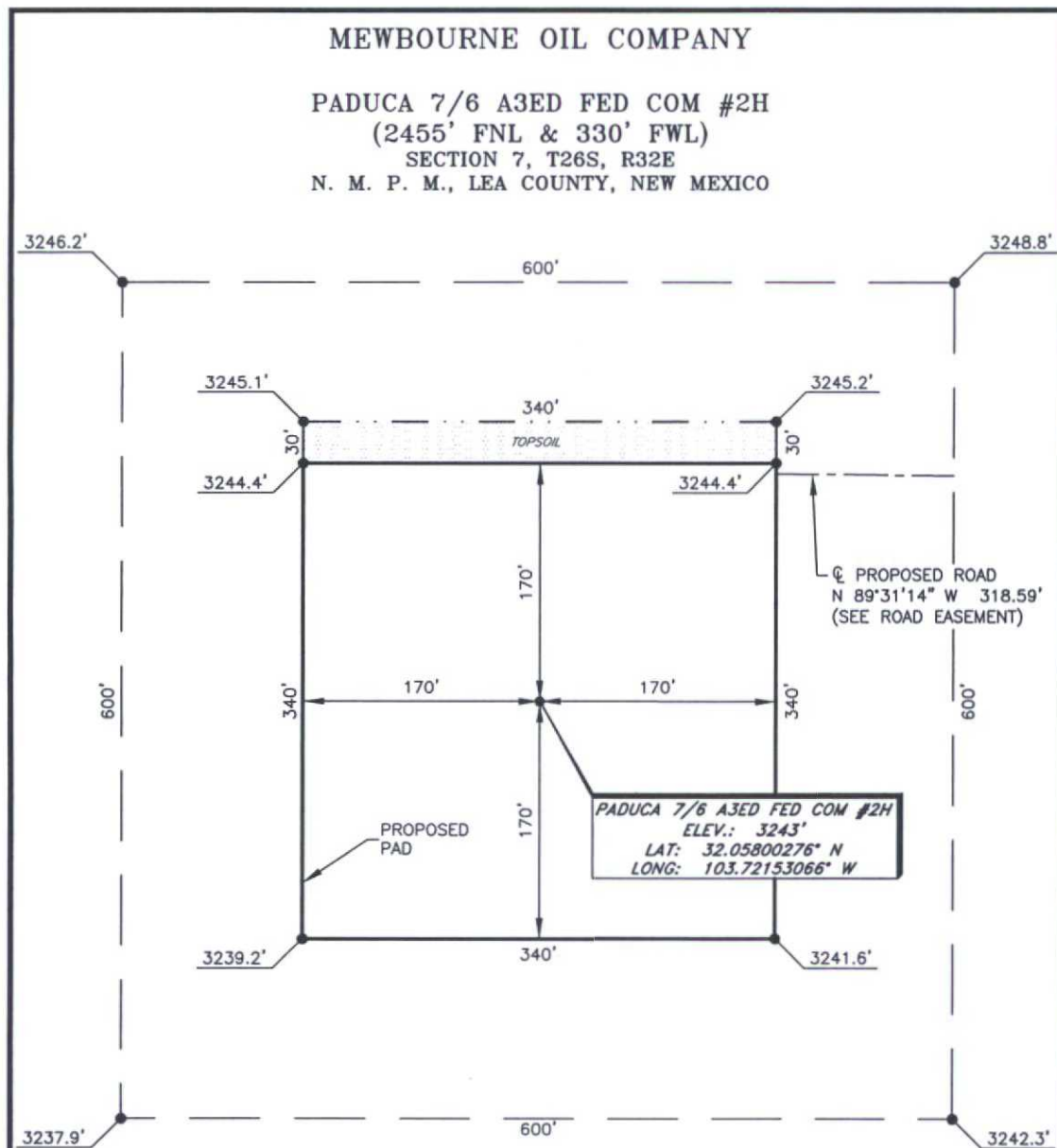


EXHIBIT "3"



DIRECTIONS TO LOCATION

From the intersection of CR-J1 (Orla Hwy.) and CR-J2 (Battle Axe Rd.)
Go Northeast on CR-J1 approx. 3.1 miles to a lease road on the left;

Turn left and go West approx. 2.5 miles on lease road to lease road on left;

Turn left and go South turning West approx. 0.4 miles to the Paduca 7/6 A2ED
Fed Com #1H;

Turn right and go West to Northwest corner of Pad;

Go West approx. 320 feet to proposed well on left.

SCALE: 1" = 100'
0 50 100
BEARINGS ARE
NAD 27 GRID - NM EAST
DISTANCES ARE GROUND

Firm No.: TX 10193838 NM 4655451

Copyright 2014 - All Rights Reserved

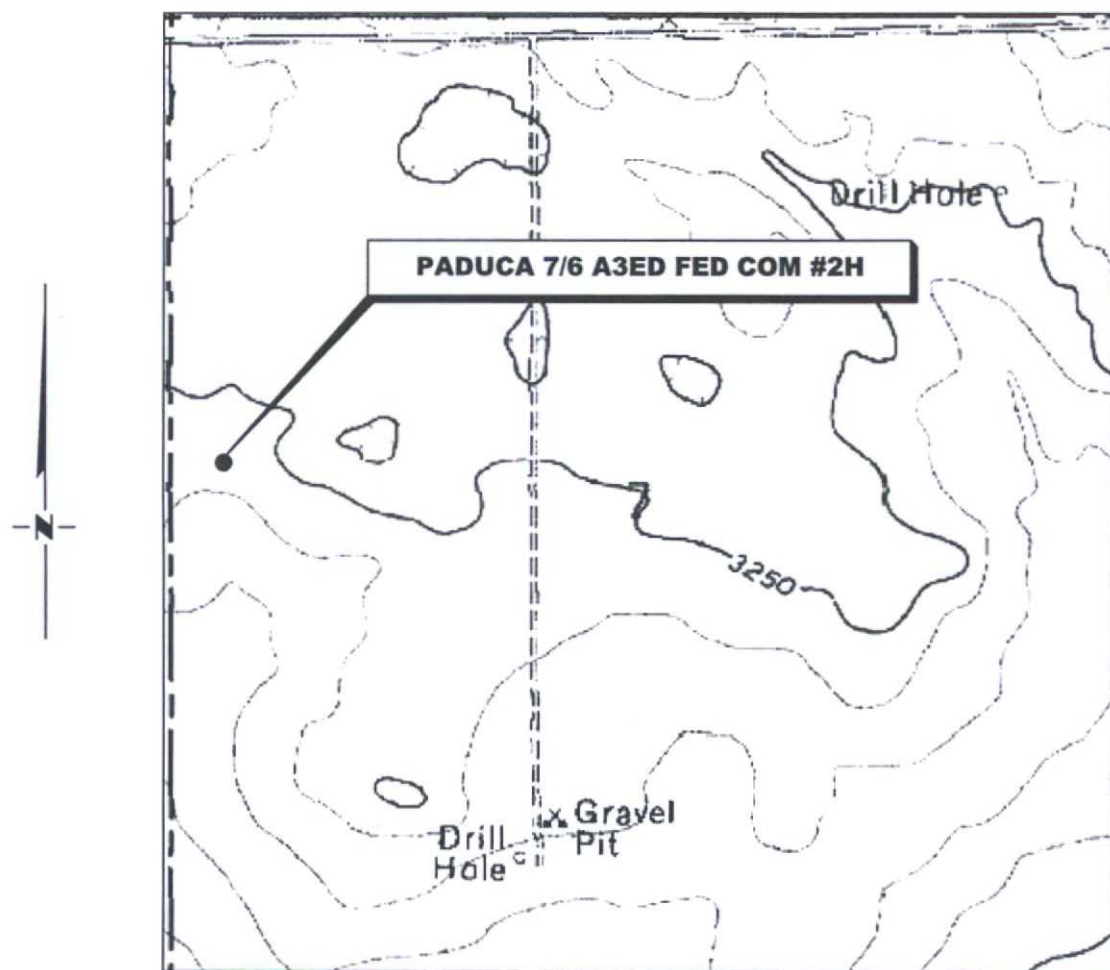
NO.	REVISION	DATE
JOB NO.:	LS140581	
DWG. NO.:	140581PAD	

RRC

308 W. BROADWAY ST., HOBBS, NM 88240 (575) 964-8200

SCALE: 1" = 100'
DATE: 1-19-2015
SURVEYED BY: BK/AA
DRAWN BY: CMJ
APPROVED BY: RMH
SHEET : 1 OF 1

LOCATION VERIFICATION MAP



*SECTION 7, TWP. 26 SOUTH, RGE. 32 EAST,
N. M. P. M., LEA CO., NEW MEXICO*

OPERATOR: Mewbourne Oil Company
 LEASE: Paduca 7/6 A3ED Fed Com
 WELL NO.: 2H
 ELEVATION: 3243'

LOCATION: 2455' FNL & 330' FWL
 CONTOUR INTERVAL:
 USGS TOPO. SOURCE MAP:
Paduca Breaks West, NM (1973)

Firm No.: TX 10193838 NM 4655451

Copyright 2014 - All Rights Reserved

NO.	REVISION	DATE
JOB NO.: LS140581		
DWG. NO.: 140581VM		

RRC

308 W. BROADWAY ST., HOBBS, NM 88240 (575) 964-8200

SCALE: 1"=1000'
 DATE: 1-19-2015
 SURVEYED BY: BK/AA
 DRAWN BY: CMJ
 APPROVED BY: RMH
 SHEET : 1 OF 1

EXHIBIT "3B"

VICINITY MAP

NOT TO SCALE



*SECTION 7, TWP. 26 SOUTH, RGE. 32 EAST,
N. M. P. M., LEA CO., NEW MEXICO*

OPERATOR: Mewbourne Oil Company
LEASE: Paduca 7/6 A3ED Fed Com
WELL NO.: 2H

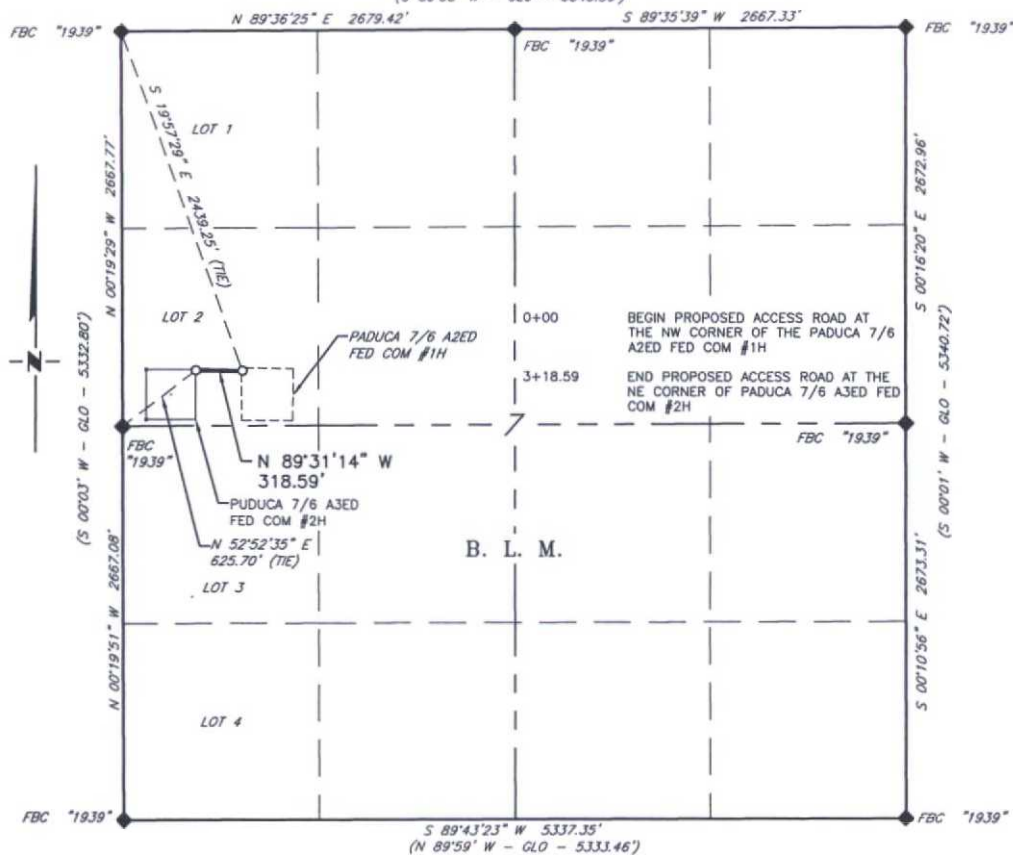
LOCATION: 2455' FNL & 330' FWL
ELEVATION: 3243'

Firm No.: TX 10193838 NM 4655451

Copyright 2014 - All Rights Reserved

			<div>RRC</div>	SCALE: NTS
				DATE: 1-19-2015
				SURVEYED BY: BK/AA
				DRAWN BY: CMJ
NO.	REVISION	DATE	<div></div>	APPROVED BY: RMH
JOB NO.: LS140581				SHEET : 1 OF 1
DWG. NO.: 140581VM				
			308 W. BROADWAY ST., HOBBS, NM 88240 (575) 964-8200	

MEWBOURNE OIL COMPANY
PROPOSED ACCESS ROAD FOR THE PADUCA 7/6 A3ED FED COM #2H
WELL LOCATION
SECTION 7, T26S, R32E,
N. M. P. M., LEA CO., NEW MEXICO
(S 89°58' W - GLO - 5343.36')



DESCRIPTION

A strip of land 30 feet wide, being 318.59 feet or 19.308 rods in length lying in Section 7, Township 26 South, Range 32 East, N. M. P. M., Lea County, New Mexico, being 15 feet left and 15 feet right of the following described survey of a centerline across B. L. M. land;

BEGINNING at Engr. Sta. 0+00, a point in the Northwest quarter of Section 7, which bears S 19°57'29" E, 2,439.25 feet from a brass cap, stamped "1939", found for the Northwest corner of Section 7;

Thence N 89°31'14" W, 318.59 feet to Engr. Sta. 3+18.59, the End of Survey, a point which bears N 52°52'35" E, 625.70 feet from a brass cap, stamped "1939", found for the West quarter corner of Section 7.

Said strip of land contains 0.219 acres, more or less, and is allocated by forties as follows:

LOT 2 19.308 Rods 0.219 Acres

SCALE: 1" = 1000'
 0 500' 1000'

BEARINGS ARE GRID NAD 27
 NM EAST
 DISTANCES ARE HORIZ. GROUND.

LEGEND

- () RECORD DATA - GLO
 ♦ FOUND MONUMENT AS NOTED
 ■ FOUND MON. AS NOTED
 — PROPOSED ACCESS ROAD

I, R. M. Howett, a N. M. Professional Surveyor, hereby certify that I prepared this plot from an actual survey made on the ground under my direct supervision, said survey and plot meet the Min. Stds. for Land Surveying in the State of N. M. and are true and correct to the best of my knowledge and belief.

Robert M. Howett
 Robert M. Howett

Firm No.: TX 10193838 NM 4655451

Robert M. Howett NM PS 19680

Copyright 2014 - All Rights Reserved



NO.	REVISION	DATE
JOB NO.:	LS140581	
DWG. NO.:	140581RD	

RRC

308 W. BROADWAY ST., HOBBS, NM 88240 (575) 964-8200

SCALE: 1" = 1000'
DATE: 1-19-2015
SURVEYED BY: BK/AA
DRAWN BY: RMH
APPROVED BY: RMH
SHEET : 1 OF 1

Exhibit "3D": Flow Line

1996

© 2015 Google

Imagery Date: 4/7/2013 32°03'31.29" N 103°43'15.22" W elev 3255 ft eye alt 7703 ft

Google earth
Earth point

NWSE

SWNE

NWNE

NENE

SENE

NESE

Paduca 7/6 A3ED Fed Com #2H

Paduca 7/6 A3ED Fed Com #2H

L 2

L 1

L 3

SENW

NENW

NESW

NWNE

SWNE

Exhibit "3E": Road Access



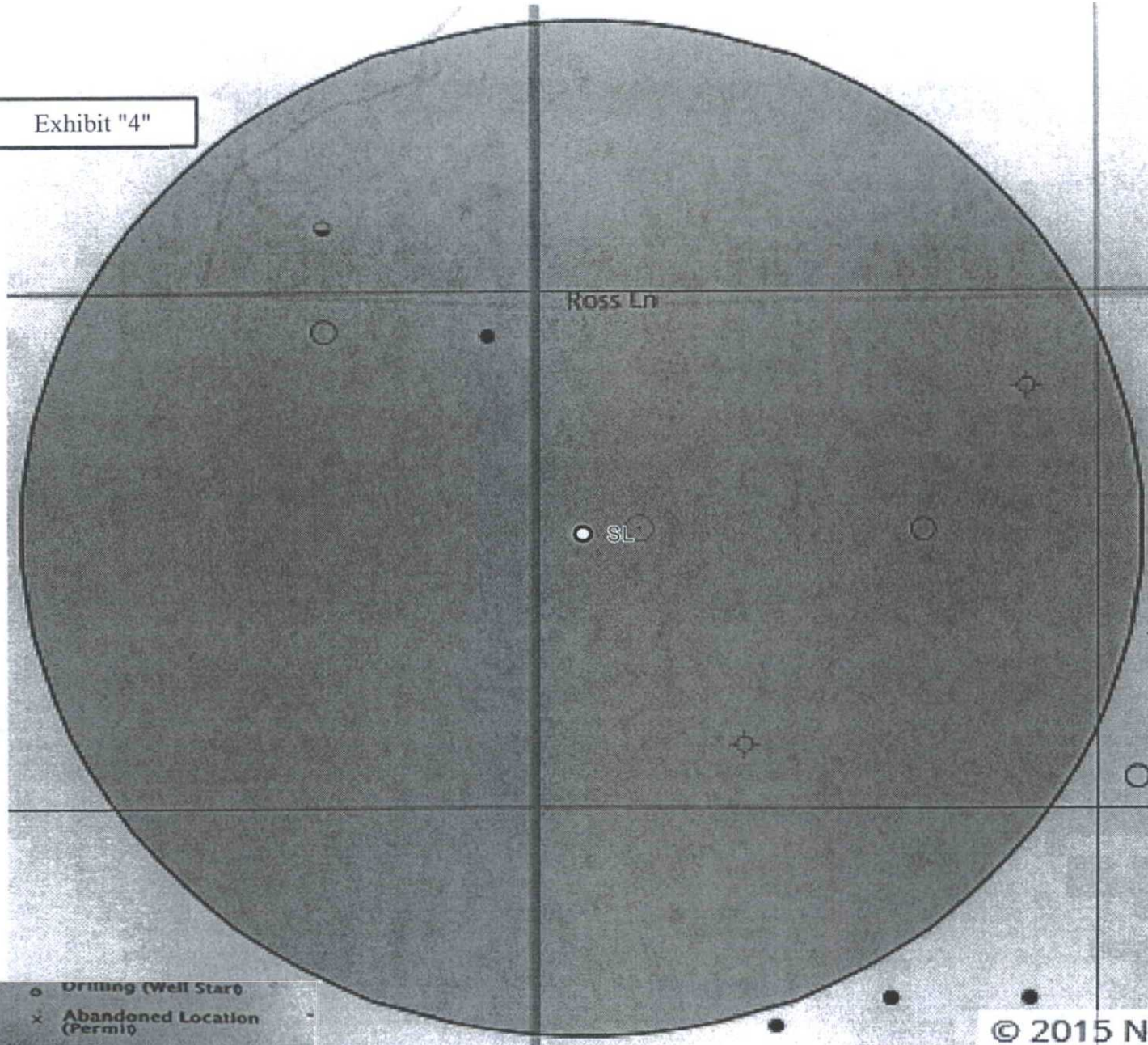
1996

Imagery Date: 4/7/2013

32°03'37.99" N 103°41'37.63" W elev 3229 ft eye alt 21745 ft

Google earth
Earth Point

Exhibit "4"

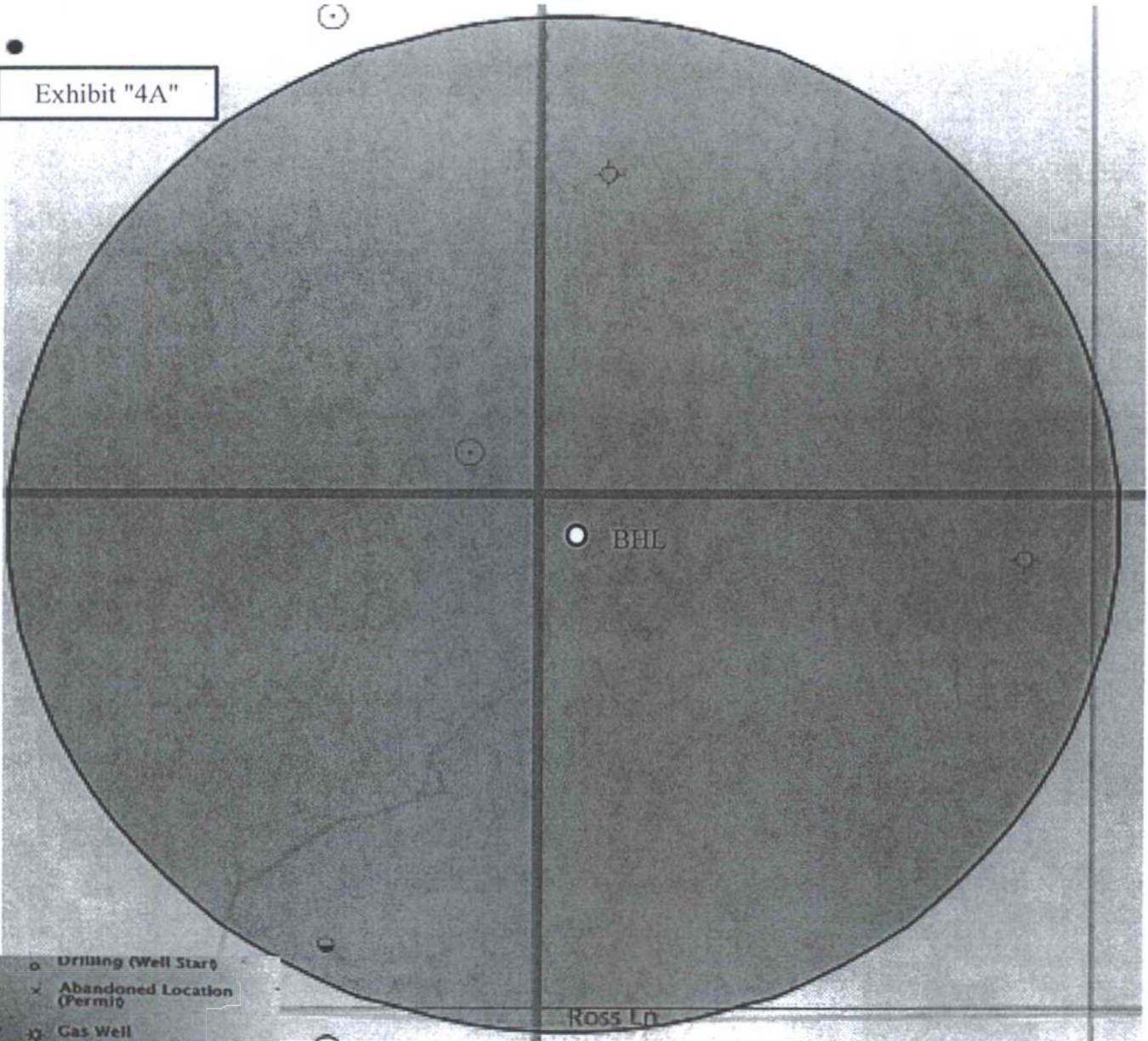


- Drilling (Well Start)
- × Abandoned Location (Permit)
- ☆ Gas Well
- Oil Well
- ✱ Oil and Gas Well
- Other (Observation, etc)
- ◇ Injection Well
- ◇ Suspended
- ✱ Plugged Gas Well
- ✱ Plugged Oil Well
- ✱ Plugged Oil and Gas
- ◇ Dry Hole (No Shows)
- ☆ Dry Hole w/Gas Show
- ◇ Dry Hole w/Oil Show
- ☆ Dry Hole w/Oil and Gas Show

Surface Location
Paduca 7/6 A3ED Fed Com #2H
Sec 7 T26S R32E

Exhibit "4A"

- Drilling (Well Start)
- × Abandoned Location (Perm)
- ✱ Gas Well
- Oil Well
- ✱ Oil and Gas Well
- Other (Observation, etc)
- ✱ Injection Well
- Suspended
- ✱ Plugged Gas Well
- ✱ Plugged Oil Well
- ✱ Plugged Oil and Gas
- ◇ Dry Hole (No Shows)
- ✱ Dry Hole w/Gas Show
- ◇ Dry Hole w/Oil Show
- ✱ Dry Hole w/Oil and Gas Show



Bottom Hole Location
Paduca 7/6 A3ED Fed Com #2H
Sec 6 T26S R32E