

WELL LOCATION AND ACREAGE DEDICATION PLAT

¹ API Number 30-025-42920	² Pool Code 96434	³ Pool Name RED HILLS; BONE SPRING, NORTH
⁴ Property Code 315634	⁵ Property Name BOOMSLANG 14 FED	⁶ Well Number 1H
⁷ OGRID No. 6137	⁸ Operator Name DEVON ENERGY PRODUCTION COMPANY, L.P.	⁹ Elevation 3601.6

¹⁰ Surface Location

U/L or lot no.	Section	Township	Range	Lot Idn	Feet from the	North/South line	Feet from the	East/West line	County
B	14	24 S	33 E		200	NORTH	1980	EAST	LEA

¹¹ Bottom Hole Location If Different From Surface

U/L or lot no.	Section	Township	Range	Lot Idn	Feet from the	North/South line	Feet from the	East/West line	County
O	14	24 S	33 E		330	SOUTH	1980	EAST	LEA

¹² Dedicated Acres 160	¹³ Joint or Infill	¹⁴ Consolidation Code	¹⁵ Order No.
--------------------------------------	-------------------------------	----------------------------------	-------------------------

No allowable will be assigned to this completion until all interests have been consolidated or a non-standard unit has been approved by the division.

PP: 800 FNL & 1980 FEL

Hand-drawn map showing a rectangular area with various corner points and a central feature labeled "BOTTOM OF HOLE". The map includes latitude and longitude coordinates for several points, as well as northings and eastings. A note explains that the coordinates are based on the North American Datum of 1983 (NAD83) and are modified to the surface. The map is divided into sections by dashed lines, and there are handwritten letters "B", "G", and "D" in different areas. A scale bar at the bottom indicates 1 inch equals 330 feet.

Top Left Corner:
NW CORNER SEC. 14
LAT. = 32.2248615°N
LONG. = 103.5516579°W
NMSP EAST (FT)
N = 446417.68
E = 783057.59

Top Right Corner:
N/4 CORNER SEC. 14
LAT. = 32.2248687°N
LONG. = 103.5431322°W
NMSP EAST (FT)
N = 446439.59
E = 785694.08

Bottom Left Corner:
SW CORNER SEC. 14
LAT. = 32.2103545°N
LONG. = 103.5516507°W
NMSP EAST (FT)
N = 441140.13
E = 783098.19

Bottom Right Corner:
S/4 CORNER SEC. 14
LAT. = 32.2103608°N
LONG. = 103.5345930°W
NMSP EAST (FT)
N = 441181.22
E = 788373.97

Central Feature:
"BOTTOM OF HOLE"
LAT. = 32.2112656°N
LONG. = 103.5409943°W
NMSP EAST (FT)
N = 441495.72
E = 786391.69

Other Points:
W/4 CORNER SEC. 14
LAT. = 32.2178077°N
LONG. = 103.5516536°W
NMSP EAST (FT)
N = 443778.80
E = 783078.11
E/4 CORNER SEC. 14
LAT. = 32.2176222°N
LONG. = 103.5346000°W
NMSP EAST (FT)
N = 443822.86
E = 788352.19

Notes:
NOTE: LATITUDE AND LONGITUDE COORDINATES ARE SHOWN USING THE NORTH AMERICAN DATUM OF 1983 (NAD83). LISTED NEW MEXICO STATE PLANE EAST COORDINATES ARE GRID (NAD83). BASIS OF BEARING AND DISTANCES USED ARE NEW MEXICO STATE PLANE EAST COORDINATES MODIFIED TO THE SURFACE.

Scale:
1" = 330'

17 OPERATOR CERTIFICATION

I hereby certify that the information contained herein is true and complete to the best of my knowledge and belief, and that this organization either owns a working interest or unleased mineral interest in the land including the proposed bottom hole location or has a right to drill this well at this location pursuant to a contract with an owner of such a mineral or working interest, or to a voluntary pooling agreement or a compulsory pooling order heretofore entered by the Division.

Signature _____ Date 12/09/2014

David H. Cook
Printed Name

david.cook@dvn.com
E-mail Address

¹⁸SURVEYOR CERTIFICATION

I hereby certify that the well location shown on this plat was plotted from field notes of actual surveys made by me or under my supervision, and that the same is true and correct to the best of my belief.

NOVEMBER 17, 2014

Date of Survey _____

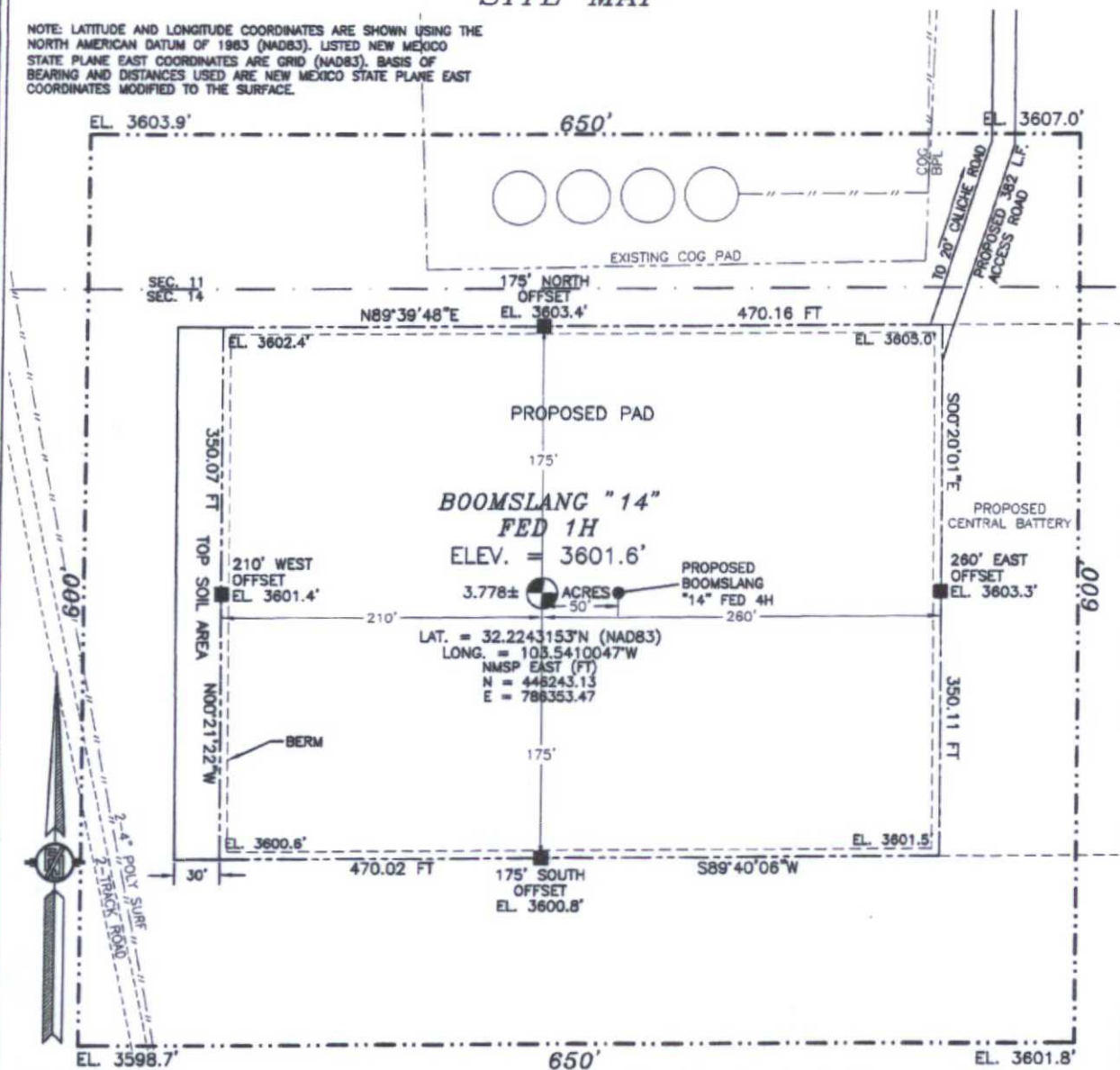
Signature and Seal of Professional Surveyor:

Certificate Number: FILIPON F. JARAMILLO, PLS 12797
SURVEY NO. 3460

NOV 05 2015

SECTION 14, TOWNSHIP 24 SOUTH, RANGE 33 EAST, N.M.P.M.
LEA COUNTY, STATE OF NEW MEXICO
SITE MAP

NOTE: LATITUDE AND LONGITUDE COORDINATES ARE SHOWN USING THE NORTH AMERICAN DATUM OF 1983 (NAD83). LISTED NEW MEXICO STATE PLANE EAST COORDINATES ARE GRID (NAD83). BASIS OF BEARING AND DISTANCES USED ARE NEW MEXICO STATE PLANE EAST COORDINATES MODIFIED TO THE SURFACE.



010 50 100 200

SCALE 1" = 100'

DIRECTIONS TO LOCATION

FROM STATE HWY. 128 AND CR. J2 (BRINSTOOL) GO NORTH ON J2 0.85 MILES, TURN RIGHT AND GO EAST 0.5 MILES, BEND LEFT AND GO NORTH 0.25 MILES, TURN RIGHT AND GO EAST 1.15 MILES TO A PROPOSED ROAD SURVEY AND FOLLOW FLAGS SOUTH 256' THEN SOUTH-SOUTHWEST 126' TO THE PROPOSED NORTHEAST PAD CORNER FOR THIS LOCATION

DEVON ENERGY PRODUCTION COMPANY, L.P.

BOOMSLANG "14" FED 1H

LOCATED 200 FT. FROM THE NORTH LINE
AND 1980 FT. FROM THE EAST LINE OF

SECTION 14, TOWNSHIP 24 SOUTH,
RANGE 33 EAST, N.M.P.M.

LEA COUNTY, STATE OF NEW MEXICO

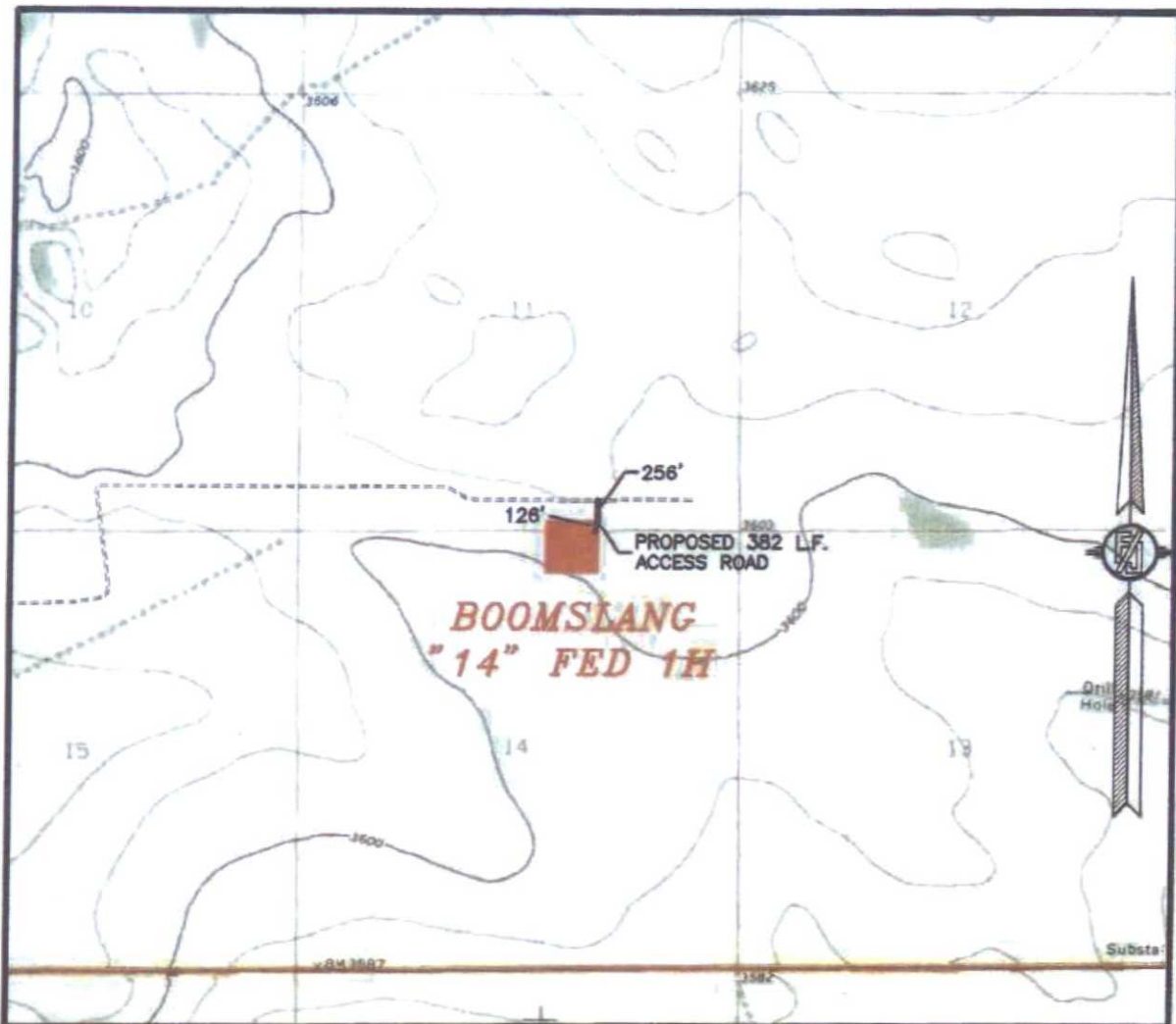
NOVEMBER 17, 2014

SURVEY NO. 3460

MADRON SURVEYING, INC. 301 SOUTH CANAL (575) 234-3341

CARLSBAD, NEW MEXICO

SECTION 14, TOWNSHIP 24 SOUTH, RANGE 33 EAST, N.M.P.M.
LEA COUNTY, STATE OF NEW MEXICO
LOCATION VERIFICATION MAP



USGS QUAD MAP:
BELL LAKE

NOT TO SCALE

DEVON ENERGY PRODUCTION COMPANY, L.P.

BOOMSLANG "14" FED 1H

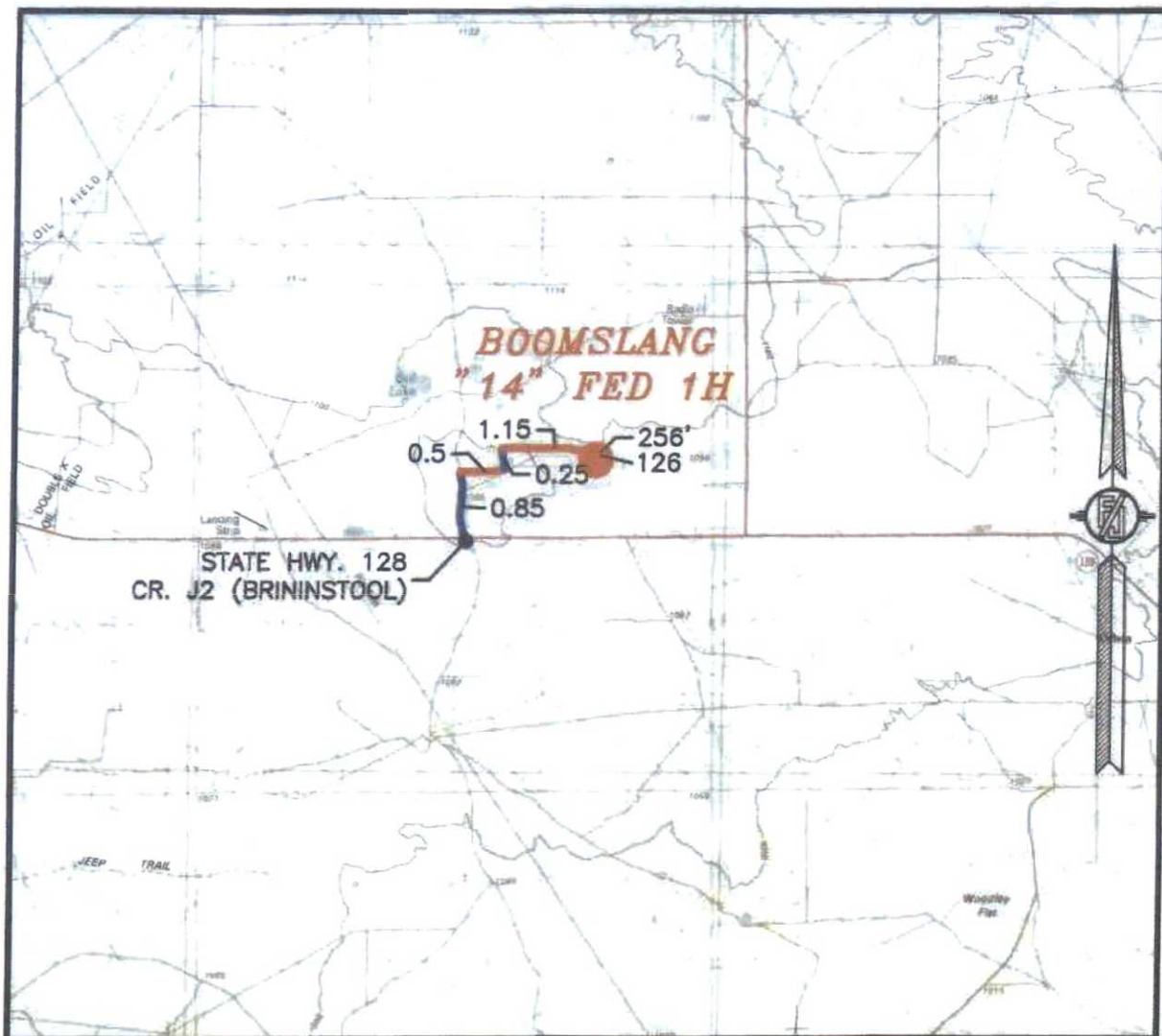
LOCATED 200 FT. FROM THE NORTH LINE
AND 1980 FT. FROM THE EAST LINE OF
SECTION 14, TOWNSHIP 24 SOUTH,
RANGE 33 EAST, N.M.P.M.
LEA COUNTY, STATE OF NEW MEXICO

NOVEMBER 17, 2014

SURVEY NO. 3460

MADRON SURVEYING, INC. 301 SOUTH CANAL CARLSBAD, NEW MEXICO
(575) 234-3341

SECTION 14, TOWNSHIP 24 SOUTH, RANGE 33 EAST, N.M.P.M.
LEA COUNTY, STATE OF NEW MEXICO
VICINITY MAP



DISTANCES IN MILES

NOT TO SCALE

DIRECTIONS TO LOCATION

FROM STATE HWY. 128 AND CR. J2 (BRINSTOOL) GO NORTH ON J2 0.85 MILES, TURN RIGHT AND GO EAST 0.5 MILES, BEND LEFT AND GO NORTH 0.25 MILES, TURN RIGHT AND GO EAST 1.15 MILES TO A PROPOSED ROAD SURVEY AND FOLLOW FLAGS SOUTH 256' THEN SOUTH-SOUTHWEST 126' TO THE PROPOSED NORTHEAST PAD CORNER FOR THIS LOCATION

DEVON ENERGY PRODUCTION COMPANY, L.P.

BOOMSLANG "14" FED 1H

LOCATED 200 FT. FROM THE NORTH LINE

AND 1980 FT. FROM THE EAST LINE OF

SECTION 14, TOWNSHIP 24 SOUTH,

RANGE 33 EAST, N.M.P.M.

LEA COUNTY, STATE OF NEW MEXICO

NOVEMBER 17, 2014

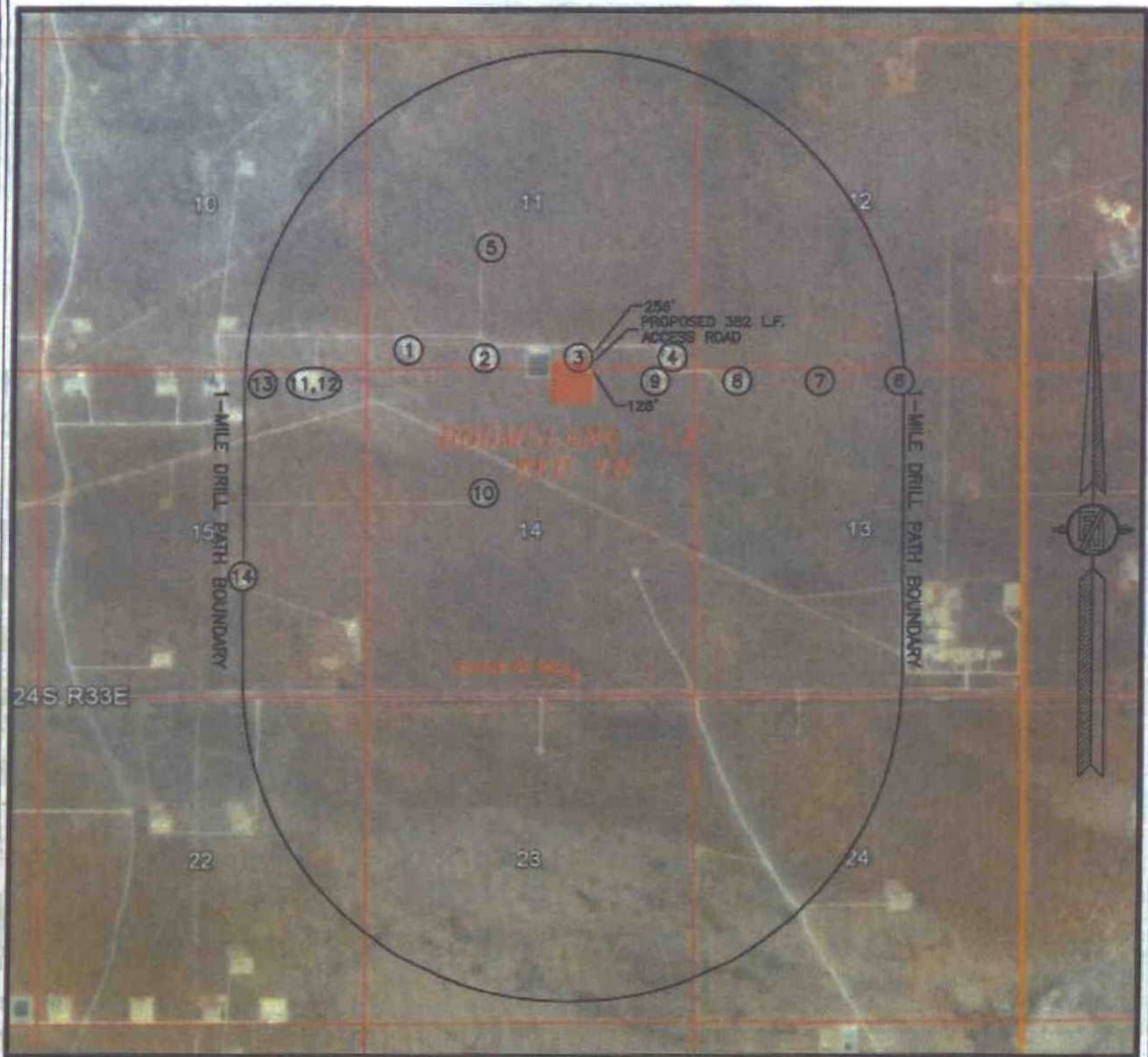
SURVEY NO. 3460

MADRON SURVEYING, INC.

301 SOUTH CANAL
(575) 234-3341

CARLSBAD, NEW MEXICO

SECTION 14, TOWNSHIP 24 SOUTH, RANGE 33 EAST, N.M.P.M.
LEA COUNTY, STATE OF NEW MEXICO
AERIAL PHOTO



NOT TO SCALE
AERIAL PHOTO:
GOOGLE EARTH
FEB. 2014

DEVON ENERGY PRODUCTION COMPANY, L.P.
BOOMSLANG "14" FED 1H
LOCATED 200 FT. FROM THE NORTH LINE
AND 1980 FT. FROM THE EAST LINE OF
SECTION 14, TOWNSHIP 24 SOUTH,
RANGE 33 EAST, N.M.P.M.
LEA COUNTY, STATE OF NEW MEXICO

NOVEMBER 17, 2014

SURVEY NO. 3460

MADRON SURVEYING, INC. 301 SOUTH CANAL (575) 234-3341 CARLSBAD, NEW MEXICO

**SECTION 14, TOWNSHIP 24 SOUTH, RANGE 33 EAST, N.M.P.M.
LEA COUNTY, STATE OF NEW MEXICO
WELLS WITHIN 1-MILE DRILL PATH BOUNDARY**

	API	Well	Type	Status	ULSTR	Current Operator
1	30-025-41099	ROY BATTY FEDERAL COM #001H	Oil	Active	M-11-24S-33E	[229137] COG OPERATING LLC
2	30-025-41332	ROY BATTY FEDERAL COM #002H	Oil	Active	N-11-24S-33E	[229137] COG OPERATING LLC
3	30-025-41333	ROY BATTY FEDERAL COM #003H	Oil	Active	O-11-24S-33E	[229137] COG OPERATING LLC
4	30-025-41334	ROY BATTY FEDERAL COM #004H	Oil	Active	P-11-24S-33E	[229137] COG OPERATING LLC
5	30-025-34246	STEVENS 11 #001	Gas	Plugged	K-11-24S-33E	[6137] DEVON ENERGY PRODUCTION COMPANY, LP
6	30-025-41383	DECKARD FEDERAL COM #003H	Oil	New	B-13-24S-33E	[229137] COG OPERATING LLC
7	30-025-41382	DECKARD FEDERAL COM #002H	Oil	New	C-13-24S-33E	[229137] COG OPERATING LLC
8	30-025-40914	DECKARD FEE #001H	Oil	Active	D-13-24S-33E	[229137] COG OPERATING LLC
9	30-025-41026	TYRELL FEE #001H	Oil	Active	A-14-24S-33E	[229137] COG OPERATING LLC
10	30-025-34050	LELA MAE STEVENS FEDERAL COM #001	Gas	Plugged	F-14-24S-33E	[7377] EOG RESOURCES INC
11	30-025-41087	JACKSON UNIT #017H	Oil	Active	A-15-24S-33E	[15363] MURCHISON OIL & GAS INC
12	30-025-41793	JACKSON UNIT #038H	Oil	New	A-15-24S-33E	[15363] MURCHISON OIL & GAS INC
13	30-025-41792	JACKSON UNIT #037H	Oil	New	B-15-24S-33E	[15363] MURCHISON OIL & GAS INC
14	30-025-34687	JACKSON UNIT #007	Gas	Active	J-15-24S-33E	[15363] MURCHISON OIL & GAS INC

DEVON ENERGY PRODUCTION COMPANY, L.P.

BOOMSLANG "14" FED 1H

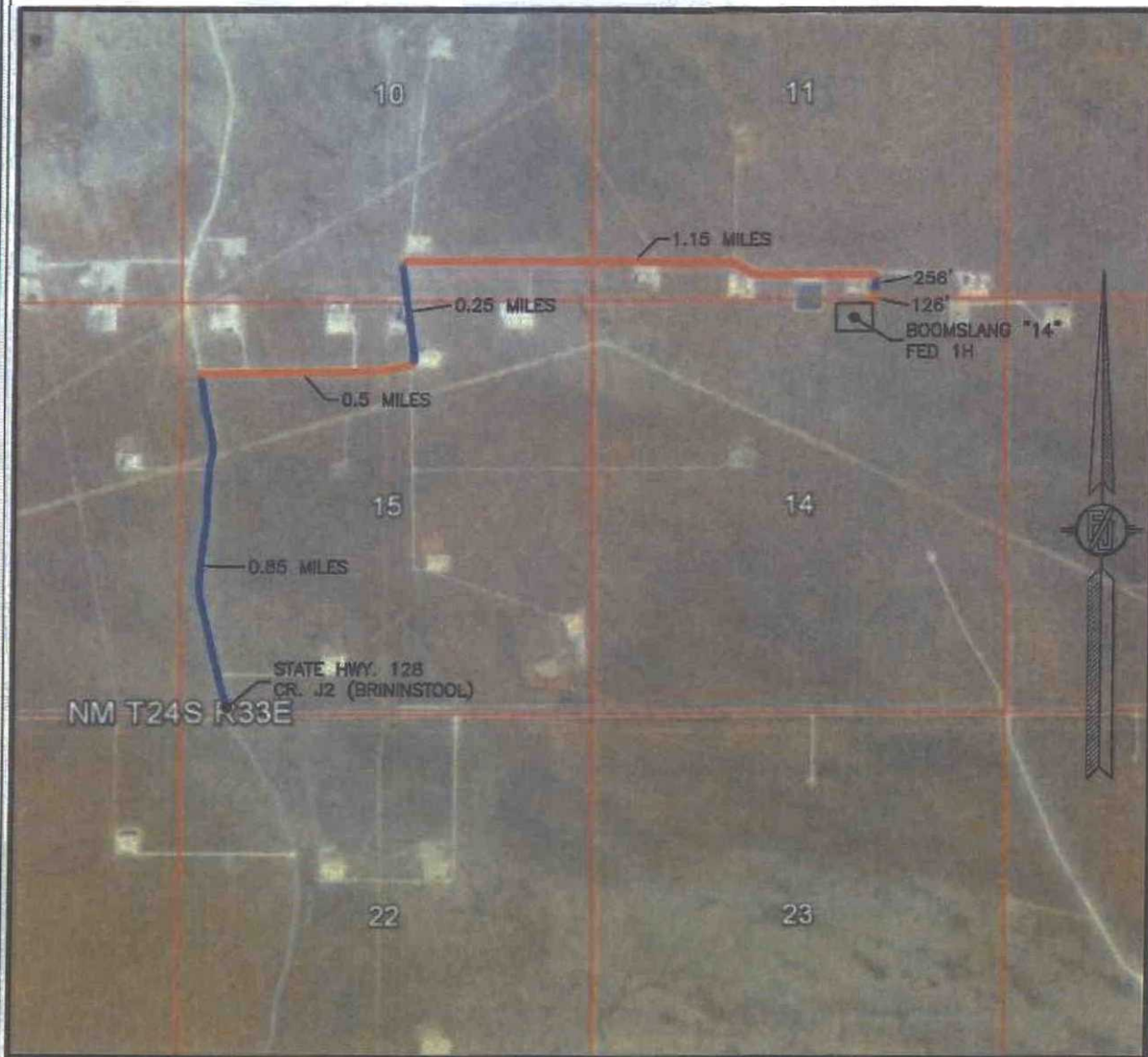
LOCATED 200 FT. FROM THE NORTH LINE
AND 1980 FT. FROM THE EAST LINE OF
SECTION 14, TOWNSHIP 24 SOUTH,
RANGE 33 EAST, N.M.P.M.
LEA COUNTY, STATE OF NEW MEXICO

NOVEMBER 17, 2014

SURVEY NO. 3460

MADRON SURVEYING, INC. 301 SOUTH CANAL (575) 234-3341 CARLSBAD, NEW MEXICO

SECTION 14, TOWNSHIP 24 SOUTH, RANGE 33 EAST, N.M.P.M.
LEA COUNTY, STATE OF NEW MEXICO
AERIAL ACCESS ROUTE MAP



NOT TO SCALE
AERIAL PHOTO:
GOOGLE EARTH
FEB. 2014

DEVON ENERGY PRODUCTION COMPANY, L.P.
BOOMSLANG "14" FED 1H

LOCATED 200 FT. FROM THE NORTH LINE
AND 1980 FT. FROM THE EAST LINE OF
SECTION 14, TOWNSHIP 24 SOUTH,
RANGE 33 EAST, N.M.P.M.
LEA COUNTY, STATE OF NEW MEXICO

NOVEMBER 17, 2014

SURVEY NO. 3460

MADRON SURVEYING, INC. 301 SOUTH CANAL (575) 234-3341 CARLSBAD, NEW MEXICO

