

DISTRICT I
1625 N. French Dr., Hobbs, NM 88240
Phone: (575) 393-6161 Fax: (575) 393-0720
DISTRICT II
811 S. First St., Artesia, NM 88210
Phone: (575) 748-1283 Fax: (575) 748-0720
DISTRICT III
1000 Rio Brazos Road, Aztec, NM 87410
Phone: (505) 334-6178 Fax: (505) 334-6170
DISTRICT IV
1220 S. St. Francis Dr., Santa Fe, NM 87505
Phone: (505) 476-3460 Fax: (505) 476-3462

State of New Mexico
Energy, Minerals & Natural Resources Department
OIL CONSERVATION DIVISION
1220 South St. Francis Dr.
Santa Fe, NM 87505

HOBBS OCD
NOV 06 2015
RECEIVED

Form C-102
Revised August 1, 2011
Submit one copy to appropriate
District Office

☐ AMENDED REPORT

WELL LOCATION AND ACREAGE DEDICATION PLAT

¹ API Number 30-025-42933	² Pool Code 96434	³ Well Name RED HILL; BONE SPRING, NORTH
⁴ Property Code 315634	⁵ Property Name BOOMSLANG 14 FED	
⁷ OGRID No. 6137	⁸ Operator Name DEVON ENERGY PRODUCTION COMPANY, L.P.	⁶ Well Number 4H
		⁹ Elevation 3601.9

¹⁰ Surface Location

UL or lot no.	Section	Township	Range	Lot Idn	Feet from the	North/South line	Feet from the	East/West line	County
B	14	24 S	33 E		200	NORTH	1930	EAST	LEA

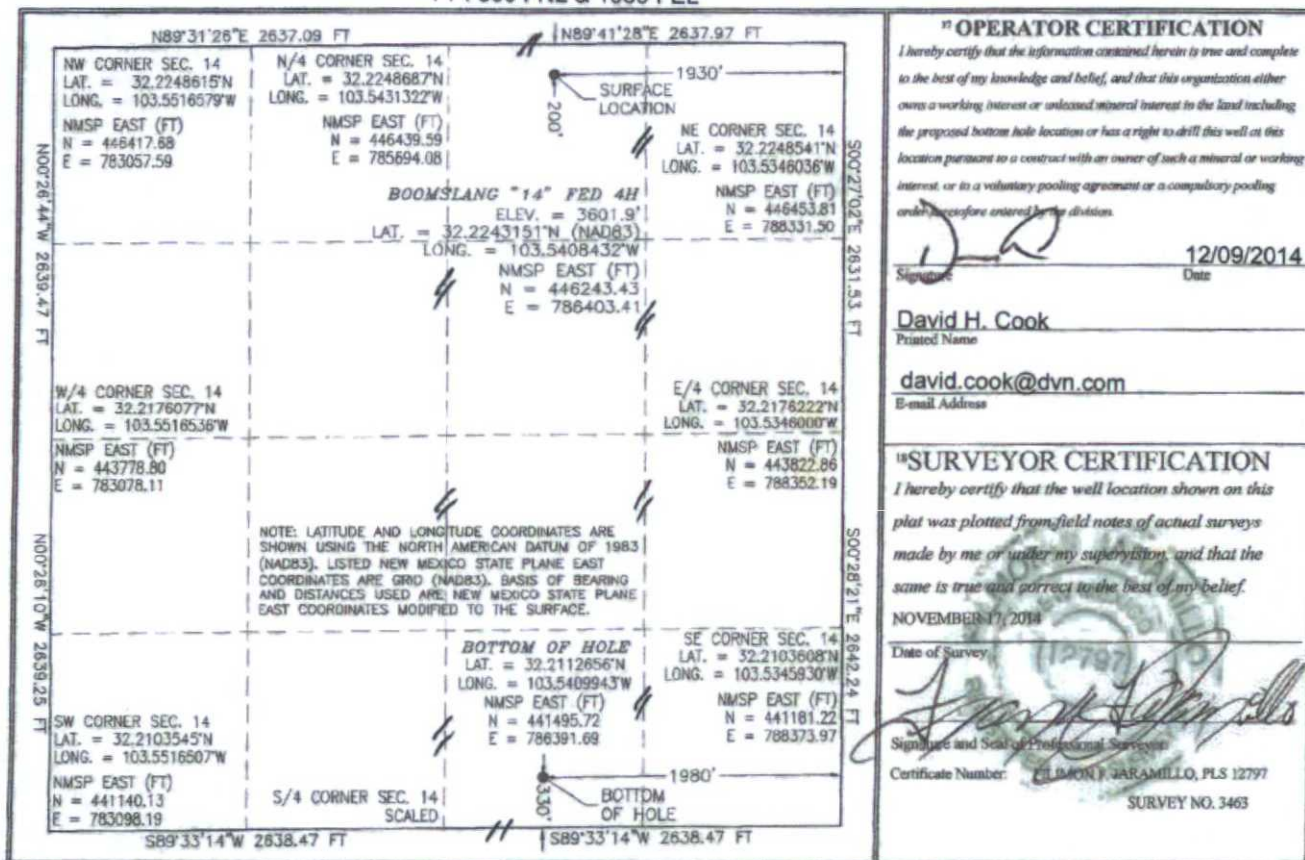
¹¹ Bottom Hole Location If Different From Surface

UL or lot no.	Section	Township	Range	Lot Idn	Feet from the	North/South line	Feet from the	East/West line	County
O	14	24 S	33 E		330	SOUTH	1980	EAST	LEA

¹² Dedicated Acres 160	¹³ Joint or Infill	¹⁴ Consolidation Code	¹⁵ Order No.
---	-------------------------------	----------------------------------	-------------------------

No allowable will be assigned to this completion until all interests have been consolidated or a non-standard unit has been approved by the division.

PP: 800 FNL & 1980 FEL



¹⁷ OPERATOR CERTIFICATION

I hereby certify that the information contained herein is true and complete to the best of my knowledge and belief, and that this organization either owns a working interest or undivided mineral interest in the land including the proposed bottom hole location or has a right to drill this well at this location pursuant to a contract with an owner of such a mineral or working interest, or is a voluntary pooling agreement or a compulsory pooling order, as provided for in the division.

Signature: *[Signature]* Date: **12/09/2014**

Printed Name: **David H. Cook**

E-mail Address: **david.cook@dmv.com**

¹⁸ SURVEYOR CERTIFICATION

I hereby certify that the well location shown on this plat was plotted from field notes of actual surveys made by me or under my supervision, and that the same is true and correct to the best of my belief.

NOVEMBER 17, 2014

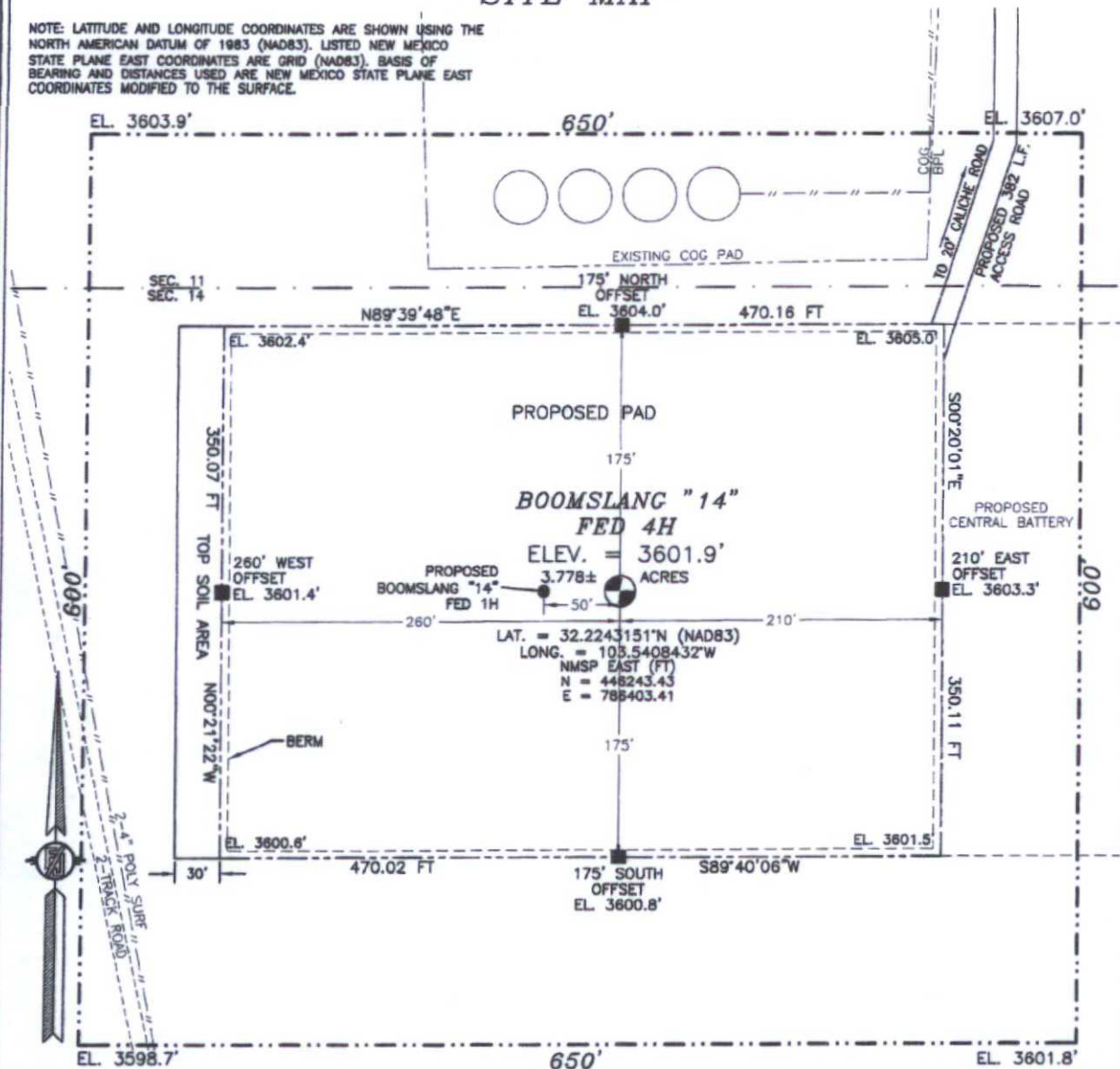
Date of Survey: *[Signature]*
Signature and Seal of Professional Surveyor

Certificate Number: **ELIACON J. JARAMILLO, PLS 12797**
SURVEY NO. 3463

NOV 09 2015

**SECTION 14, TOWNSHIP 24 SOUTH, RANGE 33 EAST, N.M.P.M.
LEA COUNTY, STATE OF NEW MEXICO
SITE MAP**

NOTE: LATITUDE AND LONGITUDE COORDINATES ARE SHOWN USING THE NORTH AMERICAN DATUM OF 1983 (NAD83). LISTED NEW MEXICO STATE PLANE EAST COORDINATES ARE GRID (NAD83). BASIS OF BEARING AND DISTANCES USED ARE NEW MEXICO STATE PLANE EAST COORDINATES MODIFIED TO THE SURFACE.



010 50 100 200

SCALE 1" = 100'

DIRECTIONS TO LOCATION

FROM STATE HWY. 128 AND CR. J2 (BRINISTOOL) GO NORTH ON J2 0.85 MILES, TURN RIGHT AND GO EAST 0.5 MILES, BEND LEFT AND GO NORTH 0.25 MILES, TURN RIGHT AND GO EAST 1.15 MILES TO A PROPOSED ROAD SURVEY AND FOLLOW FLAGS SOUTH 256° THEN SOUTH-SOUTHWEST 126° TO THE PROPOSED NORTHEAST PAD CORNER FOR THIS LOCATION

**DEVON ENERGY PRODUCTION COMPANY, L.P.
BOOMSLANG "14" FED 4H**

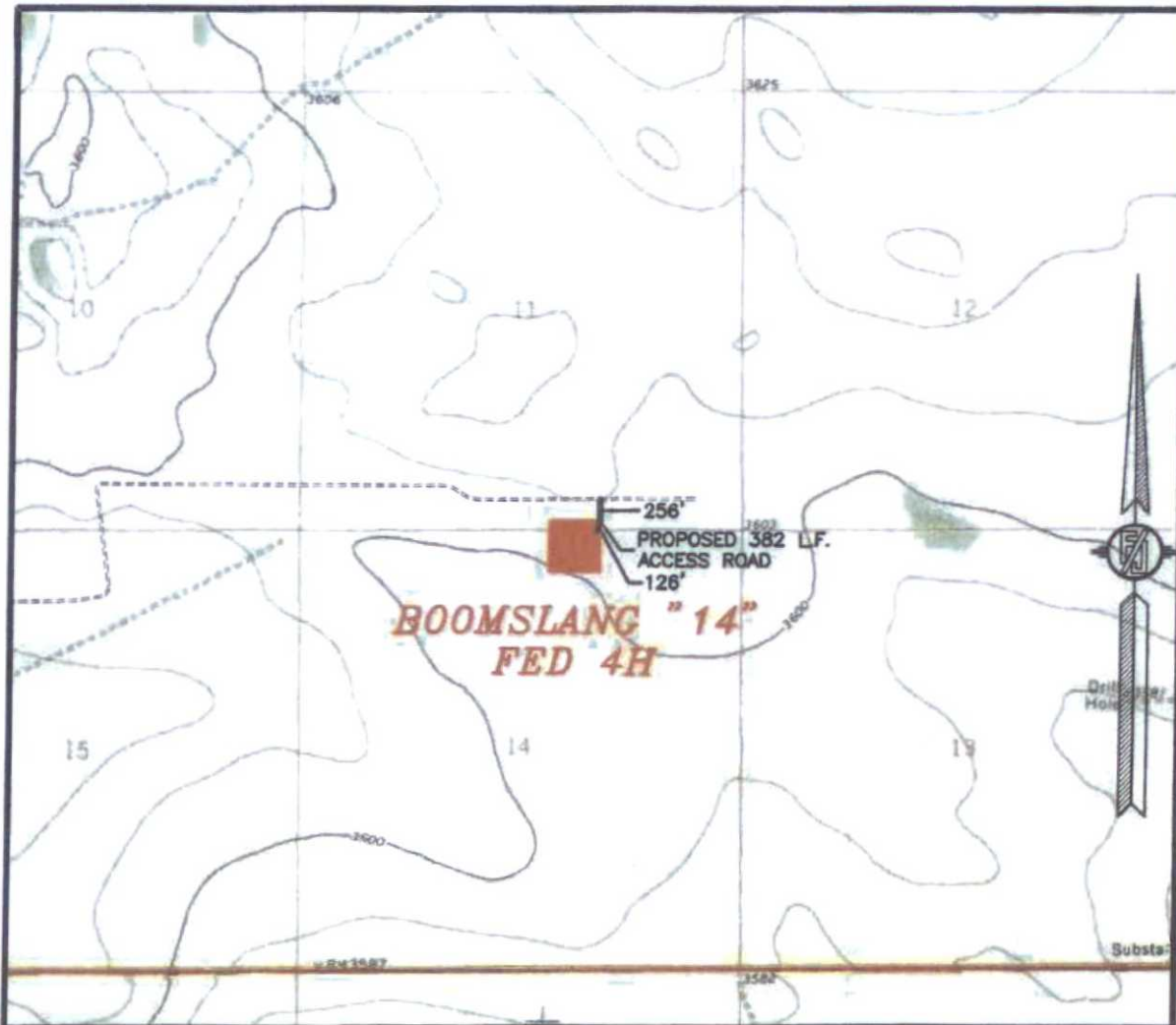
**LOCATED 200 FT. FROM THE NORTH LINE
AND 1930 FT. FROM THE EAST LINE OF
SECTION 14, TOWNSHIP 24 SOUTH,
RANGE 33 EAST, N.M.P.M.
LEA COUNTY, STATE OF NEW MEXICO**

NOVEMBER 17, 2014

SURVEY NO. 3463

MADRON SURVEYING, INC. 301 SOUTH CANAL (575) 234-3341 **CARLSBAD, NEW MEXICO**

SECTION 14, TOWNSHIP 24 SOUTH, RANGE 33 EAST, N.M.P.M.
LEA COUNTY, STATE OF NEW MEXICO
LOCATION VERIFICATION MAP



USGS QUAD MAP:
BELL LAKE

NOT TO SCALE

DEVON ENERGY PRODUCTION COMPANY, L.P.

BOOMSLANG "14" FED 4H

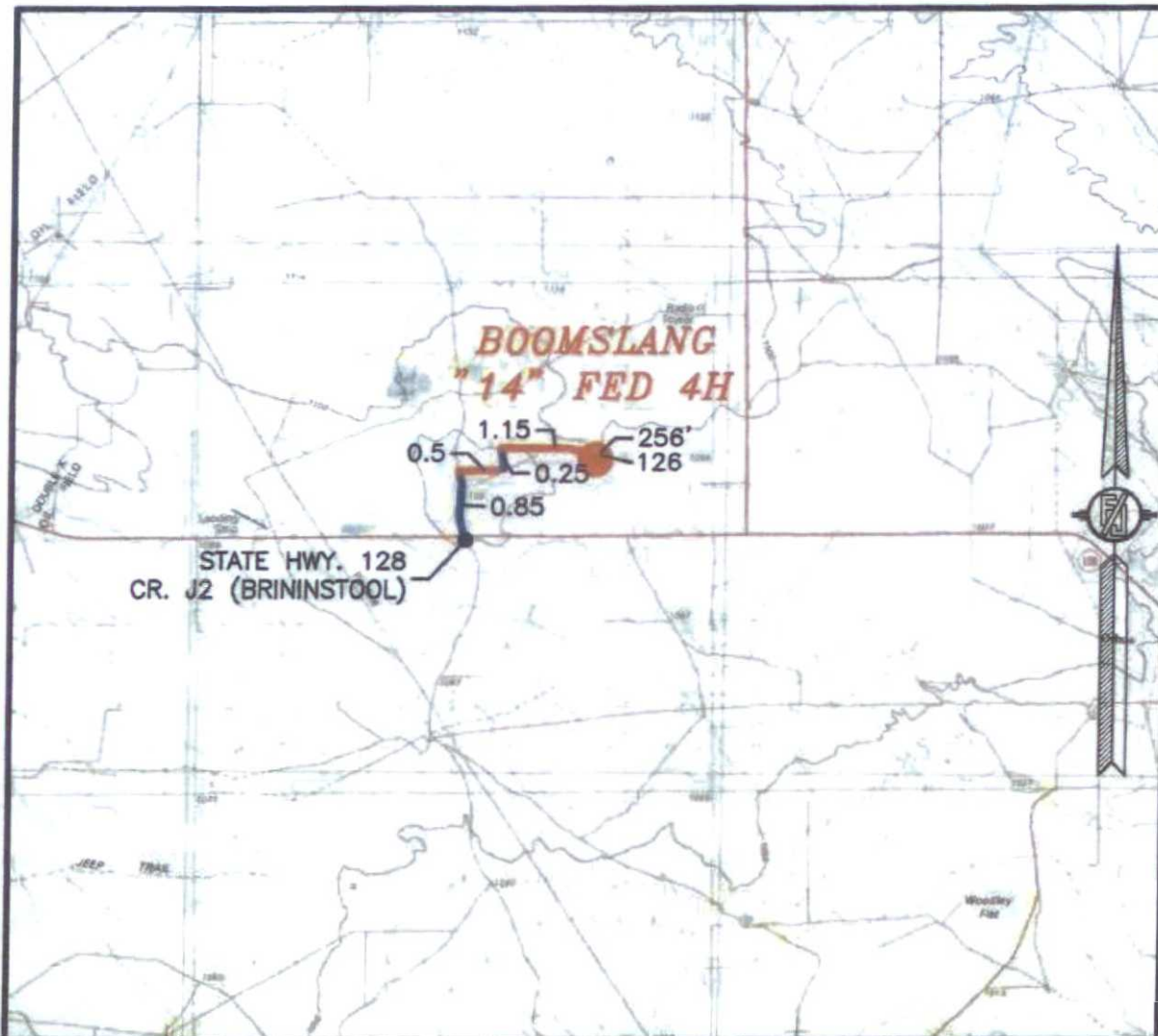
LOCATED 200 FT. FROM THE NORTH LINE
AND 1930 FT. FROM THE EAST LINE OF
SECTION 14, TOWNSHIP 24 SOUTH,
RANGE 33 EAST, N.M.P.M.
LEA COUNTY, STATE OF NEW MEXICO

NOVEMBER 17, 2014

SURVEY NO. 3463

MADRON SURVEYING, INC. 301 SOUTH CANAL (575) 234-3341 CARLSBAD, NEW MEXICO

SECTION 14, TOWNSHIP 24 SOUTH, RANGE 33 EAST, N.M.P.M.
LEA COUNTY, STATE OF NEW MEXICO
VICINITY MAP



DISTANCES IN MILES

NOT TO SCALE

DIRECTIONS TO LOCATION
FROM STATE HWY. 128 AND CR. J2 (BRINSTOOL) GO NORTH ON J2 0.85 MILES, TURN RIGHT AND GO EAST 0.5 MILES, BEND LEFT AND GO NORTH 0.25 MILES, TURN RIGHT AND GO EAST 1.15 MILES TO A PROPOSED ROAD SURVEY AND FOLLOW FLAGS SOUTH 256' THEN SOUTH-SOUTHWEST 126' TO THE PROPOSED NORTHEAST PAD CORNER FOR THIS LOCATION

DEVON ENERGY PRODUCTION COMPANY, L.P.

BOOMSLANG "14" FED 4H

LOCATED 200 FT. FROM THE NORTH LINE

AND 1930 FT. FROM THE EAST LINE OF

SECTION 14, TOWNSHIP 24 SOUTH,

RANGE 33 EAST, N.M.P.M.

LEA COUNTY, STATE OF NEW MEXICO

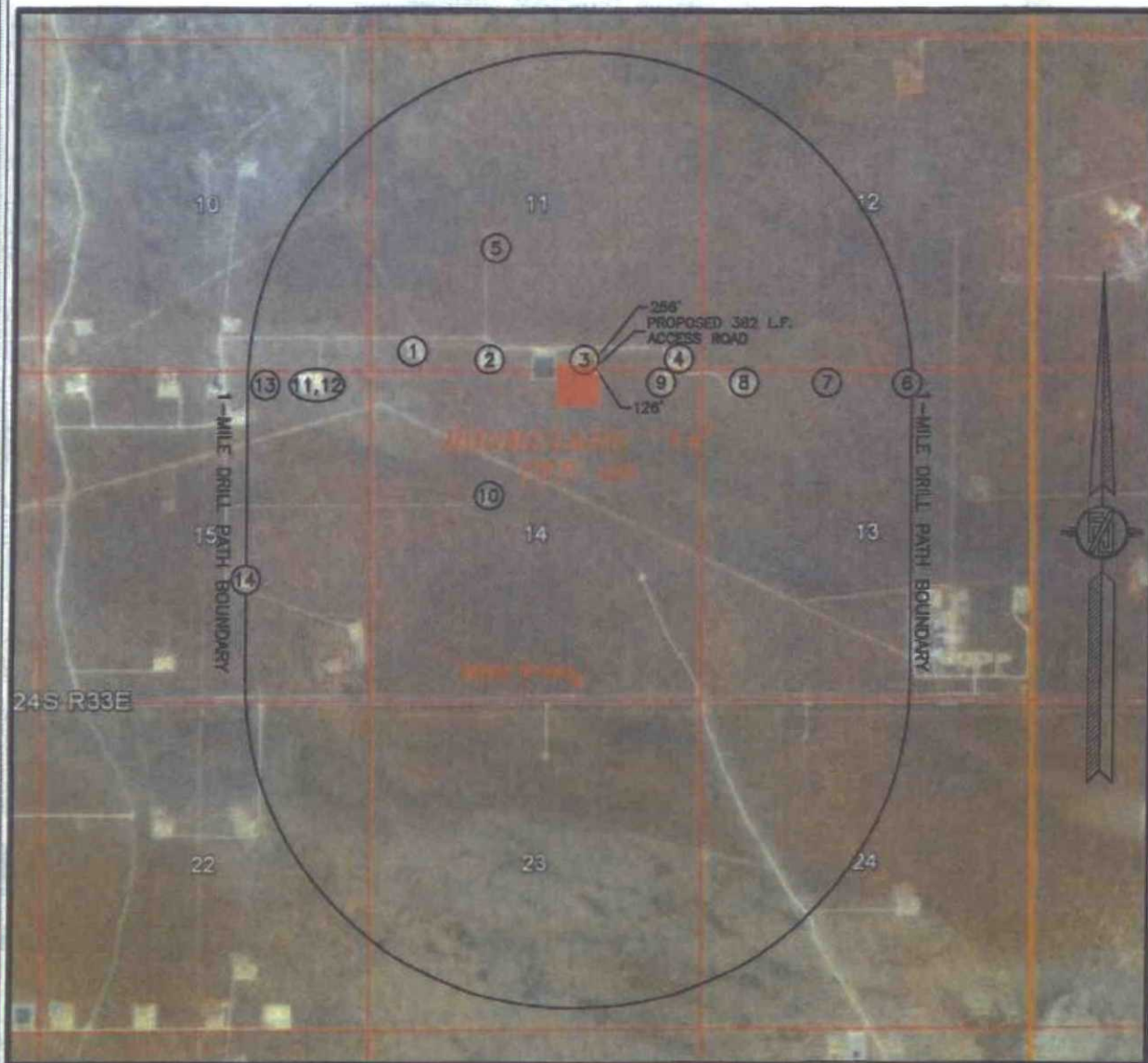
NOVEMBER 17, 2014

SURVEY NO. 3463

MADRON SURVEYING, INC. 301 SOUTH CANAL (979) 234-3341

CARLSBAD, NEW MEXICO

SECTION 14, TOWNSHIP 24 SOUTH, RANGE 33 EAST, N.M.P.M.
LEA COUNTY, STATE OF NEW MEXICO
AERIAL PHOTO



NOT TO SCALE
AERIAL PHOTO:
GOOGLE EARTH
FEB. 2014

DEVON ENERGY PRODUCTION COMPANY, L.P.

BOOMSLANG "14" FED 4H

LOCATED 200 FT. FROM THE NORTH LINE
AND 1930 FT. FROM THE EAST LINE OF
SECTION 14, TOWNSHIP 24 SOUTH,
RANGE 33 EAST, N.M.P.M.
LEA COUNTY, STATE OF NEW MEXICO

NOVEMBER 17, 2014

SURVEY NO. 3463

MADRON SURVEYING, INC. 301 SOUTH CANAL (575) 234-3341 CARLSBAD, NEW MEXICO

**SECTION 14, TOWNSHIP 24 SOUTH, RANGE 33 EAST, N.M.P.M.
LEA COUNTY, STATE OF NEW MEXICO
WELLS WITHIN 1-MILE DRILL PATH BOUNDARY**

	API	Well	Type	Status	ULSTR	Current Operator
1	30-025-41099	ROY BATTY FEDERAL COM #001H	Oil	Active	M-11-24S-33E	[229137] COG OPERATING LLC
2	30-025-41332	ROY BATTY FEDERAL COM #002H	Oil	Active	N-11-24S-33E	[229137] COG OPERATING LLC
3	30-025-41333	ROY BATTY FEDERAL COM #003H	Oil	Active	O-11-24S-33E	[229137] COG OPERATING LLC
4	30-025-41334	ROY BATTY FEDERAL COM #004H	Oil	Active	P-11-24S-33E	[229137] COG OPERATING LLC
5	30-025-34246	STEVENS 11 #001	Gas	Plugged	K-11-24S-33E	[6137] DEVON ENERGY PRODUCTION COMPANY, LP
6	30-025-41383	DECKARD FEDERAL COM #003H	Oil	New	B-13-24S-33E	[229137] COG OPERATING LLC
7	30-025-41382	DECKARD FEDERAL COM #002H	Oil	New	C-13-24S-33E	[229137] COG OPERATING LLC
8	30-025-40914	DECKARD FEE #001H	Oil	Active	D-13-24S-33E	[229137] COG OPERATING LLC
9	30-025-41026	TYRELL FEE #001H	Oil	Active	A-14-24S-33E	[229137] COG OPERATING LLC
10	30-025-34050	LELA MAE STEVENS FEDERAL COM #001	Gas	Plugged	F-14-24S-33E	[7377] EDG RESOURCES INC
11	30-025-41087	JACKSON UNIT #017H	Oil	Active	A-15-24S-33E	[15363] MURCHISON OIL & GAS INC
12	30-025-41793	JACKSON UNIT #038H	Oil	New	A-15-24S-33E	[15363] MURCHISON OIL & GAS INC
13	30-025-41792	JACKSON UNIT #037H	Oil	New	B-15-24S-33E	[15363] MURCHISON OIL & GAS INC
14	30-025-34687	JACKSON UNIT #007	Gas	Active	J-15-24S-33E	[15363] MURCHISON OIL & GAS INC

**DEVON ENERGY PRODUCTION COMPANY, L.P.
BOOMSLANG "14" FED 4H
LOCATED 200 FT. FROM THE NORTH LINE
AND 1930 FT. FROM THE EAST LINE OF
SECTION 14, TOWNSHIP 24 SOUTH,
RANGE 33 EAST, N.M.P.M.
LEA COUNTY, STATE OF NEW MEXICO**

NOVEMBER 17, 2014

SURVEY NO. 3463

MADRON SURVEYING, INC. 301 SOUTH CANAL (575) 234-3341 CARLSBAD, NEW MEXICO

SECTION 14, TOWNSHIP 24 SOUTH, RANGE 33 EAST, N.M.P.M.
LEA COUNTY, STATE OF NEW MEXICO
AERIAL ACCESS ROUTE MAP



NOT TO SCALE
AERIAL PHOTO:
GOOGLE EARTH
FEB. 2014

DEVON ENERGY PRODUCTION COMPANY, L.P.
BOOMSLANG "14" FED 4H

LOCATED 200 FT. FROM THE NORTH LINE
AND 1930 FT. FROM THE EAST LINE OF
SECTION 14, TOWNSHIP 24 SOUTH,
RANGE 33 EAST, N.M.P.M.
LEA COUNTY, STATE OF NEW MEXICO

NOVEMBER 17, 2014

SURVEY NO. 3463

MADRON SURVEYING, INC. 301 SOUTH CANAL (575) 234-3341 CARLSBAD, NEW MEXICO

One Mile Radius Map

Estimated distances to nearest wellbores:

*From SHL: Tyrell Fee 1H 1375 ft E
 *From BHL: Roy Batty Federal Com 3H 525 ft N

24S 33E

10

11

12

15

14

13

22

23

24

devon

Boomsiang 14 Fed 4H

1 Mile Radius Map

0 1,968
 FEET



WELL SYMBOLS
 DRY AND ABANDONED WELL
 DRILLING WELL
 OIL PRODUCING WELL
 PROPOSED
 TEMPORARILY ABANDONED WELL
 AT TD

December 9, 2014

JACKSON UNIT
 25H

BOOMSLANG 14 FED
 4H

BHL

SHL

STEVENS '11'
 1

ROY BATTY FEDERAL COM
 1H

JACKSON UNIT
 17H

1 MILE

ROY BATTY FEDERAL COM
 2H

STEVENS LELA MAE FEDERAL COM

ROY BATTY FEDERAL COM
 3H

ROY BATTY FEDERAL COM
 4H

TYRELL FEE
 1H

DECKARD FEDERAL COM
 2H

DECKARD FEE
 1H

DECKARD FEDERAL COM
 3H