

District I
1625 N. French Dr., Hobbs, NM 88240
Phone: (575) 393-6161 Fax: (575) 393-0720
District II
811 S. First St., Artesia, NM 88210
Phone: (575) 748-1283 Fax: (575) 748-9720
District III
1000 Rio Brazos Road, Aztec, NM 87410
Phone: (505) 334-6178 Fax: (505) 334-6170
District IV
1220 S. St. Francis Dr., Santa Fe, NM 87505
Phone: (505) 476-3460 Fax: (505) 476-3462

State of New Mexico
Energy, Minerals & Natural Resources Department
OIL CONSERVATION DIVISION
1220 South St. Francis Dr.
Santa Fe, NM 87505

Form C-102
Revised August 1, 2011
Submit one copy to appropriate
District Office

☐ AMENDED REPORT

WELL LOCATION AND ACREAGE DEDICATION PLAT

¹ API Number 30-025-42941	² Pool Code 97647	³ Pool Name MALTAMAR; Paddock, North
⁴ Property Code 315648	⁵ Property Name CHIPOTLE STATE COM	
⁷ OGRID NO. 873	⁸ Operator Name APACHE CORPORATION	
		⁶ Well Number 2H
		⁹ Elevation 4349'

¹⁰ Surface Location

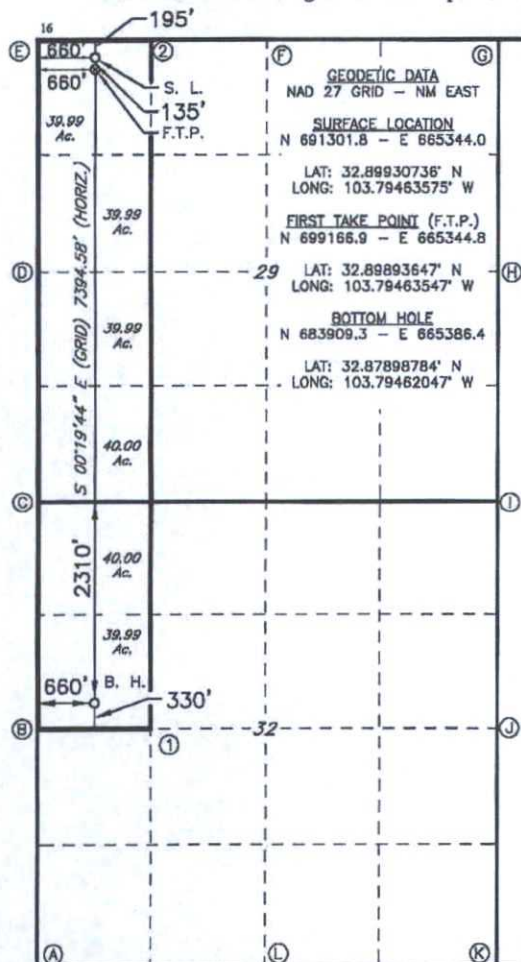
UL or lot no.	Section	Township	Range	Lot Idn	Feet from the	North/South line	Feet from the	East/West line	County
D	29	16S	32E		195	NORTH	660	WEST	LEA

¹¹ Bottom Hole Location If Different From Surface

UL or lot no.	Section	Township	Range	Lot Idn	Feet from the	North/South line	Feet from the	East/West line	County
E	32	16S	32E		2310	NORTH	660	WEST	LEA

¹² Dedicated Acres 239.96	¹³ Joint or Infill	¹⁴ Consolidation Code	¹⁵ Order No.
--	-------------------------------	----------------------------------	-------------------------

No allowable will be assigned to this completion until all interest have been consolidated or a non-standard unit has been approved by the division.



CORNER DATA
NAD 27 GRID - NM EAST

A: FOUND BRASS CAP "1918"
N 680938.4 - E 664744.3
B: FOUND BRASS CAP "1918"
N 683577.5 - E 664728.6
C: FOUND 1/2" REBAR
N 686216.6 - E 664712.4
D: FOUND BRASS CAP "1918"
N 688555.5 - E 664698.3
E: FOUND BRASS CAP "1918"
N 681494.8 - E 664682.8
F: FOUND BRASS CAP "1918"
N 681502.9 - E 667321.8
G: FOUND 2" IRON BAR
N 681511.4 - E 669961.3
H: FOUND BRASS CAP "1913"
N 688872.3 - E 669977.8
I: FOUND BRASS CAP "1918"
N 686233.3 - E 669991.6
J: FOUND BRASS CAP "1918"
N 683594.3 - E 670006.8
K: FOUND BRASS CAP "1918"
N 680956.5 - E 670022.6
L: FOUND BRASS CAP "1918"
N 680946.8 - E 667382.6
1: CALCULATED POINT
N 683581.7 - E 668048.0
2: CALCULATED POINT
N 681498.8 - E 668002.3

¹⁷ OPERATOR CERTIFICATION

I hereby certify that the information contained herein is true and complete to the best of my knowledge and belief, and that this organization either owns a working interest or unleased mineral interest in the land including the proposed bottom hole location or has a right to drill this well at this location pursuant to a contract with an owner of such a mineral or working interest, or to a voluntary pooling agreement or a compulsory pooling order heretofore entered by the division.

Signature: *Susan Blakemore*
Date: _____
Printed Name: **Susan Blakemore**
E-mail Address: **Susan.blakemore@apachecorp.com**

¹⁸ SURVEYOR CERTIFICATION

I hereby certify that the well location shown on this plat was plotted from field notes of actual surveys made by me or under my supervision, and that the same is true and correct to the best of my belief.

10-13-2015

Date of Survey

Signature and Seal of Professional Surveyor

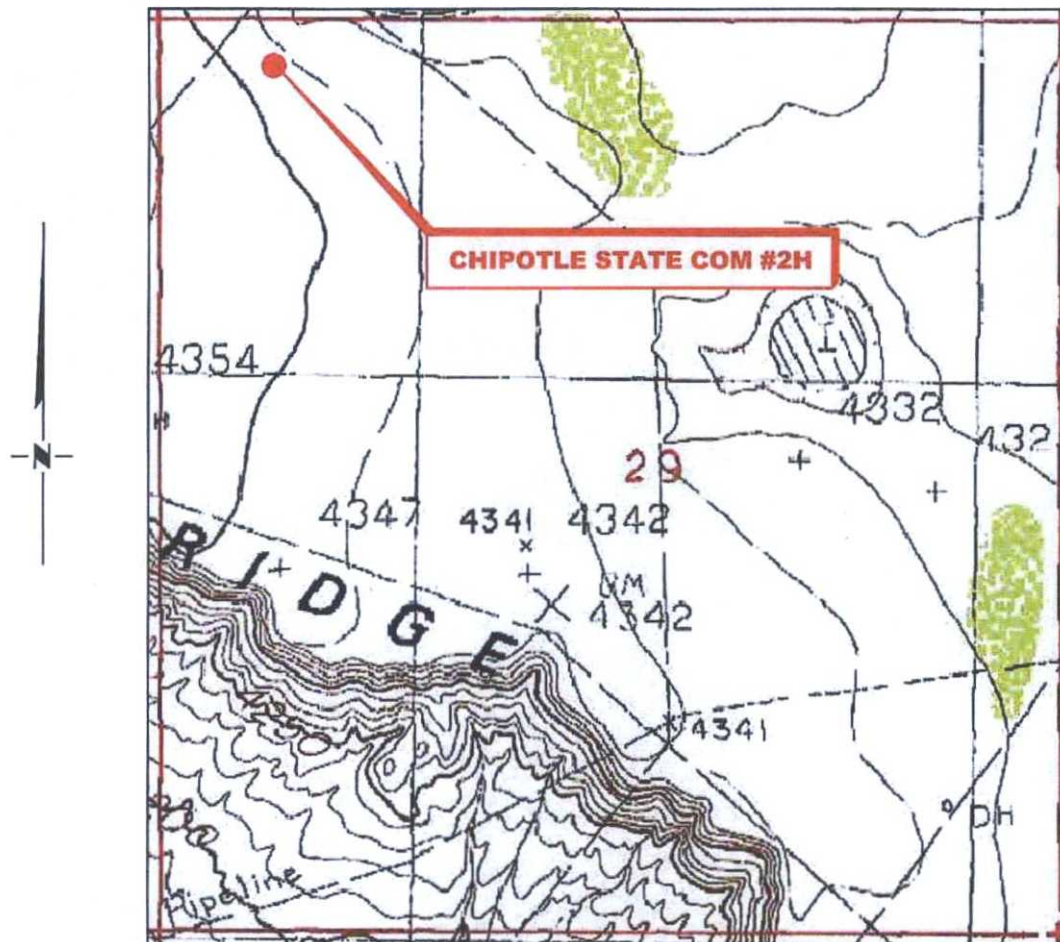
19680

Certificate Number

RRC - Firm No.: TX 10193838 NM 4655451 - Job No.: LS1510562

DEC 10 2015

LOCATION VERIFICATION MAP



(Maljamar, NM, is located approx. 3.4 miles to the Southeast.)

**SECTION 29, TWP. 16 SOUTH, RGE. 32 EAST,
N. M. P. M., LEA CO., NEW MEXICO**

OPERATOR: Apache Corporation
LEASE: Chipotle State Com
WELL NO.: 2H
ELEVATION: 4349'

LOCATION: 195' FNL & 660' FWL
CONTOUR INTERVAL: 10'
USGS TOPO. SOURCE MAP:
Maljamar NE, NM (1985)

Firm No.: TX 10193838 NM 4655451

Copyright 2015 - All Rights Reserved

NO.	REVISION	DATE
JOB NO.:	LS1510562	
DWG. NO.:	1510562LVM	

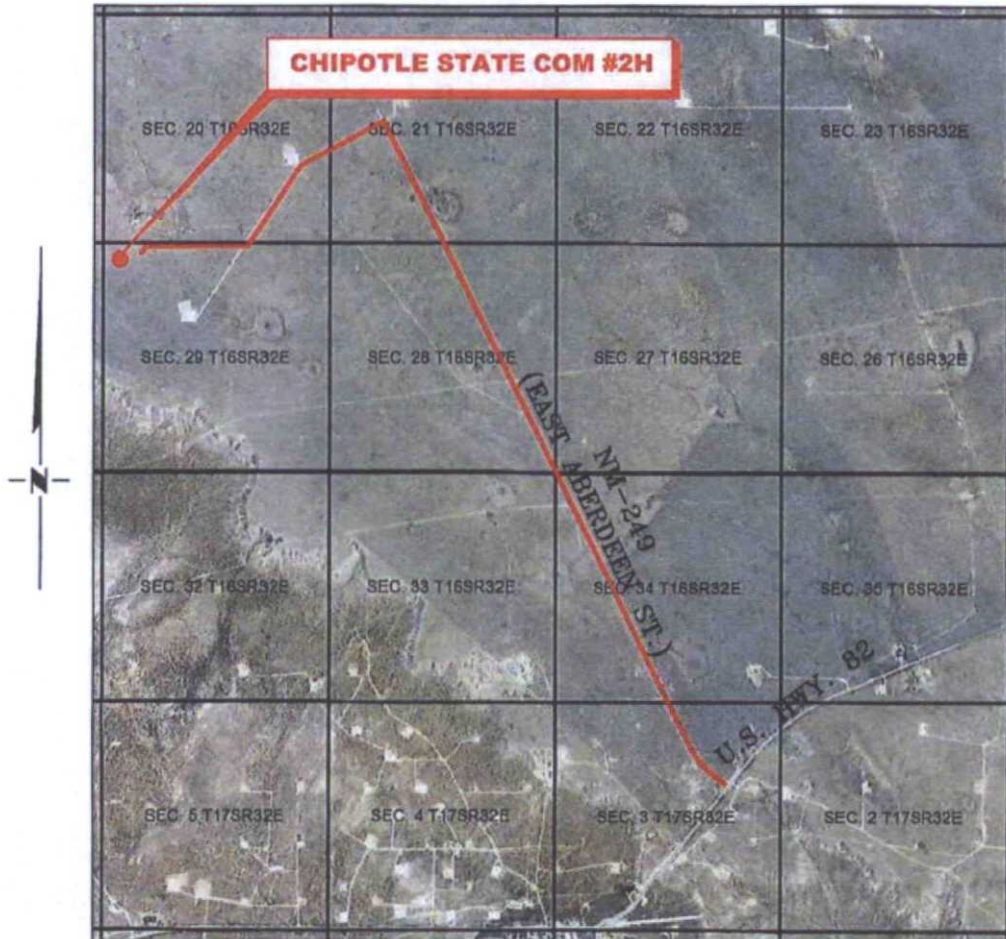
RRC

308 W. BROADWAY ST., HOBBS, NM 88240 (575) 964-8200

SCALE:	1000'
DATE:	10-13-2015
SURVEYED BY:	BK/CG
DRAWN BY:	LPS
APPROVED BY:	RMH
SHEET :	1 OF 1

VICINITY MAP

NOT TO SCALE



**SECTION 29, TWP. 16 SOUTH, RGE. 32 EAST,
N. M. P. M., LEA CO., NEW MEXICO**

OPERATOR: Apache Corporation
LEASE: Chipotle State Com
WELL NO.: 2H

LOCATION: 195' FNL & 660' FWL
ELEVATION: 4349'

Firm No.: TX 10193838 NM 4655451

Copyright 2014 - All Rights Reserved

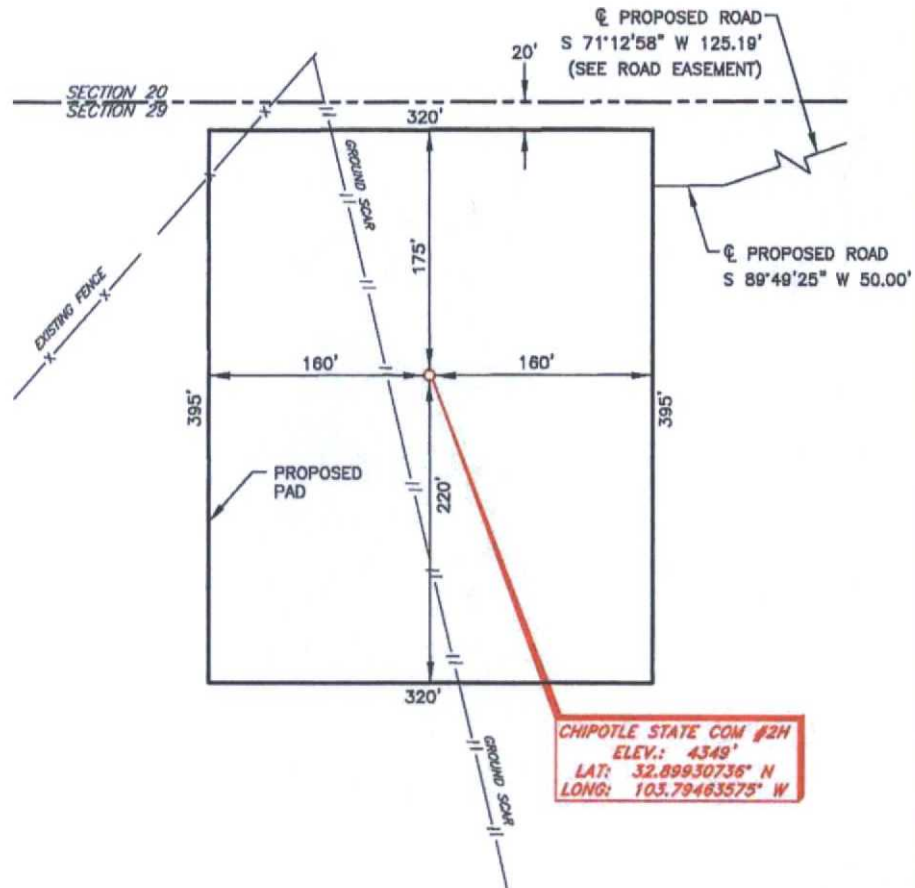
NO.	REVISION	DATE
JOB NO.:	LS1510562	
DWG. NO.:	1510562VM	

RRC

308 W. BROADWAY ST., HOBBS, NM 88240 (575) 964-8200

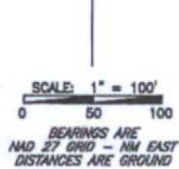
SCALE: NTS
DATE: 10-13-2015
SURVEYED BY: BK/CG
DRAWN BY: LPS
APPROVED BY: RMH
SHEET : 1 OF 1

APACHE CORPORATION
 CHIPOTLE STATE COM #2H
 (195' FNL & 660' FWL)
 SECTION 29, T16S, R32E
 N. M. P. M., LEA COUNTY, NEW MEXICO



DIRECTIONS TO LOCATION

From the intersection of U.S. Hwy. 82 and NM-249 (East Aberdeen St.)
 Go Northwest on NM-249 approx. 3.3 miles to a lease road on the left;
 Turn left and go Southwest approx. 0.8 miles to a proposed road on the right;
 Turn right on proposed road and go West approx. 0.4 miles;
 Turn left and go Southwest approx. 125 feet;
 Turn right and go West approx. 210 feet to location on the left.



Firm No.: TX 10193838 NM 4655451

Copyright 2014 - All Rights Reserved

NO.	REVISION	DATE
JOB NO.:	LS1510562	
DWG. NO.:	1510562PAD	

RRC

308 W. BROADWAY ST., HOBBS, NM 88240 (575) 964-8200

SCALE: 1" = 100'
DATE: 10-13-2015
SURVEYED BY: BK/CG
DRAWN BY: LPS
APPROVED BY: RMH
SHEET : 1 OF 1