

District I
1625 N. French Dr., Hobbs, NM 88240
Phone: (575) 393-6181 Fax: (575) 393-0720
District II
811 S. First St., Artesia, NM 88210
Phone: (575) 748-1283 Fax: (575) 748-0720
District III
1000 Rio Brazos Road, Aztec, NM 87410
Phone: (505) 334-6178 Fax: (505) 334-6170
District IV
1220 S. St. Francis Dr., Santa Fe, NM 87505
Phone: (505) 476-3460 Fax: (505) 476-3462

State of New Mexico
Energy, Minerals & Natural Resources Department
OIL CONSERVATION DIVISION
1220 South St. Francis Dr.
Santa Fe, NM 87505

Form C-102
Revised August 1, 2011
Submit one copy to appropriate
District Office
☒ AMENDED REPORT

WELL LOCATION AND ACREAGE DEDICATION PLAT

¹ API Number 30-025-42784	² Pool Code 59900	³ Pool Name TRIPLE X; BONE SPRING
⁴ Property Code 30884	⁵ Property Name THISTLE UNIT	⁶ Well Number 96H
⁷ OGRID No. 6137	⁸ Operator Name DEVON ENERGY PRODUCTION COMPANY, L.P.	⁹ Elevation 3706.3

¹⁰ Surface Location

UL or lot no.	Section	Township	Range	Lot Idn	Feet from the	North/South line	Feet from the	East/West line	County
A	22	23 S	33 E		250	NORTH	300	EAST	LEA

¹¹ Bottom Hole Location If Different From Surface

UL or lot no.	Section	Township	Range	Lot Idn	Feet from the	North/South line	Feet from the	East/West line	County
H	27	23 S	33 E		2590	NORTH	350	EAST	LEA

¹² Dedicated Acres	¹³ Joint or Infill	¹⁴ Consolidation Code	¹⁵ Order No.
240			

No allowable will be assigned to this completion until all interests have been consolidated or a non-standard unit has been approved by the division.

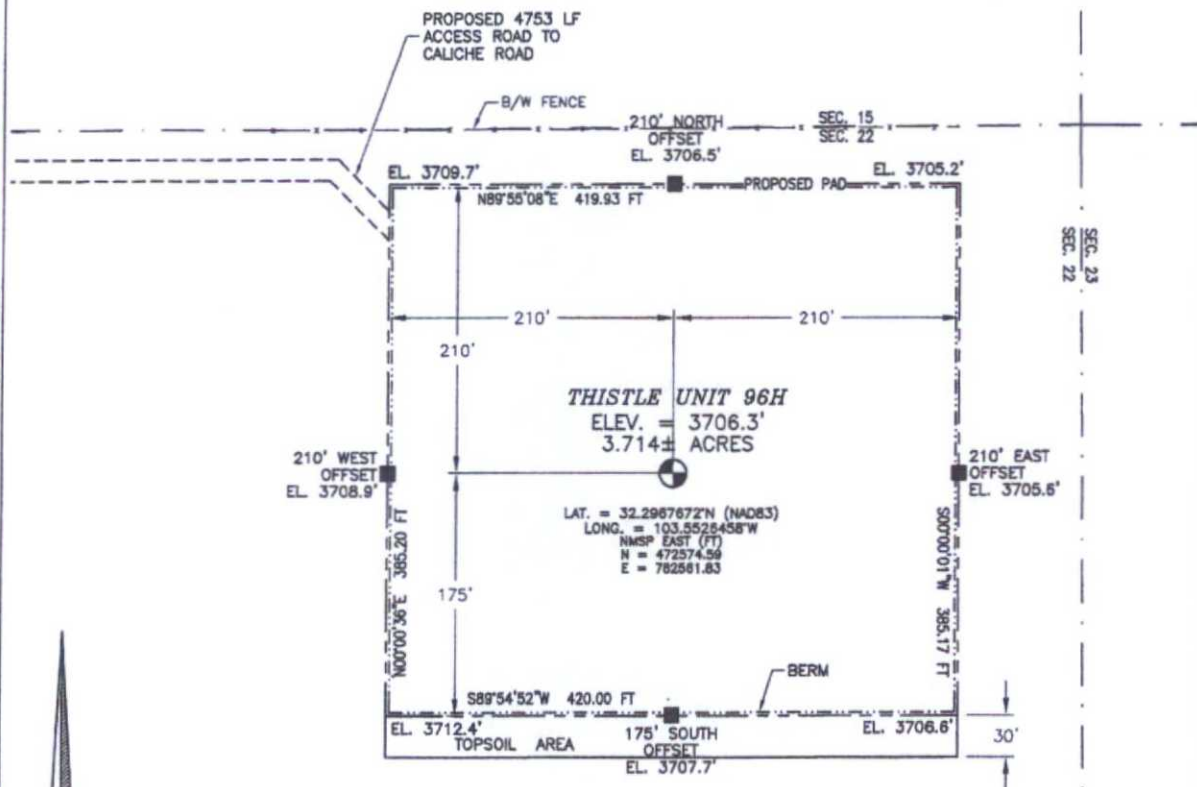
	<p>" OPERATOR CERTIFICATION</p> <p>I hereby certify that the information contained herein is true and complete to the best of my knowledge and belief, and that this organization either owns a working interest or related mineral interest in the land including the proposed bottom hole location or has a right to drill this well at this location pursuant to a contract with an owner of such a mineral or working interest, or to a voluntary pooling agreement or a compulsory pooling order heretofore entered by the division.</p> <p>Signature: <i>David H. Cook</i> Date: 12/21/2015</p> <p>Printed Name: David H. Cook</p> <p>E-mail Address: david.cook@devn.com</p> <hr/> <p>"SURVEYOR CERTIFICATION</p> <p>I hereby certify that the well location shown on this plat was plotted from field notes of actual surveys made by me or under my supervision, and that the same is true and correct to the best of my belief.</p> <p>DECEMBER 16, 2015</p> <p>Date of Survey: 12/21/2015</p> <p>Signature and Seal of Professional Surveyor: <i>William F. Jaramillo</i></p> <p>Certificate Number: WILLIAM F. JARAMILLO, PLS 12797</p> <p>SURVEY NO. 3808E</p>
--	---

DEC 21 2015

SECTION 22, TOWNSHIP 23 SOUTH, RANGE 33 EAST, N.M.P.M.
LEA COUNTY, STATE OF NEW MEXICO

SITE MAP

NOTE: LATITUDE AND LONGITUDE COORDINATES ARE SHOWN USING THE NORTH AMERICAN DATUM OF 1983 (NAD83). LISTED NEW MEXICO STATE PLANE EAST COORDINATES ARE GRID (NAD83). BASIS OF BEARING AND DISTANCES USED ARE NEW MEXICO STATE PLANE EAST COORDINATES MODIFIED TO THE SURFACE



0 12 60 120 240

SCALE 1" = 120'

DIRECTIONS TO LOCATION

FROM STATE HIGHWAY 128 AND CR 21 (DELAWARE BASIN) GO NORTH ON CR 21 3.95 MILES, TURN LEFT ON PAVED ROAD (XL ROAD) AND GO WEST 3.4 MILES, TURN RIGHT ON CALICHE ROAD AND GO NORTH 0.9 MILE, BEND LEFT AND NORTHWEST 0.15 MILE, BEND RIGHT AND GO NORTHEAST 0.1 MILE, BEND LEFT GO NORTH 0.95 MILE ON RIGHT SIDE BEGIN PROPOSED ROAD, FOLLOW EAST 4753' TO NORTHWEST PAD CORNER.

DEVON ENERGY PRODUCTION COMPANY, L.P.

THISTLE UNIT 96H

LOCATED 250 FT. FROM THE NORTH LINE
AND 300 FT. FROM THE EAST LINE OF

SECTION 22, TOWNSHIP 23 SOUTH,
RANGE 33 EAST, N.M.P.M.

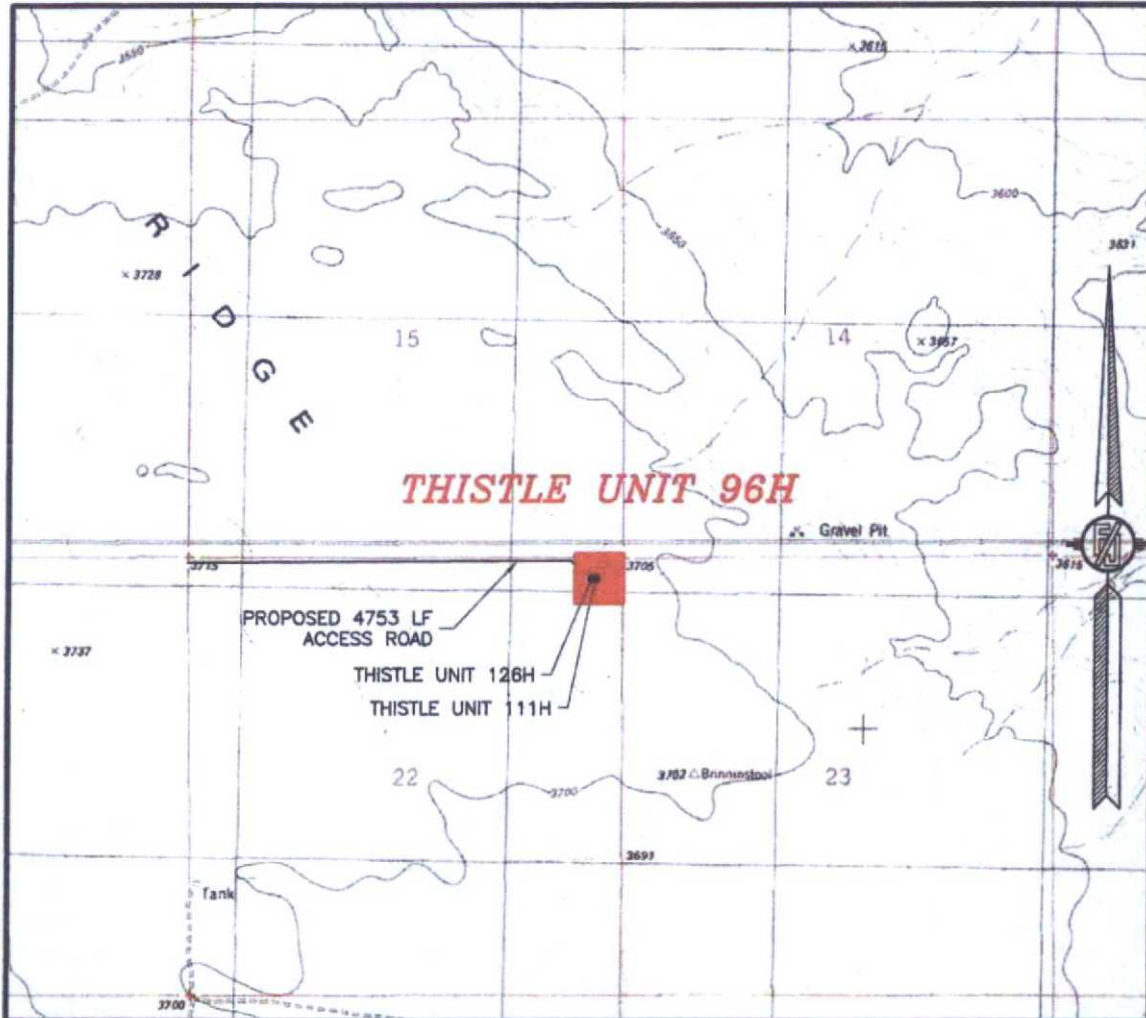
LEA COUNTY, STATE OF NEW MEXICO

DECEMBER 16, 2015

SURVEY NO. 3808E

MADRON SURVEYING, INC. 301 SOUTH CANAL (575) 234-3341 CARLSBAD, NEW MEXICO

SECTION 22, TOWNSHIP 23 SOUTH, RANGE 33 EAST, N.M.P.M.
LEA COUNTY, STATE OF NEW MEXICO
LOCATION VERIFICATION MAP



USGS QUAD MAP:
TIP TOP WELLS

NOT TO SCALE

DEVON ENERGY PRODUCTION COMPANY, L.P.

THISTLE UNIT 96H

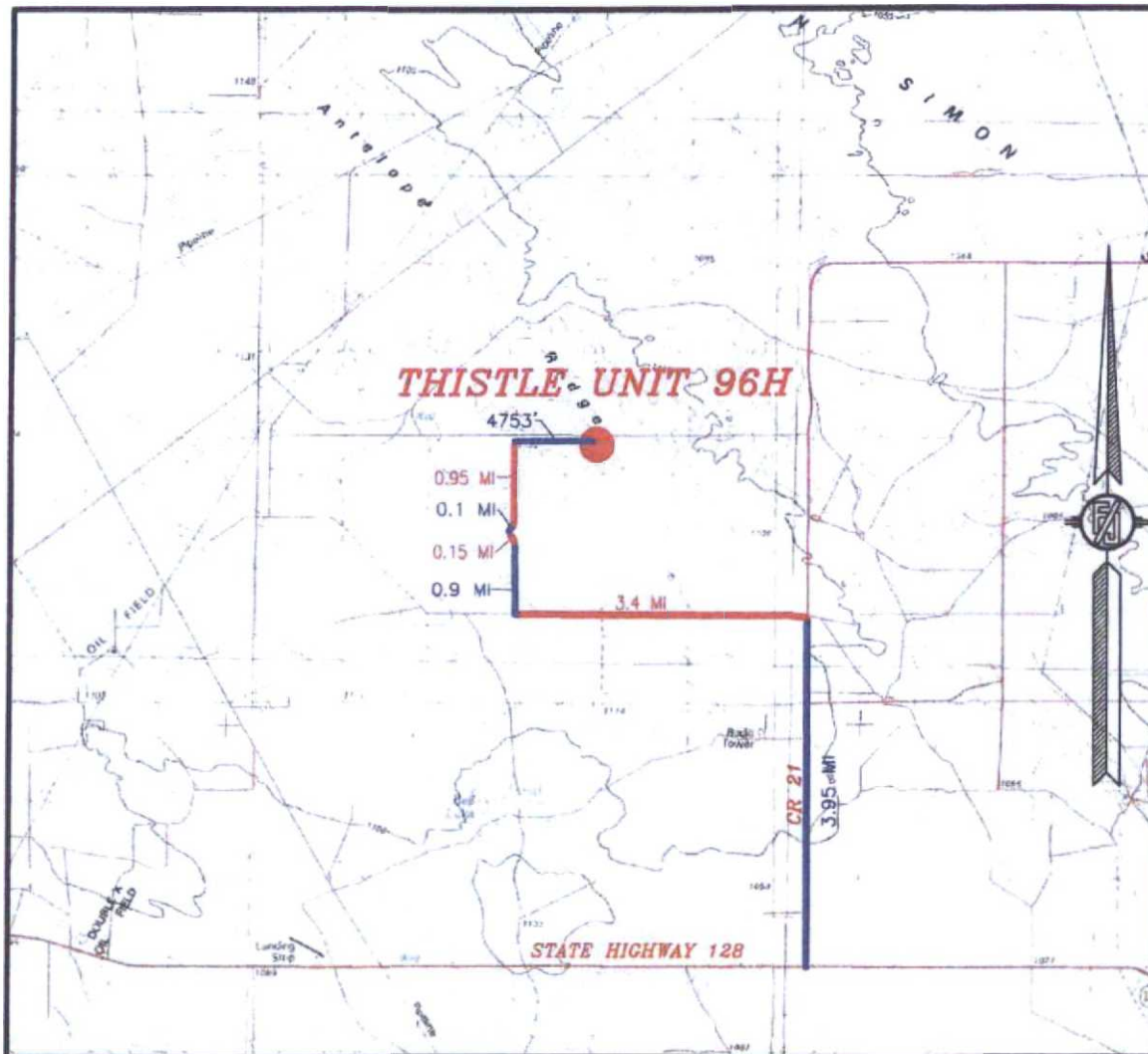
LOCATED 250 FT. FROM THE NORTH LINE
AND 300 FT. FROM THE EAST LINE OF
SECTION 22, TOWNSHIP 23 SOUTH,
RANGE 33 EAST, N.M.P.M.
LEA COUNTY, STATE OF NEW MEXICO

DECEMBER 16, 2015

MADRON SURVEYING, INC. 301 SOUTH CANAL (575) 234-3341 CARLSBAD, NEW MEXICO

SURVEY NO. 3808E

SECTION 22, TOWNSHIP 23 SOUTH, RANGE 33 EAST, N.M.P.M.
LEA COUNTY, STATE OF NEW MEXICO
VICINITY MAP



DISTANCES IN MILES

NOT TO SCALE

DEVON ENERGY PRODUCTION COMPANY, L.P.

THISTLE UNIT 96H

LOCATED 250 FT. FROM THE NORTH LINE
AND 300 FT. FROM THE EAST LINE OF
SECTION 22, TOWNSHIP 23 SOUTH,
RANGE 33 EAST, N.M.P.M.
LEA COUNTY, STATE OF NEW MEXICO

DECEMBER 16, 2015

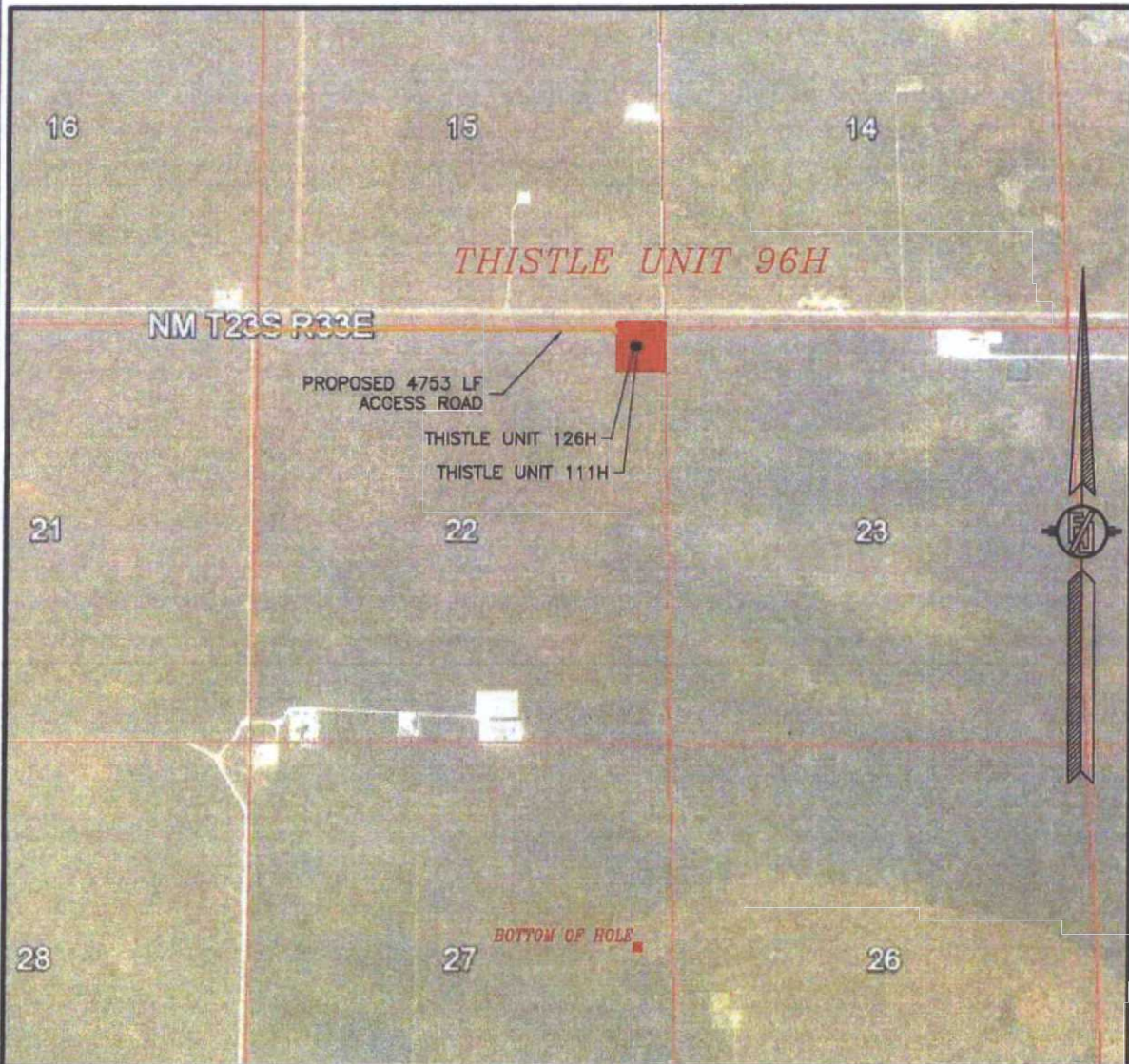
DIRECTIONS TO LOCATION

FROM STATE HIGHWAY 128 AND CR 21 (DELAWARE BASIN) GO NORTH
ON CR 21 3.95 MILES, TURN LEFT ON PAVED ROAD (XL ROAD) AND
GO WEST 3.4 MILES, TURN RIGHT ON CALICHE ROAD AND GO NORTH
0.9 MILE, BEND LEFT AND NORTHWEST 0.15 MILE, BEND RIGHT AND
GO NORTHEAST 0.1 MILE, BEND LEFT GO NORTH 0.95 MILE ON RIGHT
SIDE BEGIN PROPOSED ROAD, FOLLOW EAST 4753' TO NORTHWEST
PAD CORNER.

SURVEY NO. 3808E

MADRON SURVEYING, INC. 301 SOUTH CAHAL (575) 234-3341 CARLSBAD, NEW MEXICO

SECTION 22, TOWNSHIP 23 SOUTH, RANGE 33 EAST, N.M.P.M.
LEA COUNTY, STATE OF NEW MEXICO
AERIAL PHOTO



NOT TO SCALE
AERIAL PHOTO:
GOOGLE EARTH
FEBRUARY 2014

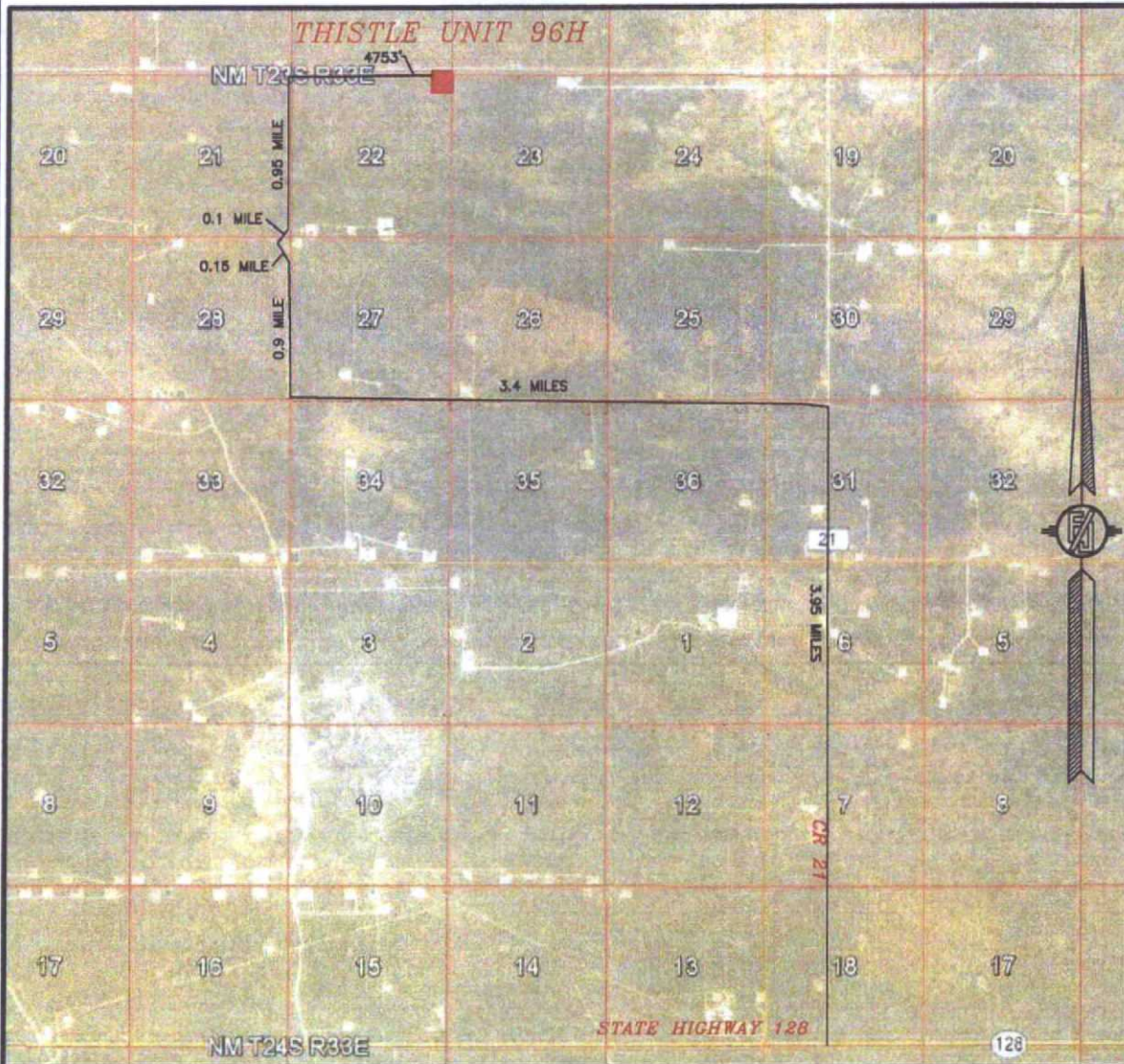
DEVON ENERGY PRODUCTION COMPANY, L.P.
THISTLE UNIT 96H
LOCATED 250 FT. FROM THE NORTH LINE
AND 300 FT. FROM THE EAST LINE OF
SECTION 22, TOWNSHIP 23 SOUTH,
RANGE 33 EAST, N.M.P.M.
LEA COUNTY, STATE OF NEW MEXICO

DECEMBER 16, 2015

SURVEY NO. 3808E

MADRON SURVEYING, INC. 301 SOUTH CANAL (575) 234-3341 CARLSBAD, NEW MEXICO

SECTION 22, TOWNSHIP 23 SOUTH, RANGE 33 EAST, N.M.P.M.
LEA COUNTY, STATE OF NEW MEXICO
ACCESS AERIAL ROUTE MAP



NOT TO SCALE
AERIAL PHOTO:
GOOGLE EARTH
FEBRUARY 2014

DEVON ENERGY PRODUCTION COMPANY, L.P.
THISTLE UNIT 96H
LOCATED 250 FT. FROM THE NORTH LINE
AND 300 FT. FROM THE EAST LINE OF
SECTION 22, TOWNSHIP 23 SOUTH,
RANGE 33 EAST, N.M.P.M.
LEA COUNTY, STATE OF NEW MEXICO

DECEMBER 16, 2015

SURVEY NO. 3808E

MADRON SURVEYING, INC. 301 SOUTH CANAL (575) 234-3341 CARLSBAD, NEW MEXICO