

DISTRICT I
1625 N. French Dr., Hobbs, NM 88240
Phone: (575) 393-6161 Fax: (575) 393-0720
DISTRICT II
811 S. First St., Artesia, NM 88210
Phone: (575) 748-1283 Fax: (575) 748-9720
DISTRICT III
1000 Rio Brazos Road, Aztec, NM 87410
Phone: (505) 334-6178 Fax: (505) 334-6170
DISTRICT IV
1220 S. St. Francis Dr., Santa Fe, NM 87505
Phone: (505) 476-3460 Fax: (505) 476-3462

State of New Mexico
Energy, Minerals & Natural Resources Department
OIL CONSERVATION DIVISION
1220 South St. Francis Dr.
Santa Fe, New Mexico 87505

Form C-102
Revised August 1, 2011
Submit one copy to appropriate
District Office

☐ AMENDED REPORT

WELL LOCATION AND ACREAGE DEDICATION PLAT

API Number 30-025-42981	Pool Code 96101	Pool Name SWD; Devonian
Property Code 314743 314793	Property Name OWL LIMESTONE SWD	Well Number 2
OGRID No. 308339	Operator Name Owl SWD Operating, LLC OILFIELD WATER LOGISTICS	Elevation 3364'

Surface Location

UL or lot No. A	Section 12	Township 23-S	Range 34-E	Lot Idn	Feet from the 244	North/South line NORTH	Feet from the 626	East/West line EAST	County LEA
--------------------	---------------	------------------	---------------	---------	----------------------	---------------------------	----------------------	------------------------	---------------

Bottom Hole Location If Different From Surface

UL or lot No.	Section	Township	Range	Lot Idn	Feet from the	North/South line	Feet from the	East/West line	County
---------------	---------	----------	-------	---------	---------------	------------------	---------------	----------------	--------

Dedicated Acres	Joint or Infill	Consolidation Code	Order No.
-----------------	-----------------	--------------------	-----------

NO ALLOWABLE WILL BE ASSIGNED TO THIS COMPLETION UNTIL ALL INTERESTS HAVE BEEN CONSOLIDATED OR A NON-STANDARD UNIT HAS BEEN APPROVED BY THE DIVISION

GEODETIC COORDINATES NAD 27 NME SURFACE LOCATION Y=483373.6 N X=782982.3 E LAT.=32.325584° N LONG.=103.417236° W	GEODETIC COORDINATES NAD 83 NME SURFACE LOCATION Y=483433.6 N X=824166.3 E LAT.=32.325709° N LONG.=103.417712° W	

OPERATOR CERTIFICATION

I hereby certify that the information herein is true and complete to the best of my knowledge and belief, and that this organization either owns a working interest or unleased mineral interest in the land including the proposed bottom hole location or has a right to drill this well at this location pursuant to a contract with an owner of such mineral or working interest, or to a voluntary pooling agreement or a compulsory pooling order heretofore entered by the division.

Signature
10/07/2015
Date

Ben Stone
Printed Name

ben@sosconsulting.us
E-mail Address

SURVEYOR CERTIFICATION

I hereby certify that the well location shown on this plat was plotted from field notes of actual surveys made by me or under my supervision, and that the same is true and correct to the best of my belief.

SEPTEMBER 25, 2015

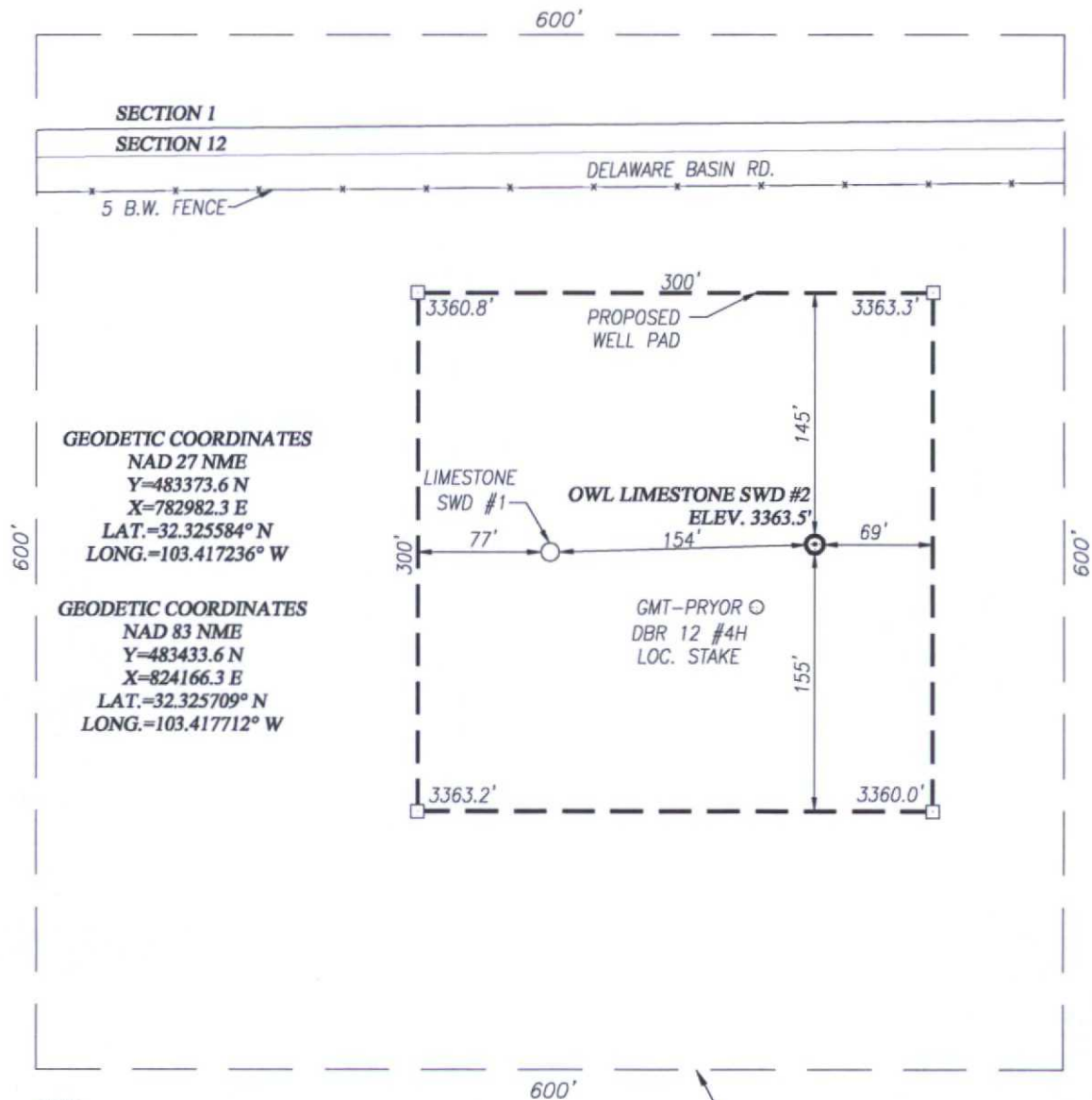
Date of Survey
Signature & Seal of Professional Surveyor:

Certificate Number
Gary G. Eidson 12641
Ronald J. Eidson 3239

ACK JWSC W.O. 15.11 0902

DEC 21 2015

WELL SITE PLAN

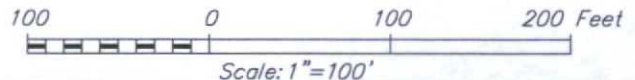


NOTE:
SEE "TOPOGRAPHICAL AND ACCESS ROAD MAP"
FOR PROPOSED ROAD LOCATION.

SURVEY BOUNDARY

DIRECTIONS TO OWL LIMESTONE SWD #2:

FROM THE INTERSECTION OF DELAWARE BASIN RD. AND
CO. RD. E-21 (ADOBE RD.), GO EAST ON DELAWARE BASIN
FOR APPROX. 2.35 MILES. THE LOCATION IS SOUTH OF
R.O.W. FENCE 207 FEET.



OILFIELD WATER LOGISTICS

OWL LIMESTONE SWD #2 WELL LOCATED 244 FEET FROM
THE NORTH LINE AND 626 FEET FROM THE EAST LINE OF
SECTION 12, TOWNSHIP 23 SOUTH, RANGE 34 EAST, N.M.P.M.,
LEA COUNTY, NEW MEXICO



PROVIDING SURVEYING SERVICES
SINCE 1946
JOHN WEST SURVEYING COMPANY
412 N. DAL PASO HOBBS, N.M. 88240
(575) 393-3117 www.jwsc.biz
TBPLS# 10021000

Survey Date: 9/25/15

CAD Date: 9/28/15

Drawn By: ACK

W.O. No.: 15110902

Rev: .

Rel. W.O.:

Sheet 1 of 1

VICINITY MAP



SCALE: 1" = 2 MILES

DRIVING ROUTE: SEE TOPOGRAPHICAL AND ACCESS ROAD MAP

SEC. 12 TWP. 23-S RGE. 34-E

SURVEY N.M.P.M.

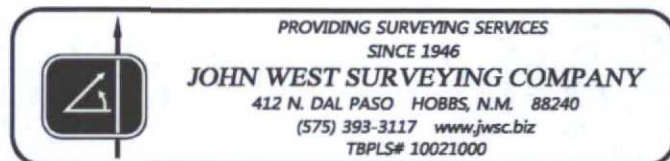
COUNTY LEA STATE NEW MEXICO

DESCRIPTION 244' FNL & 626' FEL

ELEVATION 3364'

OPERATOR OILFIELD WATER LOGISTICS

LEASE OWL LIMESTONE SWD



PROVIDING SURVEYING SERVICES
SINCE 1946

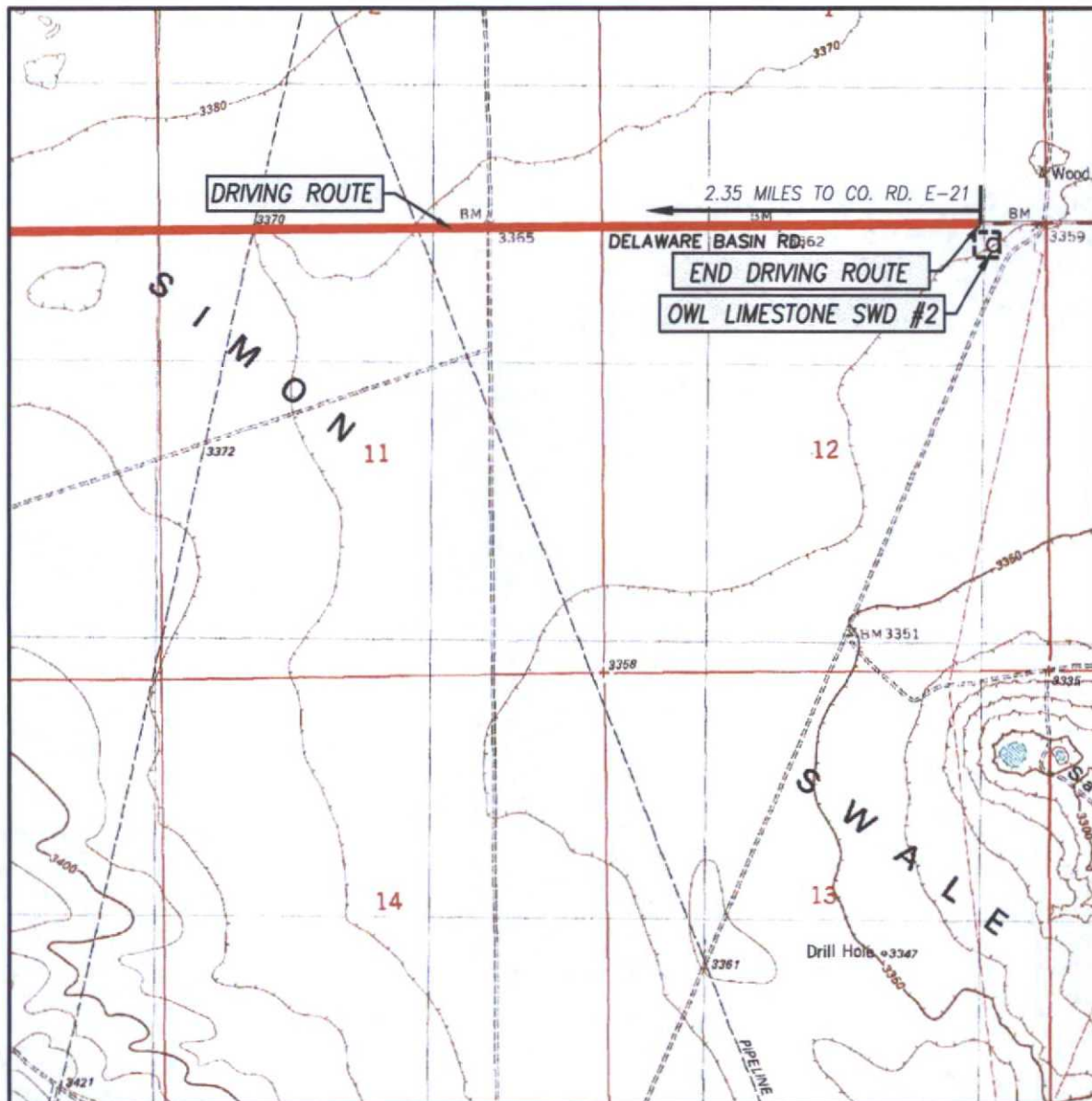
JOHN WEST SURVEYING COMPANY

412 N. DAL PASO HOBBS, N.M. 88240

(575) 393-3117 www.jwsc.biz

TBPLS# 10021000

TOPOGRAPHIC AND ACCESS ROAD MAP



SCALE: 1" = 2000'

CONTOUR INTERVAL:
SAN SIMON SINK, N.M. - 10'

SEC. 12 TWP. 23-S RGE. 34-E

SURVEY N.M.P.M.

COUNTY LEA STATE NEW MEXICO

DESCRIPTION 244' FNL & 626' FEL

ELEVATION 3364'

OPERATOR OILFIELD WATER LOGISTICS

LEASE OWL LIMESTONE SWD

U.S.G.S. TOPOGRAPHIC MAP

SAN SIMON SINK, N.M.

DIRECTIONS TO OWL LIMESTONE SWD #2:

FROM THE INTERSECTION OF DELAWARE BASIN RD. AND
CO. RD. E-21 (ADOBE RD.), GO EAST ON DELAWARE BASIN
FOR APPROX. 2.35 MILES. THE LOCATION IS SOUTH OF R.O.W.
FENCE 207 FEET.



PROVIDING SURVEYING SERVICES
SINCE 1946

JOHN WEST SURVEYING COMPANY

412 N. DAL PASO HOBBS, N.M. 88240
(575) 393-3117 www.jwsc.biz
TBPLS# 10021000

