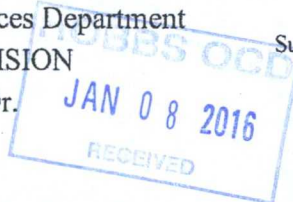


District I
1625 N. French Dr., Hobbs, NM 88240
Phone: (575) 393-6161 Fax: (575) 393-0720
District II
811 S. First St., Artesia, NM 88210
Phone: (575) 748-1283 Fax: (575) 748-9720
District III
1000 Rio Brazos Road, Aztec, NM 87410
Phone: (505) 334-6178 Fax: (505) 334-6170
District IV
1220 S. St. Francis Dr., Santa Fe, NM 87505
Phone: (505) 476-3460 Fax: (505) 476-3462

State of New Mexico
Energy, Minerals & Natural Resources Department
OIL CONSERVATION DIVISION
1220 South St. Francis Dr.
Santa Fe, NM 87505

Form C-102
Revised August 1, 2011
Submit one copy to appropriate
District Office
☐ AMENDED REPORT



WELL LOCATION AND ACREAGE DEDICATION PLAT

¹ API Number 30-029-43013		² Pool Code 2209	³ Pool Name ANTELOPE RIDGE; BONE SPRING WEST
⁴ Property Code 040167	⁵ Property Name TELECASTER 30 FEDERAL		⁶ Well Number 1H
⁷ OGRID No. 270329	⁸ Operator Name ENDURANCE RESOURCES, LLC		⁹ Elevation 3617.3

¹⁰ Surface Location

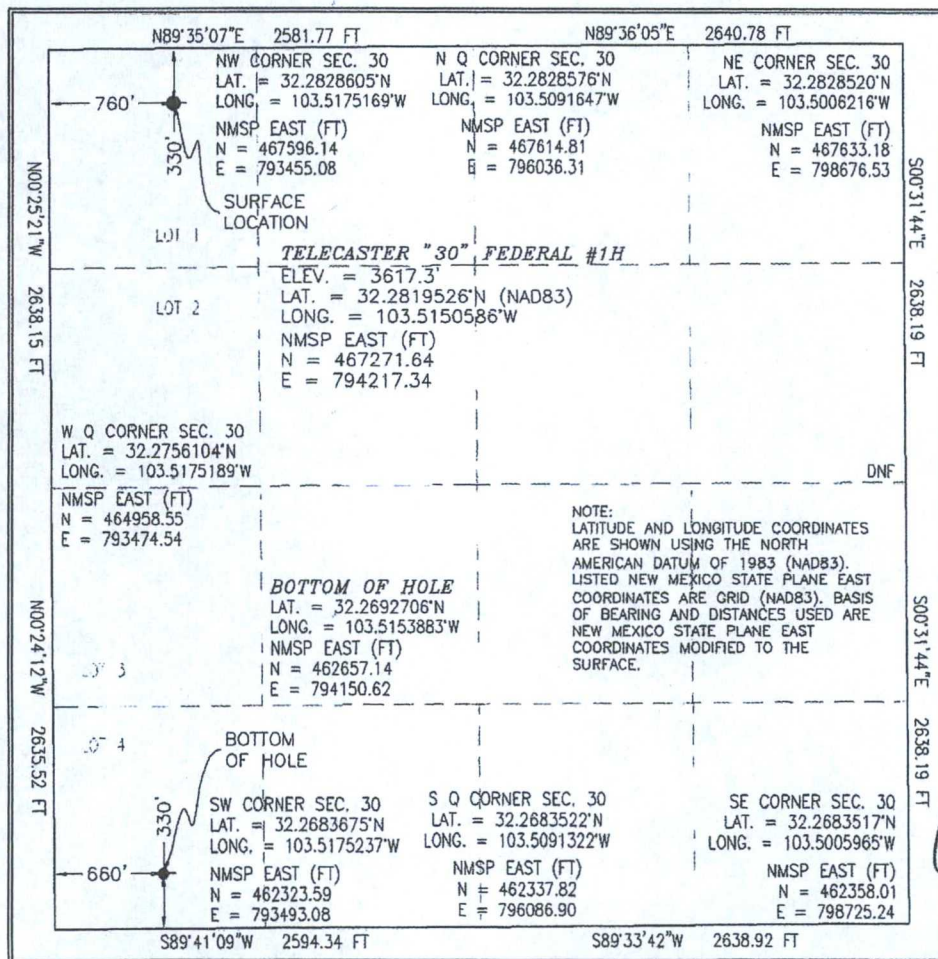
UL or lot no.	Section	Township	Range	Lot Idn	Feet from the	North/South line	Feet from the	East/West line	County
D	30	23 S	34 E	1	330	NORTH	760	WEST	LEA

¹¹ Bottom Hole Location If Different From Surface

UL or lot no.	Section	Township	Range	Lot Idn	Feet from the	North/South line	Feet from the	East/West line	County
M	30	23 S	34 E	4	330	SOUTH	660	WEST	LEA

¹² Dedicated Acres 153.72	¹³ Joint or Infill	¹⁴ Consolidation Code	¹⁵ Order No.
--	-------------------------------	----------------------------------	-------------------------

No allowable will be assigned to this completion until all interests have been consolidated or a non-standard unit has been approved by the division.



¹⁷ OPERATOR CERTIFICATION

I hereby certify that the information contained herein is true and complete to the best of my knowledge and belief, and that this organization either owns a working interest or unleased mineral interest in the land including the proposed bottom hole location or has a right to drill this well at this location pursuant to a contract with an owner of such a mineral or working interest or to a voluntary pooling agreement or a compulsory pooling order heretofore entered by the division.

M. A. Sirgo, III 7-9-14
Signature Date

M. A. Sirgo, III
Printed Name

manny@enduranceresourcesllc.com
E-mail Address

manny@enduranceresourcesllc.com
E-mail Address

¹⁸ SURVEYOR CERTIFICATION

I hereby certify that the well location shown on this plat was plotted from field notes of actual surveys made by me or under my supervision, and that the same is true and correct to the best of my belief.

JUNE 19, 2013
Date of Survey

12/97
Signature and Seal of Professional Surveyor

FRANCISCO RAMILLO, PLS 12797
Certificate Number

SURVEY NO. 1916

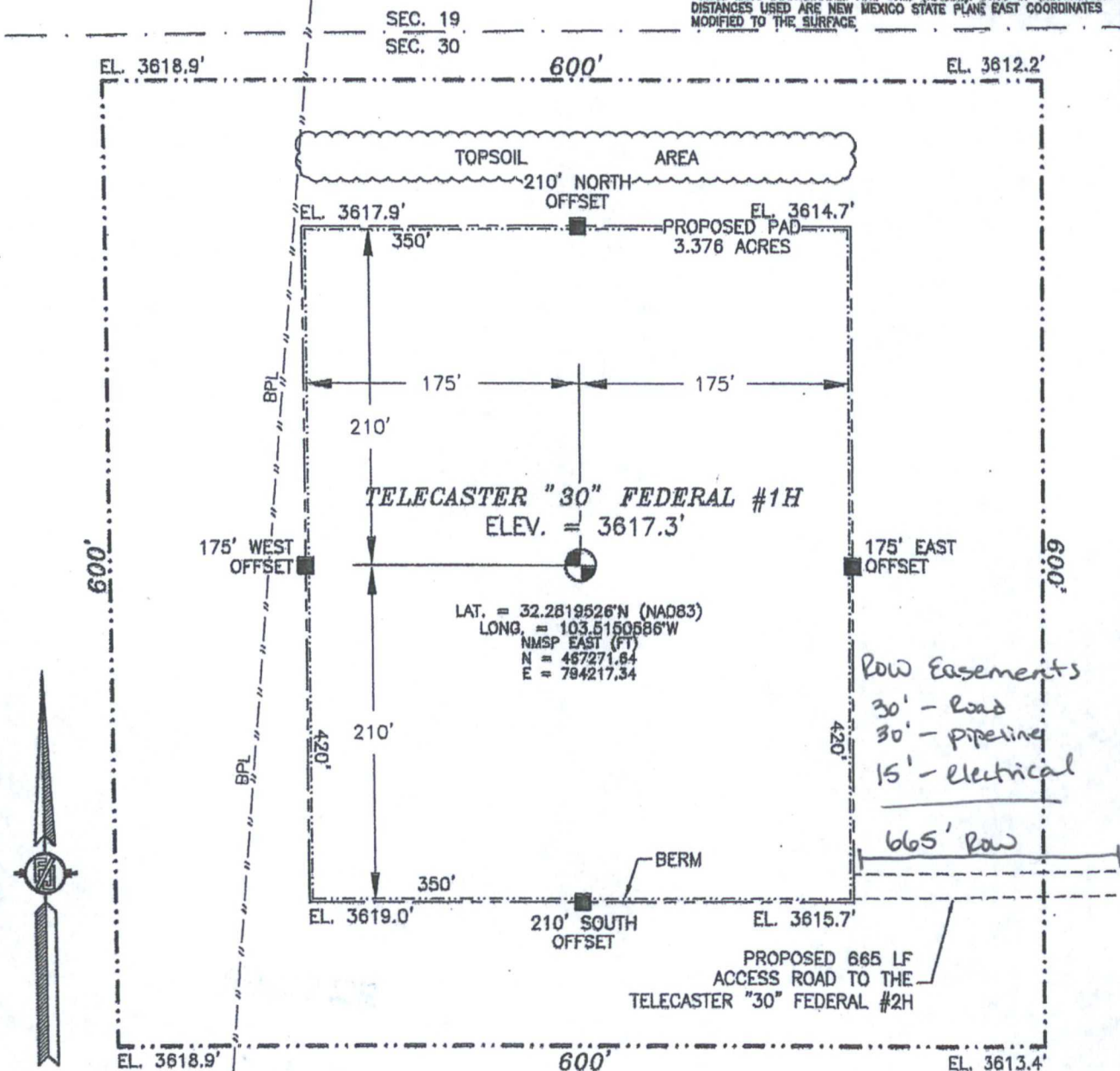
JAN 14 2016

JAN 12 2016

SECTION 30, TOWNSHIP 23 SOUTH, RANGE 34 EAST, N.M.P.M.
LEA COUNTY, STATE OF NEW MEXICO

SITE MAP

NOTE: LATITUDE AND LONGITUDE COORDINATES ARE SHOWN USING THE NORTH AMERICAN DATUM OF 1983 (NAD83). LISTED NEW MEXICO STATE PLANE EAST COORDINATES ARE GRID (NAD83). BASIS OF BEARING AND DISTANCES USED ARE NEW MEXICO STATE PLANE EAST COORDINATES MODIFIED TO THE SURFACE.



Row Easements
30' - Road
30' - Pipelining
15' - Electrical
665' Row



010 50 100 200

SCALE 1" = 100'

DIRECTIONS TO LOCATION

FROM THE INTERSECTION OF STATE HIGHWAY 128 AND CR 21
(DELAWARE BASIN) GO NORTH ON CR 21 FOR APPROX. 5.0 MILES.
LOCATION IS APPROX. 1300' WEST.

ENDURANCE RESOURCES, LLC
TELECASTER "30" FEDERAL #1H
LOCATED 330 FT. FROM THE NORTH LINE
AND 760 FT. FROM THE WEST LINE OF
SECTION 30, TOWNSHIP 23 SOUTH,
RANGE 34 EAST, N.M.P.M.
LEA COUNTY, STATE OF NEW MEXICO

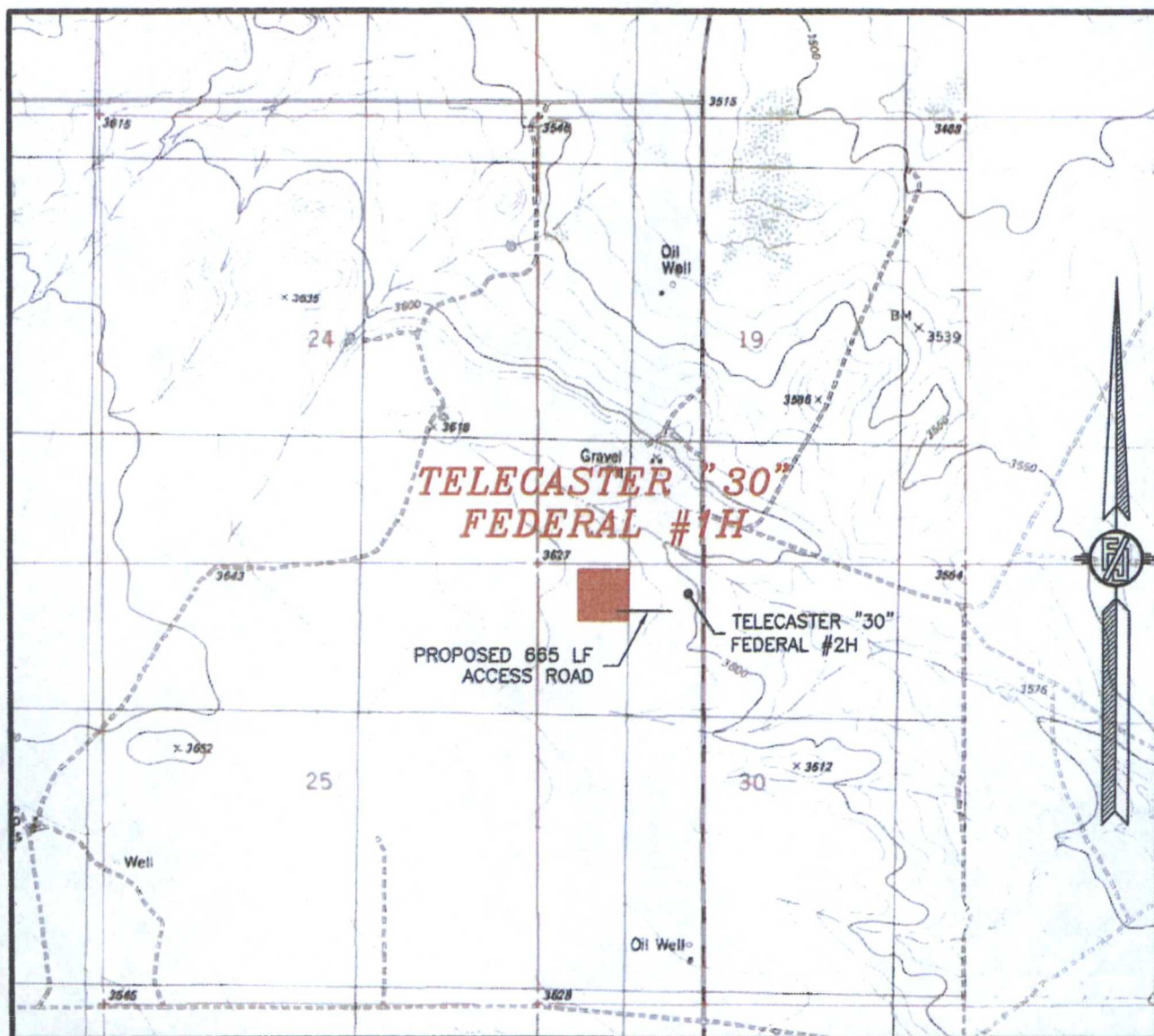
JUNE 19, 2013

SURVEY NO. 1916

MADRON SURVEYING, INC. 301 SOUTH CANAL
(575) 234-3341

CARLSBAD, NEW MEXICO

SECTION 30, TOWNSHIP 23 SOUTH, RANGE 34 EAST, N.M.P.M.
LEA COUNTY, STATE OF NEW MEXICO
LOCATION VERIFICATION MAP



USGS QUAD MAP:
TIP TOP WELLS

NOT TO SCALE

ENDURANCE RESOURCES, LLC
TELECASTER "30" FEDERAL #1H
LOCATED 330 FT. FROM THE NORTH LINE
AND 760 FT. FROM THE WEST LINE OF
SECTION 30, TOWNSHIP 23 SOUTH,
RANGE 34 EAST, N.M.P.M.
LEA COUNTY, STATE OF NEW MEXICO

JUNE 19, 2013

MADRON SURVEYING, INC. 301 SOUTH CANAL
(575) 234-3341

SURVEY NO. 1916
CARLSBAD, NEW MEXICO

SECTION 30, TOWNSHIP 23 SOUTH, RANGE 34 EAST, N.M.P.M.
LEA COUNTY, STATE OF NEW MEXICO
VICINITY MAP



ENDURANCE RESOURCES, LLC
TELECASTER "30" FEDERAL #1H
LOCATED 330 FT. FROM THE NORTH LINE
AND 760 FT. FROM THE WEST LINE OF
SECTION 30, TOWNSHIP 23 SOUTH,
RANGE 34 EAST, N.M.P.M.
LEA COUNTY, STATE OF NEW MEXICO

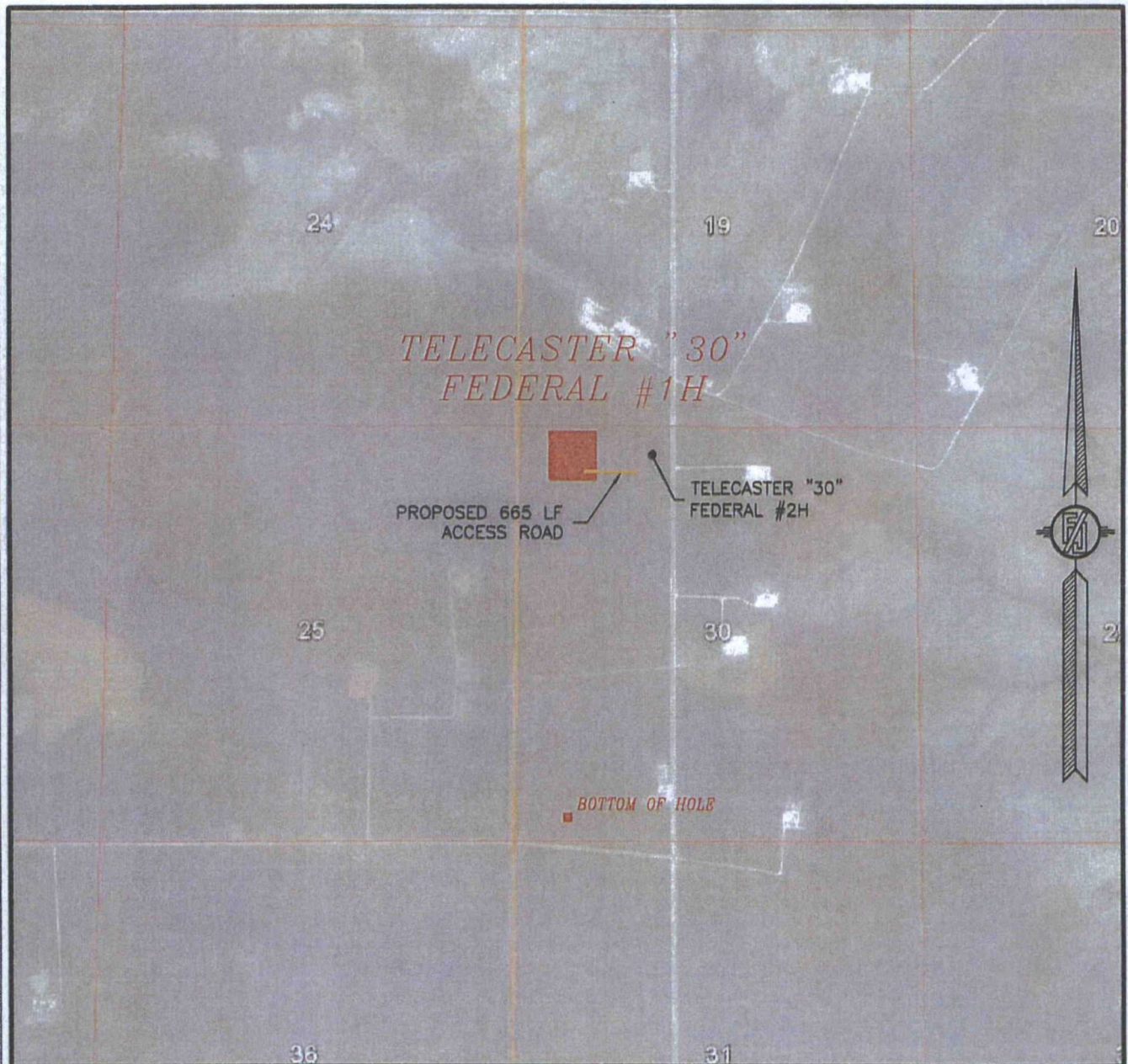
DIRECTIONS TO LOCATION
FROM THE INTERSECTION OF STATE HIGHWAY 128 AND CR 21
(DELAWARE BASIN) GO NORTH ON CR 21 FOR APPROX. 5.0 MILES.
LOCATION IS APPROX. 1300' WEST.

JUNE 19, 2013

MADRON SURVEYING, INC. 301 SOUTH CANAL
(575) 234-3341

SURVEY NO. 1916
CARLSBAD, NEW MEXICO

SECTION 30, TOWNSHIP 23 SOUTH, RANGE 34 EAST, N.M.P.M.
LEA COUNTY, STATE OF NEW MEXICO
AERIAL PHOTO



NOT TO SCALE
AERIAL PHOTO:
GOOGLE EARTH
MARCH 2012

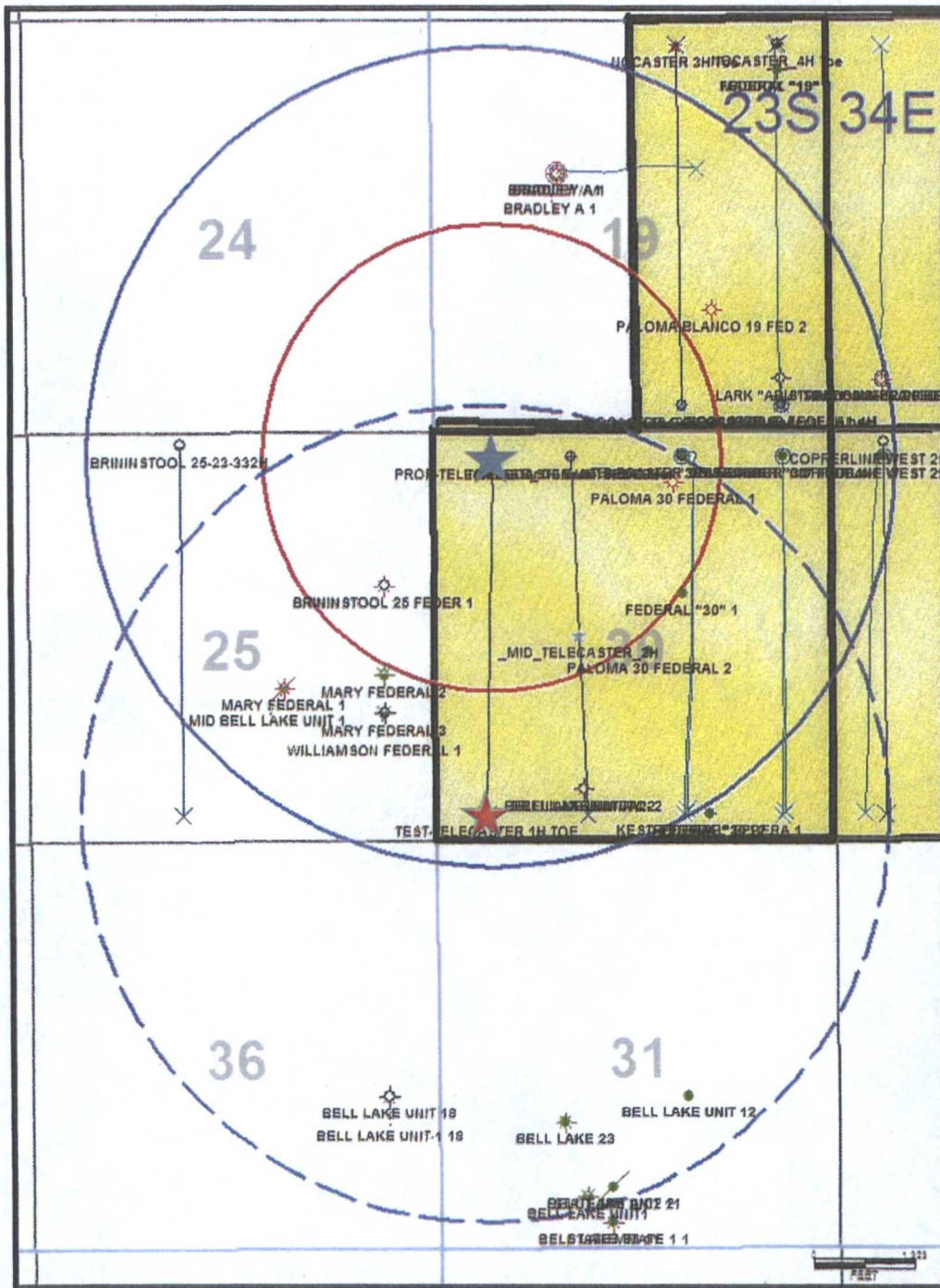
ENDURANCE RESOURCES, LLC
TELECASTER "30" FEDERAL #1H
LOCATED 330 FT. FROM THE NORTH LINE
AND 760 FT. FROM THE WEST LINE OF
SECTION 30, TOWNSHIP 23 SOUTH,
RANGE 34 EAST, N.M.P.M.
LEA COUNTY, STATE OF NEW MEXICO

JUNE 19, 2013

SURVEY NO. 1916

MADRON SURVEYING, INC. 301 SOUTH CANAL (575) 234-3341 CARLSBAD, NEW MEXICO

Telecaster 30 Federal -1H



-  Surface Location
-  Bottom Hole Location
-  Surface 5280' Radius
-  Bottom Hole 5280' Radius
-  H2S 3000' Radius