

District I
1625 N. French Dr., Hobbs, NM 88240
Phone: (575) 393-6161 Fax: (575) 393-0720
District II
311 S. First St., Artesia, NM 88210
Phone: (575) 748-1283 Fax: (575) 748-0720
District III
1000 Rio Brazos Road, Aztec, NM 87410
Phone: (505) 334-6178 Fax: (505) 334-6170
District IV
1220 S. St. Francis Dr., Santa Fe, NM 87505
Phone: (505) 476-3460 Fax: (505) 476-3462

State of New Mexico
Energy, Minerals & Natural Resources Department
OIL CONSERVATION DIVISION
1220 South St. Francis Dr.
Santa Fe, NM 87505

HOBBS OCD

JAN 14 2016

Form C-102
Revised August 1, 2011
Submit one copy to appropriate
District Office

☒ AMENDED REPORT

WELL LOCATION AND ACREAGE DEDICATION PLAT

¹ API Number 30-025-42217	² Pool Code 97899	³ Pool Name WC-025 G-06 S253206M; Bone Spring
⁴ Property Code 313839	⁵ Property Name CHINCOTEAGUE 32 STATE COM	⁶ Well Number 4H
⁷ OGRID No. 6137	⁸ Operator Name DEVON ENERGY PRODUCTION COMPANY, L.P.	⁹ Elevation 3470.9

¹⁰ Surface Location

UL or lot no.	Section	Township	Range	Lot Idn	Feet from the	North/South line	Feet from the	East/West line	County
O	32	24 S	32 E		200	SOUTH	2600	EAST	LEA

¹¹ Bottom Hole Location If Different From Surface

UL or lot no.	Section	Township	Range	Lot Idn	Feet from the	North/South line	Feet from the	East/West line	County
B	32	24 S	32 E		330	NORTH	2410	EAST	LEA

¹² Dedicated Acres 160.00	¹³ Joint or Infill	¹⁴ Consolidation Code	¹⁵ Order No.
---	-------------------------------	----------------------------------	-------------------------

HOBBS OCD

JAN 14 2016

No allowable will be assigned to this completion until all interests have been consolidated or a non-standard unit has been approved by the division.

RECEIVED

<p>N86°21'27"E 2641.48 FT</p> <p>NW CORNER SEC. 32 LAT. = 32.1811326°N LONG. = 103.7052240°W</p> <p>NMSP EAST (FT) N = 430198.05 E = 735661.86</p>		<p>N89°21'41"E 2641.64 FT</p> <p>N Q CORNER SEC. 32 LAT. = 32.1811714°N LONG. = 103.6966883°W</p> <p>NMSP EAST (FT) N = 430227.67 E = 738302.60</p>		<p>NE CORNER SEC. 32 LAT. = 32.1812090°N LONG. = 103.6881520°W</p> <p>NMSP EAST (FT) N = 430257.10 E = 740943.50</p>	
<p>NOTE: LATITUDE AND LONGITUDE COORDINATES ARE SHOWN USING THE NORTH AMERICAN DATUM OF 1983 (NAD83). LISTED NEW MEXICO STATE PLANE EAST COORDINATES ARE GRID (NAD83), BASIS OF BEARING AND DISTANCES USED ARE NEW MEXICO STATE PLANE EAST COORDINATES MODIFIED TO THE SURFACE.</p>		<p>BOTTOM OF HOLE LAT. = 32.1802678°N LONG. = 103.6959381°W</p> <p>NMSP EAST (FT) N = 429940.32 E = 738536.64</p>		<p>SE CORNER SEC. 32 LAT. = 32.1739477°N LONG. = 103.6881392°W</p> <p>NMSP EAST (FT) N = 427615.56 E = 740963.30</p>	
<p>W Q CORNER SEC. 32 LAT. = 32.1738796°N LONG. = 103.7052028°W</p> <p>NMSP EAST (FT) N = 427559.54 E = 735683.83</p>		<p>CHINCOTEAGUE "32" STATE COM 4H ELEV. = 3470.9' LAT. = 32.1672052°N (NAD83) LONG. = 103.6965249°W</p> <p>NMSP EAST (FT) N = 425147.25 E = 738383.22</p>		<p>NE CORNER SEC. 5 LAT. = 32.1668813°N LONG. = 103.6886454°W</p> <p>NMSP EAST (FT) N = 424871.16 E = 740822.53</p>	
<p>SW CORNER SEC. 32 LAT. = 32.1666258°N LONG. = 103.7051850°W</p> <p>NMSP EAST (FT) N = 424920.70 E = 735704.73</p>		<p>S Q CORNER SEC. 32 LAT. = 32.1666550°N LONG. = 103.6966583°W</p> <p>NMSP EAST (FT) N = 424946.83 E = 738343.11</p>		<p>SE CORNER SEC. 32 LAT. = 32.1666862°N LONG. = 103.6881230°W</p> <p>NMSP EAST (FT) N = 424973.91 E = 740984.15</p>	
<p>S89°22'46"W 2459.46 FT</p> <p>N89°50'28"W 179.64 FT</p>		<p>S89°26'16"W 2480.08 FT</p> <p>S89°01'32"W 161.68 FT</p>		<p>S00°25'46"E 2642.20 FT</p> <p>S00°27'08"E 2642.30 FT</p>	

"OPERATOR CERTIFICATION"

I hereby certify that the information contained herein is true and complete to the best of my knowledge and belief, and that this organization either owns a working interest or undivided mineral interest in the land including the proposed bottom hole location or has a right to drill this well at this location pursuant to a contract with an owner of such a mineral or working interest, or to a voluntary pooling agreement or a compulsory pooling order heretofore entered by the division.

Linda Good 1/14/2016
Signature Date

Linda Good
Printed Name

linda.good@dvn.com
E-mail Address

"SURVEYOR CERTIFICATION"

I hereby certify that the well location shown on this plat was plotted from field notes of actual surveys made by me or under my supervision, and that the same is true and correct to the best of my belief.

DECEMBER 31, 2015
Date of Survey

William F. Jaramillo
Signature

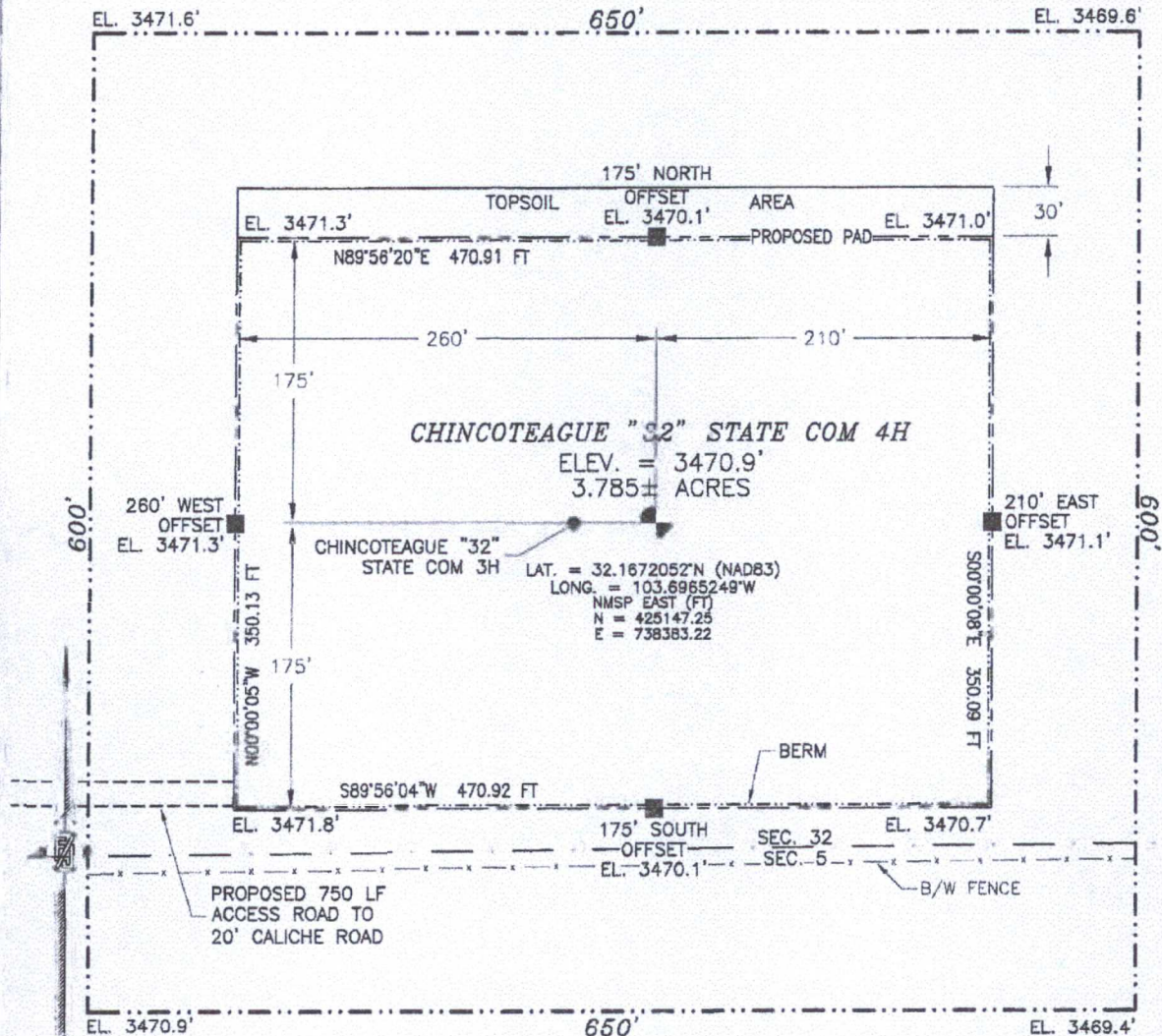
Certification Number 12797
Survey No. 3346A

AMENDED C-102

JAN 14 2016

SECTION 32, TOWNSHIP 24 SOUTH, RANGE 32 EAST, N.M.P.M.
LEA COUNTY, STATE OF NEW MEXICO
SITE MAP

NOTE: LATITUDE AND LONGITUDE COORDINATES ARE SHOWN USING THE NORTH AMERICAN DATUM OF 1983 (NAD83). LISTED NEW MEXICO STATE PLANE EAST COORDINATES ARE GRID (NAD83). BASIS OF BEARING AND DISTANCES USED ARE NEW MEXICO STATE PLANE EAST COORDINATES MODIFIED TO THE SURFACE



0 10 50 100 200

SCALE 1" = 100'
DIRECTIONS TO LOCATION

FROM STATE HIGHWAY 128 AND CR 1 (ORLA ROAD) GO SOUTH ON CR 1 2.4 MILES, TURN RIGHT ON CALICHE ROAD AND GO WEST 1.0 MILES, TURN LEFT AND GO SOUTH 0.5 MILES, BEND RIGHT AND GO WEST 0.1 MILES, BEND LEFT AND GO SOUTHWEST 470', BEND RIGHT AND GO WEST 0.36 MILES, TURN LEFT AND GO SOUTH-SOUTHWEST 0.43 MILES TO A PROPOSED ROAD SURVEY AND FOLLOW FLAGS EAST 750' TO THE PROPOSED SOUTHWEST PAD CORNER FOR THIS LOCATION.

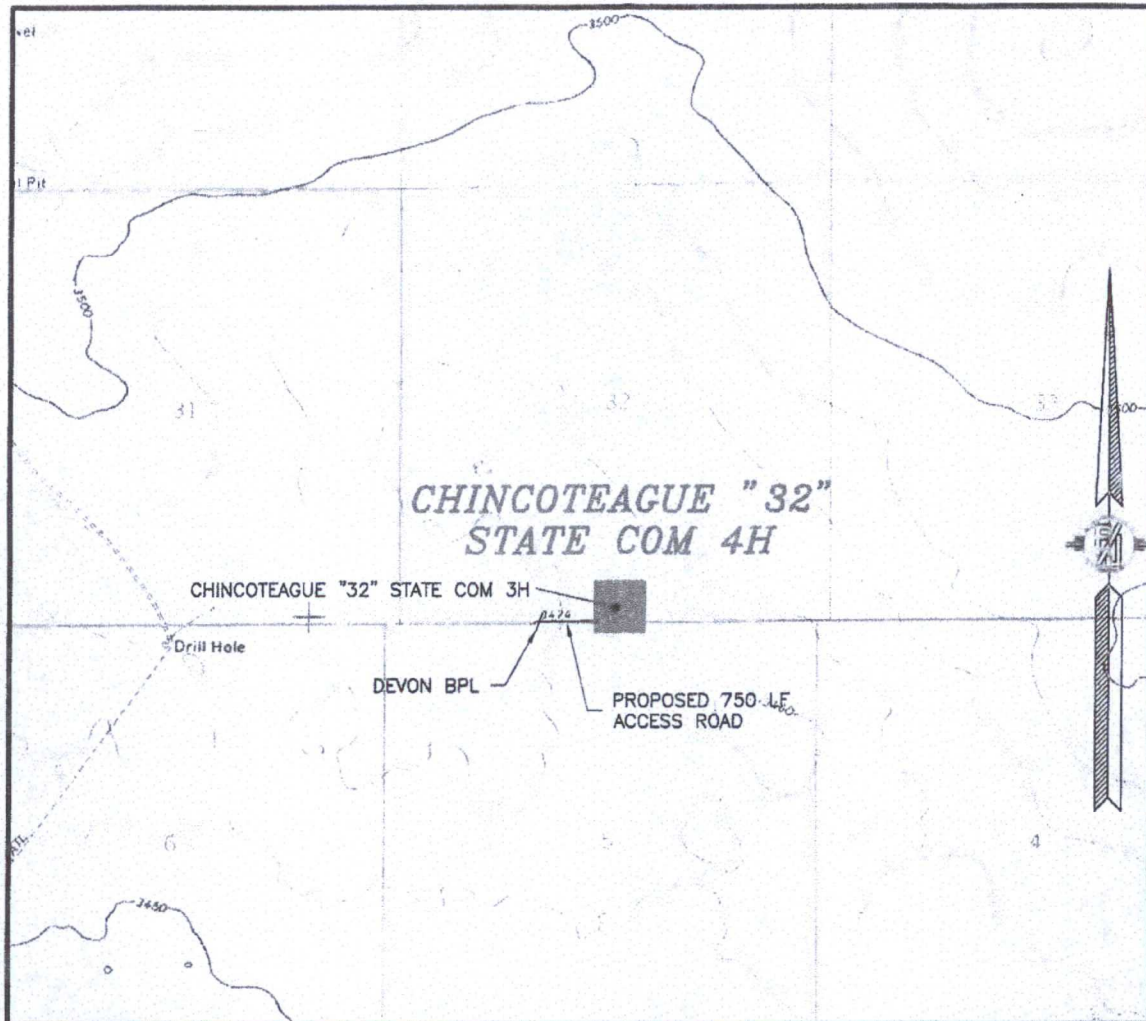
DEVON ENERGY PRODUCTION COMPANY, L.P.
CHINCOTEAGUE "32" STATE COM 4H
LOCATED 200 FT. FROM THE SOUTH LINE
AND 2600 FT. FROM THE EAST LINE OF
SECTION 32, TOWNSHIP 24 SOUTH,
RANGE 32 EAST, N.M.P.M.
LEA COUNTY, STATE OF NEW MEXICO

DECEMBER 21, 2015

SURVEY NO. 3346A

MADRON SURVEYING, INC. 301 SOUTH CANAL (575) 234-3341 CARLSBAD, NEW MEXICO

SECTION 32, TOWNSHIP 24 SOUTH, RANGE 32 EAST, N.M.P.M.
LEA COUNTY, STATE OF NEW MEXICO
LOCATION VERIFICATION MAP



USGS QUAD MAP:
PADUCA BREAKS NW

NOT TO SCALE

DEVON ENERGY PRODUCTION COMPANY, L.P.
CHINCOTEAGUE "32" STATE COM 4H
LOCATED 200 FT. FROM THE SOUTH LINE
AND 2600 FT. FROM THE EAST LINE OF
SECTION 32, TOWNSHIP 24 SOUTH,
RANGE 32 EAST, N.M.P.M.
LEA COUNTY, STATE OF NEW MEXICO

DECEMBER 21, 2015

SURVEY NO. 3346A

MADRON SURVEYING, INC. 301 SOUTH CANAL (575) 234-3341 CARLSBAD, NEW MEXICO

NOT TO SCALE

CHINCOTEAGUE "32" STATE COM 4H

ND 2600 FT. FROM THE EAST LINE OF

RANGE 32 EAST, N.M.P.M.

DIRECTIONS TO LOCATION

FROM STATE HIGHWAY 128 AND CR 1 (ORLA ROAD) GO SOUTH ON CR 1 .5 MILES, TURN RIGHT ON CALICHE ROAD AND GO WEST 1.0 MILES, TURN LEFT AND GO SOUTH 0.5 MILES, BEND RIGHT AND GO WEST 0.1 MILES, BEND LEFT AND GO SOUTHWEST 470', BEND RIGHT AND GO WEST 0.36 MILES, TURN LEFT AND GO SOUTH-SOUTHWEST 0.43 MILES TO A PROPOSED ROAD SURVEY AND FOLLOW FLAGS EAST 750' TO THE PROPOSED SOUTHWEST PAD CORNER FOR THIS LOCATION.

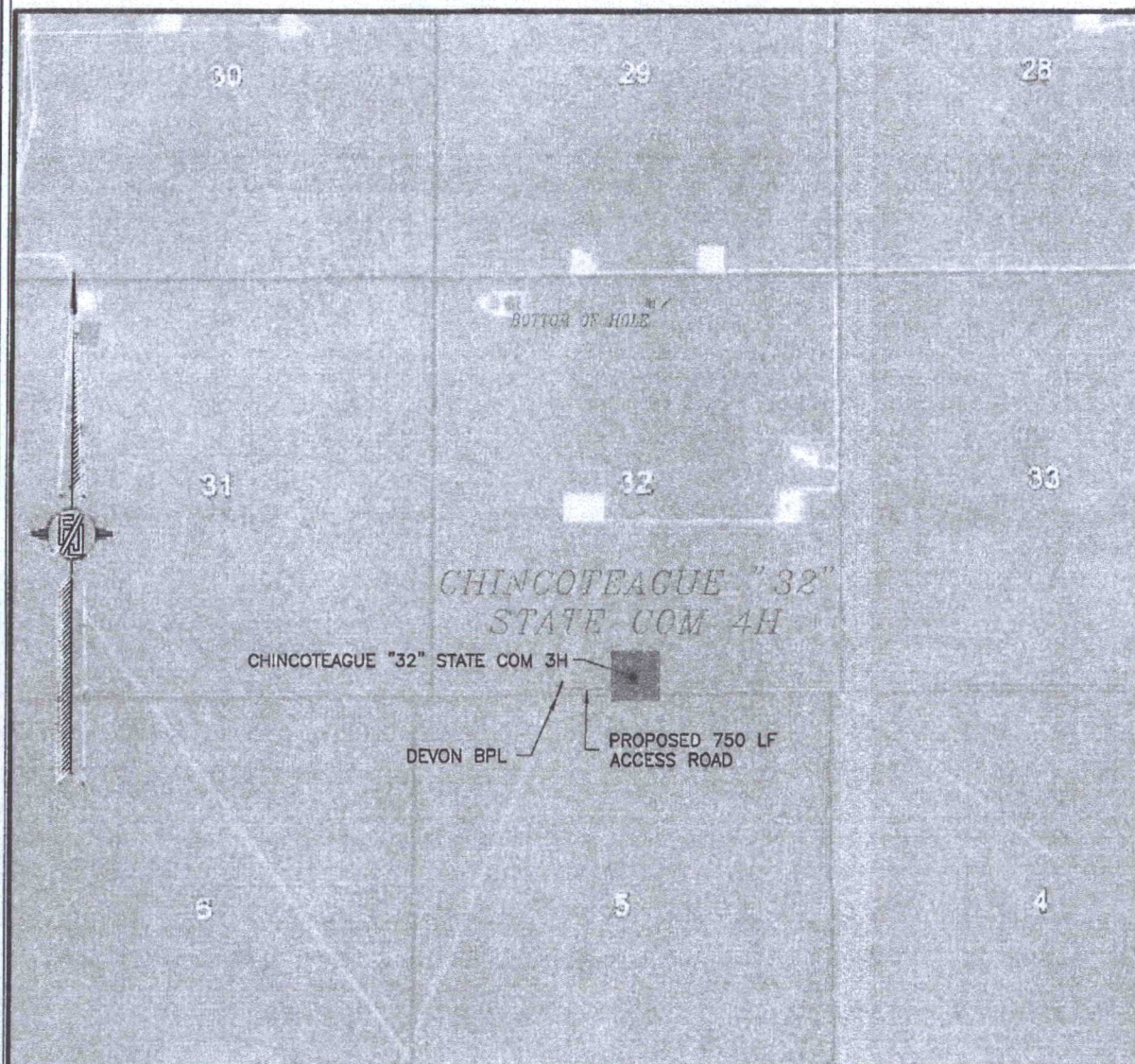
DECEMBER 21, 2015

SURVEY NO. 3346A

MADRON SURVEYING, INC. 301 SOUTH CANAL
(575) 234-3341

CARLSBAD, NEW MEXICO

SECTION 32, TOWNSHIP 24 SOUTH, RANGE 32 EAST, N.M.P.M.
LEA COUNTY, STATE OF NEW MEXICO
AERIAL PHOTO



NOT TO SCALE
AERIAL PHOTO:
GOOGLE EARTH
FEBRUARY 2014

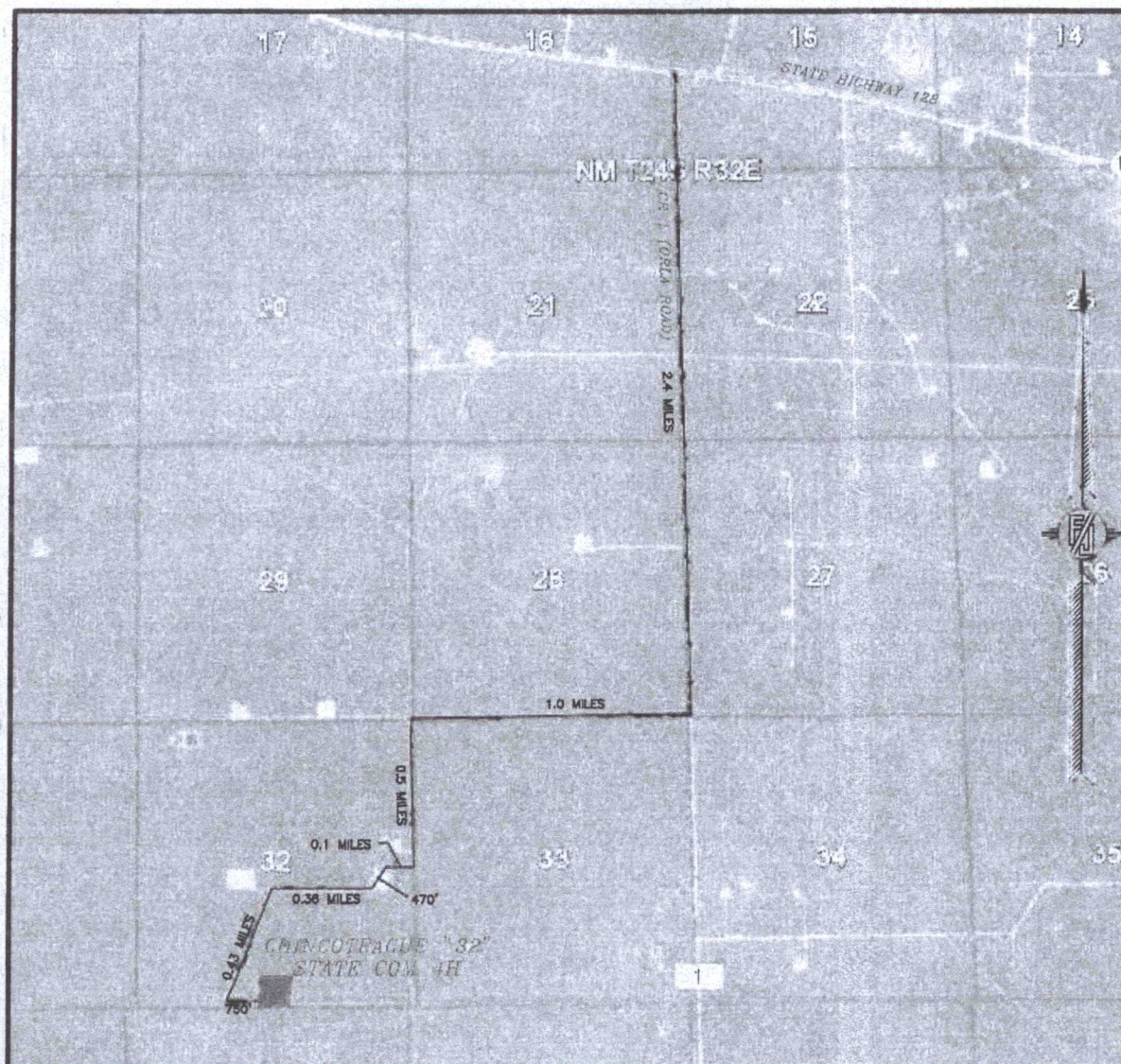
DEVON ENERGY PRODUCTION COMPANY, L.P.
CHINCOTEAGUE "32" STATE COM 4H
LOCATED 200 FT. FROM THE SOUTH LINE
AND 2600 FT. FROM THE EAST LINE OF
SECTION 32, TOWNSHIP 24 SOUTH,
RANGE 32 EAST, N.M.P.M.
LEA COUNTY, STATE OF NEW MEXICO

DECEMBER 21, 2015

SURVEY NO. 3346A

MADRON SURVEYING, INC. 301 SOUTH CANAL (575) 234-3341 CARLSBAD, NEW MEXICO

SECTION 32, TOWNSHIP 24 SOUTH, RANGE 32 EAST, N.M.P.M.
LEA COUNTY, STATE OF NEW MEXICO
ACCESS AERIAL ROUTE MAP



NOT TO SCALE
AERIAL PHOTO:
GOOGLE EARTH
FEBRUARY 2014

DEVON ENERGY PRODUCTION COMPANY, L.P.
CHINCOTEAGUE "32" STATE COM 4H
LOCATED 200 FT. FROM THE SOUTH LINE
AND 2600 FT. FROM THE EAST LINE OF
SECTION 32, TOWNSHIP 24 SOUTH,
RANGE 32 EAST, N.M.P.M.
LEA COUNTY, STATE OF NEW MEXICO

DECEMBER 21, 2015

SURVEY NO. 3346A

MADRON SURVEYING, INC. 301 SOUTH CANAL (575) 234-3341 CARLSBAD, NEW MEXICO