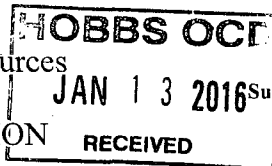


District I
1625 N. French Dr., Hobbs, NM 88240
Phone: (575) 393-6161 Fax: (575) 393-0720
District II
811 S. First St., Artesia, NM 88210
Phone: (575) 748-1283 Fax: (575) 748-9720
District III
1000 Rio Brazos Road, Aztec, NM 87410
Phone: (505) 334-6178 Fax: (505) 334-6170
District IV
1220 S. St. Francis Dr., Santa Fe, NM 87505
Phone: (505) 476-3460 Fax: (505) 476-3462

State of New Mexico
Energy, Minerals & Natural Resources
Department
OIL CONSERVATION DIVISION
1220 South St. Francis Dr.
Santa Fe, NM 87505



FORM C-102
Revised August 1, 2011
Submit one copy to appropriate
District Office
☐ AMENDED REPORT

WELL LOCATION AND ACREAGE DEDICATION PLAT

¹ API Number 30-025- 43018	² Pool Code 98097	³ Pool Name WC-025 G-09 S263327G; Upper Wolfcamp
⁴ Property Code 715730	⁵ Property Name COLGROVE 35 FED COM	
⁷ GRID No. 7377	⁸ Operator Name EOG RESOURCES, INC.	⁶ Well Number #701H
		⁹ Elevation 3320'

¹⁰Surface Location

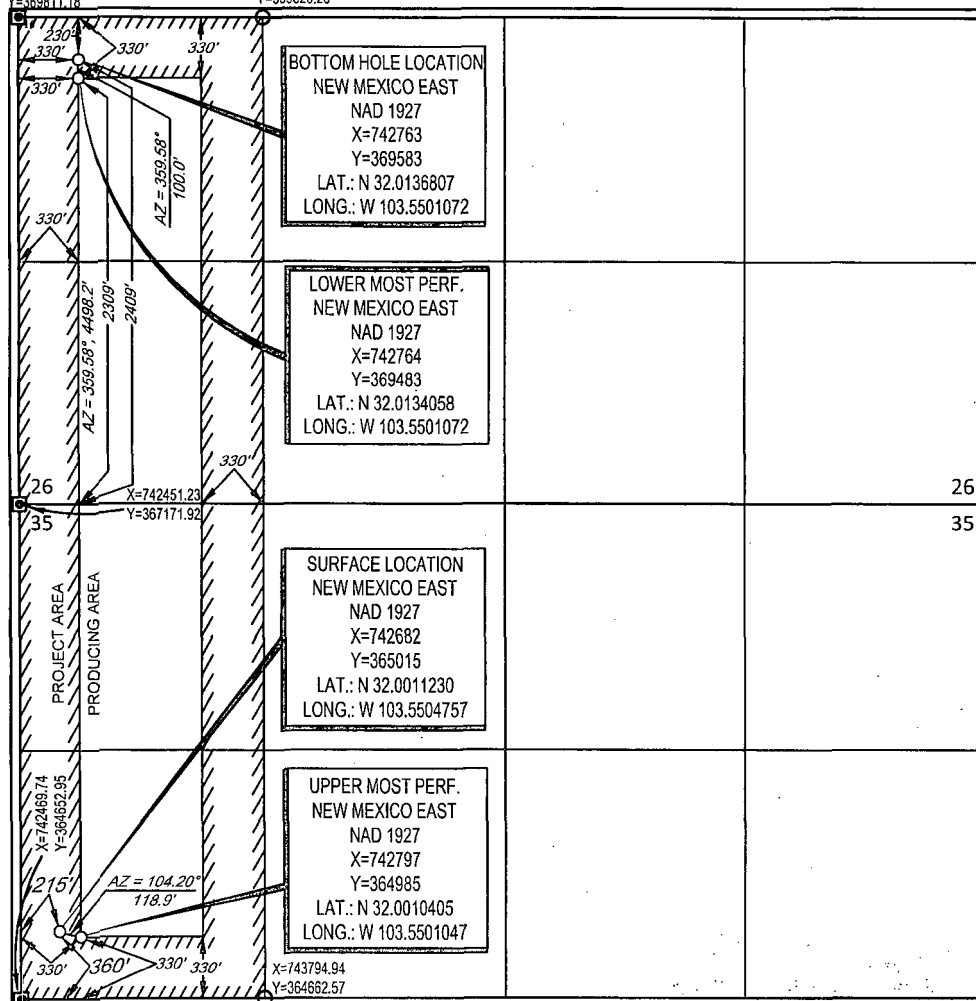
UL or lot no.	Section	Township	Range	Lot Idn	Feet from the	North/South line	Feet from the	East/West line	County
E	35	26-S	33-E	4	360'	SOUTH	215'	WEST	LEA

UL or lot no.	Section	Township	Range	Lot Idn	Feet from the	North/South line	Feet from the	East/West line	County
L	26	26-S	33-E	-	2409'	SOUTH	330'	WEST	LEA

¹² Dedicated Acres 156.62	¹³ Joint or Infill	¹⁴ Consolidation Code	¹⁵ Order No.
--	-------------------------------	----------------------------------	-------------------------

No allowable will be assigned to this completion until all interests have been consolidated or a non-standard unit has been approved by the division.

X=742431.30
Y=369811.18
X=743751.62
Y=369820.26



17 OPERATOR CERTIFICATION
I hereby certify that the information contained herein is true and complete to the best of my knowledge and belief, and that this organization either owns a working interest or unleased mineral interest in the land including the proposed bottom hole location or has a right to drill this well at this location pursuant to a contract with an owner of such a mineral or working interest, or to a voluntary pooling agreement or a compulsory pooling order heretofore entered by the division.

Renee Jarratt
Signature Date **6/25/15**

Renee Jarratt
Printed Name

E-mail Address

18 SURVEYOR CERTIFICATION
I hereby certify that the well location shown on this plat was plotted from field notes of actual surveys made by me or under my supervision, and that the same is true to the best of my belief.

05/12/2015
Date of Survey
Signature and Seal of Professional Surveyor
MICHAEL BROWN
NEW MEXICO
18329
PROFESSIONAL SURVEYOR

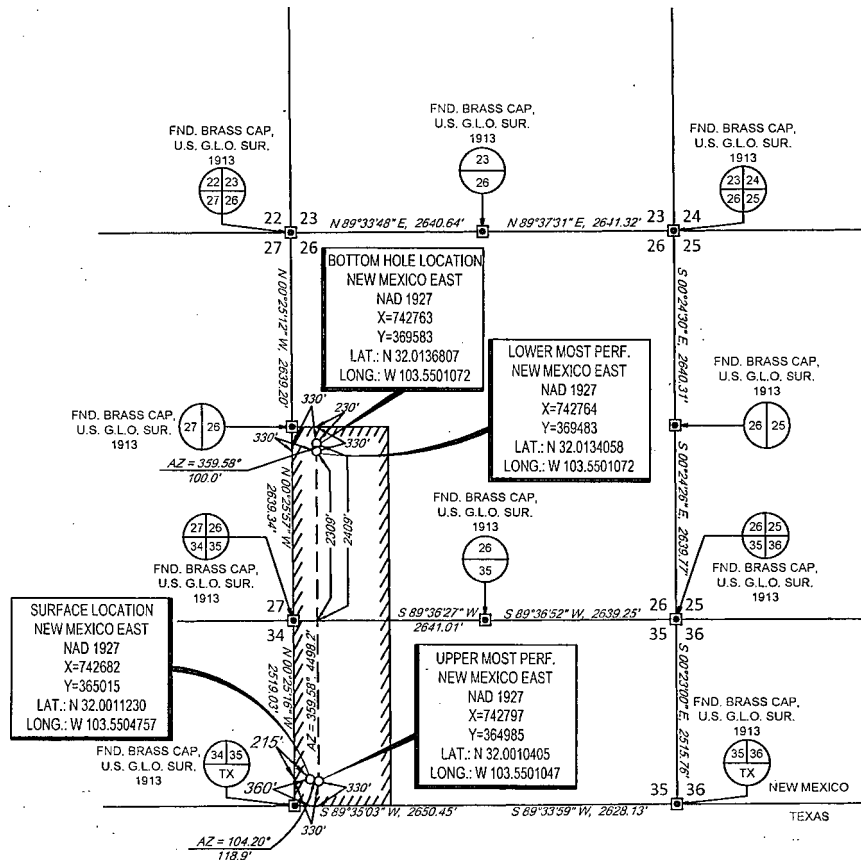
Certificate Number

JAN 14 2016

S:\SURVEY\EOG MIDLAND\COLGROVE_35 FED COM\FINAL PRODUCTS\ILO COLGROVE\35FEDCOM 701H REV1.DWG 6/11/2015 4:53:46 PM mlewin

EXHIBIT 2A

SECTION 35, TOWNSHIP 26-S, RANGE 33-E, N.M.P.M.
LEA COUNTY, NEW MEXICO



SCALE: 1" = 1000'
0' 500' 1000'

LEASE NAME & WELL NO.: COLGROVE 35 FED COM #701H

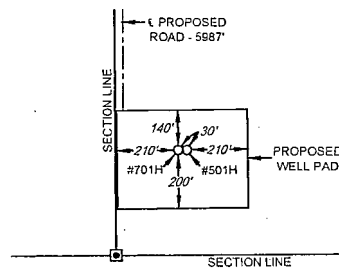
SECTION 35 TWP 26-S RGE 33-E SURVEY N.M.P.M.
COUNTY LEA STATE NM
DESCRIPTION 360' FSL & 215' FWL

DISTANCE & DIRECTION

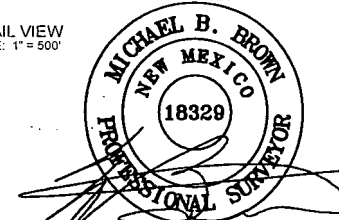
FROM INT. OF NM-18 N. & NM-128, GO WEST ON NM-128 ±14.1
MILES, THENCE SOUTHWEST (LEFT) ON BATTLE AXE RD. ±17.1
MILES, THENCE EAST (LEFT) ON LEASE RD. ±2.1 MILES, THENCE
SOUTH (RIGHT) ON A PROPOSED RD. ±5987 FEET TO A POINT
±276 FEET NORTHWEST OF THIS LOCATION.

ALL BEARINGS, DISTANCES, AND COORDINATE VALUES CONTAINED HEREON ARE GRID
BASED UPON THE NEW MEXICO STATE PLANE COORDINATE SYSTEM, EAST ZONE OF THE
NORTH AMERICAN DATUM 1927, U.S. SURVEY FEET

THIS EASEMENT/SERVITUDE LOCATION SHOWN HEREON HAS BEEN SURVEYED ON THE GROUND
UNDER MY SUPERVISION AND PREPARED ACCORDING TO THE EVIDENCE FOUND AT THE TIME OF
SURVEY, AND DATA PROVIDED BY GEO RESOURCES, INC. THIS CERTIFICATION IS MADE AND LIMITED
TO THOSE PERSONS OR ENTITIES SHOWN ON THE FACE OF THIS PLAN AND IS NON-TRANSFERABLE.
THIS SURVEY IS CERTIFIED FOR THIS TRANSACTION ONLY.



DETAIL VIEW
SCALE: 1" = 500'



Michael Blake Brown, P.S. No. 18329
JUNE 12, 2015

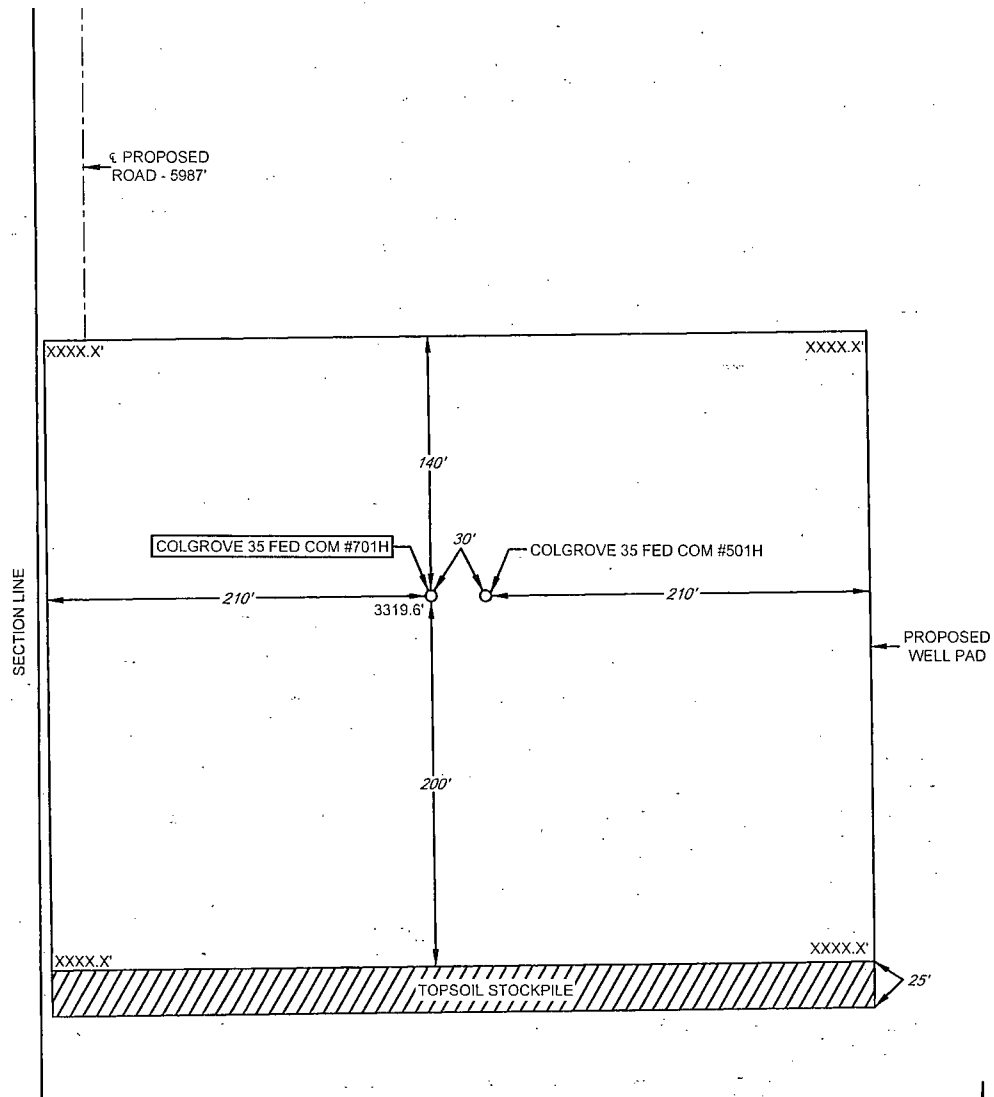
TOPOGRAPHIC
LOYALTY INNOVATION LEGACY
1430 EVERMAN FARMWAY, Ste. 197 • FT. WORTH, TEXAS 76140
TELEPHONE: (817) 744-7512 • FAX: (817) 744-7543
7803 NORTH BIG SPRING • MIDLAND, TEXAS 79705
TELEPHONE: (432) 682-1653 OR (800) 787-1653 • FAX: (432) 682-1743
WWW.TOPOGRAPHIC.COM



EXHIBIT 2B

SECTION 35, TOWNSHIP 26-S, RANGE 33-E, N.M.P.M.
LEA COUNTY, NEW MEXICO

DETAIL VIEW
SCALE: 1" = 100'



LEASE NAME & WELL NO.: COLGROVE 35 FED COM #701H
#701H LATITUDE N 32.0011230 #701H LONGITUDE W 103.5504757

LEGEND

== == == == EXISTING ROAD
----- SECTION LINE
- - - - - PROPOSED ROAD

SCALE: 1" = 100'
0' 50' 100'

ALL BEARINGS, DISTANCES, AND COORDINATE VALUES CONTAINED HEREON ARE GRID
BASED UPON THE NEW MEXICO STATE PLANE COORDINATE SYSTEM, EAST ZONE OF THE
NORTH AMERICAN DATUM 1927, U.S. SURVEY FEET

THIS PROPOSED PAD SITE LOCATION SHOWN HEREON HAS BEEN SURVEYED ON THE GROUND UNDER
MY SUPERVISION AND PREPARED ACCORDING TO THE EVIDENCE FOUND AT THE TIME OF SURVEY,
AND DATA PROVIDED BY EOG RESOURCES, INC. THIS CERTIFICATION IS MADE AND LIMITED TO THOSE
PERSONS OR ENTITIES SHOWN ON THE FACE OF THIS PLAT AND IS NON-TRANSFERABLE. THIS
SURVEY IS CERTIFIED FOR THIS TRANSACTION ONLY.



TOPOGRAPHIC
LOYALTY · INNOVATION · LEGACY

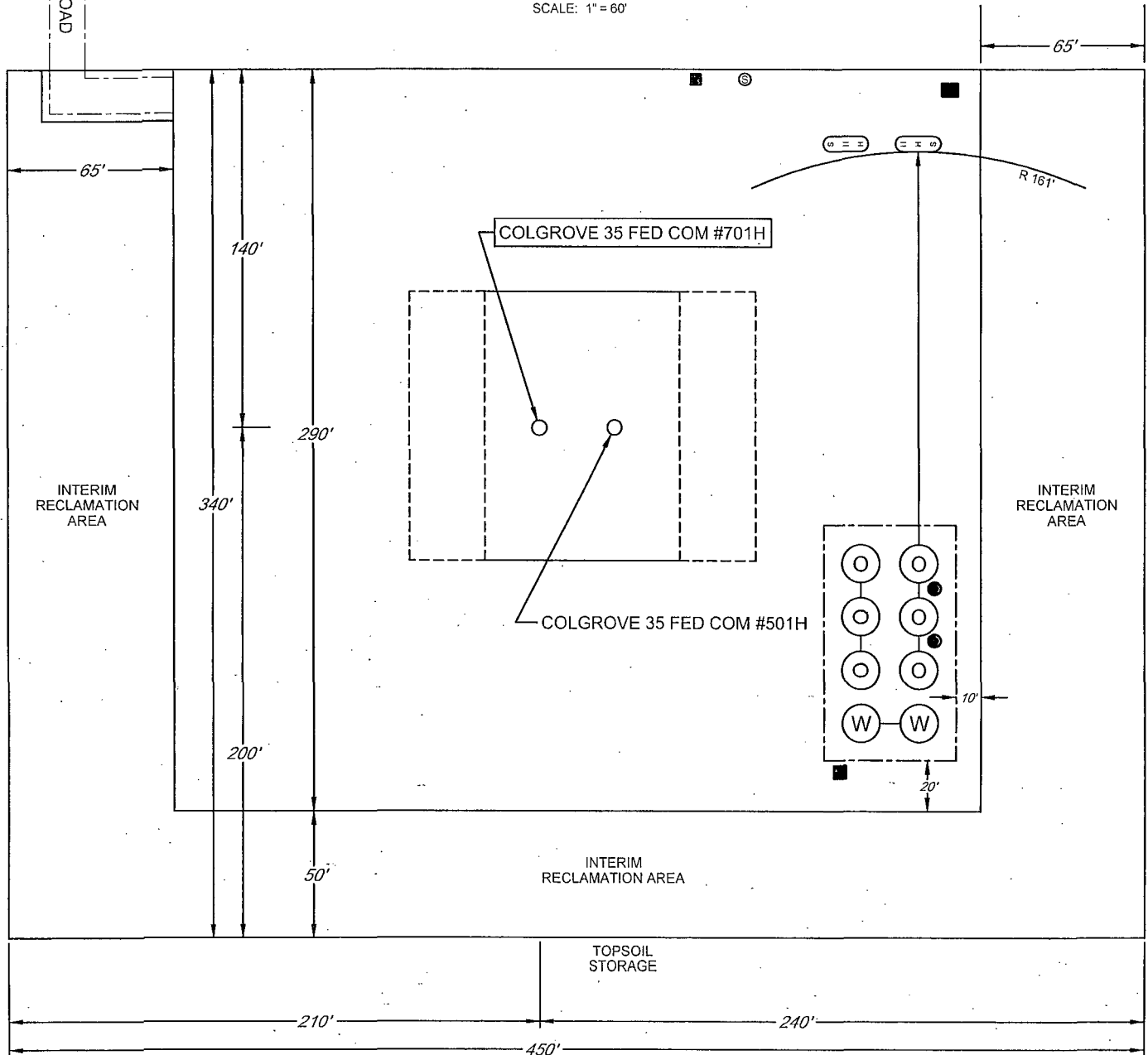
1400 EVERMAN PARKWAY, Ste. 197 • FT. WORTH, TEXAS 76140
TELEPHONE: (817) 744-7512 • FAX (817) 744-7548
2903 NORTH BIG SPRING • MIDLAND, TEXAS 79705
TELEPHONE: (432) 682-1653 OR (800) 767-1653 • FAX (432) 682-1743
WWW.TOPOGRAPHIC.COM

EXHIBIT 2C

RECLAMATION AND FACILITY DIAGRAM - PRODUCTION FACILITIES DIAGRAM

SECTION 35, TOWNSHIP 26-S, RANGE 33-E, N.M.P.M.
LEA COUNTY, NEW MEXICO

DETAIL VIEW
SCALE: 1" = 60'



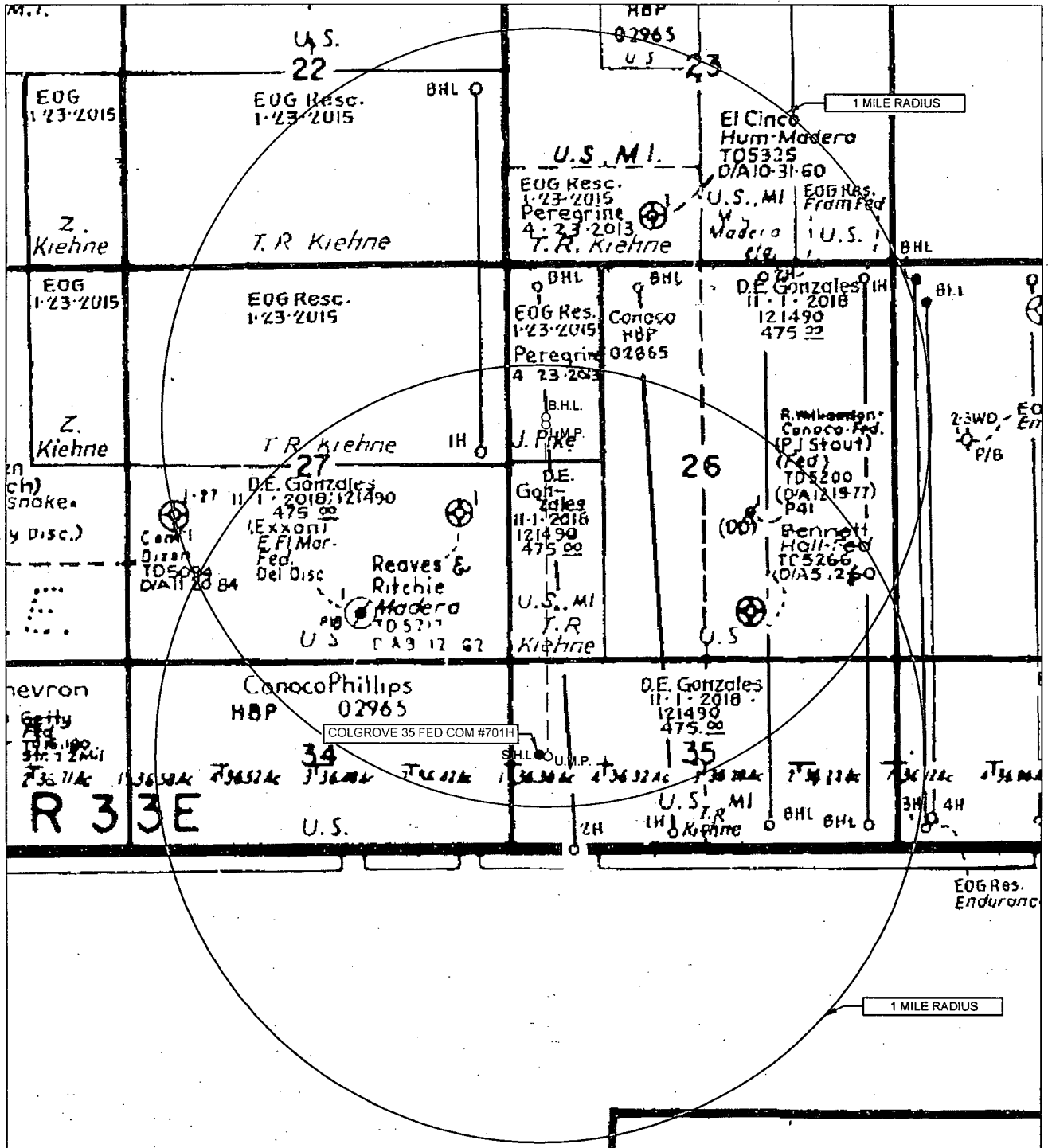
LEASE NAME & WELL NO.: COLGROVE 35 FED COM #701H
#701H LATITUDE N 32.0011230 #701H LONGITUDE W 103.5504757

LEGEND

○	500 BBL OIL TANK	⊙	FLARE SEPARATOR
W	500 BBL WATER TANK	■	VRU
H S	36 x 15 HEATER/ SEPARATOR	●	48 X 25 VRT
		■	FP FLARE
		■	OP FLARE

EXHIBIT 3

SECTION 35, TOWNSHIP 26-S, RANGE 33-E, N.M.P.M.
LEA COUNTY, NEW MEXICO



LEASE NAME & WELL NO.: COLGROVE 35 FED COM #701H

SCALE: NTS

#701H LATITUDE N 32.0011230

#701H LONGITUDE W 103.5504757

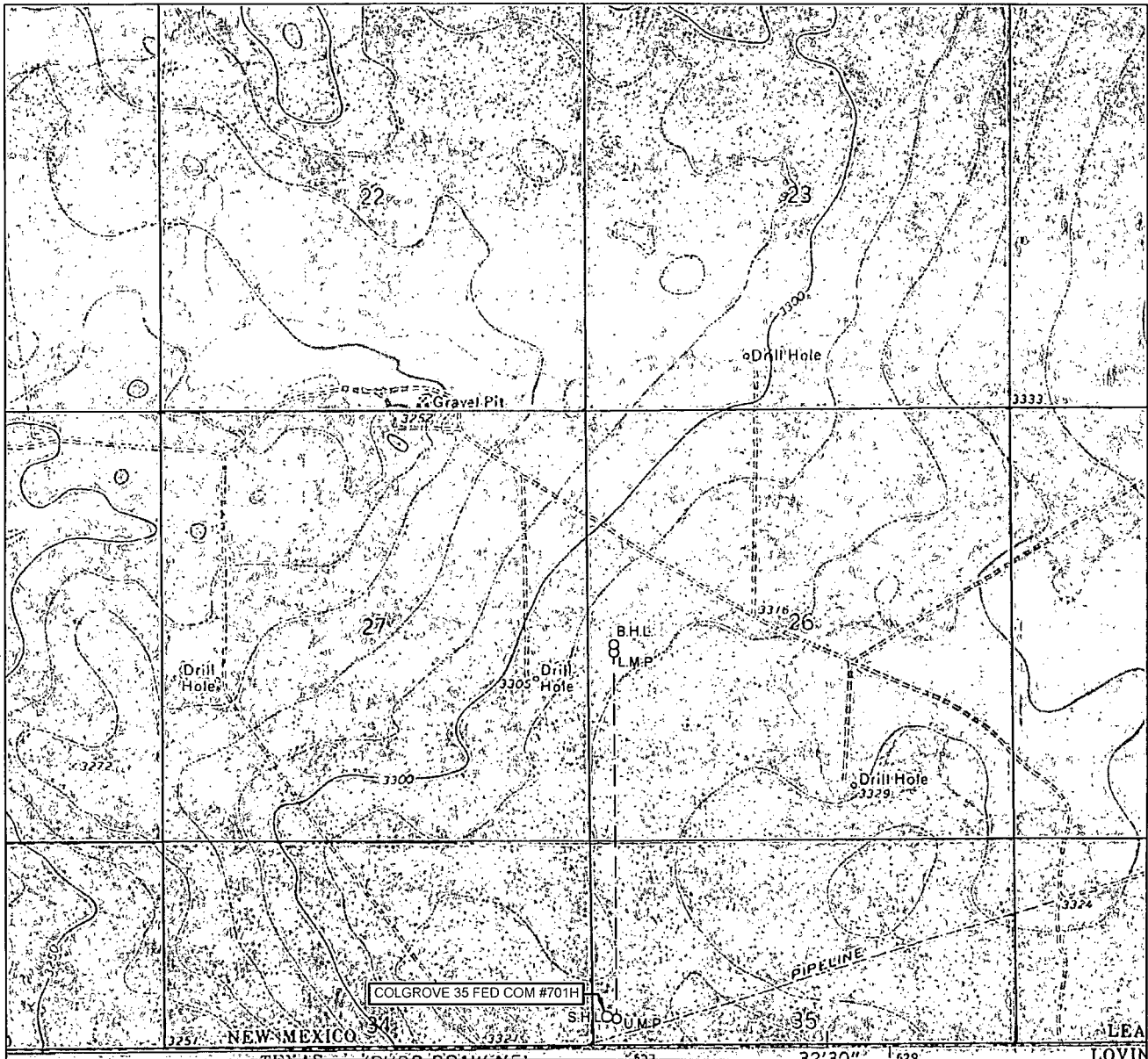
ALL BEARINGS, DISTANCES, AND COORDINATE VALUES CONTAINED HEREON ARE GRID BASED UPON THE NEW MEXICO STATE PLANE COORDINATE SYSTEM, EAST ZONE OF THE NORTH AMERICAN DATUM 1927, U.S. SURVEY FEET

THIS EASEMENT/SERVITUDE LOCATION SHOWN HEREON HAS BEEN SURVEYED ON THE GROUND UNDER MY SUPERVISION AND PREPARED ACCORDING TO THE EVIDENCE FOUND AT THE TIME OF SURVEY, AND DATA PROVIDED BY EOG RESOURCES, INC. THIS CERTIFICATION IS MADE AND LIMITED TO THOSE PERSONS OR ENTITIES SHOWN ON THE FACE OF THIS PLAT AND IS NON-TRANSFERABLE. THIS SURVEY IS CERTIFIED FOR THIS TRANSACTION ONLY.



1400 EVERMAN PARKWAY, Ste. 197 • FT. WORTH, TEXAS 76140
TELEPHONE: (817) 744-7512 • FAX (817) 744-7548
2903 NORTH BIG SPRING • MIDLAND, TEXAS 79705
TELEPHONE: (432) 682-1653 OR (800) 767-1653 • FAX (432) 682-1743
WWW.TOPOGRAPHIC.COM

LOCATION & ELEVATION VERIFICATION MAP



LEASE NAME & WELL NO.: COLGROVE 35 FED COM #701H

SECTION 35 TWP 26-S RGE 33-E SURVEY N.M.P.M.
 COUNTY LEA STATE NM ELEVATION 3320'
 DESCRIPTION 360' FSL & 215' FWL

LATITUDE N 32.0011230 LONGITUDE W 103.5504757



SCALE: 1" = 2000'
 0' 1000' 2000'

THIS EASEMENT/SERVITUDE LOCATION SHOWN HEREON HAS BEEN SURVEYED ON THE GROUND UNDER MY SUPERVISION AND PREPARED ACCORDING TO THE EVIDENCE FOUND AT THE TIME OF SURVEY, AND DATA PROVIDED BY EOG RESOURCES, INC. THIS CERTIFICATION IS MADE AND LIMITED TO THOSE PERSONS OR ENTITIES SHOWN ON THE FACE OF THIS PLAT AND IS NON-TRANSFERABLE. THIS SURVEY IS CERTIFIED FOR THIS TRANSACTION ONLY.

ALL BEARINGS, DISTANCES, AND COORDINATE VALUES CONTAINED HEREON ARE GRID BASED UPON THE NEW MEXICO STATE PLANE COORDINATE SYSTEM, EAST ZONE OF THE NORTH AMERICAN DATUM 1927, U.S. SURVEY FEET.

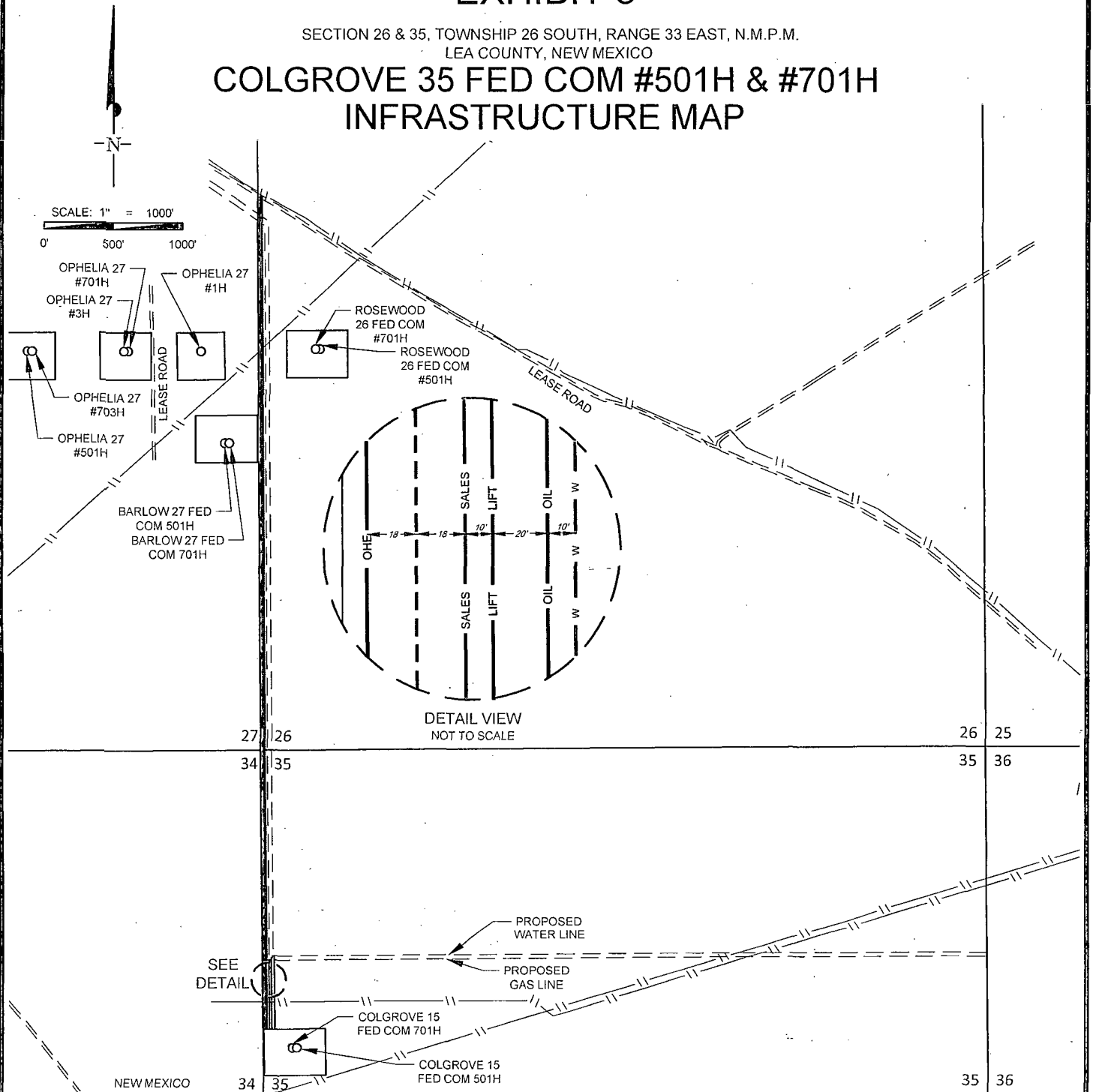


1400 EVERMAN PARKWAY, Ste. 197 • FT. WORTH, TEXAS 76140
 TELEPHONE: (817) 744-7512 • FAX (817) 744-7548
 2903 NORTH BIG SPRING • MIDLAND, TEXAS 79705
 TELEPHONE: (432) 682-1653 OR (800) 767-1653 • FAX (432) 682-1743
 WWW.TOPOGRAPHIC.COM

EXHIBIT 5

SECTION 26 & 35, TOWNSHIP 26 SOUTH, RANGE 33 EAST, N.M.P.M.
LEA COUNTY, NEW MEXICO

COLGROVE 35 FED COM #501H & #701H INFRASTRUCTURE MAP



Geog resources, inc.

COLGROVE 35 FED COM
#501H & #701H
INFRASTRUCTURE MAP

REVISION:

INT	DATE

DATE: 06/15/15

FILE: S:\COLGROVE35 FED COM 501H & 701H INFRASTRUCTURE

DRAWN BY: MML

SHEET: 1 OF 1

— W —	PRODUCED WATER 10" POLY LINE -TOTAL FOOTAGE 531 FT -(WORKING PRESSURE 75-125 PSI)	COLGROVE 15 FED COM 501H & #701H 531 FT
— LIFT —	GAS LIFT 8" STEEL LINE -TOTAL FOOTAGE 501 FT -(WORKING PRESSURE 75-125 PSI)	COLGROVE 15 FED COM 501H & #701H 501 FT
— OHE —	ELECTRIC LINE -TOTAL FOOTAGE 5966 FT	COLGROVE 15 FED COM 501H & #701H 5966 FT

— SALES —	GAS SALES 12" STEEL LINE -TOTAL FOOTAGE 501 FT -(WORKING PRESSURE 75-125 PSI)	COLGROVE 15 FED COM 501H & #701H 501 FT
— OIL —	OIL SALES 6" STEEL LINE -TOTAL FOOTAGE 516 FT -(WORKING PRESSURE 75-125 PSI)	COLGROVE 15 FED COM 501H & #701H 516 FT
---	PROPOSED LEASE RD. -TOTAL FOOTAGE 5987 FT	COLGROVE 15 FED COM 501H & #701H 5987 FT