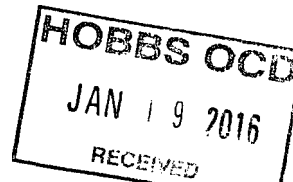


District I  
1625 N. French Dr., Hobbs, NM 88240  
Phone: (575) 393-6161 Fax: (575) 393-0720  
District II  
811 S. First St., Artesia, NM 88210  
Phone: (575) 748-1283 Fax: (575) 748-9720  
District III  
1000 Rio Brazos Road, Aztec, NM 87410  
Phone: (505) 334-6178 Fax: (505) 334-6170  
District IV  
1220 S. St. Francis Dr., Santa Fe, NM 87505  
Phone: (505) 476-3460 Fax: (505) 476-3462

State of New Mexico  
Energy, Minerals & Natural Resources Department  
OIL CONSERVATION DIVISION  
1220 South St. Francis Dr.  
Santa Fe, NM 87505



Form C-102  
Revised August 1, 2011  
Submit one copy to appropriate  
District Office

☐ AMENDED REPORT

WELL LOCATION AND ACREAGE DEDICATION PLAT

|  |  |                                       |  |
|--|--|---------------------------------------|--|
| <sup>1</sup> API Number<br><b>70-024-43028</b> |  | <sup>2</sup> Pool Code<br><b>2209</b> | <sup>3</sup> Pool Name<br><b>Antelope Ridge; Bone Spring, West</b> |
| <sup>4</sup> Property Code<br><b>315797</b>    | <sup>5</sup> Property Name<br><b>WHITE DOVE 17 FED COM</b>                 |                                       | <sup>6</sup> Well Number<br><b>3H</b>                              |
| <sup>7</sup> OGRID No.<br><b>6137</b>          | <sup>8</sup> Operator Name<br><b>DEVON ENERGY PRODUCTION COMPANY, L.P.</b> |                                       | <sup>9</sup> Elevation<br><b>3479.0</b>                            |

<sup>10</sup> Surface Location

| UL or lot no. | Section   | Township    | Range       | Lot Idn | Feet from the | North/South line | Feet from the | East/West line | County     |
|---------------|-----------|-------------|-------------|---------|---------------|------------------|---------------|----------------|------------|
| <b>N</b>      | <b>17</b> | <b>23 S</b> | <b>34 E</b> |         | <b>260</b>    | <b>SOUTH</b>     | <b>1400</b>   | <b>WEST</b>    | <b>LEA</b> |

<sup>11</sup> Bottom Hole Location If Different From Surface

| UL or lot no. | Section   | Township    | Range       | Lot Idn | Feet from the | North/South line | Feet from the | East/West line | County     |
|---------------|-----------|-------------|-------------|---------|---------------|------------------|---------------|----------------|------------|
| <b>C</b>      | <b>17</b> | <b>23 S</b> | <b>34 E</b> |         | <b>330</b>    | <b>NORTH</b>     | <b>2260</b>   | <b>WEST</b>    | <b>LEA</b> |

| <sup>12</sup> Dedicated Acres | <sup>13</sup> Joint or Infill | <sup>14</sup> Consolidation Code | <sup>15</sup> Order No. |
|-------------------------------|-------------------------------|----------------------------------|-------------------------|
| <b>160 ac</b>                 |                               |                                  |                         |

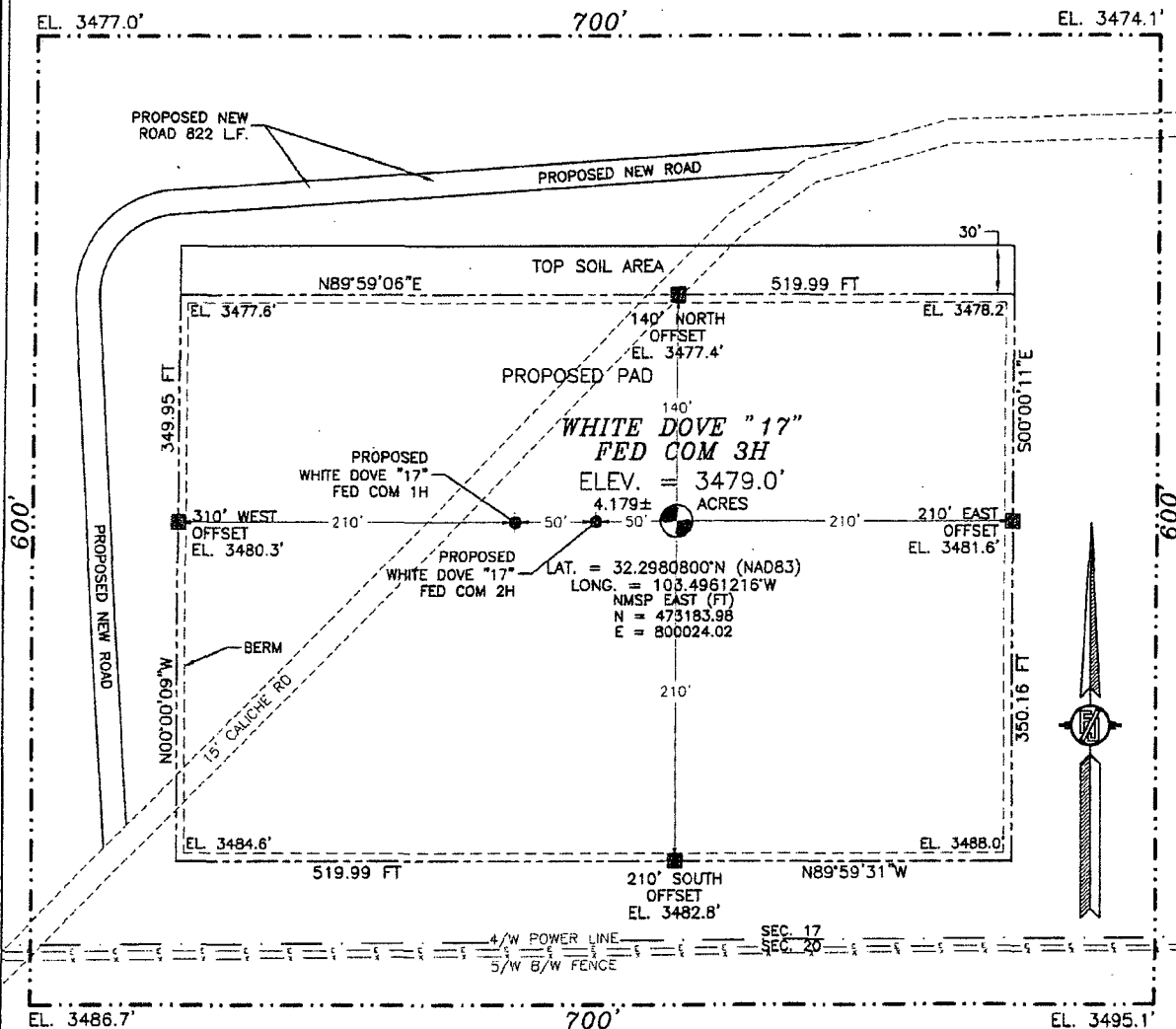
No allowable will be assigned to this completion until all interests have been consolidated or a non-standard unit has been approved by the division.

|  |  |   |  |   |
|--|--|---|--|---|
| <p>N89°34'22"E 2641.91 FT</p> <p>N89°33'22"E 2641.60 FT</p> <p>2260'</p> <p>NW CORNER SEC. 17<br/>LAT. = 32.3118770°N<br/>LONG. = 103.5006807°W<br/>NMSP EAST (FT)<br/>N = 478192.37<br/>E = 798576.29</p> <p>W/4 CORNER SEC. 17<br/>LAT. = 32.3046206°N<br/>LONG. = 103.5006648°W<br/>NMSP EAST (FT)<br/>N = 475552.54<br/>E = 798601.70</p> <p>SW CORNER SEC. 17<br/>LAT. = 32.2973633°N<br/>LONG. = 103.5006503°W<br/>NMSP EAST (FT)<br/>N = 472912.34<br/>E = 798626.69</p> <p>1400'</p> <p>589°31'16"W 2641.35 FT</p> <p>589°31'34"W 2641.23 FT</p> |  | <p>500°31'40"E 2639.88 FT</p> <p>500°32'45"E 2637.64 FT</p> <p>500°32'45"E 2637.64 FT</p> |  | <p><b>17 OPERATOR CERTIFICATION</b></p> <p>I hereby certify that the information contained herein is true and complete to the best of my knowledge and belief, and that this organization either owns a working interest or undivided mineral interest in the land including the proposed bottom hole location or has a right to drill this well at this location pursuant to a contract with an owner of such a mineral or working interest, or to a voluntary pooling agreement or a compulsory pooling order heretofore entered by the division.</p> <p><i>Trina C. Couch</i> 10/6/15<br/>Signature Date</p> <p>Trina C. Couch, Regulatory Analyst</p> <p>Printed Name</p> <p>trina.couch@dvn.com</p> <p>E-mail Address</p> <p><b>18 SURVEYOR CERTIFICATION</b></p> <p>I hereby certify that the well location shown on this plat was plotted from field notes of actual surveys made by me or under my supervision, and that the same is true and correct to the best of my belief.</p> <p>SEPTEMBER 10, 2015<br/>Date of Survey</p> <p><i>[Signature]</i><br/>Surveyor</p> <p>Certificate Number: 12797<br/>SURVEY NO. 42029</p> |
|--|--|---|--|---|

JAN 20 2016

SECTION 17, TOWNSHIP 23 SOUTH, RANGE 34 EAST, N.M.P.M.  
LEA COUNTY, STATE OF NEW MEXICO  
SITE MAP

NOTE: LATITUDE AND LONGITUDE COORDINATES ARE SHOWN USING THE NORTH AMERICAN DATUM OF 1983 (NAD83). LISTED NEW MEXICO STATE PLANE EAST COORDINATES ARE GRID (NAD83). BASIS OF BEARING AND DISTANCES USED ARE NEW MEXICO STATE PLANE EAST COORDINATES MODIFIED TO THE SURFACE.



010 50 100 200

SCALE 1" = 100'

DIRECTIONS TO LOCATION

FROM THE INTERSECTION OF STATE HIGHWAY #128 AND COUNTY ROAD #21 (DELAWARE BASIN ROAD) GO NORTH ON COUNTY ROAD #21 APPROX. 6.1 MILES TO A LEASE ROAD ON RIGHT (EAST) TURN EAST AT LEASE ROAD GO APPROX. 0.1 MILE TURN LEFT (NORTH) GO NORTH 0.8 MILE ROAD TURNS RIGHT (NORTHEAST) GO NORTHEAST APPROX. 0.4 MILE TO LOCATION

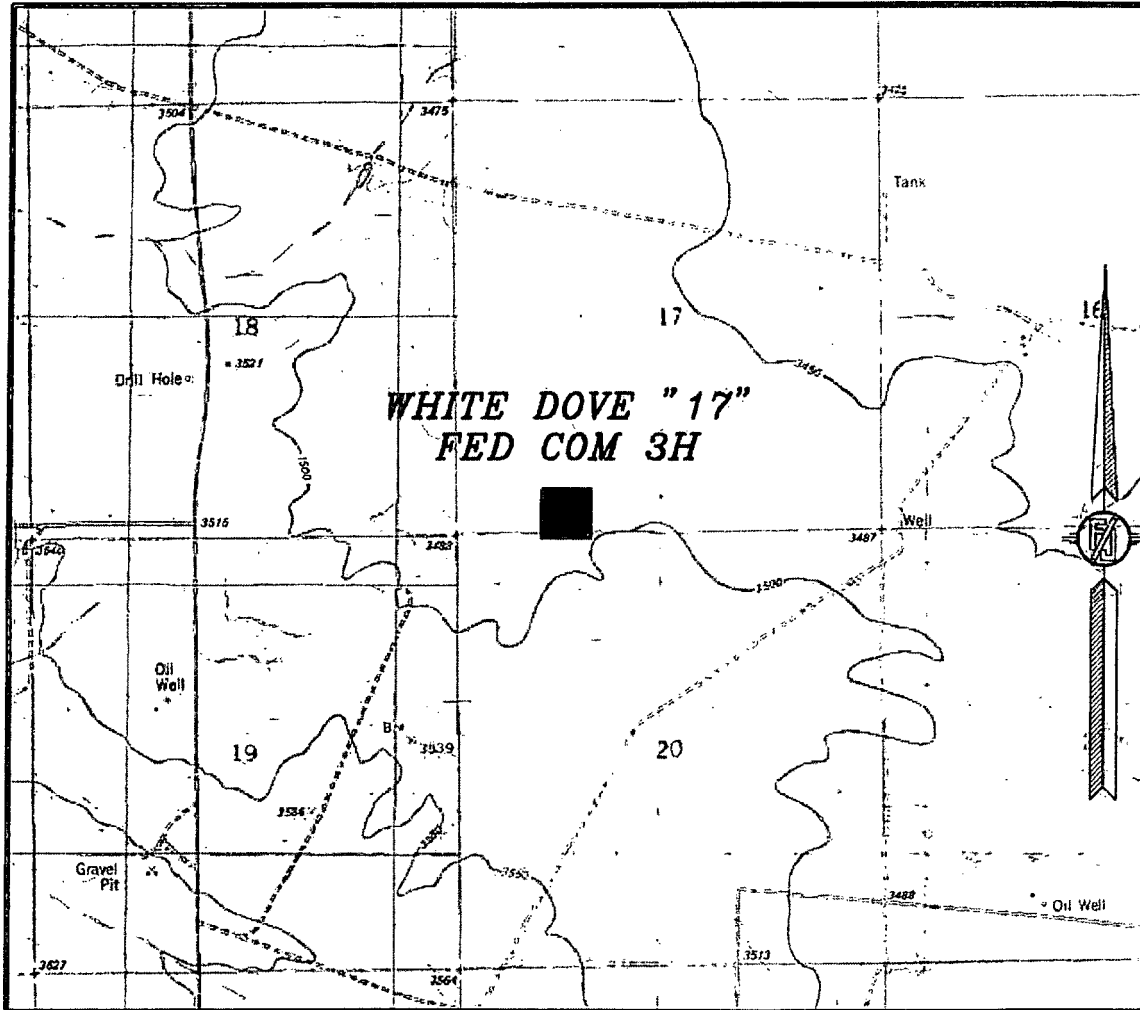
DEVON ENERGY PRODUCTION COMPANY, L.P.  
**WHITE DOVE "17" FED COM 3H**  
LOCATED 260 FT. FROM THE SOUTH LINE  
AND 1400 FT. FROM THE WEST LINE OF  
SECTION 17, TOWNSHIP 23 SOUTH,  
RANGE 34 EAST, N.M.P.M.  
LEA COUNTY, STATE OF NEW MEXICO

SEPTEMBER 15, 2015

SURVEY NO. 4202B

MADRON SURVEYING, INC. 301 SOUTH CANAL (575) 234-3341 CARLSBAD, NEW MEXICO

SECTION 17, TOWNSHIP 23 SOUTH, RANGE 34 EAST, N.M.P.M.  
LEA COUNTY, STATE OF NEW MEXICO  
LOCATION VERIFICATION MAP



USGS QUAD MAP:  
SAN SIMON SINK

NOT TO SCALE

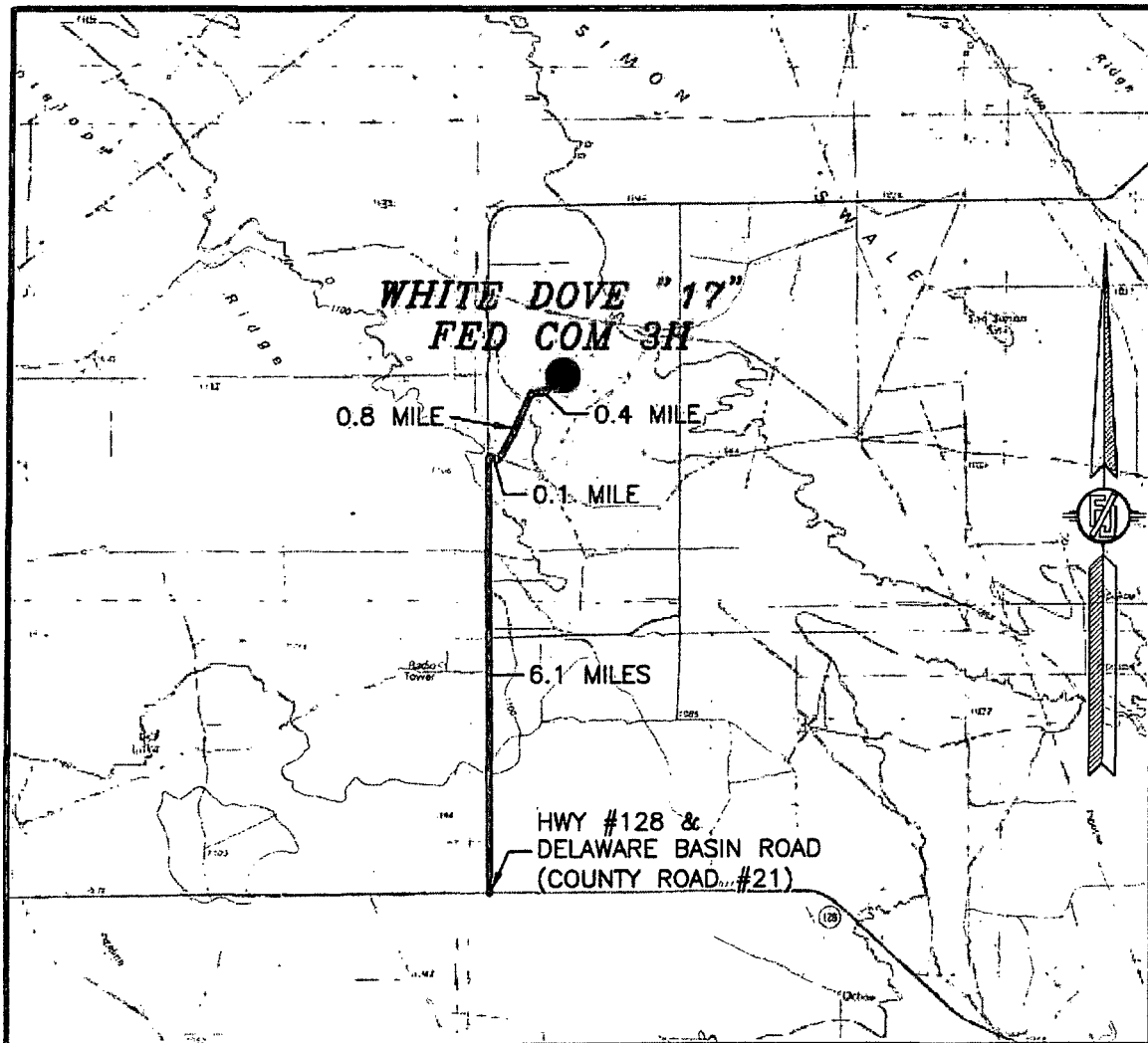
DEVON ENERGY PRODUCTION COMPANY, L.P.  
**WHITE DOVE "17" FED COM 3H**  
LOCATED 260 FT. FROM THE SOUTH LINE  
AND 1400 FT. FROM THE WEST LINE OF  
SECTION 17, TOWNSHIP 23 SOUTH,  
RANGE 34 EAST, N.M.P.M.  
LEA COUNTY, STATE OF NEW MEXICO

SEPTEMBER 15, 2015

SURVEY NO. 4202B

MADRON SURVEYING, INC. 301 SOUTH CANAL (575) 234-3341 CARLSBAD, NEW MEXICO

SECTION 17, TOWNSHIP 23 SOUTH, RANGE 34 EAST, N.M.P.M.  
LEA COUNTY, STATE OF NEW MEXICO  
VICINITY MAP



DISTANCES IN MILES

NOT TO SCALE

**DIRECTIONS TO LOCATION**

FROM THE INTERSECTION OF STATE HIGHWAY #128 AND COUNTY ROAD #21 (DELAWARE BASIN ROAD) GO NORTH ON COUNTY ROAD #21 APPROX. 6.1 MILES TO A LEASE ROAD ON RIGHT (EAST) TURN EAST AT LEASE ROAD GO APPROX. 0.1 MILE TURN LEFT (NORTH) GO NORTH 0.8 MILE ROAD TURNS RIGHT (NORTHEAST) GO NORTHEAST APPROX. 0.4 MILE TO LOCATION

**DEVON ENERGY PRODUCTION COMPANY, L.P.**

**WHITE DOVE "17" FED COM 3H**

LOCATED 260 FT. FROM THE SOUTH LINE

AND 1400 FT. FROM THE WEST LINE OF

SECTION 17, TOWNSHIP 23 SOUTH,

RANGE 34 EAST, N.M.P.M.

LEA COUNTY, STATE OF NEW MEXICO

SEPTEMBER 15, 2015

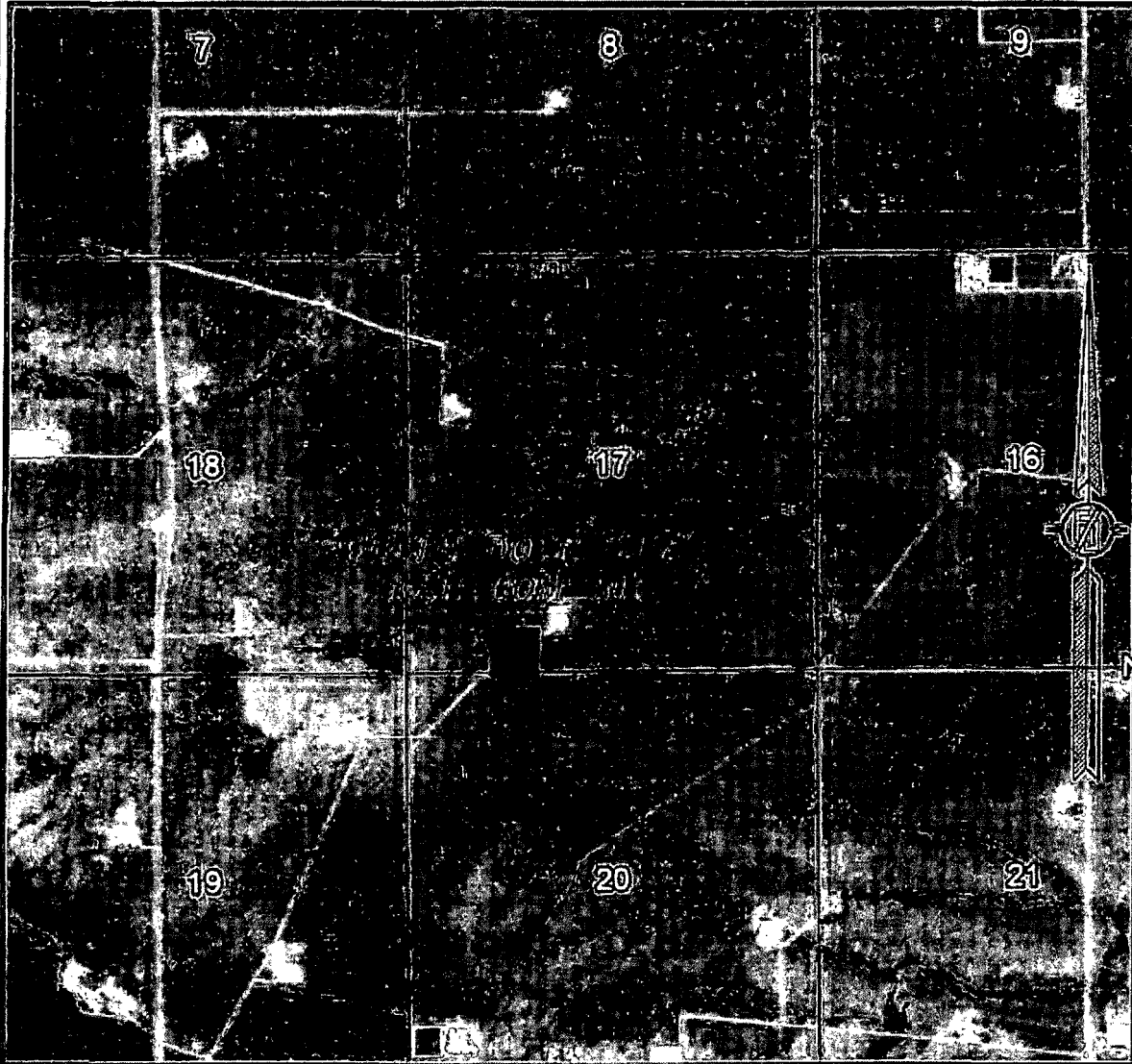
SURVEY NO. 4202B

MADRON SURVEYING, INC.

301 SOUTH CANAL  
(575) 234-3341

CARLSBAD, NEW MEXICO

SECTION 17, TOWNSHIP 23 SOUTH, RANGE 34 EAST, N.M.P.M.  
LEA COUNTY, STATE OF NEW MEXICO  
AERIAL PHOTO



NOT TO SCALE  
AERIAL PHOTO:  
GOOGLE EARTH  
FEB. 2014

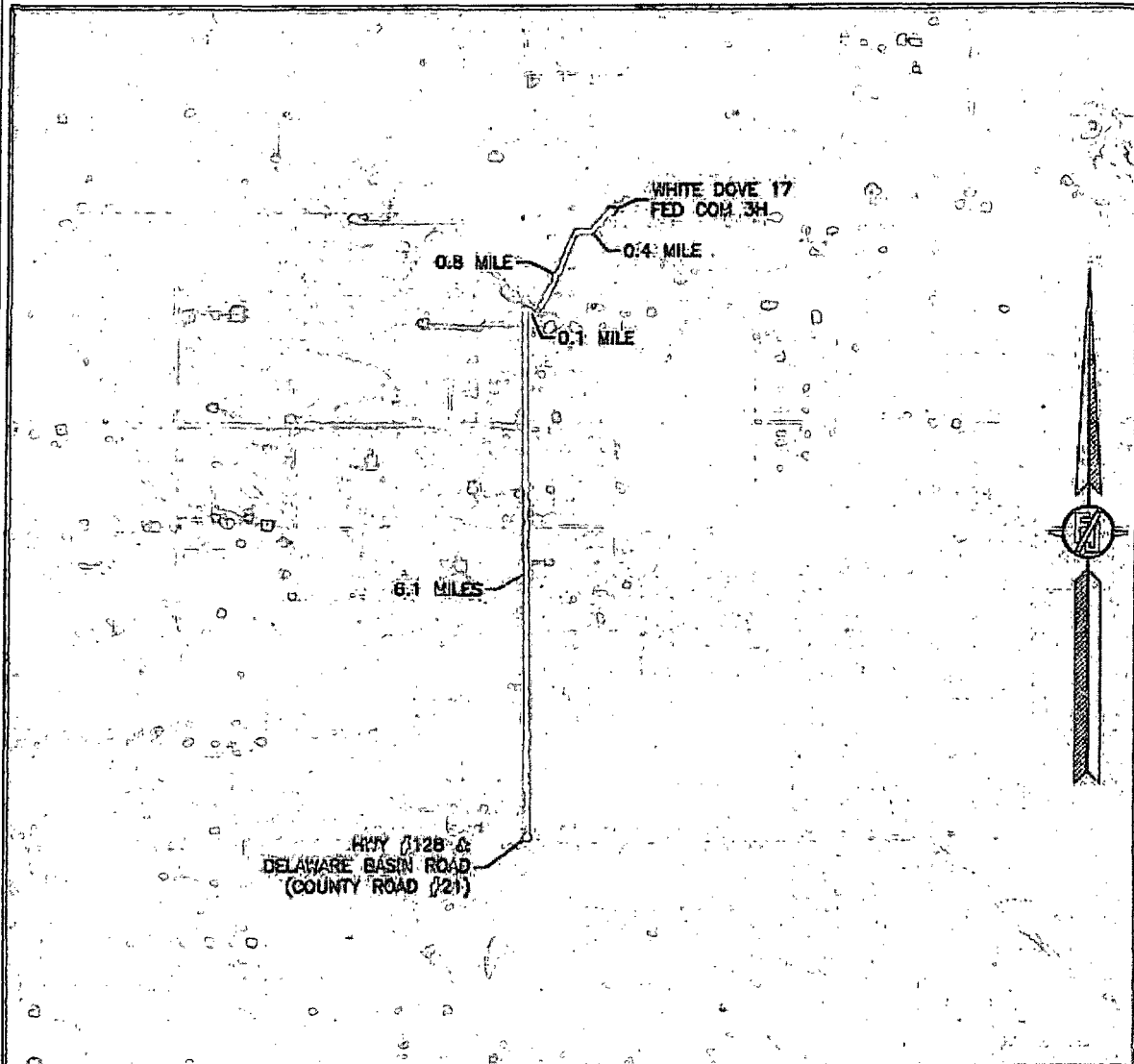
DEVON ENERGY PRODUCTION COMPANY, L.P.  
WHITE DOVE "17" FED COM 3H  
LOCATED 260 FT. FROM THE SOUTH LINE  
AND 1400 FT. FROM THE WEST LINE OF  
SECTION 17, TOWNSHIP 23 SOUTH,  
RANGE 34 EAST, N.M.P.M.  
LEA COUNTY, STATE OF NEW MEXICO

SEPTEMBER 15, 2015

SURVEY NO. 4202B

MADRON SURVEYING, INC. 301 SOUTH CANAL (575) 234-3341 CARLSBAD, NEW MEXICO

SECTION 17, TOWNSHIP 23 SOUTH, RANGE 34 EAST, N.M.P.M.  
LEA COUNTY, STATE OF NEW MEXICO  
AERIAL ACCESS ROUTE MAP



NOT TO SCALE  
AERIAL PHOTO:  
GOOGLE EARTH  
FEB. 2014

DEVON ENERGY PRODUCTION COMPANY, L.P.

**WHITE DOVE "17" FED COM 3H**

LOCATED 260 FT. FROM THE SOUTH LINE  
AND 1400 FT. FROM THE WEST LINE OF  
SECTION 17, TOWNSHIP 23 SOUTH,  
RANGE 34 EAST, N.M.P.M.  
LEA COUNTY, STATE OF NEW MEXICO

SEPTEMBER 15, 2015

SURVEY NO. 4202B

MADRON SURVEYING, INC. 301 SOUTH CANAL (575) 234-3341 CARLSBAD, NEW MEXICO

