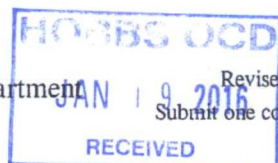


District I
1625 N. French Dr., Hobbs, NM 88240
Phone: (575) 393-6161 Fax: (575) 393-0720
District II
811 S. First St., Artesia, NM 88210
Phone: (575) 748-1283 Fax: (575) 748-9720
District III
1000 Rio Brazos Road, Aztec, NM 87410
Phone: (505) 334-6178 Fax: (505) 334-6170
District IV
1220 S. St. Francis Dr., Santa Fe, NM 87505
Phone: (505) 476-3460 Fax: (505) 476-3462

State of New Mexico
Energy, Minerals & Natural Resources Department
OIL CONSERVATION DIVISION
1220 South St. Francis Dr.
Santa Fe, NM 87505



Form C-102

Revised August 1, 2011
Submit one copy to appropriate
District Office

☒ AMENDED REPORT

WELL LOCATION AND ACREAGE DEDICATION PLAT

¹ API Number 30-025-42933		² Pool Code 96434	³ Pool Name RED HILLS; BONE SPRING, NORTH
⁴ Property Code 315634	⁵ Property Name BOOMSLANG 14-23 FED		⁶ Well Number 4H
⁷ OGRID No. 6137	⁸ Operator Name DEVON ENERGY PRODUCTION COMPANY, L.P.		⁹ Elevation 3601.9

¹⁰ Surface Location

UL or lot no.	Section	Township	Range	Lot Idn	Feet from the	North/South line	Feet from the	East/West line	County
B	14	24 S	33 E		200	NORTH	1930	EAST	LEA

¹¹ Bottom Hole Location If Different From Surface

UL or lot no.	Section	Township	Range	Lot Idn	Feet from the	North/South line	Feet from the	East/West line	County
O	23	24 S	33 E		330	SOUTH	1700	EAST	LEA

¹² Dedicated Acres 320	¹³ Joint or Infill	¹⁴ Consolidation Code	¹⁵ Order No.
---	-------------------------------	----------------------------------	-------------------------

No allowable will be assigned to this completion until all interests have been consolidated or a non-standard unit has been approved by the division.

PP: 800 FNL & 1980 FEL

<p>NW CORNER SEC. 14 LAT. = 32.2248615°N LONG. = 103.5516579°W NMSP EAST (FT) N = 446417.68 E = 783057.59</p> <p>W/4 CORNER SEC. 14 LAT. = 32.2176077°N LONG. = 103.5516536°W NMSP EAST (FT) N = 443778.80 E = 783078.11</p> <p>SECTION CORNER LAT. = 32.2103545°N LONG. = 103.5516507°W NMSP EAST (FT) N = 441140.13 E = 783098.19</p> <p>W/4 CORNER SEC. 23 LAT. = 32.2031048°N LONG. = 103.5516485°W NMSP EAST (FT) N = 438502.76 E = 783118.06</p> <p>SW CORNER SEC. 23 LAT. = 32.1958504°N LONG. = 103.5516422°W NMSP EAST (FT) N = 435863.64 E = 783139.20</p>		<p>N/4 CORNER SEC. 14 LAT. = 32.2248687°N LONG. = 103.5431322°W NMSP EAST (FT) N = 446439.59 E = 785694.08</p> <p>BOOMSLANG 14-23 FED 4H ELEV. = 3601.9' LAT. = 32.2243151°N (NAD83) LONG. = 103.5408432°W NMSP EAST (FT) N = 446243.43 E = 786403.41</p> <p>SEC. 14</p> <p>QUARTER CORNER SCALED</p> <p>NOTE: LATITUDE AND LONGITUDE COORDINATES ARE SHOWN USING THE NORTH AMERICAN DATUM OF 1983 (NAD83). LISTED NEW MEXICO STATE PLANE EAST COORDINATES ARE GRID (NAD83). BASIS OF BEARING AND DISTANCES USED ARE NEW MEXICO STATE PLANE EAST COORDINATES MODIFIED TO THE SURFACE.</p> <p>SEC. 23</p> <p>BOTTOM OF HOLE LAT. = 32.1967558°N LONG. = 103.5400809°W NMSP EAST (FT) N = 436219.21 E = 786713.14</p> <p>S/4 CORNER SEC. 23 LAT. = 32.1958491°N LONG. = 103.5431170°W NMSP EAST (FT) N = 435882.44 E = 785776.38</p> <p>BOTTOM OF HOLE LAT. = 32.1967558°N LONG. = 103.5400809°W NMSP EAST (FT) N = 436219.21 E = 786713.14</p>		<p>NE CORNER SEC. 14 LAT. = 32.2248541°N LONG. = 103.5348036°W NMSP EAST (FT) N = 446453.81 E = 788331.50</p> <p>E/4 CORNER SEC. 14 LAT. = 32.2176222°N LONG. = 103.5346000°W NMSP EAST (FT) N = 443822.86 E = 788352.19</p> <p>SECTION CORNER LAT. = 32.2103608°N LONG. = 103.5345930°W NMSP EAST (FT) N = 441181.22 E = 788373.97</p> <p>E/4 CORNER SEC. 23 LAT. = 32.2031101°N LONG. = 103.5345876°W NMSP EAST (FT) N = 438543.46 E = 788395.26</p> <p>SE CORNER SEC. 23 LAT. = 32.1958483°N LONG. = 103.5345863°W NMSP EAST (FT) N = 435901.64 E = 788415.27</p>	
--	--	---	--	--	--

17 OPERATOR CERTIFICATION

I hereby certify that the information contained herein is true and complete to the best of my knowledge and belief, and that this organization either owns a working interest or unleased mineral interest in the land including the proposed bottom hole location or has a right to drill this well at this location pursuant to a contract with an owner of such a mineral or working interest, or to a voluntary pooling agreement or a completion pooling order heretofore entered by the division.

Signature: *David H. Cook* Date: **12/11/2015**

Printed Name: **David H. Cook**

E-mail Address: **david.cook@dvn.com**

18 SURVEYOR CERTIFICATION

I hereby certify that the well location shown on this plat was plotted from field notes of actual surveys made by me or under my supervision, and that the same is true and correct to the best of my belief.

DECEMBER 9, 2015

Date of Survey: **DECEMBER 9, 2015**

Signature and Seal of Professional Surveyor: *FILMON F. JARAMILLO*

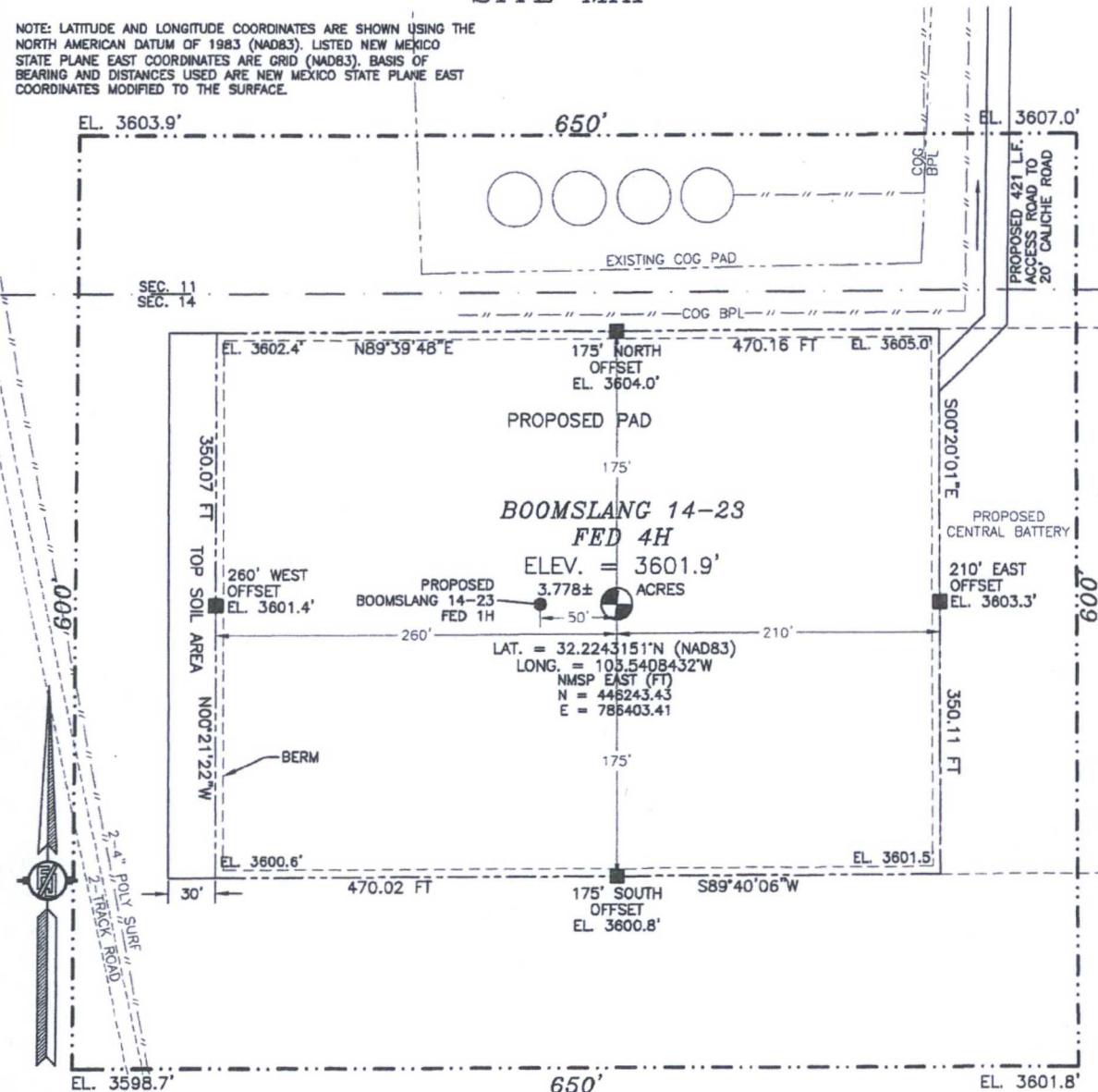
Certificate Number: **FILMON F. JARAMILLO, PLS 12797**

SURVEY NO. 3463C

JAN 25 2016

JAN 19 2018

NOTE: LATITUDE AND LONGITUDE COORDINATES ARE SHOWN USING THE NORTH AMERICAN DATUM OF 1983 (NAD83). LISTED NEW MEXICO STATE PLANE EAST COORDINATES ARE GRID (NAD83). BASIS OF BEARING AND DISTANCES USED ARE NEW MEXICO STATE PLANE EAST COORDINATES MODIFIED TO THE SURFACE.



010 50 100 200

SCALE 1" = 100'

DIRECTIONS TO LOCATION

DIRECTIONS TO LOCATION

FROM STATE HWY. 128 AND CR. J2 (BRINSTOOL) GO NORTH ON J2 0.85 MILES, TURN RIGHT AND GO EAST 0.5 MILES, BEND LEFT AND GO NORTH 0.25 MILES, TURN RIGHT AND GO EAST 1.15 MILES TO A PROPOSED ROAD SURVEY AND FOLLOW FLAGS SOUTH 370' THEN SOUTH-SOUTHWEST 51' TO THE PROPOSED NORTHEAST PAD CORNER FOR THIS LOCATION

DEVON ENERGY PRODUCTION COMPANY, L.P.

BOOMSLANG 14-23 FED 4H

LOCATED 200 FT. FROM THE NORTH LINE
AND 1930 FT. FROM THE EAST LINE OF
SECTION 14, TOWNSHIP 24 SOUTH,
RANGE 33 EAST, N.M.P.M.
LEA COUNTY, STATE OF NEW MEXICO

DECEMBER 9, 2015

SURVEY NO. 3463C

MADRON SURVEYING, INC.

301 SOUTH CANAL
(575) 234-3341

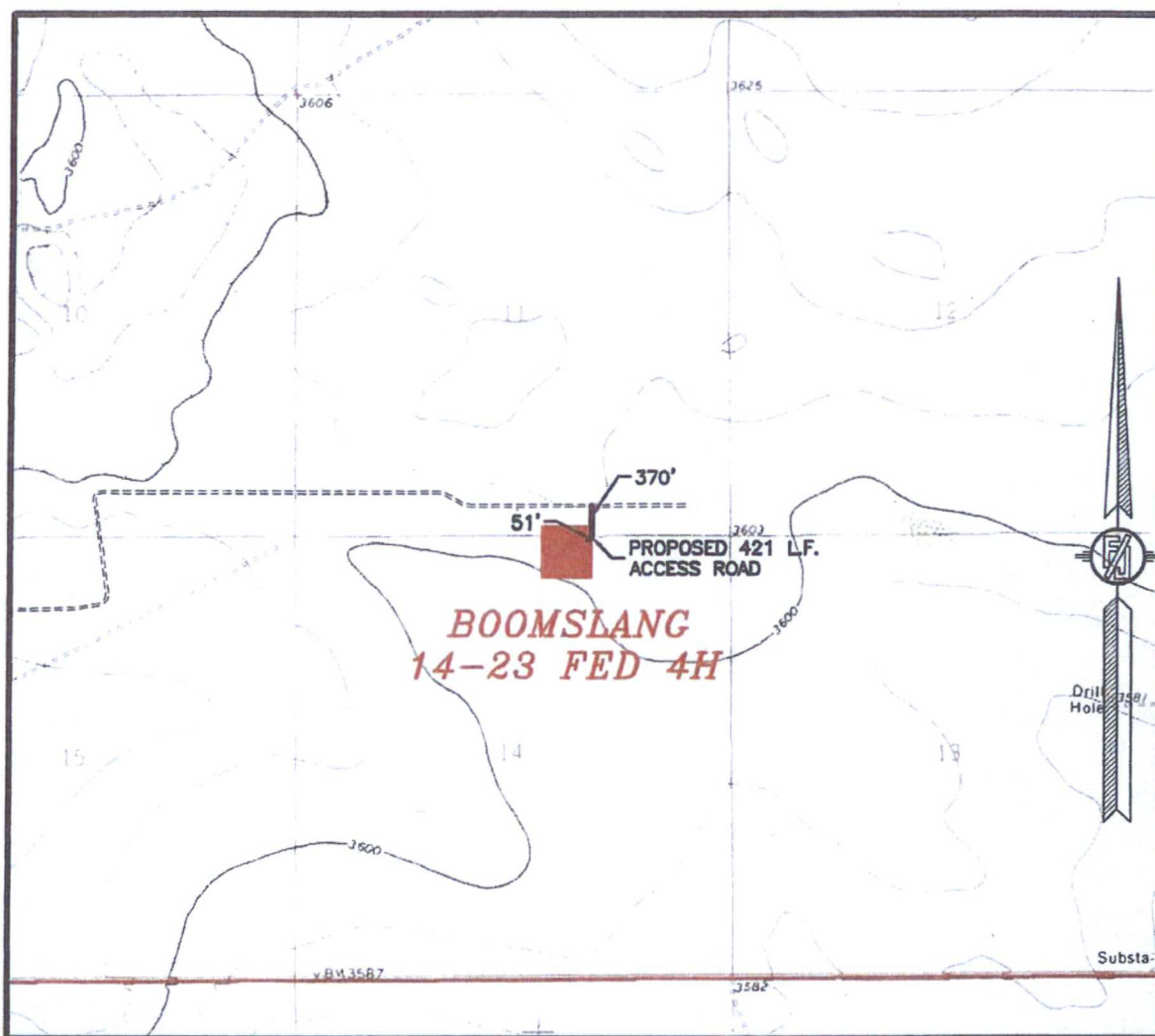
CARLSBAD, NEW MEXICO

HOESBS OCD

JAN 13 2016

RECEIVED

SECTION 14, TOWNSHIP 24 SOUTH, RANGE 33 EAST, N.M.P.M.
LEA COUNTY, STATE OF NEW MEXICO
LOCATION VERIFICATION MAP



USGS QUAD MAP:
BELL LAKE

NOT TO SCALE

DEVON ENERGY PRODUCTION COMPANY, L.P.
BOOMSLANG 14-23 FED 4H
LOCATED 200 FT. FROM THE NORTH LINE
AND 1930 FT. FROM THE EAST LINE OF
SECTION 14, TOWNSHIP 24 SOUTH,
RANGE 33 EAST, N.M.P.M.
LEA COUNTY, STATE OF NEW MEXICO

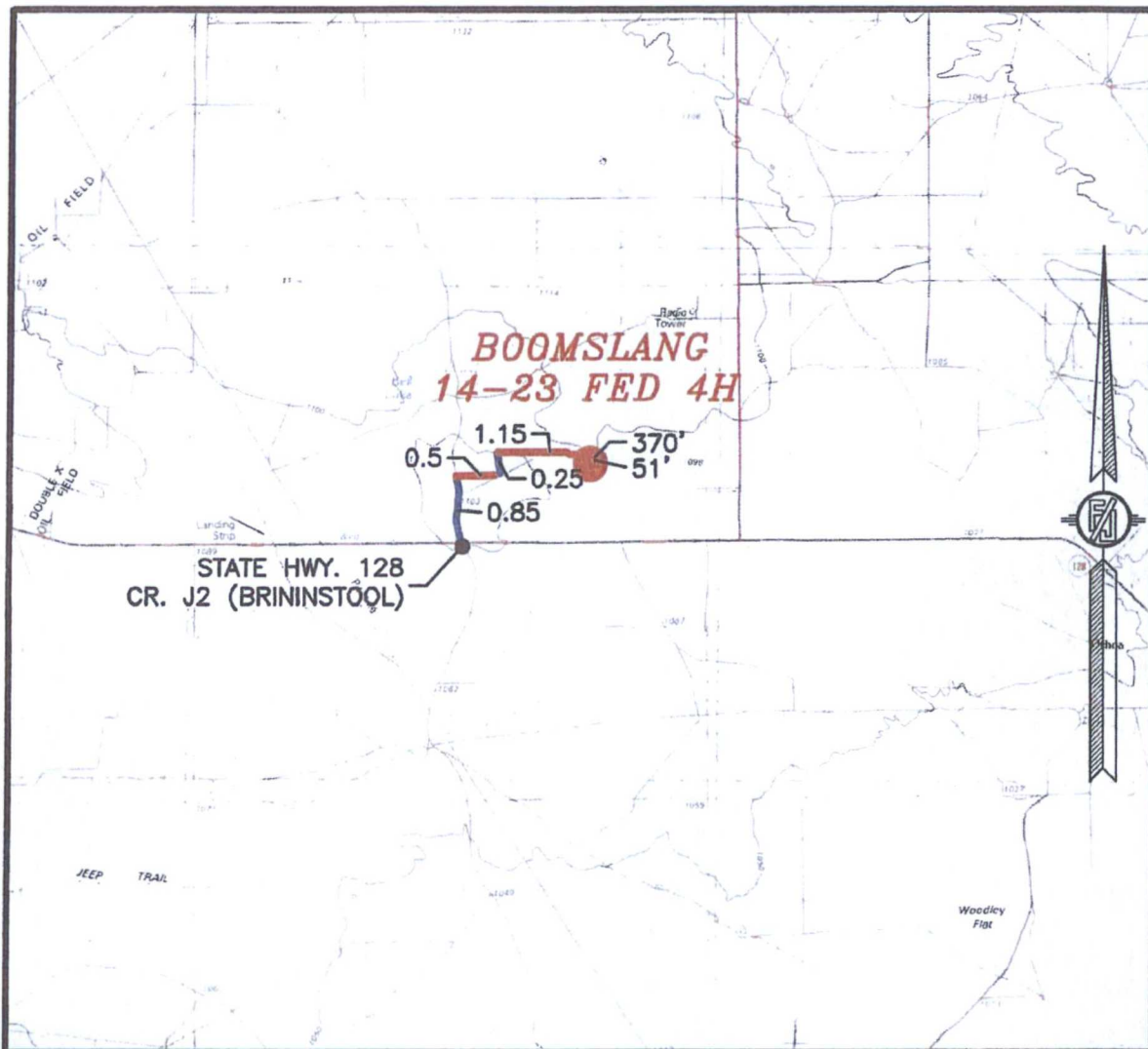
DECEMBER 9, 2015

MADRON SURVEYING, INC. 301 SOUTH CANAL (575) 234-3341 CARLSBAD, NEW MEXICO

SURVEY NO. 3463C

HOBBS OCD
JAN 19 2016
RECEIVED

SECTION 14, TOWNSHIP 24 SOUTH, RANGE 33 EAST, N.M.P.M.
LEA COUNTY, STATE OF NEW MEXICO
VICINITY MAP



DISTANCES IN MILES

NOT TO SCALE

DIRECTIONS TO LOCATION

FROM STATE HWY. 128 AND CR. J2 (BRINSTOOL) GO NORTH ON J2 0.85 MILES, TURN RIGHT AND GO EAST 0.5 MILES, BEND LEFT AND GO NORTH 0.25 MILES, TURN RIGHT AND GO EAST 1.15 MILES TO A PROPOSED ROAD SURVEY AND FOLLOW FLAGS SOUTH 370' THEN SOUTH-SOUTHWEST 51' TO THE PROPOSED NORTHEAST PAD CORNER FOR THIS LOCATION

DEVON ENERGY PRODUCTION COMPANY, L.P.

BOOMSLANG 14-23 FED 4H

LOCATED 200 FT. FROM THE NORTH LINE
AND 1930 FT. FROM THE EAST LINE OF
SECTION 14, TOWNSHIP 24 SOUTH,
RANGE 33 EAST, N.M.P.M.
LEA COUNTY, STATE OF NEW MEXICO

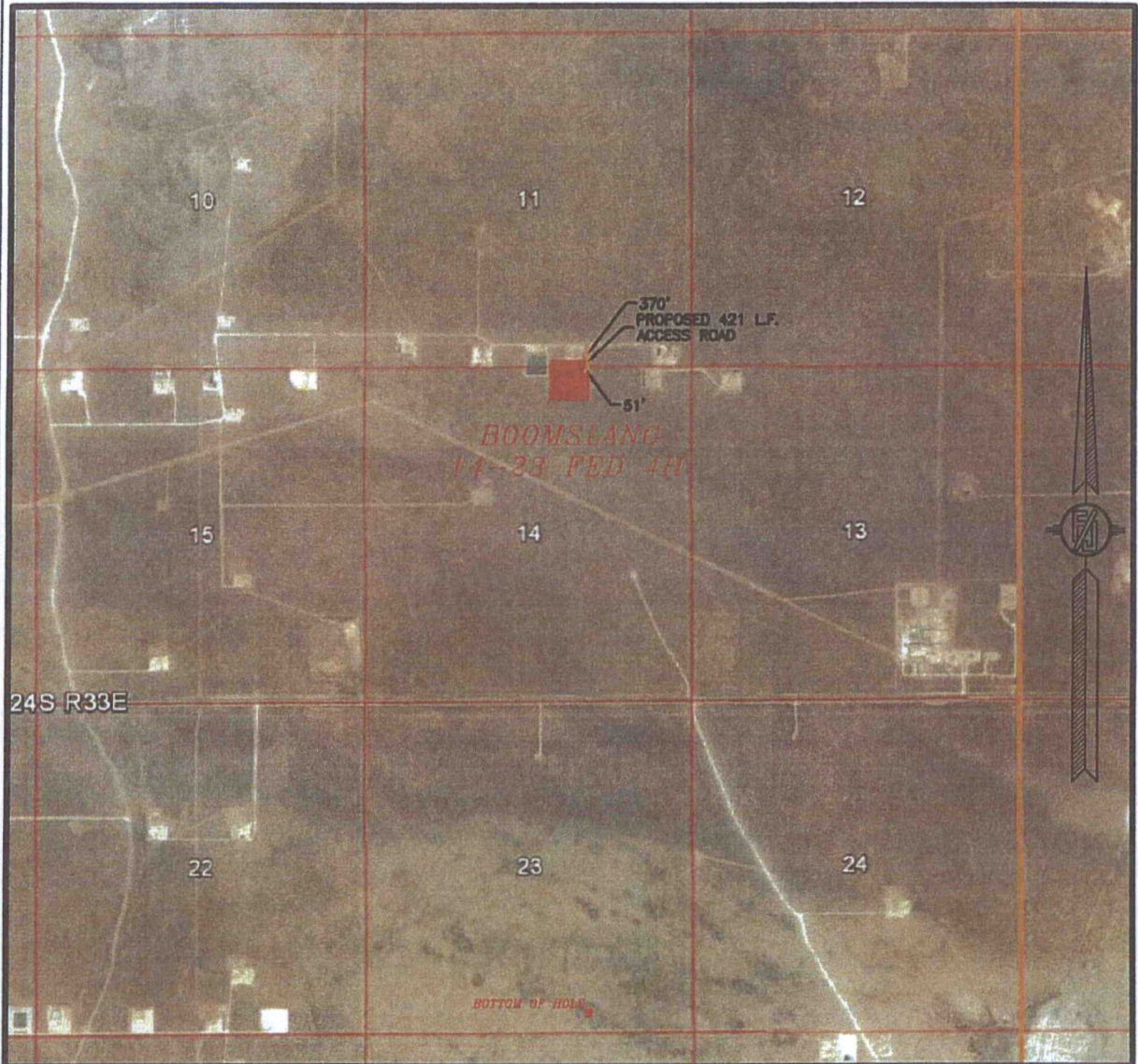
DECEMBER 9, 2015

SURVEY NO. 3463C

MADRON SURVEYING, INC. 301 SOUTH CANAL CARLSBAD, NEW MEXICO
(575) 234-3341

HOBBS OCD
JAN 19 2016
RECEIVED

SECTION 14, TOWNSHIP 24 SOUTH, RANGE 33 EAST,
LEA COUNTY, STATE OF NEW MEXICO
AERIAL PHOTO



NOT TO SCALE
AERIAL PHOTO:
GOOGLE EARTH
FEB. 2014

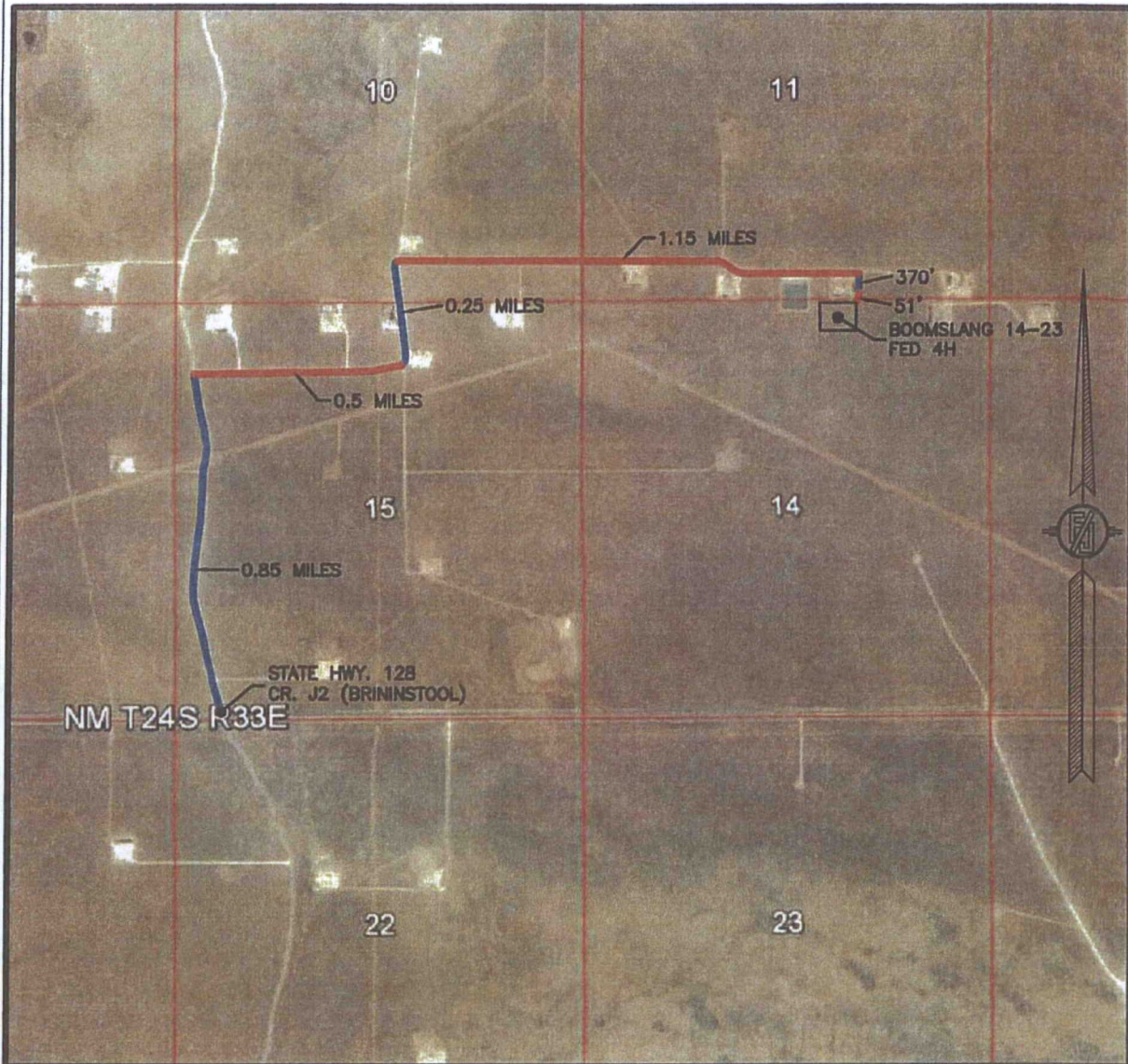
DEVON ENERGY PRODUCTION COMPANY, L.P.
BOOMSLANG 14-23 FED 4H
LOCATED 200 FT. FROM THE NORTH LINE
AND 1930 FT. FROM THE EAST LINE OF
SECTION 14, TOWNSHIP 24 SOUTH,
RANGE 33 EAST, N.M.P.M.
LEA COUNTY, STATE OF NEW MEXICO

DECEMBER 9, 2015

SURVEY NO. 3463C

MADRON SURVEYING, INC. 301 SOUTH CANAL (575) 234-3341 CARLSBAD, NEW MEXICO

SECTION 14, TOWNSHIP 24 SOUTH, RANGE 33 EAST,
LEA COUNTY, STATE OF NEW MEXICO
AERIAL ACCESS ROUTE MAP



NOT TO SCALE
AERIAL PHOTO:
GOOGLE EARTH
FEB. 2014

DEVON ENERGY PRODUCTION COMPANY, L.P.
BOOMSLANG 14-23 FED 4H
LOCATED 200 FT. FROM THE NORTH LINE
AND 1930 FT. FROM THE EAST LINE OF
SECTION 14, TOWNSHIP 24 SOUTH,
RANGE 33 EAST, N.M.P.M.
LEA COUNTY, STATE OF NEW MEXICO

DECEMBER 9, 2015

SURVEY NO. 3463C

MADRON SURVEYING, INC. 301 SOUTH CANAL (575) 234-3341 CARLSBAD, NEW MEXICO