

DISTRICT I  
1625 N. French Dr., Hobbs, NM 88240  
Phone (575) 393-8161 Fax: (575) 393-0720

DISTRICT II  
811 S. First St., Artesia, NM 88210  
Phone (575) 748-1283 Fax: (575) 748-9720

DISTRICT III  
1000 Rio Brazos Rd., Aztec, NM 87410  
Phone (505) 334-6178 Fax: (505) 334-6170

DISTRICT IV  
1220 S. St. Francis Dr., Santa Fe, NM 87505  
Phone (505) 476-3460 Fax: (505) 476-3462

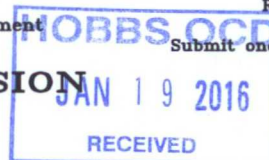
State of New Mexico  
Energy, Minerals and Natural Resources Department

OIL CONSERVATION DIVISION

1220 South St. Francis Dr.  
Santa Fe, New Mexico 87505

Form C-102  
Revised August 12, 2011

Submit one copy to appropriate  
District Office



WELL LOCATION AND ACREAGE DEDICATION PLAT

☐ AMENDED REPORT

| API Number     | Pool Code                   | Pool Name               |
|----------------|-----------------------------|-------------------------|
| 30-025-43016 ✓ | 53800                       | Sand Dunes; Bone Spring |
| Property Code  | Property Name               | Well Number             |
| 12519          | LOTUS ALT STATE             | 13H ✓                   |
| OGRID No.      | Operator Name               | Elevation               |
| 025575         | YATES PETROLEUM CORPORATION | 3550' ✓                 |

Surface Location

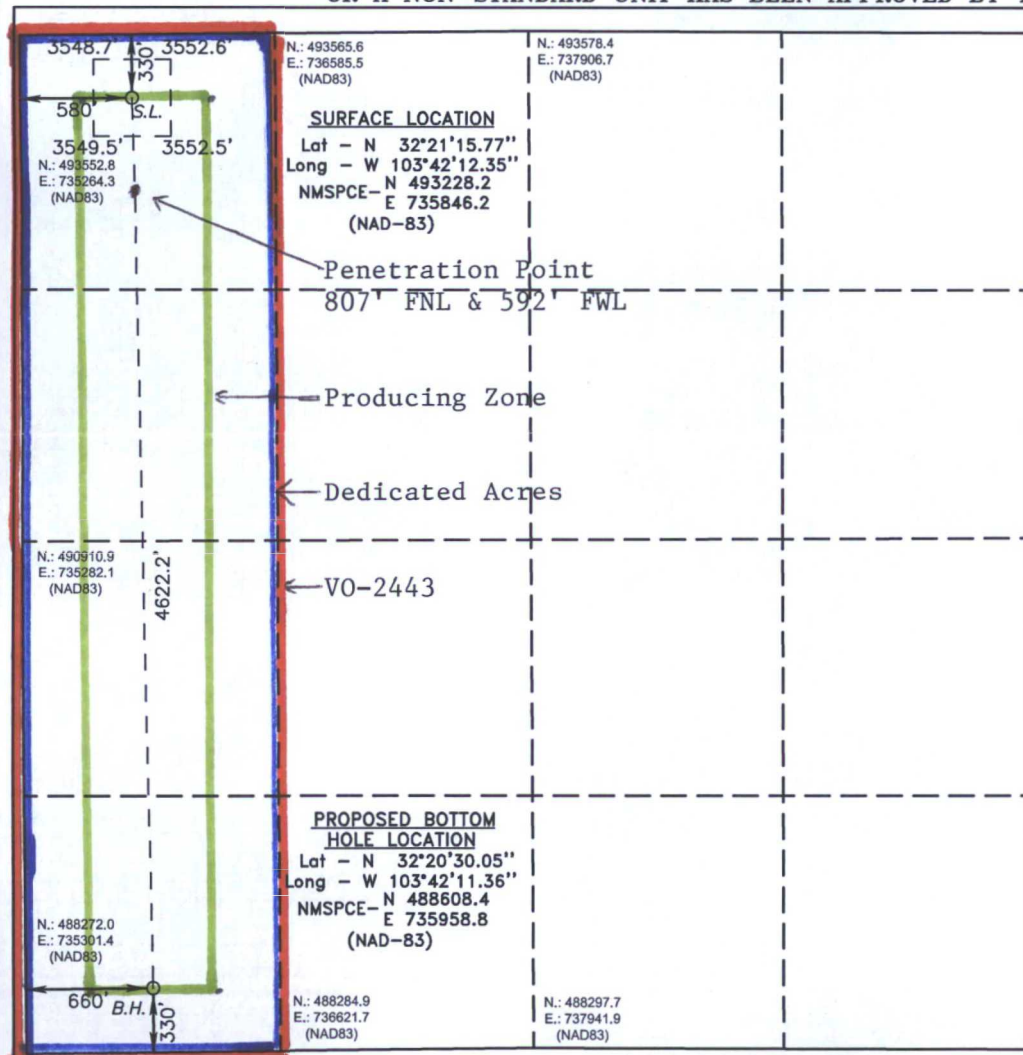
| UL or lot No. | Section | Township | Range | Lot Idn | Feet from the | SOUTH/South line | Feet from the | East/West line | County |
|---------------|---------|----------|-------|---------|---------------|------------------|---------------|----------------|--------|
| D             | 32      | 22 S     | 32 E  |         | 330           | NORTH            | 580           | WEST           | LEA ✓  |

Bottom Hole Location If Different From Surface

| UL or lot No. | Section | Township | Range | Lot Idn | Feet from the | SOUTH/South line | Feet from the | East/West line | County |
|---------------|---------|----------|-------|---------|---------------|------------------|---------------|----------------|--------|
| M             | 32      | 22 S     | 32 E  |         | 330           | SOUTH            | 660           | WEST           | LEA    |

| Dedicated Acres | Joint or Infill | Consolidation Code | Order No. |
|-----------------|-----------------|--------------------|-----------|
| 160.00          |                 |                    |           |

NO ALLOWABLE WILL BE ASSIGNED TO THIS COMPLETION UNTIL ALL INTERESTS HAVE BEEN CONSOLIDATED  
OR A NON-STANDARD UNIT HAS BEEN APPROVED BY THE DIVISION



OPERATOR CERTIFICATION

I hereby certify that the information contained herein is true and complete to the best of my knowledge and belief, and that this organization either owns a working interest or unleased mineral interest in the land including the proposed bottom hole location or has a right to drill this well at this location pursuant to a contract with an owner of such a mineral or working interest, or to a voluntary pooling agreement or a compulsory pooling order heretofore entered by the division.

Signature \_\_\_\_\_ Date \_\_\_\_\_

Cy Cowan

Printed Name

Cy@yatespetroleum.com

Email Address

SURVEYOR CERTIFICATION

I hereby certify that the well location shown on this plat was plotted from field notes of actual surveys made by me or under my supervision, and that the same is true and correct to the best of my belief.

SEPTEMBER 2, 2015

Date Surveyed

Signature & Seal of  
Professional Surveyor

Certificate No. 7977

Basin Survey

0' 500' 1000' 1500' 2000'

SCALE: 1" = 2000'

WO Num.: 31905

# Lotus ALT State #13H

