



Midwest Hose  
& Specialty, Inc.

Exhibit F-1 - Co-Flex Hose Hydrostatic Test  
Lea South 25 Federal Com #11H 201

Nearburg Producing Co. RECEIVED  
25-20S-34E

SHL 330 FSL& 1830 FEL

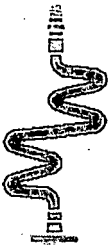
BHL 330 FNL & 1680 FEL

Lea County, NM

### INTERNAL HYDROSTATIC TEST REPORT

Customer: Oderco Inc		P.O. Number: odyd-271	
HOSE SPECIFICATIONS			
Type: Stainless Steel Armor Choke & Kill Hose		Hose Length: 45'ft.	
I.D. 4 INCHES		O.D. 9 INCHES	
WORKING PRESSURE 10,000 PSI	TEST PRESSURE 15,000 PSI		BURST PRESSURE 0 PSI
COUPLINGS			
Stem Part No. OKC OKC		Ferrule No. OKC OKC	
Type of Coupling: Swage-It			
PROCEDURE			
<u>Hose assembly pressure tested with water at ambient temperature.</u>			
TIME HELD AT TEST PRESSURE 15 MIN.		ACTUAL BURST PRESSURE: 0 PSI	
Hose Assembly Serial Number: 79793		Hose Serial Number: OKC	
Comments:			
Date: 3/8/2011	Tested: <i>A. James</i>		Approved: <i>David</i>

JAN 27 2016



Midwest Hose  
& Specialty, Inc.

## Internal Hydrostatic Test Graph

Customer: Houston

Pick Ticket #: 94260

March 3, 2011

### Hose Specifications

Hose Type

C&K

Length

45'

I.D.

4"

O.D.

6.08"

### Verification

Type of Fittings

4 1/16 10K

Coupling Method

Swage

Die Size

6.38"

Final O.D.

6.25"

Hose Serial #

5504

Hose Assembly Serial #

79793

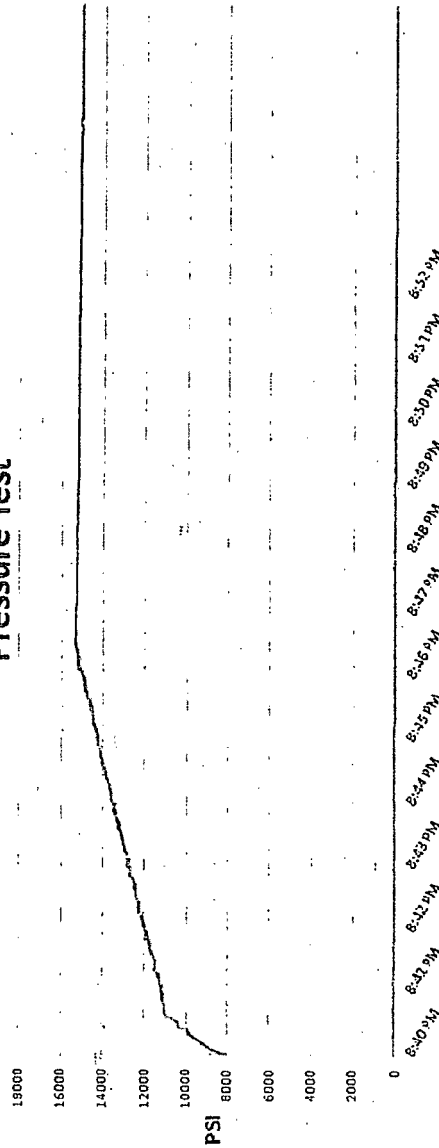
Working Pressure

10000 PSI

Burst Pressure

Standard Safety Multiplier Applies

## Pressure Test



Test Pressure  
15000 PSI

Time Held at Test Pressure  
11 Minutes

Actual Burst Pressure

Peak Pressure  
15483 PSI

Comments: Hose assembly pressure tested with water at ambient temperature.

Tested By: Zac McConnell

Approved By: Kim Thomas

Exhibit F-2 - Co-Flex Hose  
Lea South 25 Federal Com #11H  
Nearburg Producing Co.  
25-20S-34E  
SHL 330 FSL& 1830 FEL  
BHL 330 FNL & 1680 FEL  
Lea County, NM



## Midwest Hose & Specialty, Inc.

### Certificate of Conformity

<b>Customer:</b>		<b>PO</b>
DEM		ODYD-271
<b>SPECIFICATIONS</b>		
<b>Sales Order</b>	<b>Dated:</b>	
79793	3/8/2011	
<p>We hereby certify that the material supplied for the referenced purchase order to be true according to the requirements of the purchase order and current industry standards</p> <p>Supplier: Midwest Hose &amp; Specialty, Inc. 10640 Tanner Road Houston, Texas 77041</p>		
<b>Comments:</b>		
<b>Approved:</b> <i>Samuel Garcia</i>		<b>Date:</b> 3/8/2011



Midwest Hose  
& Specialty, Inc.

Exhibit F -3- Co-Flex Hose  
Lea South 25 Federal Com #11H  
Nearburg Producing Co.  
25-20S-34E  
SHL 330 FSL & 1830 FEL  
BHL 330 FNL & 1680 FEL  
Lea County, NM

## Specification Sheet Choke & Kill Hose

The Midwest Hose & Specialty Choke & Kill hose is manufactured with only premium componets. The reinforcement cables, inner liner and cover are made of the highest quality material to handle the tough drilling applications of today's industry. The end connections are available with API flanges, API male threads, hubs, hammer unions or other special fittings upon request. Hose assembly is manufactured to API 7K. This assembly is wrapped with fire resistant vermiculite coated fiberglass insulation, rated at 2000 degrees with stainless steel armor cover.

<b>Working Pressure:</b>	5,000 or 10,000 psi working pressure
<b>Test Pressure:</b>	10,000 or 15,000 psi test pressure
<b>Reinforcement:</b>	Multiple steel cables
<b>Cover:</b>	Stainless Steel Armor
<b>Inner Tube:</b>	Petroleum resistant, Abrasion resistant
<b>End Fitting:</b>	API flanges, API male threads, threaded or butt weld hammer unions, unbolt and other special connections
<b>Maximum Length:</b>	110 Feet
<b>ID:</b>	2-1/2", 3", 3-1/2", 4"
<b>Operating Temperature:</b>	-22 deg F to +180 deg F (-30 deg C to +82 deg C)

Exhibit F – Co-Flex Hose  
**Lea South 25 Federal Com #11H**  
Nearburg Producing Co.  
25-20S-34E  
SHL 330 FSL& 1830 FEL  
BHL 330 FNL & 1680 FEL  
Lea County, NM



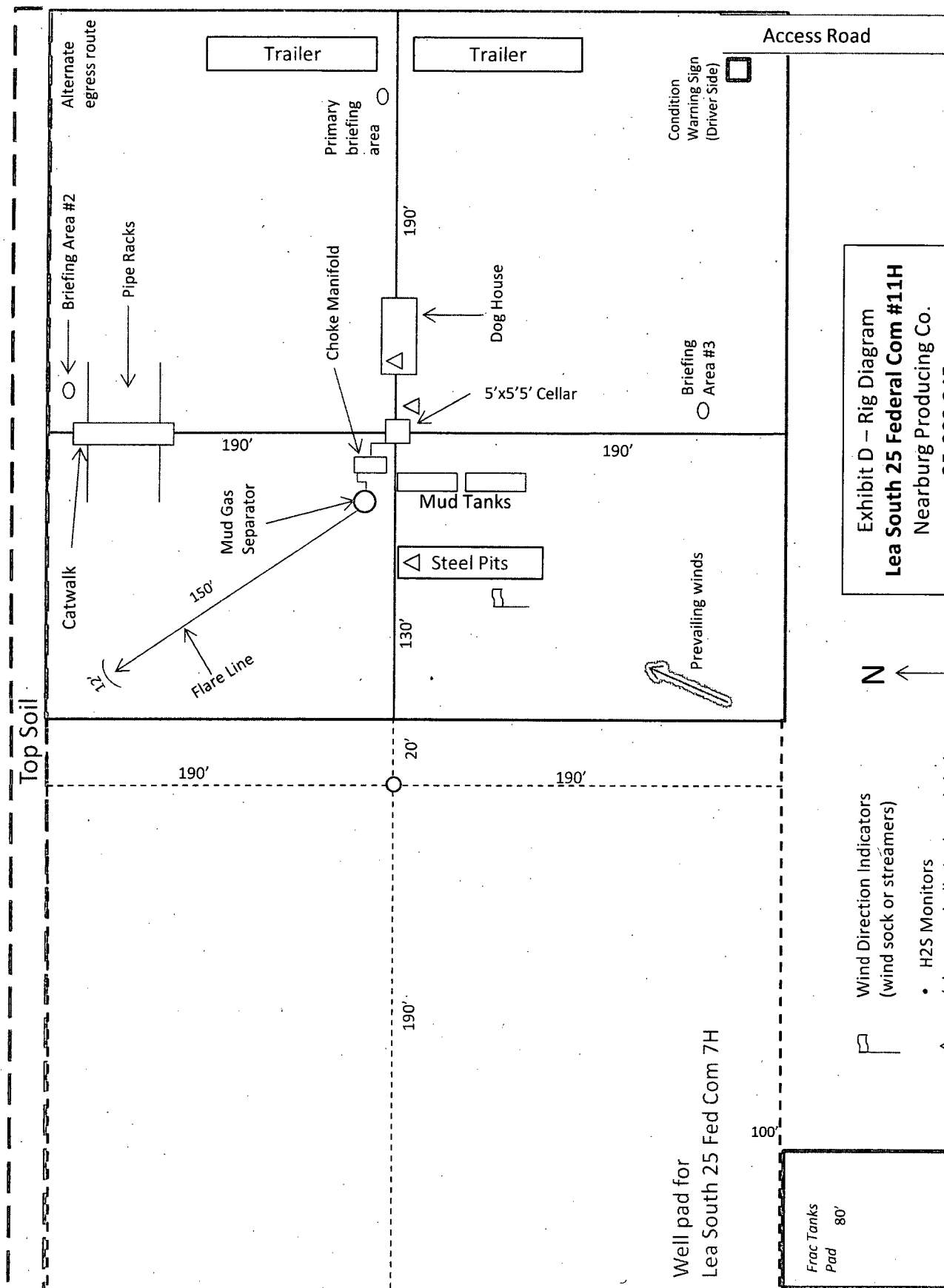


Exhibit D – Rig Diagram  
**Lea South 25 Federal Com #11H**  
 Nearburg Producing Co.  
 25-20S-34E  
 SHL 330 FSL& 1830 FEL  
 BHL 330 FNL & 1680 FEL  
 Lea County, NM



- Wind Direction Indicators  
 (wind sock or streamers)
- H2S Monitors  
 (alarms at bell nipple and shale shaker)
  - △ Briefing Areas