

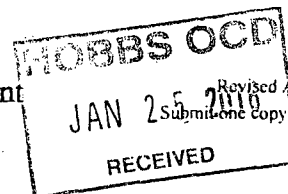
DISTRICT I  
1625 N. French Dr., Hobbs, NM 88240  
Phone: (575) 393-6161 Fax: (575) 393-0720

DISTRICT II  
811 S. First St., Artesia, NM 88210  
Phone: (575) 748-1283 Fax: (575) 748-9720

DISTRICT III  
1000 Rio Brazos Road, Aztec, NM 87410  
Phone: (505) 334-6178 Fax: (505) 334-6170

DISTRICT IV  
1230 S. St. Francis Dr., Santa Fe, NM 87505  
Phone: (505) 476-3460 Fax: (505) 476-3462

State of New Mexico  
Energy, Minerals & Natural Resources Department  
OIL CONSERVATION DIVISION  
1220 South St. Francis Dr.  
Santa Fe, New Mexico 87505



Form C-102  
Revised August 1, 2011  
Submit one copy to appropriate District Office

DAMENDED REPORT

WELL LOCATION AND ACREAGE DEDICATION PLAT

API Number <b>30-025-43033</b>	Pool Code <b>5150</b>	Pool Name <b>BELL LAKE; BS, NORTH</b>
Property Code <b>315948</b>	Property Name <b>NORTH BELL LAKE UNIT 6 2BSS</b>	Well Number <b>1H</b>
OGRID No. <b>12361</b>	Operator Name <b>KAISER-FRANCIS OIL COMPANY</b>	Elevation <b>3456'</b>

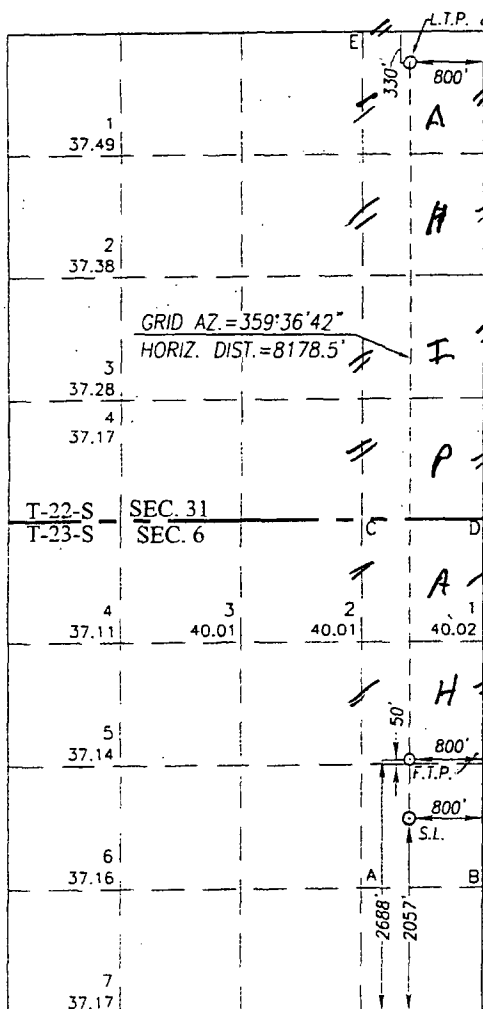
Surface Location

UL or lot No.	Section	Township	Range	Lot Idn	Feet from the	North/South line	Feet from the	East/West line	County
I	6	23-S	34-E		2057	SOUTH	800	EAST	LEA

Last Take Point & Bottom Hole Location If Different From Surface

UL or lot No.	Section	Township	Range	Lot Idn	Feet from the	North/South line	Feet from the	East/West line	County
A	31	22-S	34-E		330	NORTH	800	EAST	LEA
Dedicated Acres <b>240</b>	Joint or Infill	Consolidation Code	Order No.						

NO ALLOWABLE WILL BE ASSIGNED TO THIS COMPLETION UNTIL ALL INTERESTS HAVE BEEN CONSOLIDATED OR A NON-STANDARD UNIT HAS BEEN APPROVED BY THE DIVISION



SCALE: 1"=2000'

GEODETIC COORDINATES  
NAD 83 NME  
LAST TAKE POINT &  
BOTTOM HOLE LOCATION  
Y = 493697.1 N  
X = 797654.5 E  
LAT. = 32.354512° N  
LONG. = 103.503275° W

GEODETIC COORDINATES  
NAD 27 NME  
LAST TAKE POINT &  
BOTTOM HOLE LOCATION  
Y = 493636.9 N  
X = 756471.5 E  
LAT. = 32.354389° N  
LONG. = 103.502794° W

CORNER COORDINATES TABLE

NAD 27 NME  
A - Y = 484719.1 N, X = 756012.2 E  
B - Y = 484728.3 N, X = 757332.2 E  
C - Y = 488681.9 N, X = 755982.3 E  
D - Y = 488692.5 N, X = 757302.5 E  
E - Y = 493962.7 N, X = 755950.1 E  
F - Y = 493973.3 N, X = 757269.2 E

CORNER COORDINATES TABLE

NAD 83 NME  
A - Y = 484779.0 N, X = 797195.4 E  
B - Y = 484788.2 N, X = 798515.4 E  
C - Y = 488741.9 N, X = 797165.5 E  
D - Y = 488752.5 N, X = 798485.7 E  
E - Y = 494022.9 N, X = 797133.1 E  
F - Y = 494033.4 N, X = 798452.2 E

GEODETIC COORDINATES  
FIRST TAKE POINT  
NAD 83 NME  
Y = 486151.6 N  
X = 797705.6 E  
LAT. = 32.333772° N  
LONG. = 103.503299° W

GEODETIC COORDINATES  
FIRST TAKE POINT  
NAD 27 NME  
Y = 486091.6 N  
X = 756522.5 E  
LAT. = 32.333648° N  
LONG. = 103.502818° W

GEODETIC COORDINATES  
SURFACE LOCATION  
NAD 83 NME  
Y = 485520.3 N  
X = 797709.9 E  
LAT. = 32.332037° N  
LONG. = 103.503301° W

GEODETIC COORDINATES  
SURFACE LOCATION  
NAD 27 NME  
Y = 485460.4 N  
X = 756526.7 E  
LAT. = 32.331913° N  
LONG. = 103.502820° W

OPERATOR CERTIFICATION

I hereby certify that the information herein is true and complete to the best of my knowledge and belief, and that this organization either owns a working interest or unleased mineral interest in the land including the proposed bottom hole location or has a right to drill this well at this location pursuant to a contract with an owner of such mineral or working interest, or to a voluntary pooling agreement or a compulsory pooling order heretofore entered by the division.

Signature

Date

Steven A. Dowdy

Printed Name

trimanres@sbcglobal.net

E-mail Address

SURVEYOR CERTIFICATION

I hereby certify that the well location shown on this plat was plotted from field notes of actual surveys made by me or under my supervision, and that the same is true and correct to the best of my belief.

OCTOBER 2, 2015

Date of Survey

Signature & Seal of Professional Surveyor:

Ronald J. Eidson

3239

Ronald J. Eidson

12641

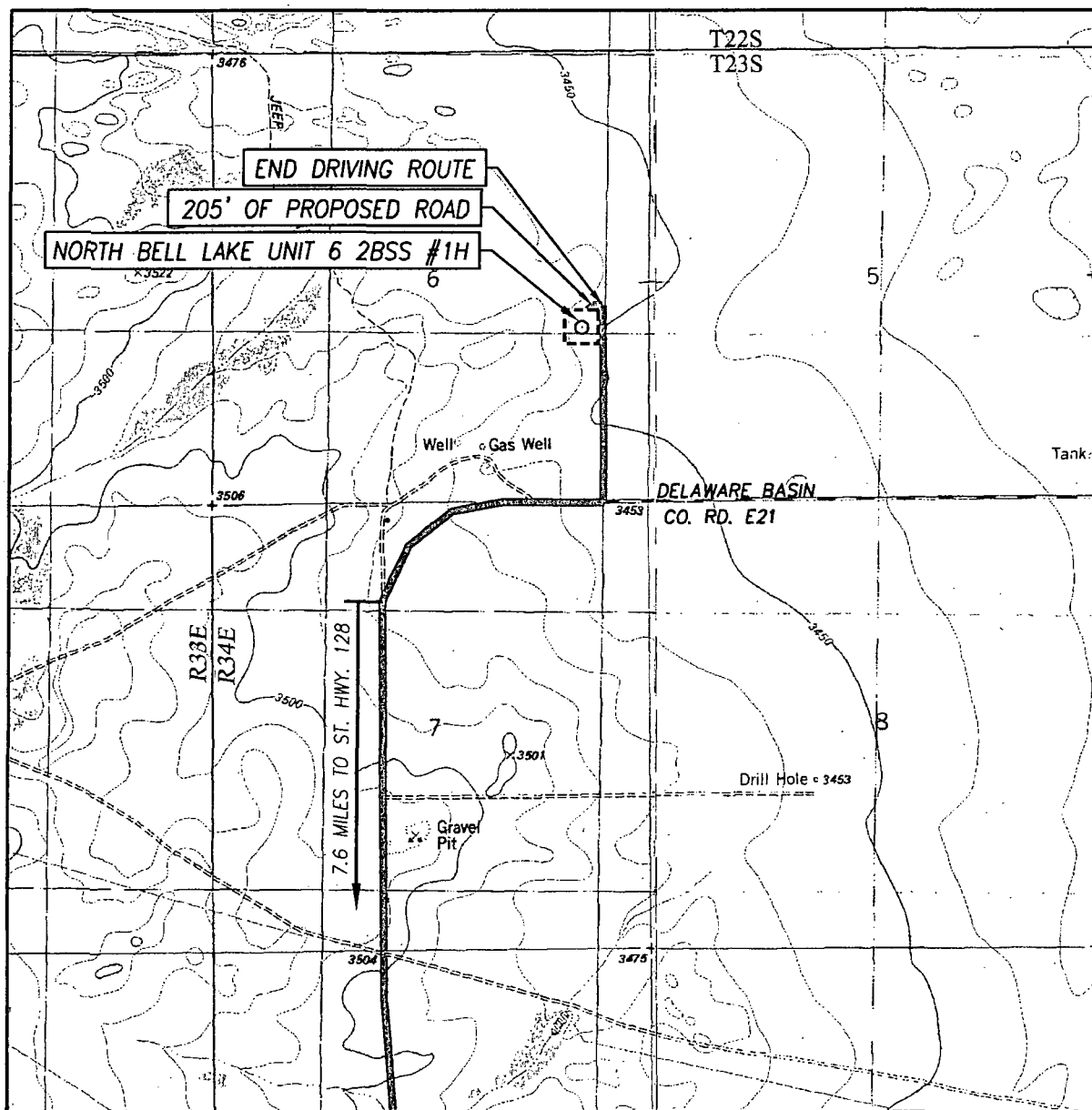
3239

ACK

JWSC W.O.: 15.11.0922

JAN 27 2016

# TOPOGRAPHIC AND ACCESS ROAD MAP



SCALE: 1" = 2000'

CONTOUR INTERVAL:  
SAN SIMON SINK, N.M. - 10'  
TIP TOP WELLS, N.M. - 10'

SEC. 6 TWP. 23-S RGE. 34-E

SURVEY N.M.P.M.

COUNTY LEA STATE NEW MEXICO

DESCRIPTION 2057' FSL & 800' FEL

ELEVATION 3456'

OPERATOR KAISER-FRANCIS OIL COMPANY

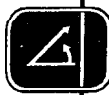
LEASE NORTH BELL LAKE UNIT 6 2BSS

U.S.G.S. TOPOGRAPHIC MAP

TIP TOP WELLS, N.M.

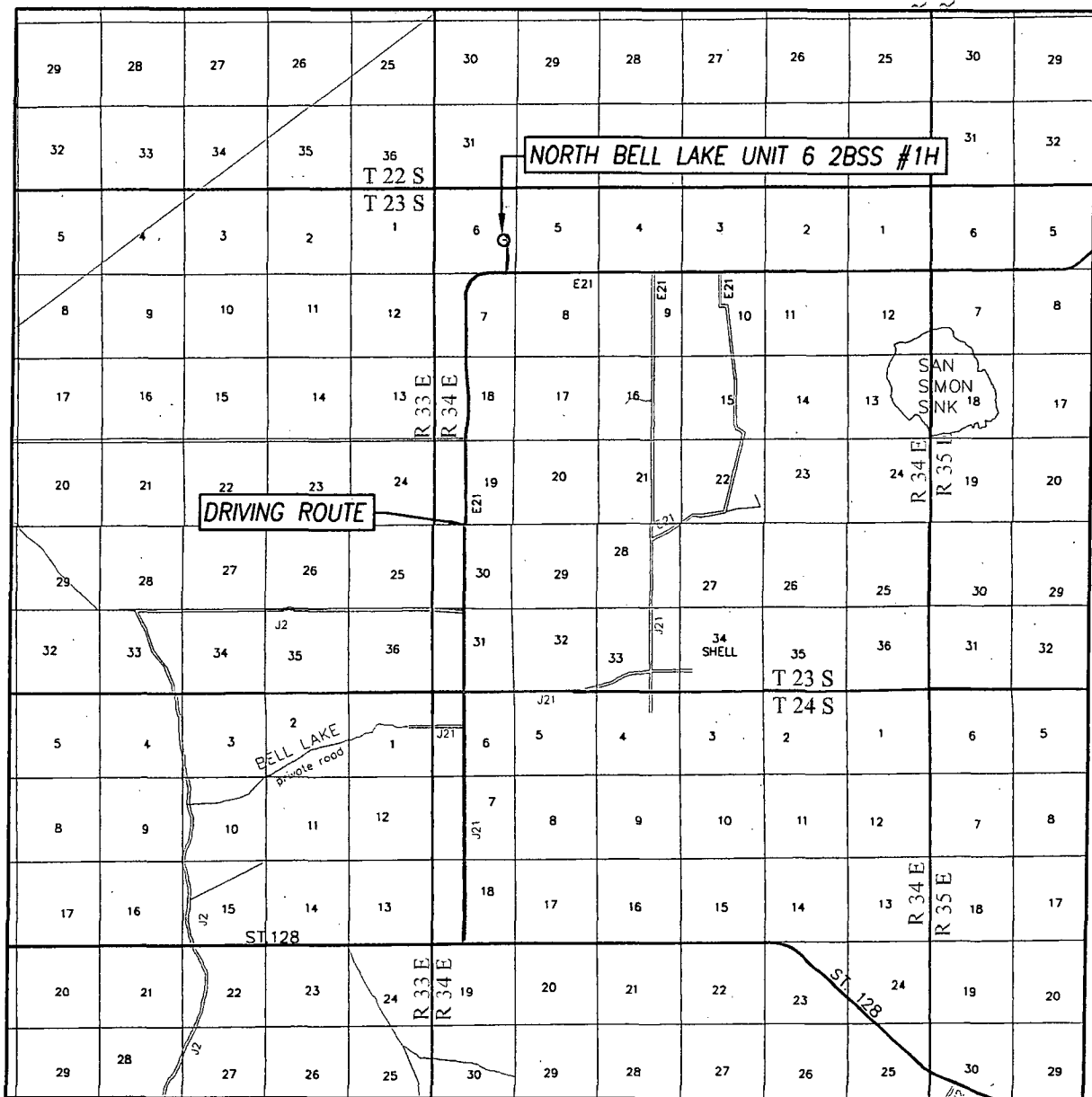
DIRECTIONS TO NORTH BELL LAKE UNIT 6 2BSS #1H:

FROM THE INTERSECTION OF ST. HWY. 128 AND CO. RD. E21 (DELAWARE BASIN RD.), GO NORTH ON CO. RD. E21 APPROX. 7.6 MILES. TO THE BEGINNING OF A CURVE TO THE RIGHT TO THE EAST CONTINUING AN ADDITIONAL 0.5 MILES. TURN LEFT AND GO NORTH APPROX. 0.4 MILES. THE LOCATION IS APPROX. 250 FEET WEST OF ROAD.



PROVIDING SURVEYING SERVICES  
SINCE 1946  
**JOHN WEST SURVEYING COMPANY**  
412 N. DAL PASO HOBBS, N.M. 88240  
(575) 393-3117 [www.jwsc.biz](http://www.jwsc.biz)  
TBPLS# 10021000

# VICINITY MAP



SCALE: 1" = 2 MILES

DRIVING ROUTE: SEE TOPOGRAPHICAL AND ACCESS ROAD MAP

SEC. 6 TWP. 23-S RGE. 34-E

SURVEY N.M.P.M.

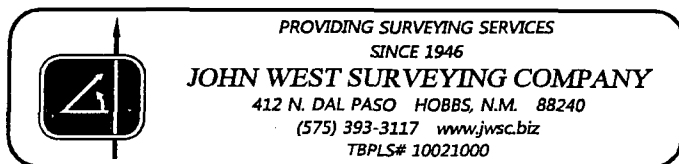
COUNTY LEA STATE NEW MEXICO

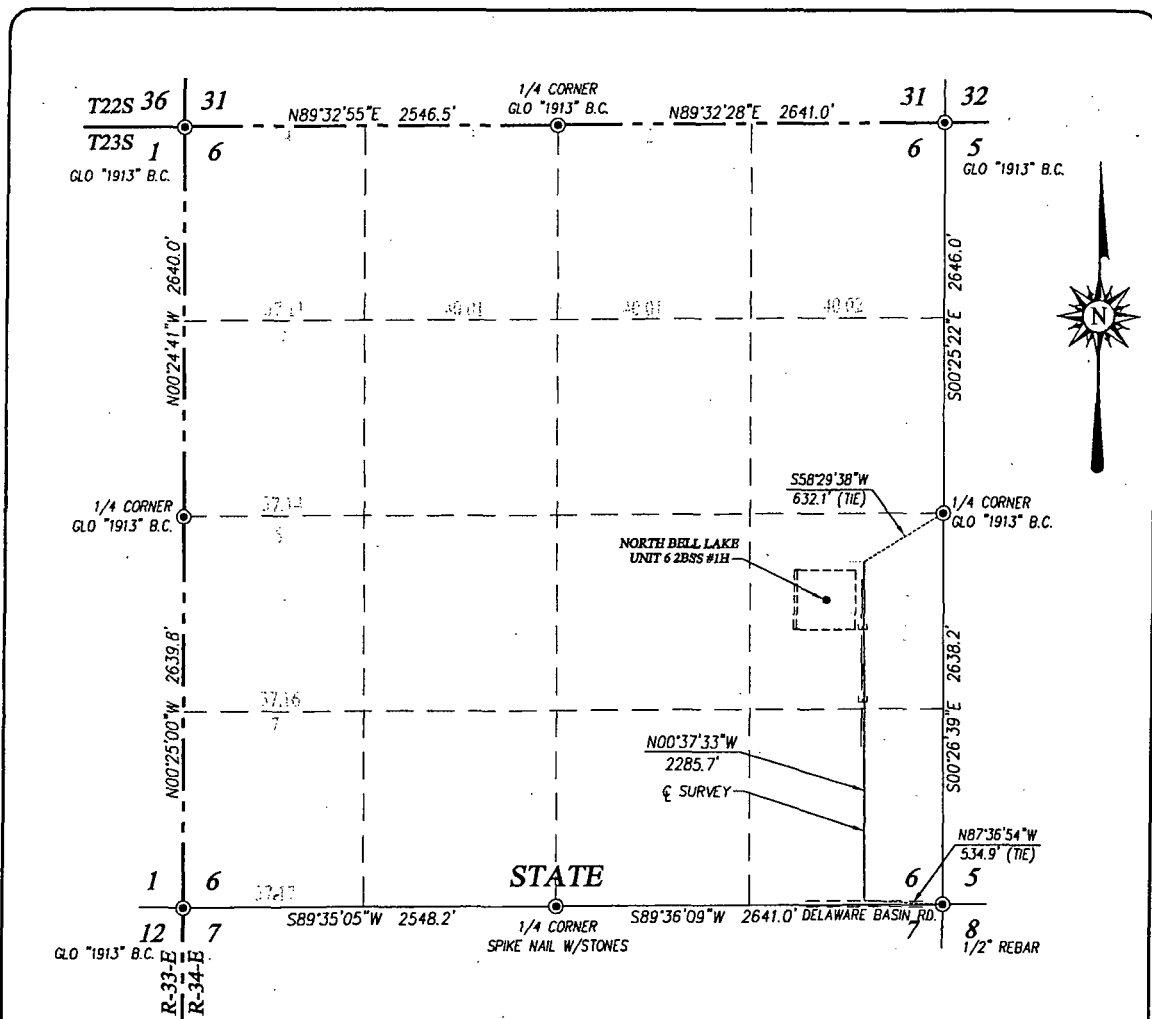
DESCRIPTION 2057' FSL & 800' FEL

ELEVATION 3456'

OPERATOR KAISER-FRANCIS OIL COMPANY

LEASE NORTH BELL LAKE UNIT 6 2BSS





#### DESCRIPTION

A STRIP OF LAND 20.0 FEET WIDE CROSSING STATE OF NEW MEXICO LAND IN SECTION 6, TOWNSHIP 23 SOUTH, RANGE 34 EAST, N.M.P.M., LEA COUNTY, NEW MEXICO, AND BEING 10.0 FEET LEFT AND 10.0 FEET RIGHT OF THE FOLLOWING DESCRIBED CENTERLINE SURVEY:

BEGINNING AT A POINT IN THE SOUTHEAST QUARTER OF THE SOUTHEAST QUARTER OF SAID SECTION 6, WHICH LIES N87°36'54"W 534.9 FEET FROM THE SOUTHEAST CORNER OF SAID SECTION; THEN N00°37'33"W 2285.7 FEET TO A POINT IN THE NORTHEAST QUARTER OF THE SOUTHEAST QUARTER, WHICH LIES S58°29'38"W 631.2 FEET FROM THE EAST QUARTER CORNER OF SAID SECTION.

SAID STRIP OF LAND BEING 2285.7 FEET OR 138.53 RODS IN LENGTH, CONTAINING 1.049 ACRES MORE OR LESS AND BEING ALLOCATED BY FORTIES AS FOLLOWS:

SE/4 SE/4 78.38 RODS OR 0.594 ACRES  
NE/4 SE/4 60.15 RODS OR 0.455 ACRES

#### NOTE

BEARINGS SHOWN HEREON ARE MERCATOR GRID AND CONFORM TO THE NEW MEXICO COORDINATE SYSTEM / NEW MEXICO EAST ZONE NORTH AMERICAN DATUM 1983. DISTANCES ARE SURFACE VALUES.

I, RONALD J. EIDSON, NEW MEXICO PROFESSIONAL SURVEYOR No. 3239, DO HEREBY CERTIFY THAT THIS SURVEY PLAN AND THE ACTUAL SURVEY ON THE GROUND UPON WHICH IT IS BASED WERE PERFORMED BY ME OR UNDER MY DIRECT SUPERVISION; THAT I AM RESPONSIBLE FOR THIS SURVEY; THAT THIS SURVEY MEETS THE MINIMUM STANDARDS FOR SURVEYING IN NEW MEXICO, AND THAT THIS SURVEY IS TRUE AND CORRECT TO THE BEST OF MY KNOWLEDGE AND BELIEF.

RONALD J. EIDSON *Ronald J. Eidson*

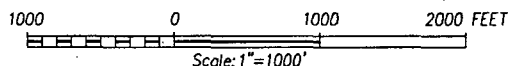
DATE: 10/16/2015



PROVIDING SURVEYING SERVICES  
SINCE 1946  
**JOHN WEST SURVEYING COMPANY**  
412 N. DAL PASO HOBBS, N.M. 88240  
(575) 393-3117 www.jwsc.biz  
TBPLS# 10021000

#### LEGEND

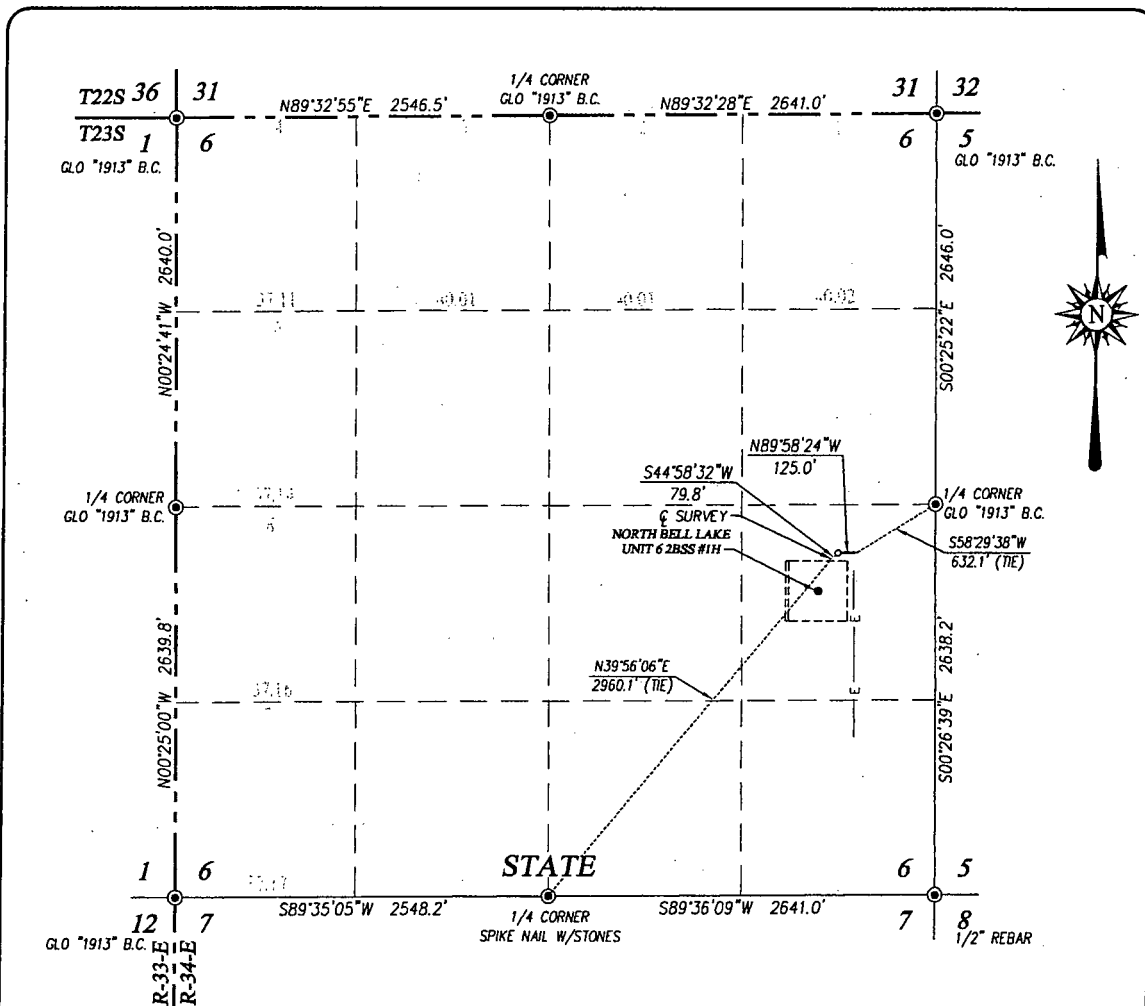
● DENOTES FOUND CORNER AS NOTED



#### KAISER-FRANCIS OIL COMPANY

SURVEY FOR A EXISTING ROAD TO THE  
NORTH BELL LAKE UNIT 6 2BSS #1H  
CROSSING SECTION 6,  
TOWNSHIP 23 SOUTH, RANGE 34 EAST, N.M.P.M.  
LEA COUNTY, NEW MEXICO

Survey Date: 10/2/15 CAD Date: 10/13/15 Drawn By: ACK  
W.O. No.: 15110922 Rev. Rel. W.O.: Sheet 1 of 1



### DESCRIPTION

A STRIP OF LAND 30.0 FEET WIDE CROSSING STATE OF NEW MEXICO LAND IN SECTION 6, TOWNSHIP 23 SOUTH, RANGE 34 EAST, N.M.P.M., LEA COUNTY, NEW MEXICO, AND BEING 15.0 FEET LEFT AND 15.0 FEET RIGHT OF THE FOLLOWING DESCRIBED CENTERLINE SURVEY:

BEGINNING AT A POINT IN THE NORTHEAST QUARTER OF THE SOUTHEAST QUARTER OF SAID SECTION 6, WHICH LIES S58°29'38"W 632.1 FEET FROM THE EAST QUARTER CORNER OF SAID SECTION; THEN N89°58'24"W 125.0 FEET; THEN S44°58'32"W 79.8 FEET TO A POINT IN SAID NORTHEAST QUARTER OF THE SOUTHEAST QUARTER, WHICH LIES N39°56'06"E 2960.1 FEET FROM THE SOUTH QUARTER CORNER OF SAID SECTION.

SAID STRIP OF LAND BEING 204.8 FEET OR 12.41 RODS IN LENGTH, CONTAINING 0.141 ACRES MORE OR LESS AND BEING ALLOCATED BY FORTIES AS FOLLOWS:

NE/4 SE/4 12.41 RODS OR 0.141 ACRES

### NOTE

BEARINGS SHOWN HEREON ARE MERCATOR GRID AND CONFORM TO THE NEW MEXICO COORDINATE SYSTEM "NEW MEXICO EAST ZONE" NORTH AMERICAN DATUM 1983. DISTANCES ARE SURFACE VALUES.

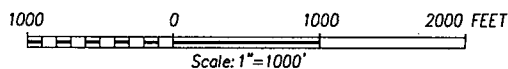
I, RONALD J. EIDSON, NEW MEXICO PROFESSIONAL SURVEYOR No. 3239, DO HEREBY CERTIFY THAT THIS SURVEY PLAN AND THE ACTUAL SURVEY ON THE GROUND WERE PERFORMED BY ME OR UNDER MY DIRECT SUPERVISION, THAT I AM RESPONSIBLE FOR THIS SURVEY; THAT THIS SURVEY MEETS THE MINIMUM STANDARDS FOR SURVEYING IN NEW MEXICO, AND THAT IT IS TRUE AND CORRECT TO THE BEST OF MY KNOWLEDGE AND BELIEF.

RONALD J. EIDSON *Ronald J. Eidson*

DATE: 10/16/2015

### LEGEND

● DENOTES FOUND CORNER AS NOTED



## KAISER-FRANCIS OIL COMPANY

SURVEY FOR A PROPOSED ROAD TO THE  
NORTH BELL LAKE UNIT 6 2BSS #1H  
CROSSING SECTION 6,  
TOWNSHIP 23 SOUTH, RANGE 34 EAST, N.M.P.M.  
LEA COUNTY, NEW MEXICO

Survey Date: 10/2/15 CAD Date: 10/13/15 Drawn By: ACK  
W.O. No.: 15110922 Rev.: Rel. W.O.: Sheet 1 of 1



PROVIDING SURVEYING SERVICES  
SINCE 1946  
**JOHN WEST SURVEYING COMPANY**  
412 N. DAL PASO HOBBS, N.M. 88240  
(575) 393-3117 www.jwsc.biz  
TBPLS# 10021000

# WELL SITE PLAN

