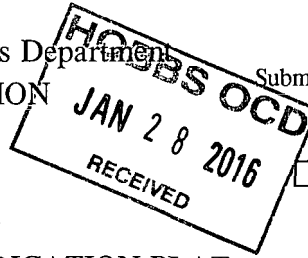


District I
8625 N. French Dr., Hobbs, NM 88240
Phone: (575) 393-6161 Fax: (575) 393-0720
District II
811 S. First St., Artesia, NM 88210
Phone: (575) 748-1283 Fax: (575) 748-9720
District III
1000 Rio Brazos Road, Aztec, NM 87410
Phone: (505) 334-6178 Fax: (505) 334-6170
District IV
1220 S. St. Francis Dr., Santa Fe, NM 87505
Phone: (505) 476-3460 Fax: (505) 476-3462

State of New Mexico
Energy, Minerals & Natural Resources Department
OIL CONSERVATION DIVISION
1220 South St. Francis Dr.
Santa Fe, NM 87505

Form C-102
Revised August 1, 2011
Submit one copy to appropriate
District Office



☐ AMENDED REPORT

WELL LOCATION AND ACREAGE DEDICATION PLAT

¹ API Number 30-025-43046	² Pool Code 22900	³ Pool Name Eunice, Bli-Tu-Dr, North
⁴ Property Code 37346	⁵ Property Name WEST BLINEBRY DRINKARD UNIT	
⁷ OGRID No. 873	⁸ Operator Name APACHE CORPORATION	⁶ Well Number #242
		⁹ Elevation 3479.054

¹⁰ Surface Location

UL or lot no.	Section	Township	Range	Lot Idn	Feet from the	North/South line	Feet from the	East/West line	County
XC	9	21 S	37 E		1,270	NORTH	2,500	WEST	LEA

¹¹ Bottom Hole Location If Different From Surface

UL or lot no.	Section	Township	Range	Lot Idn	Feet from the	North/South line	Feet from the	East/West line	County

¹² Dedicated Acres 40	¹³ Joint or Infill	¹⁴ Consolidation Code	¹⁵ Order No.
--	-------------------------------	----------------------------------	-------------------------

No allowable will be assigned to this completion until all interests have been consolidated or a non-standard unit has been approved by the division.

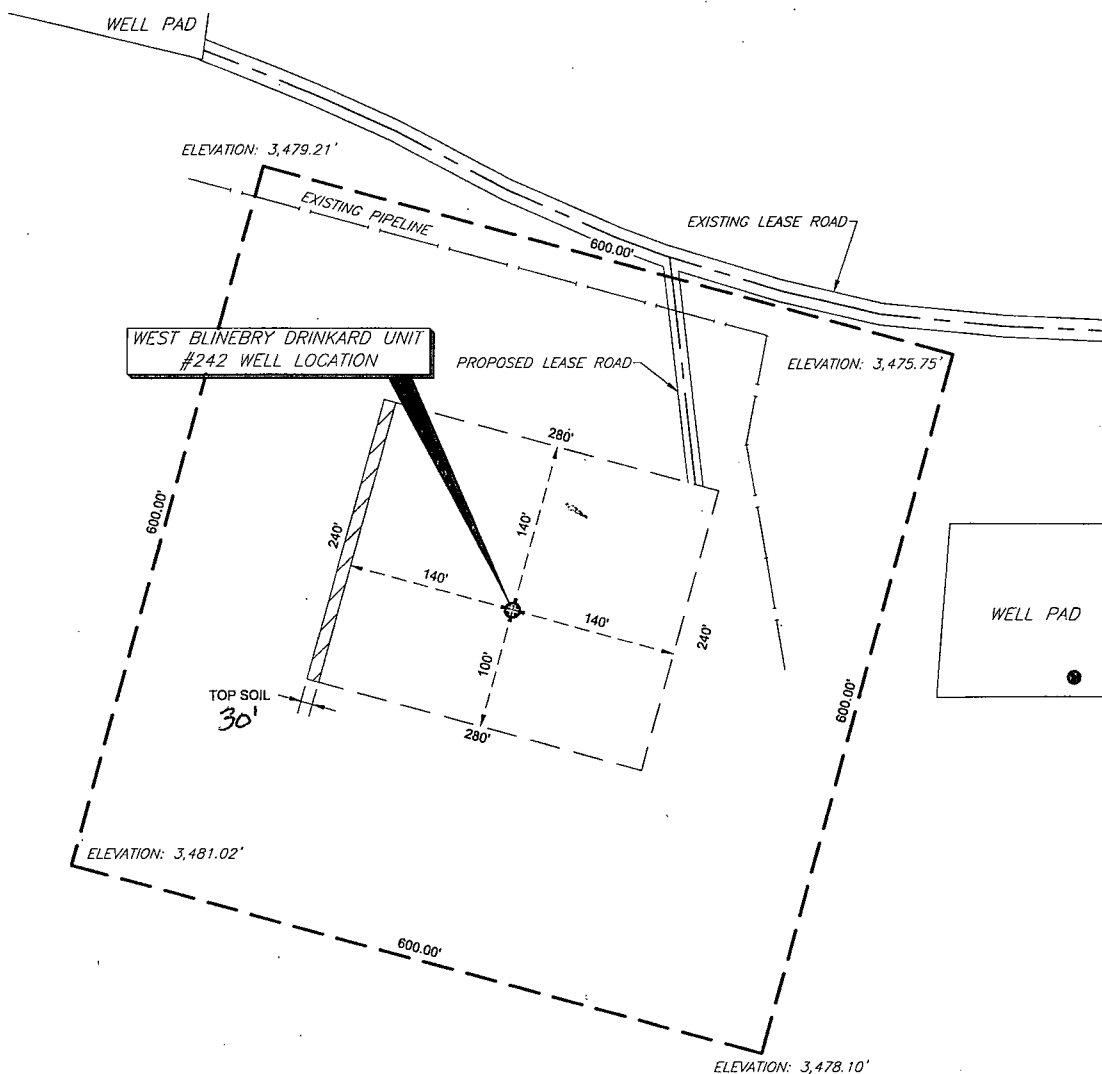
SECTION 9, TOWNSHIP 21 SOUTH, RANGE 37 EAST P.M.

<p>FOUND 3 INCH IRON PIPE, MARKED "U.S. GENERAL LAND OFFICE"</p> <p>LAT: 32.500425 N LON: -103.175936 W NMSPC E: 547704.157 NMSPC E: 856035.088 (N.A.D. 27)</p> <p>LAT: 32.500547 N LON: -103.176407 W NMSPC E: 547764.692 NMSPC E: 856019.092 (N.A.D. 83)</p>	<p>FOUND 3 INCH IRON PIPE, MARKED "U.S. GENERAL LAND OFFICE"</p> <p>LAT: 32.500407 N LON: -103.158794 W NMSPC E: 547755.306 NMSPC E: 862120.424 (N.A.D. 27)</p> <p>LAT: 32.500528 N LON: -103.159265 W NMSPC E: 547815.516 NMSPC E: 903304.383 (N.A.D. 83)</p>	<p>¹⁷ OPERATOR CERTIFICATION</p> <p>I hereby certify that the information contained herein is true and complete to the best of my knowledge and belief, and that this organization either owns a working interest or unleased mineral interest in the land including the proposed bottom hole location or has a right to drill this well at this location pursuant to a contract with an owner of such a mineral or working interest, or to a voluntary pooling agreement or a compulsory pooling order heretofore entered by the division.</p> <p><i>Sorina L. Flores</i> 12/5/14 Signature Date</p> <p>Sorina L. Flores Printed Name</p> <p>sorina.flores@apachecorp.com E-mail Address</p>
<p>SURFACE LOCATION</p> <p>DD LAT: 32.496926 N DD LON: -103.167827 W DMS LAT: 32°29'48.935" N DMS LON: 103°10'4.178" W NMSPC E: 546458.452 NMSPC E: 859349.192 (N.A.D. 27)</p> <p>DD LAT: 32.497047 N DD LON: -103.168298 W DMS LAT: 32°29'49.370" N DMS LON: 103°10'05.873" W NMSPC E: 546518.811 NMSPC E: 900333.212 (N.A.D. 83)</p>		
<p>FOUND 3 INCH IRON PIPE, MARKED "U.S. GENERAL LAND OFFICE"</p> <p>LAT: 32.485905 N LON: -103.175930 W NMSPC E: 542421.570 NMSPC E: 856894.168 (N.A.D. 27)</p> <p>LAT: 32.486027 N LON: -103.176401 W NMSPC E: 542481.998 NMSPC E: 858078.309 (N.A.D. 83)</p>	<p>FOUND 5/8 INCH IRON ROD, CAPPED "WEST ENGINEERING"</p> <p>LAT: 32.485888 N LON: -103.158787 W NMSPC E: 542473.371 NMSPC E: 862177.445 (N.A.D. 27)</p> <p>LAT: 32.486010 N LON: -103.159268 W NMSPC E: 542533.476 NMSPC E: 903361.550 (N.A.D. 83)</p>	<p>"SURVEYOR CERTIFICATION"</p> <p>I hereby certify that the well location shown on this plat was plotted from field notes of actual surveys made by me or under my supervision, and that the same is true and correct to the best of my belief.</p> <p>4-30-2014 Date of Survey</p> <p>Signature and Seal of Professional Surveyor <i>Jeffrey Hudson</i></p> <p>Jeffrey Hudson PROFESSIONAL SURVEYOR 20559</p> <p>Certificate Number 20559</p>

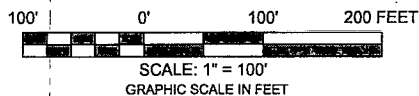
FEB 01 2016

LEA COUNTY, NEW MEXICO

SECTION NINE (9), TOWNSHIP TWENTY-ONE (21) SOUTH,
RANGE THIRTY-SEVEN (37) EAST OF THE PRINCIPAL MERIDIAN



COORDINATE TABLE				
WELL NAME	NORTHING (N.A.D. 27)	EASTING (N.A.D. 27)	NORTHING (N.A.D. 83)	EASTING (N.A.D. 83)
WBDU #242 SURFACE LOCATION & PENETRATION POINT	546458.452	859349.192	546518.811	900533.212
ELEVATION	LATITUDE (N.A.D. 27)	LONGITUDE (N.A.D. 27)	LATITUDE (N.A.D. 83)	LONGITUDE (N.A.D. 83)
3,479.054'	32.495926 N	-103.167827 W	32.497047 N	-103.168298 W



THE WEST BLINEBRY DRINKARD UNIT #242 IS LOCATED
APPROXIMATELY 4 MILES NORTH-NORTHWEST OF
EUNICE, NEW MEXICO

PREPARED FROM SURVEY
DATED: AUGUST 1, 2014

NOTES:

1.) BEARINGS & COORDINATES SHOWN HEREON ARE REFERENCED TO THE NEW MEXICO STATE PLANE COORDINATE SYSTEM, N.A.D. 27 & 83 DATUM (NEW MEXICO EAST ZONE) DERIVED FROM GPS OBSERVATIONS AND ARE BASED REFERENCE STATIONS - "E 148" - MALJAMAR NE (1985)

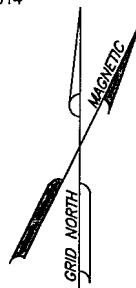
2.) LATITUDE & LONGITUDE ARE NAD 83 & 27 GEOGRAPHIC.

3.) THIS IS AN WELL PLAT AND DOES NOT REPRESENT A TRUE BOUNDARY SURVEY. THIS SURVEY IS BASED ON OWNERSHIP AND EASEMENT INFORMATION PROVIDED BY APACHE CORPORATION. SURVEYOR DID NOT ABSTRACT SUBJECT TRACT AND THERE MAY BE EASEMENTS OR OTHER ENCUMBRANCES THAT AFFECT THE SUBJECT TRACT THAT ARE NOT SHOWN HEREON.



TRANSGLOBAL
SERVICES LLC

8205 Camp Bowie West, Suite 204
Fort Worth, Texas 76116
(817) 386-0362 ~ Fax (682) 224-3377



Apache

Location of

WEST BLINEBRY DRINKARD UNIT #242

Surface Location & Penetration Point: 1270' FNL & 2500' FWL

Section 9, Township 21 South, Range 37 East of P.M.

Lea County, New Mexico

DRAWN BY: P.R.W. DATE: 6-05-14

CHECKED BY: DATE:

SCALE: 1" = 100'

DWG. NO.

WBDU #242
WELL LOCATION

APP.:

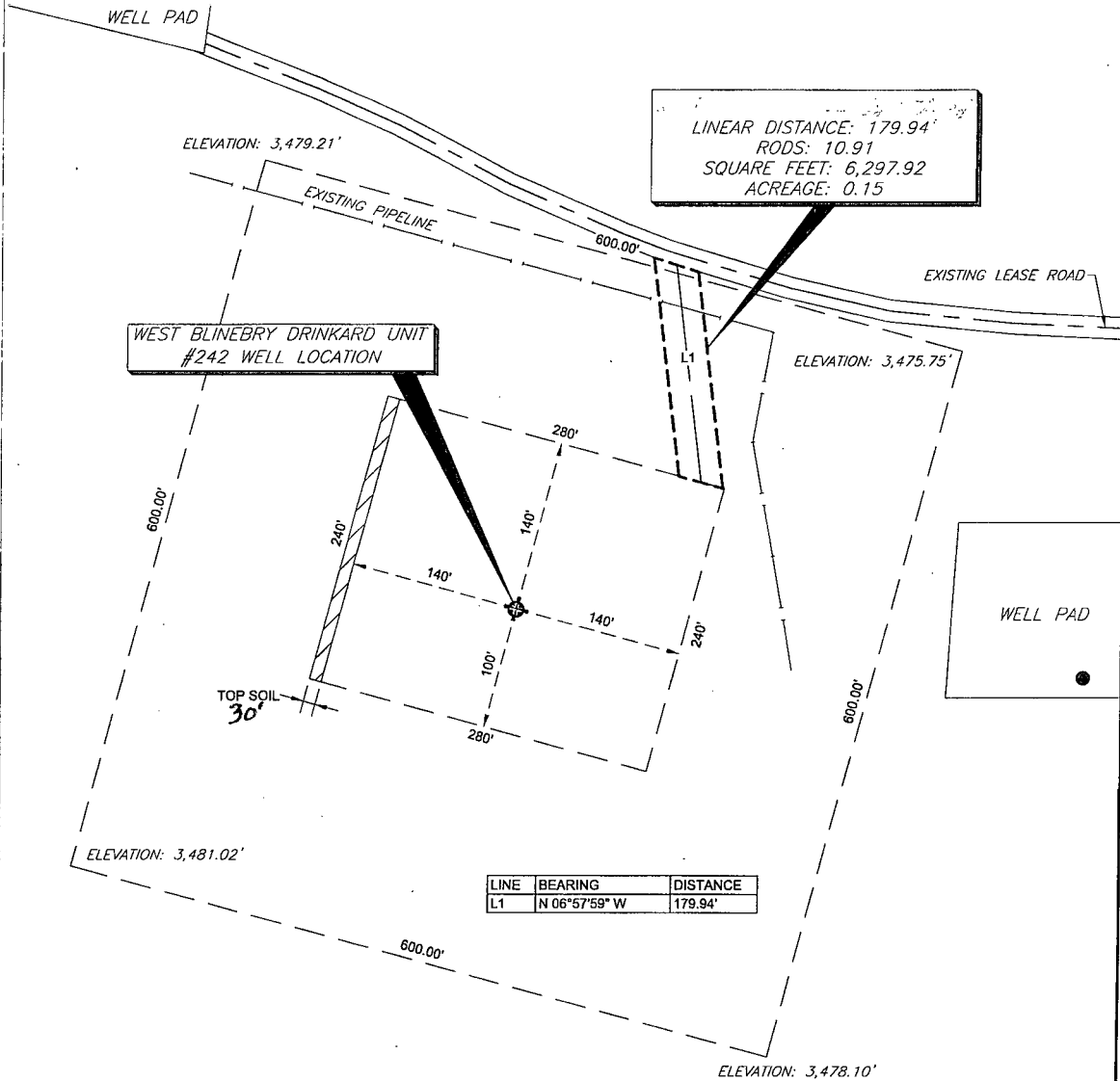
REV.

0

PAGE 1 OF 1

LEA COUNTY, NEW MEXICO

SECTION NINE (9), TOWNSHIP TWENTY-ONE (21) SOUTH,
RANGE THIRTY-SEVEN (37) EAST OF THE PRINCIPAL MERIDIAN



COORDINATE TABLE				
WELL NAME	NORTHING (N.A.D. 27)	EASTING (N.A.D. 27)	NORTHING (N.A.D. 83)	EASTING (N.A.D. 83)
WBDU #242 SURFACE LOCATION & PENETRATION POINT	546458.452	859349.192	546518.811	900533.212
ELEVATION	LATITUDE (N.A.D. 27)	LONGITUDE (N.A.D. 27)	LATITUDE (N.A.D. 83)	LONGITUDE (N.A.D. 83)
3,479.054'	32.496926 N	-103.167827 W	32.497047 N	-103.168298 W



SCALE: 1" = 100'
GRAPHIC SCALE IN FEET

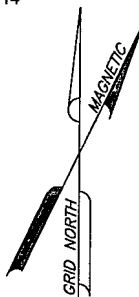
PREPARED FROM SURVEY
DATED: AUGUST 1, 2014

NOTES:

1.) BEARINGS & COORDINATES SHOWN HEREON ARE REFERENCED TO THE NEW MEXICO STATE PLANE COORDINATE SYSTEM, N.A.D. 27 & 83 DATUM (NEW MEXICO EAST ZONE) DERIVED FROM GPS OBSERVATIONS AND ARE BASED REFERENCE STATIONS - "E 146" - MALAMAR NE (1985)

2.) LATITUDE & LONGITUDE ARE NAD 83 & 27 GEOGRAPHIC.

3.) THIS IS AN WELL PLAT AND DOES NOT REPRESENT A TRUE BOUNDARY SURVEY. THIS SURVEY IS BASED ON OWNERSHIP AND EASEMENT INFORMATION PROVIDED BY APACHE CORPORATION. SURVEYOR DID NOT ABSTRACT SUBJECT TRACT AND THERE MAY BE EASEMENTS OR OTHER ENCUMBRANCES THAT AFFECT THE SUBJECT TRACT THAT ARE NOT SHOWN HEREON.



THE WEST BLINEBRY DRINKARD UNIT #242 IS LOCATED
APPROXIMATELY 4 MILES NORTH-NORTHWEST OF
EUNICE, NEW MEXICO

Apache

Location of

WEST BLINEBRY DRINKARD UNIT #242

Surface Location & Penetration Point: 1270' FNL & 2500' FWL

Section 9, Township 21 South, Range 37 East of P.M.

Lea County, New Mexico



**TRANSGLOBAL
SERVICES LLC**





8205 Camp Bowie West, Suite 204
Fort Worth, Texas 76116
(817) 386-0362 - Fax (882) 224-3377

DRAWN BY: P.R.W.	DATE: 8-05-14	DWG. NO.	REV.
CHECKED BY:	DATE:	WBDU #242 WELL LOCATION	0
SCALE: 1" = 100'	APP.:	PAGE 1 OF 1	

Exhibit 14- West Blinebry Drinkard Unit 242 - Proposed Flowline

Approx. 1691' of new 3" surface Poly flow line to
WBDU Sat. #11 following existing ROW & existing
surface flow line disturbance. W.P. will be 80psi
or less.

Legend

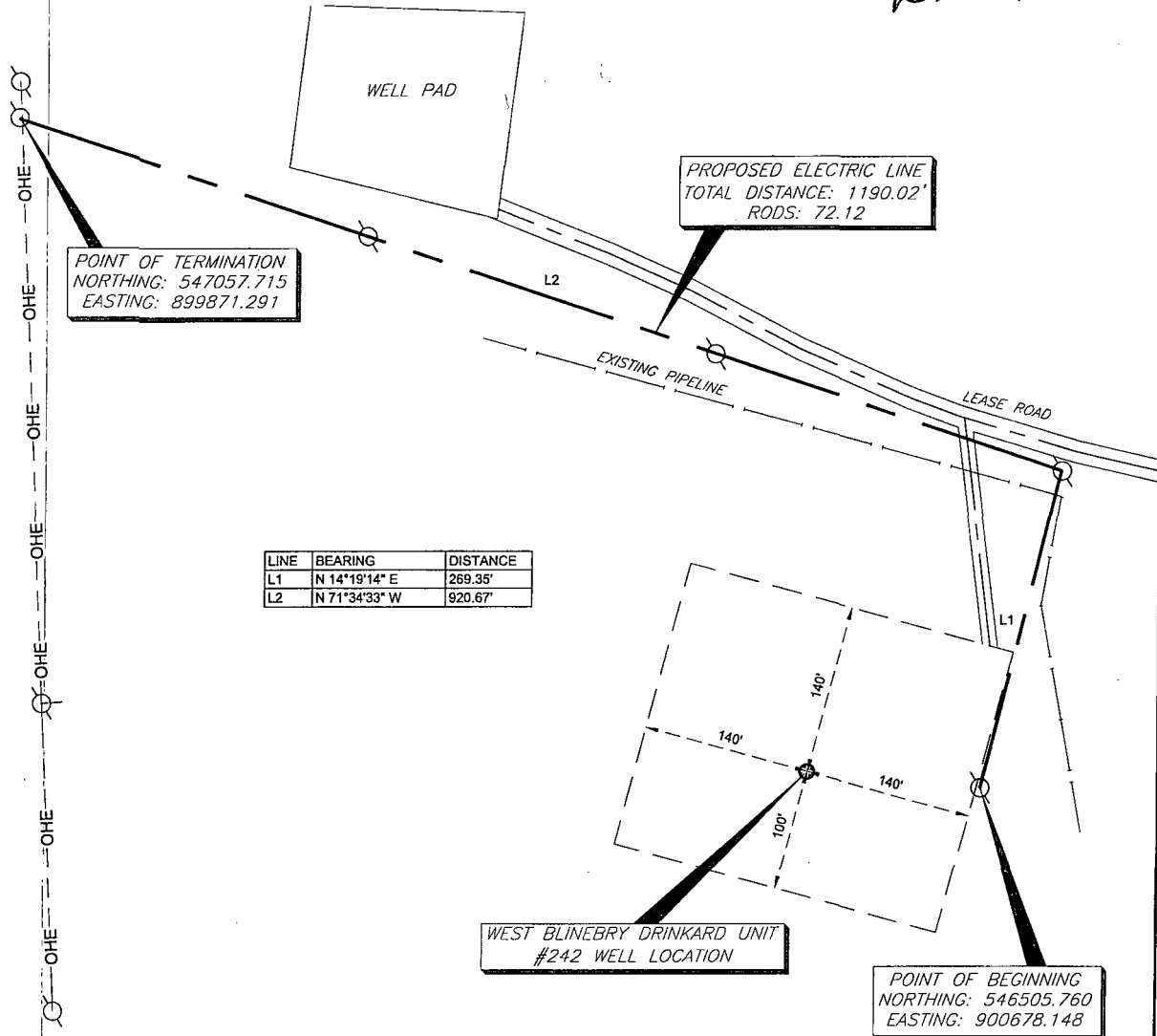
-  Proposed FL-WBDU 242
-  Proposed Road to WBDU 242
-  WBDU
-  WBDU-242



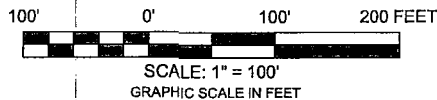
LEA COUNTY, NEW MEXICO

SECTION NINE (9), TOWNSHIP TWENTY-ONE (21) SOUTH,
RANGE THIRTY-SEVEN (37) EAST OF THE PRINCIPAL MERIDIAN

Exhibit 1B



COORDINATE TABLE				
WELL NAME	NORTHING (N.A.D. 27)	EASTING (N.A.D. 27)	NORTHING (N.A.D. 83)	EASTING (N.A.D. 83)
WBDU #242 SURFACE LOCATION & PENETRATION POINT	546458.452	859349.192	546518.811	900533.212
ELEVATION	LATITUDE (N.A.D. 27)	LONGITUDE (N.A.D. 27)	LATITUDE (N.A.D. 83)	LONGITUDE (N.A.D. 83)
3,479.054'	32.496926 N	-103.167827 W	32.497047 N	-103.168298 W



THE WEST BLINEBRY DRINKARD UNIT #242 IS LOCATED
APPROXIMATELY 4 MILES NORTH-NORTHWEST OF
EUNICE, NEW MEXICO

PREPARED FROM SURVEY
DATED: AUGUST 1, 2014

NOTES:

1.) BEARINGS & COORDINATES SHOWN HEREON ARE REFERENCED TO THE NEW MEXICO STATE PLANE COORDINATE SYSTEM, N.A.D. 27 & 83 DATUM (NEW MEXICO EAST ZONE) DERIVED FROM GPS OBSERVATIONS AND ARE BASED REFERENCE STATIONS - "E 148" - MALJAMAR NE (1985)

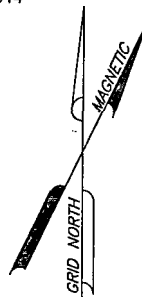
2.) LATITUDE & LONGITUDE ARE NAD 83 & 27 GEOGRAPHIC.

3.) THIS IS AN WELL PLAT AND DOES NOT REPRESENT A TRUE BOUNDARY SURVEY. THIS SURVEY IS BASED ON OWNERSHIP AND EASEMENT INFORMATION PROVIDED BY APACHE CORPORATION. SURVEYOR DID NOT ABSTRACT SUBJECT TRACT AND THERE MAY BE EASEMENTS OR OTHER ENCUMBRANCES THAT AFFECT THE SUBJECT TRACT THAT ARE NOT SHOWN HEREON.



TRANSGLOBAL
SERVICES LLC

8205 Camp Bowie West, Suite 204
Fort Worth, Texas 76116
(817) 386-0362 ~ Fax (682) 224-3377



Apache

Location of

PROPOSED ELECTRICAL LINE

Section 9, Township 21 South, Range 37 East of P.M.

Lea County, New Mexico

DRAWN BY: P.R.W.	DATE: 8-05-14	DWG. NO.	REV.
CHECKED BY:	DATE:	WBDU #242 WELL LOCATION	0
SCALE: 1" = 100'	APP.:	PAGE 1 OF 1	



TRANSGLOBAL
SERVICES LLC

WEST BLINEBRY DRINKARD UNIT 242

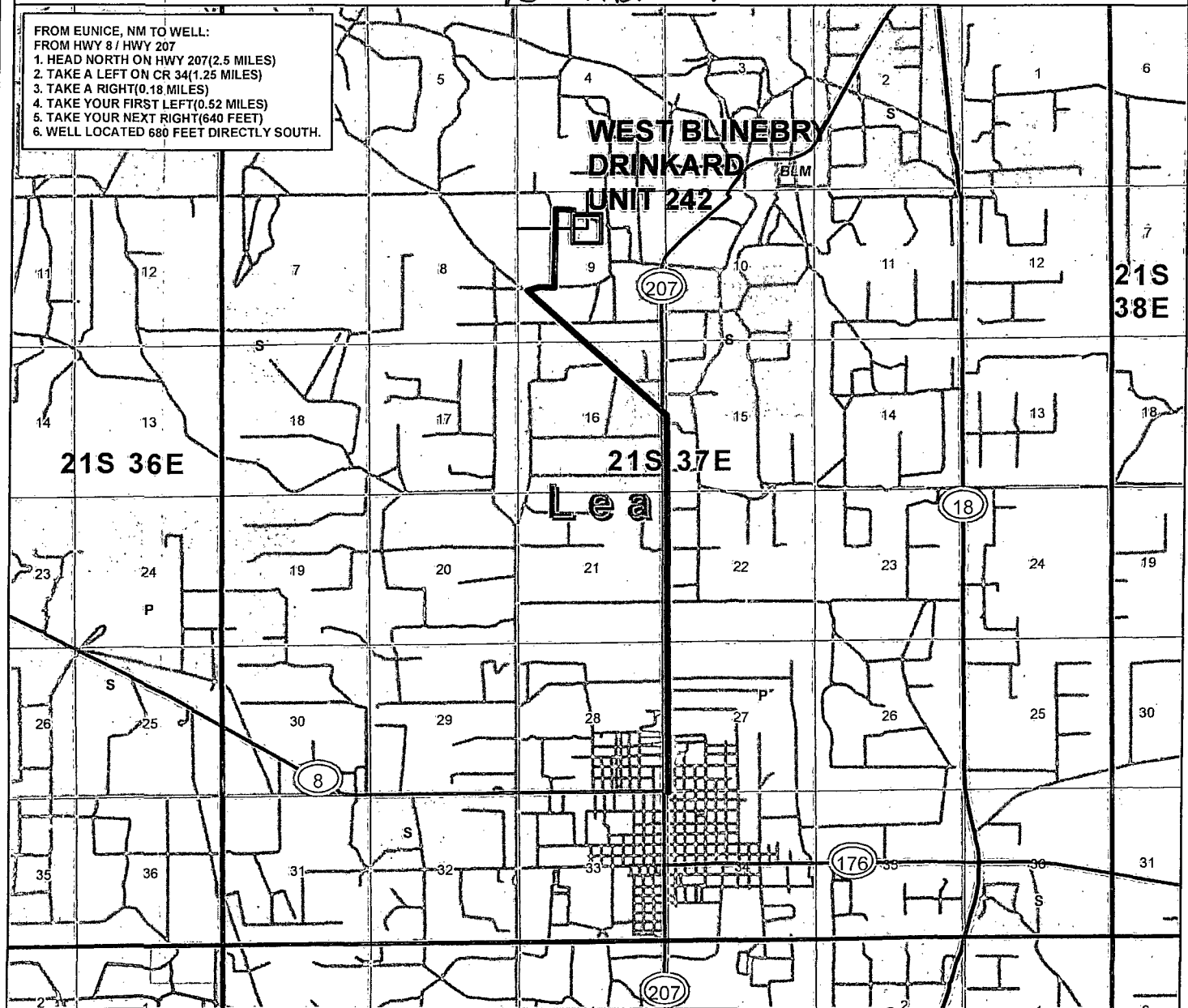
1270' FNL, 2500' FWL

SEC 9, T21S R37E

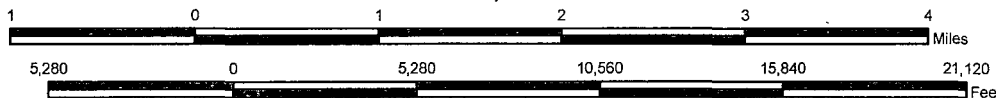
Exhibit 1C

Apache
EXPLORING WHAT'S POSSIBLE

FROM EUNICE, NM TO WELL:
FROM HWY 8 / HWY 207
1. HEAD NORTH ON HWY 207(2.5 MILES)
2. TAKE A LEFT ON CR 34(1.25 MILES)
3. TAKE A RIGHT(0.18 MILES)
4. TAKE YOUR FIRST LEFT(0.52 MILES)
5. TAKE YOUR NEXT RIGHT(640 FEET)
6. WELL LOCATED 680 FEET DIRECTLY SOUTH.

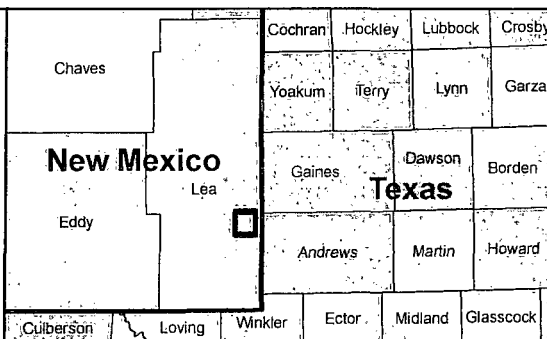


1 inch = 5,280 feet



Legend

- 10 mi buffer
- BLM
- Private
- State
- Routes
- Permit
- Gas
- Oil
- Injection Well
- Plugged and Abandoned
- Plugged
- Shut-in Gas
- Shut-in Oil
- Temporarily Abandoned



NAD 1927 StatePlane
New Mexico East FIPS 3001
Projection: Transverse Mercator
False Easting: 500000.000000
False Northing: 0.000000
Central Meridian: -104.333333
Scale Factor: 0.999909
Latitude Of Origin: 31.000000
Linear Unit: Foot US

GCS North American 1927
Datum: D North American 1927

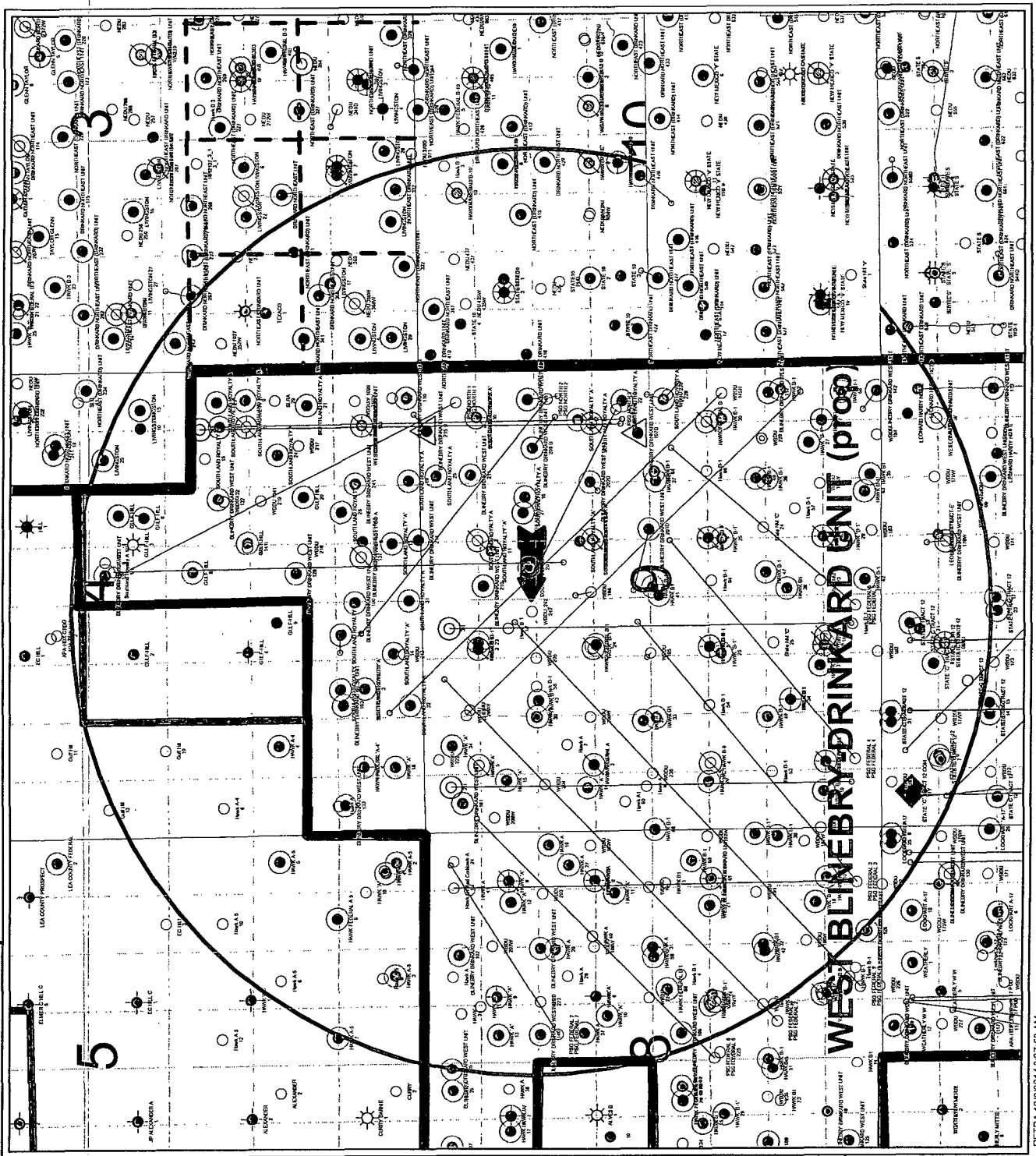
Drawn By: Nicholas Tallant

Checked by:

Date: 8/4/2014

Sheet
1 of 1

Exhibit #2



PETRA 12/3/2014 9:27:53 AM

APACHE CORPORATION

WEST-BLINBERRY DRINKARD UNIT-#242

1270' FNL & 2500' FWL

SEC 9 T21S R37E

1 MILE RADIUS



POSTED WELL DATA

Well Name
Well Number

WELL SYMBOLS

- Abandoned Oil and Gas Well
- Dry Hole, With Show of Gas
- Dry Hole, With Show of Oil
- Dry Hole
- Gas Well
- Active Injection
- Key Injection well
- Location
- New Location
- Oil & Gas Well
- Oil Well
- P&A'd Gas Well
- Active Gas Producer
- Plugged and Abandoned
- Active Producer
- PERMIT
- Pilot Hole
- P&A Oil

December 3, 2014