

District I
1625 N. French Dr., Hobbs, NM 88240
Phone: (575) 393-6161 Fax: (575) 393-0720
District II
511 S. First St., Artesia, NM 88210
Phone: (575) 748-1283 Fax: (575) 748-9720
District III
1000 Rio Brazos Road, Aztec, NM 87410
Phone: (505) 334-6178 Fax: (505) 334-6170
District IV
1220 S. St. Francis Dr., Santa Fe, NM 87505
Phone: (505) 476-3460 Fax: (505) 476-3462

State of New Mexico
Energy, Minerals & Natural Resources Department
OIL CONSERVATION DIVISION
1220 South St. Francis Dr.
Santa Fe, NM 87505

JAN 28 2016
RECEIVED

Form C-102
Revised August 1, 2011
Submit one copy to appropriate
District Office

☐ AMENDED REPORT

WELL LOCATION AND ACREAGE DEDICATION PLAT

¹ API Number 30-025-47051		² Pool Code 96434	³ Pool Name RED HILLS; BONE SPRING, NORTH
⁴ Property Code 315754	⁵ Property Name BLUE KRAIT 23 FED		⁶ Well Number 10H
⁷ GRID No. 6137	⁸ Operator Name DEVON ENERGY PRODUCTION COMPANY, L.P.		⁹ Elevation 3551.3

¹⁰ Surface Location

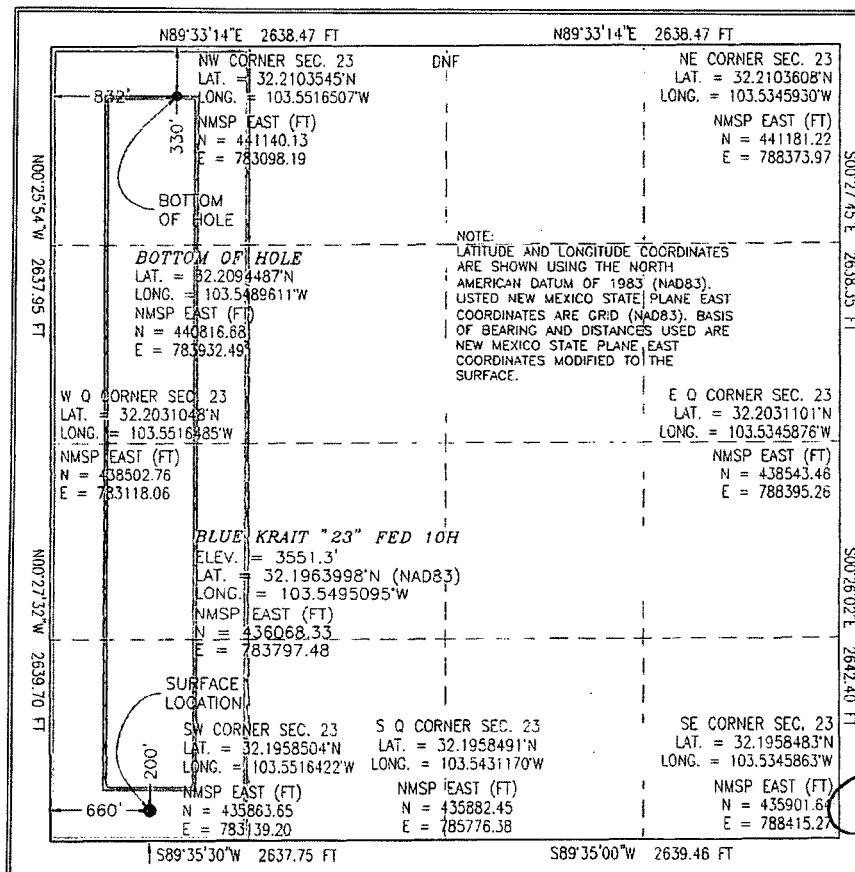
UL or lot no.	Section	Township	Range	Lot Idn	Feet from the	North/South line	Feet from the	East/West line	County
M	23	24 S	33 E		200	SOUTH	660	WEST	LEA

¹¹ Bottom Hole Location If Different From Surface

UL or lot no.	Section	Township	Range	Lot Idn	Feet from the	North/South line	Feet from the	East/West line	County
D	23	24 S	33 E		330	NORTH	832	WEST	LEA

¹² Dedicated Acres	¹³ Joint or Infill	¹⁴ Consolidation Code	¹⁵ Order No.

No allowable will be assigned to this completion until all interests have been consolidated or a non-standard unit has been approved by the division.



¹⁷ OPERATOR CERTIFICATION

I hereby certify that the information contained herein is true and complete to the best of my knowledge and belief, and that this organization either owns a working interest or unleased mineral interest in the land including the proposed bottom hole location or has a right to drill this well at this location pursuant to a contract with an owner of such a mineral or working interest, or to a voluntary pooling agreement or a compulsory pooling order heretofore entered by the division.

Signature: *[Signature]* Date: 10/16/2015

Printed Name: David H. Cook Regulatory Specialist

E-mail Address: david.cook@dmn.com

¹⁸ SURVEYOR CERTIFICATION

I hereby certify that the well location shown on this plat was plotted from field notes of actual surveys made by me or under my supervision, and that the same is true and correct to the best of my belief.

Signature: *[Signature]* Date of Survey: SEPTEMBER 15, 2015

Signature and Seal of Professional Surveyor: *[Signature]*
Certificate Number: PHAMON F. JARAMILLO, PLS 12797
SURVEY NO. 346-E

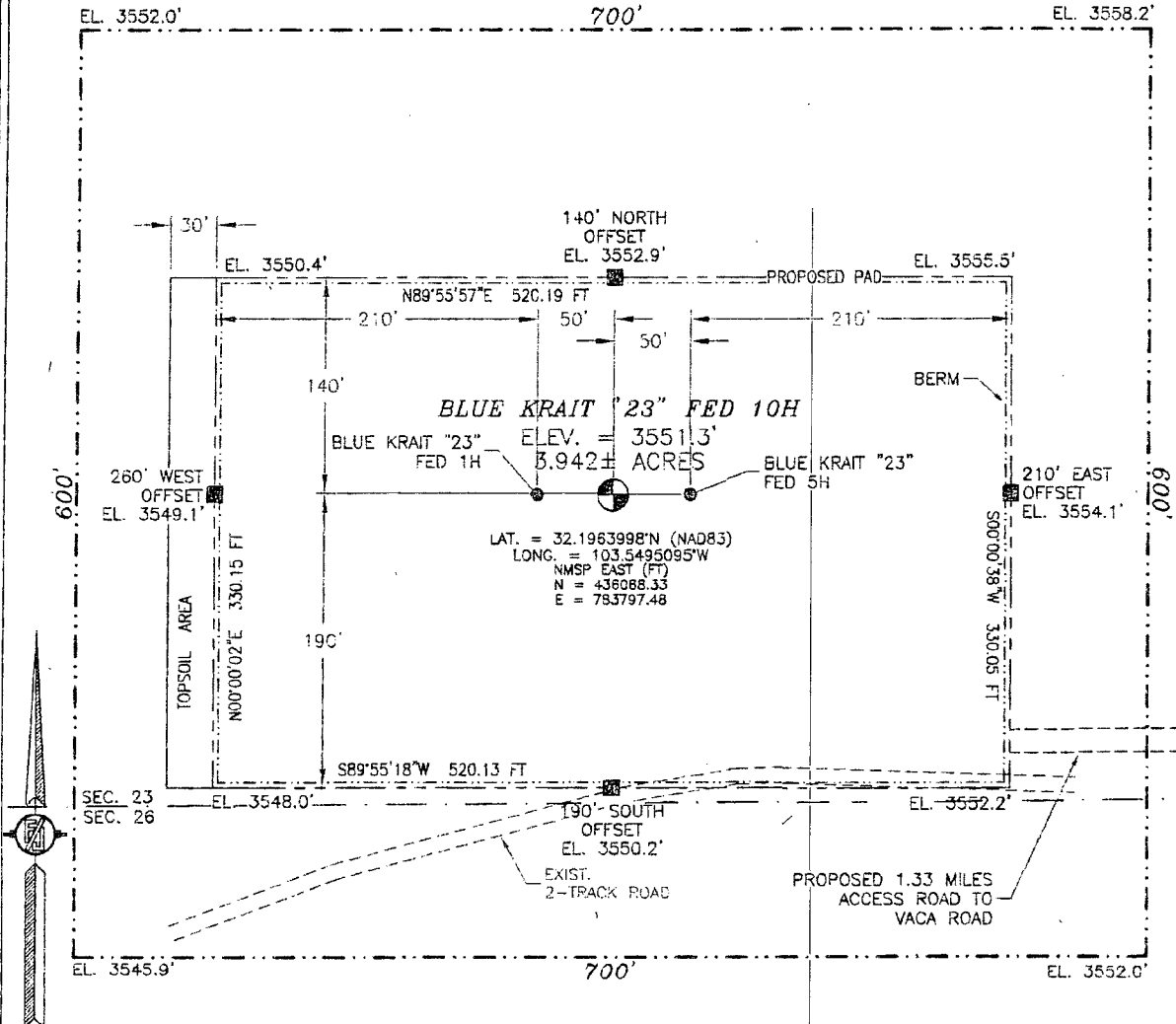
PP: 200 FSL & 660 FWL.

FEB 01 2016

SECTION 23, TOWNSHIP 24 SOUTH, RANGE 33 EAST, N.M.P.M.
LEA COUNTY, STATE OF NEW MEXICO

SITE MAP

NOTE: LATITUDE AND LONGITUDE COORDINATES ARE SHOWN USING THE NORTH AMERICAN DATUM OF 1983 (NAD83). LISTED NEW MEXICO STATE PLANE EAST COORDINATES ARE GRID (NAD83). BASIS OF BEARING AND DISTANCES USED ARE NEW MEXICO STATE PLANE EAST COORDINATES MODIFIED TO THE SURFACE



010 50 100 200

SCALE 1" = 100'

DIRECTIONS TO LOCATION

FROM THE INTERSECTION OF STATE HIGHWAY 128 AND VACA ROAD GO SOUTHEAST ON VACA ROAD FOR APPROX. 1.1 MILES. GO WEST ON 2-TRACK ROAD FOR APPROX. 1.33 MILES TO SOUTHEAST PAD CORNER.

DEVON ENERGY PRODUCTION COMPANY, L.P.

BLUE KRAIT "23" FED 10H

LOCATED 200 FT. FROM THE SOUTH LINE

AND 660 FT. FROM THE WEST LINE OF

SECTION 23, TOWNSHIP 24 SOUTH,

RANGE 33 EAST, N.M.P.M.

LEA COUNTY, STATE OF NEW MEXICO

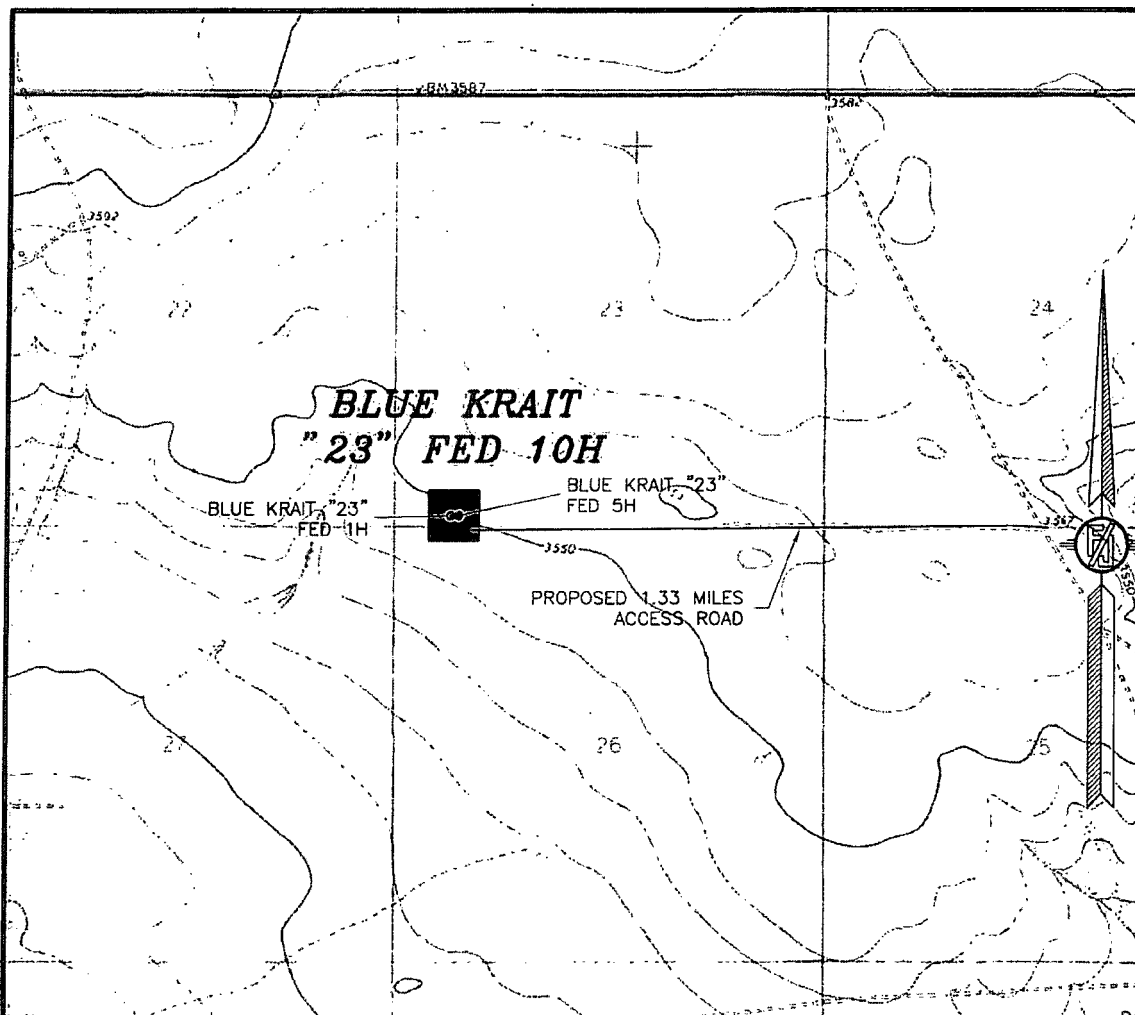
SEPTEMBER 28, 2015

SURVEY NO. 3464E

MADRON SURVEYING, INC. 301 SOUTH CANAL

CARLSBAD, NEW MEXICO

SECTION 23, TOWNSHIP 24 SOUTH, RANGE 33 EAST, N.M.P.M.
LEA COUNTY, STATE OF NEW MEXICO
LOCATION VERIFICATION MAP



USGS QUAD MAP:
BELL LAKE

NOT TO SCALE

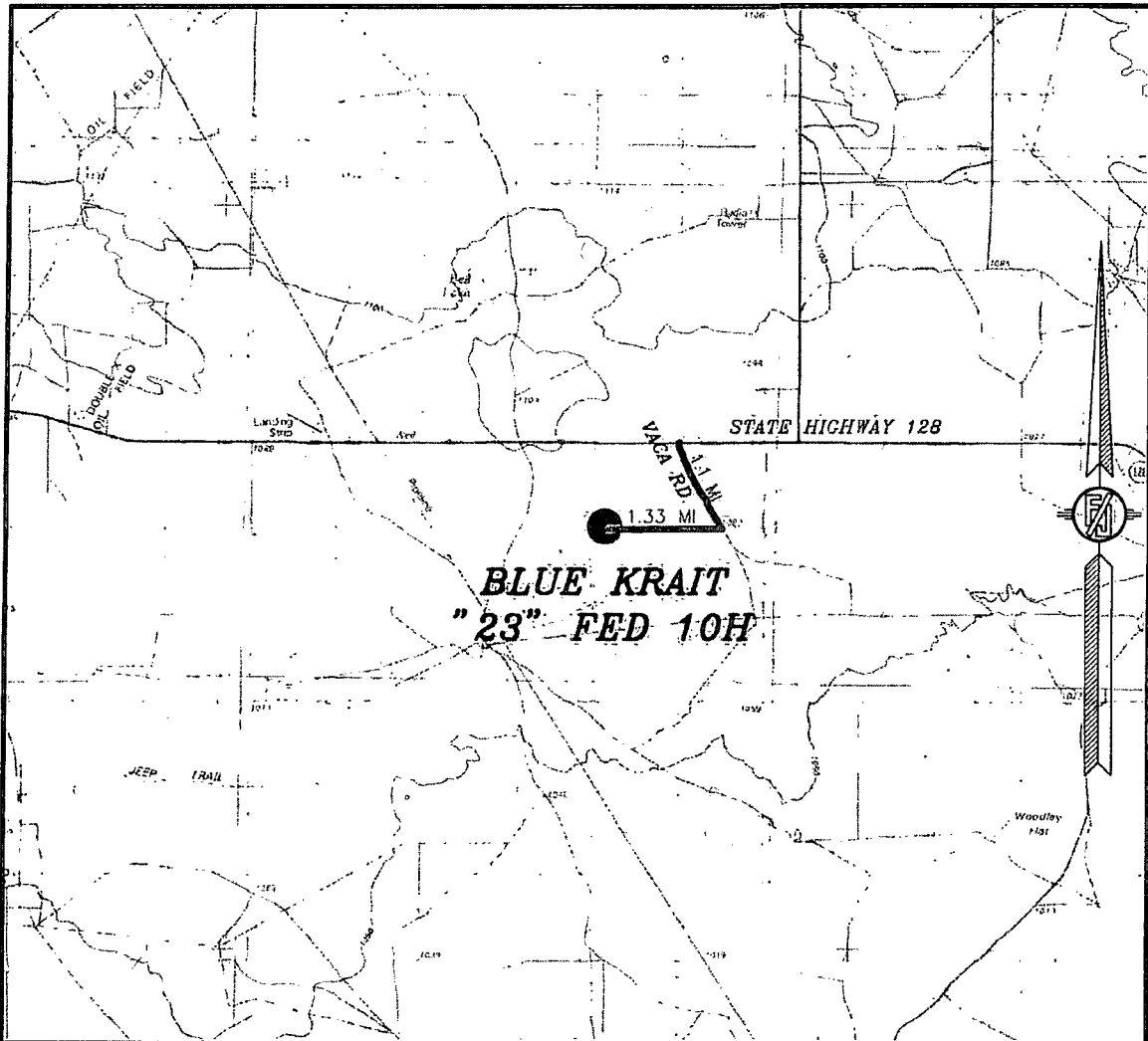
DEVON ENERGY PRODUCTION COMPANY, L.P.
BLUE KRAIT "23" FED 10H
LOCATED 200 FT. FROM THE SOUTH LINE
AND 660 FT. FROM THE WEST LINE OF
SECTION 23, TOWNSHIP 24 SOUTH,
RANGE 33 EAST, N.M.P.M.
LEA COUNTY, STATE OF NEW MEXICO

SEPTEMBER 28, 2015

MADRON SURVEYING, INC. 301 SOUTH CANAL, CARLSBAD, NEW MEXICO
(575) 234-3341

SURVEY NO. 3464E

SECTION 23, TOWNSHIP 24 SOUTH, RANGE 33 EAST, N.M.P.M.
LEA COUNTY, STATE OF NEW MEXICO
VICINITY MAP



DISTANCES IN MILES

NOT TO SCALE

DEVON ENERGY PRODUCTION COMPANY, L.P.

BLUE KRAIT "23" FED 10H

LOCATED 200 FT. FROM THE SOUTH LINE
AND 660 FT. FROM THE WEST LINE OF

SECTION 23, TOWNSHIP 24 SOUTH,

RANGE 33 EAST, N.M.P.M.

LEA COUNTY, STATE OF NEW MEXICO

SEPTEMBER 28, 2015

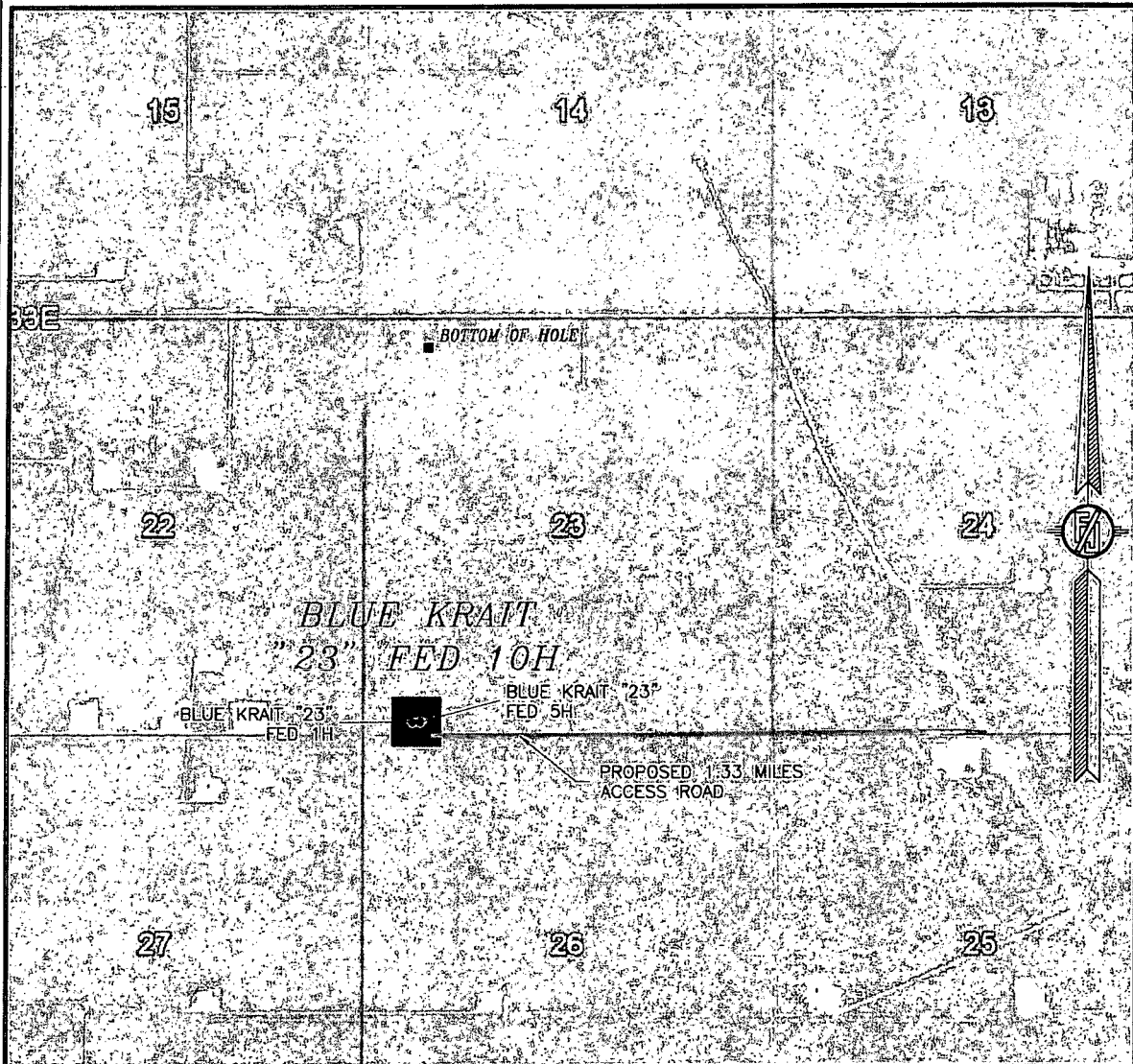
DIRECTIONS TO LOCATION

FROM THE INTERSECTION OF STATE HIGHWAY 128 AND VACA ROAD GO
SOUTHEAST ON VACA ROAD FOR APPROX. 1.1 MILES. GO WEST ON
2-TRACK ROAD FOR APPROX. 1.33 MILES TO SOUTHEAST PAD
CORNER.

SURVEY NO. 3464E

MADRON SURVEYING, INC. 301 SOUTH CANAL (575) 234-3341 CARLSBAD, NEW MEXICO

SECTION 23, TOWNSHIP 24 SOUTH, RANGE 33 EAST, N.M.P.M.
LEA COUNTY, STATE OF NEW MEXICO
AERIAL PHOTO



NOT TO SCALE
AERIAL PHOTO:
GOOGLE EARTH
FEBRUARY 2014

DEVON ENERGY PRODUCTION COMPANY, L.P.

BLUE KRAIT "23" FED 10H

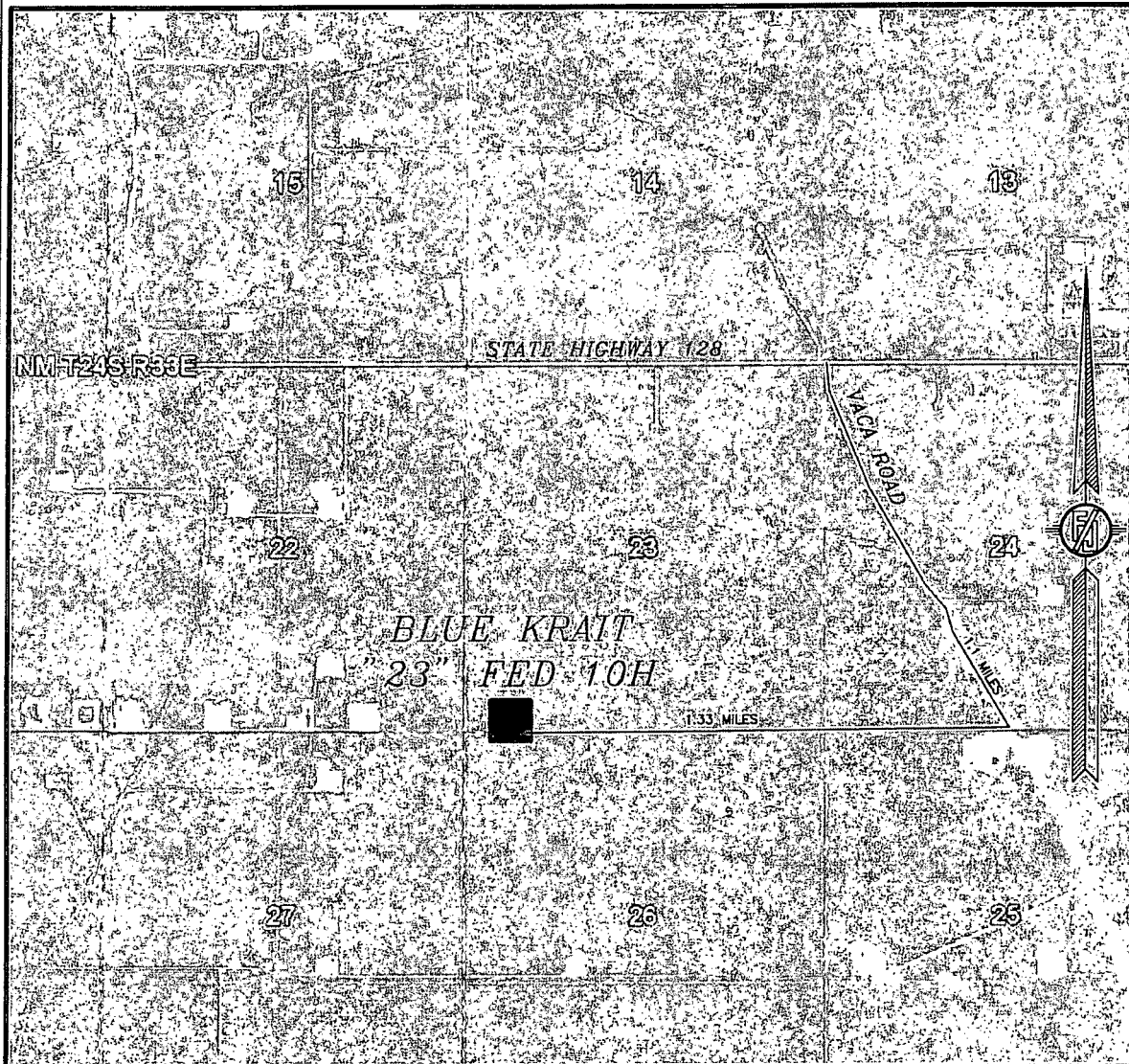
LOCATED 200 FT. FROM THE SOUTH LINE
AND 660 FT. FROM THE WEST LINE OF
SECTION 23, TOWNSHIP 24 SOUTH,
RANGE 33 EAST, N.M.P.M.
LEA COUNTY, STATE OF NEW MEXICO

SEPTEMBER 28, 2015

SURVEY NO. 3464E

MADRON SURVEYING, INC. 301 SOUTH CANAL CARLSBAD, NEW MEXICO
(575) 234-3341

SECTION 23, TOWNSHIP 24 SOUTH, RANGE 33 EAST, N.M.P.M.
LEA COUNTY, STATE OF NEW MEXICO
ACCESS AERIAL ROUTE MAP



NOT TO SCALE
AERIAL PHOTO:
GOOGLE EARTH
FEBRUARY 2014

DEVON ENERGY PRODUCTION COMPANY, L.P.

BLUE KRAIT "23" FED 10H

LOCATED 200 FT. FROM THE SOUTH LINE
AND 660 FT. FROM THE WEST LINE OF
SECTION 23, TOWNSHIP 24 SOUTH,
RANGE 33 EAST, N.M.P.M.
LEA COUNTY, STATE OF NEW MEXICO

SEPTEMBER 28, 2015

SURVEY NO. 3464E

MADRON SURVEYING, INC. 301 SOUTH CANAL (575) 234-3341 CARLSBAD, NEW MEXICO

