

DISTRICT I
1625 N. French Dr., Hobbs, NM 88240
Phone: (575) 393-6161 Fax: (575) 393-0720

DISTRICT II
811 S. First St., Artesia, NM 88210
Phone: (575) 748-1283 Fax: (575) 748-9720

DISTRICT III
1000 Rio Braxos Rd., Artesia, NM 87410
Phone: (505) 334-6178 Fax: (505) 334-6170

DISTRICT IV
1220 S. St. Francis Dr., Santa Fe, NM 87505
Phone: (505) 476-3460 Fax: (505) 476-3462

State of New Mexico
Energy, Minerals & Natural Resources Department

OIL CONSERVATION DIVISION
1220 South St. Frances Dr.
Santa Fe, NM 87505

Form C-102
Revised August 1, 2011
Submit one copy to appropriate
District Office

FEB 29 2016

RECEIVED

☐ AMENDED REPORT

WELL LOCATION AND ACREAGE DEDICATION PLAT

API Number 30-025-43092	Pool Code 37570	Pool Name Lea; Bone Spring
Property Code 302802	Property Name LEA UNIT	Well Number 37H
OGRID No. 240974	Operator Name LEGACY RESERVES OPERATING LP	Elevation 3674'

Surface Location

UL or lot No.	Section	Township	Range	Lot Idn	Feet from the	North/South line	Feet from the	East/West line	County
J	24	20 S	34 E		2270	SOUTH	1480	EAST	LEA

Bottom Hole Location If Different From Surface

UL or lot No.	Section	Township	Range	Lot Idn	Feet from the	North/South line	Feet from the	East/West line	County
B	13	20 S	34 E		330	NORTH	2210	EAST	LEA

Dedicated Acres 240	Joint or Infill	Consolidation Code	Order No.
------------------------	-----------------	--------------------	-----------

NO ALLOWABLE WILL BE ASSIGNED TO THIS COMPLETION UNTIL ALL INTERESTS HAVE BEEN CONSOLIDATED OR A NON-STANDARD UNIT HAS BEEN APPROVED BY THE DIVISION

NOTE:

1) Plane Coordinates shown hereon are Transverse Mercator Grid and Conform to the "New Mexico Coordinate System", New Mexico East Zone, North American Datum of 1927. Distances shown hereon are mean horizontal surface values.

Plane Coordinate
X = 753,045.5
Y = 575,450.3

(BHL)

2210'

13

N 5°40'23" W - 7986.1'

T-20-S, R-34-E
T-20-S, R-35-E

24

#37H (SL)

1480'

Plane Coordinate
X = 753,834.8
Y = 567,504.9

2270'

OPERATOR CERTIFICATION

I hereby certify that the information contained herein is true and complete to the best of my knowledge and belief, and that this organization either owns a working interest or unleased mineral interest in the land including the proposed bottom hole location or has a right to drill this well at this location pursuant to a contract with an owner of such a mineral or working interest, or to a voluntary pooling agreement or a compulsory pooling order heretofore entered by the division.

Signature: Barry W. Hunt
Date: 9/7/15

Printed Name: Barry W. Hunt

E-mail Address:

SURVEYOR CERTIFICATION

I hereby certify that the well location shown on this plat was plotted from field notes of actual surveys made by me or under my supervision, and that the same is true and correct to the best of my belief.

Date of Survey: June 26, 2015

Signature & Seal of Professional Surveyor: [Signature]

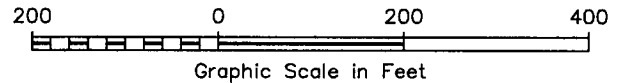
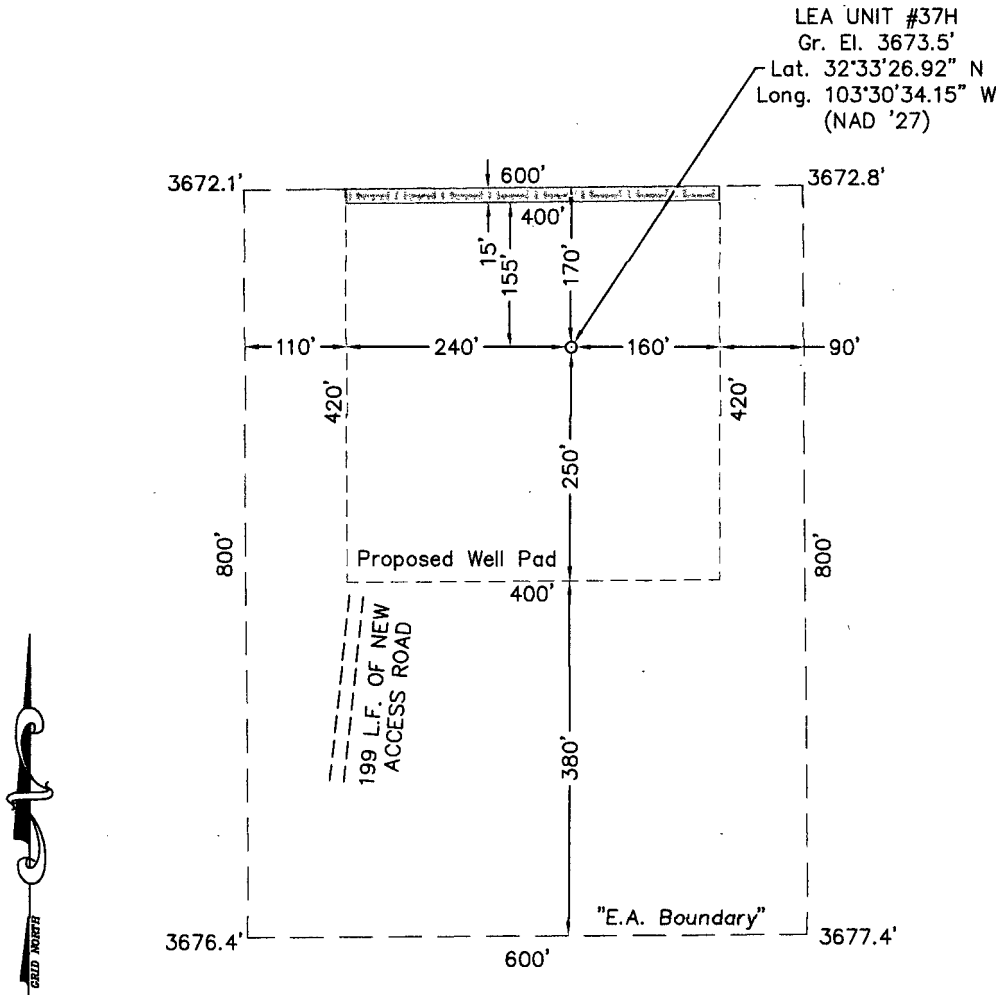
W.O. Num. 2015-0416-Y

Certificate No. Macon McDonald 12185

Scale
1" = 2000'
MAR 01 2016

SECTION 24, TOWNSHIP 20 SOUTH, RANGE 34 EAST, N.M.P.M. LEA COUNTY

2015-0416-X2



DRIVING DIRECTIONS

FROM THE INTERSECTION OF STATE HIGHWAY 18 AND U.S. HIGHWAY 62-180 IN HOBBS, NEW MEXICO, GO WEST AND SOUTHWEST ON U.S. HIGHWAY 62-180 23.6 MILES TO MARATHON ROAD / CO. RD. 27-A ON SOUTH (LEFT) SIDE OF THE HIGHWAY. THEN GO SOUTH 5.6 MILES TO A LEASE ROAD ON THE EAST (LEFT) SIDE OF THE ROAD, THEN GO EAST ON LEASE ROAD 0.7 MILE TO A POINT APPROXIMATELY 460 FEET SOUTH OF THE PROPOSED LOCATION.

LEGACY RESERVES OPERATING LP

LEA UNIT #37H

Located 2270' FSL & 1480' FEL, Section 24
Township 20 South, Range 34 East, N.M.P.M.
Lea County, New Mexico

Drawn By: SC/LRG

Date: July 9, 2015

Scale: 1" = 200'

Field Book: 587 / 56-57

Revision Date: 9-14-15

Quadrangle: Lea

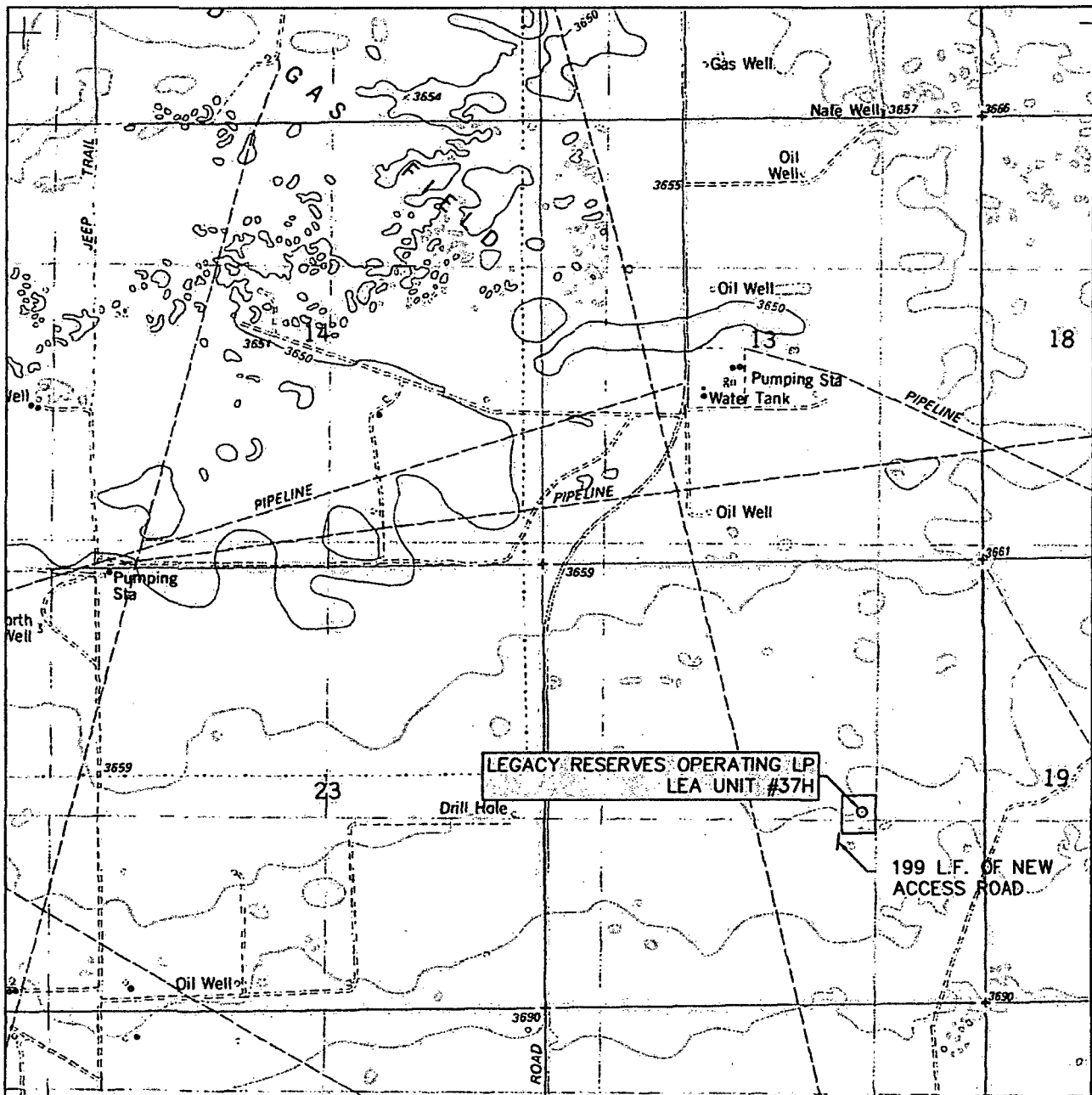
W.O. No: 2015-0416

Dwg. No.: L-2015-0416-X2



SURVEYORS - ENGINEERS - PLANNERS
110 W. LOUISIANA AVE., SUITE 110
MIDLAND, TEXAS 79701
(432) 687-0865 - FAX (432) 687-0868

LOCATION VERIFICATION MAP



SCALE: 1" = 2000'

CONTOUR INTERVAL:
LEA - 10'

SEC. 24 TWP. 20-S RGE. 34-E

SURVEY N.M.P.M.

COUNTY LEA

DESCRIPTION 2270' FSL & 1480' FEL

ELEVATION 3674'

OPERATOR LEGACY RESERVES OPERATING LP

LEASE LEA UNIT

U.S.G.S. TOPOGRAPHIC MAP
LEA



**WEST
COMPANY**
of Midland, LLC

FIRM REGISTRATION NUMBER: 100682-00
110 W. LOUISIANA, STE. 110
MIDLAND TEXAS, 79701
(432) 687-0865 - (432) 687-0868 FAX

Exhibit A+B

Access
+
One mile

3" = 1 mile

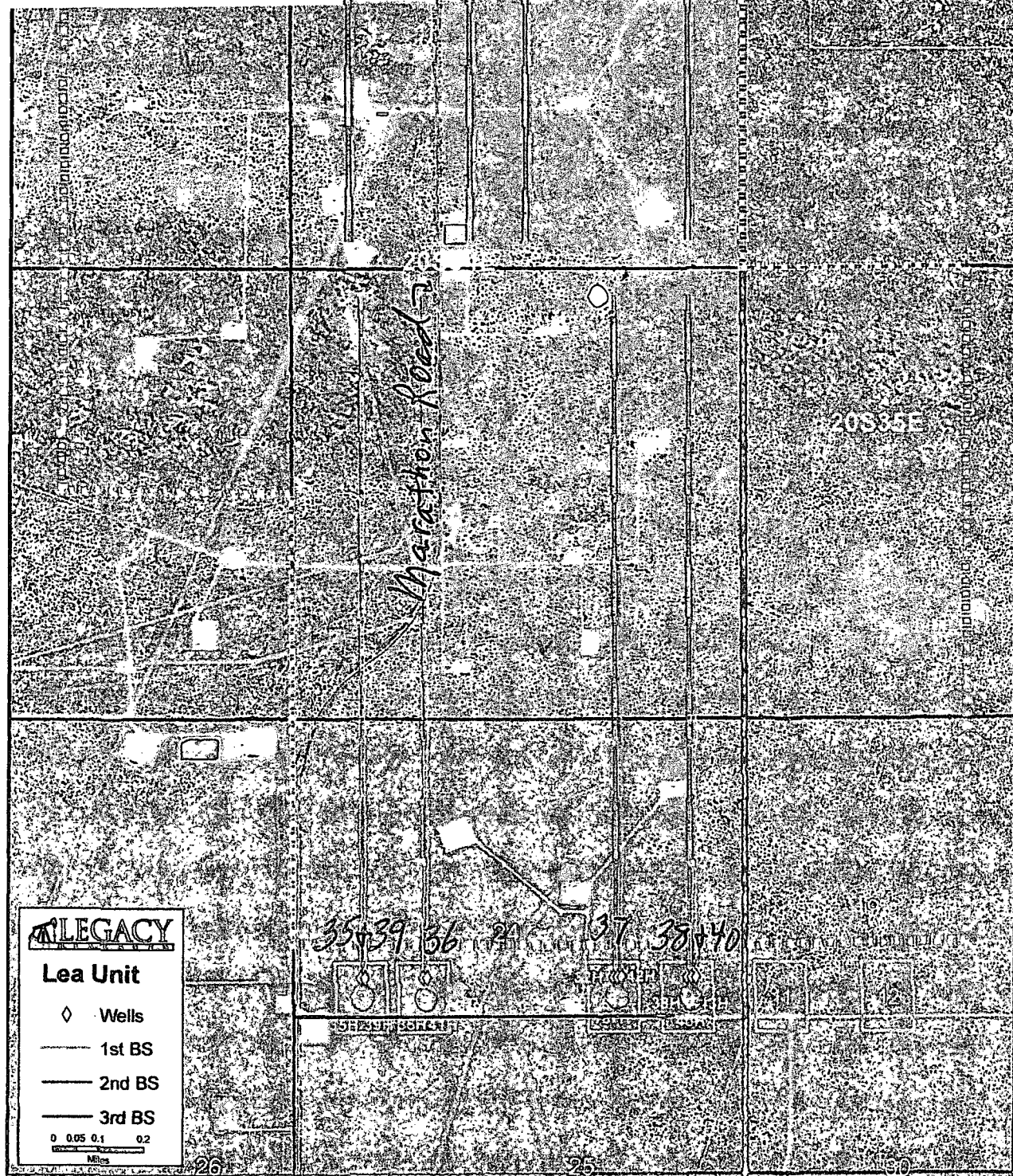
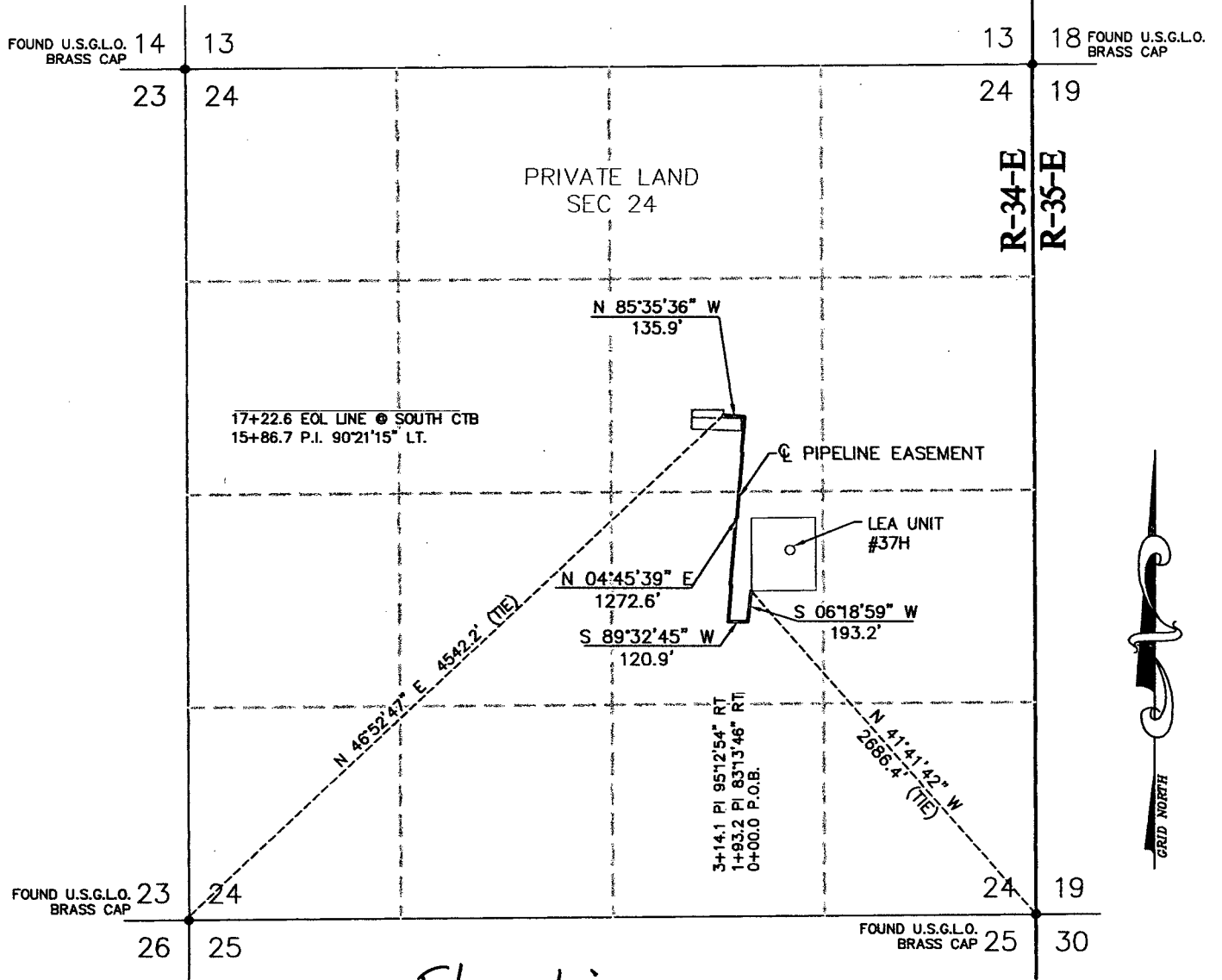


Exhibit E

SECTION 24, TOWNSHIP 20 SOUTH, RANGE 34 EAST, N.M.P.M.
LEA COUNTY NEW MEXICO



FlowLine

LEGAL DESCRIPTION

A STRIP OF LAND BEING 50 FEET WIDE, 1,722.6 FEET OR 0.326 MILES IN LENGTH AND BEING 25.0 FEET RIGHT AND 25.0 FEET LEFT OF THE ABOVE PLATTED CENTERLINE.

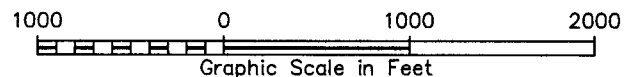
NOTE: The above platted centerline was created using data as provided by client and/or client's representative and has not been staked on the ground or in the field.



SURVEYORS - ENGINEERS - PLANNERS
110 W. LOUISIANA AVE., SUITE 110
MIDLAND, TEXAS 79701
(432) 687-0865 - FAX (432) 687-0868

LEGEND

- - DENOTES FOUND MONUMENT (AS DESCRIBED)
- - DENOTES PIPE LINE

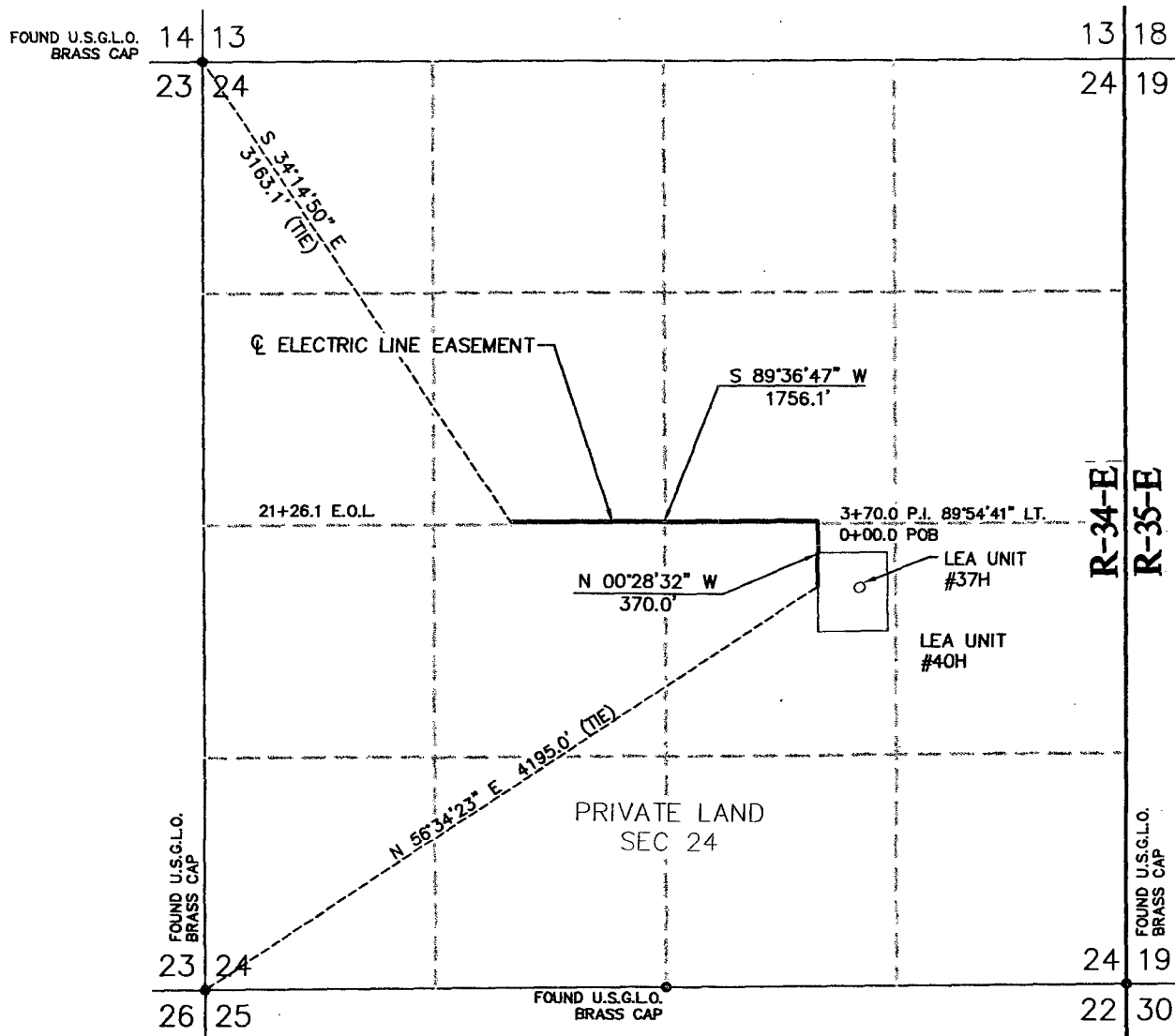


LEGACY RESERVES OPERATING LP

A PIPELINE EASEMENT LOCATED ON
PRIVATE LAND IN SECTION 24
TOWNSHIP 20 SOUTH, RANGE 34 EAST,
N.M.P.M., LEA COUNTY, NEW MEXICO

Survey Date: N/A	Sheet 1 of 1 Sheets
W.O. Number: 2015-0416	Drawn By: SC/LRG
Date: 9-14-2015	2015-0416-X4.DWG
Scale: 1" = 1000'	

SECTION 24, TOWNSHIP 20 SOUTH, RANGE 34 EAST, N.M.P.M.
LEA COUNTY NEW MEXICO



LEGEND

- - DENOTES FOUND MONUMENT (AS DESCRIBED)
— - DENOTES CENTERLINE ELECTRIC EASEMENT

LEGAL DESCRIPTION

A STRIP OF LAND BEING 50 FEET WIDE, 2,126.1 FEET OR 0.403 MILES IN LENGTH AND BEING 25.0 FEET RIGHT AND 25.0 FEET LEFT OF THE ABOVE PLATTED CENTERLINE.



LEGACY RESERVES OPERATING LP

AN ELECTRIC LINE EASEMENT LOCATED ON
FEE LAND IN SECTION 24
TOWNSHIP 20 SOUTH, RANGE 34 EAST,
N.M.P.M., LEA COUNTY, NEW MEXICO



SURVEYORS - ENGINEERS - PLANNERS
110 W. LOUISIANA AVE., SUITE 110
MIDLAND, TEXAS 79701
(432) 687-0865 - FAX (432) 687-0868

Survey Date: June 25, 2015

Sheet 1 of 1 Sheets

W.O. Number: 2015-0416

Drawn By: SC/LRG

Date: 9-14-2015

2015-0416-X5.DWG

Scale: 1" = 1000'