

District I  
1625 N. French Dr., Hobbs, NM 88240  
Phone: (575) 393-6161 Fax: (575) 393-0730  
District II  
511 S. First St., Artesia, NM 88210  
Phone: (575) 748-1283 Fax: (575) 748-9720  
District III  
1000 Rio Brazos Road, Aztec, NM 87410  
Phone: (505) 334-6178 Fax: (505) 334-6170  
District IV  
1220 S. St. Francis Dr., Santa Fe, NM 87505  
Phone: (505) 476-3460 Fax: (505) 476-3462

State of New Mexico  
Energy, Minerals & Natural Resources Department  
OIL CONSERVATION DIVISION  
1220 South St. Francis Dr.  
Santa Fe, NM 87505

HOBBS  
APR 21 2016

Form C-102  
Revised August 1, 2011  
Submit one copy to appropriate  
District Office

RECEIVED AMENDED REPORT

## WELL LOCATION AND ACREAGE DEDICATION PLAT

<sup>1</sup> API Number 30-025-43176	<sup>2</sup> Pool Code 97903	<sup>3</sup> Pool Name WC-025 G-08 S253235G; Lwr Bone Spring
<sup>4</sup> Property Code 316614	<sup>5</sup> Property Name ARABIAN 30-19 FED COM	<sup>6</sup> Well Number 1H
<sup>7</sup> OGRID No. 6137	<sup>8</sup> Operator Name DEVON ENERGY PRODUCTION COMPANY, L.P.	<sup>9</sup> Elevation 3354.8

<sup>10</sup> Surface Location

UL or lot no.	Section	Township	Range	Lot Idn	Feet from the	North/South line	Feet from the	East/West line	County
2/E	30	25 S	32 E		2575	NORTH	660	WEST	LEA

<sup>11</sup> Bottom Hole Location If Different From Surface

UL or lot no.	Section	Township	Range	Lot Idn	Feet from the	North/South line	Feet from the	East/West line	County
1/D	19	25 S	32 E		340	NORTH	670	WEST	LEA

<sup>12</sup> Dedicated Acres	<sup>13</sup> Joint or Infill	<sup>14</sup> Consolidation Code	<sup>15</sup> Order No.
238.7678			

No allowable will be assigned to this completion until all interests have been consolidated or a non-standard unit has been approved by the division.

<p>NW CORNER SEC. 19 LAT. = 32.1230606°N LONG. = 103.7230333°W NMSP EAST (FT) N = 409040.55 E = 730271.66</p> <p>W/4 CORNER SEC. 19 SCALED</p> <p>SECTION CORNER LAT. = 32.1085514°N LONG. = 103.7230430°W NMSP EAST (FT) N = 403762.33 E = 730298.57</p> <p>W/4 CORNER SEC. 30 LAT. = 32.1013031°N LONG. = 103.7230552°W NMSP EAST (FT) N = 401125.49 E = 730309.71</p> <p>SW CORNER SEC. 30 LAT. = 32.0940530°N LONG. = 103.7230584°W NMSP EAST (FT) N = 398488.02 E = 730323.64</p>		<p>670' BOTTOM OF HOLE</p> <p>1 40.05' AC.</p> <p>2 BOTTOM OF HOLE LAT. = 32.1221306°N LONG. = 103.7208703°W NMSP EAST (FT) N = 408706.03 E = 730913.23</p> <p>3 NOTE: LATITUDE AND LONGITUDE COORDINATES ARE SHOWN USING THE NORTH AMERICAN DATUM OF 1983 (NAD83). LISTED NEW MEXICO STATE PLANE EAST COORDINATES ARE GRID (NAD83). BASIS OF BEARING AND DISTANCES USED ARE NEW MEXICO STATE PLANE EAST COORDINATES MODIFIED TO THE SURFACE.</p> <p>4 QUARTER CORNER LAT. = 32.1085815°N LONG. = 103.7144790°W NMSP EAST (FT) N = 403788.40 E = 732950.18</p> <p>ARABIAN 30-19 FED COM 1H ELEV. = 3354.8' LAT. = 32.1014820°N (NAD83) LONG. = 103.7209239°W NMSP EAST (FT) N = 401194.31 E = 730969.30</p> <p>2575' SURFACE LOCATION</p> <p>660' SEC. 30</p>		<p>N/4 CORNER SEC. 19 LAT. = 32.1230778°N LONG. = 103.7144822°W NMSP EAST (FT) N = 409061.91 E = 732918.90</p> <p>E/4 CORNER SEC. 19 LAT. = 32.1158295°N LONG. = 103.7058901°W NMSP EAST (FT) N = 406440.48 E = 735594.22</p> <p>SECTION CORNER LAT. = 32.1085793°N LONG. = 103.7058791°W NMSP EAST (FT) N = 403802.97 E = 735612.97</p> <p>E/4 CORNER SEC. 30 LAT. = 32.1013296°N LONG. = 103.7061040°W NMSP EAST (FT) N = 401165.67 E = 735631.92</p> <p>SE CORNER SEC. 30 LAT. = 32.0941052°N LONG. = 103.7061040°W NMSP EAST (FT) N = 398537.15 E = 735573.96</p>	
--	--	---	--	---	--

**<sup>17</sup> OPERATOR CERTIFICATION**

I hereby certify that the information contained herein is true and complete to the best of my knowledge and belief, and that this organization either owns a working interest or unleased mineral interest in the land including the proposed bottom hole location or has a right to drill this well at this location pursuant to a contract with an owner of such a mineral or working interest, or to a voluntary pooling agreement or a compulsory pooling order heretofore entered by the division.

*Linda Good* 1/28/2016  
Signature Date

Linda Good  
Printed Name

linda.good@div.com  
E-mail Address

**<sup>18</sup> SURVEYOR CERTIFICATION**

I hereby certify that the well location shown on this plat was plotted from field notes of actual surveys made by me or under my supervision, and that the same is true and correct to the best of my belief.

JANUARY 22 2016  
Date of Survey

*FILMON F. JARAMILLO*  
Signature and Seal of Professional Surveyor

Certificate Number: FILMON F. JARAMILLO, PLS 12797  
SURVEY NO. 3589B

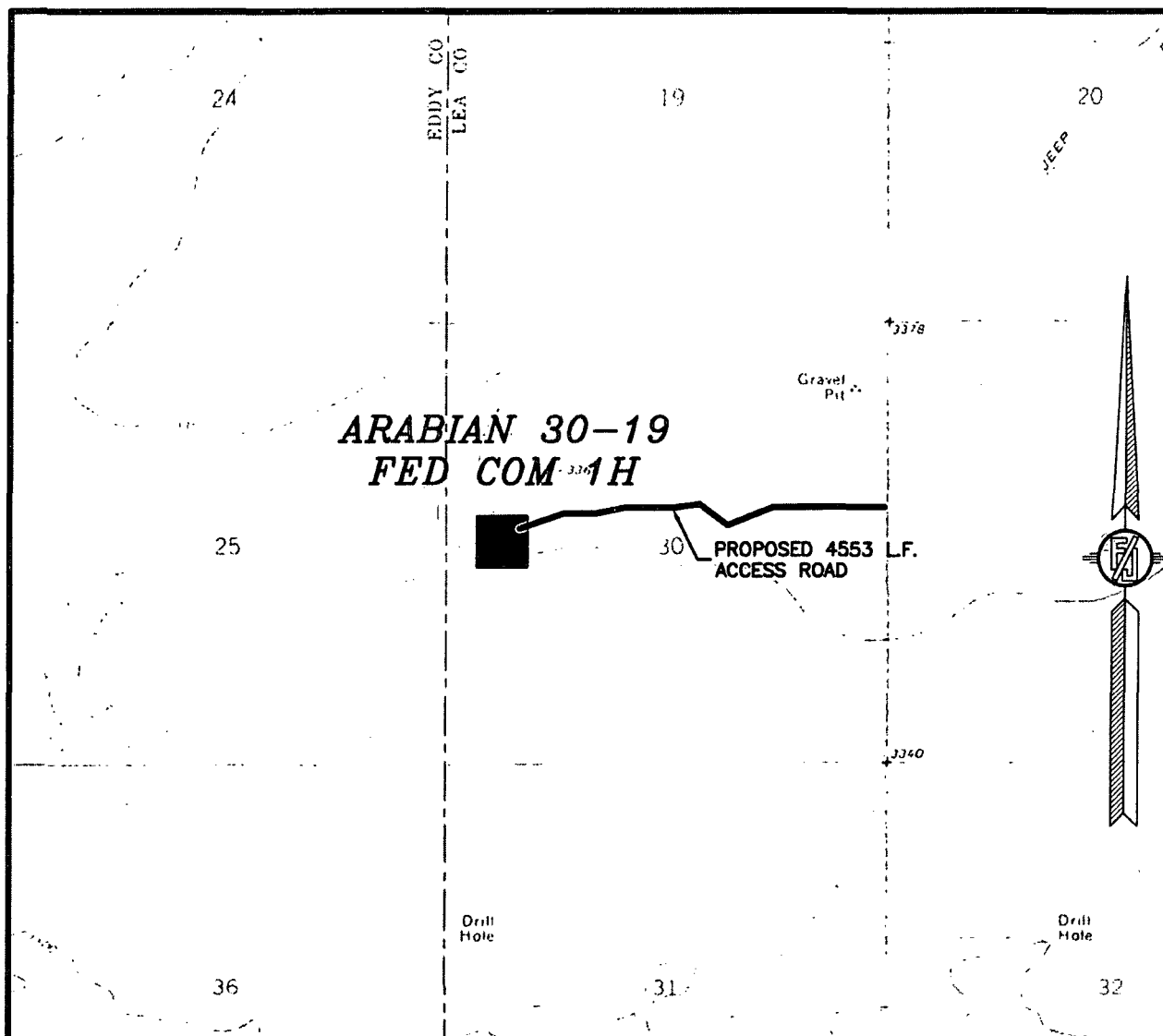
APR 22 2016

DEVON 4" POLY SURF



CARLSBAD, NEW MEXICO

SECTION 30, TOWNSHIP 25 SOUTH, RANGE 32 EAST, N.M.P.M.  
LEA COUNTY, STATE OF NEW MEXICO  
LOCATION VERIFICATION MAP



USGS QUAD MAP:  
PADUCA BREAKS WEST

NOT TO SCALE

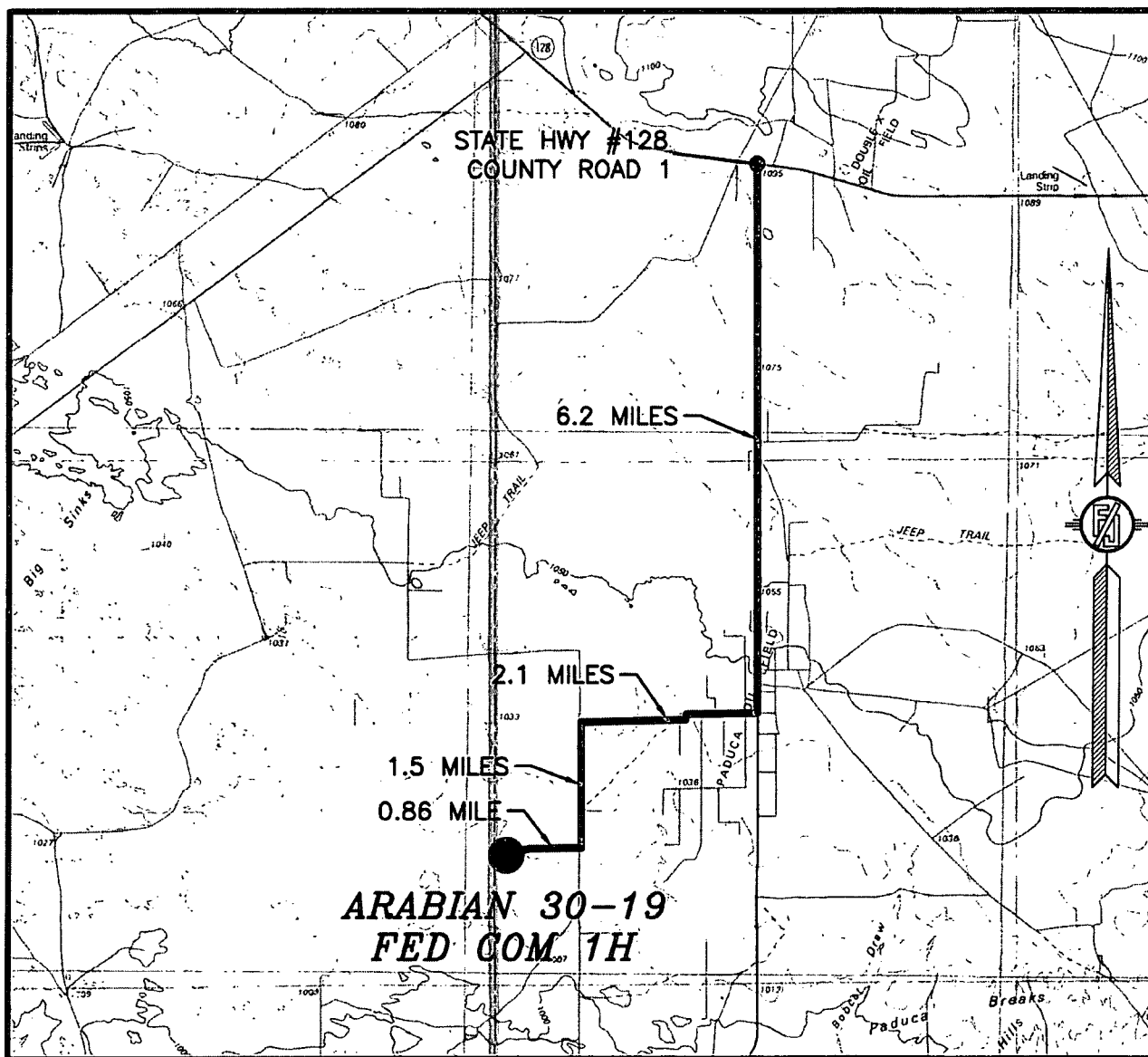
DEVON ENERGY PRODUCTION COMPANY, L.P.  
**ARABIAN 30-19 FED COM 1H**  
LOCATED 2575 FT. FROM THE NORTH LINE  
AND 660 FT. FROM THE WEST LINE OF  
SECTION 30, TOWNSHIP 25 SOUTH,  
RANGE 32 EAST, N.M.P.M.  
LEA COUNTY, STATE OF NEW MEXICO

JANUARY 27, 2016

MADRON SURVEYING, INC. 301 SOUTH CANAL (575) 234-3341 CARLSBAD, NEW MEXICO

SURVEY NO. 3589B

SECTION 30, TOWNSHIP 25 SOUTH, RANGE 32 EAST, N.M.P.M.  
LEA COUNTY, STATE OF NEW MEXICO  
VICINITY MAP



DISTANCES IN MILES

NOT TO SCALE

**DIRECTIONS TO LOCATION**

FROM THE INTERSECTION OF STATE HWY #128 & ORLA HWY (COUNTY ROAD #1) GO SOUTH ON ORLA HWY APPROX. 6.2 MILES TO MONSANTO ROAD, TURN RIGHT (WEST) ON MONSANTO ROAD GO APPROX 2.1 MILES TO A "T" INTERSECTION, TURN LEFT (SOUTH) ON LEASE ROAD GO APPROX 1.5 MILES TO A ROAD LATH WITH RED & WHITE FLAGGING ON RIGHT SIDE OF ROAD (WEST), GO WEST FOLLOW ROAD LATHS WEST APPROX. 0.86 MILE TO LOCATION.

DEVON ENERGY PRODUCTION COMPANY, L.P.

**ARABIAN 30-19 FED COM 1H**

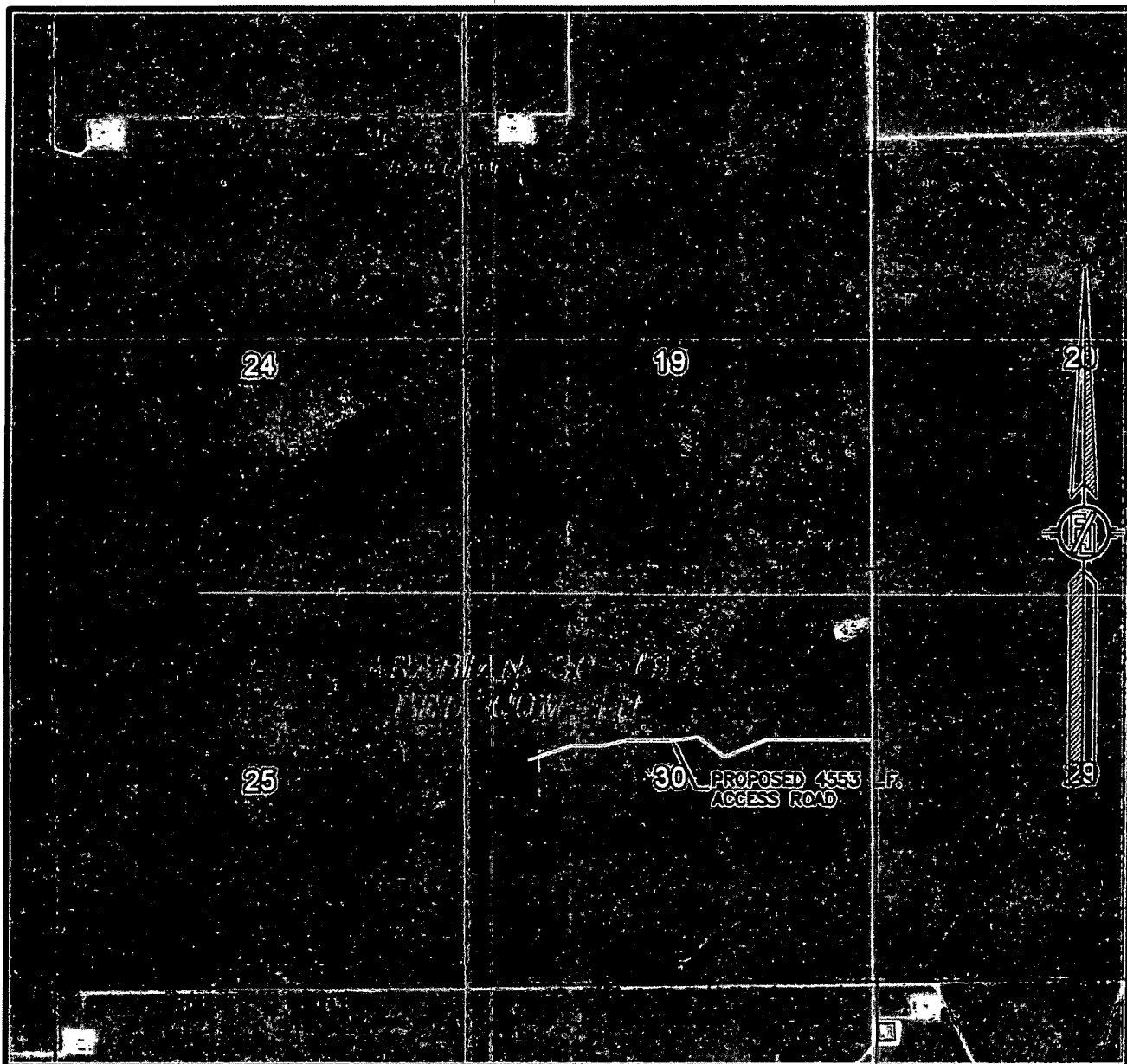
LOCATED 2575 FT. FROM THE NORTH LINE  
AND 660 FT. FROM THE WEST LINE OF  
SECTION 30, TOWNSHIP 25 SOUTH,  
RANGE 32 EAST, N.M.P.M.  
LEA COUNTY, STATE OF NEW MEXICO

JANUARY 27, 2016

MADRON SURVEYING, INC. 301 SOUTH CANAL (575) 234-3341

SURVEY NO. 3589B  
CARLSBAD, NEW MEXICO

SECTION 30, TOWNSHIP 25 SOUTH, RANGE 32 EAST, N.M.P.M.  
LEA COUNTY, STATE OF NEW MEXICO  
AERIAL PHOTO



NOT TO SCALE  
AERIAL PHOTO:  
GOOGLE EARTH  
FEB. 2014

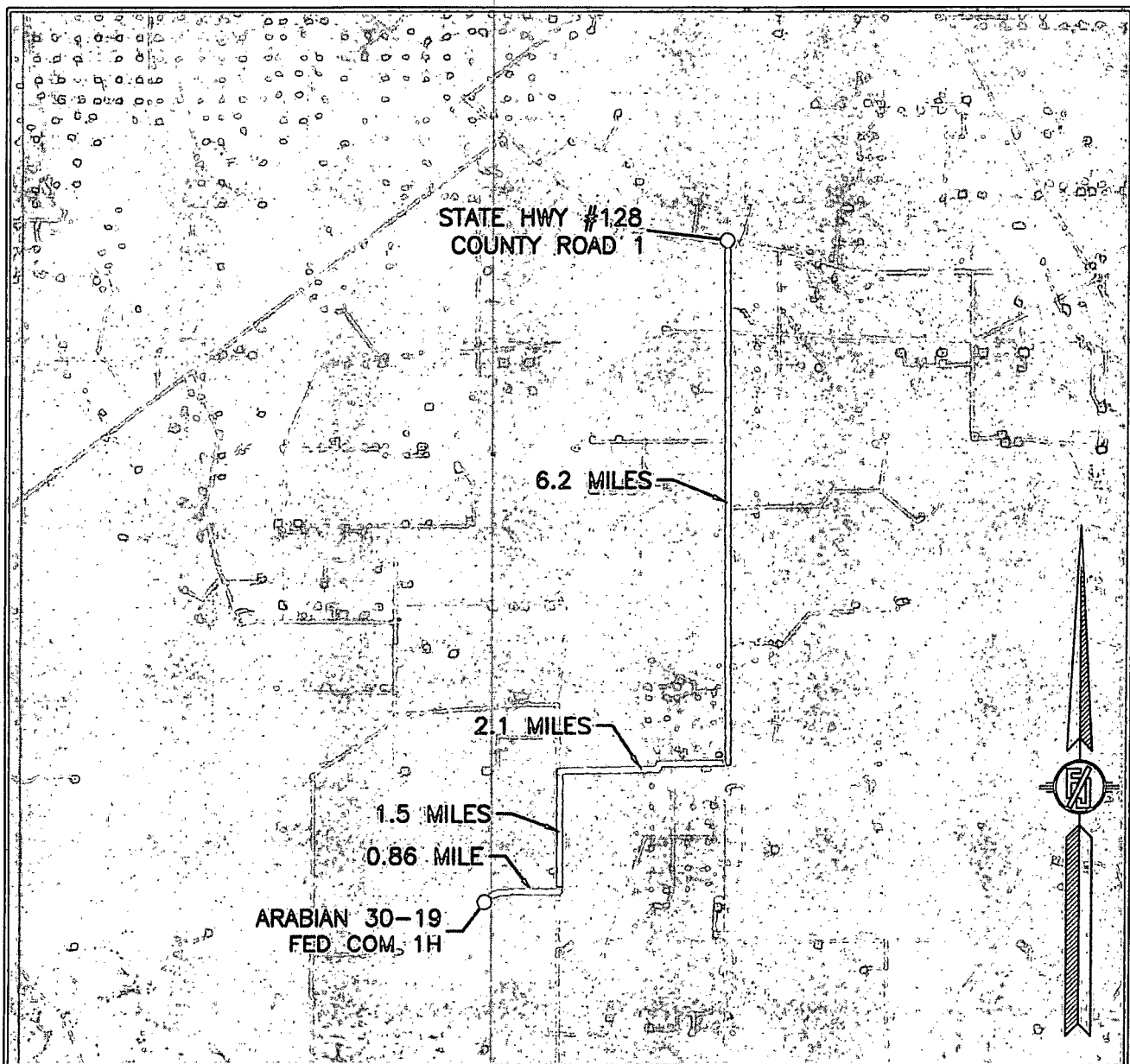
DEVON ENERGY PRODUCTION COMPANY, L.P.  
**ARABIAN 30-19 FED COM 1H**  
LOCATED 2575 FT. FROM THE NORTH LINE  
AND 660 FT. FROM THE WEST LINE OF  
SECTION 30, TOWNSHIP 25 SOUTH,  
RANGE 32 EAST, N.M.P.M.  
LEA COUNTY, STATE OF NEW MEXICO

JANUARY 27, 2016

SURVEY NO. 3589B

MADRON SURVEYING, INC. 301 SOUTH CANAL (575) 234-3341 CARLSBAD, NEW MEXICO

SECTION 30, TOWNSHIP 25 SOUTH, RANGE 32 EAST, N.M.P.M.  
LEA COUNTY, STATE OF NEW MEXICO  
**AERIAL ACCESS ROUTE MAP**



NOT TO SCALE  
AERIAL PHOTO:  
GOOGLE EARTH  
FEB. 2014

**DEVON ENERGY PRODUCTION COMPANY, L.P.**  
**ARABIAN 30-19 FED COM 1H**  
LOCATED 2575 FT. FROM THE NORTH LINE  
AND 660 FT. FROM THE WEST LINE OF  
SECTION 30, TOWNSHIP 25 SOUTH,  
RANGE 32 EAST, N.M.P.M.  
LEA COUNTY, STATE OF NEW MEXICO

JANUARY 27, 2016

SURVEY NO. 3589B

MADRON SURVEYING, INC. 301 SOUTH CANAL (575) 234-3341 CARLSBAD, NEW MEXICO

# One Mile Radius Map

Estimated distances to nearest wellbores:

\*From SHL: Coltrane BQR State Com 1H 1365 ft WSW  
 \*From BHL: Cotton Draw Unit 157H\_ST 670 ft N

25S 32E

23

26

**devon**

Arabian 30-19 Fed 1H

1 Mile Radius Map

0 1,937  
FEET

WELL SYMBOLS  
 DRY AND ABANDONED WELL  
 GAS PRODUCING WELL  
 OIL PRODUCING WELL  
 PROPOSED  
 DRILLING WELL SPUD  
 AT TD

January 22, 2015

