

DISTRICT I
1825 N. FRENCH DR., HOBBS, NM 88240
Phone: (575) 393-6161 Fax: (575) 393-9720

DISTRICT II
811 S. FIRST ST., ARTESIA, NM 88210
Phone: (505) 748-1283 Fax: (505) 748-9720

DISTRICT III
1000 RIO BRAZOS RD., AZTEC, NM 87410
Phone: (505) 334-6178 Fax: (505) 334-6170

DISTRICT IV
1220 S. ST. FRANCIS DR., SANTA FE, NM 87505
Phone: (505) 476-3480 Fax: (505) 476-3482

State of New Mexico
Energy, Minerals & Natural Resources Department
OIL CONSERVATION DIVISION
1220 SOUTH ST. FRANCIS DR.
Santa Fe, New Mexico 87505

Form C-102
Revised August 1, 2011
Submit one copy to appropriate
District Office

APR 21 2016

☐ AMENDED REPORT

WELL LOCATION AND ACREAGE DEDICATION PLAT

RECEIVED

API Number 30-025- 43170	Pool Code 97899	Pool Name WC-025 G-06 S253206M; Bone Spring
Property Code 39881	Property Name AZORES FEDERAL	Well Number 7H
OGRID No. 217955	Operator Name COG PRODUCTION, LLC	Elevation 3491.3'

Surface Location

UL or lot No.	Section	Township	Range	Lot Idn	Feet from the	North/South line	Feet from the	East/West line	County
B	32	24-S	32-E		210	NORTH	2550	EAST	LEA

Bottom Hole Location If Different From Surface

UL or lot No.	Section	Township	Range	Lot Idn	Feet from the	North/South line	Feet from the	East/West line	County
C	29	24-S	32-E		330	NORTH	2500	WEST	LEA

Dedicated Acres	Joint or Infill	Consolidation Code	Order No.
160			

NO ALLOWABLE WILL BE ASSIGNED TO THIS COMPLETION UNTIL ALL INTERESTS HAVE BEEN CONSOLIDATED
OR A NON-STANDARD UNIT HAS BEEN APPROVED BY THE DIVISION

NAD 27
PROPOSED BOTTOM HOLE LOCATION
Y=435119.0 N
X=696944.8 E
LAT.=32.194656° N
LONG.=103.696674° W

NAD 27
SURFACE LOCATION
Y=429960.2 N
X=697210.2 E
LAT.=32.180472° N
LONG.=103.695915° W

OPERATOR CERTIFICATION

I hereby certify that the information herein is true and complete to the best of my knowledge and belief, and that this organization either owns a working interest or unleased mineral interest in the land including the proposed bottom hole location or has a right to drill this well at this location pursuant to a contract with an owner of such mineral or working interest, or to a voluntary pooling agreement or a compulsory pooling order heretofore entered by the division.

Melanie J Wilson 2/10/16
Signature Date
Melanie J Wilson
Printed Name
mwilson@concho.com
E-mail Address

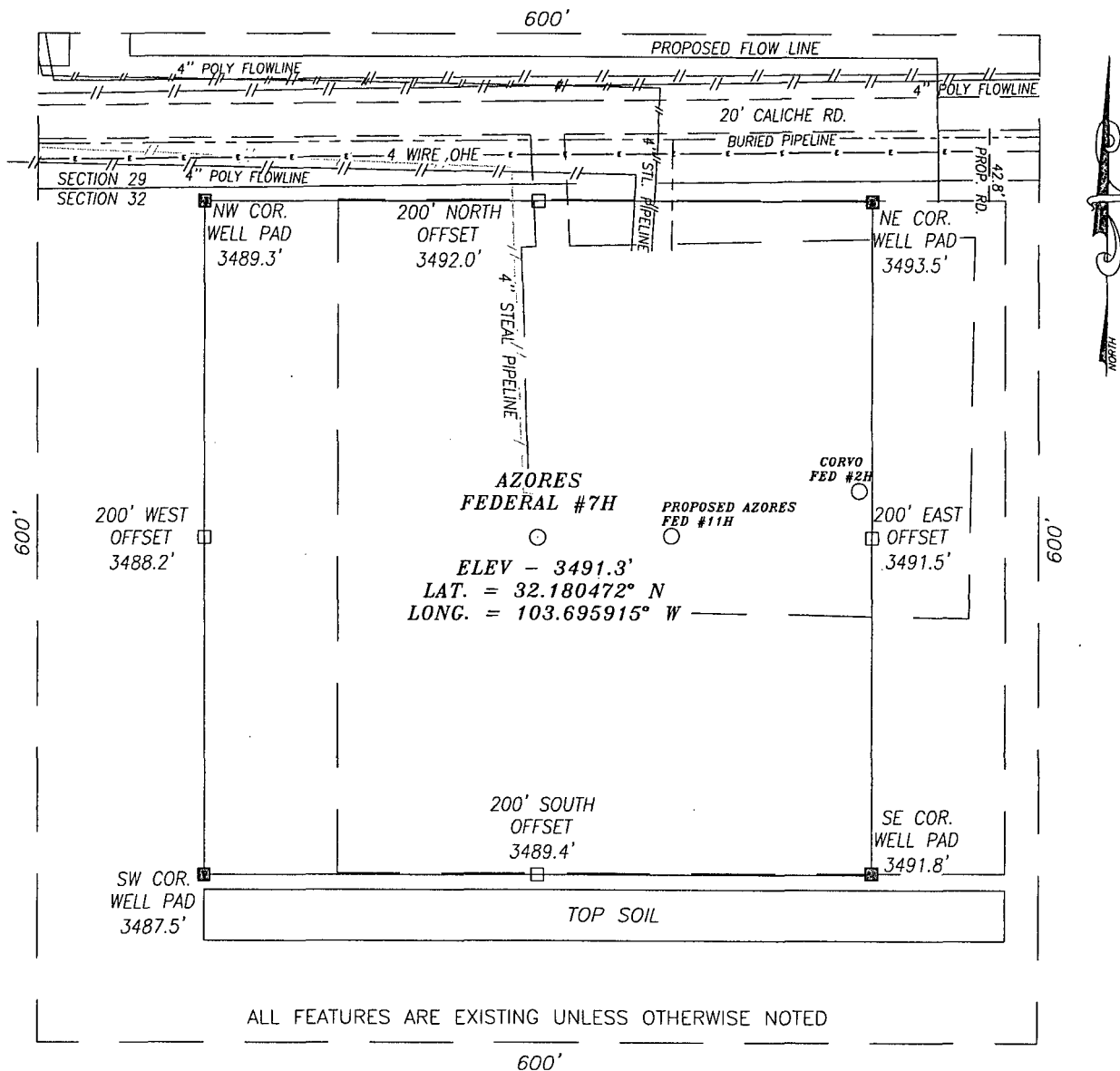
SURVEYOR CERTIFICATION

I hereby certify that the well location shown on this plat was plotted from field notes of actual surveys made by me or under my supervision, and that the same is true and correct to the best of my belief.

JANUARY 26, 2016
Date of Survey
Signature & Seal of Professional Surveyor
Chad L. Harcrow 2/3/16
Certificate No. CHAD HARCROW 17777
W.O. # 15-1373 DRAWN BY: AF

APR 25 2016

SECTION 32, TOWNSHIP 24 SOUTH, RANGE 32 EAST, N.M.P.M.,
LEA COUNTY NEW MEXICO



DIRECTIONS TO LOCATION
FROM THE INTERSECTION HWY 128 & CR-1 (ORLA RD) GO SOUTH ON
ORLA RD. FOR APPROX. 2.2 MILES; THEN TURN RIGHT (WEST) AND GO
APPROX. 1.4 MILES TO THE EXISTING CORVO FED #2H PAD.
PROPOSED WELL IS APPROX. 195' WEST.

HARCROW SURVEYING, LLC
2314 W. MAIN ST, ARTESIA, N.M. 88210
PH: (575) 746-2158 FAX: (575) 746-2158
c.harcrow@harcrowsurveying.com

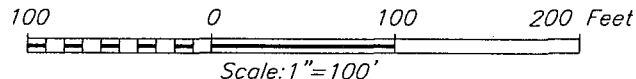


CERTIFICATION
I, CHAD HARCROW, A NEW MEXICO REGISTERED PROFESSIONAL SURVEYOR CERTIFY
THAT I DIRECTED AND AM RESPONSIBLE FOR THIS SURVEY, THAT THIS SURVEY IS
TRUE AND CORRECT TO THE BEST OF MY KNOWLEDGE AND BELIEF, AND THIS
SURVEY AND PLAT MEET THE MINIMUM STANDARDS FOR SURVEYING IN NEW
MEXICO.



Chad Harcrow
CHAD HARCROW N.M.P.S. NO. 17777

2/3/16
DATE



COG PRODUCTION, LLC

AZORES FEDERAL #7H WELL
LOCATED 210 FEET FROM THE NORTH LINE
AND 2550 FEET FROM THE EAST LINE OF SECTION 32,
TOWNSHIP 24 SOUTH, RANGE 32 EAST, N.M.P.M.,
LEA COUNTY, NEW MEXICO

SURVEY DATE: JAN. 26, 2016

PAGE: 1 OF 1

DRAFTING DATE: FEB. 01, 2016

APPROVED BY: CH

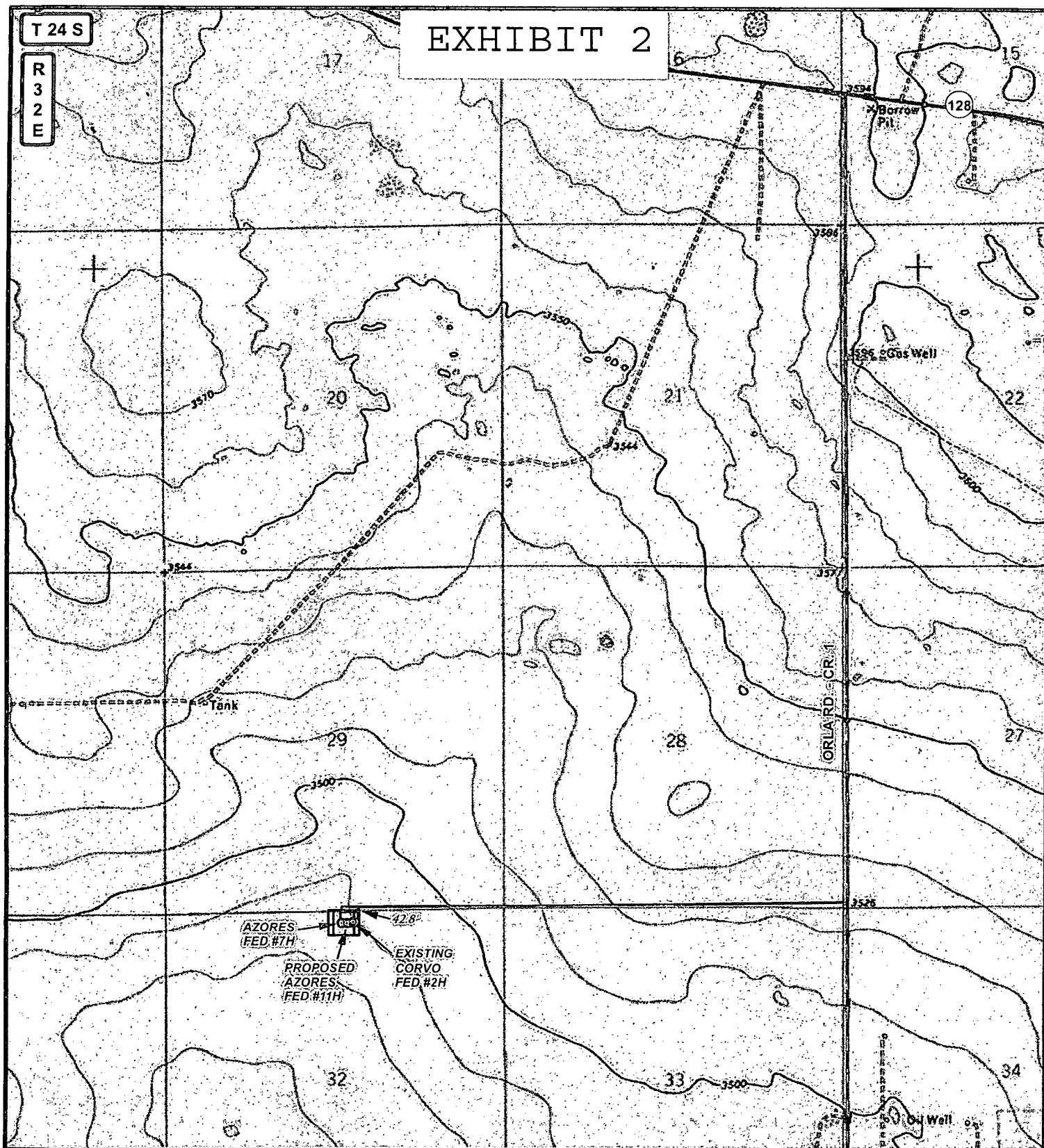
DRAWN BY: AF

FILE: 15-1373

T 24 S

R 32 E

EXHIBIT 2



LEGEND

○ WELL

□ WELLPAD

— EXISTING ROAD

— PROPOSED ROAD

AZORES FEDERAL #7H

SEC: 32 TWP: 24 S. RGE: 32 E. ELEVATION: 3491.3'

STATE: NEW MEXICO COUNTY: LEA 210' FNL & 2550' FEL

W.O. # 15-1373 LEASE: AZORES FED SURVEY: N.M.P.M

0 2,500 5,000 FEET

0 0.125 0.25 0.5 Miles 1 IN = 2,000 FT

LOCATION MAP

TOPO

02/02/2016

A.F

COG PRODUCTION, LLC

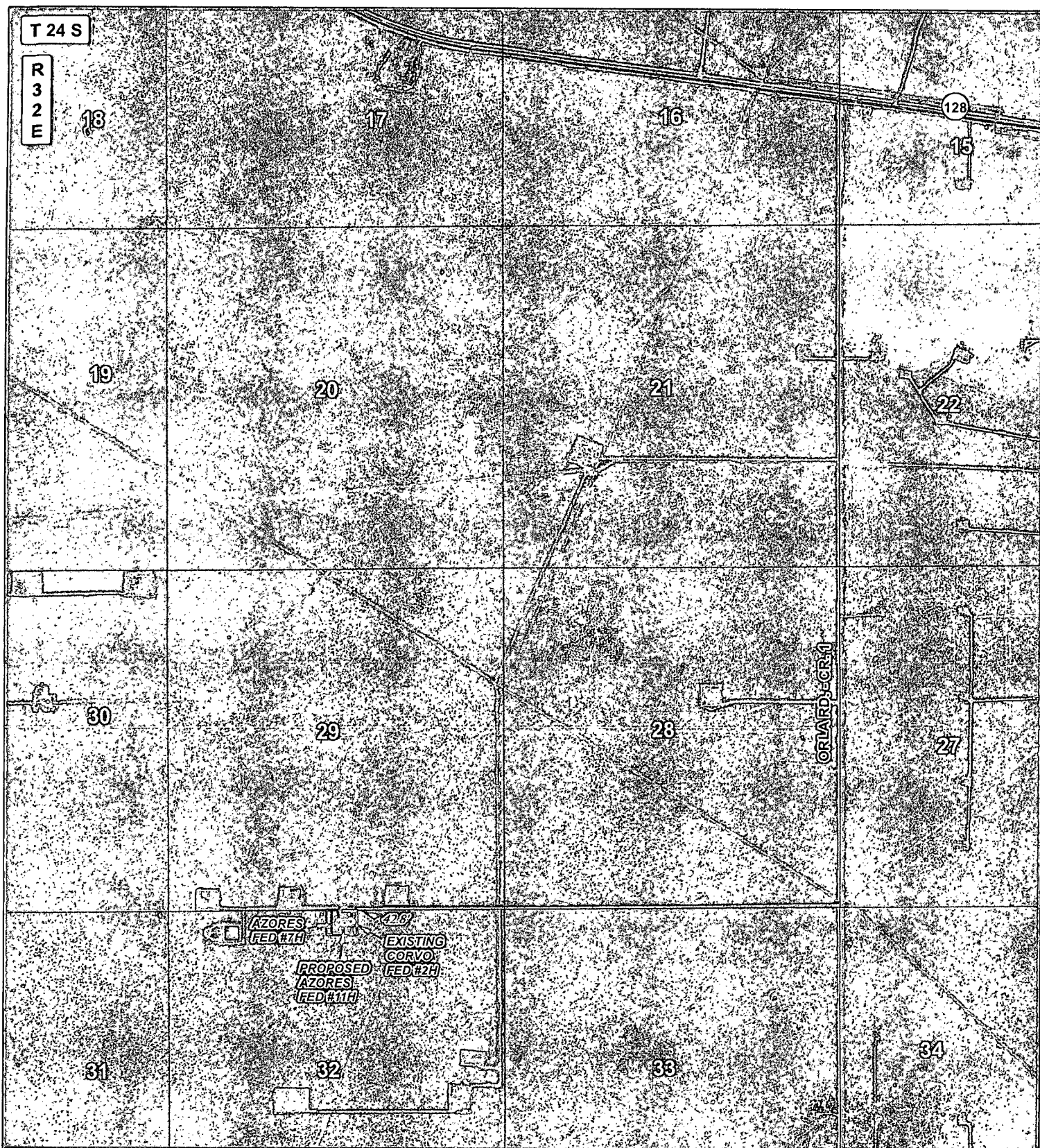


HARCROW SURVEYING, LLC.

2314 W. MAIN ST, ARTESIA, NM 88210

PH: (575) 746-2158 FAX: (575) 746-2158

c.harcrow@harcrowsurveying.com



LEGEND

○ WELL

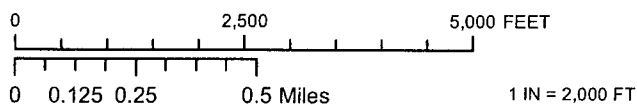
□ WELLPAD

— EXISTING ROAD

— PROPOSED ROAD

AZORES FEDERAL #7H

SEC: 32	TWP: 24 S.	RGE: 32 E.	ELEVATION: 3491.3'
STATE: NEW MEXICO	COUNTY: LEA	210' FNL & 2550' FEL	
W.O. # 15-1373	LEASE: AZORES FED	SURVEY: N.M.P.M	



LOCATION MAP

IMAGERY

02/02/2016

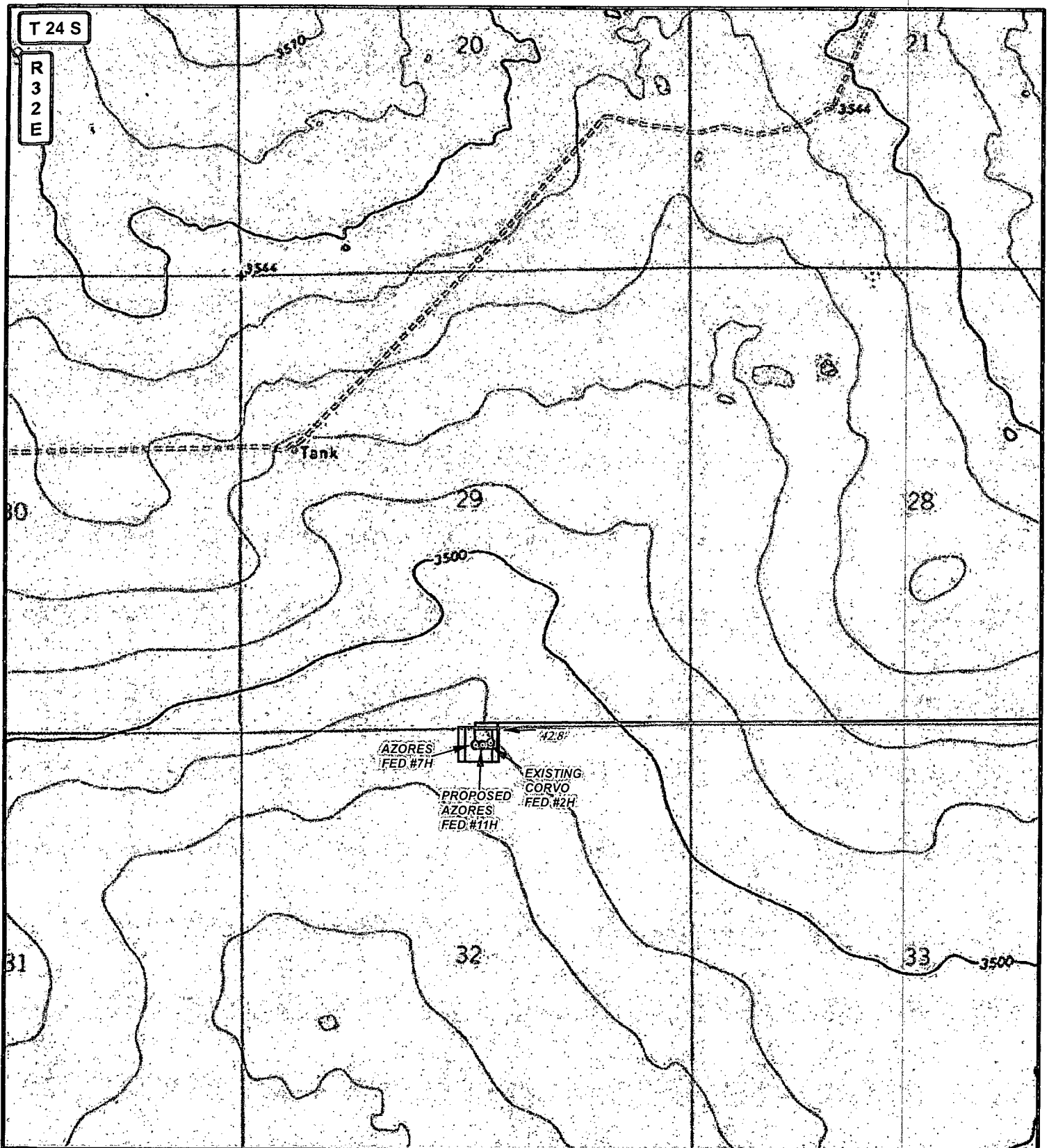
A.F



COG PRODUCTION, LLC



HARCROW SURVEYING, LLC.
2314 W. MAIN ST, ARTESIA, NM 88210
PH: (575) 746-2158 FAX: (575) 746-2158
c.harcrow@harcrowsurveying.com



LEGEND

- WELL
- WELLPAD
- EXISTING ROAD
- PROPOSED ROAD

AZORES FEDERAL #7H

SEC: 32	TWP: 24 S.	RGE: 32 E.	ELEVATION: 3491.3'
STATE: NEW MEXICO	COUNTY: LEA	210' FNL & 2550' FEL	
W.O. # 15-1373	LEASE: AZORES FED	SURVEY: N.M.P.M	

0 2,500 FEET

0 0.1 0.2 0.4 Miles

1 IN = 1,500 FT

LOCATION MAP

TOPO ROAD

02/02/2016

A.F



COG PRODUCTION, LLC



HARCROW SURVEYING, LLC.
2314 W. MAIN ST, ARTESIA, NM 88210
PH: (575) 746-2158 FAX: (575) 746-2158
c.harcrow@harcrowsurveying.com

T 24 S

R
3
2
E

30

29

28

AZORES
FED #7H

PROPOSED
AZORES
FED #11H

EXISTING
CORVO
FED #2H

32

31

33

LEGEND

○ WELL

□ WELLPAD

— EXISTING ROAD

— PROPOSED ROAD

AZORES FEDERAL #7H

SEC: 32 TWP: 24 S. RGE: 32 E. ELEVATION: 3491.3'

STATE: NEW MEXICO COUNTY: LEA 210' FNL & 2550' FEL

W.O. # 15-1373 LEASE: AZORES FED SURVEY: N.M.P.M

0 2,500 FEET

0 0.05 0.1 0.2 Miles

1 IN = 1,000 FT

LOCATION MAP

IMAGERY ROAD

02/02/2016

A.F



COG PRODUCTION, LLC

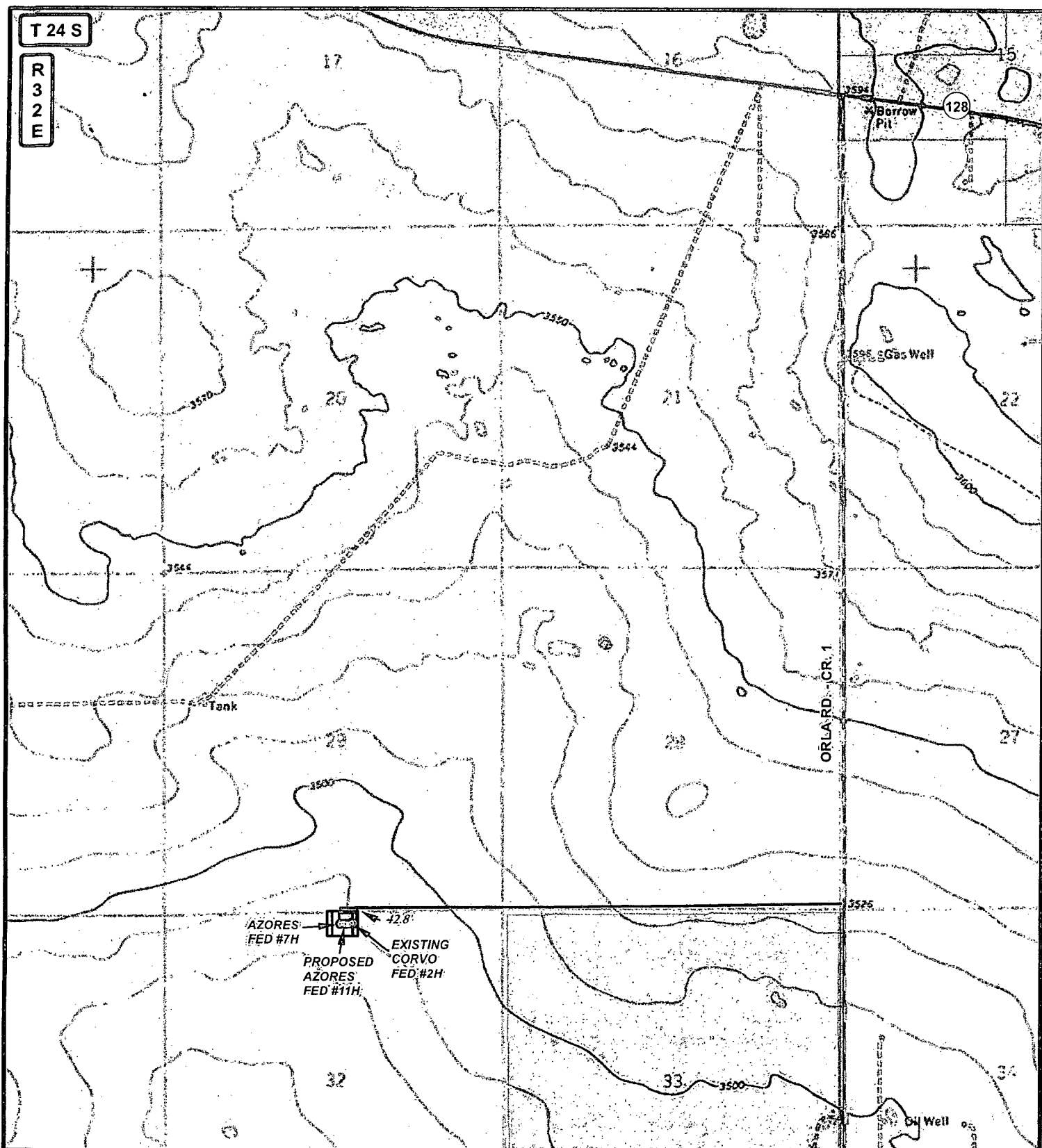


HARCROW SURVEYING, LLC.

2314 W. MAIN ST, ARTESIA, NM 88210

PH: (575) 746-2158 FAX: (575) 746-2158

c.harcrow@harcrowsurveying.com

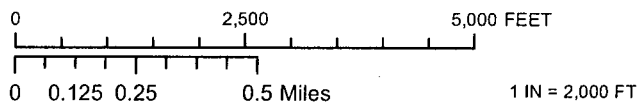


LEGEND

- WELL
- WELLPAD
- EXISTING ROAD
- PROPOSED ROAD
- PRIVATE
- STATE OF NM
- US BLM

AZORES FEDERAL #7H

SEC: 32	TWP: 24 S.	RGE: 32 E.	ELEVATION: 3491.3'
STATE: NEW MEXICO		COUNTY: LEA	210' FNL & 2550' FEL
W.O. # 15-1373		LEASE: AZORES FED	SURVEY: N.M.P.M



LOCATION MAP

LAND STATUS

02/02/2016

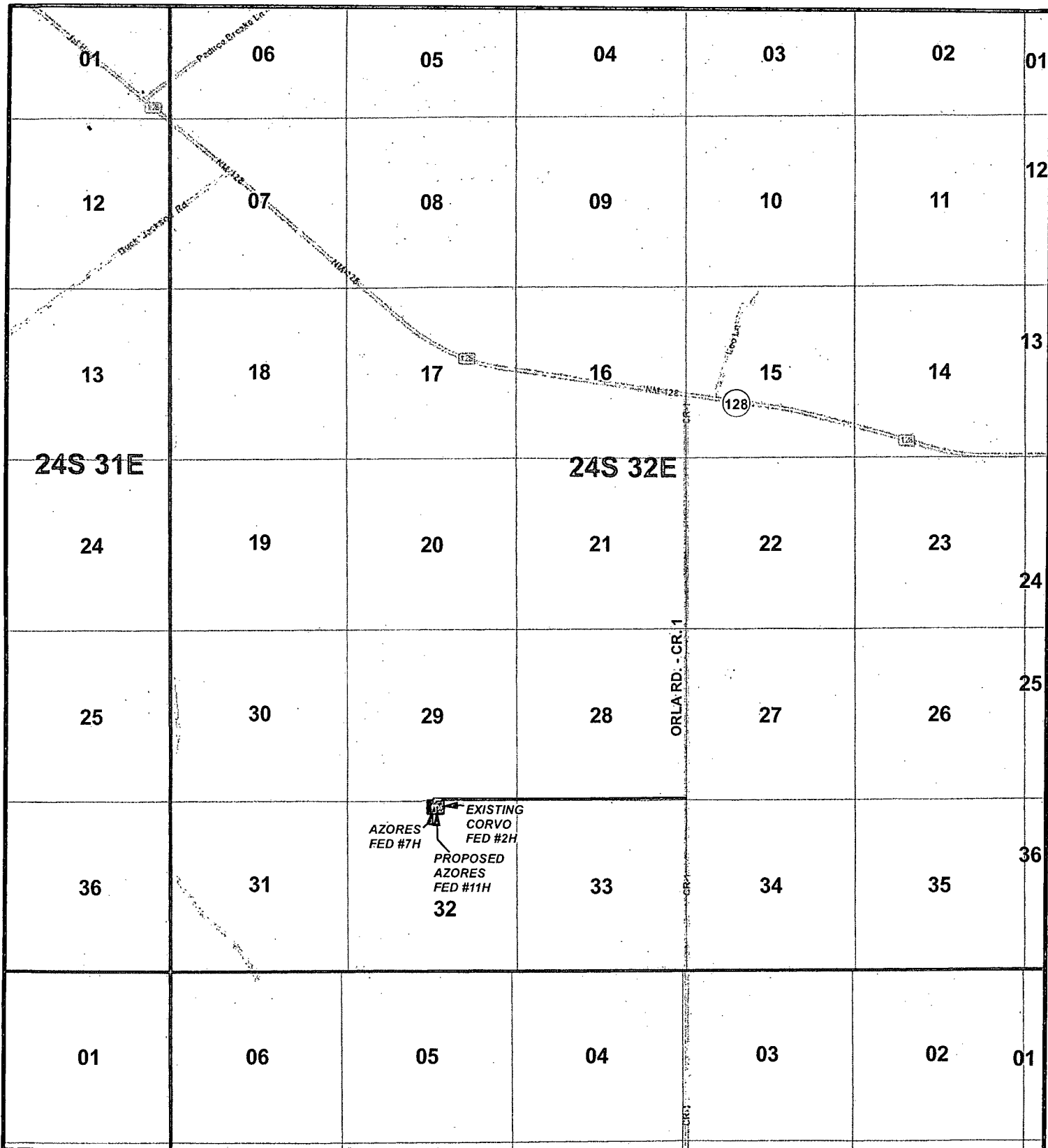
A.F.



COG PRODUCTION, LLC



HARCROW SURVEYING, LLC.
2314 W. MAIN ST, ARTESIA, NM 88210
PH: (575) 746-2158 FAX: (575) 746-2158
c.harcrow@harcrowsurveying.com



LEGEND

WELL

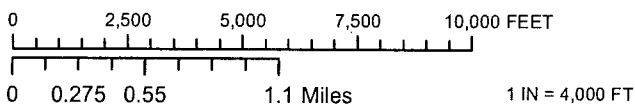
WELLPAD

EXISTING ROAD

PROPOSED ROAD

AZORES FEDERAL #7H

SEC: 32 TWP:24 S. RGE:32 E. ELEVATION:3491.3'
 STATE: NEW MEXICO COUNTY: LEA 210' FNL & 2550' FEL
 W.O. # 15-1373 LEASE: AZORES FED SURVEY: N.M.P.M



VICINITY MAP

02/02/2016

A.F

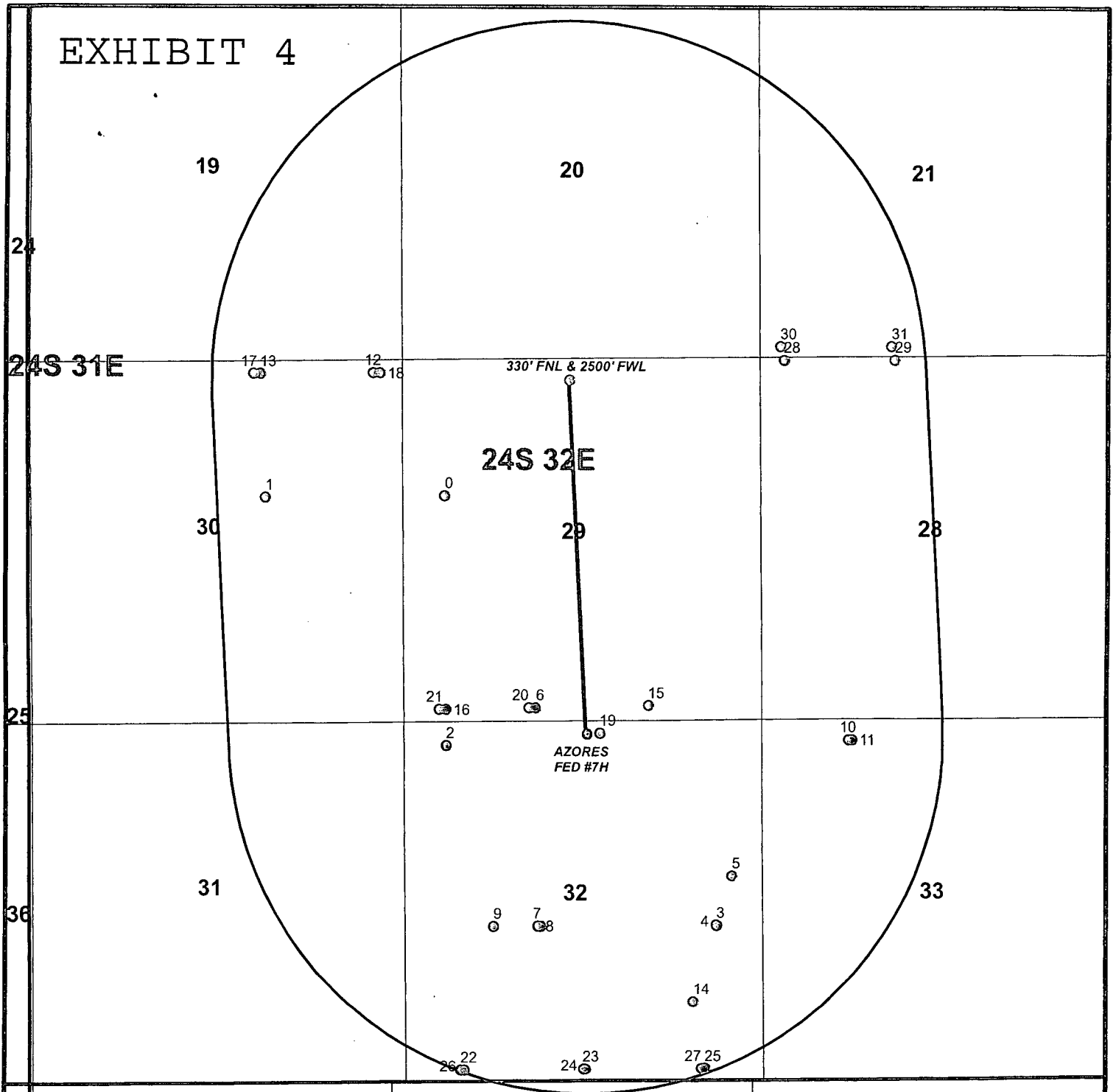
CONCHO

COG PRODUCTION, LLC



HARCROW SURVEYING, LLC.
 2314 W. MAIN ST, ARTESIA, NM 88210
 PH: (575) 746-2158 FAX: (575) 746-2158
 c.harcrow@harcrowsurveying.com

EXHIBIT 4



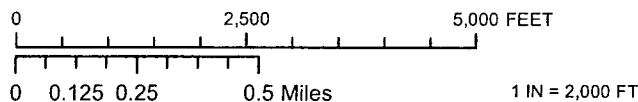
DATA FOR "WELLS WITHIN 1 MI." IS TAKEN FROM THE NEW MEXICO EMNRD WEBSITE. THE DATA HAS BEEN UPDATED THROUGH JANUARY 24, 2016.

LEGEND

- WELL
- BOTTOMHOLE
- WELLS WITHIN 1 MI.
- 1 MI. BUFFER

AZORES FEDERAL #7H

SEC: 32	TWP: 24 S.	RGE: 32 E.	ELEVATION: 3491.3'
STATE: NEW MEXICO	COUNTY: LEA	210' FNL & 2550' FEL	
W.O. # 15-1373	LEASE: AZORES FED	SURVEY: N.M.P.M	



VICINITY MAP

02/02/2016

A:F



COG PRODUCTION, LLC

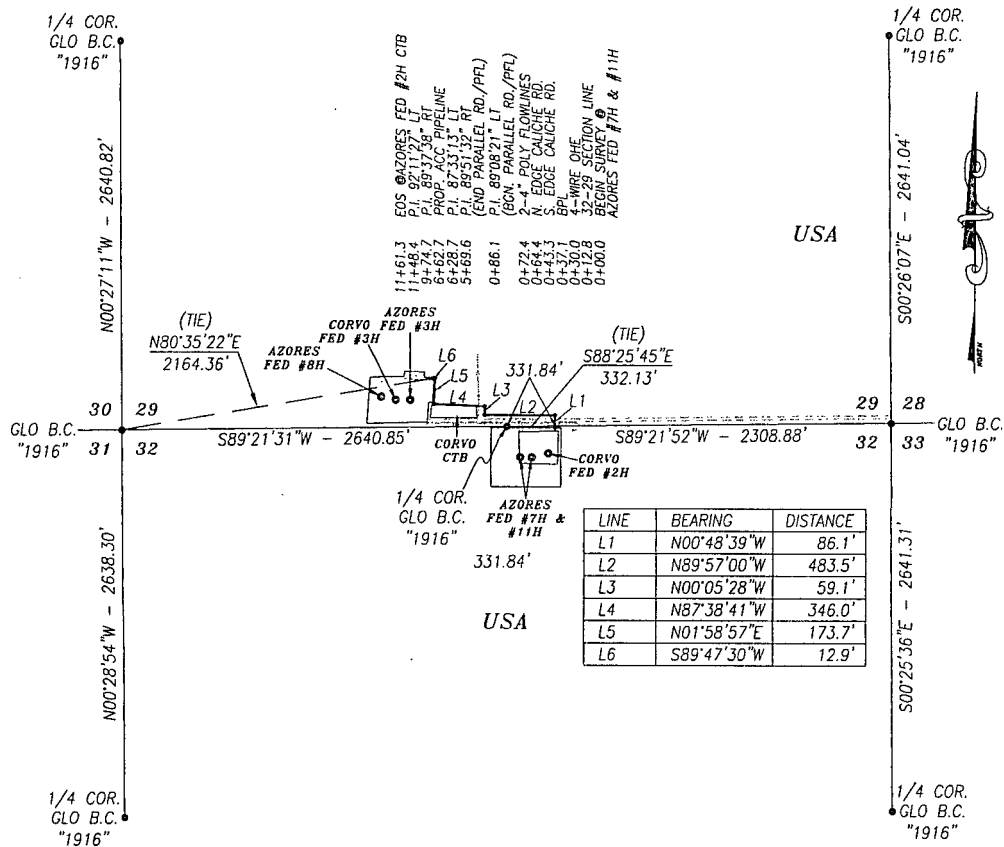


HARCROW SURVEYING, LLC.
2314 W. MAIN ST, ARTESIA, NM 88210
PH: (575) 746-2158 FAX: (575) 746-2158
c.harcrow@harcrowsurveying.com

FID Shape *		OPERATOR		WELL_NAME		AZORES FEDERAL #7H							SECTION		TOWNSHIP		RANGE		FTG_NS		NS_CD		FTG_EW		EW_CD		TVD_DEPTH		COMPL_STAT	
0	Point	STANOLIND OIL & GAS CO	PAYNE 001	32.190181	-103.703114	3002512715	29	24.05	32E	1980 N	660 W	4811	Plugged																	
1	Point	FORTE ENERGY CORP	PADUCA FEDERAL 001	32.190153	-103.711689	3002526234	30	24.05	32E	1980 N	1980 E	15531	Plugged																	
2	Point	YATES PETROLEUM CORPORATION	CALCUTTA BRZ STATE 001H	32.180179	-103.703088	3002540453	32	24.05	32E	330 N	660 W	60	Plugged																	
3	Point	DEVON ENERGY PRODUCTION COMPANY, LP	COTTON DRAW 32 STATE 001H	32.172904	-103.690196	3002540495	32	24.05	32E	2301 S	661 E	0	New (Not drilled or compl)																	
4	Point	DEVON ENERGY PRODUCTION COMPANY, LP	COTTON DRAW 32 STATE FEDERAL COM 001H	32.172929	-103.690193	3002540583	32	24.05	32E	2310 S	660 E	15522	New (Not drilled or compl)																	
5	Point	YATES PETROLEUM CORPORATION	BOMBAY B5B FEDERAL COM 001H	32.174903	-103.689444	3002540718	32	24.05	32E	2310 N	430 E	12837	New (Not drilled or compl)																	
6	Point	COG PRODUCTION, LLC	AZORES FEDERAL 003H	32.181662	-103.698801	3002541158	29	24.05	32E	190 S	1980 W	10577	New (Not drilled or compl)																	
7	Point	DEVON ENERGY PRODUCTION COMPANY, LP	COTTON DRAW 32 STATE FEDERAL COM 002H	32.172901	-103.698585	3002541170	32	24.05	32E	2310 S	2030 W	0	New (Not drilled or compl)																	
8	Point	DEVON ENERGY PRODUCTION COMPANY, LP	COTTON DRAW 32 STATE FEDERAL COM 003H	32.172901	-103.698748	3002541171	32	24.05	32E	2310 S	1980 W	8302	New (Not drilled or compl)																	
9	Point	DEVON ENERGY PRODUCTION COMPANY, LP	COTTON DRAW 32 STATE FEDERAL COM 004H	32.172894	-103.700859	3002541172	32	24.05	32E	2310 S	1330 W	8289	New (Not drilled or compl)																	
10	Point	DEVON ENERGY PRODUCTION COMPANY, LP	COTTON DRAW 33 4 FEDERAL COM 001H	32.180374	-103.683837	3002541263	33	24.05	32E	330 N	1295 W	8432	New (Not drilled or compl)																	
11	Point	DEVON ENERGY PRODUCTION COMPANY, LP	COTTON DRAW 33 4 FEDERAL COM 002H	32.180375	-103.683674	3002541264	33	24.05	32E	330 N	1345 W	8429	New (Not drilled or compl)																	
12	Point	COG PRODUCTION, LLC	WINDWARD FEDERAL 004H	32.195111	-103.706489	3002541412	30	24.05	32E	190 N	430 E	10516	New (Not drilled or compl)																	
13	Point	COG PRODUCTION, LLC	WINDWARD FEDERAL 003H	32.195094	-103.711914	3002541413	30	24.05	32E	190 N	2100 E	10579	New (Not drilled or compl)																	
14	Point	DEVON ENERGY PRODUCTION COMPANY, LP	COTTON DRAW 32 STATE SWD 002	32.169819	-103.6913	3002541524	32	24.05	32E	1180 S	1000 E	0	New (Not drilled or compl)																	
15	Point	COG PRODUCTION, LLC	AZORES FEDERAL 002H	32.181728	-103.693402	3002541534	29	24.05	32E	190 S	1650 E	10611	New (Not drilled or compl)																	
16	Point	COG PRODUCTION, LLC	AZORES FEDERAL 004H	32.181609	-103.703089	3002541535	29	24.05	32E	190 S	660 W	10552	New (Not drilled or compl)																	
17	Point	COG PRODUCTION, LLC	KING TUT FEDERAL 003H	32.195093	-103.712239	3002541559	30	24.05	32E	190 N	2200 E	0	New (Not drilled or compl)																	
18	Point	COG PRODUCTION, LLC	KING TUT FEDERAL 004H	32.195111	-103.706164	3002541560	30	24.05	32E	190 N	330 E	8475	New (Not drilled or compl)																	
19	Point	COG PRODUCTION, LLC	CORVO FEDERAL 002H	32.180654	-103.695739	3002541910	32	24.05	32E	190 N	2370 E	8464	New (Not drilled or compl)																	
20	Point	COG PRODUCTION, LLC	CORVO FEDERAL 003H	32.181658	-103.699125	3002541911	29	24.05	32E	190 S	1880 W	8446	New (Not drilled or compl)																	
21	Point	COG PRODUCTION, LLC	CORVO FEDERAL 004H	32.181605	-103.703414	3002541912	29	24.05	32E	190 S	560 W	8439	New (Not drilled or compl)																	
22	Point	DEVON ENERGY PRODUCTION COMPANY, LP	CHINCOTEAGUE 32 STATE COM 001H	32.167089	-103.702439	3002542215	32	24.05	32E	200 S	830 W	0	New (Not drilled or compl)																	
23	Point	DEVON ENERGY PRODUCTION COMPANY, LP	CHINCOTEAGUE 32 STATE COM 003H	32.167108	-103.696594	3002542216	32	24.05	32E	200 S	2630 W	0	New (Not drilled or compl)																	
24	Point	DEVON ENERGY PRODUCTION COMPANY, LP	CHINCOTEAGUE 32 STATE COM 004H	32.167108	-103.696499	3002542217	32	24.05	32E	200 S	2600 E	0	New (Not drilled or compl)																	
25	Point	DEVON ENERGY PRODUCTION COMPANY, LP	CHINCOTEAGUE 32 STATE COM 006H	32.167127	-103.690751	3002542219	32	24.05	32E	200 S	830 E	0	New (Not drilled or compl)																	
26	Point	DEVON ENERGY PRODUCTION COMPANY, LP	CHINCOTEAGUE 32 STATE COM 002H	32.167089	-103.702277	3002542263	32	24.05	32E	200 S	880 W	0	New (Not drilled or compl)																	
27	Point	DEVON ENERGY PRODUCTION COMPANY, LP	CHINCOTEAGUE 32 STATE COM 005H	32.167126	-103.690913	3002542264	32	24.05	32E	200 S	880 E	0	New (Not drilled or compl)																	
28	Point	XTO ENERGY, INC	CAZADOR FEDERAL 001H	32.195567	-103.686863	3002542869	28	24.05	32E	100 N	370 W	0	New (Not drilled or compl)																	
29	Point	XTO ENERGY, INC	CAZADOR FEDERAL 002H	32.195548	-103.681552	3002542870	28	24.05	32E	100 N	2005 W	0	New (Not drilled or compl)																	
30	Point	XTO ENERGY, INC	OUTRIDER FEDERAL 001H	32.196117	-103.687028	3002542883	21	24.05	32E	100 S	320 W	0	New (Not drilled or compl)																	
31	Point	XTO ENERGY, INC	OUTRIDER FEDERAL 002H	32.196098	-103.681716	3002542884	21	24.05	32E	100 S	1955 W	0	New (Not drilled or compl)																	

FLOWLINE PLAT COG OPERATING, LLC.

• A 2-7/8" OIL, GAS, WATER FLOWLINE FROM THE AZORES FED #7H & #11H TO
THE AZORES FED #3H CTB IN
SECTIONS 29 & 32, TOWNSHIP 24 SOUTH, RANGE 32 EAST, N.M.P.M.,
LEA COUNTY, NEW MEXICO.



DESCRIPTION

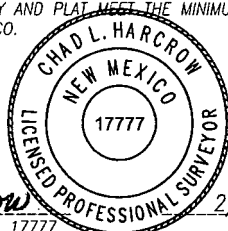
A STRIP OF LAND 30.0 FEET WIDE AND 1161.3 FEET OR 70.38 RODS OR 0.220 MILES IN LENGTH CROSSING USA LAND IN SECTIONS 29 & 32, TOWNSHIP 24 SOUTH, RANGE 32 EAST, LEA COUNTY, NEW MEXICO AND BEING 15.0 FEET LEFT AND 15.0 FEET RIGHT OF THE ABOVE PLATTED CENTERLINE SURVEY.

BASIS OF BEARING:

BEARINGS SHOWN HEREON ARE MERCATOR GRID AND CONFORM TO THE NEW MEXICO COORDINATE SYSTEM "NEW MEXICO EAST ZONE" NORTH AMERICAN DATUM 1983. DISTANCES ARE GRID VALUES.

CERTIFICATION

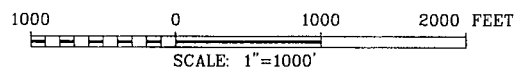
I, CHAD HARCROW, A NEW MEXICO REGISTERED PROFESSIONAL SURVEYOR CERTIFY THAT I DIRECTED AND AM RESPONSIBLE FOR THIS SURVEY, THAT THIS SURVEY IS TRUE AND CORRECT TO THE BEST OF MY KNOWLEDGE AND BELIEF, AND THIS SURVEY AND PLAT MEET THE MINIMUM STANDARDS FOR SURVEYING IN NEW MEXICO.



Chad Harcrow
CHAD HARCROW N.M.P.S. NO. 17777

2/1/16
DATE

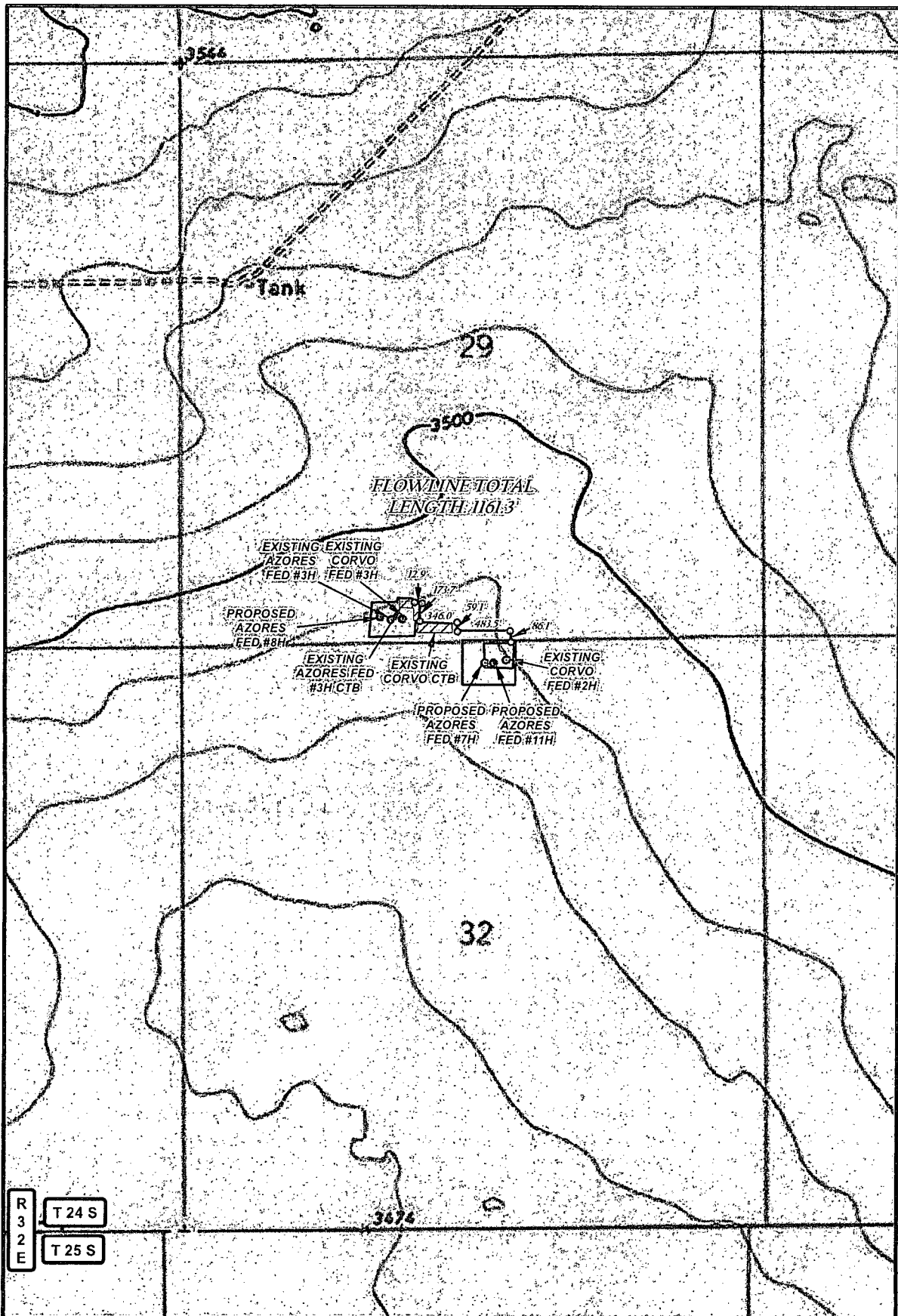
HARCROW SURVEYING, LLC
2314 W. MAIN ST, ARTESIA, N.M. 88210
PH: (575) 746-2158 FAX: (575) 746-2158
c.harcrow@harcrowsurveying.com



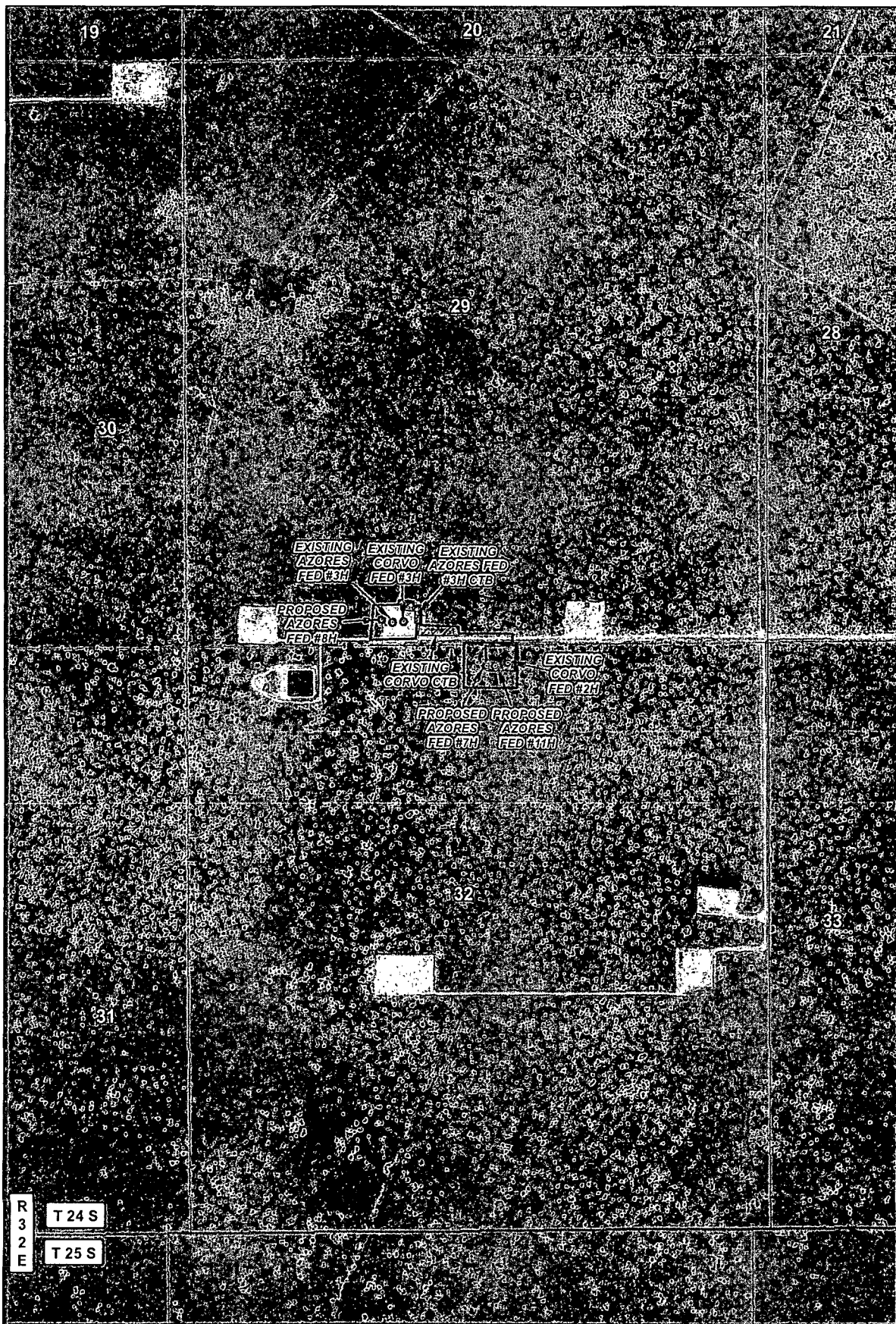
COG OPERATING, LLC

SURVEY OF A PROPOSED FLOWLINE LOCATED IN
SECTIONS 29 & 32, TOWNSHIP 24 SOUTH, RANGE 32
EAST, LEA COUNTY, NMPM, NEW MEXICO

SURVEY DATE: JANUARY 26, 2016	
DRAFTING DATE: JANUARY 29, 2016	PAGE 1 OF 1
APPROVED BY: CH	DRAWN BY: SP
	FILE: 16-55



LEGEND		AZORES FED #7H & #11H FLOWLINE		 CONCHO COG OPERATING, LLC
WELL	SECTIONS: 29 & 32 TOWNSHIP: 24 S. RANGE: 32 E.			
WELLPAD	STATE: NEW MEXICO COUNTY: LEA SURVEY: N.M.P.M			
FLOWLINE	W.O. # 16-55 LEASE: AZORES FED			
<div style="display: flex; align-items: center;"> 0 0.05 0.1 0.2 Miles </div>			<div style="display: flex; align-items: center;"> 2,500 FEET </div>	
FLOWLINE OVERVIEW TOPO 01/29/2015 S.P.			 HARCROW SURVEYING, LLC. 2314 W. MAIN ST, ARTESIA, NM 88210 PH: (575) 746-2158 FAX: (575) 746-2158 c.harcrow@harcrowsurveying.com	



R
3
2
E

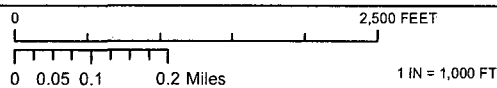
T 24 S
T 25 S

LEGEND

- WELL
- WELLPAD
- FLOWLINE

AZORES FED #7H & #11H FLOWLINE

SECTIONS: 29 & 32 TOWNSHIP: 24 S. RANGE: 32 E.
STATE: NEW MEXICO COUNTY: LEA SURVEY: N.M.P.M
W.O. # 16-55 LEASE: AZORES FED



FLOWLINE OVERVIEW IMAGERY 01/29/2015 S.P.

CONCHO
COG OPERATING, LLC

HARCROW SURVEYING, LLC.
2314 W. MAIN ST, ARTESIA, NM 88210
PH: (575) 746-2158 FAX: (575) 746-2158
c.harcrow@harcrowsurveying.com



R
3
2
E

T 24 S

T 25 S

LEGEND

○ WELL

□ WELLPAD

— FLOWLINE

AZORES FED #7H & #11H FLOWLINE

SECTIONS: 29 & 32 TOWNSHIP: 24 S. RANGE: 32 E.

STATE: NEW MEXICO COUNTY: LEA SURVEY: N.M.P.M

W.O. # 16-55

LEASE: AZORES FED

0 2,500 FEET

0 0.05 0.1 0.2 Miles 1 IN = 1,000 FT

FLOWLINE OVERVIEW

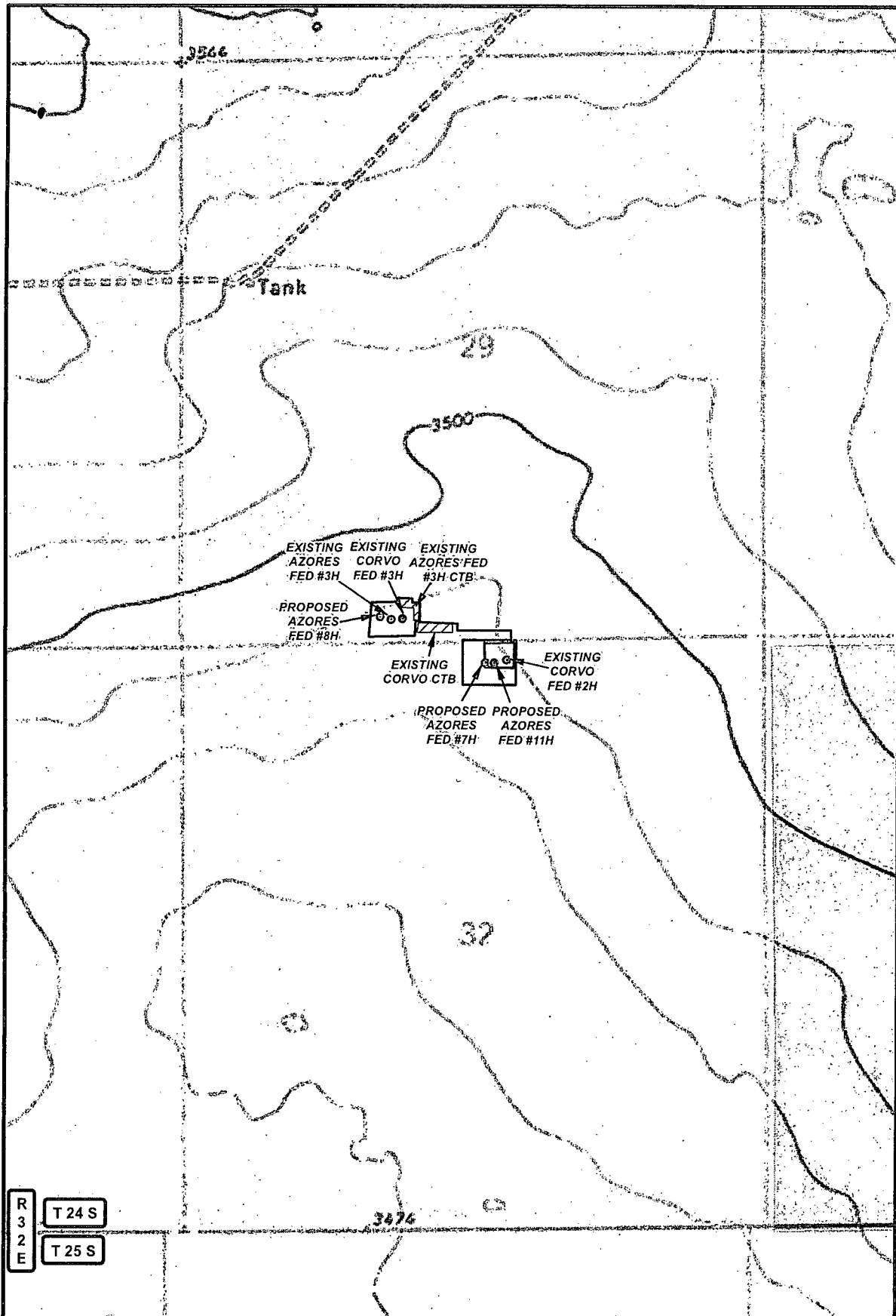
IMAGERY

01/29/2015

S.P.

CONCHO
COG OPERATING, LLC

HARCROW SURVEYING, LLC.
2314 W. MAIN ST, ARTESIA, NM 88210
PH: (575) 746-2158 FAX: (575) 746-2158
c.harcrow@harcrowsurveying.com



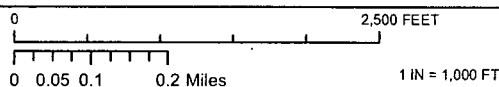
R 32 E
T 24 S
T 25 S

LEGEND

- WELL
- WELLPAD
- FLOWLINE
- PRIVATE
- STATE OF NM
- US BLM

AZORES FED #7H & #11H FLOWLINE

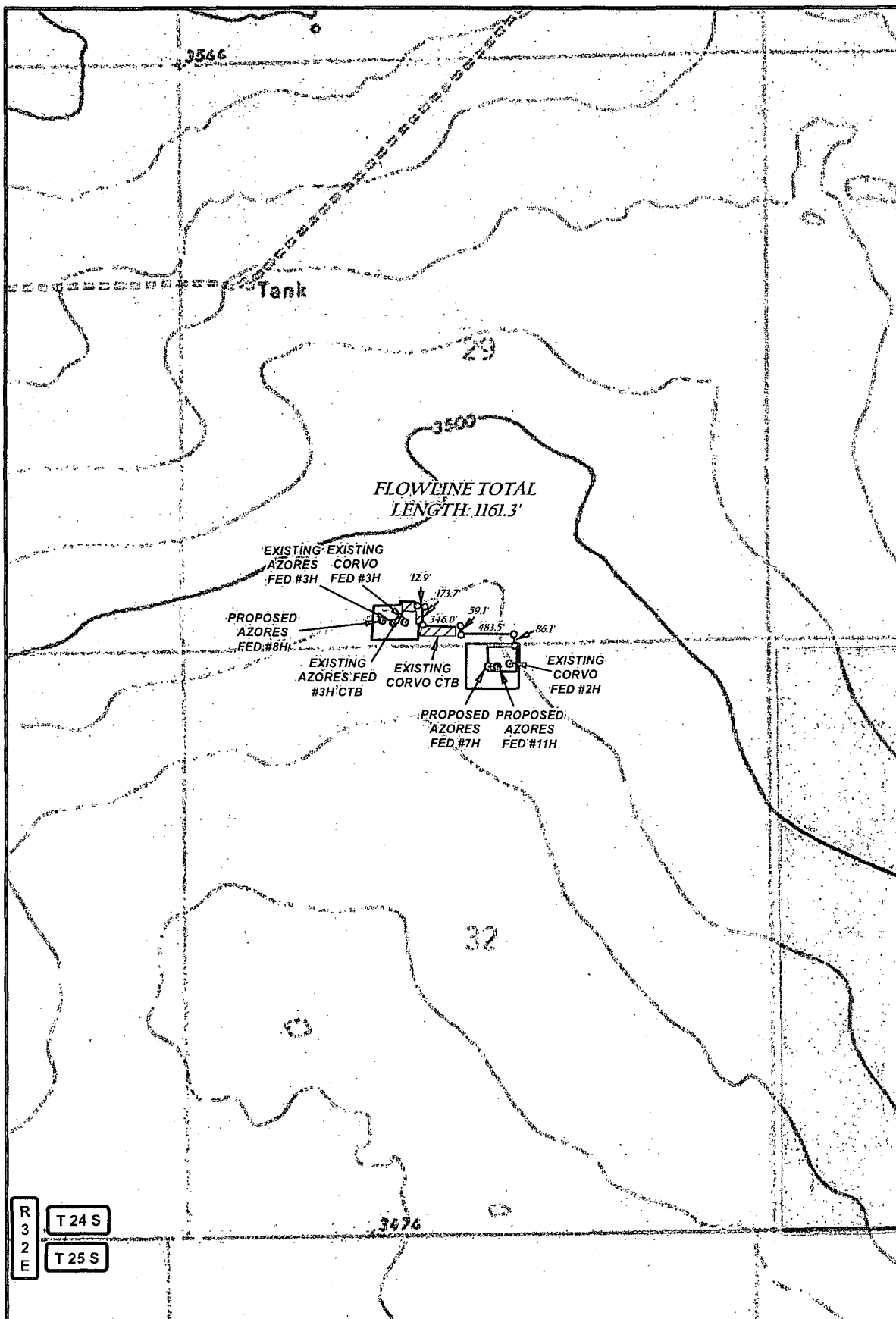
SECTIONS: 29 & 32 TOWNSHIP: 24 S. RANGE: 32 E.
STATE: NEW MEXICO COUNTY: LEA SURVEY: N.M.P.M.
W.O. # 16-55 LEASE: AZORES FED



FLOWLINE OVERVIEW LAND STATUS 01/29/2015 S.P.

CONCHO
COG OPERATING, LLC

HARCROW SURVEYING, LLC.
2314 W. MAIN ST. ARTESIA, NM 88210
PH: (575) 746-2158 FAX: (575) 746-2158
c.harcrow@harcrowsurveying.com



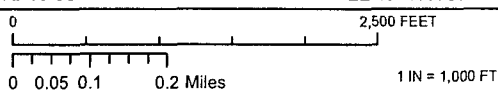
R 32 E
T 24 S
T 25 S

LEGEND

- WELL
- WELLPAD
- FLOWLINE
- PRIVATE
- STATE OF NM
- US BLM

AZORES FED #7H & #11H FLOWLINE

SECTIONS: 29 & 32 TOWNSHIP: 24 S. RANGE: 32 E.
STATE: NEW MEXICO COUNTY: LEA SURVEY: N.M.P.M.
W.O. # 16-55 LEASE: AZORES FED



FLOWLINE OVERVIEW LAND STATUS 01/29/2015 SP.

CONCHO
COG OPERATING, LLC

HARCROW SURVEYING, LLC.
2314 W. MAIN ST. ARTESIA, NM 88210
PH: (575) 746-2158 FAX: (575) 746-2158
c.harcrow@harcrowsurveying.com