

DISTRICT I1635 N. French Dr., Hobbs, NM 88240
Phone (505) 383-6101 Fax: (505) 383-0720**DISTRICT II**811 S. First St., Artesia, NM 88210
Phone (505) 748-1223 Fax: (505) 748-0720**DISTRICT III**1000 Rio Brazos Rd., Aztec, NM 87410
Phone (505) 334-8178 Fax: (505) 334-8170**DISTRICT IV**1820 S. St. Francis Dr., Santa Fe, NM 87505
Phone (505) 476-8468 Fax: (505) 476-8468**State of New Mexico**
Energy, Minerals and Natural Resources Department**OIL CONSERVATION DIVISION**1220 South St. Francis Dr.
Santa Fe, New Mexico 87505

Form C-102

Revised August 1, 2011

Submit one copy to appropriate
District Office**WELL LOCATION AND ACREAGE DEDICATION PLAT**☐ AMENDED REPORT

API Number 30-025- 43180	Pool Code 97929	Pool Name WC-025 G-06 S213326D; Bone Spring
Property Code 316099	Property Name RASPBERRY STATE COM	Well Number 3H
OGRID No. 229137	Operator Name COG OPERATING, LLC	Elevation 3698'

Surface Location

UL or lot No.	Section	Township	Range	Lot Idn	Feet from the	North/South line	Feet from the	East/West line	County
N	27	21 S	33 E		300	SOUTH	1980	WEST	LEA

Bottom Hole Location If Different From Surface

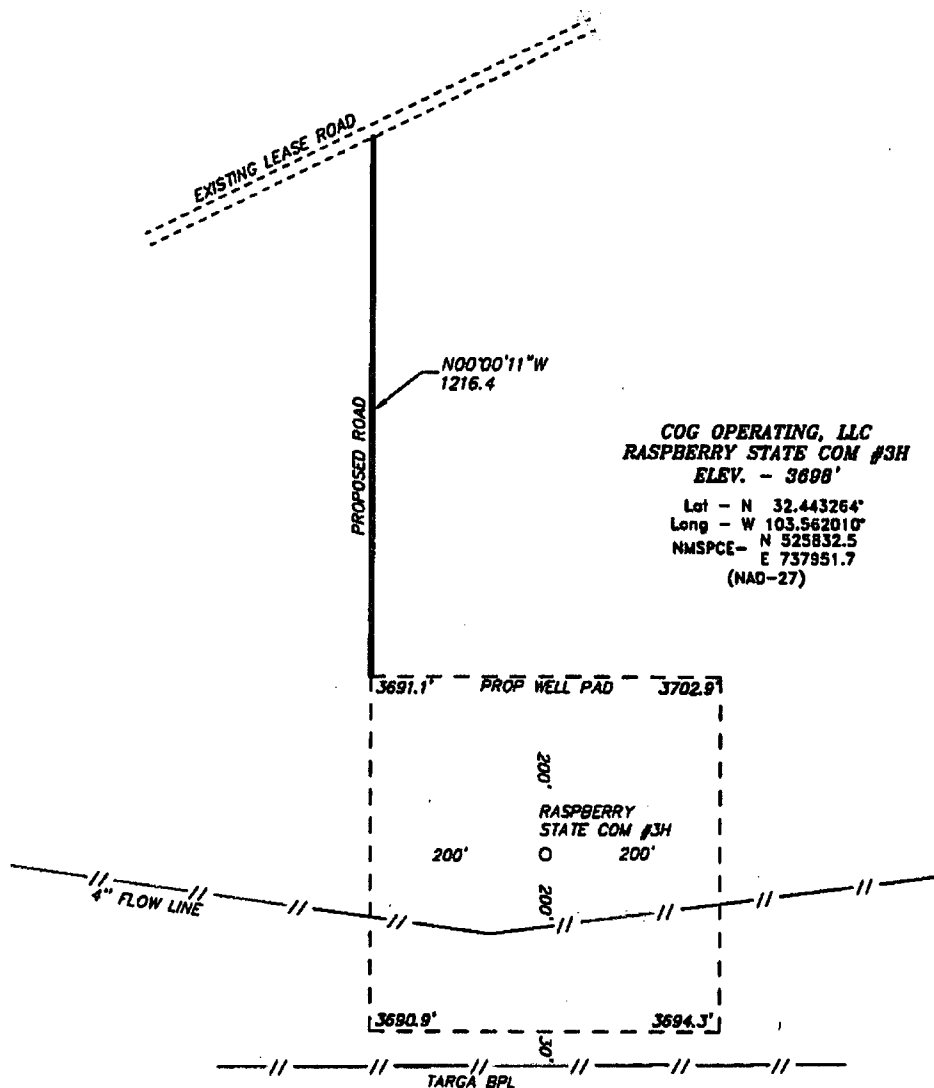
UL or lot No.	Section	Township	Range	Lot Idn	Feet from the	North/South line	Feet from the	East/West line	County
C	22	21 S	33 E		50	NORTH	1980	WEST	LEA
Dedicated Acres 320	Joint or Infill	Consolidation Code	Order No.						

NO ALLOWABLE WILL BE ASSIGNED TO THIS COMPLETION UNTIL ALL INTERESTS HAVE BEEN CONSOLIDATED
OR A NON-STANDARD UNIT HAS BEEN APPROVED BY THE DIVISION

<p>N: 536081.4 E: 735880.7 (NAD-27)</p> <p>PROPOSED BOTTOM HOLE LOCATION Lat - N 32.471324° Long - W 103.562066° NMSPCE- N 536040.5 E 737860.6 (NAD-27)</p> <p>N: 533441.5 E: 735902.7 (NAD-27)</p> <p>N: 530800.3 E: 735925.7 (NAD-27)</p> <p>N: 528162.1 E: 735948.3 (NAD-27)</p> <p>SURFACE LOCATION Lat - N 32.443264° Long - W 103.562010° NMSPCE- N 525832.5 E 737951.7 (NAD-27)</p> <p>N: 525521.4 E: 735975.1 (NAD-27)</p>		<p>N: 536093.8 E: 738535.1 (NAD-27)</p> <p>N: 536108.8 E: 741189.9 (NAD-27)</p> <p>N: 533468.1 E: 741209.7 (NAD-27)</p> <p>N: 530829.4 E: 741228.7 (NAD-27)</p> <p>N: 528194.8 E: 741245.3 (NAD-27)</p> <p>N: 525536.3 E: 738820.7 (NAD-27)</p> <p>N: 525552.4 E: 741266.6 (NAD-27)</p>	<p>OPERATOR CERTIFICATION I hereby certify that the information contained herein is true and complete to the best of my knowledge and belief, and that this organization either owns a working interest or unleased mineral interest in the land including the proposed bottom hole location or has a right to drill this well at this location pursuant to a contract with an owner of such a mineral or working interest, or to a voluntary pooling agreement or a compulsory pooling order heretofore entered by the Division.</p> <p><i>Melanie J Wilson</i> 4/11/16 Signature Date</p> <p>Melanie J Wilson Printed Name mwilson@concho.com Email Address</p> <p>SURVEYOR CERTIFICATION I hereby certify that the well location shown on this plat was plotted from field notes of actual surveys made by me or under my supervision and that the same is true and correct to the best of my belief.</p> <p>DATE SURVEYED: 12/10/2016 SIGNATURE: [Signature] NEW MEXICO Professional Surveyor 7977</p> <p>CERTIFICATE NO. 7977 DATE: 12/10/2016</p> <p>0' 1000' 2000' 3000' 4000' SCALE: 1" = 2000' WO Num.: 32226</p>
--	--	---	--

APR 25 2016

Section 27, Township 21 South, Range 33 East, N.M.P.M.,
LEA COUNTY, NEW MEXICO.



Directions to Location:

LOCATION LIES 23 MILES DUE WEST OF EUNICE, NM.
BETWEEN MM14 & MM15, GO SOUTHWEST, SOUTH, &
SOUTHEAST ON LEASE ROAD 3.6 MILES. THEN RIGHT
GOING WESTERLY 4.2 MILES TO PROPOSED ROAD TO
LOCATION.

EUNICE, NM IS ±23 MILES TO THE EAST OF LOCATION.



COG OPERATING, LLC

REF: RASPBERRY STATE COM #3H / WELL PAD TOPO

THE RASPBERRY STATE COM #3H LOCATED 300' FROM
THE SOUTH LINE AND 1980' FROM THE WEST LINE OF
SECTION 27, TOWNSHIP 21 SOUTH, RANGE 33 EAST.

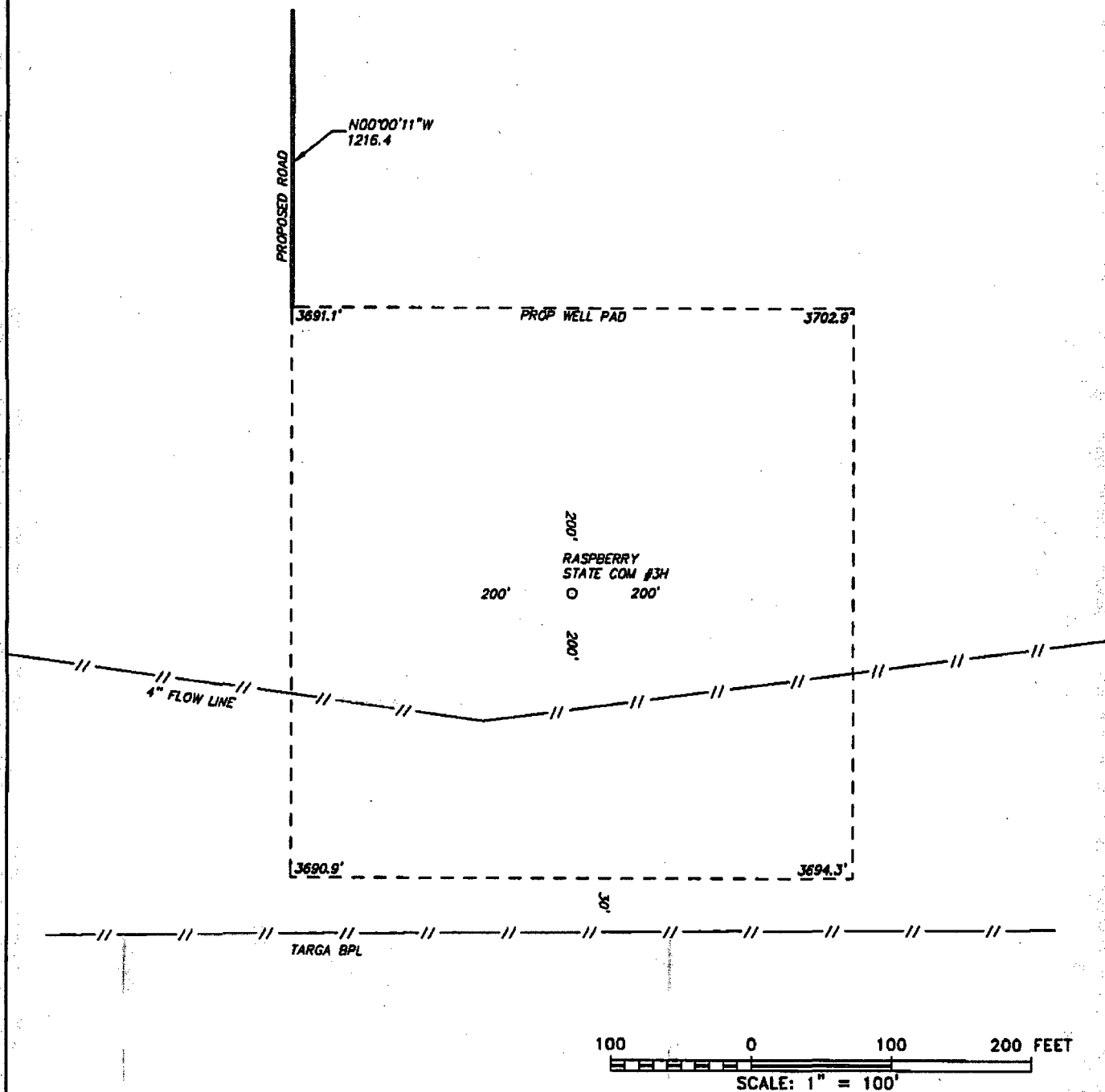
N.M.P.M., LEA COUNTY, NEW MEXICO.



P.O. Box 1786 (575) 393-7316 - Office
1120 N. West County Rd. (575) 392-2206 - Fax
focused on excellence in the oilfield Hobbs, New Mexico 88241 basin-surveys.com

W.O. Number: 32226 Drawn By: J GOAD Date: 3-21-2016 Survey Date: 3-17-2016 Sheet 1 of 1 Sheets

Section 27, Township 21 South, Range 33 East, N.M.P.M.,
LEA COUNTY, NEW MEXICO.



COG OPERATING, LLC

REF: RASPBERRY STATE COM #3H / WELL PAD TOPO

THE RASPBERRY STATE COM #3H LOCATED 300' FROM
THE SOUTH LINE AND 1980' FROM THE WEST LINE OF
SECTION 27, TOWNSHIP 21 SOUTH, RANGE 33 EAST.

N.M.P.M., LEA COUNTY, NEW MEXICO.

basin
surveys
focused on excellence
in the oilfield

P.O. Box 1786
1120 N. West County Rd.
Hobbs, New Mexico 88241
(575) 393-7316 - Office
(575) 392-2206 - Fax
basinsurveys.com

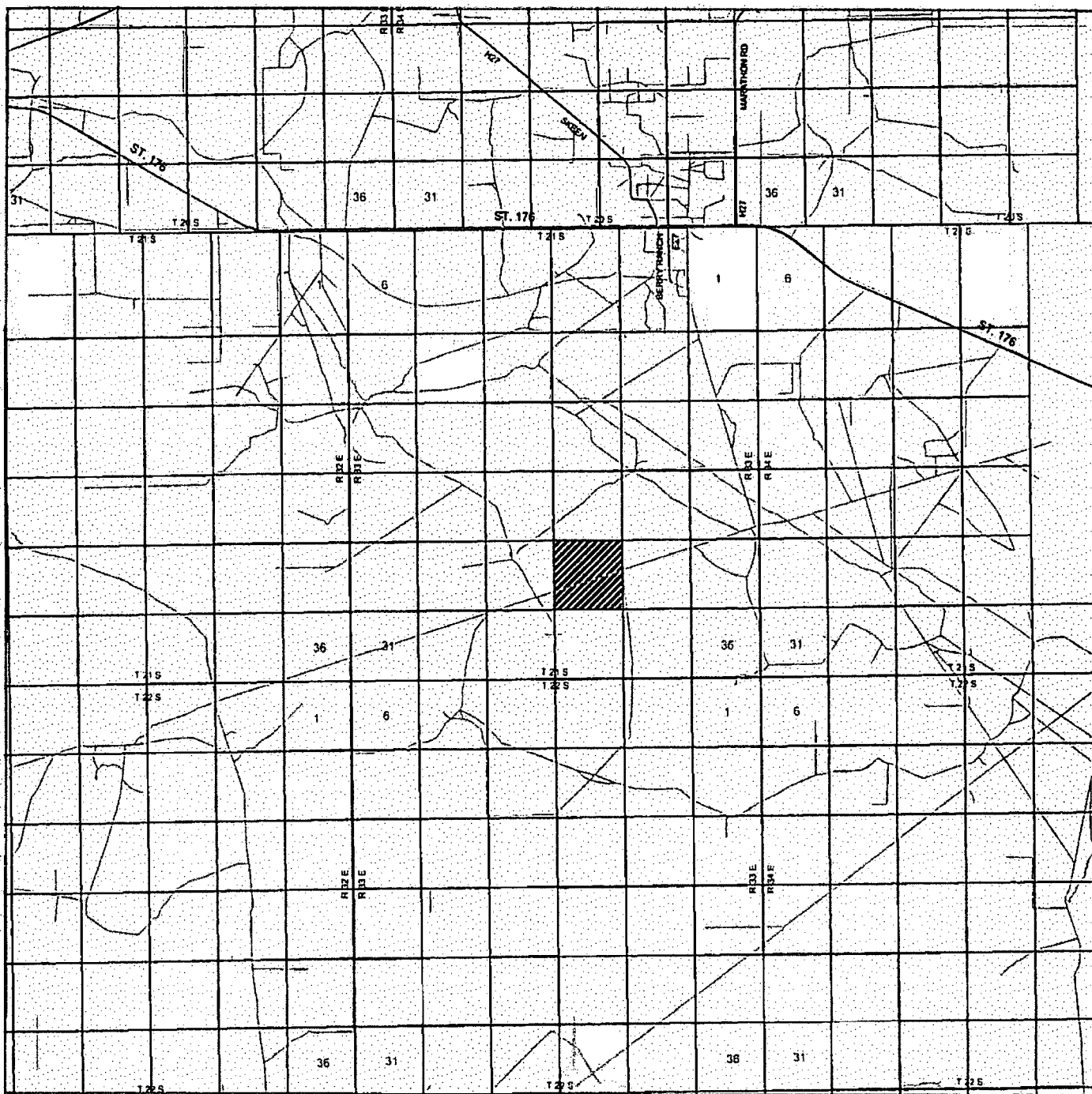
W.O. Number: 32226

Drawn By: J GOAD

Date: 3-21-2016

Survey Date: 3-17-2016

Sheet 1 of 1 Sheets



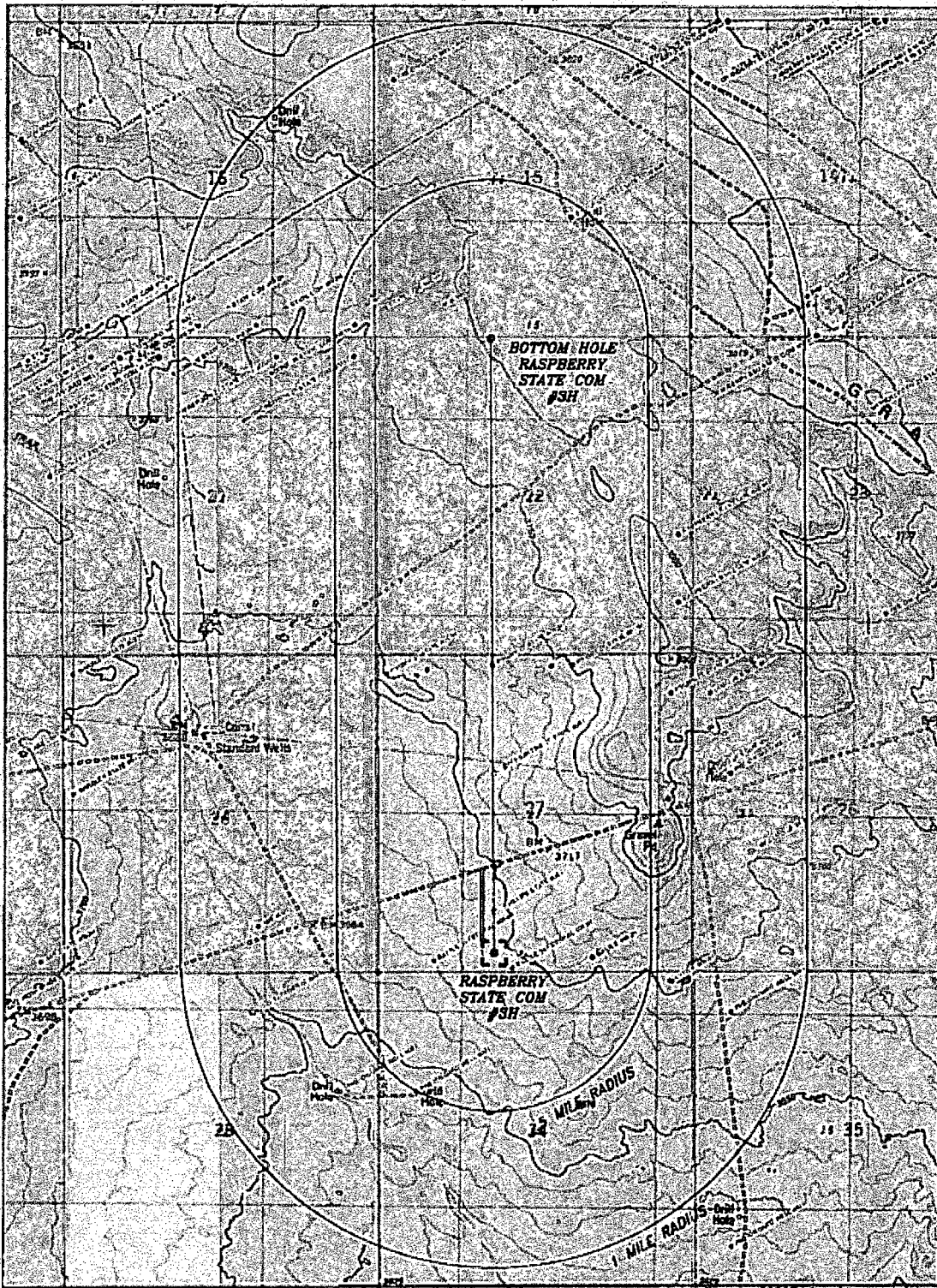
RASPBERRY STATE COM #3H
 Located 300' FSL and 1980' FWL
 Section 27, Township 21 South, Range 33 East,
 N.M.P.M., Lea County, New Mexico.

basin
surveys
 focused on excellence
 in the oilfield

P.O. Box 1786
 1120 N. West County Rd.
 Hobbs, New Mexico 88241
 (575) 393-7316 - Office
 (575) 392-2206 - Fax
 basin-surveys.com

D 1 MI 2 MI 3 MI 4 MI
 SCALE: 1" = 2 MILES
 W.O. Number: JG 32226
 Survey Date: 3-17-2016
 YELLOW TINT - USA LAND
 BLUE TINT - STATE LAND
 NATURAL COLOR - FEE LAND

COG
OPERATING,
LLC



RASPBERRY STATE COM #3H AND BOTTOM HOLE LOCATION

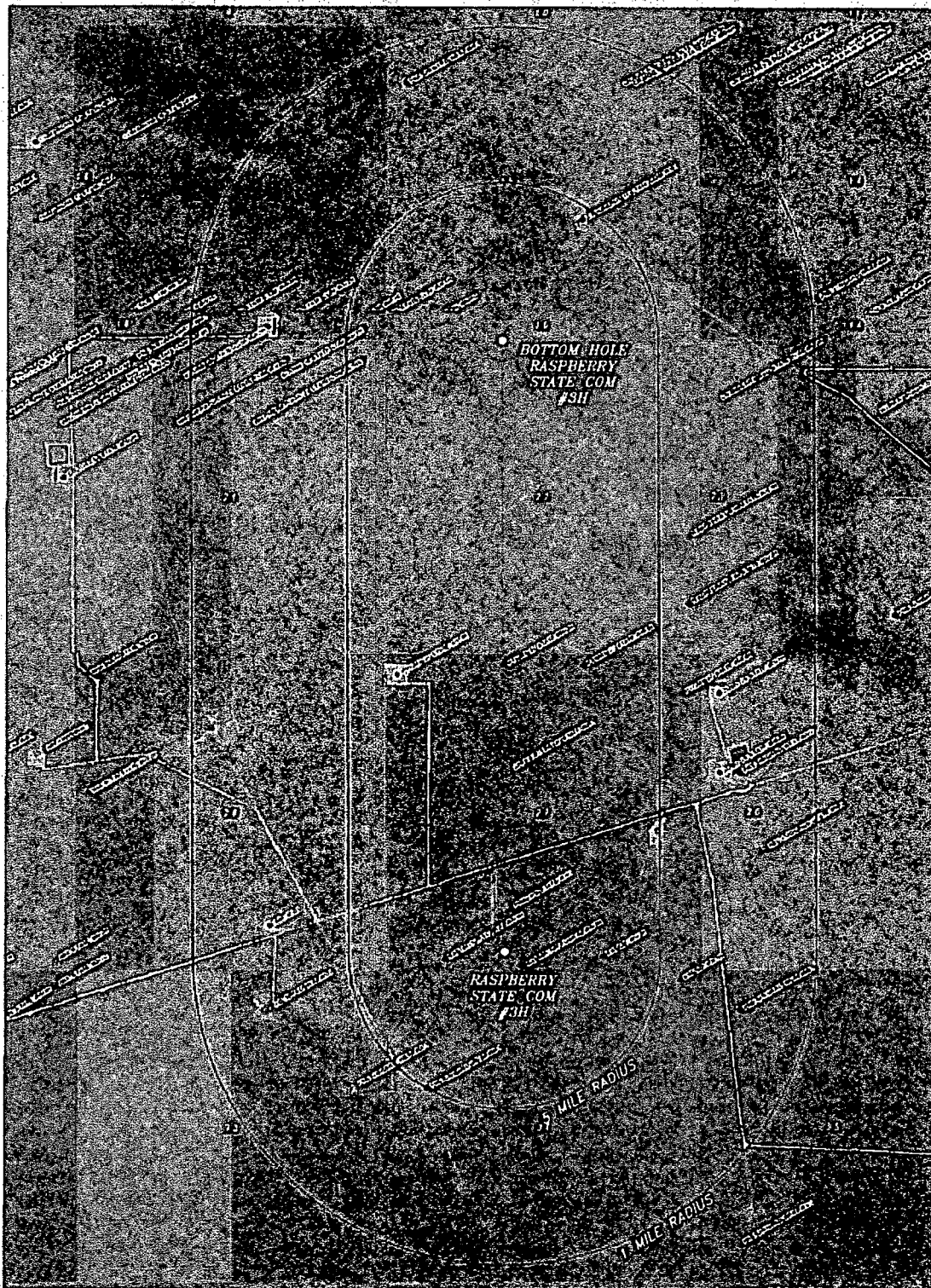
Located 300' FSL and 1980' FWL
 Section 27, Township 21 South, Range 33 East,
 N.M.P.M., Lea County, New Mexico.



P.O. Box 1786
 1120 N. West County Rd.
 Hobbs, New Mexico 88241
 (575) 393-7316 - Office
 (575) 392-2206 - Fax
 basin-surveys.com

0' 1000' 2000' 3000' 4000'
 SCALE: 1" = 2000'
 W.O. Number: JG 32226
 Survey Date: 3-17-2016
 YELLOW TINT - USA LAND
 BLUE TINT - STATE LAND
 NATURAL COLOR - FEE LAND

**COG
 OPERATING,
 LLC**



RASPBERRY STATE COM #3H AND BOTTOM HOLE LOCATION
 Located 300' FSL and 1980' FWL
 Section 27, Township 21 South, Range 33 East,
 N.M.P.M., Lea County, New Mexico.

basin
surveys
 focused on excellence
 in the oilfield

P.O. Box 1786
 1120 N. West County Rd.
 Hobbs, New Mexico 88241
 (575) 393-7316 - Office
 (575) 392-2206 - Fax
 basin-surveys.com

0' 1000' 2000' 3000' 4000'
 SCALE: 1" = 2000'

W.O. Number: JG 32226
 Survey Date: 3-17-2016

YELLOW TINT - USA LAND
 BLUE TINT - STATE LAND
 NATURAL COLOR - FEE LAND

COG
OPERATING,
LLC

Proposed Depth 20,935' MD.

Proposed Casing and Cement Program

TYPE	HOLE SIZE	CASING SIZE	CASING WT.	SETTING DEPTH	SACKS OF CEMENT	ESTIMATED TOC
SURF	17.5	13.375	54.5	1715	1100	0
INT 1	12.25	9.625	40	5420	2000	0
PROD	8.75	5.5	17	20,936	3000	4950

Casing/Cement Program: Additional Comments

Plan to drill a 17-1/2" hole to 1715' with Fresh Water. Run 13-3/8", 54.5# J-55 casing and cement to surface.

1st Intermediate - Drill 12-1/4" hole to 5420' with Brine, and run 9-5/8", 4300' of 40# J-55 plus ~1120' of 40# N/L-80 BTC and 2 stage cement to surface with DV Tool set ~100' above the reef to circulate cement to surface. If losses encountered in the Reef, will switch to fresh water through the rest of the interval to TD.

Production - Drill 8-3/4" hole to 20,936' with Cut Brine/XC Poly Mud, and run 5-1/2" 17# HCP110 and cement to tie back into 1st Intermediate Casing to 4920'.

Directional plan with Anticollision Assessment of Pygmy State 2H lateral is attached.

22. PROPOSED BLOWOUT PREVENTION PROGRAM

DOUBLE RAM 3000 PSI WP 3000 PSI TEST PRESS CAMERON

Thanks,

Alex