

District I
1625 N. French Dr., Hobbs, NM 88240
Phone: (575) 393-6161 Fax: (575) 393-0720
District II
311 S. First St., Artesia, NM 88210
Phone: (575) 748-1283 Fax: (575) 748-9720
District III
1000 Rio Brazos Road, Aztec, NM 87410
Phone: (505) 324-6178 Fax: (505) 324-6170
District IV
1220 S. St. Francis Dr., Santa Fe, NM 87505
Phone: (505) 476-3460 Fax: (505) 476-3462

State of New Mexico
Energy, Minerals & Natural Resources Department
OIL CONSERVATION DIVISION
1220 South St. Francis
Santa Fe, NM 87505

Form C-102
Revised August 1, 2011
Submit one copy to appropriate
District Office
☐ AMENDED REPORT

RECEIVED

WELL LOCATION AND ACREAGE DEDICATION PLAT

¹ API Number 30-02543183		² Pool Code 7280	³ Pool Name Bradley; Bone Spring
⁴ Property Code 316126	⁵ Property Name GREEN WAVE 20-29 FED		⁶ Well Number 71H
⁷ OGRID No. 6137	⁸ Operator Name DEVON ENERGY PRODUCTION COMPANY, L.P.		⁹ Elevation 3360.6

¹⁰ Surface Location

UL or lot no.	Section	Township	Range	Lot Idn	Feet from the	North/South line	Feet from the	East/West line	County
E	20	26 S	34 E		2345	NORTH	5	WEST	LEA

¹¹ Bottom Hole Location If Different From Surface

UL or lot no.	Section	Township	Range	Lot Idn	Feet from the	North/South line	Feet from the	East/West line	County
M	29	26 S	34 E		330	SOUTH	330	WEST	LEA

¹² Dedicated Acres	¹³ Joint or Infill	¹⁴ Consolidation Code	¹⁵ Order No.
320.00			

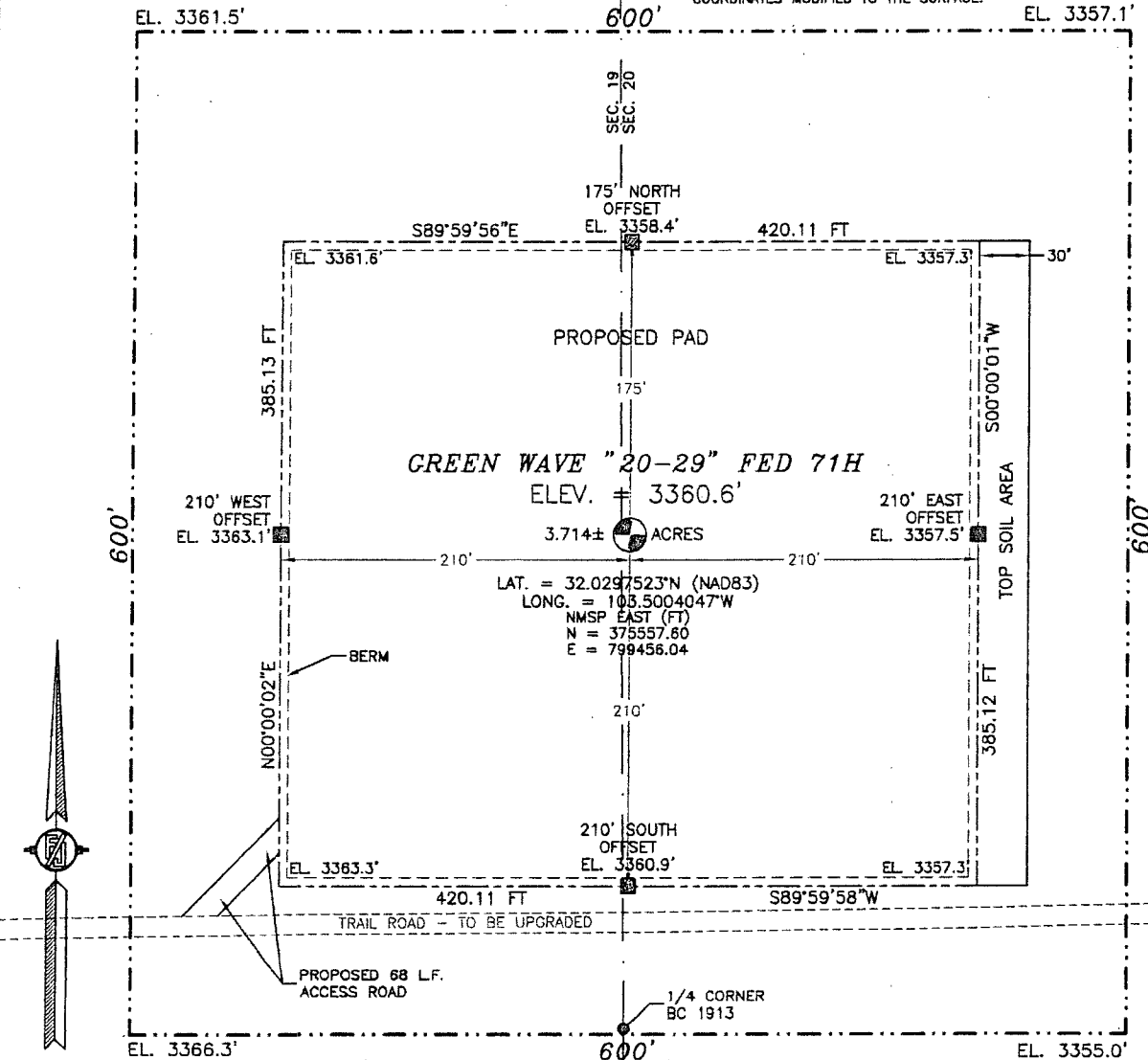
No allowable will be assigned to this completion until all interests have been consolidated or a non-standard unit has been approved by the division.

<p>NW CORNER SEC. 20 LAT. = 32.0361972°N LONG. = 103.5004293°W NMSP EAST (FT) N = 377902.09 E = 799430.33</p> <p>W/4 CORNER SEC. 20 LAT. = 32.0289377°N LONG. = 103.5004198°W NMSP EAST (FT) N = 375261.22 E = 799453.63</p> <p>SECTION CORNER LAT. = 32.0216783°N LONG. = 103.5004145°W NMSP EAST (FT) N = 372520.35 E = 799475.65</p> <p>W/4 CORNER SEC. 29 LAT. = 32.0144321°N LONG. = 103.5003980°W NMSP EAST (FT) N = 369984.32 E = 799501.09</p> <p>SW CORNER SEC. 29 LAT. = 32.0071765°N LONG. = 103.5003925°W NMSP EAST (FT) N = 367344.84 E = 799523.12</p>		<p>N/4 CORNER SEC. 20 LAT. = 32.0362184°N LONG. = 103.4919125°W NMSP EAST (FT) N = 377930.28 E = 802069.47</p> <p>GREEN WAVE "20-29" FED 71H ELEV. = 3360.6' LAT. = 32.0297523°N (NAD83) LONG. = 103.5004047°W NMSP EAST (FT) N = 375557.60 E = 799456.04</p> <p>QUARTER CORNER LAT. = 32.0216780°N LONG. = 103.4918672°W NMSP EAST (FT) N = 372640.77 E = 802124.71</p> <p>NOTE: LATITUDE AND LONGITUDE COORDINATES ARE SHOWN USING THE NORTH AMERICAN DATUM OF 1983 (NAD83). LISTED NEW MEXICO STATE PLANE EAST COORDINATES ARE GRID (NAD83). BASIS OF BEARING AND DISTANCES USED ARE NEW MEXICO STATE PLANE EAST COORDINATES MODIFIED TO THE SURFACE.</p> <p>SECTION CORNER LAT. = 32.0216672°N LONG. = 103.4833363°W NMSP EAST (FT) N = 372575.52 E = 804765.39</p> <p>E/4 CORNER SEC. 29 LAT. = 32.0144118°N LONG. = 103.4833363°W NMSP EAST (FT) N = 370013.03 E = 804789.47</p> <p>SE CORNER SEC. 29 LAT. = 32.0071540°N LONG. = 103.4833308°W NMSP EAST (FT) N = 367377.82 E = 804811.96</p>		<p>¹⁶ OPERATOR CERTIFICATION I hereby certify that the information contained herein is true and complete to the best of my knowledge and belief, and that this organization either owns a working interest or unleased mineral interest in the land including the proposed bottom hole location or has a right to drill this well at this location pursuant to a contract with an owner of such a mineral or working interest, or to a voluntary pooling agreement or a compulsory pooling order heretofore entered by the division.</p> <p><i>Linda Good</i> 6/26/2015 Signature Date</p> <p>Linda Good Printed Name</p> <p>linda.good@dvn.com E-mail Address</p>	
<p>W/4 CORNER SEC. 20 LAT. = 32.0289377°N LONG. = 103.5004198°W NMSP EAST (FT) N = 375261.22 E = 799453.63</p> <p>SECTION CORNER LAT. = 32.0216783°N LONG. = 103.5004145°W NMSP EAST (FT) N = 372520.35 E = 799475.65</p> <p>W/4 CORNER SEC. 29 LAT. = 32.0144321°N LONG. = 103.5003980°W NMSP EAST (FT) N = 369984.32 E = 799501.09</p> <p>SW CORNER SEC. 29 LAT. = 32.0071765°N LONG. = 103.5003925°W NMSP EAST (FT) N = 367344.84 E = 799523.12</p>		<p>¹⁷ SURVEYOR CERTIFICATION I hereby certify that the well location shown on this plat was plotted from field notes of actual surveys made by me or under my supervision, and that the same are true and correct to the best of my belief.</p> <p>APRIL 26 2015 Date of Survey</p> <p><i>[Signature]</i> Signature and Seal of Professional Surveyor</p> <p>Certificate Number: PILIXON-F. JARAMILLO, PLS 12797 SURVEY NO. 3846</p>			

APR 25 2016

SECTION 20, TOWNSHIP 26 SOUTH, RANGE 34 EAST, N.M.P.M.
LEA COUNTY, STATE OF NEW MEXICO
SITE MAP

NOTE: LATITUDE AND LONGITUDE COORDINATES ARE SHOWN USING THE NORTH AMERICAN DATUM OF 1983 (NAD83). LISTED NEW MEXICO STATE PLANE EAST COORDINATES ARE GRID (NAD83). BASIS OF BEARING AND DISTANCES USED ARE NEW MEXICO STATE PLANE EAST COORDINATES MODIFIED TO THE SURFACE.



010 50 100 200

SCALE 1" = 100'

DIRECTIONS TO LOCATION

FROM THE INTERSECTION OF STATE HWY #128 AND COUNTY ROAD #2 (BATTLE AXE ROAD) GO SOUTH AND WEST ON BATTLE AXE ROAD APPROX. 12.2 MILES TO A LEASE ROAD ON LEFT (SOUTH) TURN SOUTH GO APPROX. 0.6 MILE ROAD TURNS LEFT (EAST) TURN EAST GO APPROX. 1.8 MILES TO A LEASE ROAD ON RIGHT (SOUTH) TURN SOUTH ON LEASE ROAD GO APPROX. 2.5 MILES TO A TRAIL ROAD ON LEFT (EAST) TURN EAST ON TRAIL ROAD GO APPROX. 0.1 MILE LOCATION ON LEFT (NORTH) OF ROAD 220 FEET.

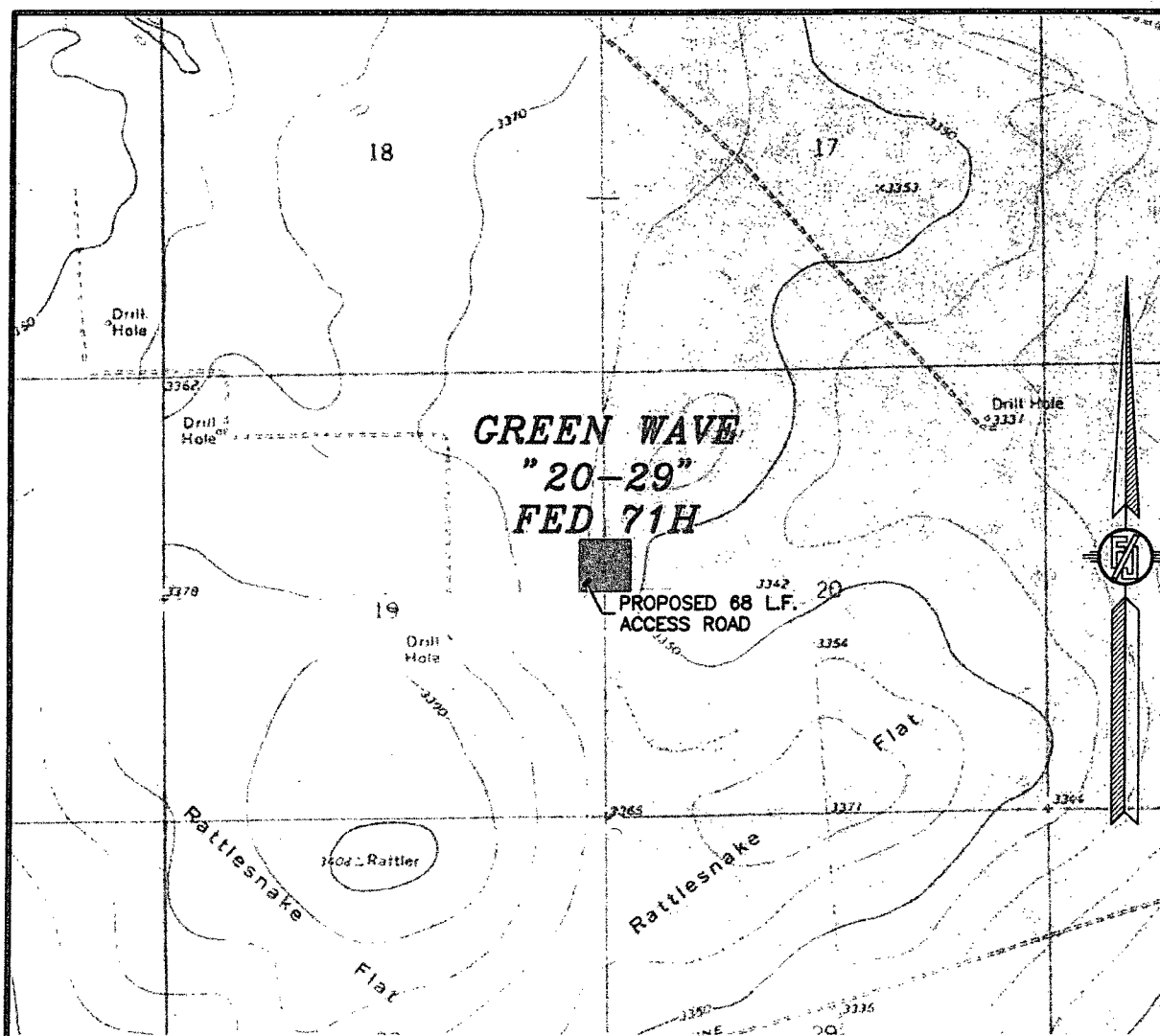
DEVON ENERGY PRODUCTION COMPANY, L.P.
GREEN WAVE "20-29" FED 71H
LOCATED 2345 FT. FROM THE NORTH LINE
AND 5 FT. FROM THE WEST LINE OF
SECTION 20, TOWNSHIP 26 SOUTH,
RANGE 34 EAST, N.M.P.M.
LEA COUNTY, STATE OF NEW MEXICO

APRIL 24, 2015

SURVEY NO. 3846

MADRON SURVEYING, INC. 301 SOUTH CANAL CARLSBAD, NEW MEXICO
(575) 234-3341

SECTION 20, TOWNSHIP 26 SOUTH, RANGE 34 EAST, N.M.P.M.
LEA COUNTY, STATE OF NEW MEXICO
LOCATION VERIFICATION MAP



USGS QUAD MAP:
ANDREWS PLACE

NOT TO SCALE

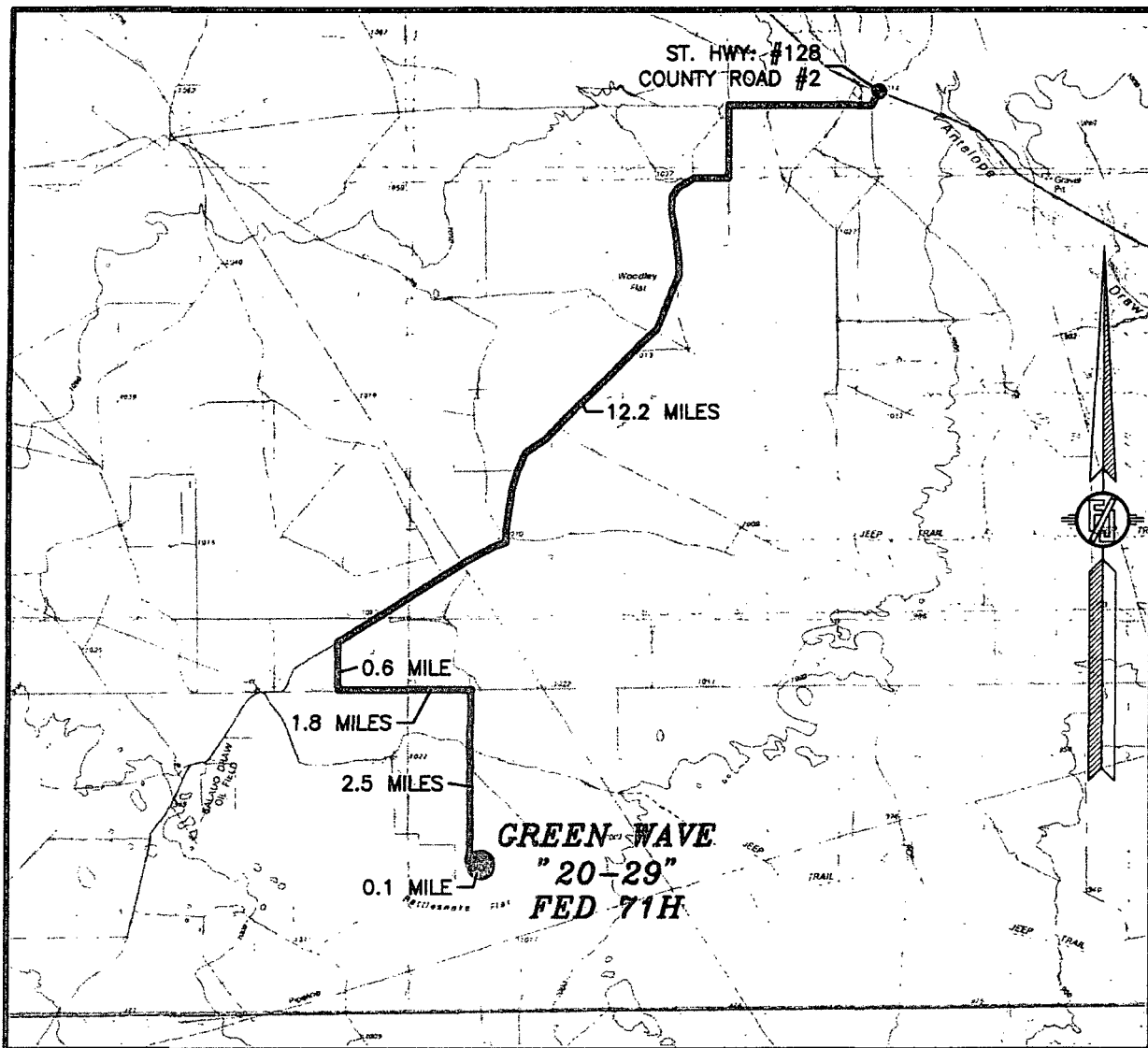
DEVON ENERGY PRODUCTION COMPANY, L.P.
GREEN WAVE "20-29" FED 71H
LOCATED 2345 FT. FROM THE NORTH LINE
AND 5 FT. FROM THE WEST LINE OF
SECTION 20, TOWNSHIP 26 SOUTH,
RANGE 34 EAST, N.M.P.M.
LEA COUNTY, STATE OF NEW MEXICO

APRIL 24, 2015

SURVEY NO. 3846

MADRON SURVEYING, INC. 301 SOUTH CANAL (575) 234-3341 CARLSBAD, NEW MEXICO

SECTION 20, TOWNSHIP 26 SOUTH, RANGE 34 EAST, N.M.P.M.
LEA COUNTY, STATE OF NEW MEXICO
VICINITY MAP



DISTANCES IN MILES

NOT TO SCALE

DIRECTIONS TO LOCATION

FROM THE INTERSECTION OF STATE HWY #128 AND COUNTY ROAD #2 (BATTLE AXE ROAD) GO SOUTH AND WEST ON BATTLE AXE ROAD APPROX. 12.2 MILES TO A LEASE ROAD ON LEFT (SOUTH) TURN SOUTH GO APPROX. 0.6 MILE ROAD TURNS LEFT (EAST) TURN EAST GO APPROX. 1.8 MILES TO A LEASE ROAD ON RIGHT (SOUTH) TURN SOUTH ON LEASE ROAD GO APPROX. 2.5 MILES TO A TRAIL ROAD ON LEFT (EAST) TURN EAST ON TRAIL ROAD GO APPROX. 0.1 MILE LOCATION ON LEFT (NORTH) OF ROAD 220 FEET.

DEVON ENERGY PRODUCTION COMPANY, L.P.

GREEN WAVE "20-29" FED 71H

LOCATED 2345 FT. FROM THE NORTH LINE
AND 5 FT. FROM THE WEST LINE OF

SECTION 20, TOWNSHIP 26 SOUTH,
RANGE 34 EAST, N.M.P.M.

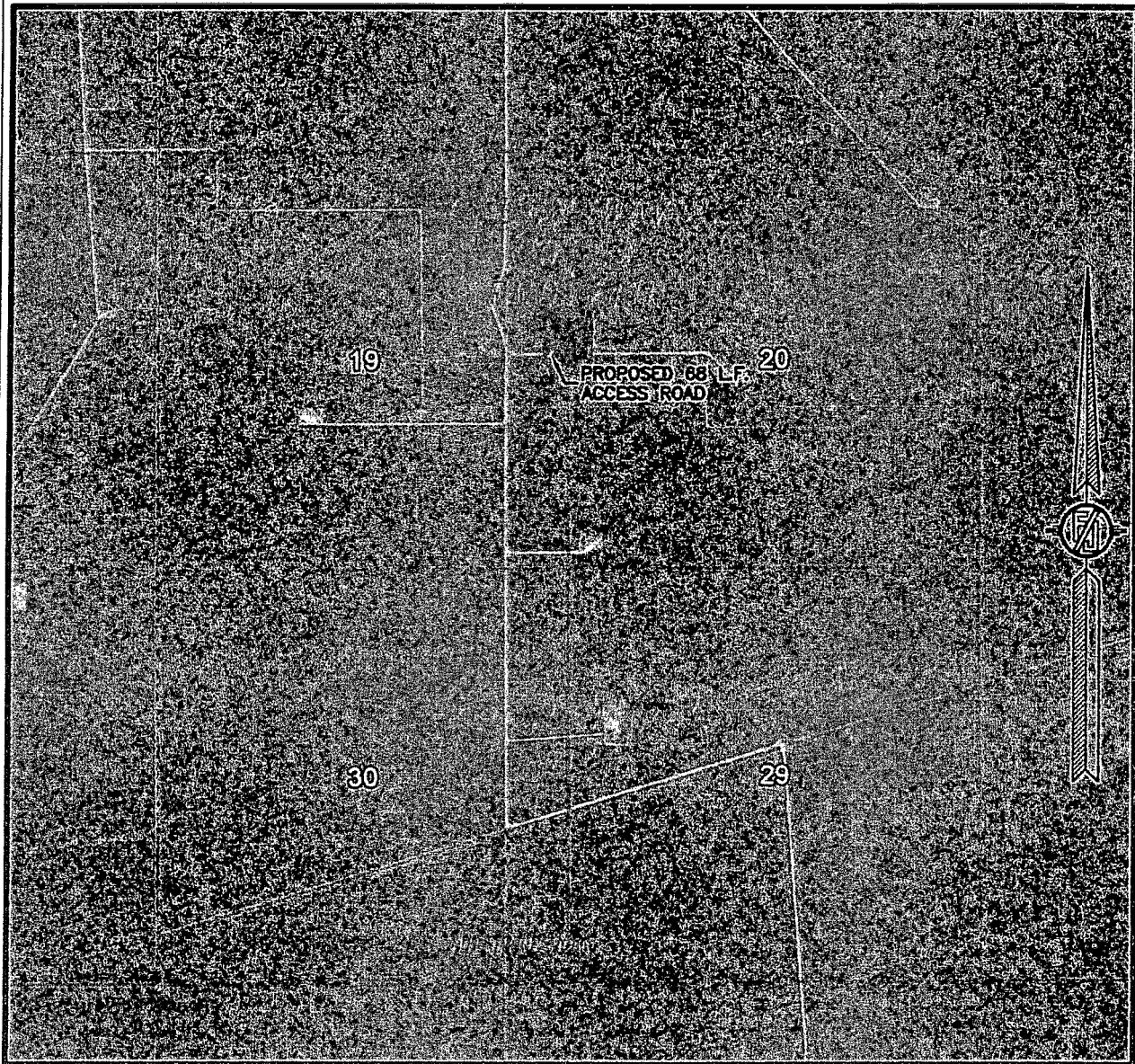
LEA COUNTY, STATE OF NEW MEXICO

APRIL 24, 2015

SURVEY NO. 3846

MADRON SURVEYING, INC. 301 SOUTH CANAL CARLSBAD, NEW MEXICO
(575) 234-3341

SECTION 20, TOWNSHIP 26 SOUTH, RANGE 34 EAST, N.M.P.M.
LEA COUNTY, STATE OF NEW MEXICO
AERIAL PHOTO



NOT TO SCALE
AERIAL PHOTO:
GOOGLE EARTH
APR. 2013

DEVON ENERGY PRODUCTION COMPANY, L.P.
GREEN WAVE "20-29" FED 71H
LOCATED 2345 FT. FROM THE NORTH LINE
AND 5 FT. FROM THE WEST LINE OF
SECTION 20, TOWNSHIP 26 SOUTH,
RANGE 34 EAST, N.M.P.M.
LEA COUNTY, STATE OF NEW MEXICO

APRIL 24, 2015

SURVEY NO. 3846

MADRON SURVEYING, INC. 301 SOUTH CANAL (575) 234-3341 CARLSBAD, NEW MEXICO

ST. HWY. #128
COUNTY ROAD #2

12.2 MILES

0.6 MILE

1.8 MILES

2.5 MILES

0.1 MILE

GREEN WAVE
"20-29" FED 71H

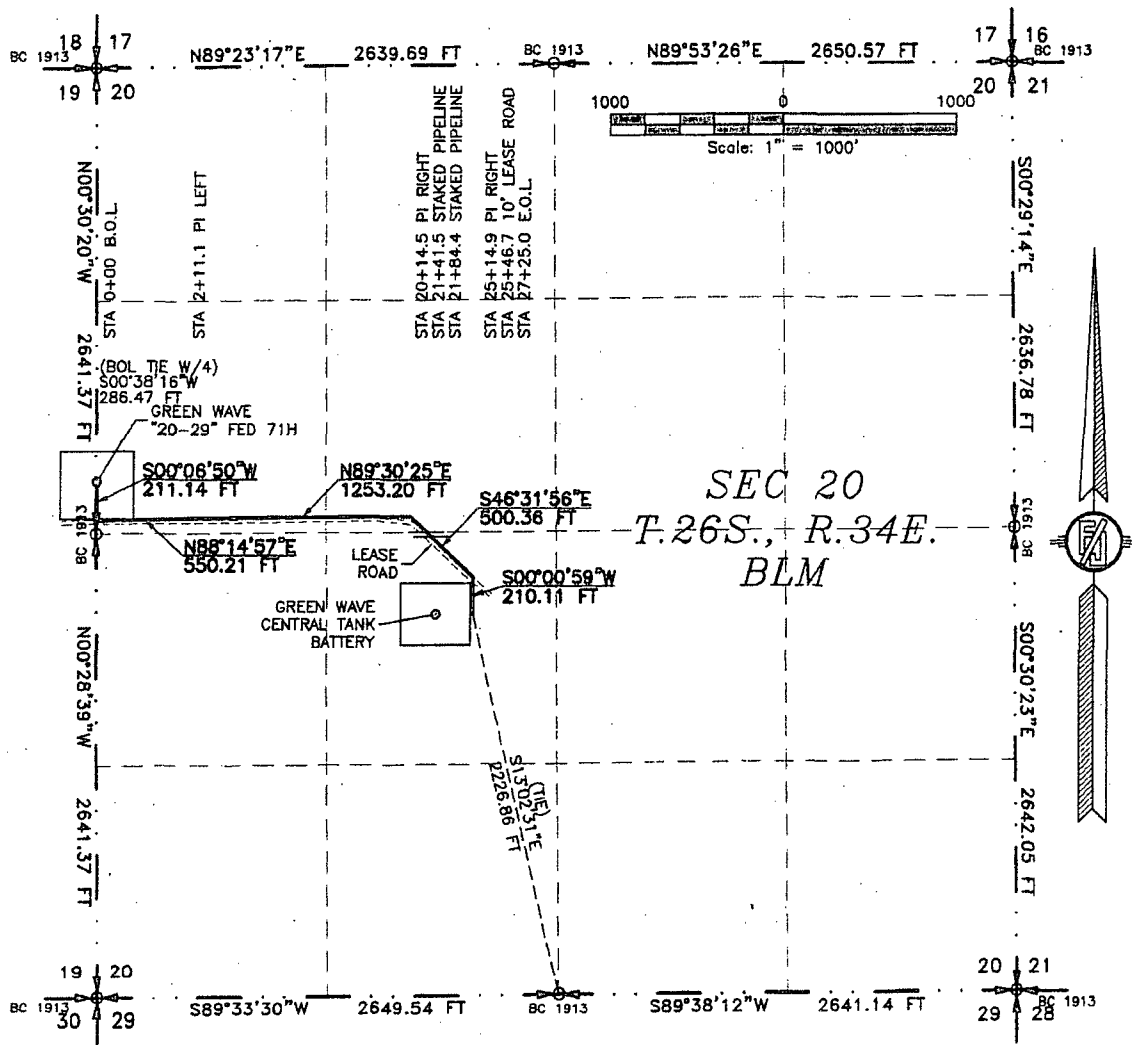
MADRON SURVEYING, INC. 301 SOUTH CANAL CARLSBAD, NEW MEXICO
(575) 234-3341

301 SOUTH CANAL
(575) 234-3341

FLOWLINE PLAT

6" POLY FIBER FLEX PRODUCTION LINE AND A 6" GAS LIFT LINE BURIED IN THE SAME TRENCH FROM GREEN WAVE "20-29" FED 71H TO GREEN WAVE CENTRAL TANK BATTERY

DEVON ENERGY PRODUCTION LINE COMPANY, L.P.
CENTERLINE SURVEY OF A PIPELINE CROSSING
SECTION 20, TOWNSHIP 26 SOUTH, RANGE 34 EAST, N.M.P.M.
LEA COUNTY, STATE OF NEW MEXICO
APRIL 13, 2016



SEE NEXT SHEET (2-4) FOR DESCRIPTION

SURVEYOR CERTIFICATE

I, FILIMON F. JARAMILLO, A NEW MEXICO PROFESSIONAL SURVEYOR NO. 12797, HEREBY CERTIFY THAT I HAVE CONDUCTED AND AM RESPONSIBLE FOR THIS SURVEY, THAT THIS SURVEY IS TRUE AND CORRECT TO THE BEST OF MY KNOWLEDGE AND BELIEF, AND THAT THIS SURVEY AND PLAT MEET THE MINIMUM STANDARDS FOR LAND SURVEYING IN THE STATE OF NEW MEXICO.

IN WITNESS WHEREOF, THIS CERTIFICATE IS EXECUTED AT CARLSBAD, NEW MEXICO, THIS 13 DAY OF APRIL 2016

FILIMON F. JARAMILLO PLS. 12797

MADRON SURVEYING, INC.
301 SOUTH CANAL
CARLSBAD, NEW MEXICO 88220
Phone (575) 234-3341

GENERAL NOTES

- 1.) THE INTENT OF THIS ROUTE SURVEY IS TO ACQUIRE AN EASEMENT.
- 2.) BASIS OF BEARING IS NMSP EAST MODIFIED TO SURFACE COORDINATES.

SHEET: 1-4

MADRON SURVEYING, INC.

301 SOUTH CANAL
(575) 234-3341

CARLSBAD, NEW MEXICO

SURVEY NO. 4099A

FLOWLINE PLAT

6" POLY FIBER FLEX PRODUCTION LINE AND A 6" GAS LIFT LINE BURIED IN THE SAME TRENCH FROM GREEN WAVE "20-29" FED 71H TO GREEN WAVE CENTRAL TANK BATTERY

DEVON ENERGY PRODUCTION LINE COMPANY, L.P.
CENTERLINE SURVEY OF A PIPELINE CROSSING
SECTION 20, TOWNSHIP 26 SOUTH, RANGE 34 EAST, N.M.P.M.
LEA COUNTY, STATE OF NEW MEXICO
APRIL 13, 2016

DESCRIPTION

A STRIP OF LAND 30 FEET WIDE CROSSING BUREAU OF LAND MANAGEMENT LAND IN SECTION 20, TOWNSHIP 26 SOUTH, RANGE 34 EAST, N.M.P.M., LEA COUNTY, STATE OF NEW MEXICO AND BEING 15 FEET EACH SIDE OF THE FOLLOWING DESCRIBED CENTERLINE SURVEY:

BEGINNING AT A POINT WITHIN THE SW/4 NW/4 OF SAID SECTION 20, TOWNSHIP 26 SOUTH, RANGE 34 EAST, N.M.P.M., WHENCE THE WEST QUARTER CORNER OF SAID SECTION 20, TOWNSHIP 26 SOUTH, RANGE 34 EAST, N.M.P.M. BEARS S00°38'16"W, A DISTANCE OF 286.47 FEET;
THENCE S00°06'50"W A DISTANCE OF 211.14 FEET TO AN ANGLE POINT OF THE LINE HEREIN DESCRIBED;
THENCE N88°14'57"E A DISTANCE OF 550.21 FEET TO AN ANGLE POINT OF THE LINE HEREIN DESCRIBED;
THENCE N89°30'25"E A DISTANCE OF 1253.20 FEET TO AN ANGLE POINT OF THE LINE HEREIN DESCRIBED;
THENCE S46°31'56"E A DISTANCE OF 500.36 FEET TO AN ANGLE POINT OF THE LINE HEREIN DESCRIBED;
THENCE S00°00'59"W A DISTANCE OF 210.11 FEET THE TERMINUS OF THIS CENTERLINE SURVEY, WHENCE THE SOUTH QUARTER CORNER OF SAID SECTION 20, TOWNSHIP 26 SOUTH, RANGE 34 EAST, N.M.P.M. BEARS S13°02'31"E, A DISTANCE OF 2226.86 FEET;

SAID STRIP OF LAND BEING 2725.03 FEET OR 165.15 RODS IN LENGTH, CONTAINING 1.877 ACRES MORE OR LESS AND BEING ALLOCATED BY FORTIES AS FOLLOWS:

SW/4 NW/4	1529.45 L.F.	92.69 RODS	1.053 ACRES
SE/4 NW/4	614.93 L.F.	37.27 RODS	0.424 ACRES
NE/4 SW/4	580.65 L.F.	35.19 RODS	0.400 ACRES

SURVEYOR CERTIFICATE

I, FILMON F. JARAMILLO, A NEW MEXICO PROFESSIONAL SURVEYOR NO. 12797, HEREBY CERTIFY THAT I HAVE CONDUCTED AND AM RESPONSIBLE FOR THIS SURVEY, THAT THIS SURVEY IS TRUE AND CORRECT TO THE BEST OF MY KNOWLEDGE AND BELIEF, AND THAT THIS SURVEY AND PLAT MEET THE MINIMUM STANDARDS FOR LAND SURVEYING IN THE STATE OF NEW MEXICO.

IN WITNESS WHEREOF, THIS CERTIFICATE IS EXECUTED AT CARLSBAD,

NEW MEXICO, THIS 14TH DAY OF APRIL 2016

GENERAL NOTES

- 1.) THE INTENT OF THIS ROUTE SURVEY IS TO ACQUIRE AN EASEMENT.
- 2.) BASIS OF BEARING IS NMSP EAST MODIFIED TO SURFACE COORDINATES.

SHEET: 2-4

MADRON SURVEYING, INC. 301 SOUTH CANAL CARLSBAD, NEW MEXICO

FILMON F. JARAMILLO, PLS. 12797
(575) 234-3341

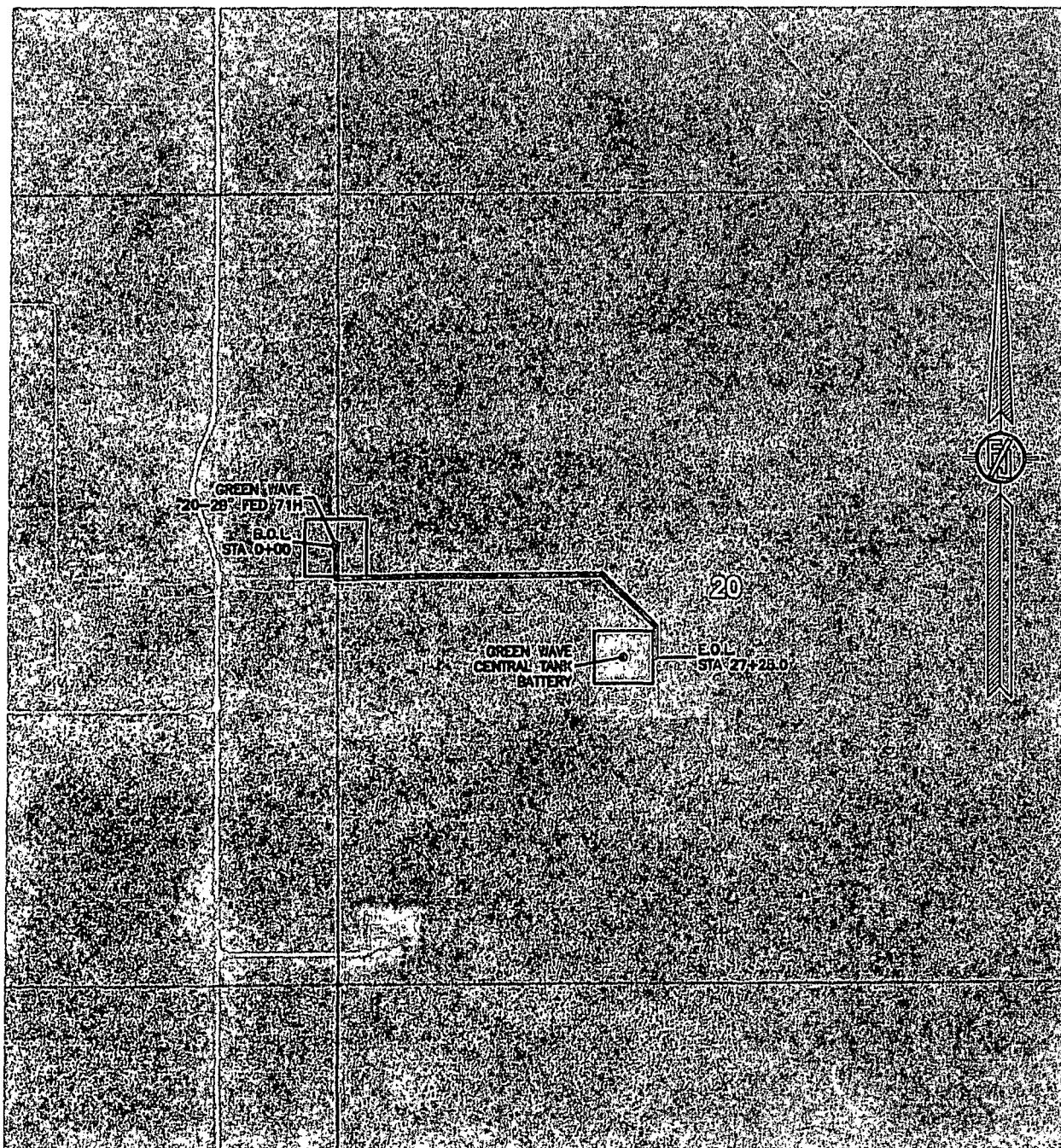
MADRON SURVEYING, INC.
301 SOUTH CANAL
CARLSBAD, NEW MEXICO 88220
Phone (575) 234-3341

SURVEY NO. 4099A

FLOWLINE PLAT

6" POLY FIBER FLEX PRODUCTION LINE AND A 6" GAS LIFT LINE BURIED IN THE SAME TRENCH FROM
GREEN WAVE "20-29" FED 71H TO GREEN WAVE CENTRAL TANK BATTERY

DEVON ENERGY PRODUCTION LINE COMPANY, L.P.
CENTERLINE SURVEY OF A PIPELINE CROSSING
SECTION 20, TOWNSHIP 26 SOUTH, RANGE 34 EAST, N.M.P.M.
LEA COUNTY, STATE OF NEW MEXICO
APRIL 13, 2016



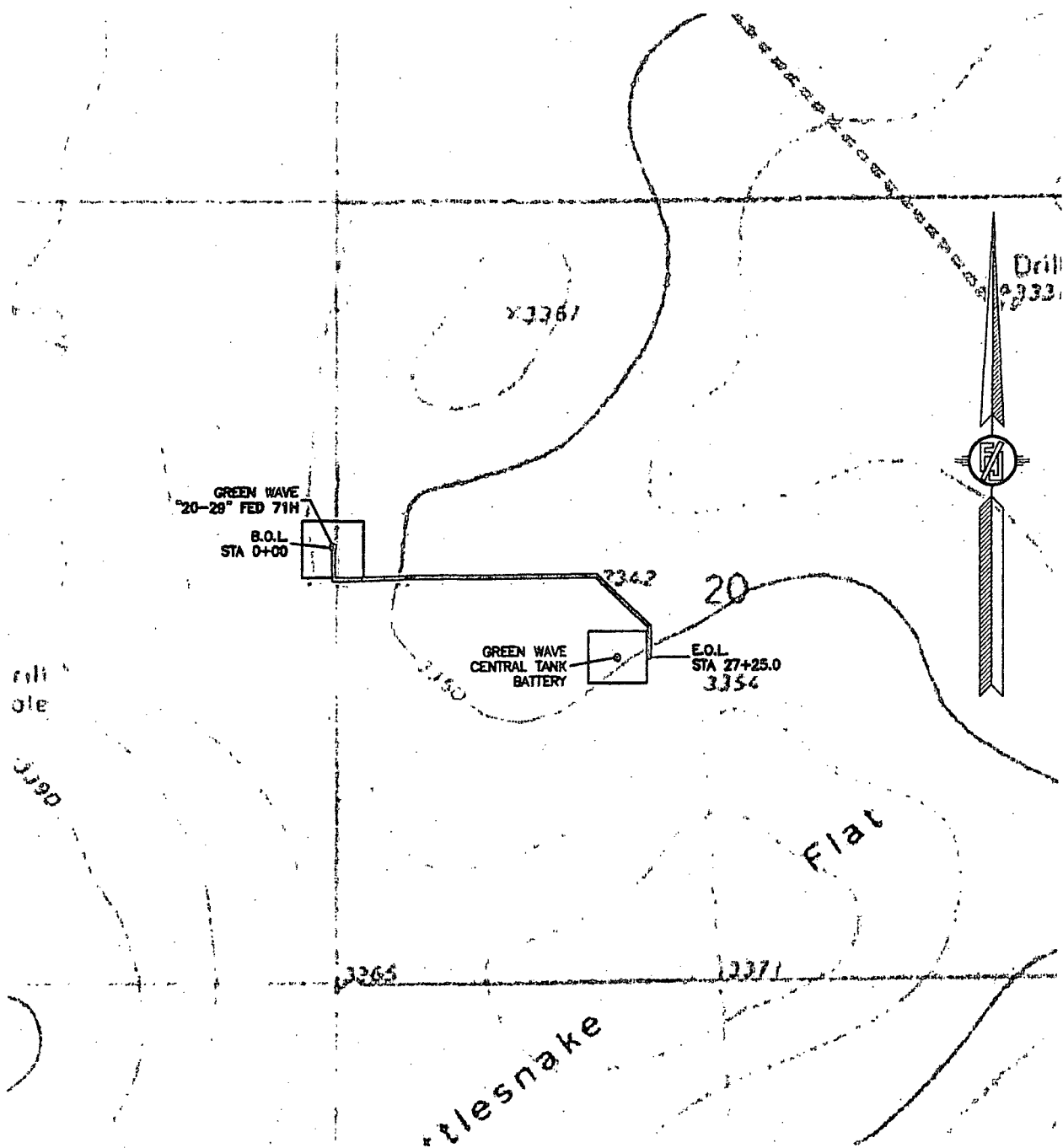
SHEET: 4-4

SURVEY NO. 4099A

MADRON SURVEYING, INC. 301 SOUTH CANAL (575) 234-3341 CARLSBAD, NEW MEXICO

6" POLY FIBER FLEX PRODUCTION LINE AND A 6" GAS LIFT LINE BURIED IN THE SAME TRENCH FROM GREEN WAVE "20-29" FED 71H TO GREEN WAVE CENTRAL TANK BATTERY

DEVON ENERGY PRODUCTION LINE COMPANY, L.P.
CENTERLINE SURVEY OF A PIPELINE CROSSING
SECTION 20, TOWNSHIP 26 SOUTH, RANGE 34 EAST, N.M.P.M.
LEA COUNTY, STATE OF NEW MEXICO
APRIL 13, 2016



MADRON SURVEYING, INC. 301 SOUTH CANAL (575) 234-3341 **CARLSBAD, NEW MEXICO**

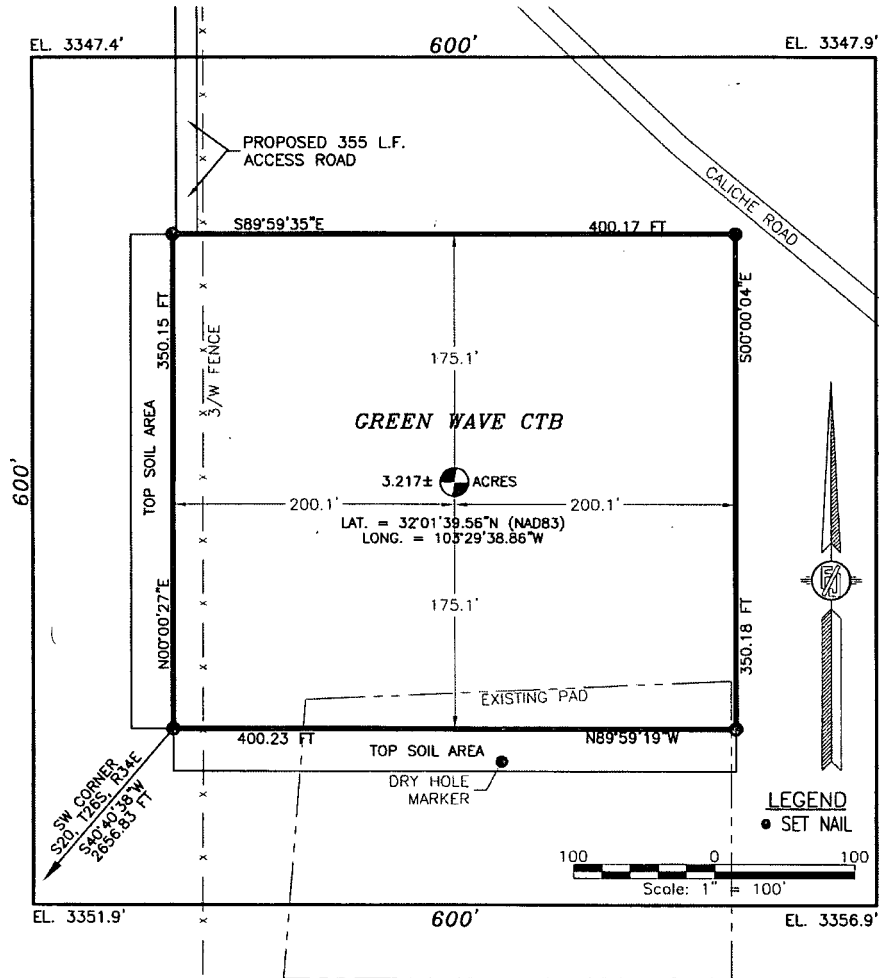
SURVEY NO. 4099A

301 SOUTH CANAL
(575) 234-3341

GREEN WAVE CTB

DEVON ENERGY PRODUCTION COMPANY, L.P.
IN THE N/2 NE/4 SW/4 OF
SECTION 20, TOWNSHIP 26 SOUTH, RANGE 34 EAST, N.M.P.M.
LEA COUNTY, STATE OF NEW MEXICO

JUNE 26, 2015



DESCRIPTION

A CERTAIN PIECE OR PARCEL OF LAND AND REAL ESTATE LYING IN BUREAU OF LAND MANAGEMENT LAND IN THE N/2 NE/4 SW/4 OF SECTION 20, TOWNSHIP 26 SOUTH, RANGE 34 EAST, N.M.P.M., LEA COUNTY, NEW MEXICO.

BEGINNING AT THE SOUTHWEST CORNER OF THE PARCEL, WHENCE THE SOUTHWEST CORNER OF SECTION 20, TOWNSHIP 26 SOUTH, RANGE 34 EAST, N.M.P.M. BEARS S40°40'38"W, A DISTANCE OF 2656.83 FEET;
THENCE N00°00'27"E A DISTANCE OF 350.15 FEET TO THE NORTHWEST CORNER OF THE PARCEL;
THENCE S89°59'35"E A DISTANCE OF 400.17 FEET TO THE NORTHEAST CORNER OF THE PARCEL;
THENCE S00°00'04"E A DISTANCE OF 350.18 FEET TO THE SOUTHEAST CORNER OF THE PARCEL;
THENCE N89°59'19"W A DISTANCE OF 400.23 FEET TO THE SOUTHWEST CORNER OF THE PARCEL, THE POINT OF BEGINNING;
CONTAINING 3.217 ACRES MORE OR LESS.

GENERAL NOTES

- 1.) THE INTENT OF THIS SURVEY IS TO ACQUIRE A BUSINESS LEASE FOR THE PURPOSE OF BUILDING A TANK BATTERY
- 2.) BASIS OF BEARING IS NEW MEXICO STATE PLANE EAST ZONE MODIFIED TO THE SURFACE (NAD83)

DRIVING DIRECTIONS: FROM INTERSECTION OF STATE HWY #128 AND COUNTY ROAD #2 GO SOUTH AND WEST 12.2 MILES, TURN SOUTH AT LEASE ROAD GO 0.6 MILE, TURN EAST GO 1.9 MILES, TURN SOUTH AT LEASE ROAD GO 2.5 MILES, TURN EAST AT LEASE ROAD GO 0.5 MILE TO GREEN WAVE CTB.

SHEET: 1-3

MADRON SURVEYING, INC.

SURVEYOR CERTIFICATE

I, FILMON F. JARAMILLO, A NEW MEXICO PROFESSIONAL SURVEYOR NO. 12797, HEREBY CERTIFY THAT I HAVE CONDUCTED AND AM RESPONSIBLE FOR THIS SURVEY, THAT THIS SURVEY IS TRUE AND CORRECT TO THE BEST OF MY KNOWLEDGE AND BELIEF, AND THAT THIS SURVEY AND PLAT MEET THE MINIMUM STANDARDS FOR LAND SURVEYING IN THE STATE OF NEW MEXICO.

IN WITNESS WHEREOF, THIS CERTIFICATE IS EXECUTED AT CARLSBAD, NEW MEXICO, THIS 22 DAY OF JUNE 2015

FILMON F. JARAMILLO, PLS. 12797

MADRON SURVEYING, INC.
301 SOUTH CANAL
CARLSBAD, NEW MEXICO 88220
Phone (575) 234-3341

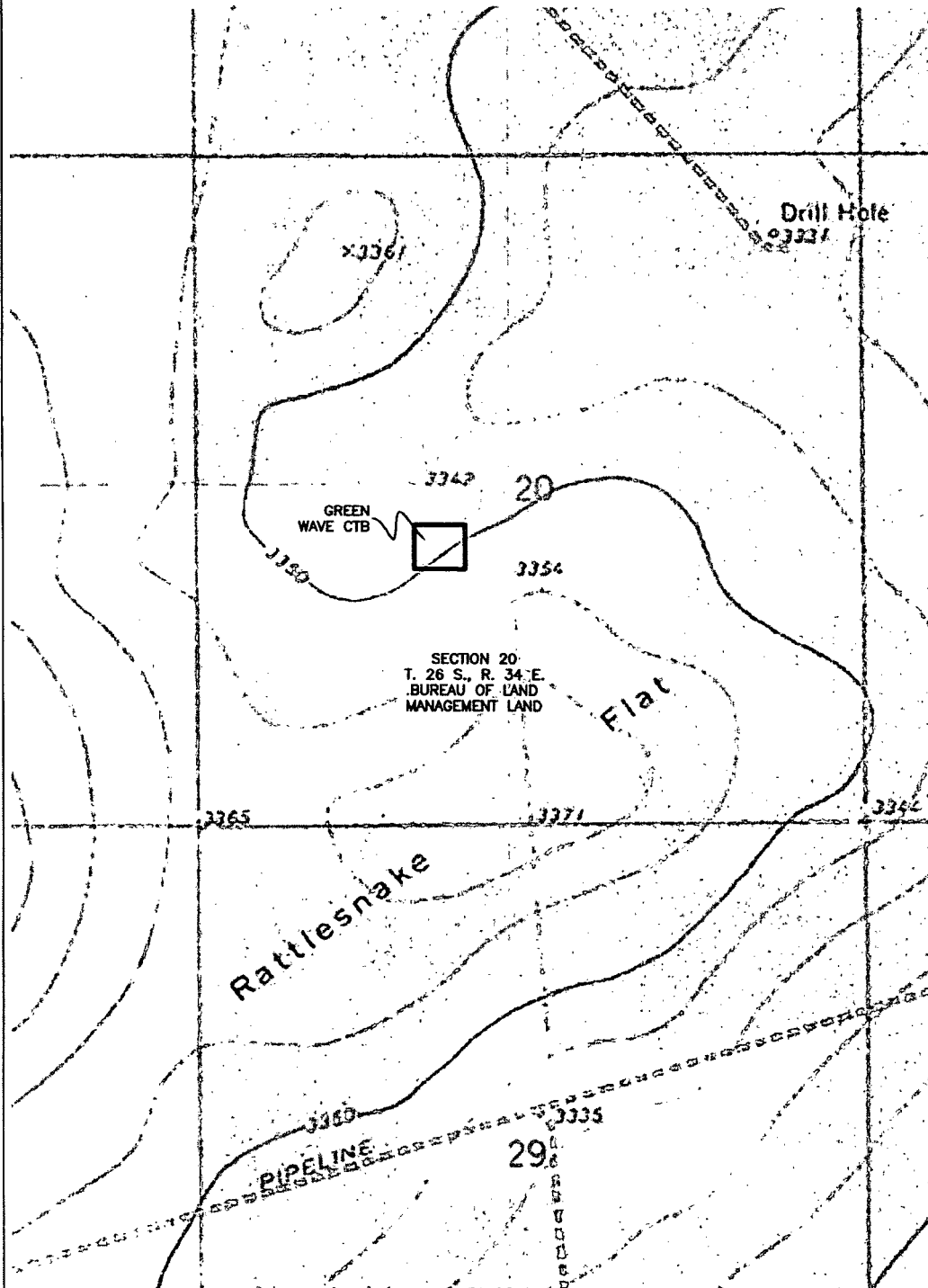
SURVEY NO. 4088
CARLSBAD, NEW MEXICO

GREEN WAVE CTB

DEVON ENERGY PRODUCTION COMPANY, L.P.
IN THE N/2 NE/4 SW/4 OF
SECTION 20, TOWNSHIP 26 SOUTH, RANGE 34 EAST, N.M.P.M.
LEA COUNTY, STATE OF NEW MEXICO

JUNE 26, 2015

QUAD MAP



SHEET: 2-3

MADRON SURVEYING, INC. 301 SOUTH CANAL (975) 234-3341 CARLSBAD, NEW MEXICO

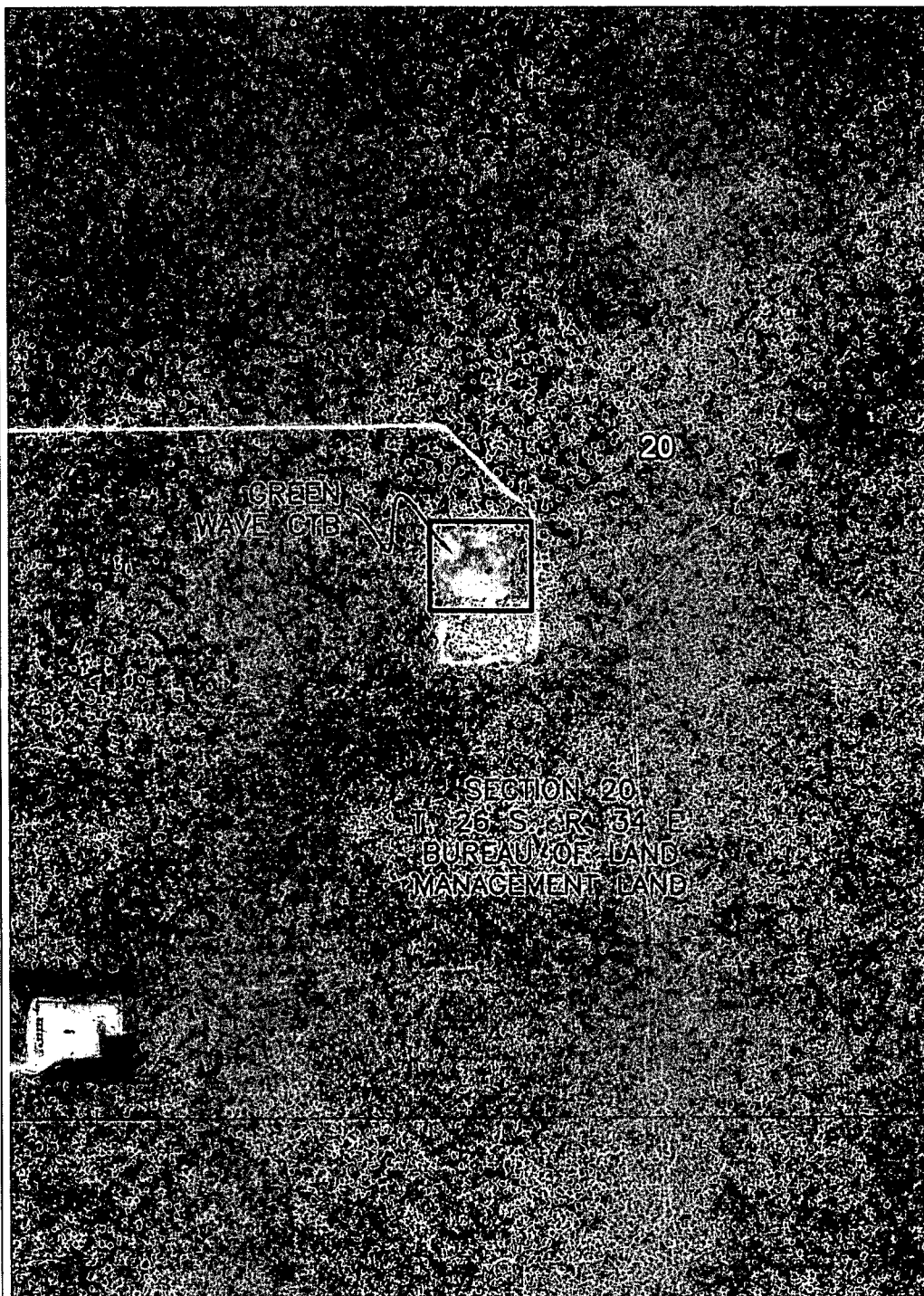
SURVEY NO. 4088

GREEN WAVE CTB

DEVON ENERGY PRODUCTION COMPANY, L.P.
IN THE N/2 NE/4 SW/4 OF
SECTION 20, TOWNSHIP 26 SOUTH, RANGE 34 EAST, N.M.P.M.
LEA COUNTY, STATE OF NEW MEXICO

JUNE 26, 2015

AERIAL PHOTO



SHEET: 3-3

SURVEY NO. 4088

MADRON SURVEYING, INC. 301 SOUTH CANAL (575) 234-3341 CARLSBAD, NEW MEXICO

One Mile Radius Map

Estimated distances to nearest wellbores:

*From SHL: Geen Wave 20 Federal 1H 400 ft E
 Green Wave 20 Federal 1H 215 ft E
 Wilson C Federal 1 405 ft E
 From BHL: Wilson C Federal 1 2975 ft NNE

24
 26S 34E

25

18

17

19

20

30

29

31

32

BRADLEY-FEDERAL 19

FEDERAL '53' COM

GREEN WAVE 20-29 FED
 71H

LEONARD-FEDERAL

SHL

1 MILE

BRADLEY-FEDERAL 19

MOSBACHER '20'

PATTON '19' FEDERAL

GREEN WAVE 20 FEDERAL
 1H

WILSON 'C' FEDERAL

1 MILE

BHL

devon

Green Wave 20-29 Fed Com 71H

1 Mile Radius Map

0 1,969
 FEET

- WELL SYMBOLS
- ABANDONED WATER WELL
- ABANDONED OIL WELL
- DRY AND ABANDONED WELL
- DRY HOLE WITH SHOW OF O&G
- OIL PRODUCING WELL
- PROPOSED

May 13, 2015