

78 District I
1625 N. French Dr., Hobbs, NM 88240
Phone: (575) 293-6161 Fax: (575) 293-0720
District II
311 S. First St., Artesia, NM 88210
Phone: (575) 748-1283 Fax: (575) 748-9720
District III
1000 Rio Brazos Road, Aztec, NM 87410
Phone: (505) 334-6178 Fax: (505) 334-6170
District IV
1220 S. St. Francis Dr., Santa Fe, NM 87505
Phone: (505) 476-3460 Fax: (505) 476-3462

State of New Mexico
Energy, Minerals & Natural Resources Department
OIL CONSERVATION DIVISION
1220 South St. Francis Dr.
Santa Fe, NM 87505

Form C-102
Revised August 1, 2011
Submit one copy to appropriate
District Office

APR 29 2016

☐ AMENDED REPORT

WELL LOCATION AND ACREAGE DEDICATION PLAT

¹ API Number 30-029-43209	² Pool Code 7280	³ Pool Name Bradley; Bone Spring
⁴ Property Code 716126	⁵ Property Name GREEN WAVE 20-29 FED	
⁶ OGRID No. 6137	⁷ Operator Name DEVON ENERGY PRODUCTION COMPANY, L.P.	⁸ Well Number 76H
		⁹ Elevation 3348.7

¹⁰ Surface Location

UL or lot no.	Section	Township	Range	Lot Idn	Feet from the	North/South line	Feet from the	East/West line	County
I	20	26 S	34 E		2560	SOUTH	1040	EAST	LEA

¹¹ Bottom Hole Location If Different From Surface

UL or lot no.	Section	Township	Range	Lot Idn	Feet from the	North/South line	Feet from the	East/West line	County
O	29	26 S	34 E		330	SOUTH	1650	EAST	LEA

¹² Dedicated Acres 240.00	¹³ Joint or Infill	¹⁴ Consolidation Code	¹⁵ Order No.
-----------------------------------------	-------------------------------	----------------------------------	-------------------------

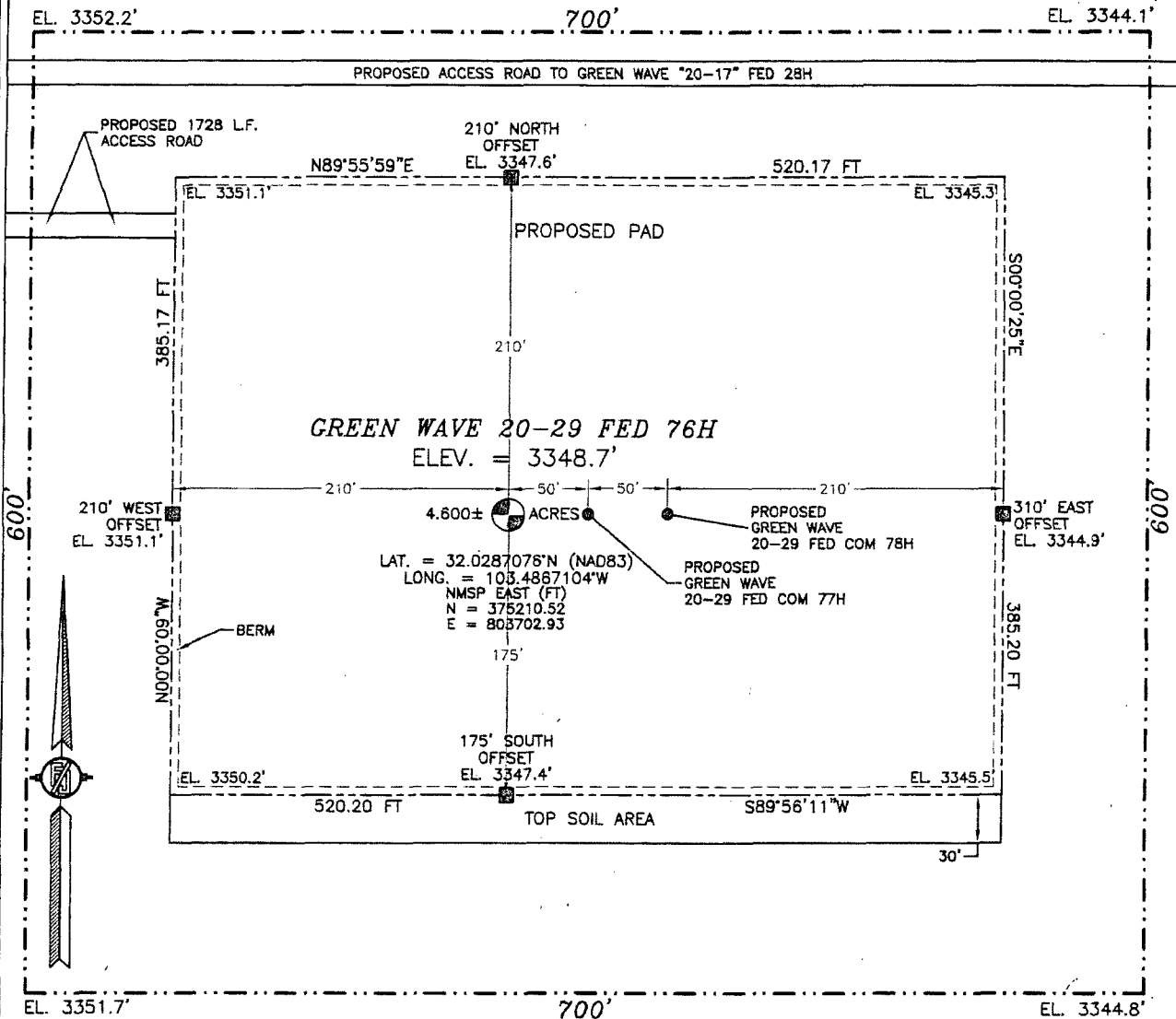
No allowable will be assigned to this completion until all interests have been consolidated or a non-standard unit has been approved by the division.

<p>NW CORNER SEC. 20 LAT. = 32.0361972°N LONG. = 103.5004293°W NMSP EAST (FT) N = 377902.09 E = 799430.33</p> <p>W/4 CORNER SEC. 20 LAT. = 32.0289377°N LONG. = 103.5004198°W NMSP EAST (FT) N = 375261.22 E = 799453.63</p> <p>SECTION CORNER LAT. = 32.0216783°N LONG. = 103.5004145°W NMSP EAST (FT) N = 372520.35 E = 799475.55</p> <p>W/4 CORNER SEC. 29 LAT. = 32.0144321°N LONG. = 103.5003980°W NMSP EAST (FT) N = 369984.32 E = 799501.09</p> <p>SW CORNER SEC. 29 LAT. = 32.0071755°N LONG. = 103.5003925°W NMSP EAST (FT) N = 367344.84 E = 799523.12</p>	<p>N/4 CORNER SEC. 20 LAT. = 32.0362184°N LONG. = 103.4919125°W NMSP EAST (FT) N = 377950.28 E = 802069.47</p> <p>GREEN WAVE 20-29 FED 76H ELEV. = 3348.7' LAT. = 32.0287076°N (NAD83) LONG. = 103.4867104°W NMSP EAST (FT) N = 375210.52 E = 803702.93</p> <p>QUARTER CORNER LAT. = 32.0216780°N LONG. = 103.4918672°W NMSP EAST (FT) N = 372640.77 E = 802124.71</p> <p>NOTE: LATITUDE AND LONGITUDE COORDINATES ARE SHOWN USING THE NORTH AMERICAN DATUM OF 1983 (NAD83). LISTED NEW MEXICO STATE PLANE EAST COORDINATES ARE GRID (NAD83). BASIS OF BEARING AND DISTANCES USED ARE NEW MEXICO STATE PLANE EAST COORDINATES MODIFIED TO THE SURFACE.</p> <p>W/4 CORNER SEC. 29 LAT. = 32.0090682°N LONG. = 103.4886534°W NMSP EAST (FT) N = 367697.47 E = 803159.45</p> <p>S/4 CORNER SEC. 29 LAT. = 32.0071540°N LONG. = 103.4833308°W NMSP EAST (FT) N = 367377.82 E = 804811.96</p>	<p>NE CORNER SEC. 20 LAT. = 32.0361753°N LONG. = 103.4833607°W NMSP EAST (FT) N = 377935.34 E = 804719.54</p> <p>E/4 CORNER SEC. 20 LAT. = 32.0289285°N LONG. = 103.4833553°W NMSP EAST (FT) N = 375299.06 E = 804742.05</p> <p>SECTION CORNER LAT. = 32.0216672°N LONG. = 103.4833470°W NMSP EAST (FT) N = 372657.52 E = 804765.39</p> <p>E/4 CORNER SEC. 29 LAT. = 32.0144116°N LONG. = 103.4833363°W NMSP EAST (FT) N = 370018.03 E = 804789.47</p>	<p>¹⁶ OPERATOR CERTIFICATION I hereby certify that the information contained herein is true and complete to the best of my knowledge and belief, and that this organization either owns a working interest or unleased mineral interest in the land including the proposed bottom hole location or has a right to drill this well at this location pursuant to a contract with an owner of such a mineral or working interest, or to a voluntary pooling agreement or a compulsory pooling order heretofore entered by the division.</p> <p><i>Linda Good</i> 7/10/2015 Signature Date</p> <p>Linda Good Printed Name</p> <p>linda.good@dmv.com E-mail Address</p> <p>¹⁷ SURVEYOR CERTIFICATION I hereby certify that the well location shown on this plat was plotted from field notes of actual surveys made by me or under my supervision, and that the same is true and correct to the best of my belief.</p> <p>APR 23 2015 Date of Survey</p> <p><i>[Signature]</i> Signature and Seal of Professional Surveyor</p> <p>Certificate Number: 11797 SURVEY NO. 3847</p>
--------------------------------------------------------------------------------------------------------------------------------------------------------------------------------------------------------------------------------------------------------------------------------------------------------------------------------------------------------------------------------------------------------------------------------------------------------------------------------------------------------------------------------------------------------------------------------------------------------------------------------------------------------------------------	--------------------------------------------------------------------------------------------------------------------------------------------------------------------------------------------------------------------------------------------------------------------------------------------------------------------------------------------------------------------------------------------------------------------------------------------------------------------------------------------------------------------------------------------------------------------------------------------------------------------------------------------------------------------------------------------------------------------------------------------------------------------------------------------------------------------------------------------------------------------------------------------------------------------------------------------------------------------------------------------------	----------------------------------------------------------------------------------------------------------------------------------------------------------------------------------------------------------------------------------------------------------------------------------------------------------------------------------------------------------------------------------------------------------------------------------------------------------------------------------------------------------------------------------------	------------------------------------------------------------------------------------------------------------------------------------------------------------------------------------------------------------------------------------------------------------------------------------------------------------------------------------------------------------------------------------------------------------------------------------------------------------------------------------------------------------------------------------------------------------------------------------------------------------------------------------------------------------------------------------------------------------------------------------------------------------------------------------------------------------------------------------------------------------------------------------------------------------------------------------------------------------------------------------------------------------------------------------------------------------------------------------------------------------------------------------------------

MAY 03 2016

SECTION 20, TOWNSHIP 26 SOUTH, RANGE 34 EAST, N.M.P.M.
LEA COUNTY, STATE OF NEW MEXICO
SITE MAP

NOTE: LATITUDE AND LONGITUDE COORDINATES ARE SHOWN USING THE NORTH AMERICAN DATUM OF 1983 (NAD83). LISTED NEW MEXICO STATE PLANE EAST COORDINATES ARE GRID (NAD83). BASIS OF BEARING AND DISTANCES USED ARE NEW MEXICO STATE PLANE EAST COORDINATES MODIFIED TO THE SURFACE.



010 50 100 200

SCALE 1" = 100'

DIRECTIONS TO LOCATION

FROM THE INTERSECTION OF STATE HWY #128 AND COUNTY ROAD #2 (BATTLE AXE ROAD) GO SOUTH AND WEST ON BATTLE AXE ROAD APPROX. 12.2 MILES TO A LEASE ROAD ON LEFT (SOUTH) TURN SOUTH GO APPROX. 0.6 MILE ROAD TURNS LEFT (EAST) TURN EAST GO APPROX. 1.8 MILES TO A LEASE ROAD ON RIGHT (SOUTH) TURN SOUTH GO APPROX. 2.5 MILES TO AN EXISTING ROAD ON LEFT (EAST) GO EAST ON EXISTING ROAD APPROX. 0.7 MILE TO A FENCE GATE AND ROAD LATH. FOLLOW ROAD LATHS NORTHEAST APPROX. 0.4 MILE TO LOCATION

DEVON ENERGY PRODUCTION COMPANY, L.P.

GREEN WAVE 20-29 FED 76H

LOCATED 2560 FT. FROM THE SOUTH LINE

AND 1040 FT. FROM THE EAST LINE OF

SECTION 20, TOWNSHIP 26 SOUTH,

RANGE 34 EAST, N.M.P.M.

LEA COUNTY, STATE OF NEW MEXICO

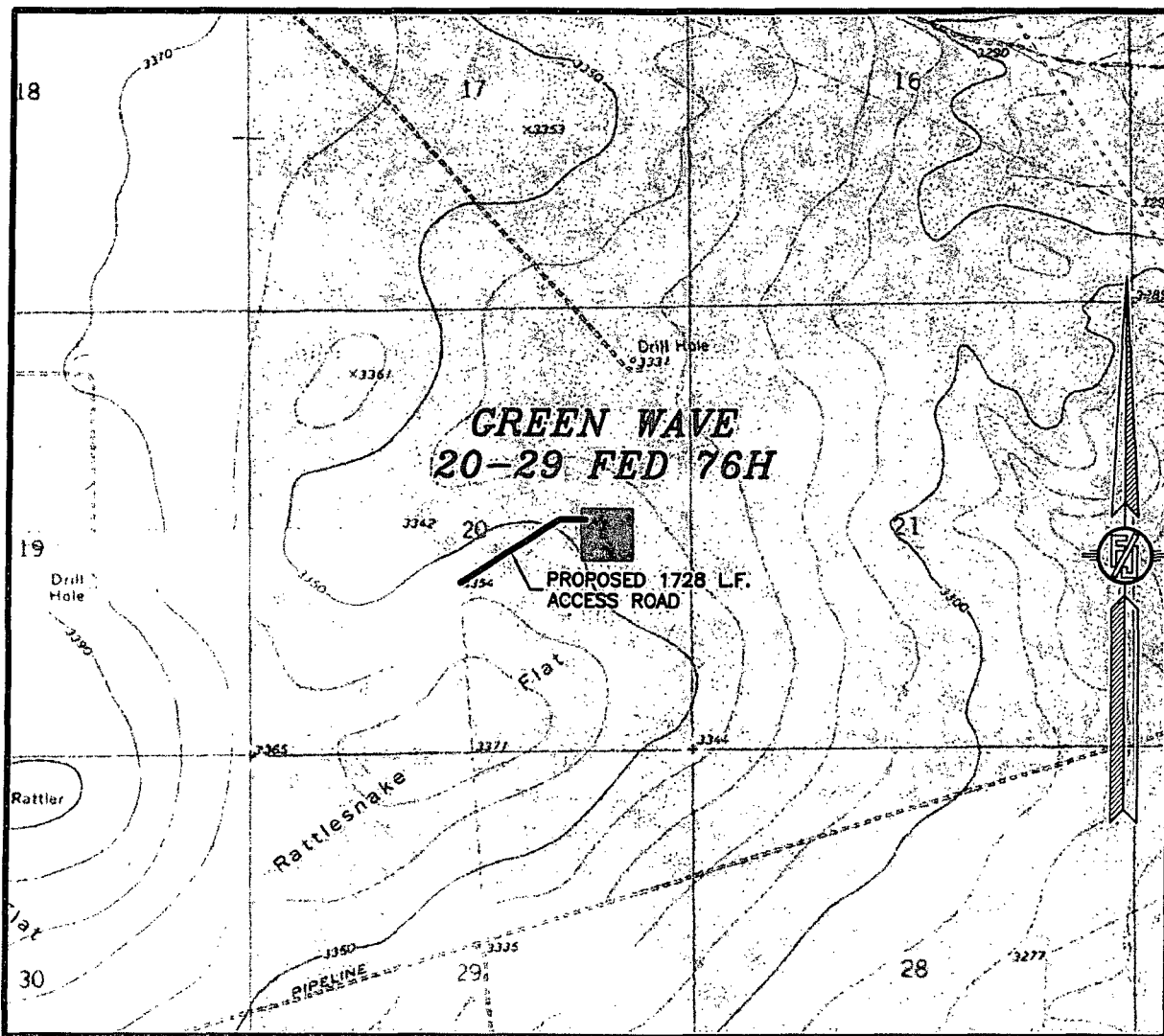
APRIL 23, 2015

SURVEY NO. 3847

MADRON SURVEYING, INC. 301 SOUTH CANAL (575) 234-3341

CARLSBAD, NEW MEXICO

SECTION 20, TOWNSHIP 26 SOUTH, RANGE 34 EAST, N.M.P.M.
LEA COUNTY, STATE OF NEW MEXICO
LOCATION VERIFICATION MAP



USGS QUAD MAP:
ANDREWS PLACE

NOT TO SCALE

DEVON ENERGY PRODUCTION COMPANY, L.P.
GREEN WAVE 20-29 FED 76H

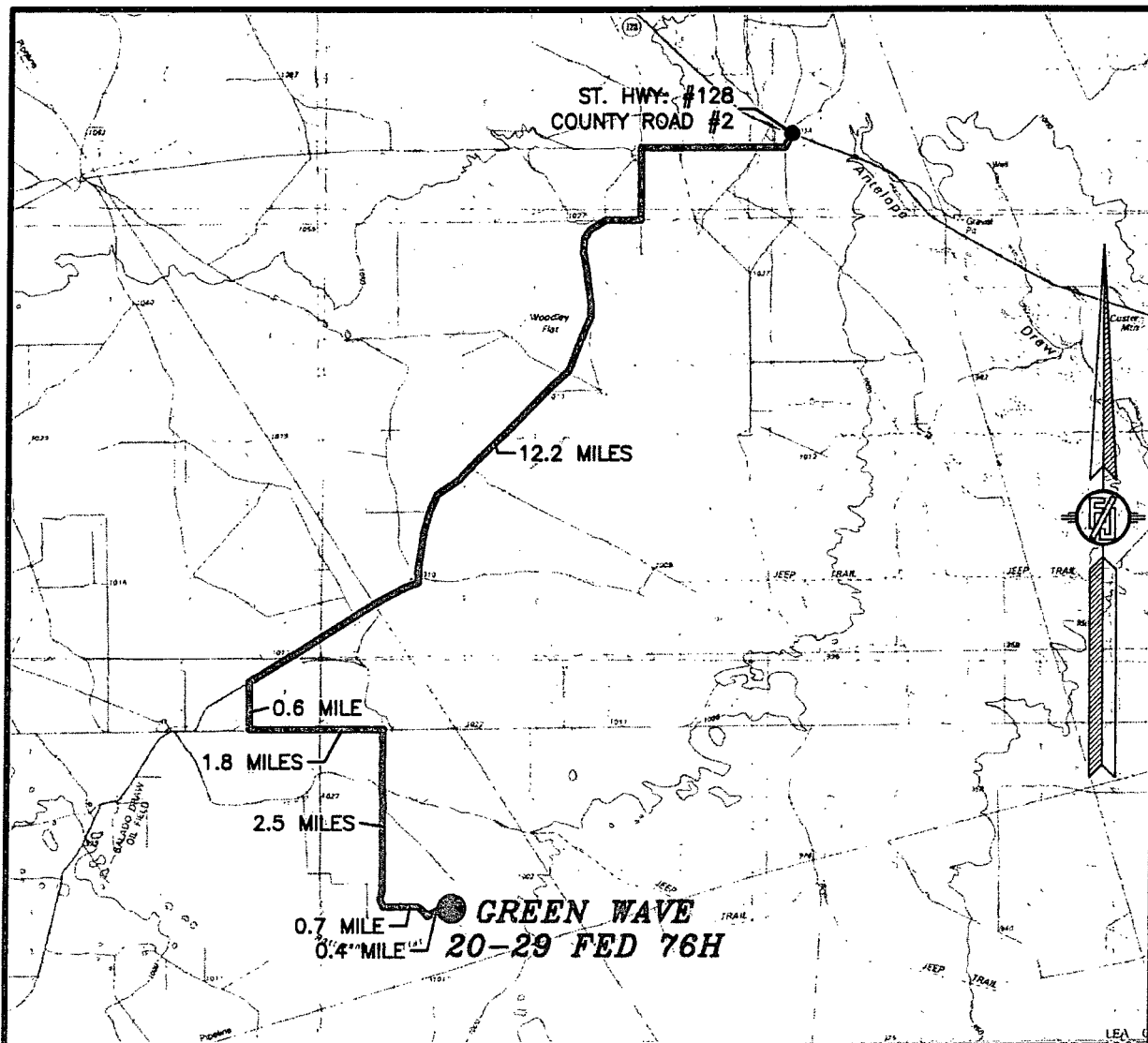
LOCATED 2560 FT. FROM THE SOUTH LINE
AND 1040 FT. FROM THE EAST LINE OF
SECTION 20, TOWNSHIP 26 SOUTH,
RANGE 34 EAST, N.M.P.M.
LEA COUNTY, STATE OF NEW MEXICO

APRIL 23, 2015

SURVEY NO. 3847

MADRON SURVEYING, INC. 301 SOUTH CANAL (575) 234-3341 CARLSBAD, NEW MEXICO

SECTION 20, TOWNSHIP 26 SOUTH, RANGE 34 EAST, N.M.P.M.
LEA COUNTY, STATE OF NEW MEXICO
VICINITY MAP



DISTANCES IN MILES

NOT TO SCALE

DIRECTIONS TO LOCATION

FROM THE INTERSECTION OF STATE HWY #128 AND COUNTY ROAD #2 (BATTLE AXE ROAD) GO SOUTH AND WEST ON BATTLE AXE ROAD APPROX. 12.2 MILES TO A LEASE ROAD ON LEFT (SOUTH) TURN SOUTH GO APPROX. 0.6 MILE ROAD TURNS LEFT (EAST) TURN EAST GO APPROX. 1.8 MILES TO A LEASE ROAD ON RIGHT (SOUTH) TURN SOUTH GO APPROX. 2.5 MILES TO AN EXISTING ROAD ON LEFT (EAST) GO EAST ON EXISTING ROAD APPROX. 0.7 MILE TO A FENCE GATE AND ROAD LATH. FOLLOW ROAD LATHS NORTHEAST APPROX. 0.4 MILE TO LOCATION

DEVON ENERGY PRODUCTION COMPANY, L.P.

GREEN WAVE 20-29 FED 76H

LOCATED 2560 FT. FROM THE SOUTH LINE
AND 1040 FT. FROM THE EAST LINE OF

SECTION 20, TOWNSHIP 26 SOUTH,
RANGE 34 EAST, N.M.P.M.

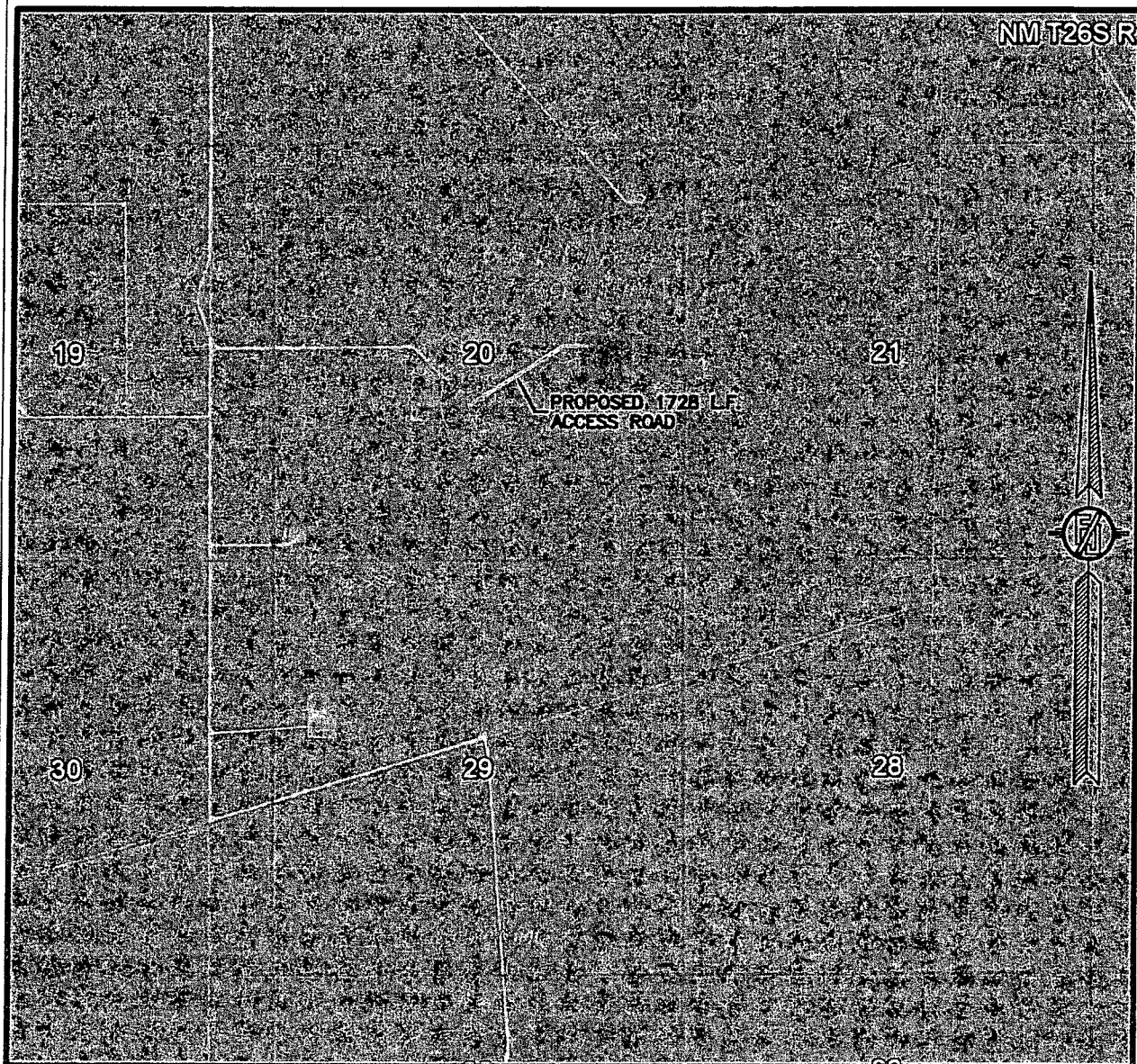
LEA COUNTY, STATE OF NEW MEXICO

APRIL 23, 2015

SURVEY NO. 3847

MADRON SURVEYING, INC. 301 SOUTH CANAL (575) 234-3341 CARLSBAD, NEW MEXICO

SECTION 20, TOWNSHIP 26 SOUTH, RANGE 34 EAST, N.M.P.M.
LEA COUNTY, STATE OF NEW MEXICO
AERIAL PHOTO



NOT TO SCALE
AERIAL PHOTO:
GOOGLE EARTH
APR. 2013

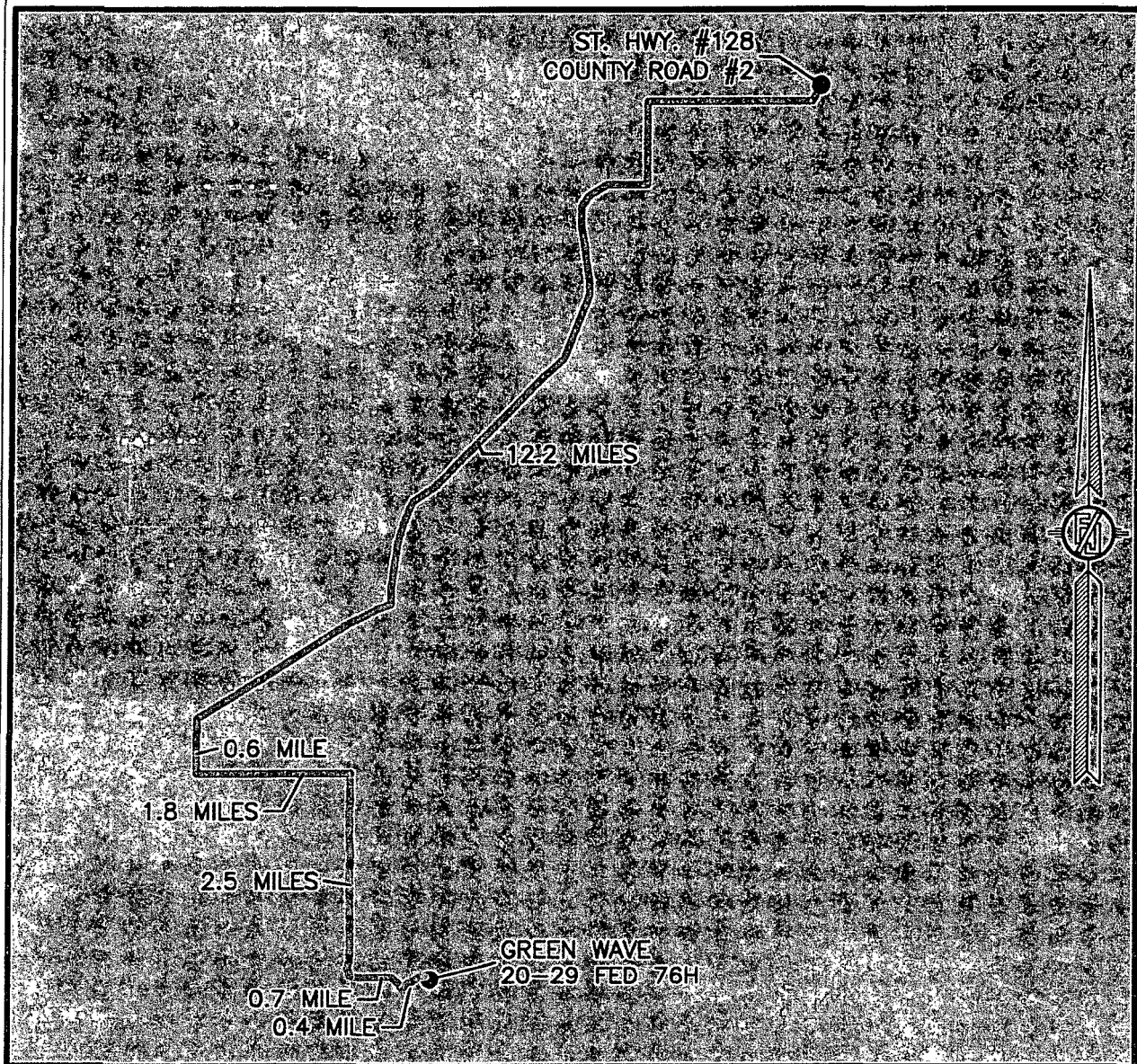
DEVON ENERGY PRODUCTION COMPANY, L.P.
GREEN WAVE 20-29 FED 76H
LOCATED 2560 FT. FROM THE SOUTH LINE
AND 1040 FT. FROM THE EAST LINE OF
SECTION 20, TOWNSHIP 26 SOUTH,
RANGE 34 EAST, N.M.P.M.
LEA COUNTY, STATE OF NEW MEXICO

APRIL 23, 2015

SURVEY NO. 3847

MADRON SURVEYING, INC. 301 SOUTH CANAL (575) 234-3341 CARLSBAD, NEW MEXICO

SECTION 20, TOWNSHIP 26 SOUTH, RANGE 34 EAST, N.M.P.M.
LEA COUNTY, STATE OF NEW MEXICO
AERIAL ACCESS ROUTE MAP



NOT TO SCALE
AERIAL PHOTO:
GOOGLE EARTH
APR. 2013

DEVON ENERGY PRODUCTION COMPANY, L.P.
GREEN WAVE 20-29 FED 76H
LOCATED 2560 FT. FROM THE SOUTH LINE
AND 1040 FT. FROM THE EAST LINE OF
SECTION 20, TOWNSHIP 26 SOUTH,
RANGE 34 EAST, N.M.P.M.
LEA COUNTY, STATE OF NEW MEXICO

APRIL 23, 2015

SURVEY NO. 3847

MADRON SURVEYING, INC. 301 SOUTH CANAL (575) 234-3341 CARLSBAD, NEW MEXICO

One Mile Radius Map

Estimated distances to nearest wellbores:

*From SHL: Leonard-Federal 1 2080 ft NNE
*From BHL: Brunson 1103H 3365 ft SSE



19
26S 34E

20

21

1 MILE

LEONARD-FEDERAL

GREEN WAVE 20-29 FED

76H

SHL

MOSBACHER '20'

GREEN WAVE 20 FEDERAL

1H

WILSON 'C' FEDERAL

29

28

30

1 MILE

BHL

32

33

devon

Green Wave 20-29 Fed 76H

1 Mile Radius Map

0 1,855
FEET

WELL SYMBOLS
ABANDONED WATER WELL
DRY AND ABANDONED WELL
OIL PRODUCING WELL
PROPOSED

May 5, 2015

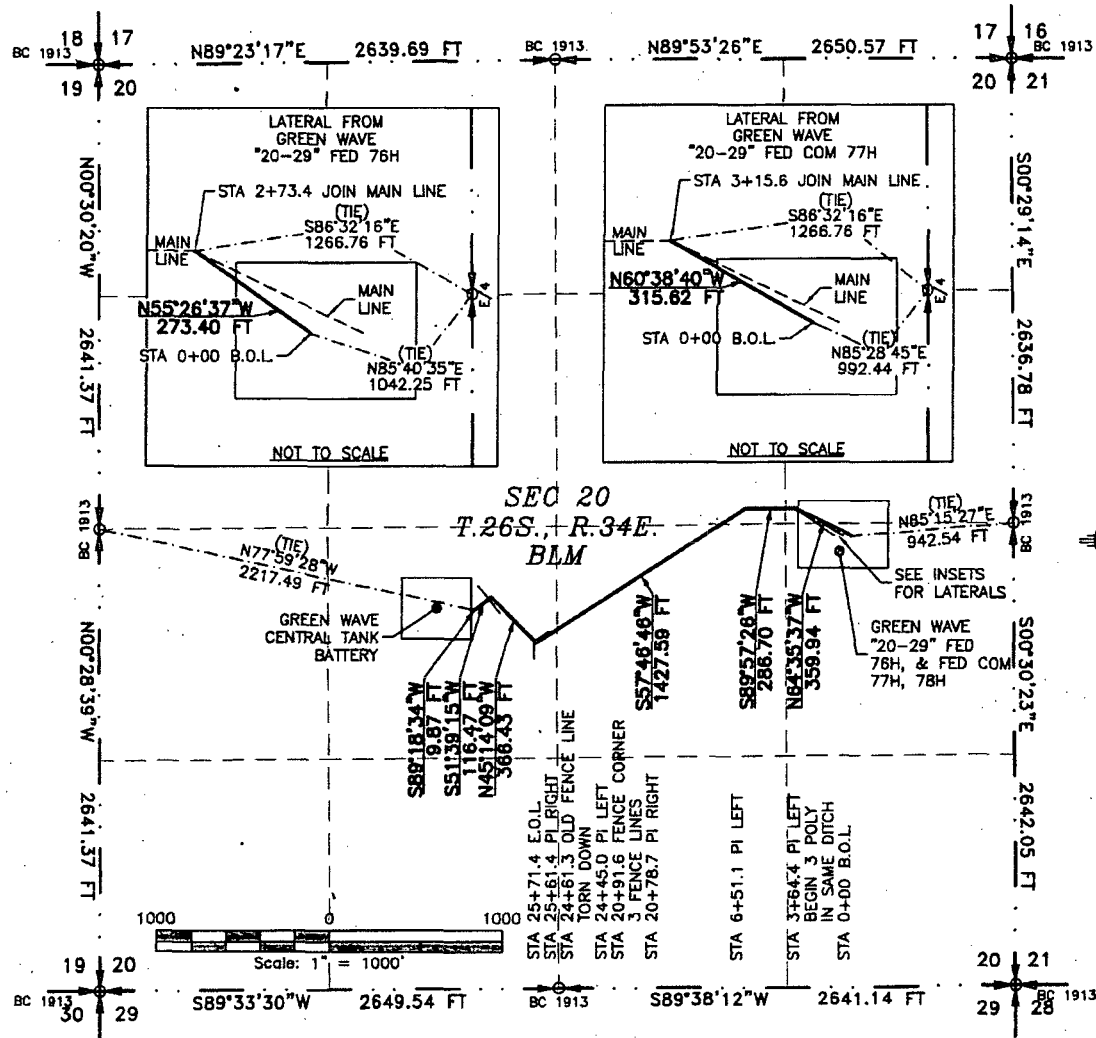
BRUNSON
1103H

20

FLOWLINE PLAT

THREE-6" POLY FLEX PRODUCTION LINES AND THREE-6" GAS LIFT LINES BURIED IN THE SAME DITCH FROM THE GREEN WAVE 20-29 FED 76H AND GREEN WAVE 20-29 FED COM 77H AND GREEN WAVE 20-29 FED COM 78H TO THE GREEN WAVE CENTRAL TANK BATTERY

DEVON ENERGY PRODUCTION COMPANY, L.P.
CENTERLINE SURVEY OF A PIPELINE CROSSING
SECTION 20, TOWNSHIP 26 SOUTH, RANGE 34 EAST, N.M.P.M.
LEA COUNTY, STATE OF NEW MEXICO
APRIL 15, 2016



SEE NEXT SHEET (2-4) FOR DESCRIPTION

SURVEYOR CERTIFICATE

I, FILMON F. JARAMILLO, A NEW MEXICO PROFESSIONAL SURVEYOR NO. 12797, HEREBY CERTIFY THAT I HAVE CONDUCTED AND AM RESPONSIBLE FOR THIS SURVEY, THAT THIS SURVEY IS TRUE AND CORRECT TO THE BEST OF MY KNOWLEDGE AND BELIEF, AND THAT THIS SURVEY AND PLAT MEET THE MINIMUM STANDARDS FOR LAND SURVEYING IN THE STATE OF NEW MEXICO.

IN WITNESS WHEREOF, THIS CERTIFICATE IS EXECUTED AT CARLSBAD,

NEW MEXICO, THIS 15 DAY OF APRIL 2016

[Signature]
FILMON F. JARAMILLO, P.E. 12797

MADRON SURVEYING, INC.
301 SOUTH CANAL
CARLSBAD, NEW MEXICO 88220
Phone (575) 234-3341

GENERAL NOTES

- 1.) THE INTENT OF THIS ROUTE SURVEY IS TO ACQUIRE AN EASEMENT.
- 2.) BASIS OF BEARING IS NMSP EAST MODIFIED TO SURFACE COORDINATES.

SHEET: 1-4

MADRON SURVEYING, INC. CARLSBAD, NEW MEXICO

SURVEY NO. 4101B

FLOWLINE PLAT

THREE-6" POLY FLEX PRODUCTION LINES AND THREE-6" GAS LIFT LINES BURIED IN THE SAME DITCH FROM THE GREEN WAVE 20-29 FED 76H AND GREEN WAVE 20-29 FED COM 77H AND GREEN WAVE 20-29 FED COM 78H TO THE GREEN WAVE CENTRAL TANK BATTERY

DEVON ENERGY PRODUCTION COMPANY, L.P.
CENTERLINE SURVEY OF A PIPELINE CROSSING
SECTION 20, TOWNSHIP 26 SOUTH, RANGE 34 EAST, N.M.P.M.
LEA COUNTY, STATE OF NEW MEXICO

APRIL 15, 2016

DESCRIPTION

A STRIP OF LAND 30 FEET WIDE CROSSING BUREAU OF LAND MANAGEMENT LAND IN SECTION 20, TOWNSHIP 26 SOUTH, RANGE 34 EAST, N.M.P.M., LEA COUNTY, STATE OF NEW MEXICO AND BEING 15 FEET EACH SIDE OF THE FOLLOWING DESCRIBED CENTERLINE SURVEY:

MAIN LINE FROM GREEN WAVE "20-29" FED COM 78H

BEGINNING AT A POINT WITHIN THE NE/4 SE/4 OF SAID SECTION 20, TOWNSHIP 26 SOUTH, RANGE 34 EAST, N.M.P.M., WHENCE THE EAST QUARTER CORNER OF SAID SECTION 20, TOWNSHIP 26 SOUTH, RANGE 34 EAST, N.M.P.M. BEARS N85°15'27"E, A DISTANCE OF 942.54 FEET;

THENCE N64°35'37"W A DISTANCE OF 359.94 FEET TO AN ANGLE POINT OF THE LINE HEREIN DESCRIBED;

THENCE S89°57'26"W A DISTANCE OF 286.70 FEET TO AN ANGLE POINT OF THE LINE HEREIN DESCRIBED;

THENCE S57°46'46"W A DISTANCE OF 1427.59 FEET TO AN ANGLE POINT OF THE LINE HEREIN DESCRIBED;

THENCE N45°14'09"W A DISTANCE OF 366.43 FEET TO AN ANGLE POINT OF THE LINE HEREIN DESCRIBED;

THENCE S51°39'15"W A DISTANCE OF 116.47 FEET TO AN ANGLE POINT OF THE LINE HEREIN DESCRIBED;

THENCE S89°18'34"W A DISTANCE OF 9.87 FEET THE TERMINUS OF THIS CENTERLINE SURVEY, WHENCE THE WEST QUARTER CORNER OF SAID SECTION 20, TOWNSHIP 26 SOUTH, RANGE 34 EAST, N.M.P.M. BEARS N77°59'28"W, A DISTANCE OF 2217.49 FEET;

SAID STRIP OF LAND BEING 2566.99 FEET OR 155.58 RODS IN LENGTH, CONTAINING 1.768 ACRES MORE OR LESS AND BEING ALLOCATED BY FORTIES AS FOLLOWS:

NE/4 SE/4	163.51 L.F.	9.91 RODS	0.113 ACRES
SE/4 NE/4	255.24 L.F.	15.47 RODS	0.176 ACRES
SW/4 NE/4	393.66 L.F.	23.86 RODS	0.271 ACRES
NW/4 SE/4	1120.27 L.F.	67.90 RODS	0.772 ACRES
NE/4 SW/4	634.31 L.F.	38.44 RODS	0.437 ACRES

LATERAL FROM GREEN WAVE "20-29" FED COM 77H

BEGINNING AT A POINT WITHIN THE NE/4 SE/4 OF SAID SECTION 20, TOWNSHIP 26 SOUTH, RANGE 34 EAST, N.M.P.M., WHENCE THE EAST QUARTER CORNER OF SAID SECTION 20, TOWNSHIP 26 SOUTH, RANGE 34 EAST, N.M.P.M. BEARS N85°28'45"E, A DISTANCE OF 992.44 FEET;

THENCE N60°38'40"W A DISTANCE OF 315.62 FEET THE TERMINUS OF THIS CENTERLINE SURVEY, WHENCE THE EAST QUARTER CORNER OF SAID SECTION 20, TOWNSHIP 26 SOUTH, RANGE 34 EAST, N.M.P.M. BEARS S86°32'16"E, A DISTANCE OF 1266.76 FEET;

SAID STRIP OF LAND BEING 315.62 FEET OR 19.13 RODS IN LENGTH, CONTAINING 0.217 ACRES MORE OR LESS AND BEING ALLOCATED BY FORTIES AS FOLLOWS:

NE/4 SE/4	143.31 L.F.	8.69 RODS	0.099 ACRES
SE/4 NE/4	172.31 L.F.	10.44 RODS	0.119 ACRES

LATERAL FROM GREEN WAVE "20-29" FED 76H

BEGINNING AT A POINT WITHIN THE NE/4 SE/4 OF SAID SECTION 20, TOWNSHIP 26 SOUTH, RANGE 34 EAST, N.M.P.M., WHENCE THE EAST QUARTER CORNER OF SAID SECTION 20, TOWNSHIP 26 SOUTH, RANGE 34 EAST, N.M.P.M. BEARS N85°40'35"E, A DISTANCE OF 1042.25 FEET;

THENCE N55°26'37"W A DISTANCE OF 273.40 FEET THE TERMINUS OF THIS CENTERLINE SURVEY, WHENCE THE EAST QUARTER CORNER OF SAID SECTION 20, TOWNSHIP 26 SOUTH, RANGE 34 EAST, N.M.P.M. BEARS S86°32'16"E, A DISTANCE OF 1266.76 FEET;

SAID STRIP OF LAND BEING 273.40 FEET OR 16.57 RODS IN LENGTH, CONTAINING 0.188 ACRES MORE OR LESS AND BEING ALLOCATED BY FORTIES AS FOLLOWS:

NE/4 SE/4	124.13 L.F.	7.52 RODS	0.085 ACRES
SE/4 NE/4	149.27 L.F.	9.05 RODS	0.103 ACRES

SURVEYOR CERTIFICATE

I, FILMON F. JARAMILLO, A NEW MEXICO PROFESSIONAL SURVEYOR NO. 12797, HEREBY CERTIFY THAT I HAVE CONDUCTED AND AM RESPONSIBLE FOR THIS SURVEY, THAT THIS SURVEY IS TRUE AND CORRECT TO THE BEST OF MY KNOWLEDGE AND BELIEF, AND THAT THIS SURVEY AND PLAT MEET THE MINIMUM STANDARDS FOR LAND SURVEYING IN THE STATE OF NEW MEXICO.

IN WITNESS WHEREOF, THIS CERTIFICATE IS EXECUTED AT CARLSBAD,

NEW MEXICO, THIS 15 DAY OF APRIL 2016

GENERAL NOTES

1.) THE INTENT OF THIS ROUTE SURVEY IS TO ACQUIRE AN EASEMENT.

2.) BASIS OF BEARING IS NMSP EAST MODIFIED TO SURFACE COORDINATES.

SHEET: 2-4

MADRON SURVEYING, INC. (575) 234-3341

FILMON F. JARAMILLO, PLS. 12797
MADRON SURVEYING, INC.
301 SOUTH CANAL
CARLSBAD, NEW MEXICO 88220
Phone (575) 234-3341

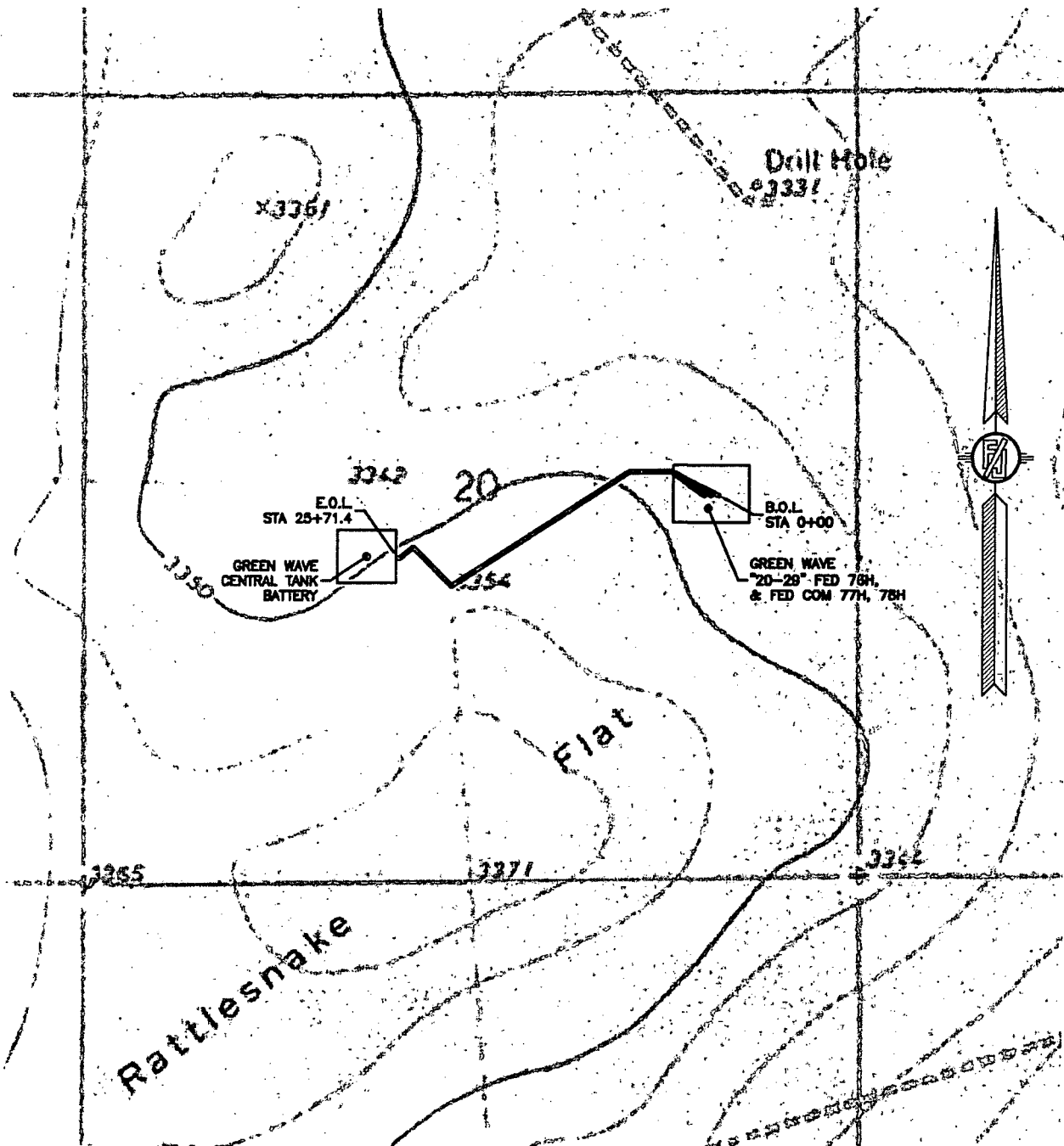
SURVEY NO. 4101B

CARLSBAD, NEW MEXICO

FLOWLINE PLAT

THREE-6" POLY FLEX PRODUCTION LINES AND THREE-6" GAS LIFT LINES BURIED IN THE SAME
DITCH FROM THE GREEN WAVE 20-29 FED 76H AND GREEN WAVE 20-29 FED COM 77H AND GREEN
WAVE 20-29 FED COM 78H TO THE GREEN WAVE CENTRAL TANK BATTERY

DEVON ENERGY PRODUCTION COMPANY, L.P.
CENTERLINE SURVEY OF A PIPELINE CROSSING
SECTION 20, TOWNSHIP 26 SOUTH, RANGE 34 EAST, N.M.P.M.
LEA COUNTY, STATE OF NEW MEXICO
APRIL 15, 2016



SHEET: 3-4

MADRON SURVEYING, INC.

301 SOUTH CANAL
(575) 234-3341

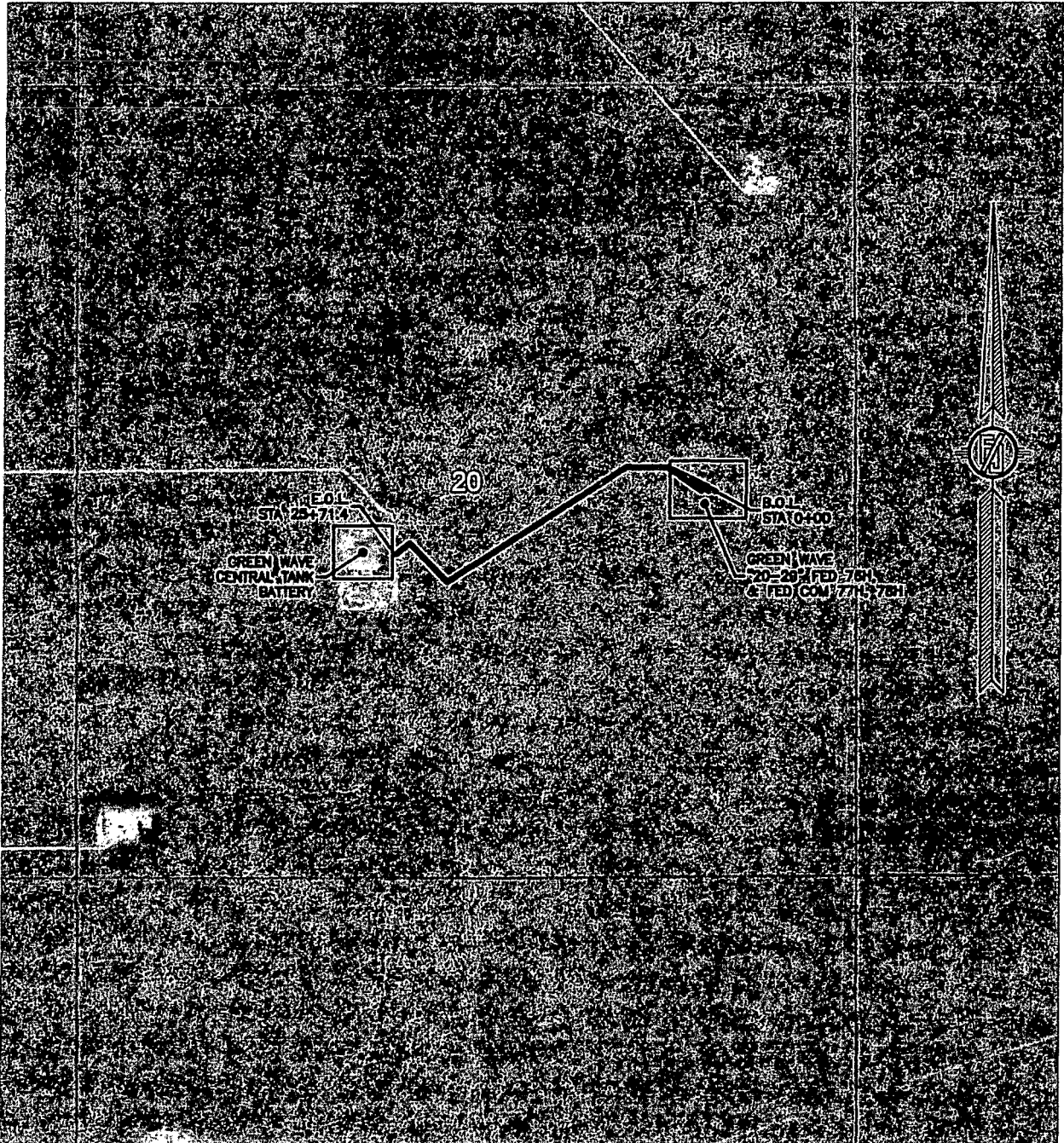
CARLSBAD, NEW MEXICO

SURVEY NO. 4101B

FLOWLINE PLAT

THREE-6" POLY FLEX PRODUCTION LINES AND THREE-6" GAS LIFT LINES BURIED IN THE SAME
DITCH FROM THE GREEN WAVE 20-29 FED 76H AND GREEN WAVE 20-29 FED COM 77H AND GREEN
WAVE 20-29 FED COM 78H TO THE GREEN WAVE CENTRAL TANK BATTERY

DEVON ENERGY PRODUCTION COMPANY, L.P.
CENTERLINE SURVEY OF A PIPELINE CROSSING
SECTION 20, TOWNSHIP 26 SOUTH, RANGE 34 EAST, N.M.P.M.
LEA COUNTY, STATE OF NEW MEXICO
APRIL 15, 2016



SHEET: 4-4

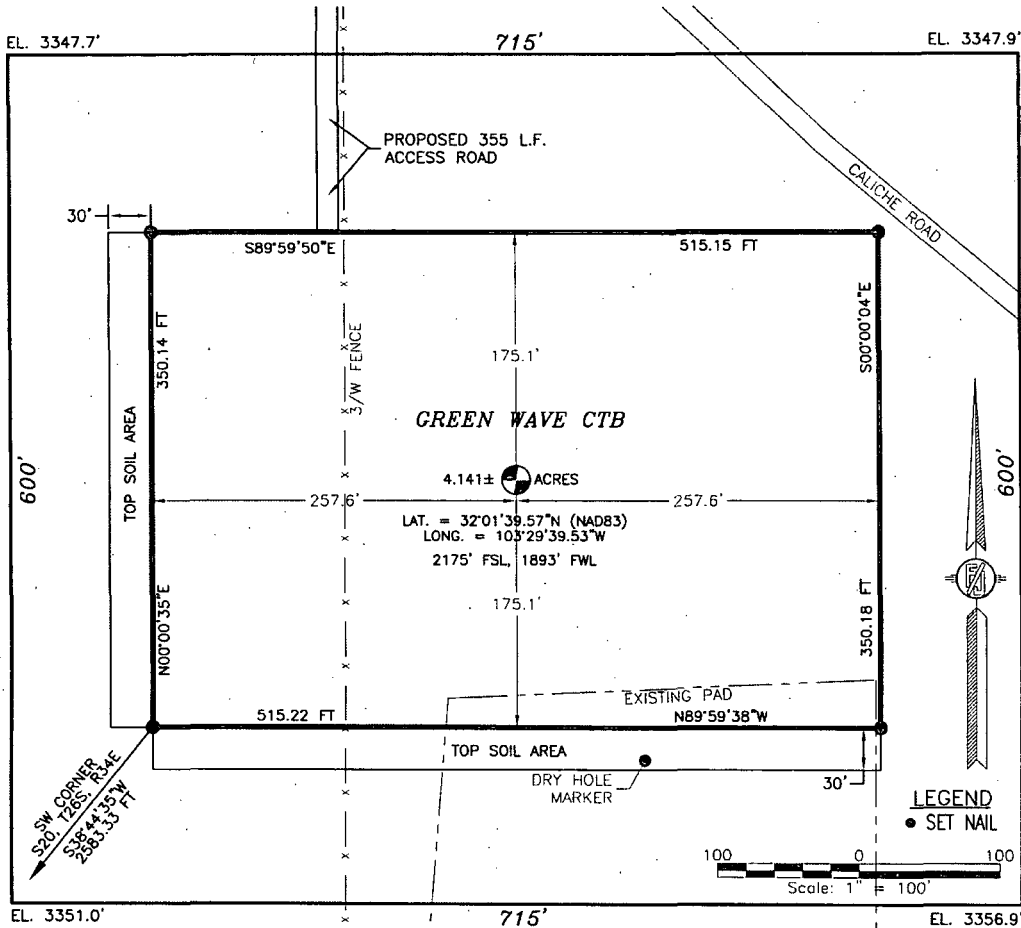
MADRON SURVEYING, INC. 301 SOUTH CANAL (575) 234-3341 CARLSBAD, NEW MEXICO

SURVEY NO. 4101B

GREEN WAVE CTB

DEVON ENERGY PRODUCTION COMPANY, L.P.
IN THE N/2 NE/4 SW/4 OF
SECTION 20, TOWNSHIP 26 SOUTH, RANGE 34 EAST, N.M.P.M.
LEA COUNTY, STATE OF NEW MEXICO

SEPTEMBER 18, 2015



DESCRIPTION

A CERTAIN PIECE OR PARCEL OF LAND AND REAL ESTATE LYING IN BUREAU OF LAND MANAGEMENT LAND IN THE N/2 NE/4 SW/4 OF SECTION 20, TOWNSHIP 26 SOUTH, RANGE 34 EAST, N.M.P.M., LEA COUNTY, NEW MEXICO.

BEGINNING AT THE SOUTHWEST CORNER OF THE PARCEL, WHENCE THE SOUTHWEST CORNER OF SECTION 20, TOWNSHIP 26 SOUTH, RANGE 34 EAST, N.M.P.M. BEARS S38°44'35\"W, A DISTANCE OF 2583.33 FEET; THENCE N00°00'35\"E A DISTANCE OF 350.14 FEET TO THE NORTHWEST CORNER OF THE PARCEL; THENCE S89°59'50\"E A DISTANCE OF 515.15 FEET TO THE NORTHEAST CORNER OF THE PARCEL; THENCE S00°00'04\"E A DISTANCE OF 350.18 FEET TO THE SOUTHEAST CORNER OF THE PARCEL; THENCE N89°59'38\"W A DISTANCE OF 515.22 FEET TO THE SOUTHWEST CORNER OF THE PARCEL, THE POINT OF BEGINNING; CONTAINING 4.141 ACRES MORE OR LESS.

GENERAL NOTES

1.) THE INTENT OF THIS SURVEY IS TO ACQUIRE A BUSINESS LEASE FOR THE PURPOSE OF BUILDING A TANK BATTERY

2.) BASIS OF BEARING IS NEW MEXICO STATE PLANE EAST ZONE MODIFIED TO THE SURFACE (NAD83)

DRIVING DIRECTIONS: FROM INTERSECTION OF STATE HWY #128 AND COUNTY ROAD #2 GO SOUTH AND WEST 12.2 MILES, TURN SOUTH AT LEASE ROAD GO 0.6 MILE, TURN EAST GO 1.9 MILES, TURN SOUTH AT LEASE ROAD GO 2.5 MILES, TURN EAST AT LEASE ROAD GO 0.5 MILE TO GREEN WAVE CTB.

SHEET: 1-3

SURVEYOR CERTIFICATE

I, FILMON F. JARAMILLO, A NEW MEXICO PROFESSIONAL SURVEYOR NO. 12797, HEREBY CERTIFY THAT I HAVE CONDUCTED AND AM RESPONSIBLE FOR THIS SURVEY, THAT THIS SURVEY IS TRUE AND CORRECT TO THE BEST OF MY KNOWLEDGE AND BELIEF, AND THAT THIS SURVEY AND PLAT MEET THE MINIMUM STANDARDS FOR LAND SURVEYING IN THE STATE OF NEW MEXICO.

IN WITNESS WHEREOF, THIS CERTIFICATE IS EXECUTED AT CARLSBAD,

NEW MEXICO, THIS 21 DAY OF SEPTEMBER 2015

MADRON SURVEYING, INC.
301 SOUTH CANAL
CARLSBAD, NEW MEXICO 88220
Phone (575) 234-3341

FILMON F. JARAMILLO RES. 12797

SURVEY NO. 4088A

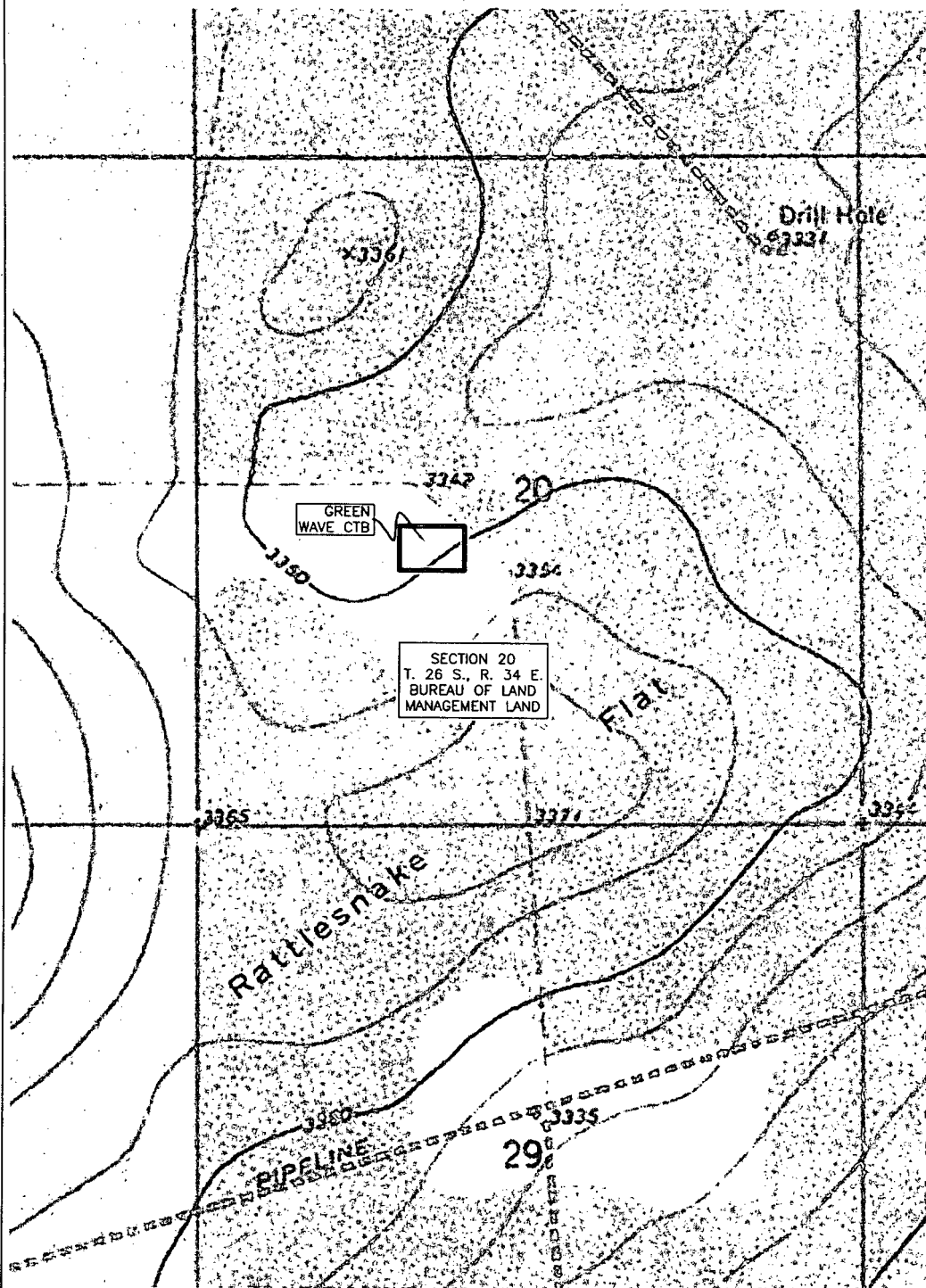
MADRON SURVEYING, INC. CARLSBAD, NEW MEXICO

GREEN WAVE CTB

DEVON ENERGY PRODUCTION COMPANY, L.P.
IN THE N/2 NE/4 SW/4 OF
SECTION 20, TOWNSHIP 26 SOUTH, RANGE 34 EAST, N.M.P.M.
LEA COUNTY, STATE OF NEW MEXICO

SEPTEMBER 18, 2015

QUAD MAP



SHEET: 2-3

MADRON SURVEYING, INC.

301 SOUTH CANAL
(575) 234-3341

CARLSBAD, NEW MEXICO

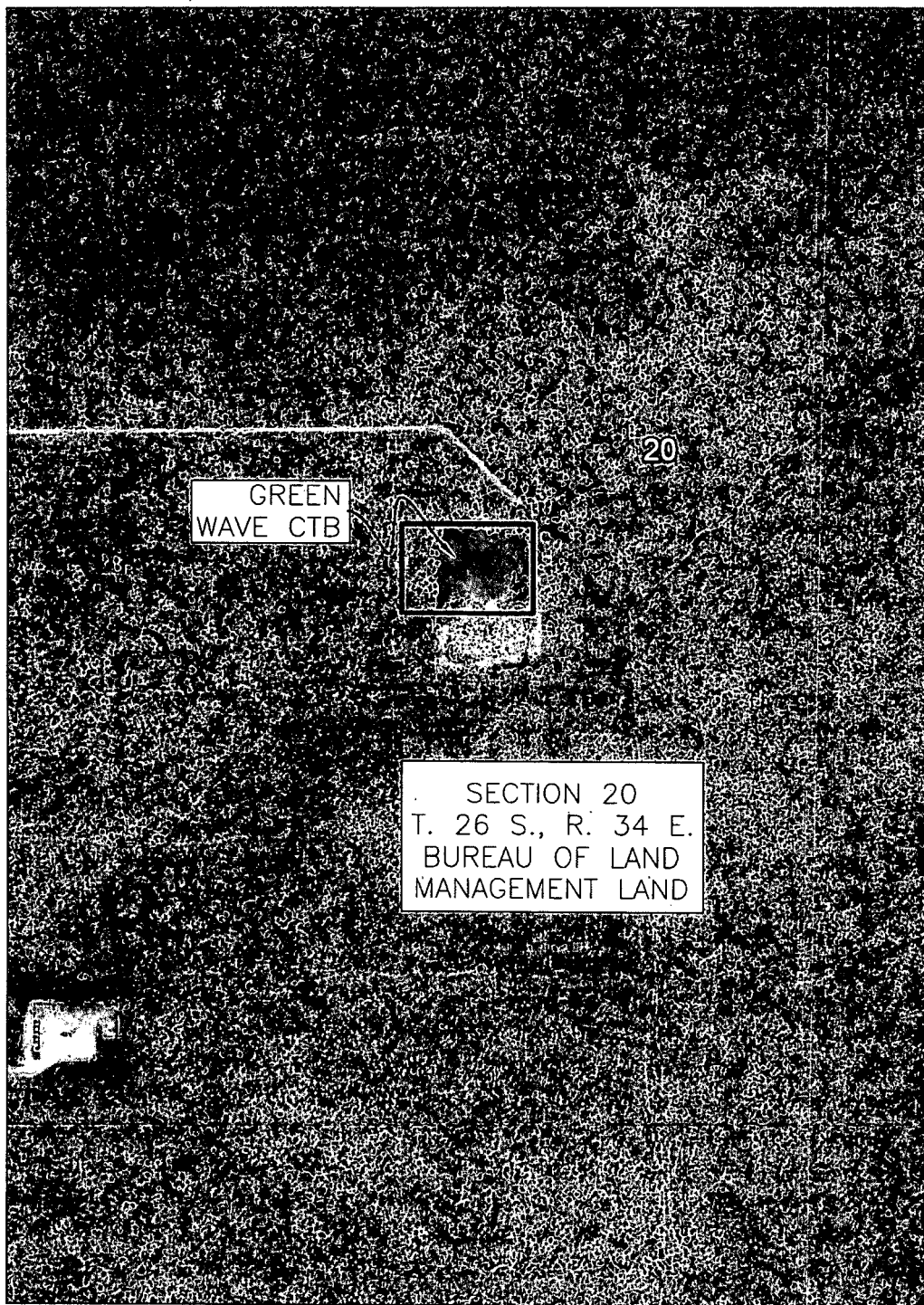
SURVEY NO. 4088A

GREEN WAVE CTB

DEVON ENERGY PRODUCTION COMPANY, L.P.
IN THE N/2 NE/4 SW/4 OF
SECTION 20, TOWNSHIP 26 SOUTH, RANGE 34 EAST, N.M.P.M.
LEA COUNTY, STATE OF NEW MEXICO

SEPTEMBER 18, 2015

AERIAL PHOTO



GREEN
WAVE CTB

20

SECTION 20
T. 26 S., R. 34 E.
BUREAU OF LAND
MANAGEMENT LAND

SHEET: 3-3

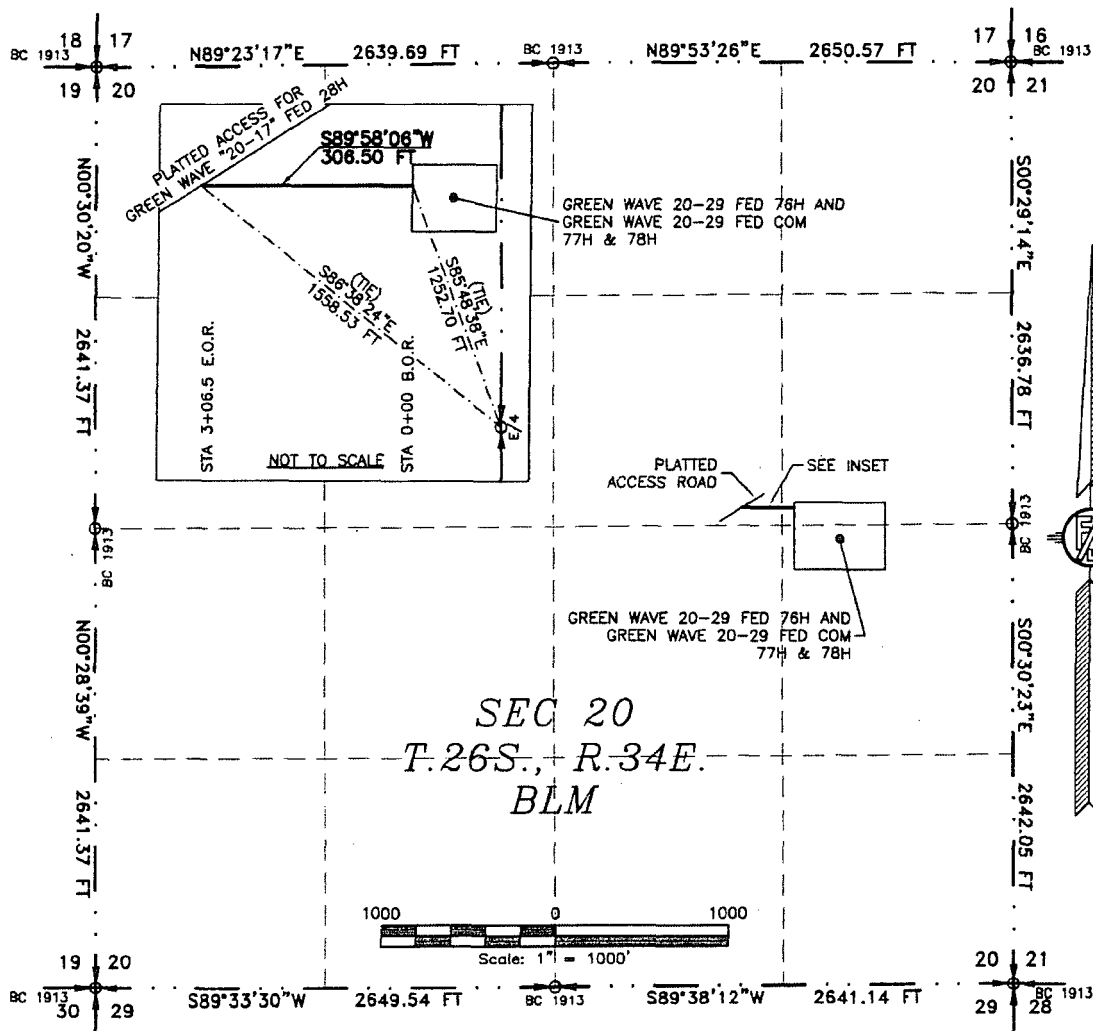
MADRON SURVEYING, INC. 301 SOUTH CANAL (575) 234-3341 CARLSBAD, NEW MEXICO

SURVEY NO. 4088A

ACCESS ROAD PLAT

PROPOSED ACCESS ROAD FROM GREEN WAVE 20-29 FED 76H TO
GREEN WAVE 20-29 FED COM 77H & 78H

DEVON ENERGY PRODUCTION COMPANY, L.P.
CENTERLINE SURVEY OF AN ACCESS ROAD CROSSING
SECTION 20, TOWNSHIP 26 SOUTH, RANGE 34 EAST, N.M.P.M.
LEA COUNTY, STATE OF NEW MEXICO
APRIL 23, 2015



SEE NEXT SHEET (2-4) FOR DESCRIPTION

SURVEYOR CERTIFICATE

I, FILMON F. JARAMILLO, A NEW MEXICO PROFESSIONAL SURVEYOR NO. 12797, HEREBY CERTIFY THAT I HAVE CONDUCTED AND AM RESPONSIBLE FOR THIS SURVEY, THAT THIS SURVEY IS TRUE AND CORRECT TO THE BEST OF MY KNOWLEDGE AND BELIEF, AND THAT THIS SURVEY AND PLAT MEET THE MINIMUM STANDARDS FOR LAND SURVEYING IN THE STATE OF NEW MEXICO.

IN WITNESS WHEREOF, THIS CERTIFICATE IS EXECUTED AT CARLSBAD, NEW MEXICO, THIS 12th DAY OF MAY 2015

[Signature]
FILMON F. JARAMILLO, PLS. 12797

MADRON SURVEYING, INC.
301 SOUTH CANAL
CARLSBAD, NEW MEXICO 88220
Phone (575) 234-3341

GENERAL NOTES

- 1.) THE INTENT OF THIS ROUTE SURVEY IS TO ACQUIRE AN EASEMENT.
- 2.) BASIS OF BEARING IS NMSP EAST MODIFIED TO SURFACE COORDINATES.

SHEET: 1-4

MADRON SURVEYING, INC. 301 SOUTH CANAL CARLSBAD, NEW MEXICO

SURVEY NO. 3954

ACCESS ROAD PLAT

PROPOSED ACCESS ROAD FROM GREEN WAVE 20-29 FED 76H TO
GREEN WAVE 20-29 FED COM 77H & 78H

DEVON ENERGY PRODUCTION COMPANY, L.P.
CENTERLINE SURVEY OF AN ACCESS ROAD CROSSING
SECTION 20, TOWNSHIP 26 SOUTH, RANGE 34 EAST, N.M.P.M.
LEA COUNTY, STATE OF NEW MEXICO
APRIL 23, 2015

DESCRIPTION

A STRIP OF LAND 20 FEET WIDE CROSSING BUREAU OF LAND MANAGEMENT LAND IN SECTION 20, TOWNSHIP 26 SOUTH, RANGE 34 EAST, N.M.P.M., LEA COUNTY, STATE OF NEW MEXICO AND BEING 10 FEET EACH SIDE OF THE FOLLOWING DESCRIBED CENTERLINE SURVEY:

BEGINNING AT A POINT WITHIN THE SE/4 NE/4 OF SAID SECTION 20, TOWNSHIP 26 SOUTH, RANGE 34 EAST, N.M.P.M., WHENCE THE EAST QUARTER CORNER OF SAID SECTION 20, TOWNSHIP 26 SOUTH, RANGE 34 EAST, N.M.P.M. BEARS S85°48'38"E, A DISTANCE OF 1252.70 FEET;
THENCE S89°58'06"W A DISTANCE OF 306.50 FEET THE TERMINUS OF THIS CENTERLINE SURVEY, WHENCE THE EAST QUARTER CORNER OF SAID SECTION 20, TOWNSHIP 26 SOUTH, RANGE 34 EAST, N.M.P.M. BEARS S86°38'24"E, A DISTANCE OF 1558.53 FEET;

SAID STRIP OF LAND BEING 306.50 FEET OR 18.58 RODS IN LENGTH, CONTAINING 0.141 ACRES MORE OR LESS AND BEING ALLOCATED BY FORTIES AS FOLLOWS:

SE/4 NE/4	74.05 L.F.	4.49 RODS	0.034 ACRES
SW/4 NE/4	232.45 L.F.	14.09 RODS	0.107 ACRES

SURVEYOR CERTIFICATE

I, FILMON F. JARAMILLO, A NEW MEXICO PROFESSIONAL SURVEYOR NO. 12797, HEREBY CERTIFY THAT I HAVE CONDUCTED AND AM RESPONSIBLE FOR THIS SURVEY, THAT THIS SURVEY IS TRUE AND CORRECT TO THE BEST OF MY KNOWLEDGE AND BELIEF, AND THAT THIS SURVEY AND PLAT MEET THE MINIMUM STANDARDS FOR LAND SURVEYING IN THE STATE OF NEW MEXICO.

IN WITNESS WHEREOF, THIS CERTIFICATE IS EXECUTED AT CARLSBAD,
NEW MEXICO, THIS 27 DAY OF MAY 2015

GENERAL NOTES

- 1.) THE INTENT OF THIS ROUTE SURVEY IS TO ACQUIRE AN EASEMENT.
- 2.) BASIS OF BEARING IS NMSP EAST MODIFIED TO SURFACE COORDINATES.

SHEET: 2-4

MADRON SURVEYING, INC.

FILMON F. JARAMILLO, PLS 12797
301 SOUTH CANAL
CARLSBAD, NEW MEXICO 88220
Phone (575) 234-3341

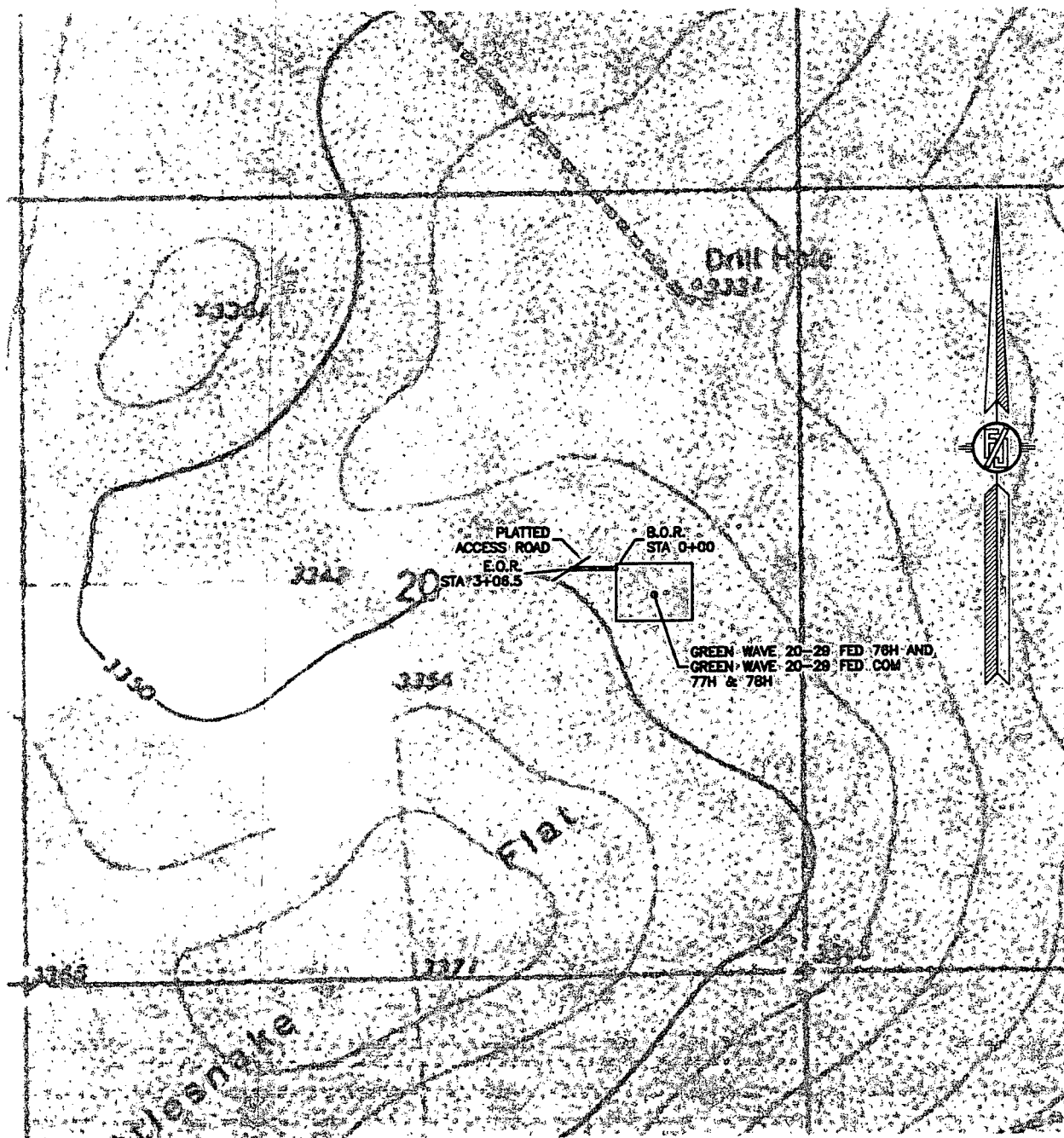
SURVEY NO. 3954

CARLSBAD, NEW MEXICO

ACCESS ROAD PLAT

PROPOSED ACCESS ROAD FROM GREEN WAVE 20-29 FED 76H TO
GREEN WAVE 20-29 FED COM 77H & 78H

DEVON ENERGY PRODUCTION COMPANY, L.P.
CENTERLINE SURVEY OF AN ACCESS ROAD CROSSING
SECTION 20, TOWNSHIP 26 SOUTH, RANGE 34 EAST, N.M.P.M.
LEA COUNTY, STATE OF NEW MEXICO
APRIL 23, 2015



SHEET: 3-4

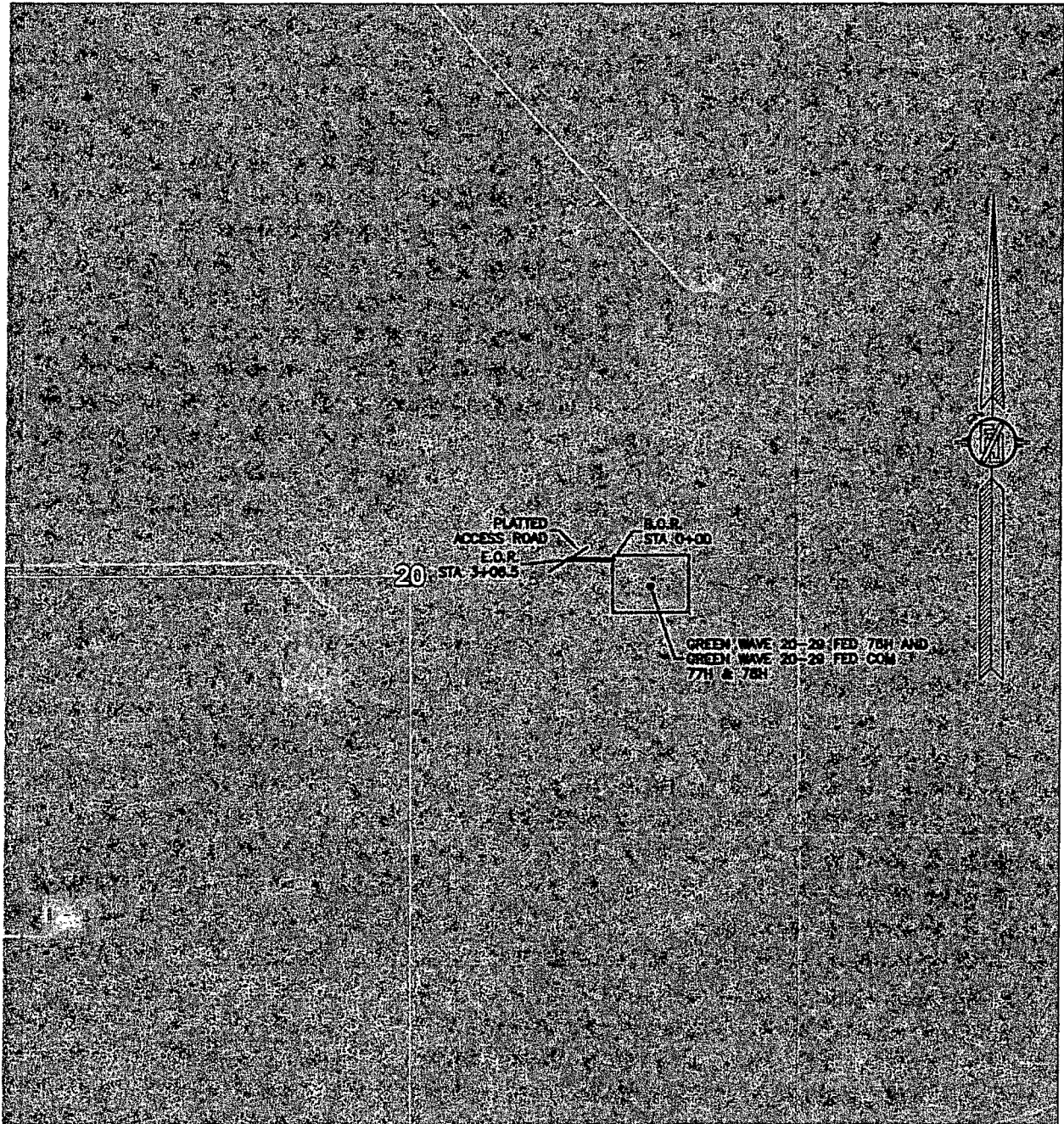
MADRON SURVEYING, INC. 301 SOUTH CANAL (575) 234-3341

SURVEY NO. 3954
CARLSBAD, NEW MEXICO

ACCESS ROAD PLAT

PROPOSED ACCESS ROAD FROM GREEN WAVE 20-29 FED 76H TO
GREEN WAVE 20-29 FED COM 77H & 78H

DEVON ENERGY PRODUCTION COMPANY, L.P.
CENTERLINE SURVEY OF AN ACCESS ROAD CROSSING
SECTION 20, TOWNSHIP 26 SOUTH, RANGE 34 EAST, N.M.P.M.
LEA COUNTY, STATE OF NEW MEXICO
APRIL 23, 2015



SHEET: 4-4

MADRON SURVEYING, INC. 301 SOUTH CANAL (575) 234-3341 CARLSBAD, NEW MEXICO

SURVEY NO. 3954