

District I  
1625 N. French Dr., Hobbs, NM 88240  
Phone: (575) 393-6161 Fax: (575) 393-0720  
District II  
811 S. First St., Artesia, NM 88210  
Phone: (505) 748-1283 Fax: (575) 748-9720  
District III  
1000 Rio Brazos Road, Aztec, NM 87410  
Phone: (505) 334-6178 Fax: (505) 334-6170  
District IV  
1220 S. St. Francis Dr., Santa Fe, NM 87505  
Phone: (505) 476-3460 Fax: (505) 476-3462

State of New Mexico  
Energy, Minerals & Natural Resources Department  
OIL CONSERVATION DIVISION  
1220 South St. Francis Dr.  
Santa Fe, NM 87505

Form C-102

Revised August 1, 2011

Submit one copy to appropriate

District Office

APR 29 2016

RECEIVED

☐ AMENDED REPORT

WELL LOCATION AND ACREAGE DEDICATION PLAT

<sup>1</sup> API Number 30-025-43205	<sup>2</sup> Pool Code 97964	<sup>3</sup> Pool Name WC-025 G07 5243225C; Lower Bone Spring
<sup>4</sup> Property Code 39911	<sup>5</sup> Property Name BELL LAKE 24 FED	<sup>6</sup> Well Number 9H
<sup>7</sup> OGRID No. 6137	<sup>8</sup> Operator Name DEVON ENERGY PRODUCTION COMPANY, L.P.	<sup>9</sup> Elevation 3581.1

\* Surface Location

UL or lot no.	Section	Township	Range	Lot Idn	Feet from the	North/South line	Feet from the	East/West line	County
M	24	24 S	32 E		330	SOUTH	200	WEST	LEA

\*\* Bottom Hole Location If Different From Surface

UL or lot no.	Section	Township	Range	Lot Idn	Feet from the	North/South line	Feet from the	East/West line	County
D	24	24 S	32 E		330	NORTH	350	WEST	LEA

<sup>12</sup> Dedicated Acres	<sup>13</sup> Joint or Infill	<sup>14</sup> Consolidation Code	<sup>15</sup> Order No.
160.00			

No allowable will be assigned to this completion until all interests have been consolidated or a non-standard unit has been approved by the division.

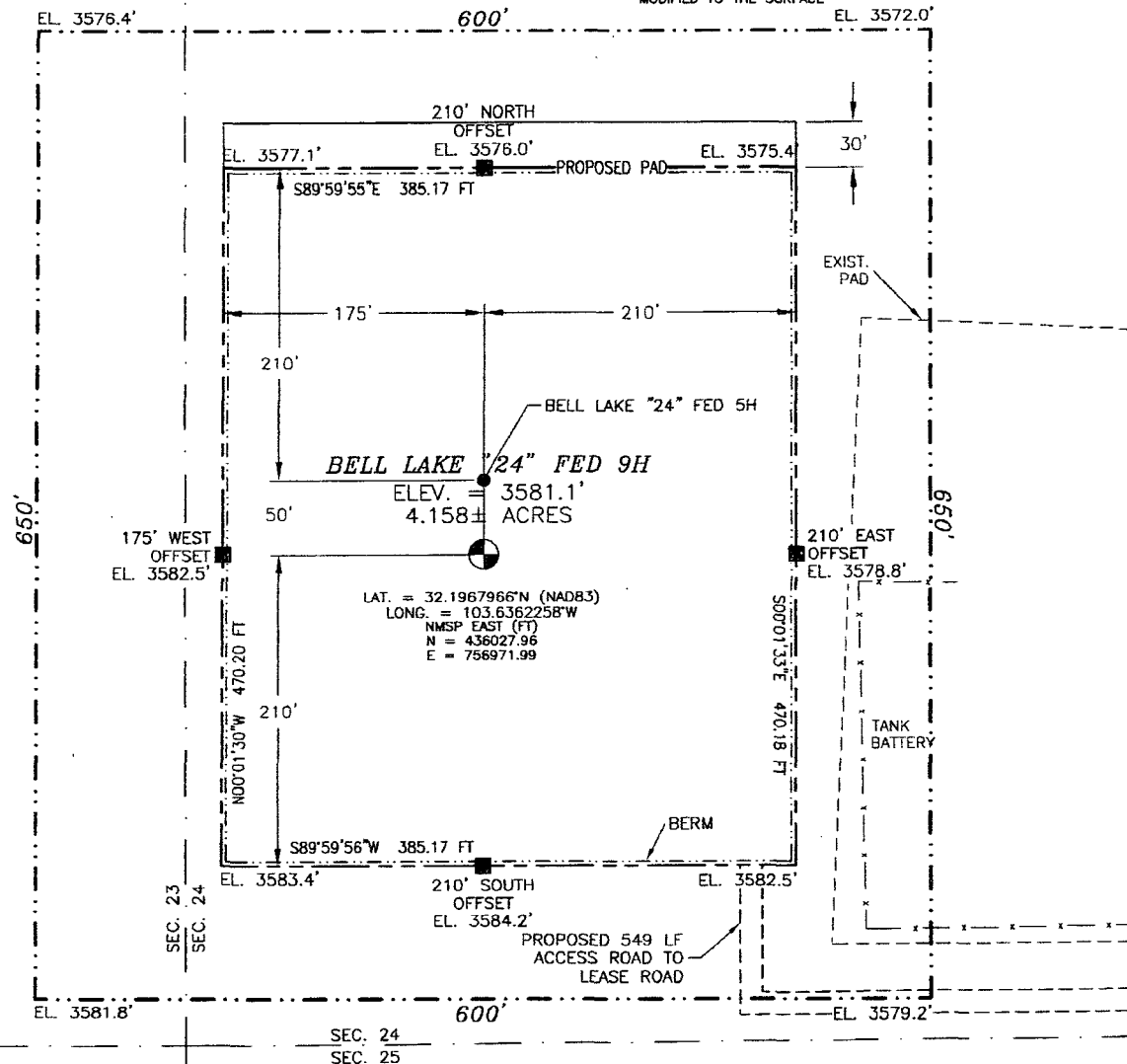
<p>N89°48'08"E 2634.45 FT</p> <p>NW CORNER SEC. 24 LAT. = 32.2104758°N LONG. = 103.6368416°W NMSP EAST (FT) N = 441003.09 E = 756749.26</p> <p>350'</p> <p>BOTTOM OF HOLE</p> <p>BOTTOM OF HOLE LAT. = 32.2095660°N LONG. = 103.6357123°W NMSP EAST (FT) N = 440674.37 E = 757100.69</p> <p>DNF</p> <p>BELL LAKE "24" FED 9H ELEV. = 3581.1' LAT. = 32.1967966°N (NAD83) LONG. = 103.6362258°W NMSP EAST (FT) N = 436027.96 E = 756971.99</p> <p>DNF</p> <p>SURFACE LOCATION</p> <p>SW CORNER SEC. 24 LAT. = 32.1958887°N LONG. = 103.6368744°W NMSP EAST (FT) N = 435696.85 E = 756773.81</p> <p>S Q CORNER SEC. 24 LAT. = 32.1959025°N LONG. = 103.6283518°W NMSP EAST (FT) N = 435718.54 E = 759409.83</p> <p>SE CORNER SEC. 24 LAT. = 32.1959128°N LONG. = 103.6198272°W NMSP EAST (FT) N = 435739.69 E = 762046.77</p> <p>200'</p> <p>S89°31'04"W 2636.98 FT</p> <p>S89°32'26"W 2637.60 FT</p>		<p>N89°48'08"E 2634.45 FT</p> <p>NE CORNER SEC. 24 LAT. = 32.2104308°N LONG. = 103.6198102°W NMSP EAST (FT) N = 441021.27 E = 762016.99</p> <p>500'19'40"E 2641.62 FT</p> <p>500'19'06"E 2641.20 FT</p> <p>NOTE: LATITUDE AND LONGITUDE COORDINATES ARE SHOWN USING THE NORTH AMERICAN DATUM OF 1983 (NAD83). LISTED NEW MEXICO STATE PLANE EAST COORDINATES ARE GRID (NAD83). BASIS OF BEARING AND DISTANCES USED ARE NEW MEXICO STATE PLANE EAST COORDINATES MODIFIED TO THE SURFACE.</p> <p>F. Q CORNER SEC. 24 LAT. = 32.2031712°N LONG. = 103.6198180°W NMSP EAST (FT) N = 438380.27 E = 762032.10</p>
<p><b>17 OPERATOR CERTIFICATION</b> I hereby certify that the information contained herein is true and complete to the best of my knowledge and belief, and that this organization either owns a working interest or unleased mineral interest in the land including the proposed bottom hole location or has a right to drill this well at this location pursuant to a contract with an owner of such a mineral or working interest, or to a voluntary pooling agreement or a compulsory pooling order heretofore entered by the division.</p> <p><i>Linda Good</i> 9/17/2015 Signature Date</p> <p>Linda Good Printed Name</p> <p>linda.good@dv.com E-mail Address</p>		
<p><b>18 SURVEYOR CERTIFICATION</b> I hereby certify that the well location shown on this plat was plotted from field notes of actual surveys made by me or under my supervision, and that the same is true and correct to the best of my belief.</p> <p>AUGUST 24, 2015 Date of Survey</p> <p><i>[Signature]</i> Signature and Seal of Professional Surveyor</p> <p>Certificate Number: ELLIMON P. JARAMILLO, PLS 12797 SURVEY NO. 3757B</p>		

MAY 03 2016

SECTION 24, TOWNSHIP 24 SOUTH, RANGE 32 EAST, N.M.P.M.  
LEA COUNTY, STATE OF NEW MEXICO

SITE MAP

NOTE: LATITUDE AND LONGITUDE COORDINATES ARE SHOWN USING THE NORTH AMERICAN DATUM OF 1983 (NAD83). LISTED NEW MEXICO STATE PLANE EAST COORDINATES ARE GRID (NAD83). BASIS OF BEARING AND DISTANCES USED ARE NEW MEXICO STATE PLANE EAST COORDINATES MODIFIED TO THE SURFACE



0 12 60 120 240

SCALE 1" = 120'

DIRECTIONS TO LOCATION

FROM THE INTERSECTION OF STATE HIGHWAY 128 AND CR 1 (ORLA HIGHWAY) GO EAST APPROX. 3.0 MILES ON STATE HIGHWAY 128 TO A LEASE ROAD ON RIGHT (SOUTH), TURN SOUTH GO 1.1 MILES TO A CATTLE GUARD ON RIGHT (WEST), TURN WEST ON LEASE ROAD GO WEST APPROX. 0.8 MILE, ROAD TURNS RIGHT (NORTH), GO NORTH APPROX. 543', THEN TURN LEFT (WEST) GO WEST APPROX. 456', TURN RIGHT (NORTH) GO NORTH APPROX. 93' (549' TOTAL) TO THE SOUTHEAST PAD CORNER FOR THIS LOCATION.

DEVON ENERGY PRODUCTION COMPANY, L.P.

**BELL LAKE "24" FED 9H**

LOCATED 330 FT. FROM THE SOUTH LINE  
AND 200 FT. FROM THE WEST LINE OF

SECTION 24, TOWNSHIP 24 SOUTH,  
RANGE 32 EAST, N.M.P.M.

LEA COUNTY, STATE OF NEW MEXICO

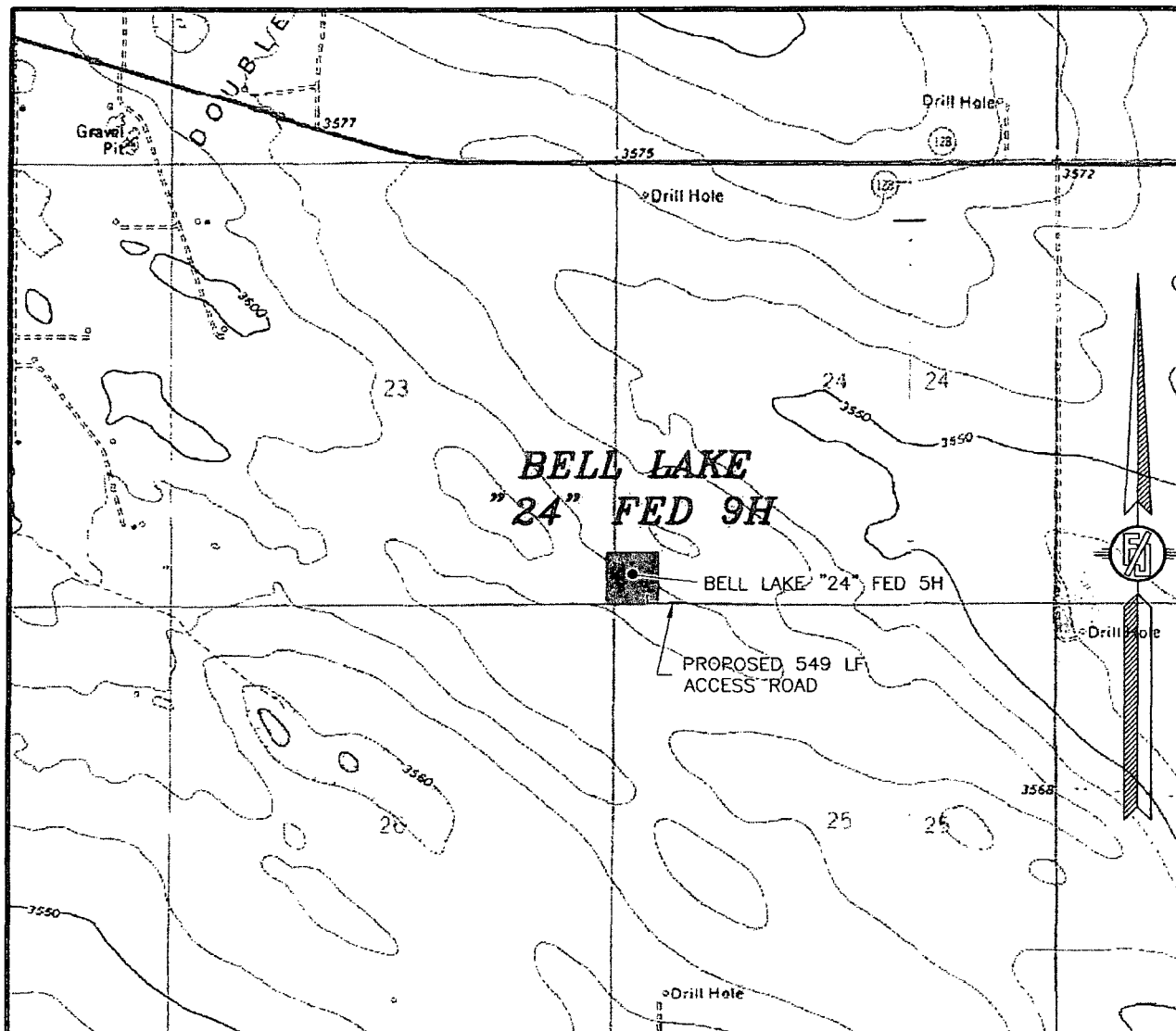
AUGUST 24, 2015

SURVEY NO. 3757B

MADRON SURVEYING, INC. 301 SOUTH CANAL (575) 234-3341

CARLSBAD, NEW MEXICO

SECTION 24, TOWNSHIP 24 SOUTH, RANGE 32 EAST, N.M.P.M.  
LEA COUNTY, STATE OF NEW MEXICO  
LOCATION VERIFICATION MAP



USGS QUAD MAP:  
PADUCA BREAKS NW

NOT TO SCALE

DEVON ENERGY PRODUCTION COMPANY, L.P.

**BELL LAKE "24" FED 9H**

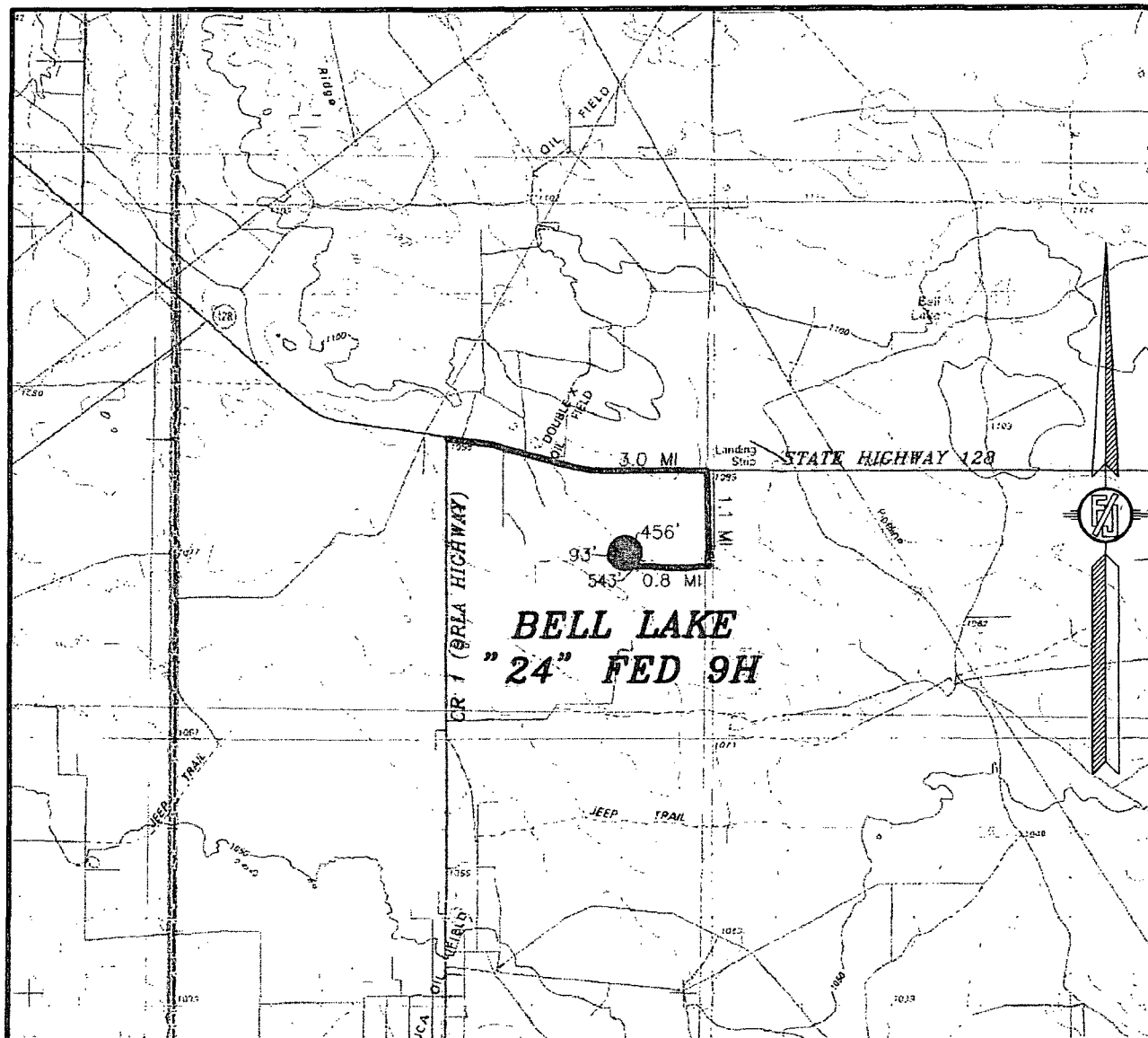
LOCATED 330 FT. FROM THE SOUTH LINE  
AND 200 FT. FROM THE WEST LINE OF  
SECTION 24, TOWNSHIP 24 SOUTH,  
RANGE 32 EAST, N.M.P.M.  
LEA COUNTY, STATE OF NEW MEXICO

AUGUST 24, 2015

SURVEY NO. 3757B

MADRON SURVEYING, INC. 301 SOUTH CANAL CARLSBAD, NEW MEXICO  
(575) 234-3341

SECTION 24, TOWNSHIP 24 SOUTH, RANGE 32 EAST, N.M.P.M.  
LEA COUNTY, STATE OF NEW MEXICO  
VICINITY MAP



DISTANCES IN MILES

NOT TO SCALE

DEVON ENERGY PRODUCTION COMPANY, L.P.

**BELL LAKE "24" FED 9H**

LOCATED 330 FT. FROM THE SOUTH LINE  
AND 200 FT. FROM THE WEST LINE OF  
SECTION 24, TOWNSHIP 24 SOUTH,  
RANGE 32 EAST, N.M.P.M.  
LEA COUNTY, STATE OF NEW MEXICO

**DIRECTIONS TO LOCATION**

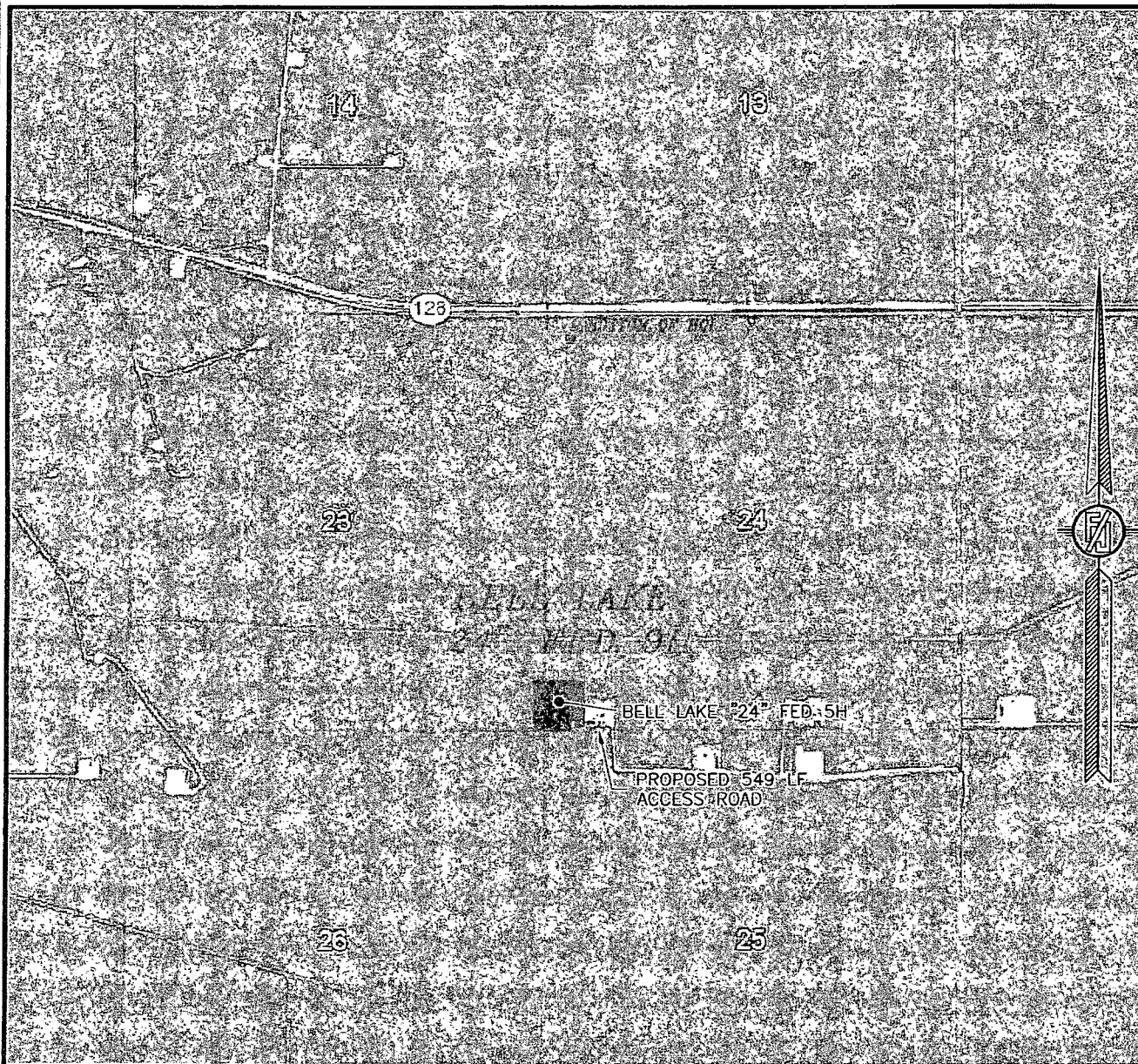
FROM THE INTERSECTION OF STATE HIGHWAY 128 AND CR 1 (ORLA HIGHWAY) GO EAST APPROX. 3.0 MILES ON STATE HIGHWAY 128 TO A LEASE ROAD ON RIGHT (SOUTH). TURN SOUTH GO 1.1 MILES TO A CATTLE GUARD ON RIGHT (WEST), TURN WEST ON LEASE ROAD GO WEST APPROX. 0.8 MILE, ROAD TURNS RIGHT (NORTH), GO NORTH APPROX. 543', THEN TURN LEFT (WEST) GO WEST APPROX. 456', TURN RIGHT (NORTH) GO NORTH APPROX. 93' (549' TOTAL) TO THE SOUTHEAST PAD CORNER FOR THIS LOCATION.

AUGUST 24, 2015

SURVEY NO. 3757B

MADRON SURVEYING, INC. 301 SOUTH CANAL CARLSBAD, NEW MEXICO  
(575) 234-3341

SECTION 24, TOWNSHIP 24 SOUTH, RANGE 32 EAST, N.M.P.M.  
LEA COUNTY, STATE OF NEW MEXICO  
**AERIAL PHOTO**



NOT TO SCALE  
AERIAL PHOTO:  
GOOGLE EARTH  
FEBRUARY 2014

DEVON ENERGY PRODUCTION COMPANY, L.P.

**BELL LAKE "24" FED 9H**

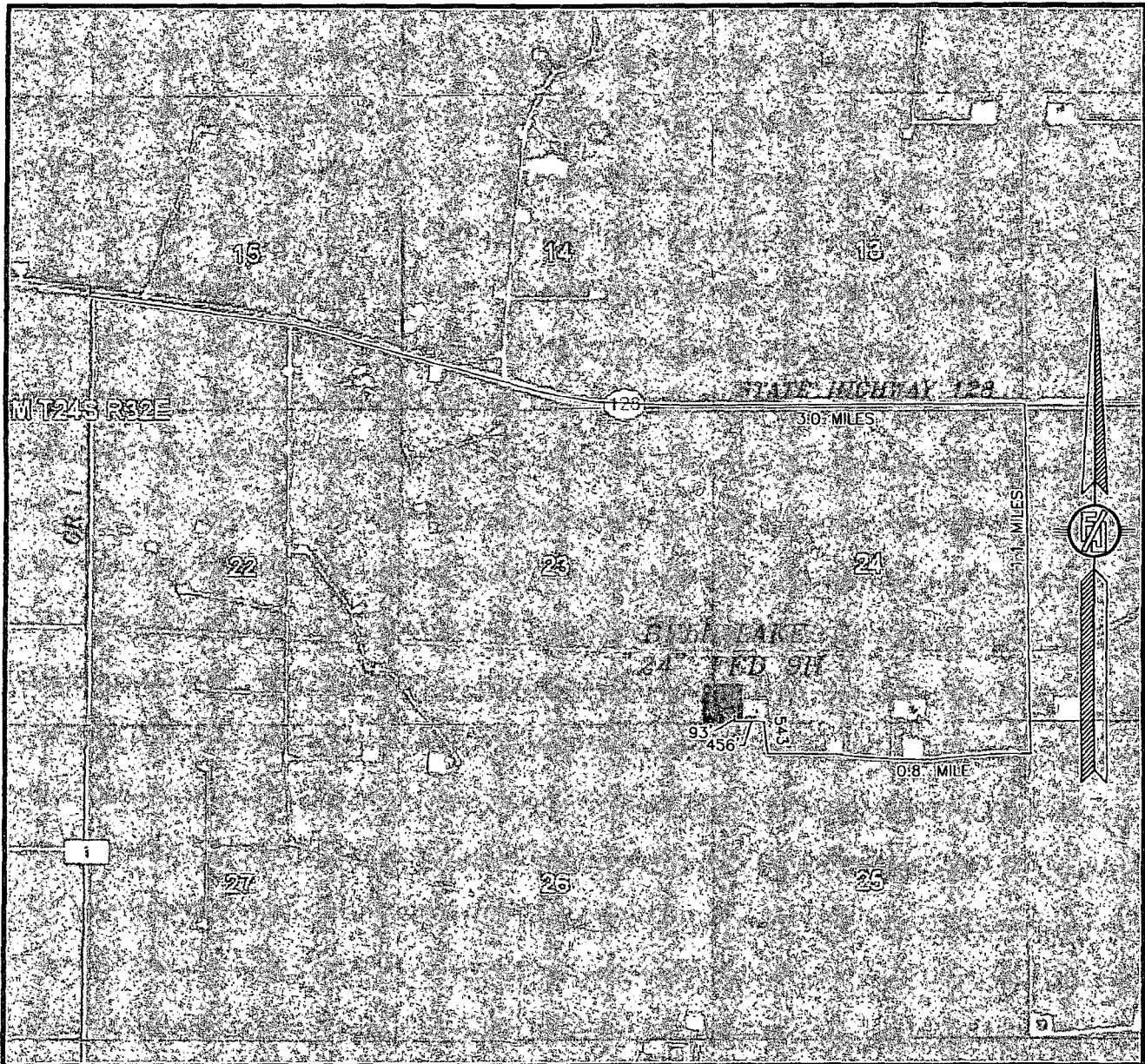
LOCATED 330 FT. FROM THE SOUTH LINE  
AND 200 FT. FROM THE WEST LINE OF  
SECTION 24, TOWNSHIP 24 SOUTH,  
RANGE 32 EAST, N.M.P.M.  
LEA COUNTY, STATE OF NEW MEXICO

AUGUST 24, 2015

SURVEY NO. 3757B

MADRON SURVEYING, INC. 301 SOUTH CANAL CARLSBAD, NEW MEXICO  
(575) 234-3341

SECTION 24, TOWNSHIP 24 SOUTH, RANGE 32 EAST, N.M.P.M.  
LEA COUNTY, STATE OF NEW MEXICO  
ACCESS AERIAL ROUTE MAP



NOT TO SCALE  
AERIAL PHOTO:  
GOOGLE EARTH  
FEBRUARY 2014

DEVON ENERGY PRODUCTION COMPANY, L.P.

**BELL LAKE "24" FED 9H**

LOCATED 330 FT. FROM THE SOUTH LINE  
AND 200 FT. FROM THE WEST LINE OF  
SECTION 24, TOWNSHIP 24 SOUTH,  
RANGE 32 EAST, N.M.P.M.  
LEA COUNTY, STATE OF NEW MEXICO

AUGUST 24, 2015

SURVEY NO. 3757B

MADRON SURVEYING, INC. 301 SOUTH CANAL CARLSBAD, NEW MEXICO  
(575) 234-3341



# One Mile Radius Map

Estimated distances to nearest wellbores:

\*From SHL: Bell Lake 24 Federal 1H 485 ft E  
Treasure Island Federal 1H 575 ft W  
Bell lake 24 Federal 1H 340 ft E  
\*From BHL: Federal Bondurant 1 10 ft N

24S 32E  
22

devon

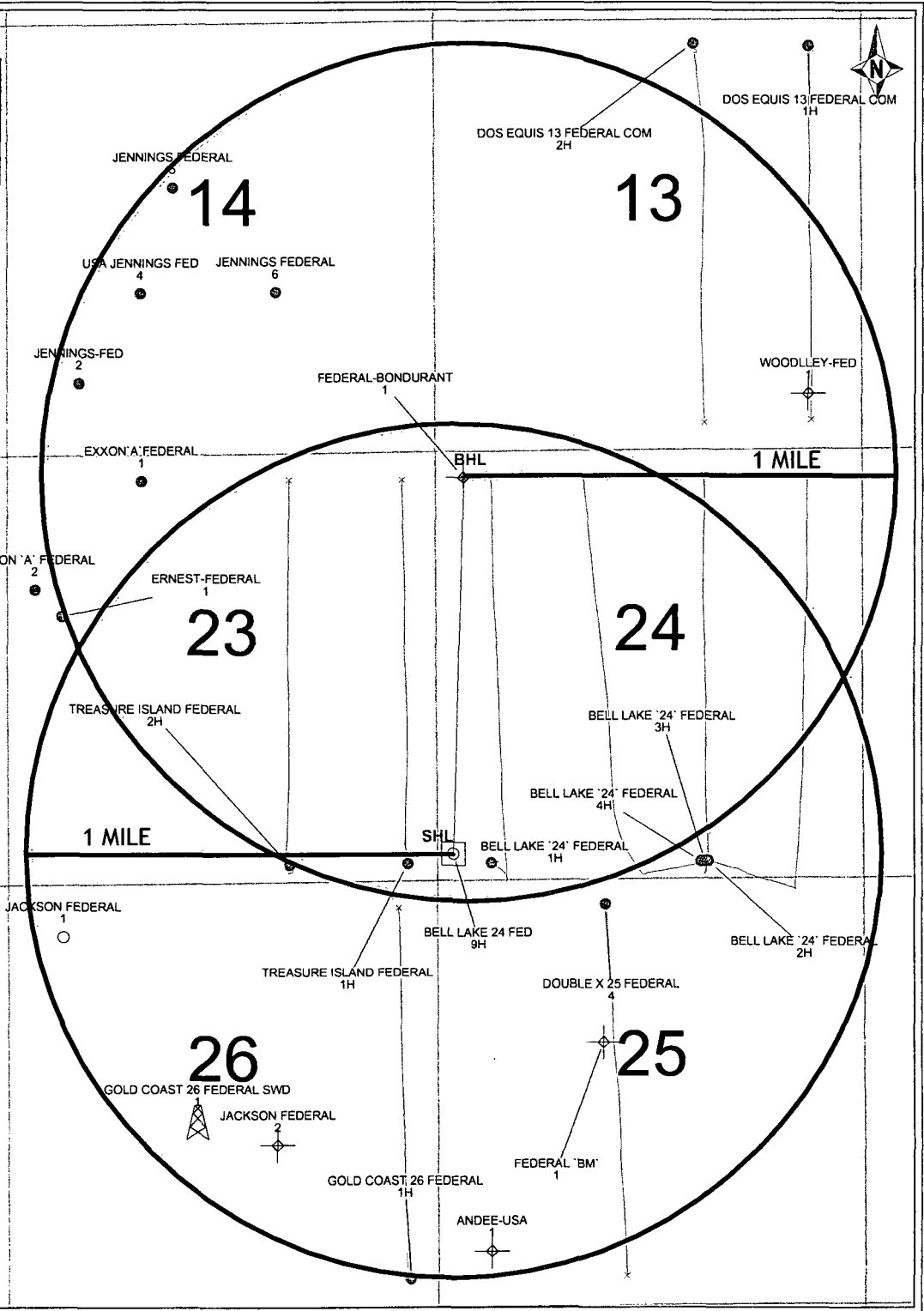
Bell Lake 25 Fed 9H

1 Mile Radius Map

0 1,921  
FEET

WELL SYMBOLS  
DRY AND ABANDONED WELL  
OIL PRODUCING WELL  
PROPOSED  
AI TD

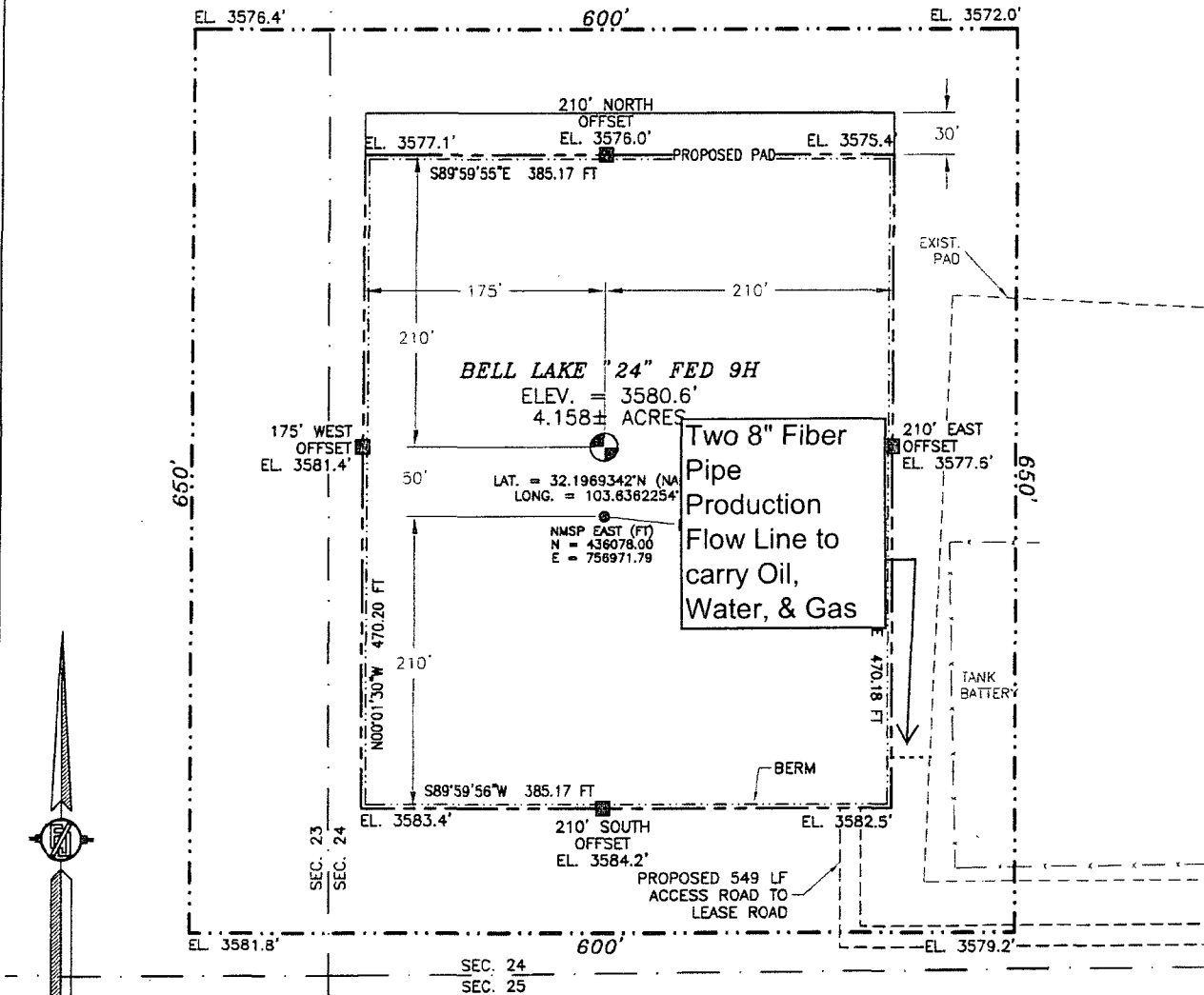
June 1, 2015



SECTION 24, TOWNSHIP 24 SOUTH, RANGE 32 EAST, N.M.P.M.  
LEA COUNTY, STATE OF NEW MEXICO

SITE MAP

NOTE: LATITUDE AND LONGITUDE COORDINATES ARE SHOWN USING THE NORTH AMERICAN DATUM OF 1983 (NAD83). LISTED NEW MEXICO STATE PLANE EAST COORDINATES ARE GRID (NAD83). BASIS OF BEARING AND DISTANCES USED ARE NEW MEXICO STATE PLANE EAST COORDINATES MODIFIED TO THE SURFACE



0 12 60 120 240

SCALE 1" = 120'

DIRECTIONS TO LOCATION

FROM THE INTERSECTION OF STATE HIGHWAY 128 AND CR 1 (ORLA HIGHWAY) GO EAST APPROX. 3.0 MILES ON STATE HIGHWAY 128 TO A LEASE ROAD ON RIGHT (SOUTH), TURN SOUTH GO 1.1 MILES TO A CATTLE GUARD ON RIGHT (WEST), TURN WEST ON LEASE ROAD GO WEST APPROX. 0.8 MILE, ROAD TURNS RIGHT (NORTH), GO NORTH APPROX. 543', THEN TURN LEFT (WEST) GO WEST APPROX. 456'. TURN RIGHT (NORTH) GO NORTH APPROX. 93' (549' TOTAL) TO THE SOUTHEAST PAD CORNER FOR THIS LOCATION.

DEVON ENERGY PRODUCTION COMPANY, L.P.

BELL LAKE "24" FED 9H

LOCATED 380 FT. FROM THE SOUTH LINE

AND 200 FT. FROM THE WEST LINE OF

SECTION 24, TOWNSHIP 24 SOUTH,

RANGE 32 EAST, N.M.P.M.

LEA COUNTY, STATE OF NEW MEXICO

JULY 6, 2015

SURVEY NO. 4089

MADRON SURVEYING, INC. 301 SOUTH CANAL

(575) 234-3341

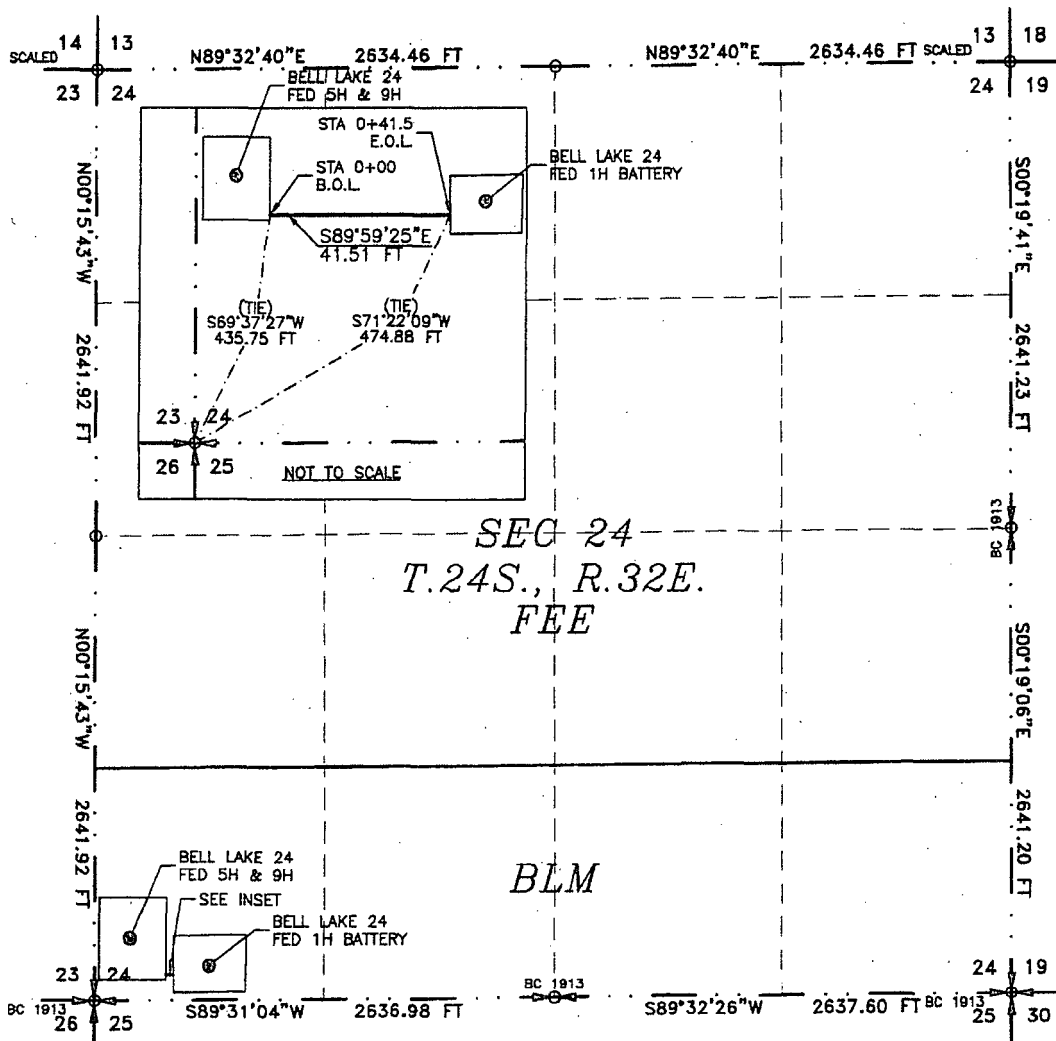
CARLSBAD, NEW MEXICO



# **FLOWLINE PLAT (400652XYZ)**

TWO - 8 INCH BURIED PRODUCTION FLOWLINES TO CARRY OIL, WATER, AND GAS  
FROM BELL LAKE 24 FED 5H & 9H TO BELL LAKE 24 FED 1H TANK BATTERY

**DEVON ENERGY PRODUCTION COMPANY, L.P.**  
CENTERLINE SURVEY OF A PIPELINE CROSSING  
SECTION 24, TOWNSHIP 25 SOUTH, RANGE 32 EAST, N.M.P.M.  
LEA COUNTY, STATE OF NEW MEXICO  
APRIL 6, 2016



SEE NEXT SHEET (2-4) FOR DESCRIPTION

## **SURVEYOR CERTIFICATE**

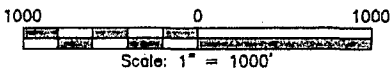
I, FILIMON F. JARAMILLO, A NEW MEXICO PROFESSIONAL SURVEYOR NO. 12797, HEREBY CERTIFY THAT I HAVE CONDUCTED AND AM RESPONSIBLE FOR THIS SURVEY, THAT THIS SURVEY IS TRUE AND CORRECT TO THE BEST OF MY KNOWLEDGE AND BELIEF, AND THAT THIS SURVEY AND PLAT MEET THE MINIMUM STANDARDS FOR LAND SURVEYING IN THE STATE OF NEW MEXICO.

IN WITNESS WHEREOF, THIS CERTIFICATE IS EXECUTED AT CARLSBAD, NEW MEXICO, THIS 11 DAY OF APRIL 2016

*Filimon F. Jaramillo*  
FILIMON F. JARAMILLO, PLS. 12797

MADRON SURVEYING, INC.  
301 SOUTH CANAL  
CARLSBAD, NEW MEXICO 88220  
Phone (575) 234-3341

SURVEY NO. 4555



## **GENERAL NOTES**

- 1.) THE INTENT OF THIS ROUTE SURVEY IS TO ACQUIRE AN EASEMENT.
- 2.) BASIS OF BEARING IS NMSP EAST MODIFIED TO SURFACE COORDINATES.

SHEET: 1-4

**MADRON SURVEYING, INC.** 301 SOUTH CANAL (575) 234-3341 **CARLSBAD, NEW MEXICO**

**FLOWLINE PLAT (400652XYZ)**

**TWO - 8 INCH BURIED PRODUCTION FLOWLINES TO CARRY OIL, WATER, AND GAS FROM  
BELL LAKE 24 FED 5H & 9H TO BELL LAKE 24 FED 1H TANK BATTERY**

**DEVON ENERGY PRODUCTION COMPANY, L.P.  
CENTERLINE SURVEY OF A PIPELINE CROSSING  
SECTION 24, TOWNSHIP 25 SOUTH, RANGE 32 EAST, N.M.P.M.  
LEA COUNTY, STATE OF NEW MEXICO  
APRIL 6, 2016**

**DESCRIPTION**

A STRIP OF LAND 30 FEET WIDE CROSSING BUREAU OF LAND MANAGEMENT LAND IN SECTION 24, TOWNSHIP 25 SOUTH, RANGE 32 EAST, N.M.P.M., LEA COUNTY, STATE OF NEW MEXICO AND BEING 15 FEET EACH SIDE OF THE FOLLOWING DESCRIBED CENTERLINE SURVEY:

BEGINNING AT A POINT WITHIN THE SW/4 SW/4 OF SAID SECTION 24, TOWNSHIP 25 SOUTH, RANGE 32 EAST, N.M.P.M., WHENCE THE SOUTHWEST CORNER OF SAID SECTION 24, TOWNSHIP 25 SOUTH, RANGE 32 EAST, N.M.P.M. BEARS S69°37'27"W, A DISTANCE OF 435.75 FEET;  
THENCE S89°59'25"E A DISTANCE OF 41.51 FEET THE TERMINUS OF THIS CENTERLINE SURVEY, WHENCE THE SOUTHWEST CORNER OF SAID SECTION 24, TOWNSHIP 25 SOUTH, RANGE 32 EAST, N.M.P.M. BEARS S71°22'09"W, A DISTANCE OF 474.88 FEET;

SAID STRIP OF LAND BEING 41.51 FEET OR 2.52 RODS IN LENGTH, CONTAINING 0.029 ACRES MORE OR LESS AND BEING ALLOCATED BY FORTIES AS FOLLOWS:

SW/4 SW/4 41.51 L.F. 2.52 RODS 0.029 ACRES

**SURVEYOR CERTIFICATE**

I, FILIMON F. JARAMILLO, A NEW MEXICO PROFESSIONAL SURVEYOR NO. 12797, HEREBY CERTIFY THAT I HAVE CONDUCTED AND AM RESPONSIBLE FOR THIS SURVEY, THAT THIS SURVEY IS TRUE AND CORRECT TO THE BEST OF MY KNOWLEDGE AND BELIEF, AND THAT THIS SURVEY AND PLAT MEET THE MINIMUM STANDARDS FOR LAND SURVEYING IN THE STATE OF NEW MEXICO.

IN WITNESS WHEREOF, THIS CERTIFICATE IS EXECUTED AT CARLSBAD,  
NEW MEXICO, THIS 07 DAY OF APRIL 2016

**GENERAL NOTES**

- 1.) THE INTENT OF THIS ROUTE SURVEY IS TO ACQUIRE AN EASEMENT.
- 2.) BASIS OF BEARING IS NMSP EAST MODIFIED TO SURFACE COORDINATES.

**SHEET: 2-4**

**MADRON SURVEYING, INC. CARLSBAD, NEW MEXICO**

FILIMON F. JARAMILLO, SLS 12797

301 SOUTH CANAL  
(575) 234-3341

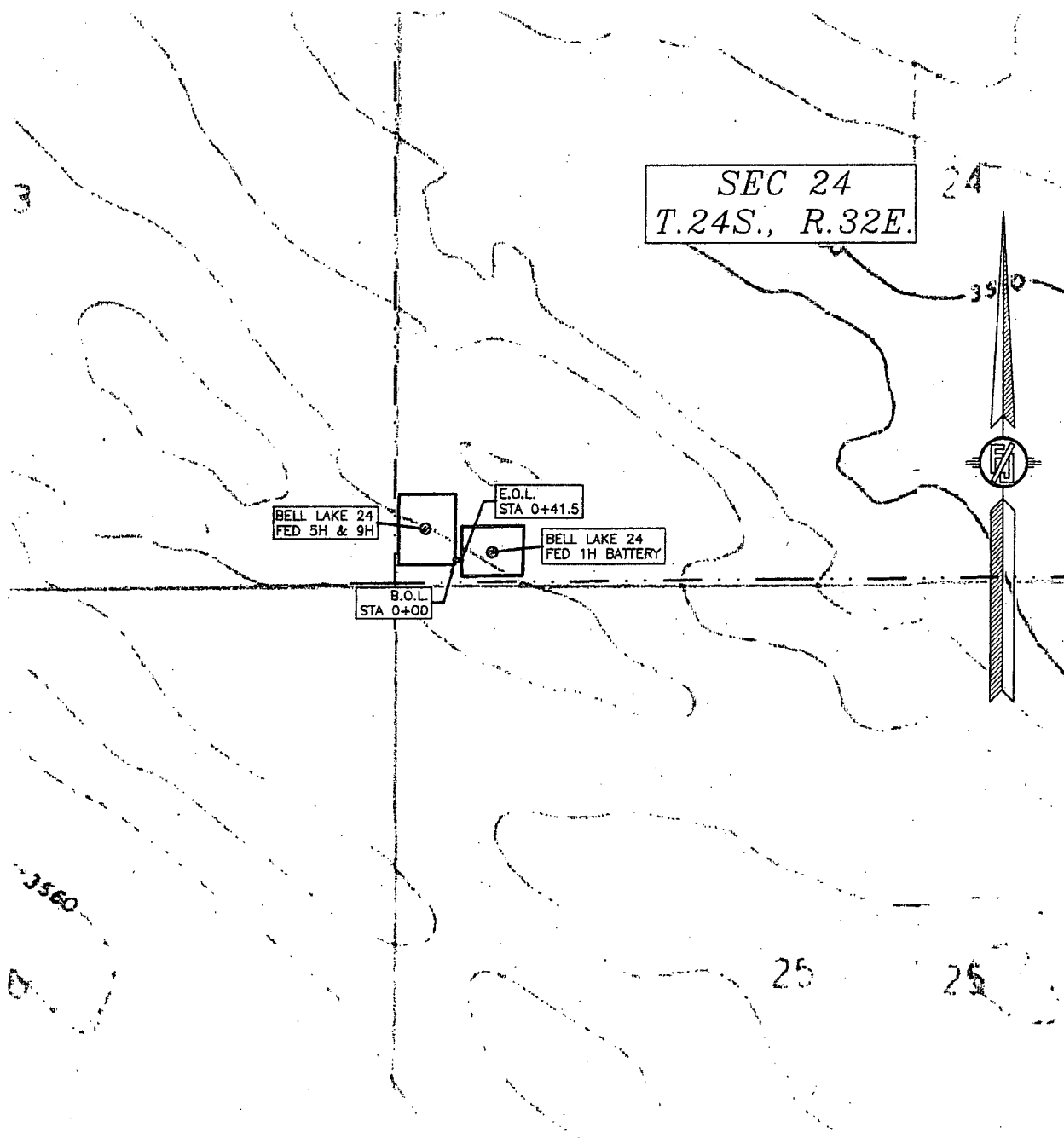
MADRON SURVEYING, INC.  
301 SOUTH CANAL  
CARLSBAD, NEW MEXICO 88220  
Phone (575) 234-3341

**SURVEY NO. 4555**

**FLOWLINE PLAT (400652XYZ)**

TWO - 8 INCH BURIED PRODUCTION FLOWLINES TO CARRY OIL, WATER, AND GAS  
FROM BELL LAKE 24 FED 5H & 9H TO BELL LAKE 24 FED 1H TANK BATTERY

DEVON ENERGY PRODUCTION COMPANY, L.P.  
CENTERLINE SURVEY OF A PIPELINE CROSSING  
SECTION 24, TOWNSHIP 25 SOUTH, RANGE 32 EAST, N.M.P.M.  
LEA COUNTY, STATE OF NEW MEXICO  
APRIL 6, 2016



SHEET: 3-4

MADRON SURVEYING, INC.

301 SOUTH CANAL  
(575) 234-3341

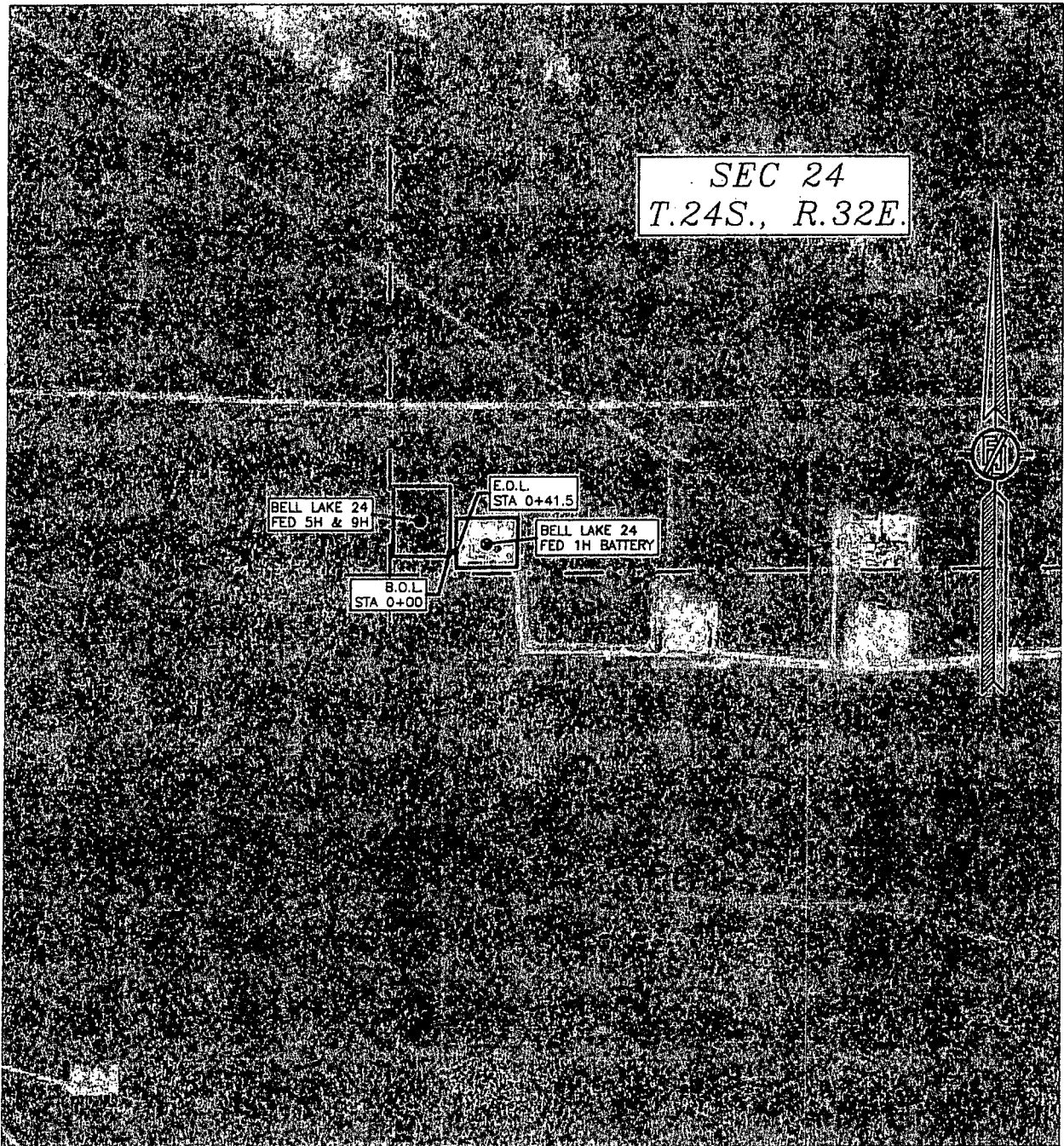
CARLSBAD, NEW MEXICO

SURVEY NO. 4555

**FLOWLINE PLAT (400652XYZ)**

TWO - 8 INCH BURIED PRODUCTION FLOWLINES TO CARRY OIL, WATER, AND GAS  
FROM BELL LAKE 24 FED 5H & 9H TO BELL LAKE 24 FED 1H TANK BATTERY

DEVON ENERGY PRODUCTION COMPANY, L.P.  
CENTERLINE SURVEY OF A PIPELINE CROSSING  
SECTION 24, TOWNSHIP 25 SOUTH, RANGE 32 EAST, N.M.P.M.  
LEA COUNTY, STATE OF NEW MEXICO  
APRIL 6, 2016



SHEET: 4-4

MADRON SURVEYING, INC. 301 SOUTH CANAL (575) 234-3341 CARLSBAD, NEW MEXICO

SURVEY NO. 4555