

MAR 29 2016

FORM C-102

Revised August 1, 2011

RECEIVED

Submission Copy to appropriate

District Office

☐ AMENDED REPORT

District I  
1625 N. French Dr., Hobbs, NM 88240  
Phone: (575) 393-6161 Fax: (575) 393-0720

District II  
811 S. First St., Artesia, NM 88210  
Phone: (575) 748-1283 Fax: (575) 748-9720

District III  
1000 Rio Brazos Road, Aztec, NM 87410  
Phone: (505) 334-6178 Fax: (505) 334-6170

District IV  
1220 S. St. Francis Dr., Sante Fe, NM 87505  
Phone: (505) 476-3460 Fax: (505) 476-3462

State of New Mexico  
Energy, Minerals & Natural Resources  
Department  
OIL CONSERVATION DIVISION  
1220 South St. Francis Dr.  
Sante Fe, NM 87505

## WELL LOCATION AND ACREAGE DEDICATION PLAT

<sup>1</sup> API Number 30-025-41718	<sup>2</sup> Pool Code 16720	<sup>3</sup> Pool Name DEAN; PERMO UPPER PENN
<sup>4</sup> Property Code 40453	<sup>5</sup> Property Name OLIVINE 05 16 37 TL STATE	<sup>6</sup> Well Number #001
<sup>7</sup> OGRID No. 228937	<sup>8</sup> Operator Name MATADOR PRODUCTION COMPANY	<sup>9</sup> Elevation 3841'

<sup>10</sup>Surface Location

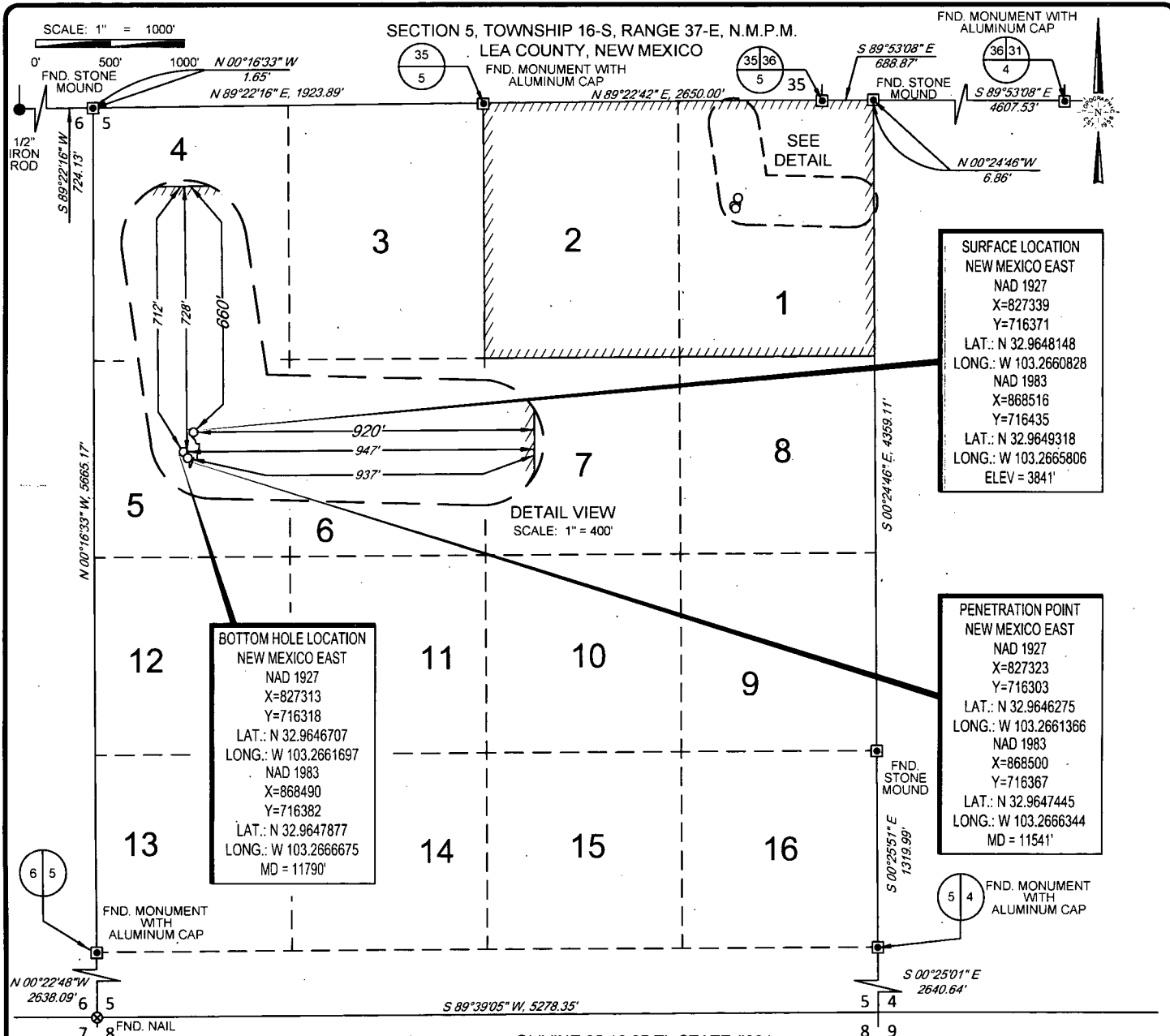
UL or lot no.	Section	Township	Range	Lot Idn	Feet from the	North/South line	Feet from the	East/West line	County
1	05	16-S	37-E	-	660'	NORTH	920'	EAST	LEA

UL or lot no.	Section	Township	Range	Lot Idn	Feet from the	North/South line	Feet from the	East/West	County
1	05	16-S	37-E	-	712'	NORTH	947'	EAST	LEA
<sup>11</sup> Dedicated Acres 104.23	<sup>12</sup> Joint or Infill	<sup>13</sup> Consolidation Code	<sup>14</sup> Order No.						

No allowable will be assigned to this completion until all interests have been consolidated or a non-standard unit has been approved by the division.

<p><b>BOTTOM HOLE LOCATION</b> NEW MEXICO EAST NAD 1927 X=827313 Y=716318 LAT.: N 32.9646707 LONG.: W 103.2661697 NAD 1983 X=868490 Y=716382 LAT.: N 32.9647877 LONG.: W 103.2666675 MD = 11790'</p> <p><b>PENETRATION POINT</b> NEW MEXICO EAST NAD 1927 X=827323 Y=716303 LAT.: N 32.9646275 LONG.: W 103.2661366 NAD 1983 X=868500 Y=716367 LAT.: N 32.9647445 LONG.: W 103.2666344 MD = 11541'</p>	<p><b><sup>17</sup>OPERATOR CERTIFICATION</b> I hereby certify that the information contained herein is true and complete to the best of my knowledge and belief, and that this organization either owns a working interest or unleased mineral interest in the land including the proposed bottom hole location or has a right to drill this well at this location pursuant to a contract with an owner of such a mineral or working interest, or to a voluntary pooling agreement or a compulsory pooling order heretofore entered by the division.</p> <p><i>Signature</i> <b>JEFF LIERLY</b> <b>3-28-16</b> Date Printed Name jliery@matadorresources.com e-mail Address</p> <p><b><sup>18</sup>SURVEYOR CERTIFICATION</b> I hereby certify that the well location shown on this plat was plotted from field notes of actual surveys made by me or under my supervision, and that the same is true to the best of my belief.</p> <p><i>Signature</i> <b>MICHAEL BROWN</b> Date of Survey <b>09/11/2015</b> Professional Surveyor Certificate Number <b>18329</b></p>
--	--

MAY 06 2016



**SURFACE LOCATION  
NEW MEXICO EAST**  
NAD 1927  
X=827339  
Y=716371  
LAT.: N 32.9648148  
LONG.: W 103.2660828  
NAD 1983  
X=868516  
Y=716435  
LAT.: N 32.9649318  
LONG.: W 103.2665806  
ELEV = 3841'

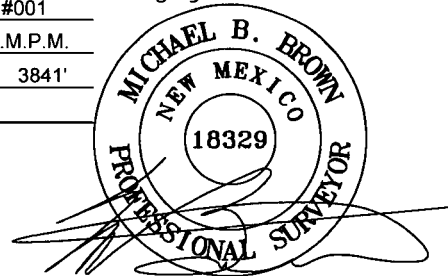
**BOTTOM HOLE LOCATION  
NEW MEXICO EAST**  
NAD 1927  
X=827313  
Y=716318  
LAT.: N 32.9646707  
LONG.: W 103.2661697  
NAD 1983  
X=868490  
Y=716382  
LAT.: N 32.9647877  
LONG.: W 103.2666675  
MD = 11790'

**PENETRATION POINT  
NEW MEXICO EAST**  
NAD 1927  
X=827323  
Y=716303  
LAT.: N 32.9646275  
LONG.: W 103.2661366  
NAD 1983  
X=868500  
Y=716367  
LAT.: N 32.9647445  
LONG.: W 103.2666344  
MD = 11541'

LEASE NAME & WELL NO.: OLIVINE 05 16 37 TL STATE #001  
SECTION 05 TWP 16-S RGE 37-E SURVEY N.M.P.M.  
COUNTY LEA STATE NM ELEVATION 3841'  
DESCRIPTION 660' FNL & 920' FEL



**TOPOGRAPHIC**  
LOYALTY INNOVATION LEGACY  
1400 EVERMAN PARKWAY, Ste. 197 • FT. WORTH, TEXAS 76140  
TELEPHONE: (817) 744-7512 • FAX (817) 744-7548  
2903 NORTH BIG SPRING • MIDLAND, TEXAS 79705  
TELEPHONE: (432) 682-1653 OR (800) 767-1653 • FAX (432) 682-1743  
WWW.TOPOGRAPHIC.COM



Michael Blake Brown, P.S. No. 18329  
MARCH 24, 2016

OLIVINE 05 16 37 TL STATE  
#001

REVISION:

DATE: 03/24/16

FILE: AD\_OLIVINE\_05-16S-37E\_TL\_STATE\_001

DRAWN BY: MML

SHEET: 1 OF 1

NOTES:

1. ORIGINAL DOCUMENT SIZE: 8.5" X 11"
2. ALL BEARINGS, DISTANCES, AND COORDINATE VALUES CONTAINED HEREIN ARE GRID BASED UPON THE NEW MEXICO STATE PLANE COORDINATE SYSTEM, EAST ZONE, U.S. SURVEY FEET, NORTH AMERICAN DATUM 1927.
3. THIS EASEMENT/SERVITUDE LOCATION SHOWN HEREON HAS BEEN SURVEYED ON THE GROUND UNDER MY SUPERVISION AND PREPARED ACCORDING TO THE EVIDENCE FOUND AT THE TIME OF SURVEY, AND DATA PROVIDED BY MATADOR PRODUCTION COMPANY. THIS CERTIFICATION IS MADE AND LIMITED TO THOSE PERSONS OR ENTITIES SHOWN ON THE FACE OF THIS PLAT AND IS NON-TRANSFERABLE. THIS SURVEY IS CERTIFIED FOR THIS TRANSACTION ONLY.