

District I
1625 N. French Dr., Hobbs, NM 88240
Phone: (575) 393-6161 Fax: (575) 393-0720
District II
811 S. First St., Artesia, NM 88210
Phone: (575) 748-1283 Fax: (575) 748-9720
District III
1000 Rio Brazos Road, Aztec, NM 87410
Phone: (505) 334-6178 Fax: (505) 334-6170
District IV
1220 S. St. Francis Dr., Santa Fe, NM 87505
Phone: (505) 476-3460 Fax: (505) 476-3462

State of New Mexico
Energy, Minerals & Natural Resources Department
OIL CONSERVATION DIVISION
1220 South St. Francis Dr.
Santa Fe, NM 87505

Form C-102
Revised August 1, 2011
Submit one copy to appropriate
District Office

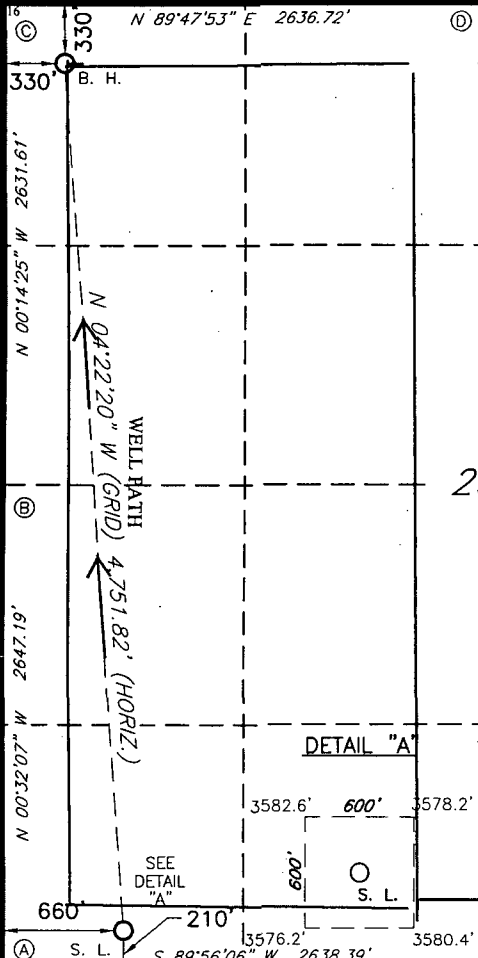
MAY 05 2016

☐ AMENDED REPORT

WELL LOCATION AND ACREAGE DEDICATION PLAT

1 API Number 30-025-43215		2 Pool Code 41442		3 Pool Name LUSK EAST BONE SPRING					
4 Property Code 316193		5 Property Name McKAMEY 25 B2MD FED COM						6 Well Number 1H	
7 OGRID NO. 14744		8 Operator Name MEWBOURNE OIL COMPANY						9 Elevation 3578'	
10 Surface Location									
UL or lot no. M	Section 25	Township 19S	Range 32E	Lot Idn	Feet from the 210	North/South line SOUTH	Feet From the 660	East/West line WEST	County LEA
11 Bottom Hole Location If Different From Surface									
UL or lot no. D	Section 25	Township 19S	Range 32E	Lot Idn	Feet from the 330	North/South line NORTH	Feet from the 330	East/West line WEST	County LEA
12 Dedicated Acres 320		13 Joint or Infill		14 Consolidation Code NSL		15 Order No.			

No allowable will be assigned to this completion until all interest have been consolidated or a non-standard unit has been approved by the division.

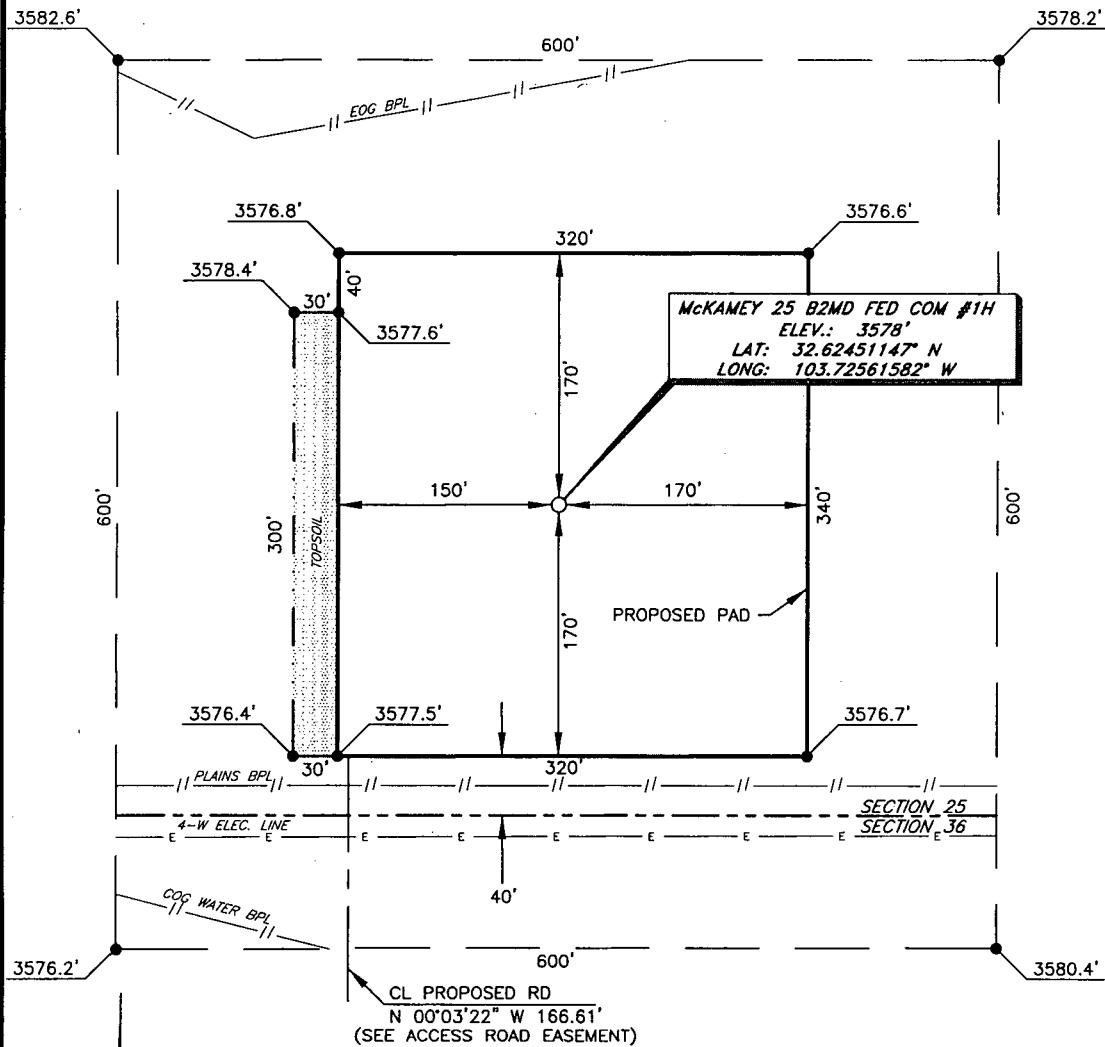
	<p>16 GEODETIC DATA NAD 27 GRID - NM EAST</p> <p>SURFACE LOCATION N 591443.6 - E 687102.6 LAT: 32.62451147° N LONG: 103.72561582° W</p> <p>BOTTOM HOLE N 596181.6 - E 686740.4</p> <p>PROJECT AREA</p> <p>CORNER DATA NAD 27 GRID - NM EAST</p> <p>A: FOUND BRASS CAP "1912" N 591232.9 - E 686444.8</p> <p>B: FOUND BRASS CAP "1912" N 593879.5 - E 686420.0</p> <p>C: FOUND BRASS CAP "1912" N 596510.5 - E 686409.0</p> <p>D: FOUND BRASS CAP "1912" N 596519.8 - E 689045.1</p> <p>E: FOUND BRASS CAP "1912" N 596527.8 - E 691681.4</p> <p>F: FOUND BRASS CAP "1912" N 593885.7 - E 691698.0</p> <p>G: FOUND BRASS CAP "1912" N 591242.6 - E 691720.7</p> <p>H: FOUND BRASS CAP "1912" N 591235.9 - E 689082.6</p> <p>PRODUCING AREA</p>	<p>17 OPERATOR CERTIFICATION I hereby certify that the information contained herein is true and complete to the best of my knowledge and belief, and that this organization either owns a working interest or unleased mineral interest in the land including the proposed bottom hole location or has a right to drill this well at this location pursuant to a contract with an owner of such a mineral or working interest, or to a voluntary pooling agreement or a compulsory pooling order heretofore entered by the division.</p> <p><i>Bradley Bishop</i> Z-10-15 Signature Date BRADLEY BISHOP Printed Name E-mail Address</p> <p>18 SURVEYOR CERTIFICATION I hereby certify that the well location shown on this plat was plotted from field notes of actual surveys made by me or under my supervision, and that the same is true and correct to the best of my belief.</p> <p>11-10-14 Date of Survey Signature and Seal of Professional Surveyor 19680 Certificate Number</p>
---	---	--

RRC - Firm No.: TX 10193838 NM 4655451 - Job No.: LS140468

MAY 10 2016

EXHIBIT "3"

MEWBOURNE OIL COMPANY McKAMEY 25 B2MD FED COM #1H (210' FSL & 660' FWL) SECTION 25, T19S, R32E N. M. P. M., LEA CO., NEW MEXICO



DIRECTIONS TO LOCATION

From the intersection of CR-126A (Maljamar) and CR-126 (Dry Lake);
Go East on lease road approx. 5.0 miles to a lease road on right;
Turn right and go South turning Southeast approx. 2.1 miles to a "T";
Turn right go Southwest approx. 0.9 miles to a "Y";
Take right fork and go Northwest approx. 0.6 miles to a "T";
Turn left and go Southwest turning South approx. 0.4 miles to a "T";
Turn right and go West approx. 0.8 miles to proposed road on the right;
Turn right and go North approx. 336 feet to location on the right.

SCALE: 1" = 100'
0 50 100
BEARINGS ARE
NAD 27 GRID - NM EAST
DISTANCES ARE
GROUND.

Firm No.: TX 10193838 NM 4655451

Copyright 2014 - All Rights Reserved

NO.	REVISION	DATE
JOB NO.:	LS140468	
DWG. NO.:	140468PAD	

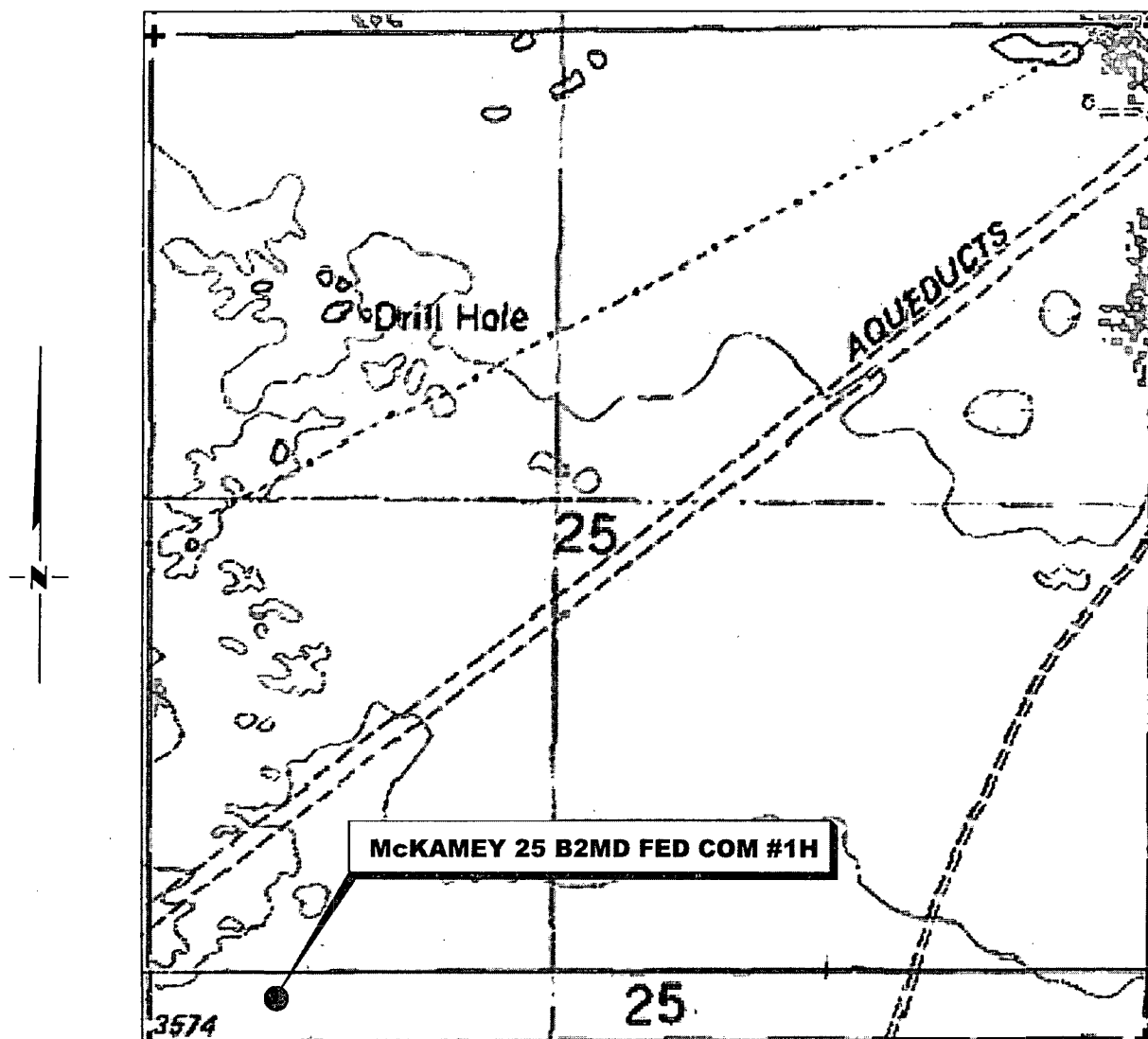
RRC

308 W. BROADWAY ST., HOBBS, NM 88240 (575) 964-8200

SCALE: 1" = 100'
DATE: 11-10-14
SURVEYED BY: BK/KR
DRAWN BY: JC
APPROVED BY: RMH
SHEET: 1 OF 1

EXHIBIT "3A"

LOCATION VERIFICATION MAP



SECTION 25, TWP. 19 SOUTH, RGE. 32 EAST,
N. M. P. M., LEA COUNTY, NEW MEXICO

OPERATOR: Mewbourne Oil Company
LEASE: McKamey 25 B2MD Fed Com
WELL NO.: 1H
ELEVATION: 3578'

LOCATION: 210' FSL & 660' FWL
CONTOUR INTERVAL: 10'
USGS TOPO. SOURCE MAP:
Laguna Gatuna, NM (1984)

Firm No.: TX 10193838 NM 4655451

Copyright 2014 - All Rights Reserved

NO.	REVISION	DATE
JOB NO.:	LS140468	
DWG. NO.:	140468VM	

RRC

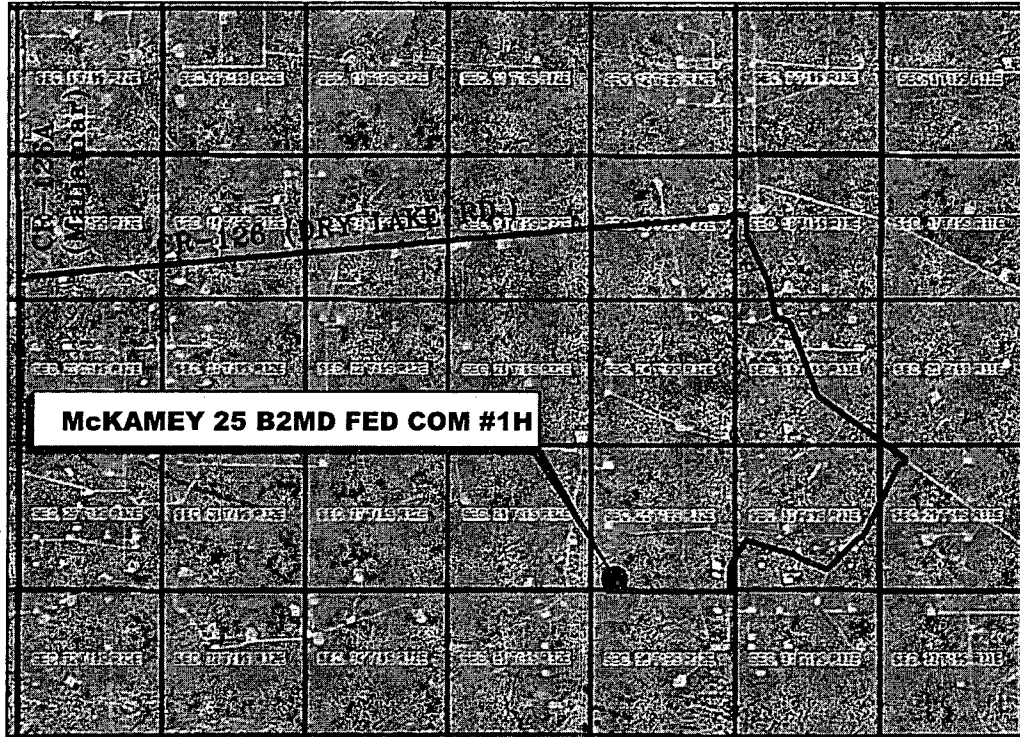
308 W. BROADWAY ST., HOBBS, NM 88240 (575) 964-8200

SCALE: N.T.S.
DATE: 11-10-14
SURVEYED BY: BK/KR
DRAWN BY: JC
APPROVED BY: RMH
SHEET : 1 OF 1

EXHIBIT "3B"

VICINITY MAP

NOT TO SCALE



*SECTION 25, TWP. 19 SOUTH, RGE. 32 EAST,
N. M. P. M., LEA COUNTY, NEW MEXICO*

OPERATOR: Mewbourne Oil Company
LEASE: McKamey 25 B2MD Fed Com
WELL NO.: 1H

LOCATION: 210' FSL & 660' FWL
ELEVATION: 3578'

Firm No.: TX 10193838 NM 4655451

Copyright 2014 - All Rights Reserved

NO.	REVISION	DATE
JOB NO.: LS140468		
DWG. NO.: 140468VM		

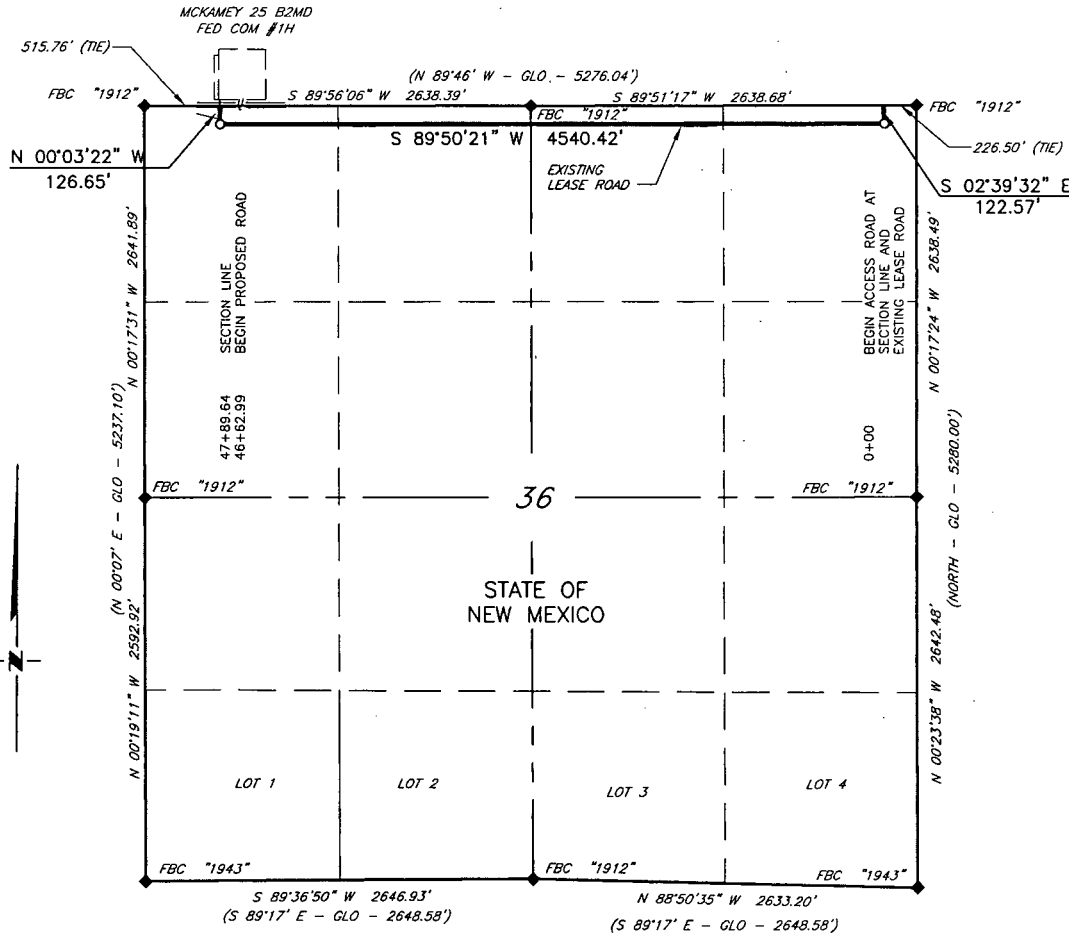
RRC

308 W. BROADWAY ST., HOBBS, NM 88240 (575) 964-8200

SCALE: N.T.S.
DATE: 11-10-14
SURVEYED BY: BK/KR
DRAWN BY: JC
APPROVED BY: RMH
SHEET : 1 OF 1

EXHIBIT "3C"

MEWBOURNE OIL COMPANY PROPOSED ACCESS ROAD EASEMENT FOR THE McKAMEY 25 B2MD FED COM #1H SECTION 36, T19S, R32E N. M. P. M., LEA CO., NEW MEXICO



SCALE: 1" = 1000'
0 500 1000

BEARINGS ARE GRID NAD 27
NM EAST
DISTANCES ARE HORIZ. GROUND.

LEGEND

- ◇ RECORD DATA - GLO
- ◇ FOUND MONUMENT AS NOTED
- E— PROPOSED ROAD
- E— OVERHEAD UTILITIES
- ||— EXISTING BPL

I, R. M. Howett, a N. M. Professional Surveyor, hereby certify that I prepared this plat from an actual survey made on the ground under my direct supervision, said survey and plat meet the Min. Stds. for Land Surveying in the State of N. M. and are true and correct to the best of my knowledge and belief.

Robert M. Howett



Firm No.: TX 10193838 NM 4655451

Robert M. Howett NM PS 19680

Copyright 2014 - All Rights Reserved

NO.	REVISION	DATE
JOB NO.:	LS140468	
DWG. NO.:	140468RD	

RRC

308 W. BROADWAY ST., HOBBES, NM 88240 (575) 964-8200

SCALE: 1" = 1000'
DATE: 11/10/14
SURVEYED BY: BK/KR
DRAWN BY: JC
APPROVED BY: RMH
SHEET : 1 OF 2

**MEWBOURNE OIL COMPANY
PROPOSED ACCESS ROAD EASEMENT FOR THE
McKAMEY 25 B2MD FED COM #1H
SECTION 36, T19S, R32E
N. M. P. M., LEA CO., NEW MEXICO**

DESCRIPTION

A strip of land 20 feet wide, being 4,789.64 feet or 290.281 rods in length, lying in Section 36, Township 19 South, Range 32 East, N. M. P. M., Eddy County, New Mexico, being 10 feet left and 10 feet right of the following described survey of an existing lease road and proposed road centerline across State of New Mexico land:

BEGINNING at a point on the North line of Section 36 and the centerline of an existing lease road which bears S 89°51'17" W, 226.50 feet from a brass cap, stamped "1914", found for the Northeast corner of Section 36;

Thence S 02°39'32" E, 122.57 feet, along the centerline of the existing lease road, to a point;

Thence S 89°50'21" W, 4,540.42 feet along the centerline of an existing lease road, to a point and the BEGINNING of a proposed road;

Thence N 00°03'22" W, 126.65 feet, to a point on the North line of Section 36, which bears N 89°56'06" E 515.78 feet from a brass cap, stamped "1912", found for the Northwest corner of Section 36.

Said strip of land contains 2.199 Acres, more or less, and is allocated by forties as follows:

NE 1/4 NE 1/4	73.959 Rods	0.560 Acres
NE 1/4 NW 1/4	79.958 Rods	0.606 Acres
NW 1/4 NE 1/4	79.956 Rods	0.606 Acres
NW 1/4 NW 1/4	56.408 Rods	0.427 Acres

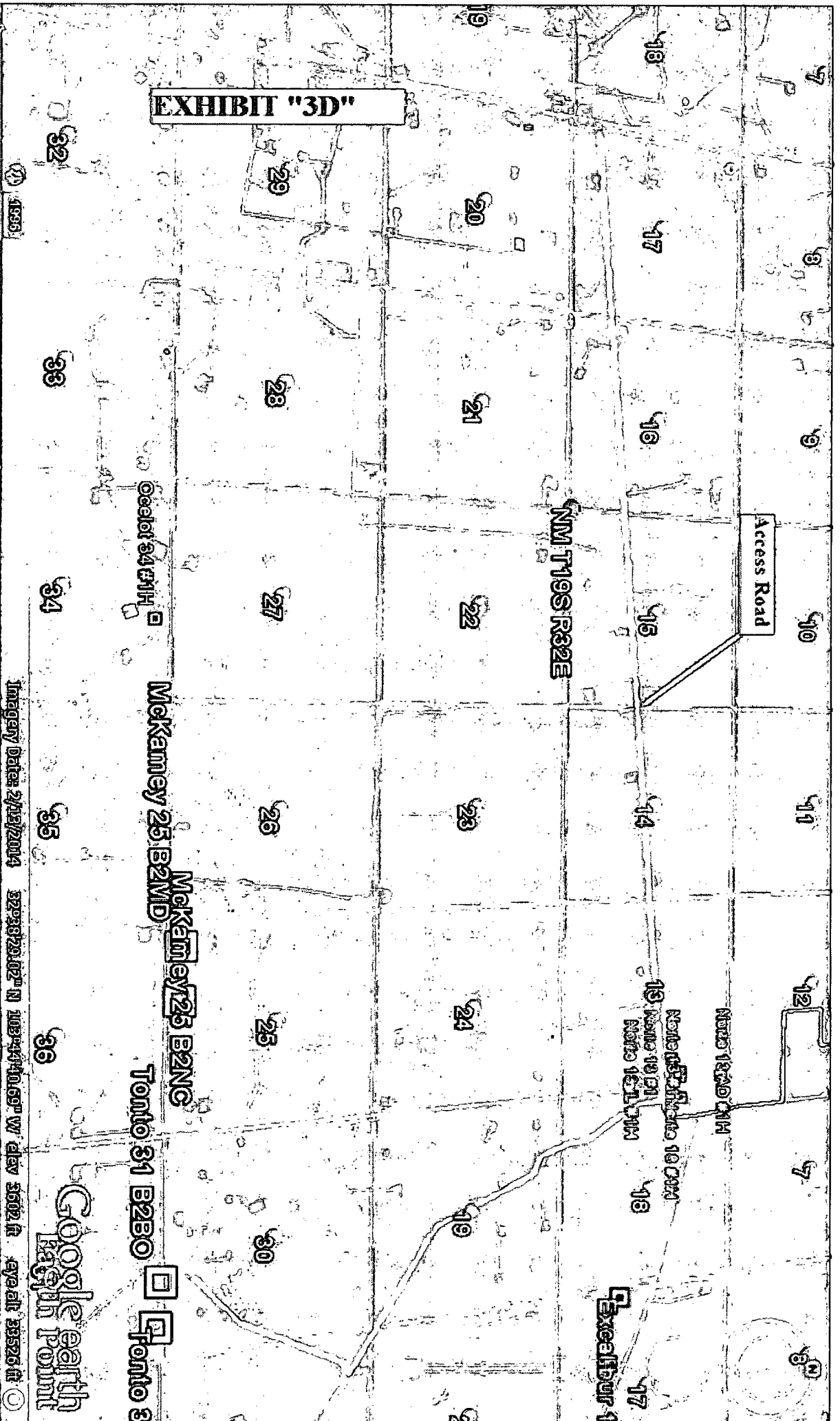
Firm No.: TX 10193838 NM 4655451

Copyright 2014 - All Rights Reserved

<div style="text-align: center;">  </div>			SCALE: 1" = 1000'
			DATE: 11/10/14
			SURVEYED BY: BK/KR
			DRAWN BY: JC
NO.	REVISION	DATE	APPROVED BY: RMH
JOB NO.: LS140468			SHEET : 2 OF 2
DWG. NO.: 140468RD			

308 W. BROADWAY ST., HOBBES, NM 88240 (575) 964-8200

EXHIBIT "3D"



Imagery Date: 2/13/2014

32°38'20.02" N 108°44'10.69" W elev 3602 ft

eye alt 33526 ft

Google Earth

Kayin Point

McKamey 25 B2ND

McKamey 25 B2NC

Tonto 31 B2BO

Tonto 31 B2BO

NM T19S R32E

Access Road

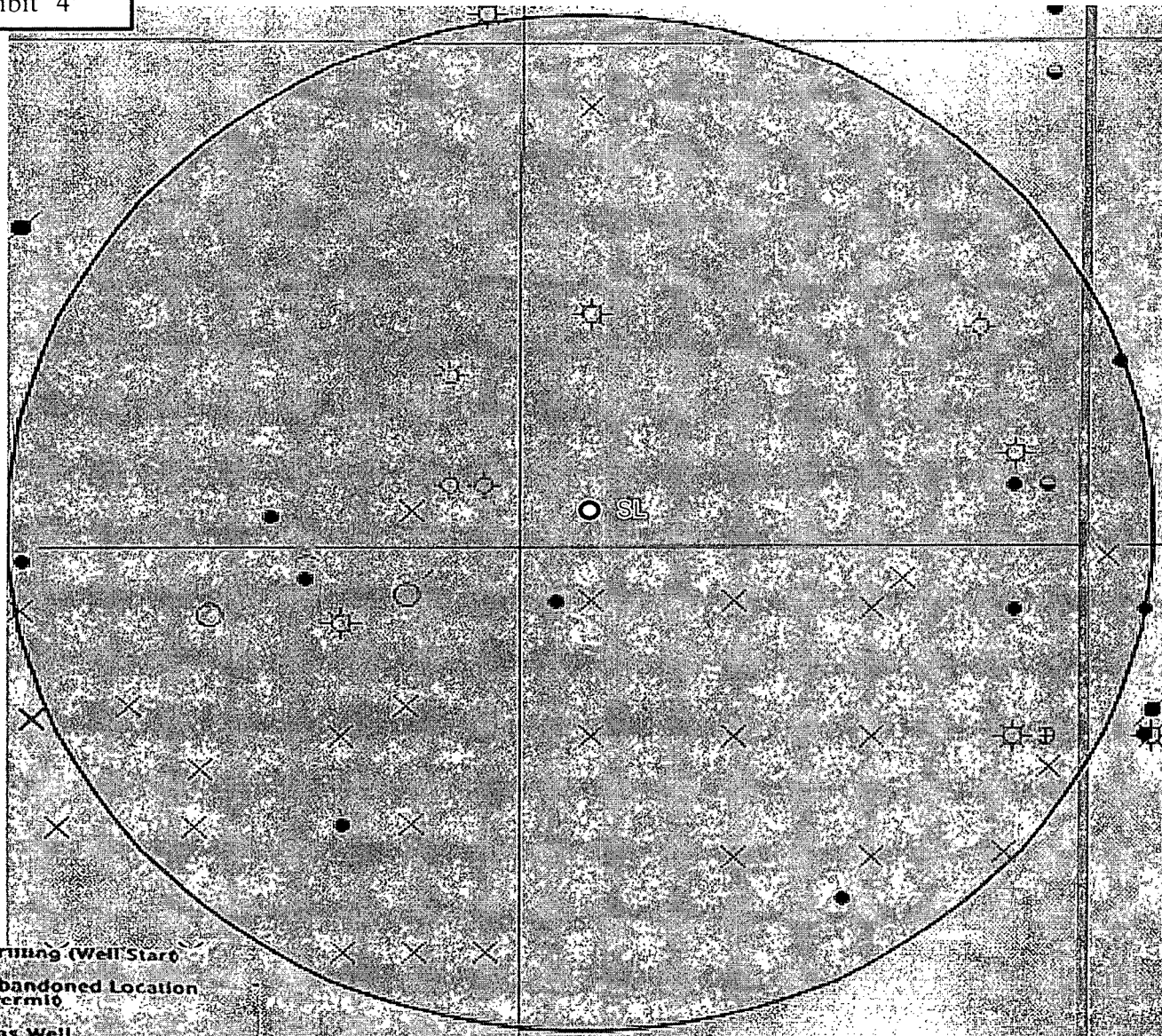
North 1000 ft

North 1000 ft

North 1000 ft

Excalibur

Exhibit "4"



○	Drilling (Well Start)
×	Abandoned Location (Permio)
✕	Gas Well
●	Oil Well
✱	Oil and Gas Well
■	Other (Observation, etc.)
◊	Injection Well
○	Suspended
✕	Plugged Gas Well
✕	Plugged Oil Well
✱	Plugged Oil and Gas
◇	Dry Hole (No Shows)
◇	Dry Hole w/Gas Show
◇	Dry Hole w/Oil Show
◇	Dry Hole w/Oil and Gas Show

Surface Location
McKamey 25 B2MD Fed Com #1H
Sec 25 T19S R32E

Exhibit "4A"

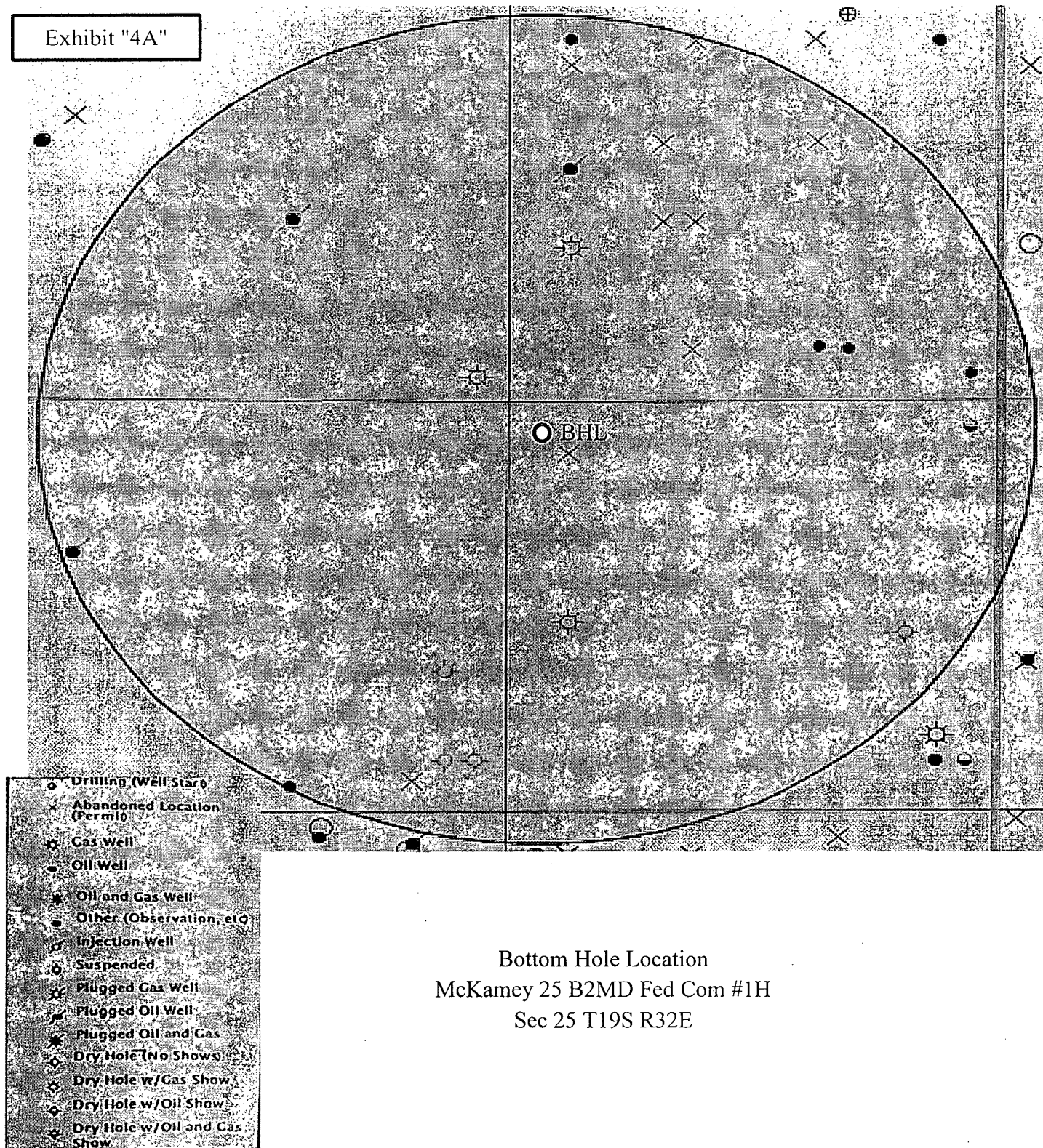
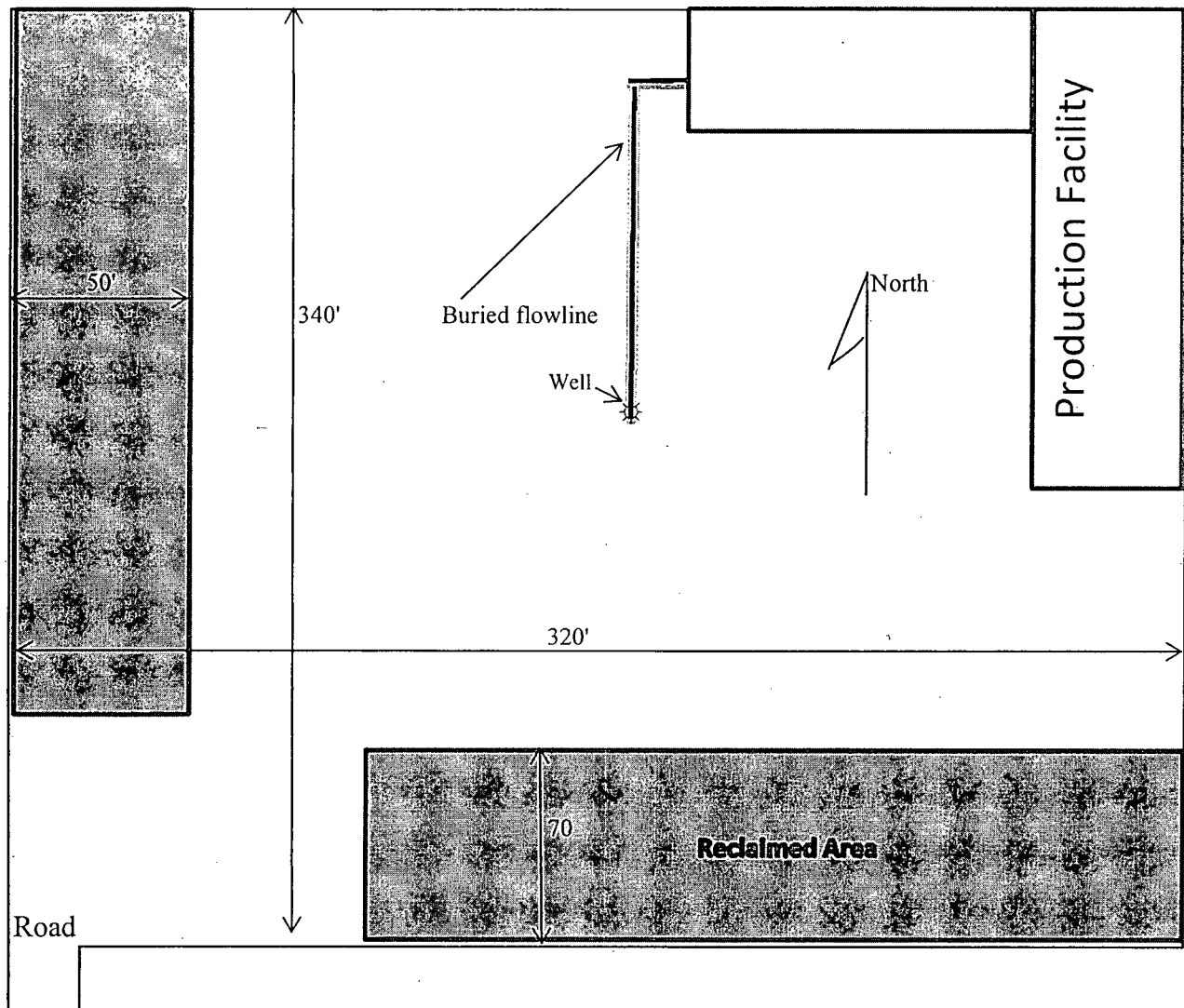


Exhibit 5: Reclaim

Closed Loop Pad Dimensions 320' x 340'



Mewbourne Oil Company
McKamey 25 B2MD Fed Com #1H
210' FSL & 660' FWL
Sec. 25 T19S R32E
Lea Co. NM