

3477.7'

600'

600'

3478.3'

3475.8'

3476.0'

3477.0'

295'

100'

145'

150'

245'

245'

3475.1'

30'

3475.0'

295'

3475.2'

600'

3474.6'

600'

3474.8'

WEST BLINEBRY DRINKARD UNIT #66W
ELEV.: 3477'
LAT: 32.48116960° N (NAD27)
LONG: 103.17915057° W (NAD27)

TOP SOIL

PROPOSED PAD

EXISTING PAD

EXISTING BATTERY

TARGA BPL

OVERHEAD ELECTRIC

APACHE WBDU #66

CL PROPOSED ROAD
S 89°57'40" W 44.56'

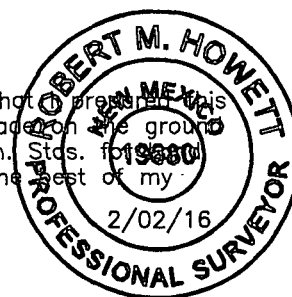
CL PROPOSED 2" FIBERGLASS BPL
N 00°02'34" W 227.83'
(SEE EASEMENT)

COUNTY RD #33 (TURNER RD)


*From the intersection of CR-49 (Hill Rd.) and CR-33 (Turner Rd.);
Go South on CR-33 approx. 0.9 miles to a lease road on the right;
Turn right and go West approx. 240 feet to location on the right.*

I, R. M. Howett, a N. M. Professional Surveyor, hereby certify that I prepared this unclassified survey of a well location from an actual survey made on the ground under my direct supervision, said survey and plat meet the Min. Stas. for Professional Surveying in the State of N. M. and are true and correct to the best of my knowledge and belief.

knowledge and belief.
Robert M. Howett
Robert M. Howett NM PS 19680



SCALE: 1" = 100'



0 50 100

BEARINGS ARE
NAD 27 GRID - NM EAST
DISTANCES ARE GROUND

Firm No.: TX 10193838 NM 4655451

Copyright 2014 – All Rights Reserved

| | | |
|----------------------|----------|------|
| | | |
| | | |
| | | |
| NO. | REVISION | DATE |
| JOB NO.: LS1601030 | | |
| DWG. NO.: 1601030PAD | | |

RRC

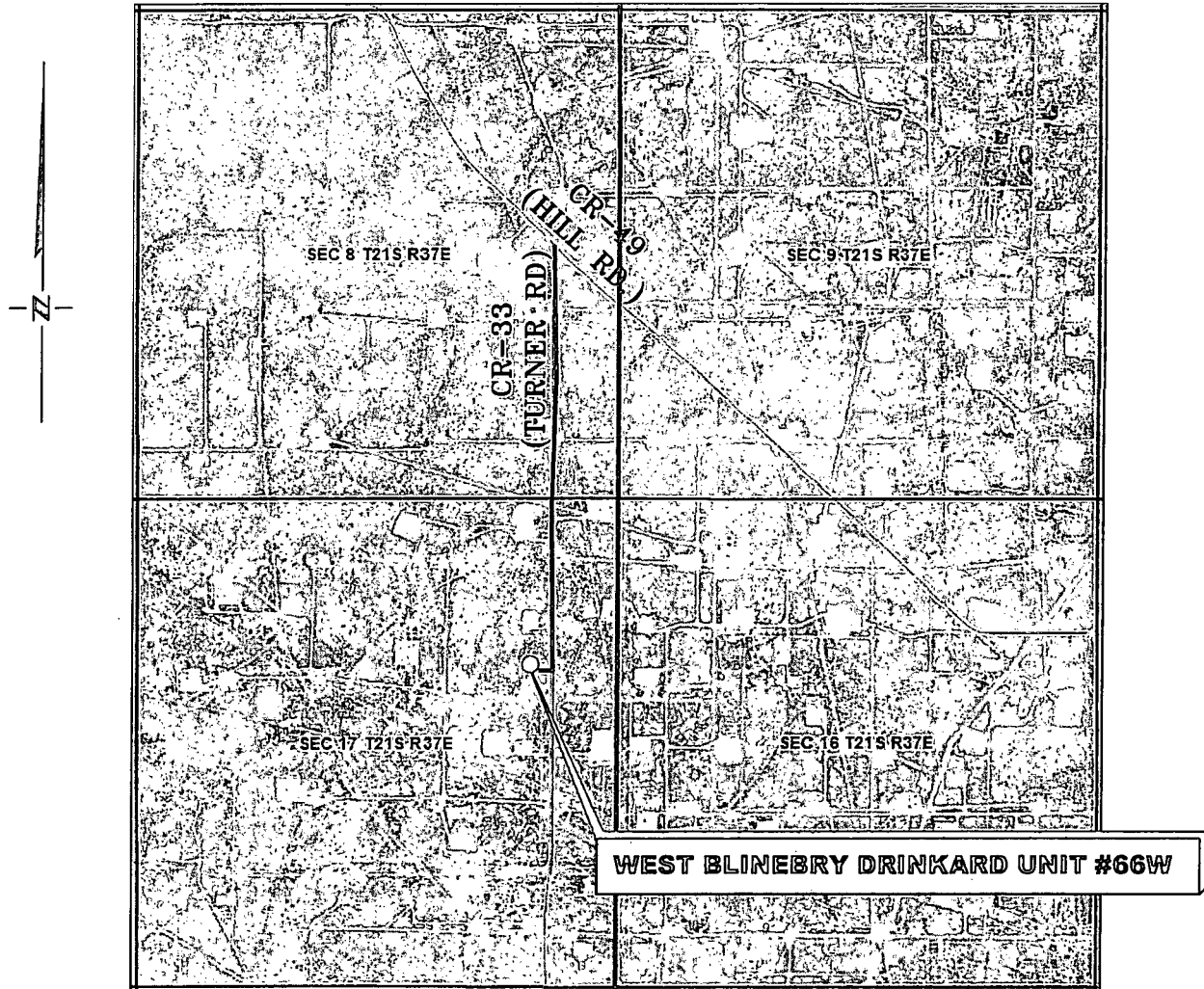
308 W. BROADWAY ST., HOBBS, NM 88240 (575) 964-8200

| |
|--------------------|
| SCALE: 1" = 100' |
| DATE: 1-28-2016 |
| SURVEYED BY: ML/CE |
| DRAWN BY: LPS |
| APPROVED BY: RMH |
| SHEET : 1 OF 1 |

VICINITY MAP

Exhibit #1

NOT TO SCALE



**SECTION 17, TWP. 21 SOUTH, RGE. 37 EAST,
N. M. P. M., LEA CO., NEW MEXICO**

OPERATOR: Apache Corporation
LEASE: West Blinebry Drinkard Unit
WELL NO.: 66W

LOCATION: 1780' FNL & 940' FEL
ELEVATION: 3477'

Firm No.: TX 10193838 NM 4655451

Copyright 2014 - All Rights Reserved

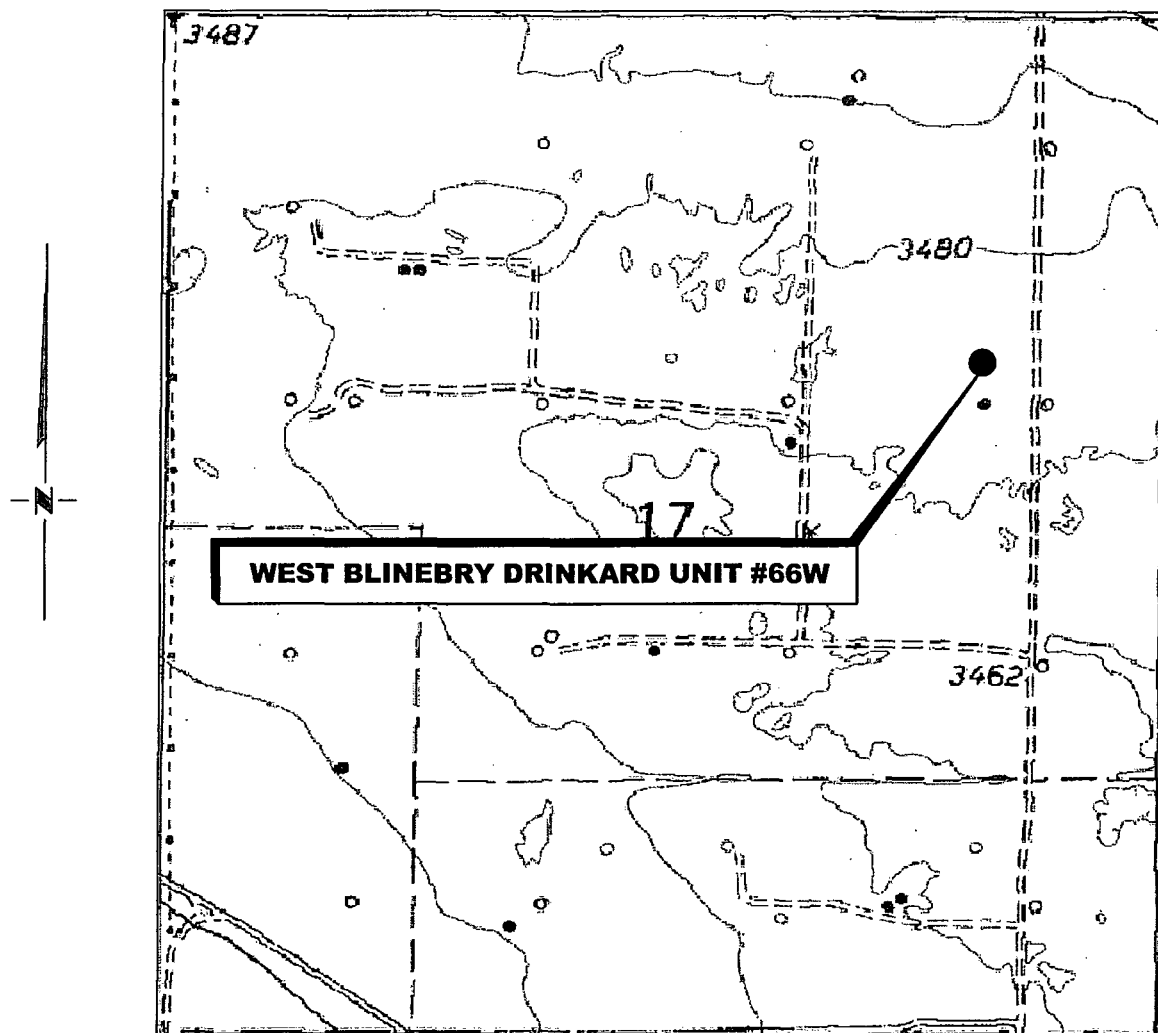
RRC

| NO. | REVISION | DATE |
|-----------|-----------|------|
| JOB NO.: | LS1601030 | |
| DWG. NO.: | 1601030VM | |

308 W. BROADWAY ST., HOBBS, NM 88240 (575) 964-8200

| |
|--------------------|
| SCALE: NTS |
| DATE: 1-28-2016 |
| SURVEYED BY: BK/CG |
| DRAWN BY: LPS |
| APPROVED BY: RMH |
| SHEET : 1 OF 1 |

LOCATION VERIFICATION MAP



(Eunice, NM, is located approx. 3.3 miles to the Southeast.)

**SECTION 17, TWP. 21 SOUTH, RGE. 37 EAST,
N. M. P. M., LEA CO., NEW MEXICO**

OPERATOR: Apache Corporation
 LEASE: West Blinebry Drinkard Unit
 WELL NO.: 66W
 ELEVATION: 3477'

LOCATION: 1780' FNL & 940' FEL
 CONTOUR INTERVAL: 10'
 USGS TOPO. SOURCE MAP:
Eunice, NM (1969)

Firm No.: TX 10193838 NM 4655451

Copyright 2015 - All Rights Reserved

RRC

| NO. | REVISION | DATE |
|-----|----------|------|
| | | |

JOB NO.: LS1601030

DWG. NO.: 1601030LVM

308 W. BROADWAY ST., HOBBS, NM 88240 (575) 964-8200

SCALE: 1000'

DATE: 1-28-2016

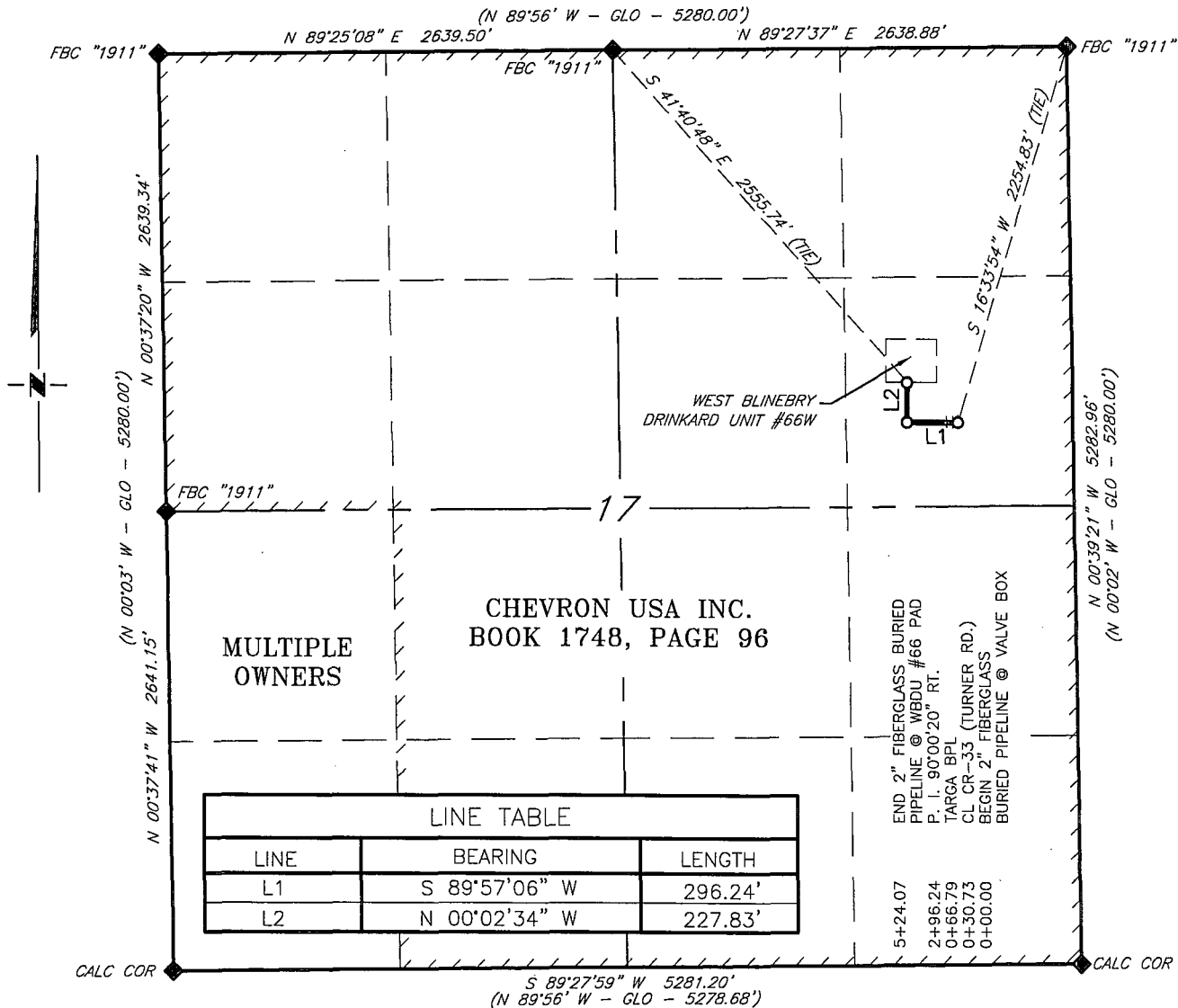
SURVEYED BY: BK/CG

DRAWN BY: LPS

APPROVED BY: RMH

SHEET : 1 OF 1

APACHE CORPORATION
PROPOSED 2" BURIED FIBERGLASS PIPELINE FROM AN EXISTING
VALVE BOX TO THE WEST BLINEBRY DRINKARD UNIT #66W
SECTION 17, T21S, R37E,
N. M. P. M., LEA CO., NEW MEXICO



DESCRIPTION

A strip of land 30 feet wide, being 524.07 feet or 31.762 rods in length, lying in Section 17, Township 21 South, Range 37 East, N. M. P. M., Lea County, New Mexico, being 15 feet left and 15 feet right of the following described survey of a centerline across the lands of Chevron USA Inc., according to a deed filed for record in Book 1748, Page 96, of the Deed Records of Lea County, New Mexico:

BEGINNING at Engr. Sta. 0+00.00, a point in the Northeast quarter of Section 17, which bears S 16°33'54" W, 2,254.83 feet, from a brass cap, stamped "1911", found for the Northeast quarter of Section 17;

Thence S 89°57'06" W, 296.24 feet, to Engr. Sta. 2+96.24, a P. I. of 90°00'20" right;

Thence N 00°02'34" W, 227.83 feet, to Engr. Sta. 5+24.07, a point in the Northeast quarter of Section 17, which bears S 41°40'48" E, 2,555.74 feet, from a brass cap, stamped "1911", found for the North quarter corner of Section 17.

Said strip of land contains 0.361 acres, more or less, and is allocated by forties as follows:

SCALE: 1" = 1000'
0 500' 1000'

SE 1/4 NE 1/4

31.762 Rods

0.361 Acres

BEARINGS ARE GRID NAD 27
NM EAST
DISTANCES ARE HORIZ. GROUND.

LEGEND

() RECORD DATA - GLO

◆ FOUND MONUMENT
AS NOTED— PROPOSED 2" BURIED
FIBERGLASS PIPELINE

I, R. M. Howett, a N. M. Professional Surveyor, hereby
certify that I prepared this plat from an actual survey
made on the ground under my direct supervision, said
survey and plat meet the Min. Stds. for Land Surveying in
the State of N. M. and are true and correct to the best
of my knowledge and belief.

Robert M. Howett

Robert M. Howett

NM PS 19680



Firm No.: TX 10193838 NM 4655451

Copyright 2014 - All Rights Reserved

RRC

NO. REVISION DATE

JOB NO.: LS1601030

DWG. NO.: 1601030-1

308 W. BROADWAY ST., HOBBS, NM 88240 (575) 964-8200

SCALE: 1" = 1000'

DATE: 2-05-2016

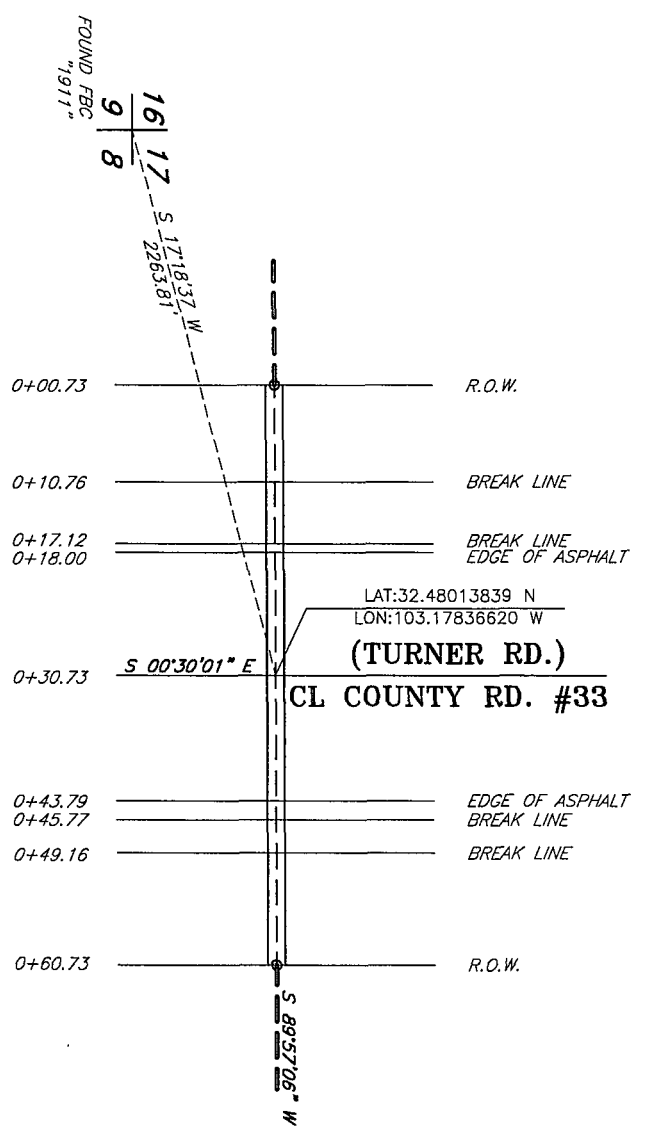
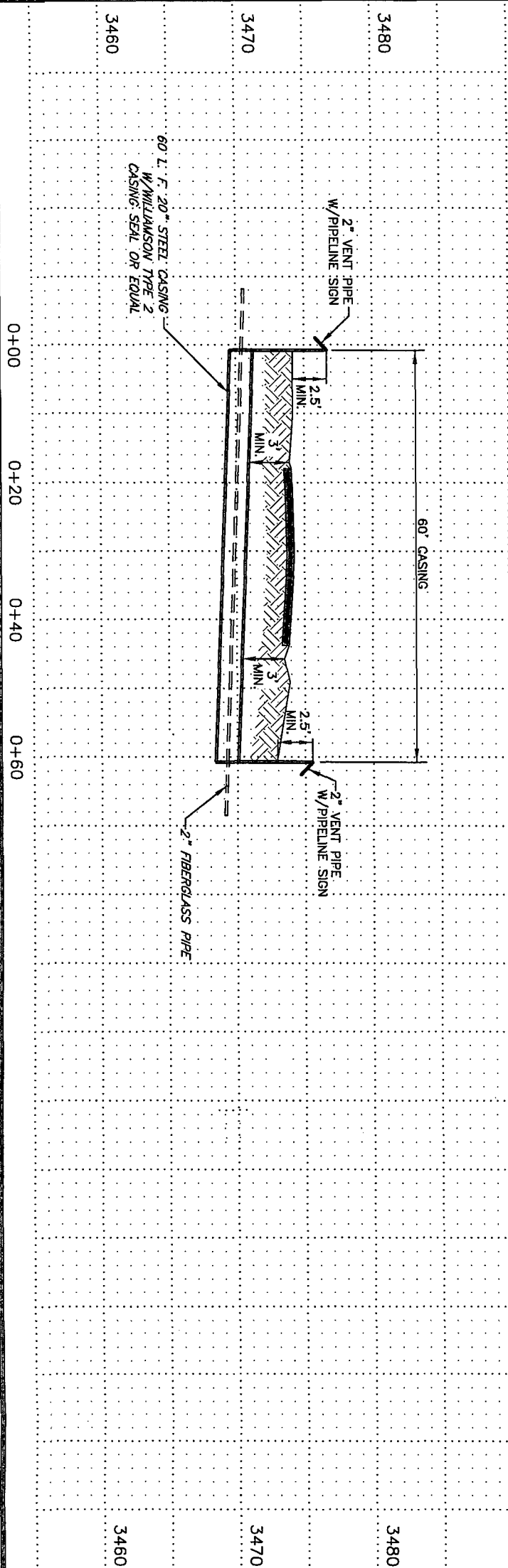
SURVEYED BY: BC/HD

DRAWN BY: LPS

APPROVED BY: RMH

SHEET : 1 OF 1

Exhibit #1B



APACHE CORPORATION
Proposed 2" Buried Fiberglass Pipeline
Crossing County Road #33
Section 17, Township 21 South, Range 37 East,
N. M. P. M., Lea County, New Mexico

BEARINGS ARE NAD 27 NM EAST ZONE
DISTANCES ARE GROUND
SCALE: 1" = 20' HORIZ. / 1" = 10' VERT.

Firm, No.: TX:10193838; NM 4655451

Copyright 2015 - All Rights Reserved

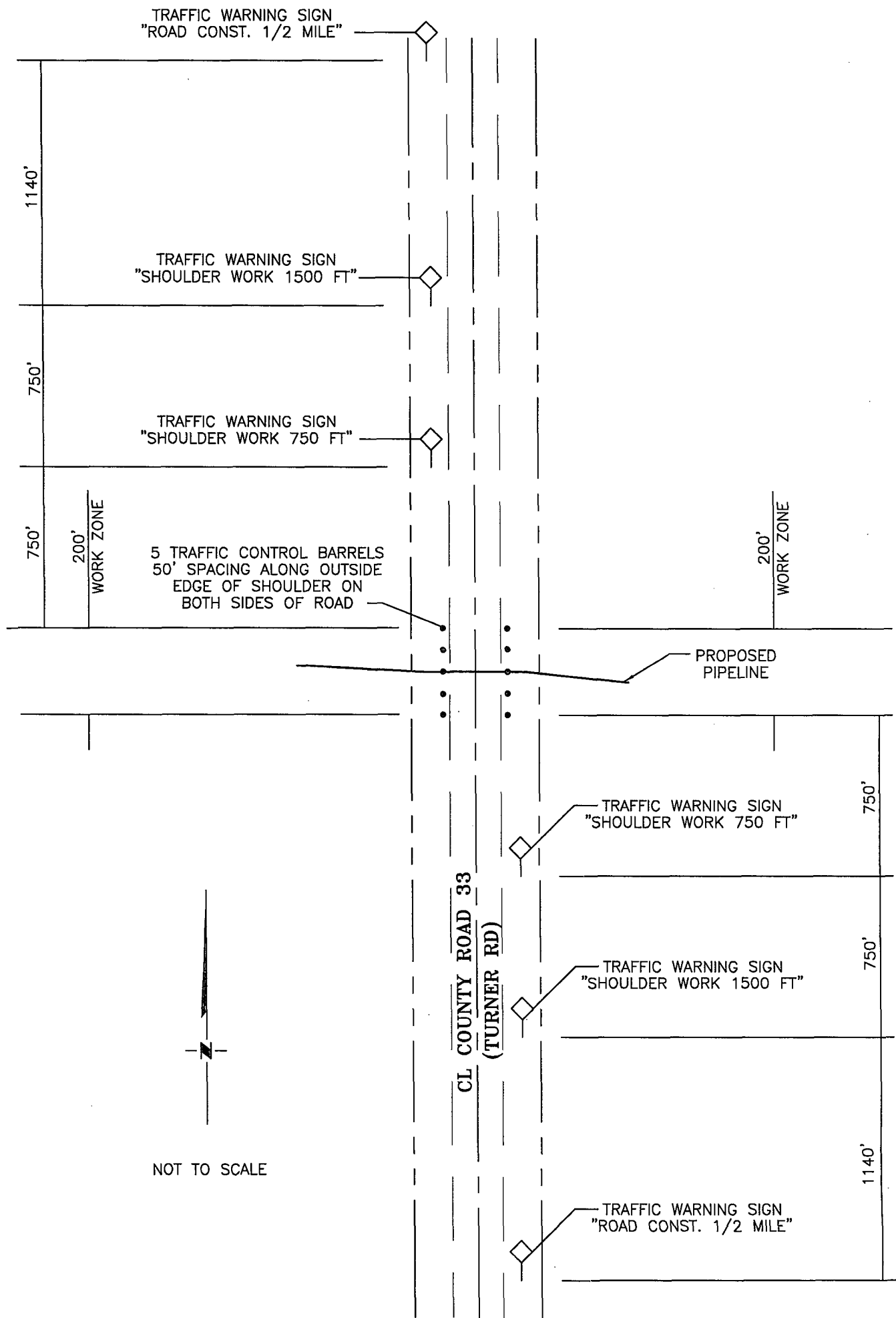
| NO. | REVISION | DATE |
|-----------|-----------|------|
| JOB NO.: | LS1601030 | |
| DWG. NO.: | 1601030RP | |

RRC
308 W. BROADWAY ST., HOBBS, NM 88240 (575) 964-8200

| |
|--------------------|
| SCALE: N. T. S. |
| 2-05-2016 |
| SURVEYED BY: BC/DH |
| DRAWN BY: LPS |
| APPROVED BY: RMH |
| SHEET : 1 OF 2 |

APACHE CORPORATION
Proposed 2" Buried Fiberglass Pipeline
Crossing County Road #33
Section 17, Township 21 South, Range 37 East,
N. M. P. M., Lea County, New Mexico

Exhibit
#1C



Firm No.: TX 10193838 NM 4655451

Copyright 2014 - All Rights Reserved

RRC

| | | |
|----------------------|----------|------|
| | | |
| | | |
| | | |
| NO. | REVISION | DATE |
| JOB NO.: LS1601030 | | |
| DWG. NO.: 1601030TCP | | |

308 W. BROADWAY ST., HOBBS, NM 88240 (575) 964-8200

| |
|--------------------|
| SCALE: N. T. S. |
| DATE: 2-05-2016 |
| SURVEYED BY: BC/HD |
| DRAWN BY: LPS |
| APPROVED BY: RMH |
| SHEET: 2 of 2 |

EXHIBIT 2

