

DISTRICT I
1625 N. French Dr., Hobbs, NM 88240

DISTRICT II
1301 W. Grand Avenue, Artesia, NM 88210

DISTRICT III
1000 Rio Brazos Rd., Aztec, NM 87410

DISTRICT IV
1220 S. St. Francis Dr., Santa Fe, NM 87505

State of New Mexico
Energy, Minerals & Natural Resources Department

OIL CONSERVATION DIVISION
1220 South St. Frances Dr.
Santa Fe, NM 87505

Form C-102
Revised October 12, 2005
Submit to Appropriate District Office
State Lease - 4 Copies
Fee Lease - 3 Copies

RECEIVED

☐ AMENDED REPORT

WELL LOCATION AND ACREAGE DEDICATION PLAT

API Number 30-025-43251	Pool Code 96637	Pool Name TEAS; Bone Spring, East
Property Code 302795	Property Name HAMON FED COM A	Well Number 10H
GRID No. 240974	Operator Name LEGACY RESERVES OPERATING LP	Elevation 3610'

Surface Location

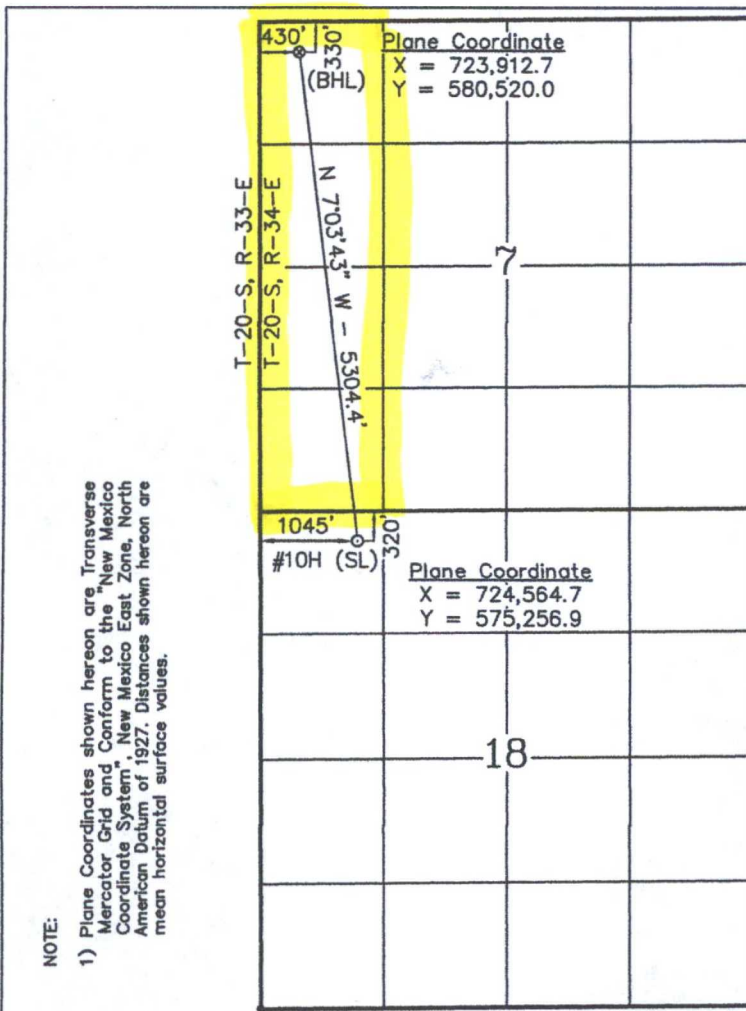
UL or lot No. D/1	Section 18	Township 20 S	Range 34 E	Lot Idn	Feet from the 320	North/South line NORTH	Feet from the 1045	East/West line WEST	County LEA
----------------------	---------------	------------------	---------------	---------	----------------------	---------------------------	-----------------------	------------------------	---------------

Bottom Hole Location If Different From Surface

UL or lot No. 1	Section 7	Township 20 S	Range 34 E	Lot Idn	Feet from the 330	North/South line NORTH	Feet from the 430	East/West line WEST	County LEA
--------------------	--------------	------------------	---------------	---------	----------------------	---------------------------	----------------------	------------------------	---------------

Dedicated Acres 160.44	Joint or Infill 159.46	Consolidation Code	Order No.
---------------------------	---------------------------	--------------------	-----------

NO ALLOWABLE WILL BE ASSIGNED TO THIS COMPLETION UNTIL ALL INTERESTS HAVE BEEN CONSOLIDATED OR A NON-STANDARD UNIT HAS BEEN APPROVED BY THE DIVISION



OPERATOR CERTIFICATION	
I hereby certify the information contained herein is true and complete to the best of my knowledge and belief, and that this organization either owns a working interest or unleased mineral interest in the land including the proposed bottom hole location or has a right to drill this well at this location pursuant to a contract with an owner of such a mineral or working interest, or to a voluntary pooling agreement or a compulsory pooling order heretofore entered by the division.	
Signature Barry W. Hunt	Date 8/5/15
Printed Name Barry W. Hunt	
SURVEYOR CERTIFICATION	
I hereby certify that the well location shown on this plat was plotted from field notes of actual surveys made by me or under my supervision and that the same is true and correct to the best of my belief.	
Date of Survey July 14, 2015	
Signature & Seal of Professional Surveyor SC 12185	
W.O. Num. 2015-0491	
Certificate No. MACON McDONALD 12185	

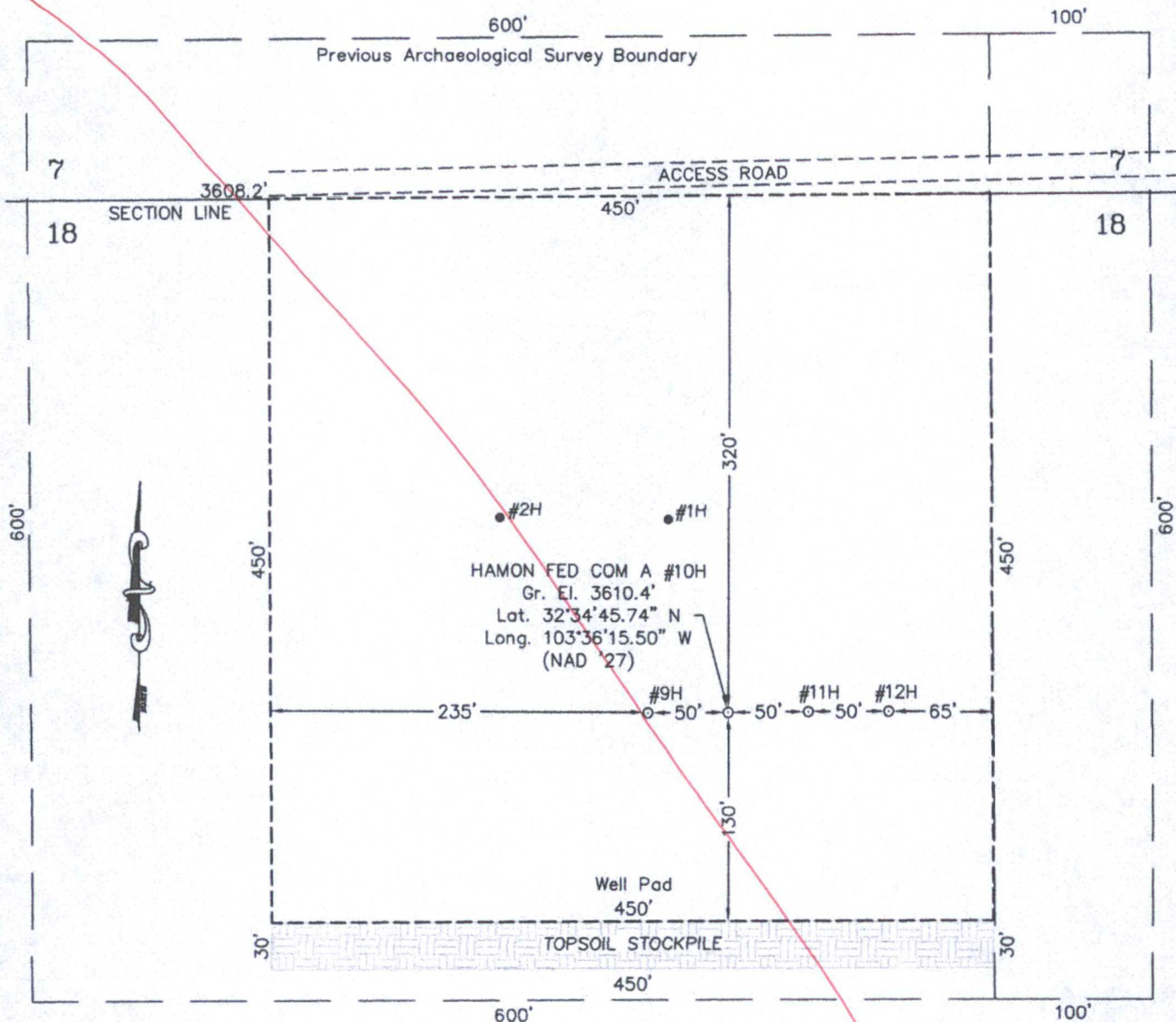
Scale
1" = 2000'

SECTION 18, TOWNSHIP 20 SOUTH, RANGE 34 EAST, N.M.P.M.

LEA COUNTY

NEW MEXICO

L-2015-0491-F



DRIVING DIRECTIONS

FROM THE INTERSECTION OF STATE HIGHWAY 18 AND U.S. HIGHWAY 62-180 IN HOBBS, NEW MEXICO, GO WEST AND SOUTHWEST ON U.S. HIGHWAY 62-180 28.5 MILES TO LEASE ROAD ON SOUTH (LEFT) SIDE OF THE HIGHWAY, THEN GO SOUTH 1.6 MILES TO ANOTHER LEASE ROAD ON THE WEST (RIGHT) SIDE OF THE ROAD, THEN GO WEST 0.8 MILE TO THE PROPOSED LOCATION.

LEGACY RESERVES OPERATING LP

HAMON FED COM A #10H

Located 320' FNL & 1045' FWL, Section 18
Township 20 South, Range 34 East, N.M.P.M.
Lea County, New Mexico

**WEST
COMPANY**
of Midland, Inc.

FIRM REGISTRATION NUMBER: 100682-00
110 W. LOUISIANA, STE. 110
MIDLAND TEXAS, 79701
(432) 687-0865 - (432) 687-0868 FAX

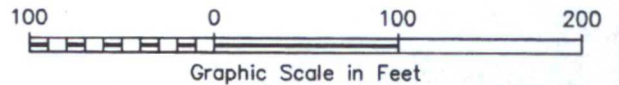
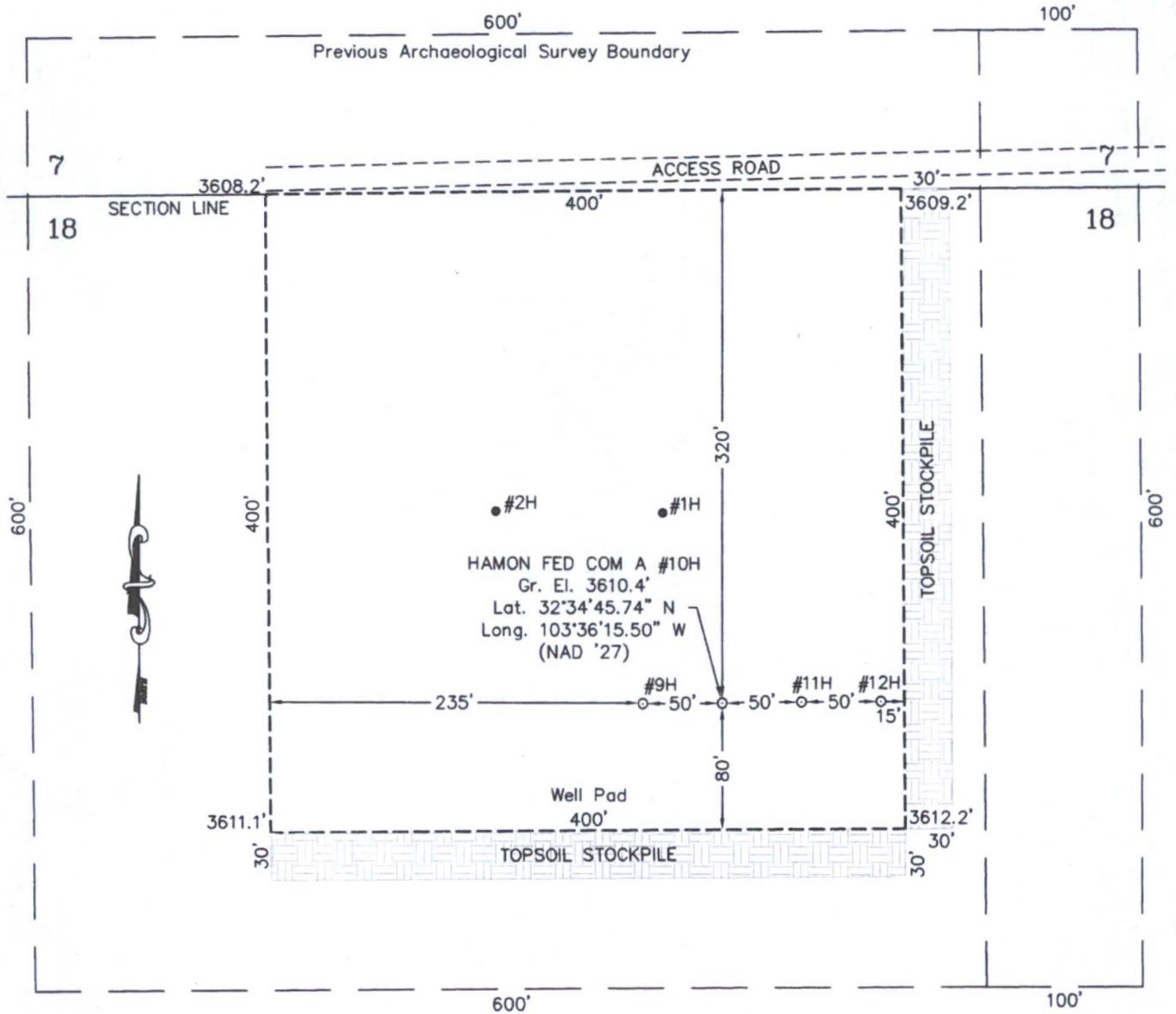
Drawn By: LVA / SC	Date: July 15, 2015
Scale: 1" = 100'	Field Book: 559 / 58-59
Revision Date: 8-20-2015	Quadrangle: Lea
W.O. No: 2015-0491	Dwg. No.: L-2015-0491-F

SECTION 18, TOWNSHIP 20 SOUTH, RANGE 34 EAST, N.M.P.M.

LEA COUNTY

NEW MEXICO

L-2015-0491-F



DRIVING DIRECTIONS

FROM THE INTERSECTION OF STATE HIGHWAY 18 AND U.S. HIGHWAY 62-180 IN HOBBS, NEW MEXICO, GO WEST AND SOUTHWEST ON U.S. HIGHWAY 62-180 28.5 MILES TO LEASE ROAD ON SOUTH (LEFT) SIDE OF THE HIGHWAY, THEN GO SOUTH 1.6 MILES TO ANOTHER LEASE ROAD ON THE WEST (RIGHT) SIDE OF THE ROAD, THEN GO WEST 0.8 MILE TO THE PROPOSED LOCATION.

LEGACY RESERVES OPERATING LP

HAMON FED COM A #10H

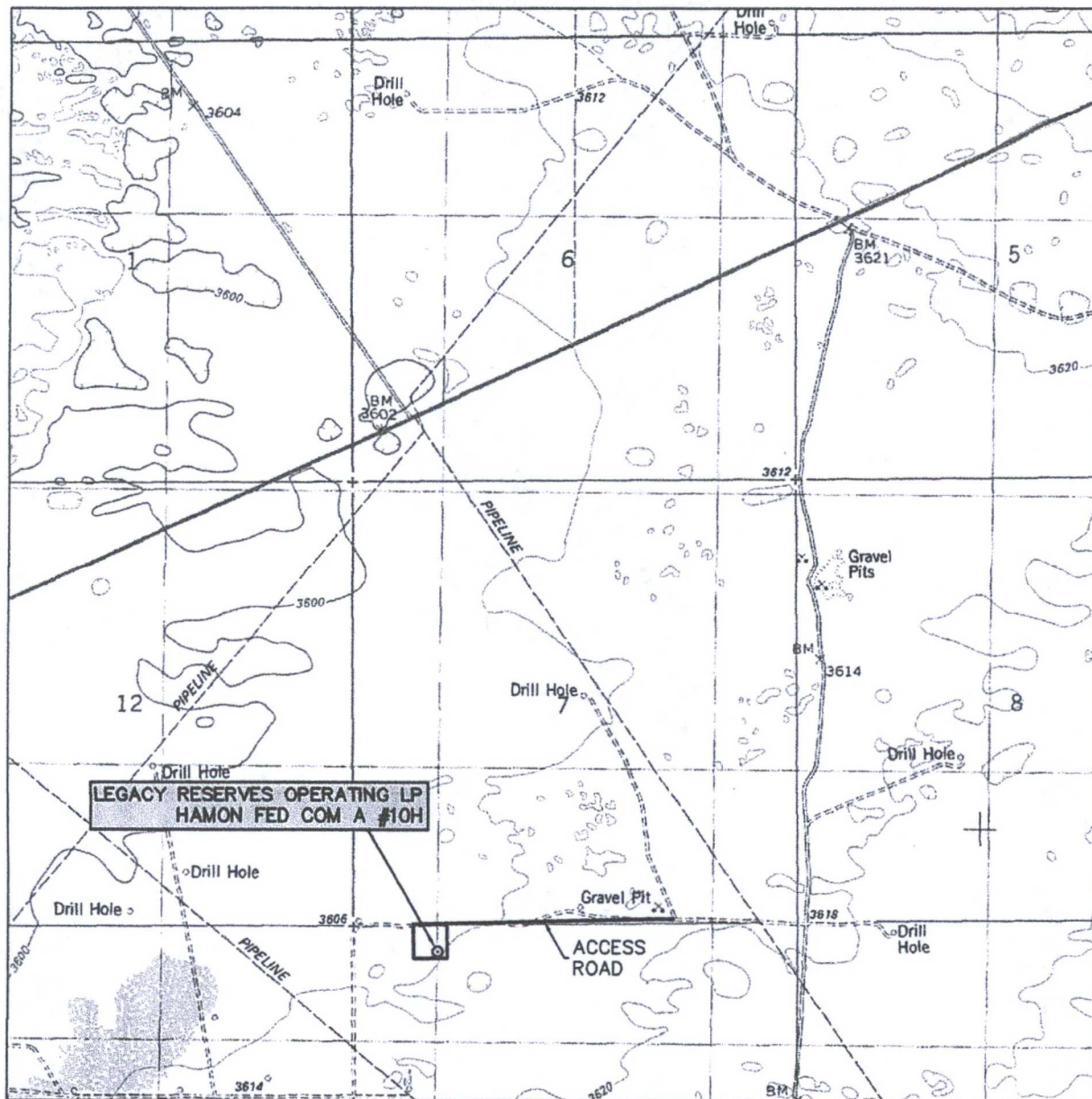
Located 320' FNL & 1045' FWL, Section 18
Township 20 South, Range 34 East, N.M.P.M.
Lea County, New Mexico

Drawn By: LVA / SC	Date: July 15, 2015
Scale: 1" = 100'	Field Book: 559 / 58-59
Revision Date: 7-22-2015	Quadrangle: Lea
W.O. No: 2015-0491	Dwg. No.: L-2015-0491-F



FIRM REGISTRATION NUMBER: 100682-00
110 W. LOUISIANA, STE. 110
MIDLAND TEXAS, 79701
(432) 687-0865 - (432) 687-0868 FAX

LOCATION VERIFICATION MAP



SCALE: 1" = 2000'

CONTOUR INTERVAL:
LEA - 10'

SEC. 18 TWP. 20-S RGE. 34-E

SURVEY N.M.P.M.

COUNTY LEA

DESCRIPTION 320' FNL & 1045' FWL

ELEVATION 3610'

OPERATOR LEGACY RESERVES OPERATING LP

LEASE LEA UNIT

U.S.G.S. TOPOGRAPHIC MAP
LEA



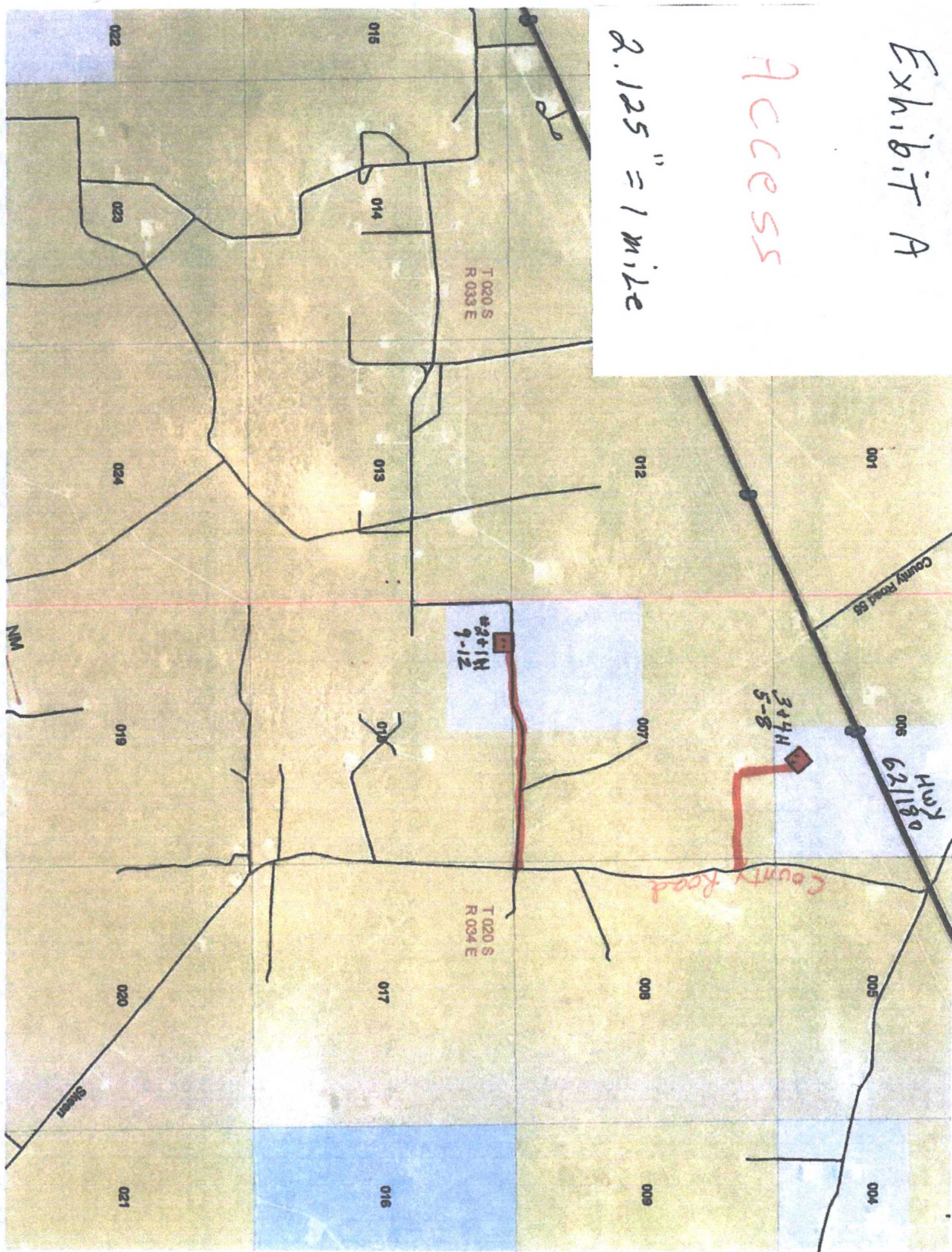
**WEST
COMPANY**
of Midland, LLC

FIRM REGISTRATION NUMBER: 100682-00
110 W. LOUISIANA, STE. 110
MIDLAND TEXAS, 79701
(432) 687-0865 - (432) 687-0868 FAX

Exhibit A

Access

2.125" = 1 mile



104

$$2.125'' = 1 \text{ mile}$$
